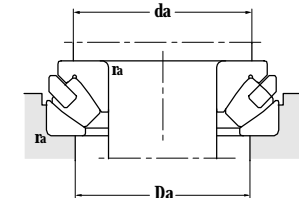
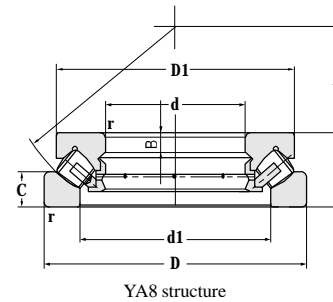
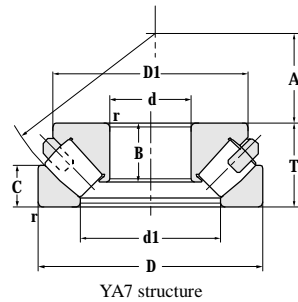
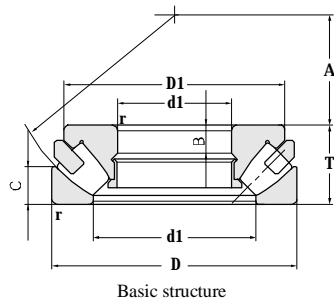


# Thrust Spherical Roller Bearing(Asymmetrical)

d 60-130 mm

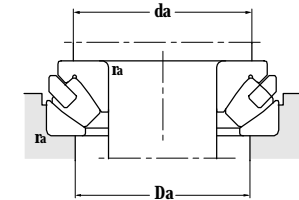
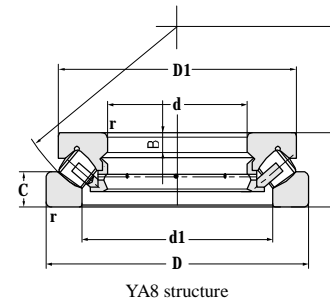
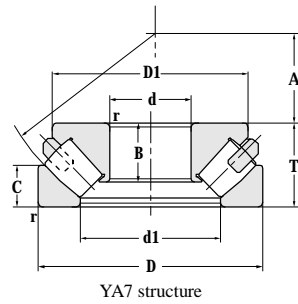
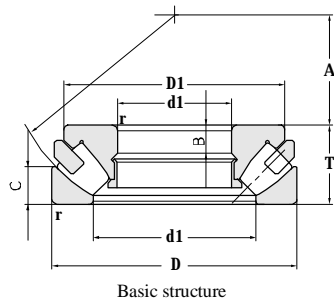


Principal dimensions				Basic load ratings		Limit speed ratings		Designations
d	D	T	r <sub>min</sub>	C <sub>R</sub>	C <sub>OR</sub>	Grease	Oil	
mm				kN		r/min		
<b>60</b>	130	42	1.5	375	880	1800	2600	<b>29412</b>
	130	42	1.5	375	880	1800	2600	<b>29412J</b>
<b>65</b>	140	45	2	440	1040	1700	2400	<b>29413</b>
	140	45	2	440	1040	1700	2400	<b>29413J</b>
	140	45	2	440	1040	1700	2400	<b>29413J1</b>
<b>70</b>	150	48	2	500	1200	1600	2200	<b>29414</b>
<b>75</b>	160	51	2	580	1370	1600	2200	<b>29415</b>
<b>80</b>	170	54	2.1	640	1600	1400	2000	<b>29416</b>
	170	54	2.1	640	1600	1400	2000	<b>29416Q1</b>
	170	54	2.1	640	1570	1400	2000	<b>29416Q1/YA7</b>
<b>85</b>	150	39	1.5	365	1070	1600	2200	<b>29317</b>
<b>90</b>	155	39	1.5	385	1040	1600	2200	<b>29318</b>
	190	60	2.1	785	1980	1300	1800	<b>29418</b>
	190	60	2.1	785	1980	1300	1800	<b>29418Q1</b>
	190	60	2.1	785	1980	1300	1800	<b>29418Q1/HAYA7</b>
	190	60	2.1	785	1980	1300	1800	
<b>100</b>	170	42	1.5	450	1330	1500	2000	<b>29320</b>
<b>110</b>	190	48	2	590	1660	1200	1700	<b>29322</b>
	230	73	3	1130	2880	1100	1600	<b>29422</b>
<b>120</b>	210	54	2.1	545	2010	1100	1600	<b>29324</b>
	250	78	4	910	1590	1000	1500	<b>39424</b>
	250	156	5	980	2700	900	1300	<b>29424D/YA7</b>
<b>130</b>	225	58	2.1	830	2400	1000	1500	<b>29326</b>
	225	116	2.1	830	2400	1000	1500	<b>29326D</b>
	225	58	2.1	830	2400	1100	1600	<b>29326J</b>
	225	58	2.1	830	2400	1100	1600	<b>29326/YA7</b>
	225	58	2.1	830	2400	1000	1500	<b>29326/YA8</b>
	225	58	2.1	830	2400	1000	1500	

Other dimensions					Abutment and fillet dimensions			Weight
d1	D1	B	C	A	d <sub>amin</sub>	D <sub>amax</sub>	r <sub>amax</sub>	
mm					mm			
89	117.6	15	20	38	90	107	1.5	2.60
89	117	15	20	38	90	107	1.5	2.60
95	125	29.5	21	42	100	117	2	3.33
91	120	29.5	22	42	100	117	2	3.14
95	125	29.5	21.5	42	100	117	2	3.34
103	135	31	23	44	107	130	2	4.24
108	140	18	24	47	115	133	2	4.27
113	153.7	19	26.8	50	120	141	2	6.06
113	153.7	19	26.8	50	120	141	2	6.06
114	151	43	25.2	50	120	141	2	9.65
111	138	13	18.7	50	115	129	1.5	2.81
115.5	143.2	13	18.8	52	120	134	1.5	2.93
127	170	22	28.5	56	135	158	2	7.85
127	170	22	28.5	56	135	158	2	7.85
127	170	49.6	28.5	56	135	158	2	7.85
127.5	158.9	14	20.6	58	130	147	1.5	3.80
143	175	16	23	64	145	164	2	6.94
155.5	208	26	34.4	69	164	193	2.5	18.1
156	193.5	18	25.9	70	160	181	2	7.45
172	222	50.5	37	74	180	209	3	17.1
174	220	153	37	74	180	209	3	33.3
168	206.7	19	27.8	76	175	194	2	9.08
168	206.7	19	27.8	76	175	194	2	18.6
166	200	19	28	76	170	195	2	8.48
168	206.7	45	27.8	76	170	195	2	8.99
168	206.7	19	27.8	76	170	195	2	9.11

# Thrust Spherical Roller Bearing(Asymmetrical)

d 130~200 mm

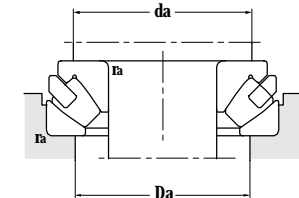
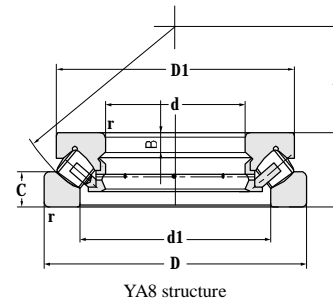
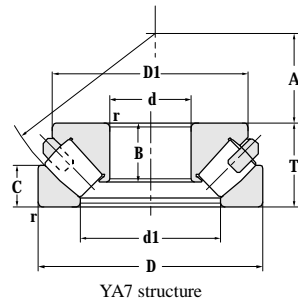
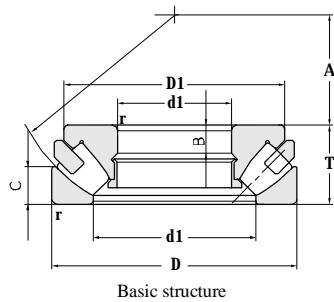


Principal dimensions				Basic load ratings		Limit speed ratings		Designations
d	D	T	r <sub>min</sub>	C <sub>r</sub>	C <sub>or</sub>	Grease	Oil	
mm				kN		r/min		
<b>130</b>	270	85	4	1500	3890	950	1400	<b>29426/YA7</b>
<b>140</b>	240	60	2.1	940	2600	950	1400	<b>29328</b>
<b>150</b>	250	60	2.1	960	2740	950	1400	<b>29330</b>
	250	60	2.1	960	2740	950	1400	<b>29330A</b>
	250	60	2.1	960	2740	950	1400	<b>29330J</b>
	250	60	2.1	960	2740	950	1400	<b>29330/YA8</b>
	300	90	4	1790	4900	800	1100	<b>29430/YA8</b>
<b>160</b>	270	67	3	1130	3330	850	1200	<b>29332</b>
	270	67	3	1130	3330	850	1200	<b>29332F3</b>
	320	95	5	2000	5330	700	1000	<b>29432</b>
<b>170</b>	280	67	3	1150	3410	850	1200	<b>29334</b>
	280	67	3	1150	3680	850	1200	<b>29334J</b>
	340	103	5	2270	6350	700	950	<b>29434/YA7</b>
<b>180</b>	250	42	1.5	475	1960	900	1300	<b>29236</b>
	300	73	3	1370	4130	700	1000	<b>29336</b>
	300	73	3	1370	4130	700	1000	<b>29336/YA8</b>
	360	109	5	2500	7060	700	950	<b>29436</b>
	360	109	5	2500	7200	700	950	<b>29436/YA7</b>
	360	109	5	2500	7060	700	950	<b>29436/YA8</b>
	<b>190</b>	270	48	2	620	2660	-	1400
270		48	2	620	2660	-	1400	<b>29238F3</b>
320		78	4	1565	4950	750	1000	<b>29338</b>
320		78	4	1565	5300	750	1000	<b>29338/YA8</b>
380		115	5	2740	7680	630	850	<b>29438</b>
<b>200</b>	280	48	2	630	2590	-	1400	<b>29240</b>
	340	85	4	1790	5280	700	950	<b>29340</b>
	340	85	4	1790	5280	700	950	<b>29340J</b>
	340	85	4	1790	5280	700	950	<b>29340/YA8</b>

Other dimensions					Abutment and fillet dimensions			Weight
d1	D1	B	C	A	d <sub>amin</sub>	D <sub>amax</sub>	r <sub>amax</sub>	
mm					mm			
183	246	67.5	39.7	81	142.5	227	3	28.3
183	221	20	28	82	185	208	2	10.1
194	240	20	29	87	195	235	2	11.5
190	215	34.6	29	87	190	210	2	10.5
190	225.5	38	29	87	195	219	2	10.9
194	240	20	29	87	195	219	2	11.5
209.5	273	32	42.1	92	220	253	3	28.6
205	249.6	23	31.7	92	210	235	2.5	14.6
205	249.6	23	31.7	92	210	235	2.5	14.5
218.5	285	34	46.9	99	235	270	4	32.8
216	260.3	23	31.7	96	220	245	2.5	15.7
215	252.5	42.2	32	96	220	245	2.5	14.8
234	310	79	48.8	103	250	286	4	42.8
209	239	15	21.3	97	215	227	1.5	7.05
229	275	25	34.4	103	235	262	2.5	19.9
229	275	25	34.4	103	235	262	2.5	20.3
249.5	326	39	51.2	110	265	304	4	64.2
249.5	326	84	51.2	110	265	304	4	49.8
249.5	326	39	51.2	5	265	304	4	62.5
222.5	257	15.5	24.1	104	225	243	2	8.44
222.5	257	15.5	24.1	104	225	243	2	8.37
240.5	298.3	27	38.6	110	250	280	3	25.1
240.5	308	27	38.6	110	250	280	3	25.7
263	345	41	53.7	117	280	321	4	59.0
234.5	266	15	24	108	240	254	2	8.54
259	314	29	39.1	116	265	297	3	29.5
261	318	54.5	41	116	265	297	3	29.3
261	325	29	41	116	265	297	3	34.0

# Thrust Spherical Roller Bearing(Asymmetrical)

d 200~340 mm

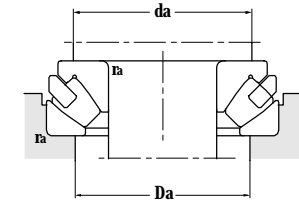
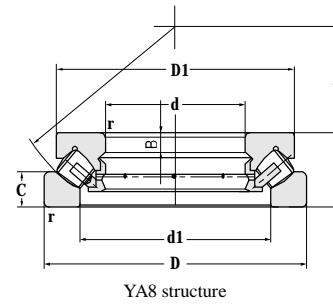
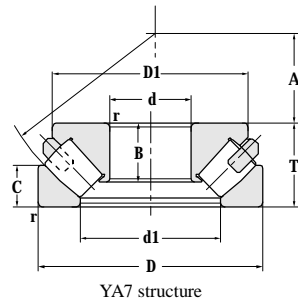
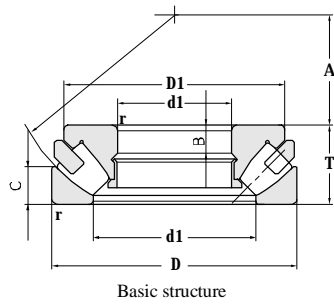


Principal dimensions				Basic load ratings		Limit speed ratings		Designations
d	D	T	r <sub>min</sub>	C <sub>r</sub>	C <sub>or</sub>	Grease	Oil	
mm				kN		r/min		
<b>200</b>	400	122	5	2480	9100	600	800	<b>29440/YA7</b>
<b>220</b>	300	48	2	665	2780	-	1300	<b>29244</b>
	360	85	4	1920	2800	670	900	<b>29344</b>
	360	85	4	1920	6050	670	900	<b>29344J</b>
	360	85	4	1920	6050	670	900	<b>29344/YA8</b>
	420	122	6	3220	9270	560	750	<b>29444</b>
<b>240</b>	340	60	2.1	910	4360	670	900	<b>29248</b>
	380	85	4	1960	6290	600	800	<b>29348</b>
	380	85	4	1960	6290	600	800	<b>29348/YA7</b>
	380	85	4	1960	6500	600	800	<b>29348/YA8</b>
	440	122	6	3270	10100	530	750	<b>29448</b>
<b>260</b>	360	60	2.1	830	4150	-	1100	<b>29252</b>
	420	95	5	2450	7970	600	800	<b>29352</b>
	480	132	6	3890	12400	500	670	<b>29452J</b>
	480	132	6	3890	13400	500	670	<b>29452J/HC</b>
	480	132	6	3890	12400	500	670	<b>29452J/HC-1</b>
<b>280</b>	380	60	2.1	895	3840	700	1000	<b>29256</b>
	440	95	5	2450	8300	500	670	<b>29356</b>
	520	145	6	4700	14700	480	630	<b>29456</b>
	520	145	6	4700	14700	480	630	<b>29456F1</b>
<b>300</b>	420	73	3	1220	6200	-	900	<b>29260</b>
	480	109	5	2530	10500	700	750	<b>29360</b>
	540	145	6	3500	14800	450	600	<b>29460</b>
<b>320</b>	440	73	3	1320	7050	670	900	<b>29264</b>
	500	109	5	3250	10800	600	800	<b>29364</b>
	500	109	5	3250	10800	600	800	<b>29364/HC</b>
	580	155	7.5	4750	18200	430	560	<b>29464/YA8</b>
<b>340</b>	540	122	5	3150	12400	600	800	<b>29368</b>

Other dimensions					Abutment and fillet dimensions			Weight
d1	D1	B	C	A	d <sub>amin</sub>	D <sub>amax</sub>	r <sub>amax</sub>	
mm					mm			
276.5	360	94	56.7	122	295	337	4	85
254	284.4	15	24	117	260	273	2	9.20
277.5	330	29	40.7	125	285	316	3	28.6
273.5	326.3	55	41	125	285	316	3	31
277.5	330	29	40.7	125	285	316	3	29.4
300	381	43	56.9	132	315	358	5	73.2
281	316	19	30	130	290	308	2	15.7
298.5	360	29	41.7	135	305	336	3	35.4
298.5	360	63.5	41.7	135	305	336	3	35.6
298.5	365	29	41.7	135	305	336	3	20.3
316	400	43	60	142	335	378	5	96.1
302	338	19	30	139	310	326	2	16.9
327.5	392.3	32	46	148	335	380	4	50.2
353	446	83	65	154	360	412	5	98.6
342	432	88.2	65	154	360	412	5	101
353	446	83	65	154	360	412	5	98.6
322.5	364	19	29.5	150	325	347	2	21.7
346	411	32	46.3	158	360	400	4	50.6
373.5	470	54	68.9	166	395	446	5	127
373.5	470	54	68.9	166	395	446	5	125
405	353	21	38	162	360	380	2.5	29.5
371.5	448	37	53	168	385	423	4	72.7
395	494.4	52	68.3	175	395	446	5	138
369.5	419.4	21	36	172	375	410	2.5	31.4
394.5	466.5	37	53	180	340	456	4	75.8
394.5	466.5	37	53	180	340	456	4	75.8
420	534	55	75	191	450	500	6	170
421	503	41	59.5	192	440	479	4	101

# Thrust Spherical Roller Bearing(Asymmetrical)

d 340~500 mm

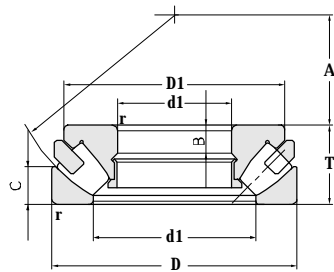


Principal dimensions				Basic load ratings		Limit speed ratings		Designations
d	D	T	r <sub>min</sub>	C <sub>r</sub>	C <sub>or</sub>	Grease	Oil	
mm				kN		r/min		
<b>340</b>	620	170	7.5	5520	21500	500	700	<b>29468F3</b> <b>29468/YA57</b>
	620	170	7.5	5700	18500	380	500	
<b>360</b>	500	85	4	1630	8500	600	800	<b>29272</b> <b>29372</b> <b>29472/HC</b>
	560	122	5	3080	12400	500	600	
	640	170	7.5	5230	20800	400	500	
<b>380</b>	520	85	4	1820	8900	500	700	<b>29276</b> <b>29376</b> <b>29376/HC</b>
	600	132	6	3280	15200	450	650	
	600	132	6	3280	15200	450	650	
<b>400</b>	540	85	4	1720	7680	500	700	<b>29280</b> <b>29280F3</b> <b>29280F3/YA7</b> <b>29380</b> <b>29380F3</b> <b>29480</b>
	540	85	4	1720	7680	500	700	
	540	85	4	1650	9050	500	700	
	620	132	6	3500	16800	440	620	
	620	132	6	3500	16800	440	620	
	710	185	7.5	6230	25500	300	450	
<b>420</b>	650	140	6	3800	17900	420	600	<b>29384</b> <b>29484</b>
	730	185	7.5	6900	28000	400	580	
<b>440</b>	600	95	5	2000	10100	400	580	<b>29288/YA8</b> <b>29388</b> <b>29488</b> <b>29488/HC</b>
	680	145	6	4310	19500	360	480	
	780	206	9.5	7500	30700	260	380	
	780	206	9.5	7500	30700	260	380	
<b>460</b>	620	95	5	2280	12900	400	580	<b>29292</b> <b>29292/YA8</b> <b>29392</b> <b>29392/HC</b> <b>29392/YA8</b> <b>29492/YA8</b>
	620	95	5	2280	12900	420	600	
	710	150	6	4460	18800	300	450	
	710	150	6	4460	18800	300	450	
	710	150	6	4460	18800	300	450	
	800	206	9.5	8100	32300	260	380	
<b>480</b>	650	103	5	2350	11800	430	560	<b>29296</b> <b>29296/YA7</b>
	650	103	5	2260	12700	360	480	
<b>500</b>	750	150	6	4950	23100	280	430	<b>293/500</b>

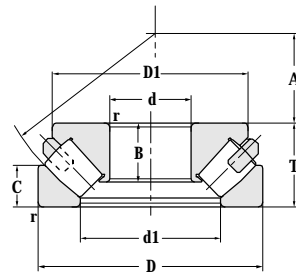
Other dimensions					Abutment and fillet dimensions			Weight
d1	D1	B	C	A	d <sub>amin</sub>	D <sub>amax</sub>	r <sub>amax</sub>	
mm					mm			kg
449.5	560	61	80	201	475	530	6	218
449.5	560	115	80.1	201	475	530	6	206
420	470	25	41	194	430	453	3	45.9
445	521	41	59.5	202	460	500	4	103
470	588	61	81	210	495	500	6	221
439	498	27	42	202	450	473	3	50
475	561	44	61.4	216	495	535	5	129
475	561	44	61.4	216	495	535	5	129
460	510	27	42	212	470	493	3	64.6
460	510	27	42	212	470	493	3	63.1
460	510	64	42	212	470	493	3	62.9
489	582	44	64.7	225	510	550	5	153
489	582	44	64.7	225	510	550	5	153
529.5	652	67	86	236	550	615	6	309
514.5	610	48	6.8	235	535	580	5	159
545	673	67	89	244	575	635	6	311
508	585	30	46.5	235	520	545	4	77.1
539	636	49	70.8	245	585	630	3	180
583	716	74	97	260	630	695	8	394
583	716	74	97	260	630	695	8	394
525.5	590	30	49.4	245	540	565	4	75.2
525.5	590	30	49.4	245	540	565	4	76.6
567	668	51	72	257	586	630	5	207
567	668	51	72	257	586	630	5	207
567	668	51	72	257	586	630	5	210
596	730	74	99.5	272	630	695	8	415
556	635	33	53.5	259	570	595	4	99.3
554	626	79	51	259	570	595	4	93.4
601.5	709.4	51	75.5	280	630	675	5	221

# Thrust Spherical Roller Bearing(Asymmetrical)

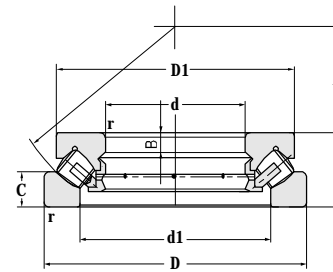
d 500~850 mm



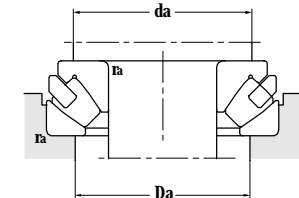
Basic structure



YA7 structure



YA8 structure

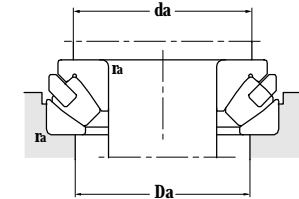
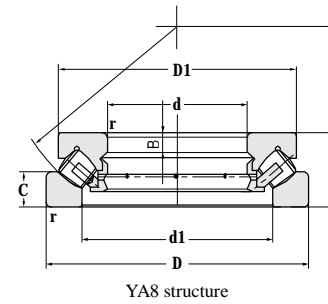
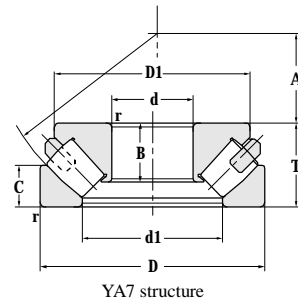
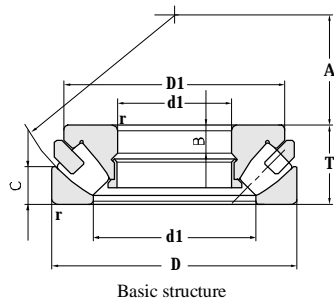


Principal dimensions				Basic load ratings		Limit speed ratings		Designations
d	D	T	r <sub>min</sub>	C <sub>r</sub>	C <sub>or</sub>	Grease	Oil	
mm				kN		r/min		
<b>500</b>	750	150	6	4950	23100	280	430	<b>293/500/YA3</b> <b>293/500/YB2</b> <b>294/500</b> <b>294/500/HC</b>
	750	150	6	4400	21000	280	430	
	870	224	9.5	9000	39500	320	460	
	870	224	9.5	8900	39500	320	460	
<b>530</b>	710	109	5	5000	16600	350	500	<b>292/530</b> <b>294/530</b>
	920	236	9.5	10000	40500	220	300	
<b>560</b>	750	115	5	3100	15400	360	480	<b>292/560</b> <b>292/560F3</b> <b>294/560</b>
	750	115	5	3100	15400	360	480	
	980	250	12	11500	49000	230	310	
<b>600</b>	800	122	5	4050	21200	360	480	<b>292/600</b> <b>293/600F3/HCORYA7S1</b> <b>294/600</b>
	900	180	7.5	7000	33500	320	460	
	1030	258	12	12500	54000	300	450	
<b>630</b>	1090	280	12	13800	62400	300	450	<b>294/630</b> <b>294/630/HC</b>
	1090	280	12	13800	62400	300	450	
<b>670</b>	900	140	6	4200	22800	260	380	<b>292/670</b> <b>294/670HC</b>
	1150	290	15	15400	68000	190	240	
<b>710</b>	1220	308	15	15600	71000	170	220	<b>294/710</b> <b>294/710/HC</b>
	1220	308	15	15600	71000	170	220	
<b>750</b>	1000	150	6	6100	31000	220	340	<b>292/750</b> <b>293/750</b> <b>294/750</b> <b>294/750F3</b>
	1120	224	9.5	9370	45000	180	260	
	1280	315	15	18000	81600	140	200	
	1280	315	15	18000	81600	140	200	
<b>800</b>	1060	155	7.5	6220	36000	240	340	<b>292/800</b> <b>294/800F3</b>
	1360	335	15	19400	89300	230	310	
<b>850</b>	1440	354	15	28600	100000	120	150	<b>294/850F1</b> <b>294/850F1/HC</b>
	1440	354	15	28600	100000	120	150	

Other dimensions					Abutment and fillet dimensions			Weight
d1	D1	B	C	A	d <sub>amin</sub>	D <sub>amax</sub>	r <sub>amax</sub>	
mm					mm			
601.5	709.4	51	75.5	280	630	675	5	221
595	675	51	63	280	630	675	5	201
648	790	81	106	290	685	755	8	589
648	790	81	106	290	685	755	8	589
604	680	35	54	288	615	655	4	118
686	845	89	114	309	725	800	8	615
640	715	40	56.8	302	655	685	4	131
640	715	40	56.8	302	655	685	4	131
727	890	92	120	328	770	850	10	741
688	760	39	59.4	321	700	735	4	159
726	841.5	132.5	87	335	755	810	6	373
769	940	92	127	347	815	900	10	839
816	995	100	137.5	365	860	950	10	1005
816	995	100	137.5	365	860	950	10	1005
773	880	45	73	365	790	825	5	225
864	1045	110	141	387	905	1000	12	1170
910	1130	113	148.5	415	965	1070	12	1406
910	1130	113	148.5	415	965	1070	12	1406
858	950	50	74	406	880	925	5	296
910	1086	76	108	415	935	1000	8	703
972	1164	116	158	436	1015	1120	12	1530
972	1164	116	158	436	1015	1120	12	1530
907.5	1010	50	80	426	935	980	6	343
1034	1250	120	165	462	1080	1185	12	1826
1098	1330	221	172	494	1080	1230	12	2090
1098	1330	221	172	494	1080	1230	12	2090

# Thrust Spherical Roller Bearing(Asymmetrical)

d 900~1620 mm

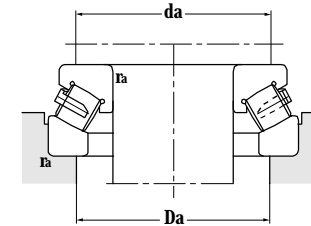
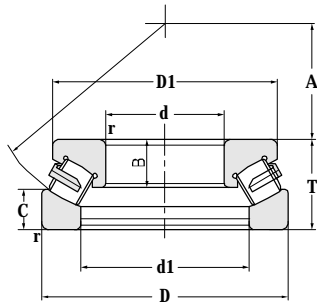


Principal dimensions				Basic load ratings		Limit speed ratings		Designations
d	D	T	r <sub>min</sub>	C <sub>r</sub>	C <sub>or</sub>	Grease	Oil	
mm				kN		r/min		
<b>900</b>	1180	170	7.5	7550	41500	120	150	<b>292/900</b> <b>294/900F3/HCYA8</b>
	1520	372	15	26400	121000	120	150	
<b>950</b>	1250	180	7.5	8430	46900	190	240	<b>292/950</b> <b>294/950F1/HC</b>
	1600	390	15	27100	127000	170	220	
<b>1060</b>	1400	206	9.5	10500	62000	180	260	<b>292/1060</b> <b>292/1060F3</b> <b>294/1060F3/HCSYA8</b>
	1400	206	9.5	10500	62000	180	260	
	1770	426	15	32100	150000	150	200	
<b>1120</b>	1460	206	9.5	11000	68600	170	220	<b>292/1120F1</b> <b>292/1120F3</b>
	1460	206	9.5	11000	68600	170	220	
<b>1180</b>	1520	206	9.5	10900	64000	170	220	<b>292/1180</b>
<b>1320</b>	1540	175	6	6500	48500	120	150	<b>217/1320</b>
<b>1620</b>	1860	150	6	6490	48600	120	150	<b>292/1620/YAD</b>

Other dimensions					Abutment and fillet dimensions			Weight
d1	D1	B	C	A	d <sub>amin</sub>	D <sub>amax</sub>	r <sub>amax</sub>	
mm					mm			kg
1023	1125	54	86	477	1030	1080	6	445
1137	1394	244.5	186	518	1160	1370	12	2653
1081	1185	58	88	507	1095	1155	6	537
1209	1470	253	191	546	1275	1400	12	2920
1208	1335	66	100	566	1225	1290	8	767
1208	1335	66	100	566	1225	1290	8	767
1332	1640	192	207	610	1410	1555	12	4040
1272	1385	141.5	101	601	1300	1365	8	804
1272	1385	141.5	101	601	1300	1365	8	804
1331	1450	83	101	625	1345	1410	8	854
1380	1510	72	98	1446	1470	1400	5	514
1722	1799	103	78.5	850	1780	1720	5	548

# Thrust Spherical Roller Bearing(Symmetrical)

d 70–260 mm

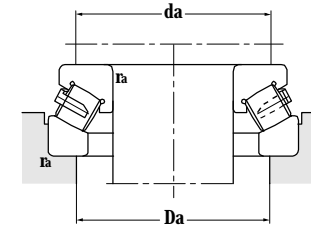
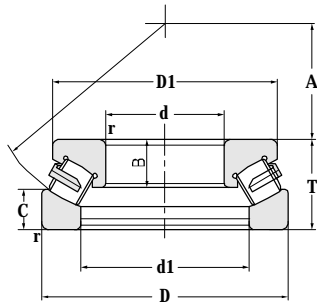


Principal dimensions				Basic load ratings		Limit speed ratings		Designations
d	D	T	r <sub>min</sub>	C <sub>r</sub>	C <sub>or</sub>	Grease	Oil	
mm				kN		r/min		
<b>70</b>	150	48	2.3	314	430	1400	2000	<b>29414/YAD</b>
<b>80</b>	170	54	2.5	407	550	1100	1700	<b>29416/YAD</b>
<b>90</b>	190	60	2.5	484	690	950	1500	<b>29418/YAD</b>
<b>100</b>	210	67	3	644	865	850	1300	<b>29420/YAD</b>
<b>110</b>	190	48	2	400	1270	1300	1800	<b>29322/YAD</b>
<b>120</b>	210	54	2.5	418	650	1000	1600	<b>29324/YAD</b>
	250	78	3.7	781	1060	750	1100	<b>29424/YAD</b>
	250	78	3.7	781	1060	750	1100	<b>29424/YAD-1</b>
<b>130</b>	225	58	2.5	484	750	950	1500	<b>29326/YAD</b>
	270	85	3.7	836	1100	700	1100	<b>29426/YAD</b>
<b>140</b>	280	85	3.7	908	1120	670	950	<b>29428/YAD</b>
<b>150</b>	300	90	3.7	1090	1710	630	900	<b>29430/YAD</b>
<b>160</b>	270	67	3	730	2380	630	900	<b>29332/YAD</b>
	320	95	4.7	1100	1720	560	800	<b>29432/YAD</b>
<b>170</b>	340	103	4.7	1330	2130	530	750	<b>29434/YAD</b>
<b>180</b>	300	73	3	974	3000	630	900	<b>29336/YAD</b>
	360	109	4.7	1330	2130	750	750	<b>29436/YAD</b>
<b>220</b>	300	48	2	484	910	850	1300	<b>29244/YAD</b>
<b>240</b>	440	122	6	2420	8000	530	750	<b>29448A</b>
	440	122	6	1920	3550	530	750	<b>29448/YAD</b>
<b>260</b>	360	60	2.1	798	1550	530	750	<b>29252/YAD</b>
	480	132	6	3200	11000	530	750	<b>29452A</b>

Other dimensions					Abutment and fillet dimensions			Weight
d1	D1	B	C	A	d <sub>amin</sub>	D <sub>amax</sub>	r <sub>amax</sub>	
mm					mm			
103	135	31	23	44	105	125	2	3.87
117	155	35	25	50	120	141	2	5.33
132	170	39	29	56	135	158	2	7.13
146	190	45	32	62	150	175	2.5	10.5
140	175	31	24	64	145	164	2	5.08
161	188	34	30	57	160	181	2	6.88
	181	222	48	38	74	180	3	19.5
	181	222	48	38	74	180	2	19.4
170	200	37	29	76	175	194	2	8.26
190	240	55	44	79	195	227	3	23.0
203	247	55	47	64	205	236	3	22.7
220	270	60	48	69	220	253	3	27.3
200	240	45	32	92	205	235	2	13.5
	234	275	61	53	74	235	4	33.3
243	310	71	48	104	250	286	2	40.7
230	276	50	35	103	235	262	2.5	19.4
	265	308	67	58	82	265	2	42.3
260	286	31	24	117	260	273	5	7.92
328	370	65	59	142	335	378	5	72.7
	330	400	78	59	335	378	5	74.5
302	335	38	30	139	310	326	2	15.7
	343	400	76	65	310	326	5	95.3

# Thrust Spherical Roller Bearing(Symmetrical)

d 280~1320 mm



Principal dimensions				Basic load ratings		Limit speed ratings		Designations
d	D	T	$r_{min}$	$C_r$	$C_{or}$	Grease	Oil	
mm				kN		r/min		
<b>280</b>	440	95	5	1600	6060	530	750	<b>29356/YAD</b> <b>9069356</b>
	440	95	5	1450	6060	530	750	
<b>340</b>	460	73	3	1250	2440	530	750	<b>29268/YAD</b> <b>29468A</b>
	620	170	7.5	5050	19000	500	690	
<b>380</b>	600	132	6	3750	15200	500	690	<b>29376/P5YAD</b>
<b>420</b>	580	95	4.7	2060	4150	460	560	<b>29284/YAD</b>
<b>440</b>	780	206	9.5	7150	26000	400	450	<b>29488A</b>
<b>490</b>	655	90	5	2300	12000	400	450	<b>217/490/YAD</b>
<b>500</b>	870	224	9.5	6930	27700	260	340	<b>294/500/YAD</b>
<b>590</b>	755	95	5	2390	13200	260	340	<b>217/590/YAD</b>
<b>630</b>	850	132	6	3580	8350	250	300	<b>292/630F3/YAD</b>
<b>670</b>	900	140	6	3900	20300	200	240	<b>292/670F3/YAD</b>
<b>710</b>	950	145	6	3960	12000	200	240	<b>292/710/YAD</b>
<b>750</b>	1280	315	15	14850	31000	80	100	<b>294/750F1/YAD</b> <b>294/750F3/YAD</b>
	1280	315	15	14850	31000	80	100	
<b>1320</b>	1540	175	6	6500	48500	60	80	<b>217/1320</b>

Other dimensions					Abutment and fillet dimensions			Weight
d1	D1	B	C	A	damin	Damax	ramax	
mm					mm			
348	413	64	46	158	355	390	4	49.1
348	413	64	46	158	355	390	4	49.1
388	438	48	36	204	400	422	2.5	31.4
450	520	102	77	201	440	500	6	197
475	561	106.5	61.4	216	480	550	5	131
489	548	62	46	251	500	525	4	78.9
583	650	115	96.5	260	550	630	8	355
552	627	52	40	482	615	635	4	73.7
654	760	140	108	290	685	755	8	462
654	727	55	41.5	570	715	735	4	90
728	800	86	65	338	740	780	5	231
750	830	86	70	365	760	820	5	210
805	895	92	75	380	820	880	5	279
972	1152	160	158	448	1015	1120	12	1340
972	1152	160	158	448	1015	1120	12	1340
1380	1510	98	72	1446	1495	1515	5	514