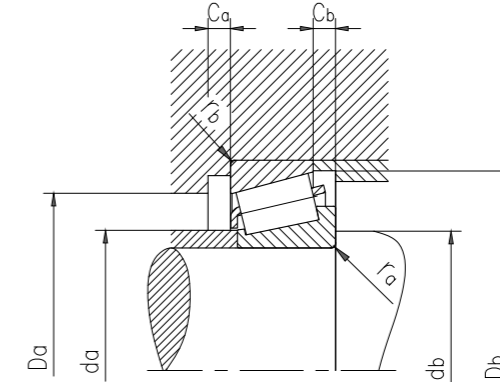
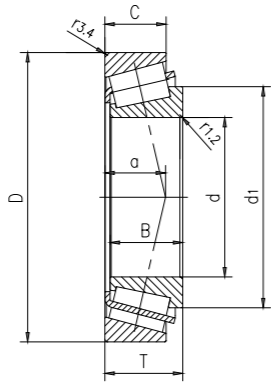


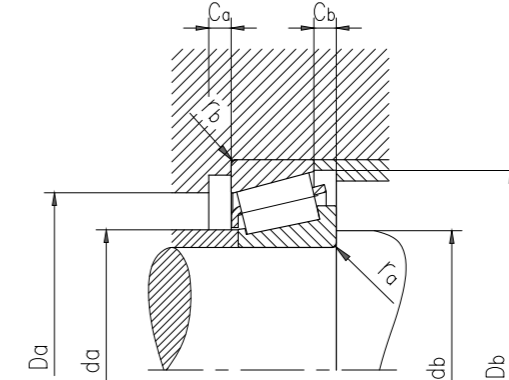
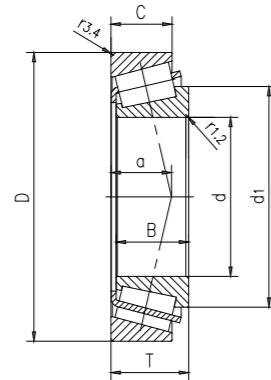
Inch single row tapered roller bearings



Type	Series	Main dimensions			Dimensions					Shoulder and chamfer dimensions									
		d	D	T	d ₁	B	C	r _{1,2}	r _{3,4}	a	d _a	d _b	D _a	D _a	D _b	C _a	C _b	r _a	r _b
		mm			mm					mm									
-																			
A4059/A4138	A4000	15	34.988	10.998	25.3	10.988	8.73	0.8	1.3	8	20	20.5	28	29	31	2	2	0.8	1.3
11590/11520	11500	15.875	42.862	14.288	31.1	14.288	9.525	1.5	1.5	12	23	23.5	32	36.5	38	2	4.5	1.5	1.5
LM11749/710	LM11700	17.462	39.878	13.843	28.7	14.605	10.668	1.3	1.3	8	23	24.5	35	34	36	2	3	1.3	1.3
LM11949/910	LM11900	19.05	45.237	15.494	31.4	16.6373	12.065	1.3	1.3	9	26	26	38	39	41	3	3	1.3	1.3
M12649/610	M12600	21.43	50.005	17.526	34.6	18.288	13.97	1.3	1.3	10	28	28.5	43	43.5	46	3	3.5	1.3	1.3
LM12749/710	LM12700	22	45.237	15.494	34.8	16.637	12.065	1.3	1.3	10	28	29	39	39	42	3	3	1.3	1.3
LM12749/711	LM12700	22	45.974	15.494	34.8	16.637	12.065	1.3	1.3	10	28	29	39	40	42	3	3	1.3	1.3
1380/13281300		22.225	52.388	19.368	36	20.168	14.288	1.5	1.5	11	29	30	45	45.5	48	4	5	1.5	1.5
L44643/610	L44600	25.4	50.292	14.224	39.6	14.732	10.668	1.3	1.3	10	33	32.5	44	44	47	2	3.5	1.3	1.3
15578/1552015500		1	57.15	17.462	42.3	17.462	13.495	1.3	1.5	12	35	33	49	50	53	3	3.5	1.3	1.5
M84548/510	M84500	1	57.15	19.431	42.5	19.431	14.732	1.5	1.5	15	33	33.5	45	50	53	3	4.5	1.5	1.5
15101/1524515000		1	62	19.05	45.8	20.638	14.288	0.8	1.3	12	38	32	54	55	58	4	4.5	0.8	1.3
15103S/15243	15000	26.162	61.912	19.05	45.8	19.939	14.288	0.8	2	12	38	33	54	54	58	4	4.5	0.8	2
15103S/15245	15000	1.03	62	19.05	45.8	19.939	14.288	0.8	1.3	12	38	33	54	55	58	4	4.5	0.8	1.3
L44649/610	L44600	26.988	50.292	14.224	39.6	14.732	10.668	3.5	1.3	10	33	38.5	44	44	47	2	3.5	3.5	1.3
1982/1924A	1900	27.487	57.159	19.845	42	19.355	15.875	2.5	0.8	13	35	37.5	49	51	54	3	3.5	2.5	0.8
1985/1922	1900	28.575	57.15	19.845	42.1	19.355	15.875	0.8	1.5	13	35	35	49	50	54	3	3.5	0.8	1.5
1988/1922	1900	1.125	57.15	19.845	42	19.355	15.875	3.5	1.5	13	35	40.5	49	50	54	3	3.5	3.5	1.5
M86647/610	M86600	1.125	64.292	21.433	50.1	21.433	16.67	1.5	1.5	17	38	36.5	51	57	60	3	4.5	1.5	1.5
L45449/410	L45400	29	50.292	14.224	40.7	14.732	10.668	3.5	1.3	10	34	41	45	44	48	3	3.5	3.5	1.3
M86649/610	M86600	30.162	64.292	21.433	50.1	21.433	16.67	1.5	1.5	17	38	38.5	51	57	60	3	4.5	1.5	1.5
M88043/010	M88000	1.1875	68.262	22.225	52.3	22.28	17.462	2.4	1.6	18	41	40	54	61	64	3	4.5	2.4	1.6
LM67048/010	LM67000	31.75	59.131	15.875	45.6	16.77	11.811	3.6	1.3	12	38	44	51	52	55	3	4	3.6	1.3
15123/15243	15000	1.25	61.912	18.161	45.7	19.05	14.288	3.6	2	12	38	44	54	54	58	4	3.5	3.6	2
15123/15245	15000	1.25	62	18.161	45.7	19.05	14.288	3.6	1.3	12	38	44	54	55	58	4	3.5	3.6	1.3
HM88542/510	HM88500	1.25	73.025	29.37	56.9	27.783	23.02	1.2	3.3	23	42	39.5	55	62	69	3	6	1.2	3.3
M88048/010	M88000	33.338	68.262	22.225	52.3	22.28	17.462	0.8	1.6	18	41	40	54	61	64	3	4.5	0.8	1.6
14131/14276	14000	1.3125	69.012	19.845	50.7	19.583	15.875	0.8	1.3	15	43	40	57	62	63	3	3.5	0.8	1.3
LM48548/510	LM48500	34.925	65.088	18.034	50	18.288	13.97	3.6	1.3	14	42	47.5	57	58	61	3	4	3.6	1.3
LM48548A/510	LM48500	1.375	65.088	18.034	50	18.288	13.97	0.8	1.3	14	42	41.5	57	58	61	3	4	0.8	1.3
14137A/14276	14000	1.375	69.012	19.845	50.7	19.583	15.875	1.5	1.3	15	43	43	57	62	63	3	3.5	1.5	1.3
HM88649X/610	HM88600	1.375	72.233	25.4	56.6	25.4	19.842	1	2.3	20	42	42.5	57	63	68	5	5.5	1	2.3
HM88649/610	HM88600	1.375	72.233	25.4	56.6	25.4	19.842	2.3	2.3	20	42	45	57	63	68	5	5.5	2.3	2.3
25877/25821	25800	1.375	73.025	23.812	52.5	24.608	19.05	1.5	0.8	15	44	43	62	67	67	5	4.5	1.5	0.8
23690/23620	23600	1.375	73.025	26.988	52.3	26.975	22.225	3.5	1.5	18	42	47	59	65	67	3	4.5	3.5	1.5
HM89446/410	HM89400	1.375	76.2	29.37	59.3	28.575	23.02	3.5	3.3	23	44	47.5	58	65	72	3	6	3.5	3.3
L68149/110	L68100	34.987	59.131	15.875	48.4	16.764	11.938	3.5	1.3	13	41	47	52	52	56	3	3.5	3.5	1.3
L68149/111	L68100	1.3774	59.975	15.875	48.4	16.764	11.938	3.5	1.3	13	41	47	52	53	56	3	3.5	3.5	1.3
HM88648/610	HM88600	35.717	72.233	25.4	56.6	25.4	19.842	3.5	2.3	20	42	48	57	63	68	5	5.5	3.5	2.3
25880/25820	25800	36.487	73.025	23.812	52.5	24.608	19.05	1.5	2.3	15	44	45	62	64	67	5	4.5	1.5	2.3

Type	Series	Weight	Basic load rating		Fatigue load limit P _u	Rated speed		Calculate the coefficient		
			Dynamic C	Static C ₀		reference speed	Maximum speed	e	Y	Y ₀
		kg	kN		r/min					
A4059/A4138	A4000	0.051	17.325	13.86	1.3545	1785	231	0.46	1.3	0.7
11590/11520	11500	0.1	22.575	18.48	1.89	1365	1785	0.72	0.84	0.45
LM11749/710	LM11700	0.082	27.45	21.84	2.226	1575	189	0.28	2.1	1.1
LM11949/910	LM11900	0.12	35.49	28.875	3.45	1365	168	0.3	2	1.1
M12649/610	M12600	0.17	47.67	39.9	4.3575	126	1575	0.28	2.1	1.1
LM12749/710	LM12700	0.12	35.595	32.55	3.36	126	1575	0.31	1.9	1.1
LM12749/711	LM12700	0.12	35.595	32.55	3.36	126	1575	0.31	1.9	1.1
1380/13281300		0.2	54.75	46.2	5.4	1155	147	0.3	2	1.1
L44643/610	L44600	0.13	33.6	31.5	3.15	1155	1365	0.37	1.6	0.9
15578/1552015500		0.22	51.555	47.775	5.145	15	126	0.35	1.7	0.9
M84548/510	M84500	0.24	51.24	47.25	5.25	15	126	0.54	1.1	0.6
15101/1524515000		0.3	62.475	59.85	6.51	945	1155	0.35	1.7	0.9
15103S/15243	15000	0.29	62.475	59.85	6.51	945	1155	0.35	1.7	0.9
15103S/15245	15000	0.29	62.475	59.85	6.51	945	1155	0.35	1.7	0.9
L44649/610	L44600	0.12	33.6	31.5	3.15	1155	1365	0.37	1.6	0.9
1982/1924A	1900	0.23	58.38	53.55	5.88	15	126	0.33	1.8	1
1985/1922	1900	0.23	61.11	57.75	6.3	15	126	0.33	1.8	1
1988/1922	1900	0.23	61.11	57.75	6.3	15	126	0.33	1.8	1
M86647/610	M86600	0.35	63.42	64.5	7.14	8925	1155	0.54	1.1	0.6
L45449/410	L45400	0.11	33.39	34.125	3.5175	1155	1365	0.37	1.6	0.9
M86649/610	M86600	0.34	63.42	64.5	7.14	8925	1155	0.54	1.1	0.6
M88043/010	M88000	0.41	7.455	72.975	8.19	84	15	0.54	1.1	0.6
LM67048/010	LM67000	0.18	44.94	43.575	4.62	9975	1155	0.4	1.5	0.8
15123/15243	15000	0.24	62.475	59.85	6.51	945	1155	0.35	1.7	0.9
15123/15245	15000	0.24	62.475	59.85	6.51	945	1155	0.35	1.7	0.9
HM88542/510	HM88500	0.62	9.825	99.75	1.92	7875	945	0.54	1.1	0.6
M88048/010	M88000	0.38	7.455	72.975	8.19	84	15	0.54	1.1	0.6
14131/14276	14000	0.35	69.9	7.35	7.7175	84	15	0.37	1.6	0.9
LM48548/510	LM48500	0.25	6.9	59.85	6.51	8925	15	0.37	1.6	0.9
LM48548A/510	LM48500	0.26	6.9	59.85	6.51	8925	15	0.37	1.6	0.9
14137A/14276	14000	0.34	69.9	7.35	7.7175	84	15	0.37	1.6	0.9
HM88649X/610	HM88600	0.5	87.15	94.5	1.5	7875	945	0.54	1.1	0.6
HM88649/610	HM88600	0.5	87.15	94.5	1.5	7875	945	0.54	1.1	0.6
25877/25821	25800	0.48	93.555	92.4	1.29	84	945	0.3	2	1.1
23690/23620	23600	0.53	99.33	97.65	1.92	84	945	0.37	1.6	0.9
HM89446/410	HM89400	0.66	99.96	111.3	12.39	735	84	0.54	1.1	0.6
L68149/110	L68100	0.17	42.63	46.2	4.725	945	1155	0.43	1.4	0.8
L68149/111	L68100	0.18	42.63	46.2	4.725	945	1155	0.43	1.4	0.8
HM88648/610	HM88600	0.49	87.15	94.5	1.5	7875	945	0.54	1.1	0.6

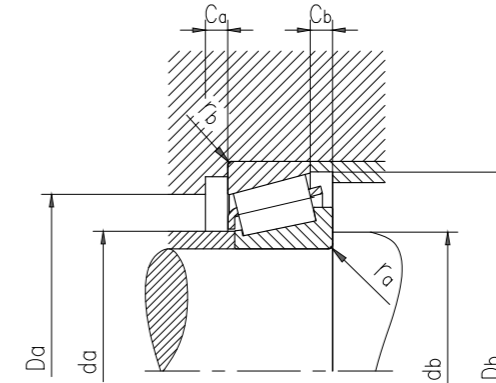
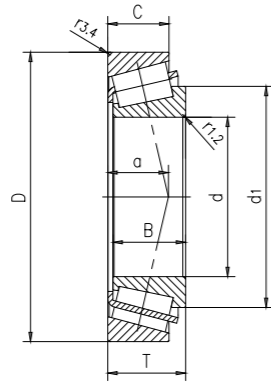
Inch single row tapered roller bearings



Type	Series	Main dimensions			Dimensions							Shoulder and chamfer dimensions							
		d	D	T	d ₁	B	C	r _{1,2}	r _{3,4}	a	d _a	d _b	D _a	D _a	D _b	C _a	C _b	r _a	r _b
		mm			mm							mm							
HM89449/410	HM89400	36.512	76.2	29.37	59.3	28.575	23.02	3.5	3.3	23	44	49	58	65	72	3	6	3.5	3.3
LM29748/710	LM29700	38.1	65.088	18.034	52	18.288	13.97	3.6	1.3	13	44	51	58	58	61	3	4	3.6	1.3
LM29749/710	LM29700	1.5	65.088	18.034	51.8	18.288	13.97	2.3	1.3	13	45	48	58	58	61	3	4	2.3	1.3
LM29749/711	LM29700	1.5	65.088	19.812	51.8	18.288	15.748	2.3	1.3	15	45	48	57	58	61	2	4	2.3	1.3
16150/16284	16000	1.5	72.238	20.638	53.8	20.638	15.875	3.5	1.3	16	45	51	60	65	66	3	4.5	3.5	1.3
16150/16283	16000	1.5	72.238	23.813	53.8	20.638	19.05	3.5	2.3	19	45	51	58	63	66	3	4.5	3.5	2.3
2788/2720	2700	1.5	76.2	23.812	54.8	25.654	19.05	3.5	3.3	15	46	51	64	65	69	5	4.5	3.5	3.3
3490/3420	3400	1.5	79.375	29.37	57.3	29.771	23.812	3.5	3.3	20	46	51	65	68	73	4	5.5	3.5	3.3
HM801346X/310	HM801300	1.5	82.55	29.37	64.1	28.575	23.02	2.3	3.3	24	49	48.5	64	71	78	4	6	2.3	3.3
HM801346/310	HM801300	1.5	82.55	29.37	64.1	28.575	23.02	0.8	3.3	24	49	45.5	64	71	78	4	6	0.8	3.3
25572/25520	25500	1.5	82.931	23.812	62.2	25.4	19.05	0.8	0.8	16	53	45.5	71	76	76	5	4.5	0.8	0.8
418/414	415	1.5	88.5	26.988	58.8	29.083	22.225	3.5	1.5	16	49	51	73	81	78	5	4.5	3.5	1.5
2789/2729	2700	39.688	76.2	23.812	54.8	25.654	19.05	3.5	0.8	15	46	52	64	70	69	5	4.5	3.5	0.8
344/332	335	40	80	21	57.6	22.403	17.826	3.5	1.3	14	50	53	72	73	75	4	3	3.5	1.3
344/332AA	335	1.5748	80	21	57.6	22.403	17.826	3.5	0.8	14	50	53	72	74	75	4	3	3.5	0.8
344A/332	335	1.5748	80	21	57.6	22.403	17.826	0.8	1.3	14	50	47	72	73	75	4	3	0.8	1.3
LM300849/811	LM300800	41	68	17.5	55.4	18	13.5	3.6	1.5	13	47	54	61	60	64	3	4	3.6	1.5
18590/18520	18500	41.275	73.025	16.667	56.2	17.463	12.7	3.5	1.5	13	50	54	66	65	68	3	3.5	3.5	1.5
LM501349/310	LM501300	1.625	73.431	19.558	57.7	19.812	14.732	3.5	0.8	15	48	54	64	67	69	4	4.5	3.5	0.8
LM501349/314	LM501300	1.625	73.431	21.43	57.7	19.812	16.604	3.5	0.8	17	48	54	63	67	69	3	4.5	3.5	0.8
11162/11300	11000	1.625	76.2	18.009	58.2	17.384	14.288	1.5	1.5	16	50	49.5	65	68	71	3	3.5	1.5	1.5
11163/11300	11000	1.625	76.2	18.009	58.2	17.384	14.288	0.8	1.5	16	50	48.5	65	68	71	3	3.5	0.8	1.5
24780/24720	24700	1.625	76.2	22.225	57.7	23.02	17.462	3.5	0.8	17	49	54	65	70	71	4	4.5	3.5	0.8
M802048/011	M802000	1.625	82.55	26.543	62.3	25.654	20.193	3.5	3.3	22	49	54	66	71	78	4	6	3.5	3.3
3585/3525	3500	1.625	87.312	30.162	63.1	30.886	23.812	1.5	3.3	19	53	50	73	76	80	4	6	1.5	3.3
HM803146/110	HM803100	1.625	88.9	30.162	69	29.37	23.02	3.5	3.3	25	53	54	70	77	84	4	7	3.5	3.3
526/522	525	1.625	101.6	34.925	72.9	36.068	26.988	3.5	3.3	21	61	55	87	90	94	6	7.5	3.5	3.3
25577/25520	25500	42.875	82.931	23.812	62.2	25.4	19.05	3.5	0.8	16	53	56	71	76	76	5	4.5	3.5	0.8
25577/25523	25500	42.875	82.931	26.988	62.2	25.4	22.225	3.5	2.3	20	53	56	70	73	76	3	4.5	3.5	2.3
25580/25520	25500	44.45	82.931	23.812	62.2	25.4	19.05	3.5	0.8	16	53	57	71	76	76	5	4.5	3.5	0.8
25580/25522	25500	1.75	82.931	26.988	62.2	25.4	22.225	3.5	2.3	20	53	57	70	73	76	3	4.5	3.5	2.3
25580/25523	25500	1.75	82.931	26.988	62.2	25.4	22.225	3.5	2.3	20	53	57	70	73	76	3	4.5	3.5	2.3
HM803149/110	HM803000	1.75	88.9	30.162	69	29.37	23.02	3.5	3.3	25	53	58	70	77	84	4	7	3.5	3.3
3782/3720	3700	1.75	93.264	30.163	71.2	30.302	23.812	3.5	3.3	21	60	58	80	81	87	4	6	3.5	3.3
53178/53377	53000	1.75	95.25	30.958	69.3	28.3	20.638	2	2.3	30	53	55	72	86	89	4	10	2	2.3
HM903249/210	HM903200	1.75	95.25	30.958	71.6	28.575	22.225	3.5	0.8	30	53	58	71	89	90	4	8.5	3.5	0.8
HM807040/010	HM-807000	1.75	104.775	36.512	81.5	36.512	28.575	3.5	3.3	28	63	58	85	93	100	6	7.5	3.5	3.3
535/532X	535	1.75	107.95	36.512	76.5	36.957	28.575	3.5	3.3	23	64	58	90	96	97	5	7.5	3.5	3.3
535/532A	535	1.75	111.125	38.1	76.5	36.957	30.162	3.5	3.3	25	64	58	89	99	97	4	7.5	3.5	3.3
358X/354X	355	45	85	20.638	62.4	21.692	17.462	2	1.5	15	55	55	76	77	80	3	3	2	1.5

Type	Series	Weight	Basic load rating		Fatigue load limit P _u	Rated speed		Calculate the coefficient		
			Dynamic C	Static C ₀		reference speed	Maximum speed	e	Y	Y ₀
		kg	kN		r/min					
HM89449/410	HM89400	0.64	99.96	111.3	12.39	735	8925	0.54	1.1	0.6
LM29748/710	LM29700	0.23	55.65	59.85	6.45	84	15	0.33	1.8	1
LM29749/710	LM29700	0.24	55.65	59.85	6.45	84	15	0.33	1.8	1
LM29749/711	LM29700	0.25	55.65	59.85	6.45	84	15	0.33	1.8	1
16150/16284	16000	0.36	63.315	63	6.8775	84	9975	0.4	1.5	0.8
16150/16283	16000	0.39	63.315	63	6.8775	84	9975	0.4	1.5	0.8
2788/2720	2700	0.5	96.75	97.65	1.92	7875	945	0.3	2	1.1
3490/3420	3400	0.68	117.6	115.5	13.125	735	8925	0.37	1.6	0.9
HM801346X/310	HM801300	0.77	111.3	123.9	14.7	735	84	0.54	1.1	0.6
HM801346/310	HM801300	0.78	111.3	123.9	14.7	735	84	0.54	1.1	0.6
25572/25520	25500	0.65	14.55	111.3	12.39	735	84	0.33	1.8	1
418/414	415	0.83	129.15	119.7	13.86	735	8925	0.26	2.3	1.3
2789/2729	2700	0.48	96.75	97.65	1.92	7875	945	0.3	2	1.1
344/332	335	0.47	91.98	84	9.675	735	8925	0.27	2.2	1.3
344/332AA	335	0.47	91.98	84	9.675	735	8925	0.27	2.2	1.3
344A/332	335	0.48	91.98	84	9.675	735	8925	0.27	2.2	1.3
LM300849/811	LM300800	0.24	56.28	61.425	6.615	84	9975	0.35	1.7	0.9
18590/18520	18500	0.28	6.585	58.8	6.51	7875	945	0.35	1.7	0.9
LM501349/310	LM501300	0.34	7.98	71.4	8.325	7875	945	0.4	1.5	0.8
LM501349/314	LM501300	0.36	7.98	71.4	8.325	7875	945	0.4	1.5	0.8
11162/11300	11000	0.34	58.485	58.8	6.45	735	945	0.48	1.25	0.7
11163/11300	11000	0.34	58.485	58.8	6.45	735	945	0.48	1.25	0.7
24780/24720	24700	0.44	88.41	9.825	1.1325	735	945	0.4	1.5	0.8
M802048/011	M802000	0.62	95.76	96.75	11.13	735	84	0.54	1.1	0.6
3585/3525	3500	0.85	132.3	138.6	15.75	6615	84	0.31	1.9	1.1
HM803146/110	HM803100	0.91	121.8	133.35	15.33	63	7875	0.54	1.1	0.6
526/522	525	1.45	193.2	199.5	22.68	588	735	0.28	2.1	1.1
25577/25520	25500	0.59	14.55	111.3	12.39	735	84	0.33	1.8	1
25577/25523	25500	0.63	14.55	111.3	12.6	735	84	0.33	1.8	1
25580/25520	25500	0.57	14.55	111.3	12.39	735	84	0.33	1.8	1
25580/25522	25500	0.61	14.55	111.3	12.39	735	84	0.33	1.8	1
25580/25523	25500	0.61	14.55	111.3	12.39	735	84	0.33	1.8	1
HM803149/110	HM803000	0.86	121.8	133.35	15.33	63	7875	0.54	1.1	0.6
3782/3720	3700	0.98	14.7	153.3	17.85	588	735	0.33	1.8	1
53178/53377	53000	0.93	113.4	11.325	11.97	5565	735	0.75	0.8	0.45
HM903249/210	HM903200	1	13.2	128.1	14.7	5565	735	0.75	0.8	0.45
HM807040/010	HM-807000	1.65	189	214.2	23.52	525	6615	0.48	1.25	0.7
535/532X	535	1.7	192.15	199.5	22.68	5565	6615	0.3	2	1.1
535/532A	535	1.85	192.15	199.5	22.68	5565	6615	0.3	2	1.1
358X/354X	355	0.5	91.665	85.575	9.765	6.3	84	0.31	1.9	1.1

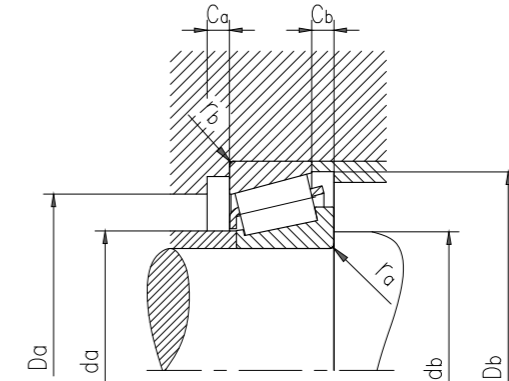
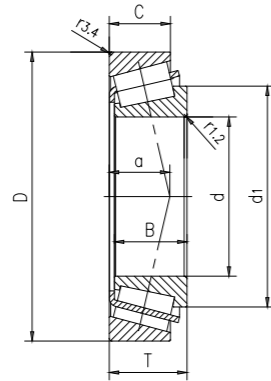
Inch single row tapered roller bearings



Type	Series	Main dimensions			Dimensions						Shoulder and chamfer dimensions								
		d	D	T	d ₁	B	C	r _{1,2}	r _{3,4}	a	d _a	d _b	D _a	D _a	D _b	C _a	C _b	r _a	r _b
		mm			mm						mm								
-																			
3586/3525	3500	45.237	87.312	30.162	63.1	30.886	23.812	3.5	3.3	19	53	58	73	76	80	4	6	3.5	3.3
LM102949/910	LM102900	45.242	73.431	19.558	59.4	19.812	15.748	3.5	0.8	14	52	58	66	67	70	3	3.5	3.5	0.8
LM603049/011	LM603000	1.7812	77.788	19.842	62	19.842	15.08	3.5	0.8	17	52	58	68	71	74	4	4.5	3.5	0.8
LM603049/011AA	LM603000	1.7812	77.788	19.842	62	19.842	15.08	3.5	0.3	17	52	58	68	72	74	4	4.5	3.5	0.3
LM603049/012	LM603000	1.7812	77.788	21.43	62	19.842	16.667	3.5	0.8	18	52	58	67	71	74	3	4.5	3.5	0.8
25590/25520	25500	45.618	82.931	23.812	62.1	25.4	19.05	3.5	0.8	16	53	58	71	76	76	5	4.5	3.5	0.8
25590/25523	25500	1.796	82.931	26.988	62.1	25.4	22.225	3.5	2.3	20	53	58	70	73	76	3	4.5	3.5	2.3
25590/25522	25500	1.796	83.058	23.876	62.1	25.4	19.114	3.5	2	17	53	58	71	74	76	5	4.5	3.5	2
LM503349A/310	LM503300	46	75	18	61	18	14	3.6	1.6	15	53	59	67	67	71	3	4	3.6	1.6
LM503349/310	LM503300	1.811	75	18	61	18	14	2.3	1.6	15	53	56	67	67	71	3	4	2.3	1.6
18690/18620	18600	46.038	79.375	17.462	60.2	17.462	13.495	2.8	1.5	14	53	57	69	71	73	3	3.5	2.8	1.5
359S/354X	355	1.8125	85	20.638	62.4	21.692	17.462	2.3	1.5	15	55	57	76	77	80	3	3	2.3	1.5
369S/362A	365	47.625	88.9	20.638	66.2	22.225	16.513	2.3	1.3	16	58	58	80	81	83	4	4	2.3	1.3
HM804846/810	HM804800	1.875	95.25	30.162	73.6	29.37	23.02	3.5	3.3	25	57	61	76	84	90	5	7	3.5	3.3
528R/522	525	1.875	101.6	34.925	72.9	36.068	26.988	8	3.3	21	61	70	87	90	94	6	7.5	8	3.3
65390/65320	65300	49.212	114.3	44.45	79.3	44.45	34.925	3.5	3.3	31	60	63	89	102	105	5	9.5	3.5	3.3
LM104949/911	LM104900	50.8	82.55	21.59	65.2	22.225	16.51	3.5	1.3	15	57	64	75	75	78	5	5	3.5	1.3
18790/18720	18700	2	85	17.462	66	17.462	13.495	3.5	1.5	16	59	64	75	77	79	3	3.5	3.5	1.5
368A/362A	365	2	88.9	20.638	66.2	22.225	16.513	3.5	1.3	16	58	64	80	81	83	4	4	3.5	1.3
368A/362X	365	2	90	25	66.2	22.225	20	3.5	2	20	58	64	78	81	83	3	5	3.5	2
3780/3720	3700	2	93.264	30.162	71.2	30.302	23.812	3.5	3.3	21	60	64	80	81	87	4	6	3.5	3.3
HM807046/010	HM807000	2	104.775	36.512	81.5	36.512	28.575	3.5	3.3	28	63	64	85	93	100	6	7.5	3.5	3.3
4580/4535	4500	2	104.775	39.688	79.5	40.157	33.338	3.5	3.3	27	65	64	87	93	98	5	6	3.5	3.3
537/532X	535	2	107.95	36.512	76.5	36.957	28.575	3.5	3.3	23	64	64	90	96	97	5	7.5	3.5	3.3
LM806649/610	LM806600	53.975	88.9	19.05	72.1	19.05	13.492	2.3	2	20	62	65	78	80	84	4	5.5	2.3	2
33895/33821	33800	2.125	95.25	27.783	72.5	28.575	22.225	1.5	2.3	20	61	63	83	85	90	6	5.5	1.5	2.3
33895/33822	33800	2.125	95.25	27.783	72.5	28.575	22.225	1.5	0.8	20	61	63	83	88	90	6	5.5	1.5	0.8
539/532X	535	2.125	107.95	36.512	76.5	36.957	28.575	3.5	3.3	23	64	67	90	96	97	5	7.5	3.5	3.3
539/532A	535	2.125	111.125	38.1	76.5	36.957	30.162	3.5	3.3	25	64	67	89	99	97	4	7.5	3.5	3.3
72212/72487	72000	2.125	123.825	36.512	89.2	32.791	25.4	3.5	3.3	36	67	68	93	112	114	4	11	3.5	3.3
387A/382A	385	57.15	96.838	21	74.2	21.946	15.875	3.5	0.8	17	65	70	87	90	91	5	5	3.5	0.8
387/382A	385	2.25	96.838	21	74.1	21.946	15.875	2.3	0.8	17	65	68	87	90	91	5	5	2.3	0.8
387A/382S	385	2.25	96.838	25.4	74.2	21.946	20.274	3.5	2.3	21	65	70	85	87	91	3	5	3.5	2.3
387/382	385	2.25	98.425	21	74.1	21.946	17.826	2.3	0.8	17	65	68	87	91	92	5	3	2.3	0.8
462/453X	455	2.25	104.775	30.162	79	29.317	24.605	2.3	3.3	23	68	68	91	93	98	4	5.5	2.3	3.3
39580/39520	39500	2.25	112.712	30.162	88.3	30.162	23.812	3.5	3.3	23	76	71	100	100	107	6	6	3.5	3.3
39581/39520	39500	2.25	112.712	30.162	88.3	30.162	23.812	8	3.3	23	76	80	100	100	107	6	6	8	3.3
39580/39528	39500	2.25	119.985	32.751	88.3	30.162	26.949	3.5	0.8	25	76	71	99	113	107	4	5.5	3.5	0.8
39581/39528	39500	2.25	119.985	32.751	88.3	30.162	26.949	8	0.8	25	76	80	99	113	107	4	5.5	8	0.8
HM911244/210	HM911200	59.987	130.175	34.099	97.1	30.924	23.812	3.5	3.3	40	74	74	102	118	124	5	10	3.5	3.3

Type	Series	Weight	Basic load rating		Fatigue load limit P _u	Rated speed		Calculate the coefficient		
			Dynamic C	Static C ₀		reference speed	Maximum speed	e	Y	Y ₀
		kg	kN		r/min					
-										
3586/3525	3500	0.78	132.3	138.6	15.75	6615	84	0.31	1.9	1.1
LM102949/910	LM102900	0.31	69.3	78.75	8.5575	735	8925	0.3	2	1.1
LM603049/011	LM603000	0.37	7.14	72.975	8.325	735	8925	0.43	1.4	0.8
LM603049/011AA	LM603000	0.37	7.14	72.975	8.325	735	8925	0.43	1.4	0.8
LM603049/012	LM603000	0.39	7.14	72.975	8.325	735	8925	0.43	1.4	0.8
25590/25520	25500	0.55	14.55	111.3	12.39	735	84	0.33	1.8	1
25590/25523	25500	0.59	14.55	111.3	12.39	735	84	0.33	1.8	1
25590/25522	25500	0.55	14.55	111.3	12.39	735	84	0.33	1.8	1
LM503349A/310	LM503300	0.3	65.25	74.55	8.325	735	8925	0.4	1.5	0.8
LM503349/310	LM503300	0.3	65.25	74.55	8.325	735	8925	0.4	1.5	0.8
18690/18620	18600	0.33	64.155	65.1	7.14	735	8925	0.37	1.6	0.9
359S/354X	355	0.49	91.665	85.575	9.765	735	84	0.31	1.9	1.1
369S/362A	365	0.55	98.7	96.75	1.92	6615	7875	0.31	1.9	1.1
HM804846/810	HM804800	0.99	139.65	153.3	18.165	588	735	0.54	1.1	0.6
528R/522	525	1.3	193.2	199.5	22.68	588	735	0.28	2.1	1.1
65390/65320	65300	2.2	237.3	235.2	26.25	525	6615	0.43	1.4	0.8
LM104949/911	LM104900	0.43	93.345	15	11.55	6615	84	0.3	2	1.1
18790/18720	18700	0.37	65.25	68.775	7.56	6615	84	0.4	1.5	0.8
368A/362A	365	0.5	98.7	96.75	1.92	6615	7875	0.31	1.9	1.1
368A/362X	365	0.58	98.7	96.75	1.92	6615	7875	0.31	1.9	1.1
3780/3720	3700	0.87	14.7	153.3	17.85	588	735	0.33	1.8	1
HM807046/010	HM807000	1.5	189	214.2	23.52	525	6615	0.48	1.25	0.7
4580/4535	4500	1.65	24.75	235.2	26.25	5565	6615	0.33	1.8	1
537/532X	535	1.55	192.15	199.5	22.68	5565	6615	0.3	2	1.1
LM806649/610	LM806600	0.44	75.75	81.9	9.45	63	735	0.54	1.1	0.6
33895/33821	33800	0.81	135.45	143.85	16.8	588	735	0.33	1.8	1
33895/33822	33800	0.81	135.45	143.85	16.8	588	735	0.33	1.8	1
539/532X	535	1.45	192.15	199.5	22.68	5565	6615	0.3	2	1.1
539/532A	535	1.65	192.15	199.5	22.68	5565	6615	0.3	2	1.1
72212/72487	72000	2	182.7	168	2.58	4515	588	0.75	0.8	0.45
387A/382A	385	0.59	14.895	17.1	12.18	588	735	0.35	1.7	0.9
387/382A	385	0.59	14.895	17.1	12.18	588	735	0.35	1.7	0.9
387A/382S	385	0.65	14.895	17.1	12.18	588	735	0.35	1.7	0.9
387/382	385	0.64	14.895	17.1	12.18	588	735	0.35	1.7	0.9
462/453X	455	1.05	157.5	168	19.53	5565	6615	0.33	1.8	1
39580/39520	39500	1.4	183.75	214.2	24.78	4725	588	0.33	1.8	1
39581/39520	39500	1.4	183.75	214.2	24.78	4725	588	0.33	1.8	1
39580/39528	39500	1.75	183.75	214.2	24.78	4725	588	0.33	1.8	1
39581/39528	39500	1.75	183.75	214.2	24.78	4725	588	0.33	1.8	1
HM911244/210	HM911200	2.05	196.35</							

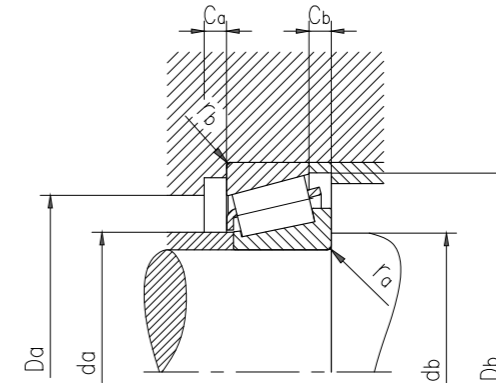
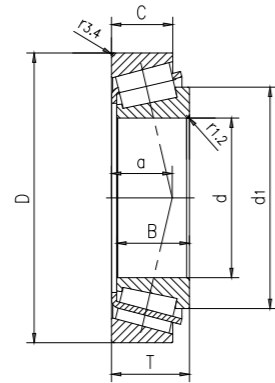
Inch single row tapered roller bearings



Type	Series	Main dimensions			Dimensions							Shoulder and chamfer dimensions							
		d	D	T	d ₁	B	C	r _{1, 2}	r _{3, 4}	a	d _a	d _b	D _a	D _a	D _b	D _b	C _a	C _b	r _a
		mm			mm							mm							
6391/K-6320	6300	2.3617	135.755	53.975	97.5	56.007	44.45	3.5	3.3	34	78	74	110	123	125	7	9.5	3.5	3.3
HM911245/210	HM911200	60.325	130.175	36.512	97.2	33.39	23.812	5	3.3	40	74	77	102	118	124	5	12.5	5	3.3
395/394A	395	63.5	110	22	86.5	21.996	18.824	3.5	1.3	20	77	77	98	102	105	4	3	3.5	1.3
39585/39520	39500	2.5	112.712	30.162	88.4	30.162	23.812	3.5	3.3	23	76	77	100	100	107	6	6	3.5	3.3
3982/3920	3980	2.5	112.712	30.163	87.9	30.048	23.812	3.5	3.3	25	75	77	96	101	105	4	6	3.5	3.3
6379/K-6320	6300	65.088	135.755	53.975	97.5	56.007	44.45	3.5	3.3	34	78	79	110	123	125	7	9.5	3.5	3.3
395S/394A	395	66.675	110	22	86.5	21.996	18.824	3.5	1.3	20	77	80	98	102	105	4	3	3.5	1.3
395A/394A	395	2.625	110	22	86.5	21.996	18.824	0.8	1.3	20	77	75	98	102	105	4	3	0.8	1.3
3984/3920	3900	2.625	112.712	30.162	87.9	30.048	23.812	3.5	3.3	25	75	80	96	101	105	4	6	3.5	3.3
39590/39520	39500	2.625	112.712	30.162	88.3	30.162	23.812	3.5	3.3	23	76	80	100	100	107	6	6	3.5	3.3
39590/39528	39500	2.625	119.985	32.751	88.3	30.162	26.949	3.5	0.8	25	76	80	99	113	107	4	5.5	3.5	0.8
HM212049/011	HM212000	2.625	122.238	38.1	90.9	38.354	29.718	3.5	3.3	26	76	80	106	110	115	7	8	3.5	3.3
6386/K-6320	6300	2.625	135.755	53.975	97.5	56.007	44.45	4.3	3.3	34	78	82	110	123	125	7	9.5	4.3	3.3
29675/29620	29600	69.85	112.712	25.4	94.4	25.4	19.05	1.5	3.3	26	82	80	100	100	108	4	6	1.5	3.3
482/472	475	2.75	120	29.795	92.5	29.007	24.237	3.5	2	25	80	84	103	110	112	4	5.5	3.5	2
47487/47420	47400	2.75	120	32.545	94.3	32.545	26.195	3.5	3.3	25	81	84	105	108	113	6	6	3.5	3.3
47487/47420A	47400	2.75	120	32.545	94.3	32.545	26.195	3.5	0.5	25	81	84	105	113	113	6	6	3.5	0.5
566/563	565	2.75	127	36.512	97.6	36.17	28.575	3.5	3.3	28	83	84	109	115	119	5	7.5	3.5	3.3
655/652	655	2.75	152.4	41.275	113	41.275	31.75	3.5	3.3	32	96	84	125	140	138	6	9.5	3.5	3.3
33281/33462	33000	71.438	117.475	30.162	94.1	30.162	23.812	3.5	3.3	26	81	85	101	105	111	5	6	3.5	3.3
H715345/311	H715300	2.8125	136.525	46.038	110	46.038	36.513	3.5	3.3	36	88	86	113	124	132	7	9.5	3.5	3.3
29685/29620	29600	73.025	112.712	25.4	94.4	25.4	19.05	3.5	3.3	26	82	87	100	100	108	4	6	3.5	3.3
33287/33462	33000	2.875	117.475	30.162	94.1	30.162	23.812	3.5	3.3	26	81	87	101	105	111	5	6	3.5	3.3
567/563	565	2.875	127	36.512	97.6	36.17	28.575	3.5	3.3	28	83	87	109	115	119	5	7.5	3.5	3.3
HM215249/210	HM215200	76	132	39	102	39	32	7	3.5	27	88	97	116	119	126	7	7	7	3.5
L814749/710	L814700	76.2	109.538	19.05	94.5	19.05	15.083	1.5	1.5	23	85	86	98	101	105	3	3.5	1.5	1.5
42687/42620	42600	3	127	30.162	101	31	22.225	3.5	3.3	26	88	90	112	114	120	5	7.5	3.5	3.3
47678/47620	47600	3	133.35	33.338	107	33.338	26.195	6.4	3.3	29	93	96	117	121	126	5	7	6.4	3.3
575/572	575	3	139.992	36.512	109	36.098	28.575	3.5	3.3	30	94	90	120	127	131	5	7.5	3.5	3.3
9285/9220	9200	3	161.925	49.212	121	46.038	31.75	3.5	3.3	47	93	91	128	149	153	7	17	3.5	3.3
34306/34478	34000	77.788	121.442	24.608	97.8	23.012	17.462	3.5	2	25	88	92	108	112	114	3	7	3.5	2
42690/42620	42600	3.0625	127	30.163	101	31	22.225	3.5	3.3	26	88	92	112	114	120	5	7.5	3.5	3.3
580/572	575	82.55	139.992	36.512	109	36.098	28.575	3.5	3.3	30	94	97	120	127	131	5	7.5	3.5	3.3
663/653	655	3.25	146.05	41.275	113	41.275	31.75	3.5	3.3	32	96	97	125	133	138	6	9.5	3.5	3.3
749A/742	745	3.25	150.089	44.45	113	46.672	36.512	3.5	3.3	31	95	97	130	137	142	8	7.5	3.5	3.3
497/492A	495	85.725	133.35	30.163	108	29.769	22.225	3.5	3.3	29	95	100	119	121	128	5	7.5	3.5	3.3
665/653	655	3.375	146.05	41.275	113	41.275	31.75	3.5	3.3	32	96	100	125	133	138	6	9.5	3.5	3.3
593/592A	593	88.9	152.4	39.688	121	36.322	30.162	3.5	3.3	36	104	103	128	139	141	4	9.5	3.5	3.3
HM518445/410	HM518400	3.5	152.4	39.688	119	39.688	30.162	6.4	3.3	32	102	109	135	139	146	7	9.5	6.4	3.3
6580/6535	6500	3.5	161.925	53.975	125	55.1	42.862	3.5	3.3	39	102	103	134	149	153	8	11	3.5	3.3

Type	Series	Weight	Basic load rating		Fatigue load limit P _u	Rated speed		Calculate the coefficient		
			Dynamic C	Static C ₀		reference speed	Maximum speed	e	Y	Y ₀
		kg	kN		r/min					
6391/K-6320	6300	3.95	37.65	42	47.775	42	525	0.33	1.8	1
HM911245/210	HM911200	2.1	196.35	189	23.52	399	525	0.83	0.72	0.4
395/394A	395	0.84	113.4	123.9	14.7	54	63	0.4	1.5	0.8
39585/39520	39500	1.25	183.75	214.2	24.78	4725	588	0.33	1.8	1
3982/3920	3980	1.25	159.6	192.15	22.26	54	588	0.4	1.5	0.8
6379/K-6320	6300	3.7	37.65	42	47.775	42	525	0.33	1.8	1
395S/394A	395	0.78	113.4	123.9	14.7	54	63	0.4	1.5	0.8
395A/394A	395	0.79	113.4	123.9	14.7	54	63	0.4	1.5	0.8
3984/3920	3900	1.15	159.6	192.15	22.26	54	588	0.4	1.5	0.8
39590/39520	39500	1.2	183.75	214.2	24.78	4725	588	0.33	1.8	1
39590/39528	39500	1.55	183.75	214.2	24.78	4725	588	0.33	1.8	1
HM212049/011	HM212000	1.85	24.45	257.25	29.4	4725	5565	0.33	1.8	1
6386/K-6320	6300	3.65	37.65	42	47.775	42	525	0.33	1.8	1
29675/29620	29600	0.97	127.5	163.8	18.48	4725	5565	0.48	1.25	0.7
482/472	475	1.35	171.15	195.3	22.68	4725	5565	0.37	1.6	0.9
47487/47420	47400	1.5	197.4	239.4	27.825	4515	5565	0.35	1.7	0.9
47487/47420A	47400	1.5	197.4	239.4	27.825	4515	5565	0.35	1.7	0.9
566/563	565	1.95	227.85	267.75	3.45	4515	525	0.37	1.6	0.9
655/652	655	3.65	283.5	336	37.275	378	4515	0.4	1.5	0.8
33281/33462	33000	1.25	159.6	199.5	22.68	4725	5565	0.44	1.35	0.8
H715345/311	H715300	3.1	286.65	372.75	4.95	399	4725	0.48	1.25	0.7
29685/29620	29600	0.89	127.5	163.8	18.48	4725	5565	0.48	1.25	0.7
33287/33462	33000	1.2	159.6	199.5	22.68	4725	5565	0.44	1.35	0.8
567/563	565	1.85	227.85	267.75	3.45	4515	525	0.37	1.6	0.9
HM215249/210	HM215200	2.15	267.75	32.25	36.225	42	54	0.33	1.8	1
L814749/710	L814700	0.57	75.75	17.1	11.55	4725	588	0.5	1.2	0.7
42687/42620	42600	1.45	179.55	214.2	25.2	42	525	0.43	1.4	0.8
47678/47620	47600	1.95	212.1	273	31.5	399	54	0.4	1.5	0.8
575/572	575	2.45	238.35	294	32.55	399	4725	0.4	1.5	0.8
9285/9220	9200	4.4	333.9	351.75	39.9	315	42	0.72	0.84	0.45
34306/34478	34000	0.92	12.75	14.7	16.65	4515	5565	0.46	1.3	0.7
42690/42620	42600	1.4	179.55	214.2	25.2	42	525	0.43	1.4	0.8
580/572	575	2.2	238.35	294	32.55	399	4725	0.4	1.5	0.8
663/653	655	2.8	283.5	336	37.275	378	4515	0.4	1.5	0.8
749A/742	745	3.4	368.55	425.25	48.825	378	4515	0.33	1.8	1
497/492A	495	1.45	186.9	231	26.775	399	4725	0.44	1.35	0.8
665/653	655	2.65	283.5	336	37.275	378	4515	0.4	1.5	0.8
593/592A	593	2.8	248.85	32.25	35.175	357	4515	0.44	1.35	0.8
HM518445/410	HM518400	2.85	315	372.75	4.95	357	42	0.4	1.5	0.8
6580/6535	6500	4.8	424.2	535.5	58.8	336	42	0.4	1.5	0.8

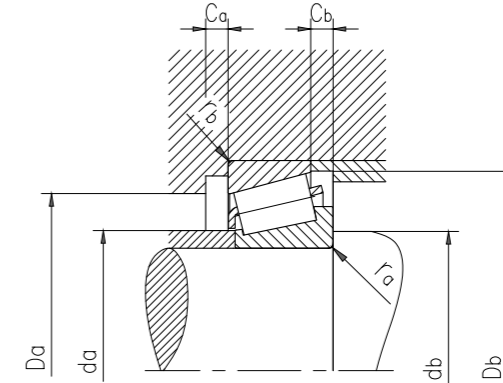
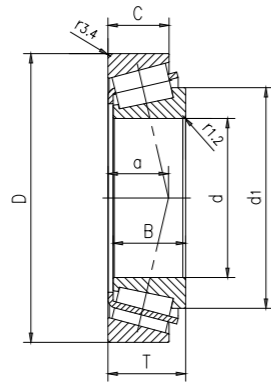
Inch single row tapered roller bearings



Type	Series	Main dimensions			Dimensions						Shoulder and chamfer dimensions								
		d	D	T	d ₁	B	C	r _{1,2}	r _{3,4}	a	d _a	d _b	D _a	D _b	C _a	C _b	r _a	r _b	
		mm			mm						mm								
HM218248/210	HM218200	90	147	40	116	40	32.5	7	3.5	29	101	111	130	134	140	7	7.5	7	3.5
6581X/6535	6500	3.5433	161.925	53.975	125	55.1	42.862	3	3.3	39	102	104	134	149	153	8	11	3	3.3
47890/47820	47800	92.075	146.05	33.338	120	34.925	26.195	3.5	3.3	32	105	106	128	133	139	6	7	3.5	3.3
598/592A	595	3.625	152.4	39.688	121	36.322	30.162	3.5	3.3	36	104	107	128	139	141	4	9.5	3.5	3.3
47896/47820	47800	95.25	146.05	33.338	120	34.925	26.195	3.5	3.3	32	105	110	128	133	139	6	7	3.5	3.3
594A/592A	595	3.75	152.4	39.688	121	36.322	30.162	5	3.3	36	104	113	128	139	141	4	9.5	5	3.3
594/592A	595	3.75	152.4	39.688	121	36.322	30.162	3.5	3.3	36	104	110	128	139	141	4	9.5	3.5	3.3
683/672	675	3.75	168.275	41.275	133	41.275	30.162	3.5	3.3	38	114	110	143	155	157	6	11	3.5	3.3
90381/90744	90300	96.838	188.912	50.8	145	46.038	31.75	3.5	3.3	61	114	112	148	176	179	6	19	3.5	3.3
HH224334/310	HH224300	99.975	212.725	66.675	158	66.675	53.975	3.5	3.3	46	132	115	184	199	202	10	12.5	3.5	3.3
HM220149A/110	HM220100	100	157	42	127	42	34	5	3.5	31	111	118	140	143	151	7	8	5	3.5
HM220149/110	HM220100	3.937	157	42	127	42	34	8	3.5	31	111	124	140	143	151	7	8	8	3.5
687/672	675	101.6	168.275	41.275	133	41.275	30.162	3.5	3.3	38	114	116	143	155	157	6	11	3.5	3.3
HH221449/410	HH221400	4	190.5	57.15	142	57.531	46.038	8	3.3	40	119	126	163	177	179	9	11	8	3.3
HH224335/310	HH224300	4	212.725	66.675	158	66.675	53.975	7	3.3	46	132	124	184	199	202	10	12.5	7	3.3
37425/37625	37000	107.95	158.75	23.02	132	21.438	15.875	3.5	3.3	36	120	123	140	145	149	4	7	3.5	3.3
56425/56650	56000	4.25	165.1	36.512	137	36.512	26.988	3.5	3.3	37	119	123	145	152	158	6	9.5	3.5	3.3
64432/64708	64000	110	180	41.275	146	41.275	30.162	3.5	3.3	41	126	125	155	167	171	6	11	3.5	3.3
64450/64700	64000	114.3	177.8	41.275	146	41.275	30.162	3.5	3.3	41	126	129	155	164	171	6	11	3.5	3.3
68450/68712	68000	4.5	180.975	34.925	144	31.75	25.4	3.5	3.3	39	129	129	158	167	170	4	9.5	3.5	3.3
HH224346/310	HH224300	4.5	212.725	66.675	158	66.675	53.975	7	3.3	46	131	137	184	199	202	10	12.5	7	3.3
938/932	935	4.5	212.725	66.675	154	66.675	53.975	7	3.3	46	130	137	175	199	193	8	12.5	7	3.3
HH224349/310	HH224300	114.975	212.725	66.675	158	66.675	53.975	7	3.3	46	132	137	184	199	202	10	12.5	7	3.3
HM624749/710	HM624700	120.65	190.5	46.038	156	46.038	34.925	3.5	1.5	41	135	136	167	180	182	8	11	3.5	1.5
48290/48220	48200	127	182.562	39.688	154	38.1	33.338	3.5	3.3	34	140	142	165	169	174	6	6	3.5	3.3
67388/67322	67300	5	196.85	46.038	164	46.038	38.1	3.5	3.3	39	146	142	177	183	189	7	7.5	3.5	3.3
798/792	795	5	206.375	47.625	167	50.013	34.925	3.3	3.3	45	144	142	178	192	195	8	12.5	3.3	3.3
L327249/210	L327200	133.35	177.008	25.4	155	26.195	20.638	1.5	1.5	28	145	144	165	167	170	5	4.5	1.5	1.5
67391/67322	67300	5.25	196.85	46.038	164	46.038	38.1	8	3.3	39	146	158	177	183	189	7	7.5	8	3.3
95525/95925	95000	5.25	234.95	63.5	178	63.5	49.213	9.7	3.3	48	152	161	198	221	217	10	14	9.7	3.3
898/892	895	139.7	228.6	57.15	181	57.15	44.45	3.5	3.3	49	155	155	195	214	215	8	12.5	3.5	3.3
HM231132/110	HM231100	5	236.538	57.15	187	56.642	44.45	3.5	3.3	44	165	156	210	222	223	9	12.5	3.5	3.3
HM231148/110	HM231100	149.225	236.538	57.15	187	56.642	44.45	6.4	3.3	44	165	171	210	222	223	10	12.5	6.4	3.3
LM330448/410	LM330400	152.4	203.2	41.275	180	41.275	34.925	3.3	3.3	38	166	168	186	189	197	5	6	3.3	3.3
M231649/610	M231600	6	222.25	46.83	185	46.83	34.925	3.5	1.5	40	169	168	200	211	210	7	11.5	3.5	1.5
LM241148/110	LM241100	203.987	276.225	42.862	236	46.038	34.133	3.5	3.3	44	220	221	257	261	265	7	8.5	3.5	3.3
67985/67920	67900	206.375	282.575	46.038	246	46.038	36.512	3.5	3.3	60	222	223	254	267	272	8	9.5	3.5	3.3
H242649/610	H242600	8.125	336.55	98.425	268	100.013	77.788	3.3	3.3	72	231	223	290	321	318	14	20.5	3.3	3.3
LM742747/710	LM742700	216.408	285.75	46.038	253	49.212	34.925	3.5	3.3	60	230	233	261	270	277	7	11	3.5	3.3
M244249A/210	M244200	220.662	314.325	61.912	264	66.675	49.212	1.5	3.3	56	241	234	284	299	300	9	12.5	1.5	3.3

Type	Series	Weight	Basic load rating		Fatigue load limit P _u	Rated speed		Calculate the coefficient		
			Dynamic C	Static C ₀		reference speed	Maximum speed	e	Y	Y ₀
		kg	kN		r/min					
HM218248/210	HM218200	2.55	294	372.75	4.95	357	4515	0.33	1.8	1
6581X/6535	6500	4.75	424.2	535.5	58.8	336	42	0.4	1.5	0.8
47890/47820	47800	2.1	219.45	294	33.75	357	4515	0.44	1.35	0.8
598/592A	595	2.7	248.85	32.25	35.175	357	4515	0.44	1.35	0.8
47896/47820	47800	1.95	219.45	294	33.75	357	4515	0.44	1.35	0.8
594A/592A	595	2.55	248.85	32.25	35.175	357	4515	0.44	1.35	0.8
594/592A	595	2.55	248.85	32.25	35.175	357	4515	0.44	1.35	0.8
683/672	675	3.75	32.4	383.25	4.95	315	399	0.48	1.25	0.7
90381/90744	90300	5.75	365.4	393.75	43.575	273	357	0.88	0.68	0.4
HH224334/310	HH224300	11.5	649.95	871.5	92.4	231	315	0.33	1.8	1
HM220149A/110	HM220100	2.9	318.15	42	44.625	336	42	0.33	1.8	1
HM220149/110	HM220100	2.9	318.15	42	44.625	336	42	0.33	1.8	1
687/672	675	3.45	32.4	383.25	4.95	315	399	0.48	1.25	0.7
HH221449/410	HH221400	7	563.85	661.5	71.4	294	357	0.33	1.8	1
HH224335/310	HH224300	11	649.95	871.5	92.4	231	315	0.33	1.8	1
37425/37625	37000	1.4	13.2	171.15	19.215	336	399	0.6	1	0.6
56425/56650	56000	2.7	268.8	372.75	39.375	315	378	0.5	1.2	0.7
64432/64708	64000	3.95	322.35	435.75	44.625	294	357	0.52	1.15	0.6
64450/64700	64000	3.6	322.35	435.75	44.625	294	357	0.52	1.15	0.6
68450/68712	68000	2.95	238.35	294	31.5	294	357	0.5	1.2	0.7
HH224346/310	HH224300	10	649.95	871.5	92.4	231	315	0.33	1.8	1
938/932	935	10	657.3	83.25	85.575	273	336	0.33	1.8	1
HH224349/310	HH224300	10	649.95	871.5	92.4	231	315	0.33	1.8	1
HM624749/710	HM624700	4.85	47.4	567	58.8	273	336	0.43	1.4	0.8
48290/48220	48200	3.3	295.5	462	46.2	273	336	0.3	2	1.1
67388/67322	67300	5.2	414.75	614.25	63	252	315	0.35	1.7	0.9
798/792	795	6.1	445.2	614.25	64.5	252	315	0.46	1.3	0.7
L327249/210	L327200	1.7	174.3	294	29.4	273	336	0.35	1.7	0.9
67391/67322	67300	4.65	414.75	614.25	63	2625	315	0.35	1.7	0.9
95525/95925	95000	11	717.15	945	96.75	231	294	0.37	1.6	0.9
898/892	895	8.95	66.9	84	84	231	294	0.43	1.4	0.8
HM231132/110	HM231100	10	66.45	892.5	9.825	231	273	0.31	1.9	1.1
HM231148/110	HM231100	9.05	66.45	892.5	9.825	231	273	0.31	1.9	1.1
LM330448/410	LM330400	3.7	263.55	54	47.775	252	294	0.35	1.7	0.9
M231649/610	M231600	5.85	42	661.5	65.1	231	273	0.33	1.8	1
LM241148/110	LM241100	7.2	51.9	819	75.6	1785	273	0.31	1.9	1.1
67985/67920	67900	8.45	488.25	871.5	8.325	168	21	0.5	1.2	0.7
H242649/610	H242600	34	1291.5	2268	199.5	1365	189	0.33	1.8	1
LM742747/710	LM742700	7.9	489.3	892.5	8.325	168	21	0.48	1.25</	

Inch single row tapered roller bearings



Type	Series	Main dimensions			Dimensions						Shoulder and chamfer dimensions								
		d	D	T	d ₁	B	C	r _{1,2} min.	r _{3,4} min.	a	d _a max.	d _b min.	D _a min.	D _a max.	D _b min.	C _a min.	C _b min.	r _a max.	r _b max.
		mm			mm						mm								
LM245846/810	LM245800	230.188	317.5	47.625	268	52.388	36.512	3.3	3.3	49	249	247	296	302	304	9	11	3.3	3.3
544091/544118	544000	231.775	300.038	33.338	260	31.75	23.812	3.5	3.3	49	247	249	278	284	284	5	9.5	3.5	3.3
LM245848/810	LM245800	9.125	317.5	47.625	268	52.388	36.512	3.3	3.3	49	249	249	296	302	304	9	11	3.3	3.3
LM545848/810	LM545800	234.848	314.325	49.212	271	53.975	36.512	3.5	3.3	57	250	252	291	299	304	9	12.5	3.5	3.3
M349547/510	M349500	255.6	342.9	57.15	296	63.5	44.45	1.5	3.3	59	273	269	318	327	331	9	12.5	1.5	3.3
M349549/510	M349500	257.175	342.9	57.15	296	57.15	44.45	6.4	3.3	59	273	281	318	327	331	9	12.5	6.4	3.3
M249747/710	M249700	358.775	71.438	1	303	76.2	53.975	1.5	3.3	64	276	271	326	343	343	11	17	1.5	3.3
38880/38820	38800	263.525	325.438	28.575	293	28.575	25.4	1.5	1.5	48	282	277	307	313	313	4	3	1.5	1.5
LM451345/310	LM451300	10.375	355.6	57.15	309	57.15	44.45	3.5	3.3	61	285	281	329	339	343	10	12.5	3.5	3.3
L555249/210	L555200	292.1	374.65	47.625	330	47.625	34.925	3.5	3.3	64	310	310	350	358	361	9	12.5	3.5	3.3
L357049/010	L357000	304.8	393.7	50.8	347	50.8	38.1	6.4	3.3	64	327	329	368	377	379	7	12.5	6.4	3.3
LM757049/010	LM757000	304.8	406.4	63.5	356	63.5	47.625	6.4	3.3	79	327	329	370	389	391	10	15.5	6.4	3.3
HM259048/010/HA4	HM259000	317.5	447.675	85.725		3.375	2.6875	0.14	0.13										
HM261049/010	HM261000	333.375	469.9	90.488		3.5625	2.1825	0.25	0.13										
LM361649/610	LM361600	342.9	450.85	66.675		2.625	2.0625	0.33	0.14										
LM361649/610A/610	LM361600	343.154	450.85	66.675		2.625	2.0625	0.33	0.14										
HM262749/710	HM262700	346.075	488.95	95.25		3.75	2.9375	0.25	0.13										
L865547/512	L865500	381	479.425	49.213		1.875	1.375	0.25	0.13										
LM567949/910/HA1	LM567900	406.4	549.275	85.725		3.3125	2.4257	0.25	0.13										
LM869448/410	LM869400	431.8	571.5	74.612		2.9375	2.0625	0.13	0.13										
L570649/610	L570600	457.2	573.088	74.612		2.9375	2.25	0.25	0.25										

Type	Series	Weight	Basic load rating		Fatigue load limit P _u	Rated speed		Calculate the coefficient		
			Dynamic C	Static C ₀		reference speed	Maximum speed	e	Y	Y ₀
		kg	kN		r/min					
LM245846/810	LM245800	11	583.8	129	94.5	1575	189	0.31	1.9	1.1
544091/544118	544000	5.2	28.35	446.25	4.95	1575	1995	0.4	1.5	0.8
LM245848/810	LM245800	10.5	583.8	129	94.5	1575	189	0.31	1.9	1.1
LM545848/810	LM545800	10.5	638.4	15	96.75	1575	189	0.4	1.5	0.8
M349547/510	M349500	15	732.9	147	131.25	1365	168	0.35	1.7	0.9
M349549/510	M349500	14	732.9	147	131.25	1365	168	0.35	1.7	0.9
M249747/710	M249700	21.5	31.5	1848	163.8	1365	168	0.33	1.8	1
38880/38820	38800	5.3	286.65	577.5	5.4	147	1785	0.37	1.6	0.9
LM451345/310	LM451300	16	828.45	147	128.1	1365	168	0.35	1.7	0.9
L555249/210	L555200	12.5	565.95	1197	12.9	126	1575	0.4	1.5	0.8
L357049/010	L357000	15	687.75	1281	19.2	1155	147	0.35	1.7	0.9
LM757049/010	LM757000	22.5	813.75	1785	15.15	1155	1365	0.44	1.35	0.8
HM259048/010/HA4	HM259000	41	1431.15	2835	231	945	126	0.33	1.8	1
HM261049/010	HM261000	47	1499.4	2992.5	243.6	892.5	126	0.33	1.8	1
LM361649/610	LM361600	28	15	231	189	945	126	0.35	1.7	0.9
LM361649/610A/610	LM361600	28	15	231	189	945	126	0.35	1.7	0.9
HM262749/710	HM262700	55	169.65	337.5	267.75	892.5	1155	0.33	1.8	1
L865547/512	L865500	20	669.9	1575	126	84	1155	0.5	1.2	0.7
LM567949/910/HA1	LM567900	53.5	154.35	322.5	247.8	735	997.5	0.4	1.5	0.8
LM869448/410	LM869400	49	122.25	2677.5	214.2	73.5	945	0.54	1.1	0.6
L570649/610	L570600	43.5	1265.25	315	239.4	73.5	945	0.4	1.5	0.8