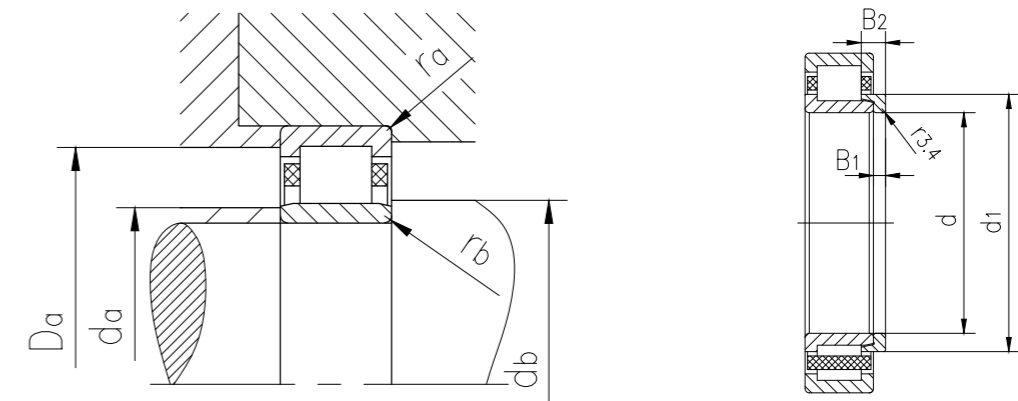
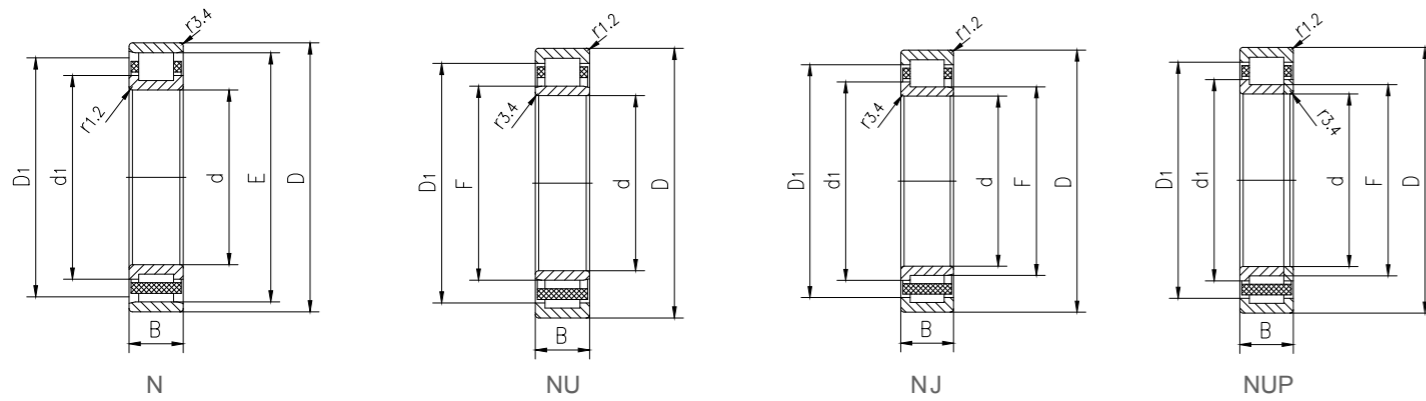


Suffixes of available designs

Suffix	Meaning
A	Deviating or modified internal design
CV	Modified internal design, full complement roller set
EC	Optimized internal design incorporating more and/or larger rollers and with modified roller end / large contact
ADB	Modified internal design and seal (for NNF 50 series)
B	Improved seal and grease
DA	Modified internal design and seal (for 3194** series)
K	Tapered bore, taper 1:12
N	Snap ring groove in the outer ring
NR	Snap ring groove in the outer ring, with associated snap ring
N1	One locating slot (notch) in one outer ring side face
N2	Two locating slots (notches) in one outer ring side face, 180° apart
-2LS	Contact seal, PUR, on both sides
FR	Pin-type steel cage, pierced rollers
J	Stamped steel cage, roller centred
JA	Sheet steel cage, outer ring centred
JB	Sheet steel cage, inner ring centred
L	Machined light alloy cage, roller centred
LA	Machined light alloy cage, outer ring centred
LB	Machined light alloy cage, inner ring centred
LL	Machined light alloy cage, window-type, inner or outer ring centred (depending on bearing design)
M	Machined brass cage, roller centred
MA(S)	Machined brass cage, outer ring centred. The S indicates a lubrication groove in the guiding surface.
MB	Machined brass cage, inner ring centred
MH	Machined brass cage, inner ring raceway centred
ML	Machined brass cage, window-type, inner or outer ring centred (depending on bearing design)
MP	Machined brass cage, window-type, inner or outer ring centred (depending on bearing size)
MR	Machined brass cage, window-type, roller centred
P	Glass fibre reinforced PA66 cage, roller centred
PA	Glass fibre reinforced PA66 cage, outer ring centred
PH	Glass fibre reinforced PEEK cage, roller centred

Suffix	Meaning
PHA	Glass fibre reinforced PEEK cage, outer ring centred
V	Full complement of rollers (no cage)
VH	Full complement of rollers (no cage), self-retaining
HA1	Case-hardened inner and outer rings
HA2	Case-hardened outer ring
HA3	Case-hardened inner ring
HB1	Bainite-hardened inner and outer rings
HB3	Bainite-hardened inner ring
HN1	Inner and outer rings with special surface heat treatment
L4B	Bearing rings and rollers black oxidized
L5B	Rollers black oxidized
L7B	Inner ring and rollers black oxidized
CN	Normal radial internal clearance; only used together with an additional letter that identifies a
C2	Radial internal clearance smaller than Normal
C3	Radial internal clearance greater than Normal
C4	Radial internal clearance greater than C3
C5	Radial internal clearance greater than C4
DR	Set of two matched bearings
TR	Set of three matched bearings
QR	Set of four matched bearings
S1	Bearing rings heat stabilized for operating temperatures ≤ 200 °C (390 °F)
S2	Bearing rings heat stabilized for operating temperatures ≤ 250 °C (480 °F)
W33	Annular groove and three lubrication holes in the outer ring
PEX	KMR Explorer bearing, used only when same-sized conventional and KMR Explorer bearings are available
VA301	Bearing for railway vehicle traction motors
VA305	VA301 + special inspection routines
VA350	Bearing for railway axleboxes
VA380	Bearing for railway axleboxes in accordance with EN 12080, class 1
VA3091	VA301 + external surfaces of the outer ring are coated with aluminium oxide
VC025	Bearing with special wear-resistant raceways for applications in heavily contaminated environments
VE901	Modified internal design
VQ015	Inner ring with crowned raceway for increased permissible misalignment

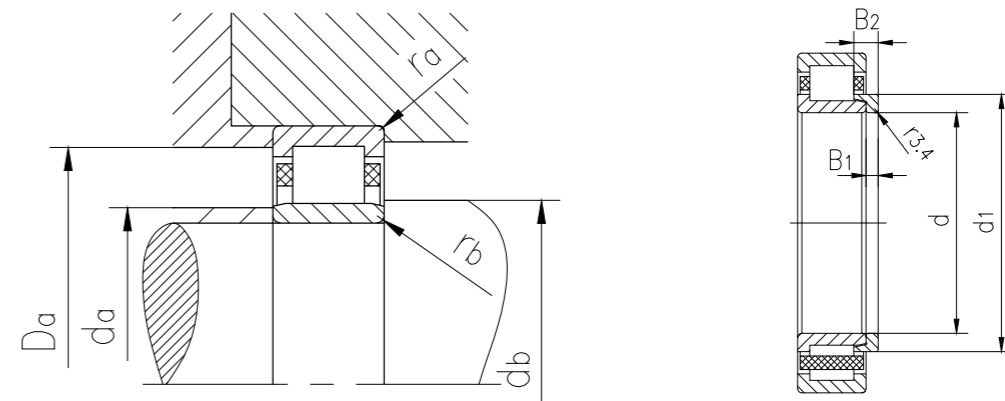
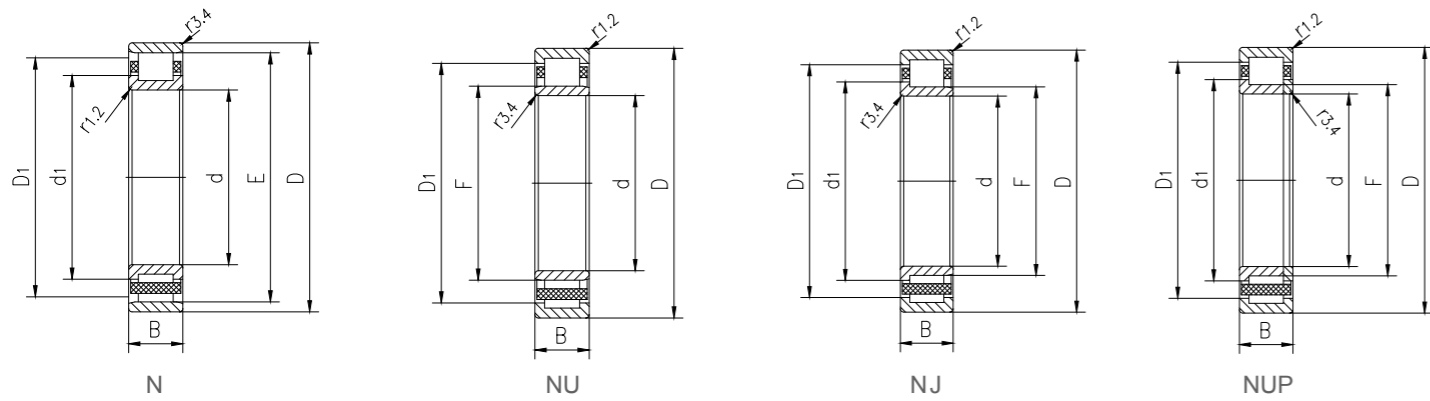
Single row cylindrical roller bearings



Type			Main dimensions			Dimensions							Shoulder and chamfer dimensions						
Bearings with standard cage	Optional Standard Cage	Corner ring	d	D	B	d ₁	D ₁	F, E	r _{1,2} min.	r _{3,4} min.	s max.	B ₁	B ₂	d _a min.	d _a max.	d _b min.	D _a max.	r _a max.	r _b max.
			mm			mm							mm						
NU202ECP	PHA	-	15	35	11	-	27.7	19.3	0.6	0.3	1	-	-	17.4	18.4	21	31.3	0.6	0.3
NJ202ECP	PHA	-	15	35	11	21.9	27.7	19.3	0.6	0.3	1	-	-	18.2	18.4	23	31.3	0.6	-
N203ECP	PH	-	17	40	12	25	-	35.1	0.6	0.3	1	-	-	20.7	33	37	37.1	0.6	0.3
NU203ECP	PHA	-	17	40	12	-	32.35	22.1	0.6	0.3	1	-	-	19.9	21.1	24	36	0.6	0.3
NJ203ECP	PHA	-	17	40	12	25	32.35	22.1	0.6	0.6	1	-	-	20.7	21.1	27	36	0.6	-
NUP203ECP	PHA	-	17	40	12	25	32.35	22.1	0.6	0.3	-	-	-	20.7	-	27	36	0.6	-
NU2203ECP	-	-	17	40	16	-	32.35	22.1	0.6	0.3	1.5	-	-	19.9	21.1	24	36	0.6	0.3
NJ2203ECP	-	-	17	40	16	25	32.35	22.1	0.6	0.3	1.5	-	-	20.7	21.1	27	36	0.6	-
NUP2203ECP	-	-	17	40	16	25	32.35	22.1	0.6	0.3	-	-	-	20.7	-	27	36	0.6	-
N303ECP	-	-	17	47	14	27.7	-	40.2	1	0.6	1	-	-	22.1	38	42	42.7	1	0.6
NJ303ECP	-	-	17	47	14	27.7	36.75	24.2	1	0.6	1	-	-	22.1	23.1	29	41.7	1	-
NU303ECP	-	-	17	47	14	-	36.75	24.2	1	0.6	1	-	-	21.1	23.1	26	41.7	1	0.6
N204ECP	-	-	20	47	14	29.7	-	41.5	1	0.6	1	-	-	25	40	43	43.5	1	0.6
NJ204ECP	ML,PHA	-	20	47	14	29.7	38.44	26.5	1	0.6	1	-	-	25	25.4	31	41.7	1	-
NU204ECP	ML,PHA	-	20	47	14	-	38.44	26.5	1	0.6	1	-	-	24	25.4	28	41.7	1	0.6
NUP204ECP	ML,PHA	-	20	47	14	29.7	38.44	26.5	1	0.6	-	-	-	25	-	31	41.7	1	-
NJ2204ECP	-	-	20	47	18	29.7	38.3	26.5	1	0.6	2	-	-	25	25.4	31	41.7	1	-
NU2204ECP	-	-	20	47	18	-	38.3	26.5	1	0.6	2	-	-	24	25.4	28	41.7	1	0.6
NU304ECP	-	HJ304EC	20	52	15	-	41.85	27.5	1.1	0.6	0.9	4	6.5	24.1	26.2	29	45.4	1	0.6
N304ECP	-	-	20	52	15	31.2	-	45.5	1.1	0.6	0.9	-	-	26.1	44	47	48	1	0.6
NJ304ECP	-	HJ304EC	20	52	15	31.2	41.85	27.5	1.1	0.6	0.9	4	6.5	26.1	26.2	33	45.4	1	-
NUP304ECP	-	-	20	52	15	31.2	41.85	27.5	1.1	0.6	-	-	-	26.1	-	33	45.4	1	-
NU2304ECP	-	-	20	52	21	-	41.85	27.5	1.1	0.6	1.9	-	-	24.1	26.2	29	45.4	1	0.6
NJ2304ECP	-	-	20	52	21	31.2	41.85	27.5	1.1	0.6	1.9	-	-	26.1	26.2	33	45.4	1	-
NUP2304ECP	-	-	20	52	21	31.2	41.85	27.5	1.1	0.6	-	-	-	26.1	-	33	45.4	1	-
NU1005	-	-	25	47	12	-	38.8	30.5	0.6	0.3	1.5	-	-	27.1	29.5	32	43.1	0.6	0.3
N205ECP	-	-	25	52	15	34.7	-	46.5	1	0.6	1.3	-	-	29.9	45	48	48.5	1	0.6
NU205ECP	J,ML,PH,PHA	HJ205EC	25	52	15	-	43.3	31.5	1	0.6	1.3	3	6	28.9	30.4	33	46.4	1	0.6
NJ205ECP	J,ML,PH,PHA	-	25	52	15	34.7	43.3	31.5	1	0.6	1.3	-	-	29.9	30.4	36	46.4	1	-
NUP205ECP	J,ML,PH,PHA	-	25	52	15	34.7	43.3	31.5	1	0.6	-	-	-	29.9	-	36	46.4	1	-
NU2205ECP	ML,PH	HJ2205EC	25	52	18	-	43.3	31.5	1	0.6	1.8	3	6.5	28.9	30.4	33	46.4	1	0.6
NJ2205ECP	ML,PH	HJ2205EC	25	52	18	34.7	43.3	31.5	1	0.6	1.8	3	6.5	29.9	30.4	36	46.4	1	-
NUP2205ECP	ML,PH	-	25	52	18	34.7	43.3	31.5	1	0.6	-	-	-	29.9	-	36	46.4	1	-
N305ECP	-	-	25	62	17	38.1	-	54	1.1	1.1	1.3	-	-	31	52	56	56.4	1	1
NU305ECP	J,ML	HJ 305 EC	25	62	17	-	50.15	34	1.1	1.1	1.3	4	7	31	32.5	36	54.9	1	1
NJ305ECP	J,ML	HJ 306 EC	25	62	17	38.1	50.15	34	1.1	1.1	1.3	4	7	31	32.5	40	54.9	1	-
NUP305ECP	J,ML	-	25	62	17	38.1	50.15	34	1.1	1.1	-	-	-	31	-	40	54.9	1	-

Type			Weight	Weight of corner ring	Basic load rating		Fatigue load limit P _u	Rated speed reference speed	Maximum speed	Calculate the coefficient k _f
Bearings with standard cage	Optional Standard Cage	Corner ring			Dynamic C	Static C ₀				
			kg			kN		r/min		-
NU202ECP	PHA	-	0.047	-	13.13	10.71	1.28	23100	27300	0.15
NJ202ECP	PHA	-	0.048	-	13.125	10.71	1.281	23100	27300	0.15
N203ECP	PH	-	0.066	-	21	15.015	1.8165	21000	23100	0.12
NU203ECP	PHA	-	0.068	-	21	15.015	1.8165	21000	23100	0.15
NJ203ECP	PHA	-	0.069	-	21	15.015	1.8165	21000	23100	0.15
NUP203ECP	PHA	-	0.072	-	21	15.015	1.8165	21000	23100	0.15
NU2203ECP	-	-	0.087	-	28.875	22.68	2.7825	21000	23100	0.2
NJ2203ECP	-	-	0.093	-	28.875	22.68	2.7825	21000	23100	0.2
NUP2203ECP	-	-	0.097	-	28.875	22.68	2.7825	21000	23100	0.2
N303ECP	-	-	0.12	-	29.925	21.42	2.6775	17850	21000	0.12
NJ303ECP	-	-	0.12	-	29.925	21.42	2.6775	17850	21000	0.15
NU303ECP	-	-	0.12	-	29.925	21.42	2.6775	17850	21000	0.15
N204ECP	-	-	0.11	-	29.925	23.1	2.8875	17850	19950	0.12
NJ204ECP	ML,PHA	-	0.11	-	29.925	23.1	2.8875	17850	19950	0.15
NU204ECP	ML,PHA	-	0.11	-	29.925	23.1	2.8875	17850	19950	0.15
NUP204ECP	ML,PHA	-	0.12	-	29.925	23.1	2.8875	17850	19950	0.15
NJ2204ECP	-	-	0.14	-	36.225	28.875	3.6225	17850	19950	0.2
NU2204ECP	-	-	0.14	-	36.225	28.875	3.6225	17850	19950	0.2
NU304ECP	-	HJ304EC	0.14	0.017	37.275	27.3	3.4125	15750	18900	0.15
N304ECP	-	-	0.15	-	37.275	27.3	3.4125	15750	18900	0.12
NJ304ECP	-	HJ304EC	0.15	0.017	37.275	27.3	3.4125	15750	18900	0.15
NUP304ECP	-	-	0.16	-	37.275	27.3	3.4125	15750	18900	0.15
NU2304ECP	-	-	0.21	-	49.875	39.9	5.04	15750	18900	0.25
NJ2304ECP	-	-	0.22	-	49.875	39.9	5.04	15750	18900	0.25
NUP2304ECP	-	-	0.22	-	49.875	39.9	5.04	15750	18900	0.25
NU1005	-	-	0.082	-	14.91	13.86	1.47	18900	18900	0.1
N205ECP	-	-	0.13	-	34.125	28.35	3.5175	15750	16800	0.12
NU205ECP	J,ML,PH,PHA	HJ205EC	0.13	0.015	34.125	28.35	3.5175	15750	16800	0.15
NJ205ECP	J,ML,PH,PHA	-	0.14	-	34.125	28.35	3.5175	15750	16800	0.15
NUP205ECP	J,ML,PH,PHA	-	0.14	-	34.125	28.35	3.5175	15750	16800	0.15
NU2205ECP	ML,PH	HJ2205EC	0.16	0.014	40.95	35.7	4.4625	15750	16800	0.2
NJ2205ECP	ML,PH	HJ2205EC	0.17	0.014	40.95	35.7	4.4625	15750	16800	0.2
NUP2205ECP	ML,PH	-	0.17	-	40.95	35.7	4.4625	15750	16800	0.2
N305ECP	-	-	0.23	-	48.825	38.325	4.7775	12600	15750	0.12
NU305ECP	J,ML	HJ 305 EC	0.23	0.025	48.825	38.325	4.7775	12600	15750	0.15
NJ305ECP	J,ML	HJ 306 EC	0.24	0.025	48.825	38.325	4.7775	12600	15750	0.15
NUP305ECP	J,ML	-	0.25	-	48.825	38.325	4.7775	12600	15750	0.15

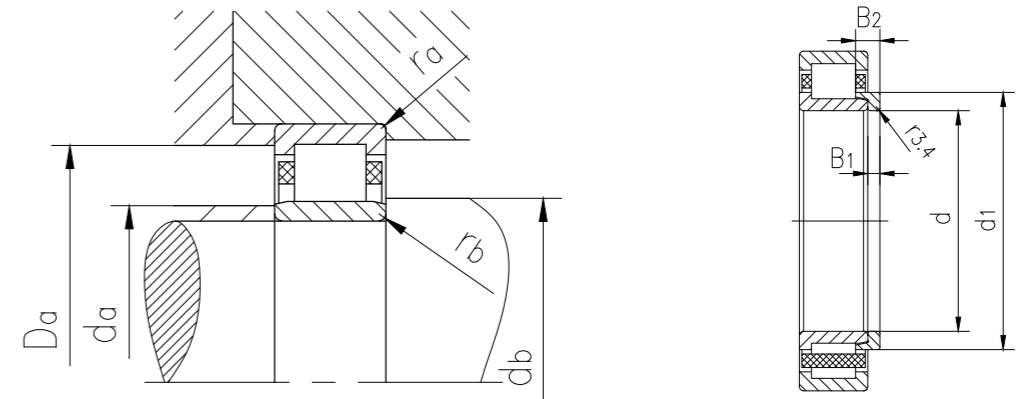
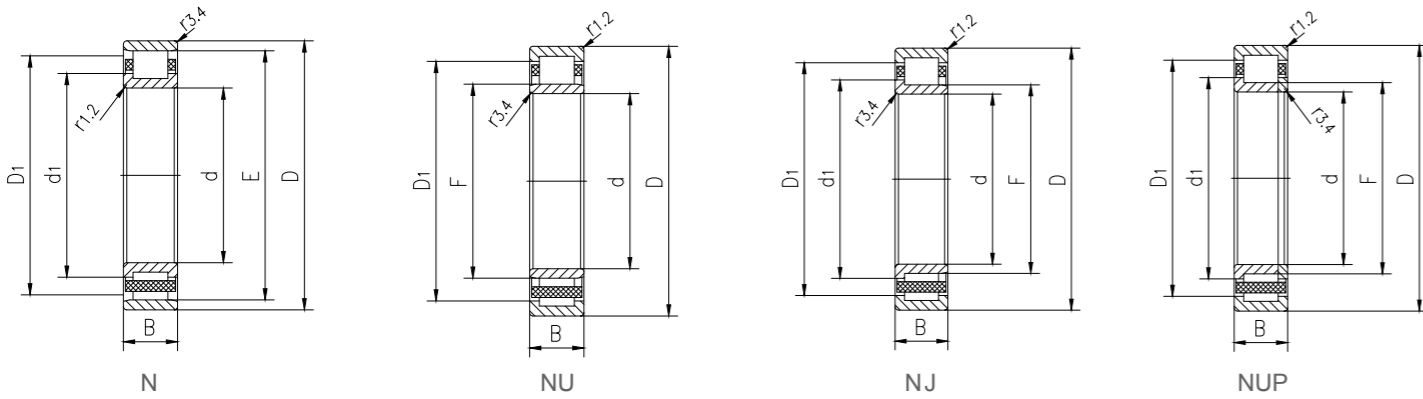
Single row cylindrical roller bearings



Type			Main dimensions			Dimensions								Shoulder and chamfer dimensions					
Bearings with standard cage	Optional Standard Cage	Corner ring	d	D	B	d ₁	D ₁	F, E	r _{1.2} min.	r _{3.4} min.	s max.	B ₁	B ₂	d _a min.	d _a max.	d _b min.	D _a max.	r _a max.	r _b max.
			mm			mm								mm					
NU2305ECP	J,ML	HJ 2305 EC	25	62	24	-	50.15	34	1.1	1.1	2.3	4	8	31	32.5	36	54.9	1	1
NJ2305ECP	J,ML	HJ 2306 EC	25	62	24	38.1	50.15	34	1.1	1.1	2.3	4	8	31	32.5	40	54.9	1	-
NUP2305ECP	J,ML	-	25	62	24	38.1	50.15	34	1.1	1.1	-	-	-	31	-	40	54.9	1	-
NU1006-	-	-	30	55	13	-	45.56	36.5	1	0.6	1.6	-	-	32.9	35.6	38	49.8	1	0.6
N206ECP	-	-	30	62	16	41.2	-	55.5	1	0.6	1.3	-	-	35.3	54	57	58.1	1	0.6
NU206ECP	J,ML,PH	HJ 206 EC	30	62	16	-	51.95	37.5	1	0.6	1.3	4	7	34.3	36.1	39	55.9	1	0.6
NJ206ECP	J,ML,PH	HJ 207 EC	30	62	16	41.2	51.95	37.5	1	0.6	1.3	4	7	35.3	36.1	43	55.9	1	-
NUP206ECP	J,ML,PH	-	30	62	16	41.2	51.95	37.5	1	0.6	-	-	-	35.3	-	43	55.9	1	-
NJ2206ECP	J,ML,PH	-	30	62	20	41.2	51.95	37.5	1	0.6	1.8	-	-	35.3	36.1	43	55.9	1	-
NU2206ECP	J,ML,PH	-	30	62	20	-	51.95	37.5	1	0.6	1.8	-	-	34.3	36.1	39	55.9	1	0.6
NUP2206ECP	J,ML,PH	-	30	62	20	41.2	51.95	37.5	1	0.6	-	-	-	35.3	-	43	55.9	1	-
N306ECP	-	-	30	72	19	45	-	62.5	1.1	1.1	1.4	-	-	37	61	64	65.5	1	1
NU306ECP	J,M,ML	HJ 306 EC	30	72	19	-	58.35	40.5	1.1	1.1	1.4	5	8.5	37	39	43	65.1	1	1
NJ306ECP	J,M,ML	HJ 307 EC	30	72	19	45	58.35	40.5	1.1	1.1	1.4	5	8.5	37	39	47	65.1	1	-
NUP306ECP	J,M,ML	-	30	72	19	45	58.35	40.5	1.1	1.1	-	-	-	37	-	47	65.1	1	-
NU2306ECP	ML,PH	-	30	72	27	-	58.35	40.5	1.1	1.1	2.4	-	-	37	39	43	65.1	1	1
NJ2306ECP	ML,PH	-	30	72	27	45	58.35	40.5	1.1	1.1	2.4	-	-	37	39	47	65.1	1	-
NUP2306ECP	ML,PH	-	30	72	27	45	58.35	40.5	1.1	1.1	-	-	-	37	-	47	65.1	1	-
NU406MA	-	HJ 406	30	90	23	-	66.1	45	1.5	1.5	1.6	7	12	41	43	47	81	1.5	1.5
NJ406MA	-	HJ 406	30	90	23	50.5	66.1	45	1.5	1.5	1.6	7	12	41	43	53	81	1.5	-
NU1007ECP	PH	-	35	62	14	-	53.95	42	1	0.6	1	-	-	38	41	44	56.5	1	0.6
NU207ECP	J,M,ML,PH,PHA	HJ 207 EC	35	72	17	-	60.2	44	1.1	0.6	1.3	4	7	39.8	42.2	46	65.1	1	0.6
N207ECP	-	-	35	72	17	48.1	-	64	1.1	0.6	1.3	-	-	41.8	62	66	67.2	1	0.6
NJ207ECP	J,M,ML,PH,PHA	HJ 207 EC	35	72	17	48.1	60.2	44	1.1	0.6	1.3	4	7	41.8	42.2	50	65.1	1	-
NUP207ECP	J,M,ML,PH,PHA	-	35	72	17	48.1	60.2	44	1.1	0.6	-	-	-	41.8	-	50	65.1	1	-
NU2207ECP	J,ML,PH	-	35	72	23	-	60.2	44	1.1	0.6	2.8	-	-	39.8	42.2	46	65.1	1	0.6
NJ2207ECP	J,ML,PH	-	35	72	23	48.1	60.2	44	1.1	0.6	2.8	-	-	41.8	42.2	50	65.1	1	-
NUP2207ECP	J,ML,PH	-	35	72	23	48.1	60.2	44	1.1	0.6	-	-	-	42	-	50	65.1	1	-
NU307ECP	J,M,ML,PH	HJ 307 EC	35	80	21	-	65.8	46.2	1.5	1.1	1.2	6	9.5	42	44	48	72.2	1.5	1
N307ECP	-	-	35	80	21	51	-	70.2	1.5	1.1	1.2	-	-	43	68	72	73.4	1.5	1
NJ307ECP	J,M,ML,PH	HJ 307 EC	35	80	21	51	65.8	46.2	1.5	1.1	1.2	6	9.5	43	44	53	72.2	1.5	-
NUP307ECP	J,M,ML,PH	-	35	80	21	51	65.8	46.2	1.5	1.1	-	-	-	44	-	53	72.2	1.5	-
NU2307ECP	PH	-	35	80	31	-	65.8	46.2	1.5	1.1	2.7	-	-	42	44	48	72.2	1.5	1
NJ2307ECP	PH	-	35	80	31	51	65.8	46.2	1.5	1.1	2.7	-	-	43	44	53	72.2	1.5	-
NUP2307ECP	PH	-	35	80	31	51	65.8	46.2	1.5	1.1	-	-	-	43	-	53	72.2	1.5	-
NJ407	-	-	35	100	25	59	77.15	53	1.5	1.5	1.7	-	-	48	51	61	90	1.5	-
NU407	-	-	35	100	25	-	77.15	53	1.5	1.5	1.7	-	-	48	51	55	90	1.5	1.5

Type			Weight	Weight of corner ring	Basic load rating		Fatigue load limit P _u	Rated speed reference speed	Maximum speed	Calculate the coefficient k _r
Bearings with standard cage	Optional Standard Cage	Corner ring			Dynamic C	Static C ₀				
			-			kg	kg	kN		r/min
NU2305ECP	J,ML	HJ 2305 EC	0.34	0.023	67.2	57.75	7.2975	12600	15750	0.25
NJ2305ECP	J,ML	HJ 2306 EC	0.35	0.023	67.2	57.75	7.2975	12600	15750	0.25
NUP2305ECP	J,ML	-	0.36	-	67.2	57.75	7.2975	12600	15750	0.25
NU1006-	-	-	0.11	-	18.795	18.165	1.953	15750	15750	0.1
N206ECP	-	-	0.2	-	46.2	38.325	4.725	13650	14700	0.12
NU206ECP	J,ML,PH	HJ 206 EC	0.2	0.025	46.2	38.325	4.725	13650	14700	0.15
NJ206ECP	J,ML,PH	HJ 207 EC	0.21	0.025	46.2	38.325	4.7775	13650	14700	0.15
NUP206ECP	J,ML,PH	-	0.21	-	46.2	38.325	4.7775	13650	14700	0.15
NJ2206ECP	J,ML,PH	-	0.26	-	57.75	51.45	6.405	13650	14700	0.2
NU2206ECP	J,ML,PH	-	0.26	-	57.75	51.45	6.405	13650	14700	0.2
NUP2206ECP	J,ML,PH	-	0.27	-	57.75	51.45	6.405	13650	14700	0.2
N306ECP	-	-	0.36	-	61.425	50.4	6.51	11550	12600	0.12
NU306ECP	J,M,ML	HJ 306 EC	0.36	0.042	61.425	50.4	6.51	11550	12600	0.15
NJ306ECP	J,M,ML	HJ 307 EC	0.37	0.042	61.425	50.4	6.51	11550	12600	0.15
NUP306ECP	J,M,ML	-	0.38	-	61.425	50.4	6.51	11550	12600	0.15
NU2306ECP	ML,PH	-	0.53	-	87.15	78.75	10.1325	11550	12600	0.25
NJ2306ECP	ML,PH	-	0.54	-	87.15	78.75	10.1325	11550	12600	0.25
NUP2306ECP	ML,PH	-	0.54	-	87.15	78.75	10.1325	11550	12600	0.25
NU406MA	-	HJ 406	0.75	0.08	63.525	55.65	7.14	9450	11550	0.15
NJ406MA	-	HJ 406	0.78	0.08	63.525	55.65	7.14	9450	11550	0.15
NU1007ECP	PH	-	0.16	-	37.59	39.9	4.7775	13650	13650	0.1
NU207ECP	M,ML,PH,PH	HJ 207 EC	0.29	0.033	58.8	50.4	6.405	11550	12600	0.15
N207ECP	-	-	0.3	-	58.8	50.4	6.405	11550	12600	0.12
NJ207ECP	M,ML,PH,PH	HJ 207 EC	0.3	0.033	58.8	50.4	6.405	11550	12600	0.15
NUP207ECP	M,ML,PH,PH	-	0.31	-	58.8	50.4	6.405	11550	12600	0.15
NU2207ECP	J,ML,PH	-	0.4	-	72.975	66.15	8.5575	11550	12600	0.2
NJ2207ECP	J,ML,PH	-	0.41	-	72.975	66.15	8.5575	11550	12600	0.2
NUP2207ECP	J,ML,PH	-	0.42	-	72.975	66.15	8.5575	11550	12600	0.2
NU307ECP	J,M,ML,PH	HJ 307 EC	0.47	0.058	78.75	66.15	8.5575	9975	11550	0.15
N307ECP	-	-	0.48	-	78.75	66.15	8.5575	9975	11550	0.12
NJ307ECP	J,M,ML,PH	HJ 307 EC	0.49	0.058	78.75	66.15	8.5575	9975	11550	0.15
NUP307ECP	J,M,ML,PH	-	0.49	-	78.75	66.15	8.5575	9975	11550	0.15
NU2307ECP	PH	-	0.72	-	111.3	102.9	13.335	9975	11550	0.25
NJ2307ECP	PH	-	0.73	-	111.3	102.9	13.335	9975	11550	0.25
NUP2307ECP	PH	-	0.76	-	111.3	102.9	13.335	9975	11550	0.25
NJ407	-	-	1	-	80.325	72.975	9.45	8400	9975	0.15
NU407	-	-	1	-	80.325	72.975	9.45	8400	9975	0.15

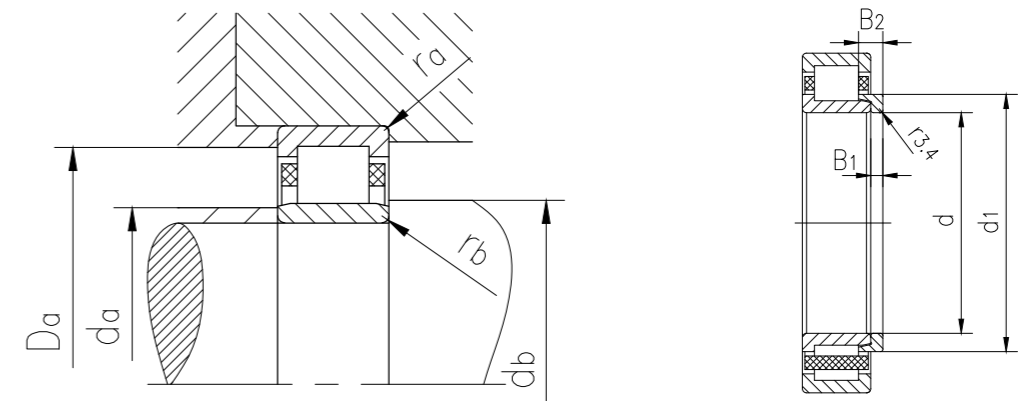
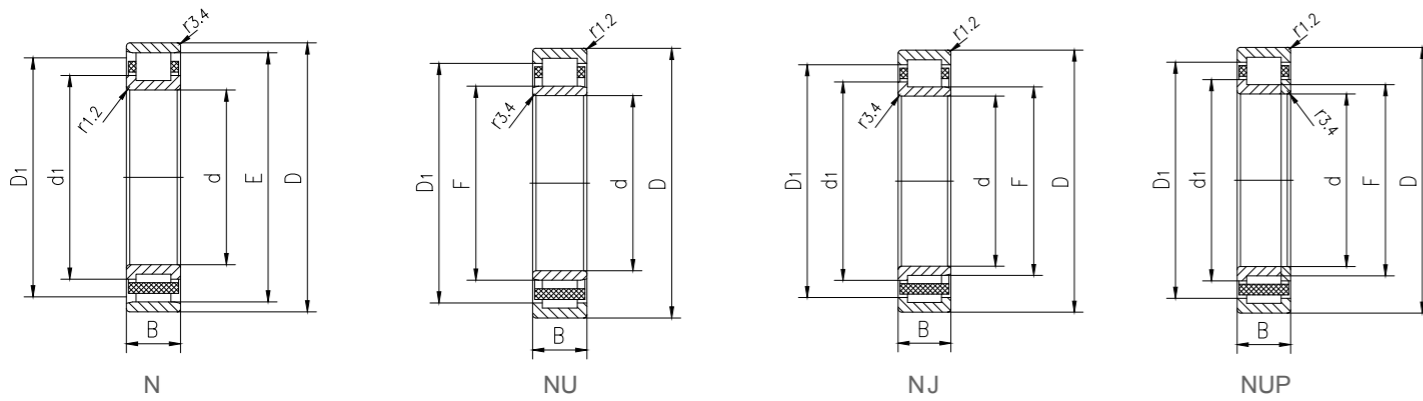
Single row cylindrical roller bearings



Type			Main dimensions			Dimensions							Shoulder and chamfer dimensions						
Bearings with standard cage	Optional Standard Cage	Corner ring	d	D	B	d ₁	D ₁	F, E	r _{1.2} min.	r _{3.4} min.	s max.	B ₁	B ₂	d _a min.	d _a max.	d _b , D _a min.	D _a max.	r _a max.	r _b max.
			mm			mm							mm						
NU1008ML	-	-	40	68	15	-	57.6	47	1	0.6	2.4	-	-	43	46	49	62.3	1	0.6
N208ECP	PH	-	40	80	18	54	-	71.5	1.1	1.1	1.4	-	-	47	69	73	74.1	1	1
NU208ECP	J,M,ML,PH	HJ 208 EC	40	80	18	-	67.4	49.5	1.1	1.1	1.4	5	8.5	47	48	51	72.8	1	1
NJ208ECP	J,M,ML,PH	HJ 209 EC	40	80	18	54	67.4	49.5	1.1	1.1	1.4	5	8.5	47	48	56	72.8	1	-
NUP208ECP	J,M,ML,PH	-	40	80	18	54	67.4	49.5	1.1	1.1	-	-	-	47	-	56	72.8	1	-
NU2208ECP	J,ML,PH	HJ 2208 EC	40	80	23	-	67.4	49.5	1.1	1.1	1.9	5	9	47	48	51	72.8	1	1
NJ2208ECP	J,ML,PH	HJ 2208 EC	40	80	23	54	67.4	49.5	1.1	1.1	1.9	5	9	47	48	56	72.8	1	-
NUP2208ECP	J,ML,PH	-	40	80	23	54	67.4	49.5	1.1	1.1	-	-	-	47	-	56	72.8	1	-
N308ECP	M	-	40	90	23	57.5	-	80	1.5	1.5	1.4	-	-	48	78	82	83.2	1.5	1.5
NU308ECP	J,M,ML,PH	HJ 308 EC	40	90	23	-	75	52	1.5	1.5	1.4	7	11	48	50	54	81.8	1.5	1.5
NJ308ECP	J,M,ML,PH	HJ 308 EC	40	90	23	57.5	75	52	1.5	1.5	1.4	7	11	48	50	60	81.8	1.5	-
NUP308ECP	J,M,ML,PH	-	40	90	23	57.5	75	52	1.5	1.5	-	-	-	48	-	60	81.8	1.5	-
NU2308ECP	J,M,ML,PH	-	40	90	33	-	75	52	1.5	1.5	2.9	-	-	48	50	54	81.8	1.5	1.5
NJ2308ECP	J,M,ML,PH	-	40	90	33	57.5	75	52	1.5	1.5	2.9	-	-	48	50	60	81.8	1.5	-
NUP2308ECP	J,M,ML,PH	-	40	90	33	57.5	75	52	1.5	1.5	-	-	-	48	-	60	81.8	1.5	-
NJ408	M,MA	-	40	110	27	64.8	85.3	58	2	2	2.5	-	-	52	56	67	99	2	2
NU408	M,MA	-	40	110	27	-	85.3	58	2	2	2.5	-	-	52	56	60	99	2	2
NU1009ECP	-	-	45	75	16	-	65.3	52.5	1	0.6	0.9	-	-	48.4	51	54	69.8	1	0.6
NJ1009ECP	PH	-	45	75	16	56	65.3	52.5	1	0.6	0.9	-	-	48.4	51	57.5	69.8	1	-
NU209ECP	J,M,ML	HJ 209 EC	45	85	19	-	72.4	54.5	1.1	1.1	1.2	5	8.5	52	53	56	77.6	1	1
N209ECP	M	-	45	85	19	59	-	76.5	1.1	1.1	1.2	-	-	52	74	78	79.1	1	1
NJ209ECP	J,M,ML	HJ 209 EC	45	85	19	59	72.4	54.5	1.1	1.1	1.2	5	8.5	52	53	61	77.6	1	-
NUP209ECP	J,M,ML	-	45	85	19	59	72.4	54.5	1.1	1.1	-	-	-	52	-	61	77.6	1	-
NU2209ECP	J,PH	-	45	85	23	-	72.4	54.5	1.1	1.1	1.7	-	-	52	53	56	77.6	1	1
NJ2209ECP	J,PH	-	45	85	23	59	72.4	54.5	1.1	1.1	1.7	-	-	52	53	61	77.6	1	-
NUP2209ECP	J,PH	-	45	85	23	59	72.4	54.5	1.1	1.1	-	-	-	52	-	61	77.6	1	-
N309ECP	-	-	45	100	25	64.4	-	88.5	1.5	1.5	1.7	-	-	54	86	91	92.3	1.5	1.5
NJ309ECP	J,M,ML,PH	HJ 309 EC	45	100	25	64.4	83.2	58.5	1.5	1.5	1.7	7	12	54	56	67	91.4	1.5	-
NU309ECP	J,M,ML,PH	HJ 310 EC	45	100	25	-	83.2	58.5	1.5	1.5	1.7	7	12	54	56	60	91.4	1.5	1.5
NUP309ECP	J,M,ML,PH	-	45	100	25	64.4	83.2	58.5	1.5	1.5	-	-	-	54	-	67	91.4	1.5	-
NU2309ECP	ML	-	45	100	36	-	83.2	58.5	1.5	1.5	3.2	-	-	54	56	60	91.4	1.5	1.5
NJ2309ECP	ML	-	45	100	36	64.4	83.2	58.5	1.5	1.5	3.2	-	-	54	56	67	91.4	1.5	-
NUP2309ECP	ML	-	45	100	36	64.4	83.2	58.5	1.5	1.5	-	-	-	54	-	67	91.4	1.5	-
NJ409	-	HJ 409	45	120	29	71.8	93.4	64.5	2	2	2.5	8	14	58	62	75	108	2	-
NU409	-	HJ 409	45	120	29	-	93.4	64.5	2	2	2.5	8	14	58	62	66	108	2	2
NU1010ECP	-	-	50	80	16	-	70.5	57.5	1	0.6	1	-	-	57	56	59	74.6	1	0.6
NU210ECP	J,M,ML,PH	HJ 210 EC	50	90	20	-	77.4	59.5	1.1	1.1	1.5	5	9	57	57.5	61	82.4	1	1

Type			Weight	Weight of corner ring	Basic load rating		Fatigue load limit P _u	Rated speed reference speed	Maximum speed	Calculate the coefficient k _r
Bearings with standard cage	Optional Standard Cage	Corner ring			Dynamic C	Static C ₀				
			-			kg	kg	kN		r/min
NU1008ML	-	-	0.23	-	26.355	27.3	3.15	12600	18900	0.15
N208ECP	PH	-	0.37	-	65.1	55.65	7.035	9975	11550	0.12
NU208ECP	J,M,ML,PH	HJ 208 EC	0.37	0.047	65.1	55.65	7.035	9975	11550	0.15
NJ208ECP	J,M,ML,PH	HJ 209 EC	0.38	0.047	65.1	55.65	7.035	9975	11550	0.15
NUP208ECP	J,M,ML,PH	-	0.39	-	65.1	55.65	7.035	9975	11550	0.15
NU2208ECP	J,ML,PH	HJ 2208 EC	0.49	0.048	85.575	78.75	10.1325	9975	11550	0.2
NJ2208ECP	J,ML,PH	HJ 2208 EC	0.5	0.048	85.575	78.75	10.1325	9975	11550	0.2
NUP2208ECP	J,ML,PH	-	0.51	-	85.575	78.75	10.1325	9975	11550	0.2
N308ECP	M	-	0.65	-	97.65	81.9	10.71	8400	9975	0.12
NU308ECP	J,M,ML,PH	HJ 308 EC	0.65	0.084	97.65	81.9	10.71	8400	9975	0.15
NJ308ECP	J,M,ML,PH	HJ 308 EC	0.67	0.084	97.65	81.9	10.71	8400	9975	0.15
NUP308ECP	J,M,ML,PH	-	0.68	-	97.65	81.9	10.71	8400	9975	0.15
NU2308ECP	J,M,ML,PH	-	0.93	-	135.45	126	16.065	8400	9975	0.25
NJ2308ECP	J,M,ML,PH	-	0.95	-	135.45	126	16.065	8400	9975	0.25
NUP2308ECP	J,M,ML,PH	-	0.98	-	135.45	126	16.065	8400	9975	0.25
NJ408	M,MA	-	1.3	-	101.64	94.5	12.18	7350	8925	0.15
NU408	M,MA	-	1.3	-	101.64	94.5	12.18	7350	8925	0.15
NU1009ECP	-	-	0.25	-	46.83	54.6	6.615	11550	11550	0.1
NJ1009ECP	PH	-	0.26	-	46.83	54.6	6.615	11550	11550	0.1
NU209ECP	J,M,ML	HJ 209 EC	0.42	0.052	72.975	67.2	8.5575	9450	9975	0.15
N209ECP	M	-	0.43	-	72.975	67.2	8.5575	9450	9975	0.12
NJ209ECP	J,M,ML	HJ 209 EC	0.44	0.052	72.975	67.2	8.5575	9450	9975	0.15
NUP209ECP	J,M,ML	-	0.44	-	72.975	67.2	8.5575	9450	9975	0.15
NU2209ECP	J,PH	-	0.52	-	89.25	85.575	11.13	9450	9975	0.2
NJ2209ECP	J,PH	-	0.54	-	89.25	85.575	11.13	9450	9975	0.2
NUP2209ECP	J,PH	-	0.55	-	89.25	85.575	11.13	9450	9975	0.2
N309ECP	-	-	0.88	-	117.6	105	13.545	7875	8925	0.12
NJ309ECP	J,M,ML,PH	HJ 309 EC	0.89	0.11	117.6	105	13.545	7875	8925	0.15
NU309ECP	J,M,ML,PH	HJ 310 EC	0.9	0.11	117.6	105	13.545	7875	8925	0.15
NUP309ECP	J,M,ML,PH	-	0.93	-	117.6	105	13.545	7875	8925	0.15
NU2309ECP	ML	-	1.3	-	168	160.65	21	7875	8925	0.25
NJ2309ECP	ML	-	1.35	-	168	160.65	21	7875	8925	0.25
NUP2309ECP	ML	-	1.35	-	168	160.65	21	7875	8925	0.25
NJ409	-	HJ 409	1.65	0.18	111.3	107.1	14.07	7035	7875	0.15
NU409	-	HJ 409	1.65	0.18	111.3	107.1	14.07	7035	7875	0.15
NU1010ECP	-	-	0.27	-	49.14	58.8	7.035	9975	9975	0.1
NU210ECP	J,M,ML,PH	HJ 210 EC	0.47	0.058	77.175	72.975	9.24	8925	9450	0.15

Single row cylindrical roller bearings



Type			Main dimensions			Dimensions							Shoulder and chamfer dimensions						
Bearings with standard cage	Optional Standard Cage	Corner ring	d	D	B	d ₁	D ₁	F, E	r _{1.2} min.	r _{3.4} min.	s max.	B ₁	B ₂	d _a min.	d _a max.	d _b , D _a min.	D _a max.	r _a max.	r _b max.
			mm			mm							mm						
N210ECP	M	-	50	90	20	64	-	81.5	1.1	1.1	1.5	-	-	57	79	83	84	1	1
NJ210ECP	J,M,ML,PH	-	50	90	20	64	77.4	59.5	1.1	1.1	1.5	-	-	57	57.5	66	82.4	1	-
NUP210ECP	J,M,ML,PH	-	50	90	20	64	77.4	59.5	1.1	1.1	-	-	-	57	-	66	82.4	1	-
NU2210ECP	J,M,ML,PH	-	50	90	23	-	77.4	59.5	1.1	1.1	1.5	-	-	57	57.5	61	82.4	1	1
NJ2210ECP	J,M,ML,PH	-	50	90	23	64	77.4	59.5	1.1	1.1	1.5	-	-	57	57.5	66	82.4	1	-
NUP2210ECP	J,M,ML,PH	-	50	90	23	64	77.4	59.5	1.1	1.1	-	-	-	57	-	66	82.4	1	-
N310ECP	-	-	50	110	27	71.2	-	97	2	2	1.9	-	-	60	95	99	101	2	2
NU310ECP	J,M,ML,PH	HJ 310 EC	50	110	27	-	91.4	65	2	2	1.9	8	13	60	63	67	99.6	2	2
NJ310ECP	J,M,ML,PH	HJ 310 EC	50	110	27	71.2	91.4	65	2	2	1.9	8	13	60	63	73	99.6	2	-
NUP310ECP	J,M,ML,PH	-	50	110	27	71.2	91.4	65	2	2	-	-	-	60	-	73	99.6	2	-
NJ2310ECP	ML,PH	-	50	110	40	71.2	91.4	65	2	2	3.4	-	-	60	63	73	99.6	2	-
NU2310ECP	ML,PH	-	50	110	40	-	91.4	65	2	2	3.4	-	-	60	63	67	99.6	2	2
NUP2310ECP	ML,PH	-	50	110	40	71.2	91.4	65	2	2	-	-	-	60	-	73	99.6	2	-
NU410	-	HJ 410	50	130	31	-	101.6	70.8	2.1	2.1	2.6	9	15	64	68	73	116	2	2
NJ410	-	HJ 410	50	130	31	78.8	101.6	70.8	2.1	2.1	2.6	9	15	64	68	81	116	2	-
NU1011ECP	ML	-	55	90	18	-	79	64.5	1.1	1	0.5	-	-	59.7	63	66	83	1	1
NJ1011ECP	ML	-	55	90	18	68	79	64.5	1.1	1	0.5	-	-	60	63	70	83	2	-
N211ECP	-	-	55	100	21	70.8	-	90	1.5	1.1	1	-	-	63	88	92	93	1.5	1
NU211ECP	J,M,ML	HJ 211 EC	55	100	21	-	85.6	66	1.5	1.1	1	6	9.5	62	64	68	91.4	1.5	1
NJ211ECP	J,M,ML	HJ 211 EC	55	100	21	70.8	85.6	66	1.5	1.1	1	6	9.5	63	64	73	91.4	1.5	-
NUP211ECP	J,M,ML	-	55	100	21	70.8	85.6	66	1.5	1.1	-	-	-	63	-	73	91.4	1.5	-
NU2211ECP	J,M,ML,PH	HJ 2211 EC	55	100	25	-	85.6	66	1.5	1.1	1.5	6	10	62	64	68	91.4	1.5	1
NJ2211ECP	J,M,ML,PH	HJ 2211 EC	55	100	25	70.8	85.6	66	1.5	1.1	1.5	6	10	63	64	73	91.4	1	-
NUP2211ECP	J,M,ML,PH	-	55	100	25	70.8	85.6	66	1.5	1.1	-	-	-	63	-	73	91.4	1.5	-
N311ECP	M	-	55	120	29	77.5	-	106.5	2	2	2	-	-	65	104	109	111	2	2
NU311ECP	J,M,ML	HJ 311 EC	55	120	29	-	100.3	70.5	2	2	2	9	14	65	68	73	109.2	2	2
NJ311ECP	J,M,ML	HJ 311 EC	55	120	29	77.5	100.3	70.5	2	2	2	9	14	65	68	80	109.2	2	-
NUP311ECP	M,M,ML	-	55	120	29	77.5	100.3	70.5	2	2	-	-	-	65	-	80	109.2	2	-
NJ2311ECP	PHPH	HJ 2311 EC	55	120	43	77.5	100.3	70.5	2	2	3.5	9	16	65	68	80	109.2	2	-
NU2311ECP	PHPH	HJ 2311 EC	55	120	43	-	100.3	70.5	2	2	3.5	9	16	65	68	73	109.2	2	2
NUP2311ECP	PHPH	-	55	120	43	77.5	100.3	70.5	2	2	-	-	-	65	-	80	109.2	2	-
NU411	-	-	55	140	33	-	109.45	77.2	2.1	2.1	2.6	-	-	69	74	79	126	2	2
NJ411	-	-	55	140	33	85.2	109.45	77.2	2.1	2.1	2.6	-	-	69	74	88	126	2	-
NU1012ML	-	-	60	95	18	-	81.8	69.5	1.1	1	2.9	-	-	64.6	68	71	88	1	1
N212ECP	-	-	60	110	22	77.5	-	100	1.5	1.5	1.4	-	-	68	98	102	103	1.5	1.5
NU212ECP	M,M,ML	HJ 212 EC	60	110	22	-	95	72	1.5	1.5	1.4	6	10	68	70	74	101	1.5	1.5
NJ212ECP	M,M,ML	HJ 212 EC	60	110	22	77.5	95	72	1.5	1.5	1.4	6	10	68	70	80	101	1.5	-

Type			Weight	Weight of corner ring	Basic load rating		Fatigue load limit P _u	Rated speed reference speed	Maximum speed	Calculate the coefficient k _r
Bearings with standard cage	Optional Standard Cage	Corner ring			Dynamic C	Static C ₀				
			-			kg	kg	kN		r/min
N210ECP	M	-	0.48	-	77.175	72.975	9.24	8925	9450	0.12
NJ210ECP	J,M,ML,PH	-	0.49	-	77.175	72.975	9.24	8925	9450	0.15
NUP210ECP	J,M,ML,PH	-	0.5	-	77.175	72.975	9.24	8925	9450	0.15
NU2210ECP	J,M,ML,PH	-	0.56	-	94.5	92.4	11.97	8925	9450	0.2
NJ2210ECP	J,M,ML,PH	-	0.57	-	94.5	92.4	11.97	8925	9450	0.2
NUP2210ECP	J,M,ML,PH	-	0.59	-	94.5	92.4	11.97	8925	9450	0.2
N310ECP	-	-	1.1	-	133.35	117.6	15.75	7035	8400	0.12
NU310ECP	J,M,ML,PH	HJ 310 EC	1.1	0.15	133.35	117.6	15.75	7035	8400	0.15
NJ310ECP	J,M,ML,PH	HJ 310 EC	1.15	0.15	133.35	117.6	15.75	7035	8400	0.15
NUP310ECP	J,M,ML,PH	-	1.15	-	133.35	117.6	15.75	7035	8400	0.15
NJ2310ECP	ML,PH	-	1.75	-	195.3	195.3	25.725	7035	8400	0.25
NU2310ECP	ML,PH	-	1.75	-	195.3	195.3	25.725	7035	8400	0.25
NUP2310ECP	ML,PH	-	1.75	-	195.3	195.3	25.725	7035	8400	0.25
NU410	-	HJ 410	2	0.15	136.5	133.35	17.43	6300	7350	0.15
NJ410	-	HJ 410	2.05	0.15	136.5	133.35	17.43	6300	7350	0.15
NU1011ECP	ML	-	0.39	-	60.06	72.975	8.715	8925	8925	0.1
NJ1011ECP	ML	-	0.42	-	60.06	72.975	8.715	8925	8925	0.1
N211ECP	-	-	0.65	-	101.325	99.75	12.81	7875	8400	0.12
NU211ECP	J,M,ML	HJ 211 EC	0.66	0.083	101.325	99.75	12.81	7875	8400	0.15
NJ211ECP	J,M,ML	HJ 211 EC	0.67	0.083	101.325	99.75	12.81	7875	8400	0.15
NUP211ECP	J,M,ML	-	0.68	-	101.325	99.75	12.81	7875	8400	0.15
NU2211ECP	J,M,ML,PH	HJ 2211 EC	0.79	0.085	119.7	123.9	16.065	7875	8400	0.2
NJ2211ECP	J,M,ML,PH	HJ 2211 EC	0.81	0.085	119.7	123.9	16.065	7875	8400	0.2
NUP2211ECP	J,M,ML,PH	-	0.82	-	119.7	123.9	16.065	7875	8400	0.2
N311ECP	M	-	1.45	-	163.8	150.15	19.53	6300	7350	0.12
NU311ECP	J,M,ML	HJ 311 EC	1.45	0.19	163.8	150.15	19.53	6300	7350	0.15
NJ311ECP	J,M,ML	HJ 311 EC	1.5	0.19	163.8	150.15	19.53	6300	7350	0.15
NUP311ECP	M,M,ML	-	1.5	-	163.8	150.15	19.53	6300	7350	0.15
NJ2311ECP	PHPH	HJ 2311 EC	2.25	0.19	243.6	243.6	32.025	6300	7350	0.25
NU2311ECP	PHPH	HJ 2311 EC	2.25	0.19	243.6	243.6	32.025	6300	7350	0.25
NUP2311ECP	PHPH	-	2.3	-	243.6	243.6	32.025	6300	7350	0.25
NU411	-	-	2.5	-	149.1	147	19.53	5880	6615	0.15
NJ411	-	-	2.55	-	149.1	147	19.53	5880	6615	0.15
NU1012ML	-	-	0.5	-	39.27	46.2	5.565	8400	13650	0.15
N212ECP	-	-	0.79	-	113.4	107.1	14.07	7035	7875	0.12
NU212ECP	M,M,ML	HJ 212 EC	0.8	0.1	113.4	107.1	14.07	7035	7875	0.15
NJ212ECP	M,M,ML	HJ 212 EC	0.82	0.1	113.4	107.1	14.07	7035	7875	0.15