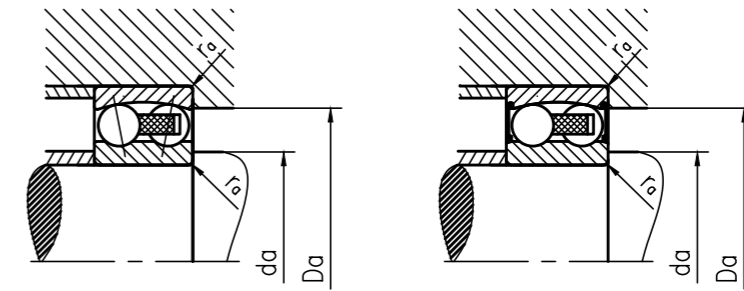
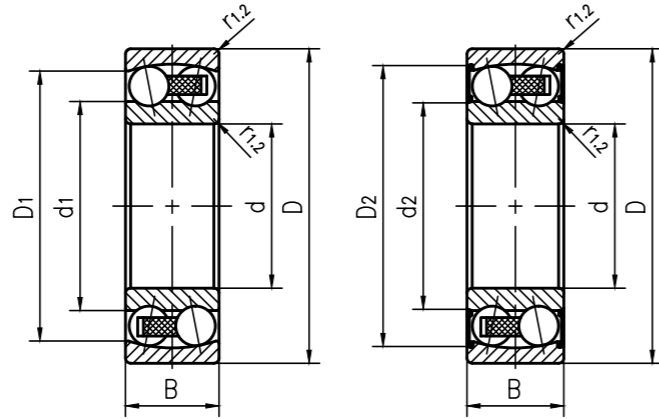


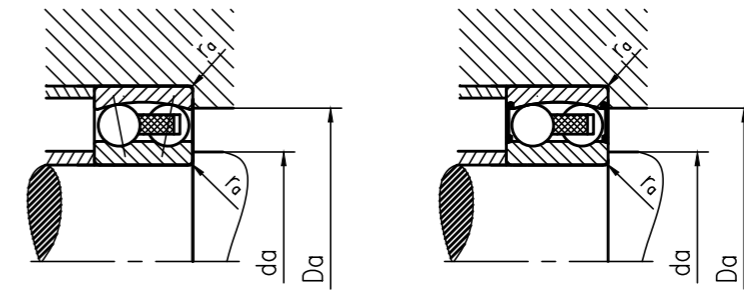
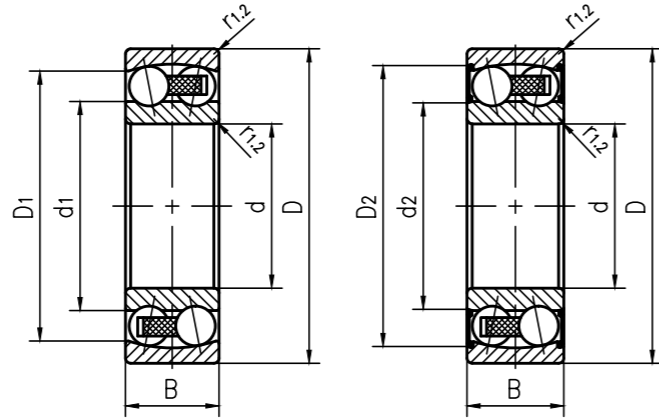
Self-aligning ball bearing



Type		Main dimensions			Dimensions						Shoulder and chamfer dimensions			
Bearing with cylindrical bore	Taper Hole	d	D	B	d ₁ , d ₂	D ₁ , D ₂	C ₁	b	K	r _{1,2}	d _a Min.	d _a Max.	D _a Max.	r _a Max.
		mm			mm						mm			
135 TN9	-	5	19	6	10.3	15.4	-	-	-	0.3	7.4	-	16.6	0.3
126 TN9	-	6	19	6	10.3	15.4	-	-	-	0.3	8.4	-	16.6	0.3
127 TN9	-	7	22	7	12.7	17.6	-	-	-	0.3	9.4	-	19.6	0.3
108 TN9	-	8	22	7	12.7	17.6	-	-	-	0.3	10.4	-	19.6	0.3
129 TN9	-	9	26	8	14.8	20.4	-	-	-	0.3	11.4	-	23.6	0.3
1200 ETN9	-	10	30	9	16.5	23.5	-	-	-	0.6	14.2	-	25.8	0.6
2200 E-2RS1TN9	-	10	30	14	14.6	24.8	-	-	-	0.6	14	14	25.8	0.6
2200 ETN9	-	10	30	14	15.3	24.3	-	-	-	0.6	14.2	-	25.8	0.6
1201 ETN9	-	12	32	10	18.2	25.7	-	-	-	0.6	16.2	-	27.8	0.6
2201 E-2RS1TN9	-	12	32	14	15.5	27.4	-	-	-	0.6	15.5	15.5	27.8	0.6
2201 ETN9	-	12	32	14	17.4	26.4	-	-	-	0.6	16.2	-	27.8	0.6
1301 ETN9	-	12	37	12	20.2	29.5	-	-	-	1	17.6	-	31.4	1
2301	-	12	37	17	18.9	29.1	-	-	-	1	17.6	-	31.4	1
1202 ETN9	-	15	35	11	21.1	28.9	-	-	-	0.6	19.2	-	30.8	0.6
2202 E-2RS1TN9	-	15	35	14	19	30.4	-	-	-	0.6	19	19	30.8	0.6
2202 ETN9	-	15	35	14	20.8	29.5	-	-	-	0.6	19.2	-	30.8	0.6
1302 ETN9	-	15	42	13	23.9	34.3	-	-	-	1	20.6	-	36.4	1
2302 E-2RS1TN9	-	15	42	17	20.3	36.3	-	-	-	1	20	20	36.4	1
2302	-	15	42	17	23.1	33.3	-	-	-	1	20.6	-	36.4	1
1203 ETN9	-	17	40	12	24	32.9	-	-	-	0.6	21.2	-	35.8	0.6
2203 E-2RS1TN9	-	17	40	16	21.1	35	-	-	-	0.6	21	21	35.8	0.6
2203 ETN9	-	17	40	16	23.8	33.4	-	-	-	0.6	21.2	-	35.8	0.6
1303 ETN9	-	17	47	14	28.8	40	-	-	-	1	22.6	-	41.4	1
2303 E-2RS1TN9	-	17	47	19	25.5	41.3	-	-	-	1	22	25.5	41.4	1
2303 M	-	17	47	19	26.1	37.2	-	-	-	1	22.6	-	41.4	1

Type		Weight	Basic load rating		Fatigue load limit	Rated speed reference speed	Maximum speed	Calculate the coefficient				
Bearing with cylindrical bore	Taper Hole		Dynamic	Static				K _t	e	Y ₁	Y ₂	Y ₀
			C	C ₀	P _u							
-		kg	kN		r/min		-					
135 TN9	-	0.009	2.64	0.5	0.03	66150	47250	0.045	0.33	1.9	3	2
126 TN9	-	0.009	2.64	0.5	0.03	73500	47250	0.04	0.33	1.9	3	2
127 TN9	-	0.014	2.78	0.59	0.03	66150	42000	0.04	0.33	1.9	3	2
108 TN9	-	0.014	2.78	0.59	0.03	63000	42000	0.03	0.33	1.9	3	2
129 TN9	-	0.022	4.1	0.86	0.05	63000	39900	0.04	0.33	1.9	3	2
1200 ETN9	-	0.034	5.81	1.24	0.06	58800	37800	0.04	0.33	1.9	3	2
2200 E-2RS1TN9	-	0.048	5.81	1.24	0.06	-	17850	0.045	0.33	1.9	3	2
2200 ETN9	-	0.047	8.46	1.82	0.09	52500	35700	0.045	0.54	1.15	1.8	1.3
1201 ETN9	-	0.04	6.55	1.5	0.08	52500	33600	0.04	0.33	1.9	3	2
2201 E-2RS1TN9	-	0.053	6.55	1.5	0.08	-	16800	0.045	0.33	1.9	3	2
2201 ETN9	-	0.053	8.95	2	0.1	47250	31500	0.045	0.5	1.25	2	1.3
1301 ETN9	-	0.067	9.83	2.27	0.13	42000	29400	0.04	0.35	1.8	2.8	1.8
2301	-	0.095	12.29	2.84	0.15	39900	29400	0.05	0.6	1.05	1.6	1.1
1202 ETN9	-	0.049	7.78	1.85	0.09	47250	29400	0.04	0.33	1.9	3	2
2202 E-2RS1TN9	-	0.058	7.78	1.85	0.09	-	14700	0.045	0.33	1.9	3	2
2202 ETN9	-	0.06	9.15	2.14	0.12	39900	27300	0.045	0.43	1.5	2.3	1.6
1302 ETN9	-	0.094	11.34	2.73	0.15	35700	25200	0.04	0.31	2	3.1	2.2
2302 E-2RS1TN9	-	0.11	11.34	2.73	0.15	-	12600	0.05	0.31	2	3.1	2.2
2302	-	0.12	12.5	3.05	0.16	33600	25200	0.05	0.52	1.2	1.9	1.3
1203 ETN9	-	0.073	9.28	2.31	0.13	39900	25200	0.04	0.31	2	3.1	2.2
2203 E-2RS1TN9	-	0.089	9.28	2.31	0.13	-	12600	0.045	0.31	2	3.1	2.2
2203 ETN9	-	0.088	11.13	2.68	0.15	35700	25200	0.045	0.43	1.5	2.3	1.6
1303 ETN9	-	0.12	13.34	3.57	0.19	29400	21000	0.04	0.3	2.1	3.3	2.2
2303 E-2RS1TN9	-	0.16	13.34	3.57	0.19	-	11550	0.05	0.3	2.1	3.3	2.2
2303 M	-	0.18	15.02	3.73	0.2	31500	23100	0.05	0.52	1.2	1.9	1.3

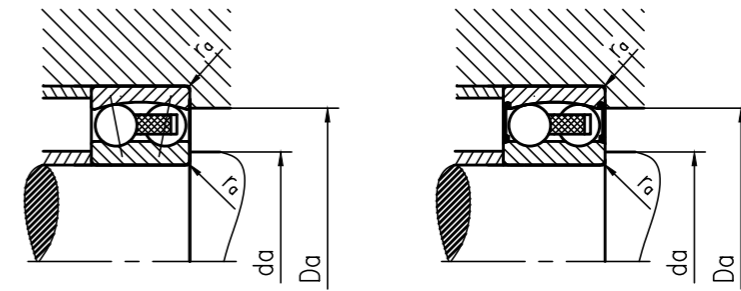
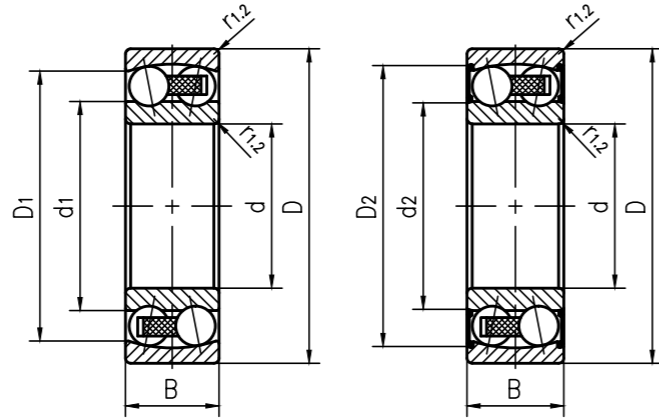
Self-aligning ball bearing



Type		Main dimensions			Dimensions						Shoulder and chamfer dimensions			
Bearing with cylindrical bore	Taper Hole	d	D	B	d ₁ , d ₂	D ₁ , D ₂	C ₁	b	K	r _{1,2}	d _a Min.	d _a Max.	D _a Max.	r _a Max.
		mm			mm						mm			
1204 ETN9	1204 EKTN9	20	47	14	28.8	40	-	-	-	1	25.6	-	41.4	1
2204 E-2RS1TN9	-	20	47	18	25.9	41.3	-	-	-	1	25	25.5	41.4	1
2204 ETN9	-	20	47	18	27.3	40	-	-	-	1	25.6	-	41.4	1
1304 ETN9	-	20	52	15	33.3	44.6	-	-	-	1	27	-	45	1
2304 E-2RS1TN9	-	20	52	21	28.6	46.3	-	-	-	1.1	26.5	28.5	45	1.1
2304 TN9	-	20	52	21	29.1	41.9	-	-	-	1.1	27	-	45	1.1
1205ETN9	1205EKTN9	25	52	15	33.3	44.6	-	-	-	1	30.6	-	46.4	1
2205E-2RS1TN9	2205E-2RS1KTN9	25	52	18	31	46.3	-	-	-	1	30.6	31	46.4	1
2205ETN9	2205EKTN9	25	52	18	32.2	45.1	-	-	-	1	30.6	-	46.4	1
1305ETN9	1305EKTN9	25	62	17	38	50.7	-	-	-	1.1	32	-	55	1.1
2305E-2RS1TN9	2305E-2RS1KTN9	25	62	24	32.8	52.7	-	-	-	1.1	32	32.5	55	1.1
2305ETN9	2305EKTN9	25	62	24	35.5	52.3	-	-	-	1.1	32	-	55	1.1
1206ETN9	1206EKTN9	30	62	16	40.3	51.9	-	-	-	1	35.6	-	56.4	1
2206E-2RS1TN9	2206E-2RS1KTN9	30	62	20	36.7	54.1	-	-	-	1	35.6	36.5	56.4	1
2206ETN9	2206EKTN9	30	62	20	38.7	54	-	-	-	1	35.6	-	56.4	1
1306ETN9	1306EKTN9	30	72	19	45.1	59.1	-	-	-	1.1	37	-	65	1.1
2306E-2RS1TN9	2306E-2RS1KTN9	30	72	27	40.4	61.9	-	-	-	1.1	37	40	65	1.1
2306	2306K	30	72	27	41.9	59.8	-	-	-	1.1	37	-	65	1.1
1207ETN9	1207EKTN9	35	72	17	47	60.9	-	-	-	1.1	42	-	65	1.1
2207E-2RS1TN9	2207E-2RS1KTN9	35	72	23	42.7	62.7	-	-	-	1.1	42	42.5	65	1.1
2207ETN9	2207EKTN9	35	72	23	45.3	62.9	-	-	-	1.1	42	-	65	1.1
1307ETN9	1307EKTN9	35	80	21	51.5	67.5	-	-	-	1.5	44	-	71	1.5
2307E-2RS1TN9	2307E-2RS1KTN9	35	80	31	43.7	69.2	-	-	-	1.5	43.5	43.5	71	1.5
2307ETN9	2307EKTN9	35	80	31	46.7	67	-	-	-	1.5	44	-	71	1.5
1208ETN9	1208EKTN9	40	80	18	53.8	67.5	-	-	-	1.1	47	-	73	1.1

Type		Weight	Basic load rating		Fatigue load limit	Rated speed reference speed	Maximum speed	Calculate the coefficient				
Bearing with cylindrical bore	Taper Hole		Dynamic	Static				P _u	K _t	e	Y ₁	Y ₂
			C	C ₀	-							
1204 ETN9	1204 EKTN9	0.12	13.34	3.57	0.19	33600	21000	0.04	0.3	2.1	3.3	2.2
2204 E-2RS1TN9	-	0.14	13.34	3.57	0.19	-	10500	0.045	0.3	2.1	3.3	2.2
2204 ETN9	-	0.14	17.64	4.36	0.23	29400	21000	0.045	0.4	1.6	2.4	1.6
1304 ETN9	-	0.16	15.02	4.2	0.22	27300	18900	0.04	0.28	2.2	3.5	2.5
2304 E-2RS1TN9	-	0.21	15.02	4.2	0.22	-	9450	0.05	0.28	2.2	3.5	2.5
2304 TN9	-	0.22	19.11	4.99	0.25	27300	19950	0.05	0.52	1.2	1.9	1.3
1205ETN9	1205EKTN9	0.14	15.02	4.2	0.22	29400	18900	0.04	0.28	2.2	3.5	2.5
2205E-2RS1TN9	2205E-2RS1KTN9	0.16	15.02	4.2	0.22	-	9450	0.045	0.28	2.2	3.5	2.5
2205ETN9	2205EKTN9	0.16	17.64	4.62	0.24	27300	18900	0.045	0.35	1.8	2.8	1.8
1305ETN9	1305EKTN9	0.26	19.95	5.67	0.29	23100	15750	0.04	0.28	2.2	3.5	2.5
2305E-2RS1TN9	2305E-2RS1KTN9	0.34	19.95	5.67	0.29	-	7875	0.05	0.28	2.2	3.5	2.5
2305ETN9	2305EKTN9	0.34	28.35	7.46	0.39	23100	16800	0.05	0.44	1.4	2.2	1.4
1206ETN9	1206EKTN9	0.22	16.38	4.88	0.25	25200	15750	0.04	0.25	2.5	3.9	2.5
2206E-2RS1TN9	2206E-2RS1KTN9	0.26	16.38	4.88	0.25	-	7875	0.045	0.25	2.5	3.9	2.5
2206ETN9	2206EKTN9	0.26	24.99	7.04	0.37	23100	15750	0.045	0.33	1.9	3	2
1306ETN9	1306EKTN9	0.39	23.63	7.14	0.38	19950	13650	0.04	0.25	2.5	3.9	2.5
2306E-2RS1TN9	2306E-2RS1KTN9	0.51	23.63	7.14	0.38	-	7035	0.05	0.25	2.5	3.9	2.5
2306	2306K	0.5	32.76	9.24	0.47	18900	13650	0.05	0.44	1.4	2.2	1.4
1207ETN9	1207EKTN9	0.32	19.95	6.3	0.33	21000	13650	0.04	0.23	2.7	4.2	2.8
2207E-2RS1TN9	2207E-2RS1KTN9	0.41	19.95	6.3	0.33	-	6615	0.045	0.23	2.7	4.2	2.8
2207ETN9	2207EKTN9	0.4	31.71	9.24	0.48	18900	12600	0.045	0.31	2	3.1	2.2
1307ETN9	1307EKTN9	0.51	27.83	8.93	0.45	16800	11550	0.04	0.25	2.5	3.9	2.5
2307E-2RS1TN9	2307E-2RS1KTN9	0.7	27.83	8.93	0.45	-	5880	0.05	0.25	2.5	3.9	2.5
2307ETN9	2307EKTN9	0.68	41.69	11.76	0.62	16800	12600	0.05	0.46	1.35	2.1	1.4
1208ETN9	1208EKTN9	0.42	20.9	7.3	0.38	18900	11550	0.04	0.22	2.9	4.5	2.8

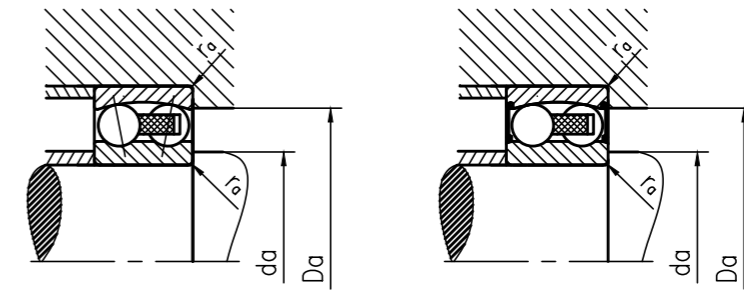
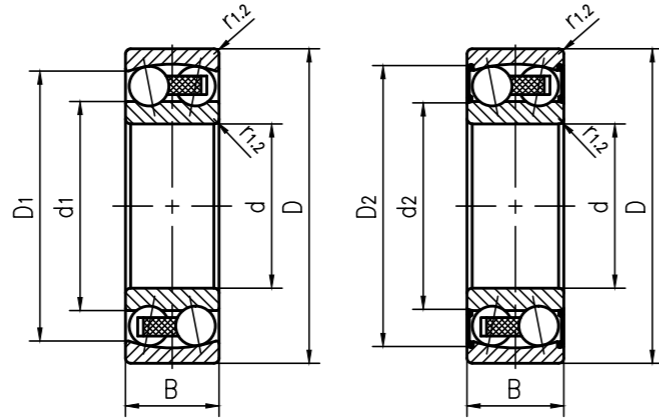
Self-aligning ball bearing



Type		Main dimensions			Dimensions						Shoulder and chamfer dimensions			
Bearing with cylindrical bore	Taper Hole	d	D	B	d ₁ , d ₂	D ₁ , D ₂	C ₁	b	K	r _{1.2}	d _a Min.	d _a Max.	D _a Max.	r _a Max.
		mm			mm						mm			
2208E-2RS1TN9	2208E-2RS1KTN9	40	80	23	49	69.8	-	-	-	1.1	47	49	73	1.1
2208ETN9	2208EKTN9	40	80	23	52.3	70.2	-	-	-	1.1	47	-	73	1.1
1308ETN9	1308EKTN9	40	90	23	61.4	80.2	-	-	-	1.1	49	-	81	1.1
2308E-2RS1TN9	2308E-2RS1KTN9	40	90	33	55.4	81.8	-	-	-	1.5	49	55	81	1.5
2308ETN9	2308EKTN9	40	90	33	53.7	77.8	-	-	-	1.5	49	-	81	1.5
1209ETN9	1209EKTN9	45	85	19	57.5	72.5	-	-	-	1.1	52	-	78	1.1
2209E-2RS1TN9	2209E-2RS1KTN9	45	85	23	52.9	75.3	-	-	-	1.1	52	53	78	1.1
2209ETN9	2209EKTN9	45	85	23	55.3	73.2	-	-	-	1.1	52	-	78	1.1
1309ETN9	1309EKTN9	45	100	25	67.7	87.8	-	-	-	1.5	54	-	91	1.5
2309E-2RS1TN9	2309E-2RS1KTN9	45	100	36	60.9	90	-	-	-	1.5	54	60.5	91	1.5
2309ETN9	2309EKTN9	45	100	36	60.1	86	-	-	-	1.5	54	-	91	1.5
1210ETN9	1210EKTN9	50	90	20	61.7	78.1	-	-	-	1.1	57	-	83	1.1
2210E-2RS1TN9	2210E-2RS1KTN9	50	90	23	57.7	79.4	-	-	-	1.1	57	58	83	1.1
2210ETN9	2210EKTN9	50	90	23	61.4	80.2	-	-	-	1.1	57	-	83	1.1
1310ETN9	1310EKTN9	50	110	27	70.3	92.6	-	-	-	2	61	-	99	2
2310E-2RS1TN9	2310E-2RS1KTN9	50	110	40	62.9	95.2	-	-	-	2	61	62.5	99	2
2310	2310K	50	110	40	66	92.5	-	-	-	2	61	-	99	2
1211ETN9	1211EKTN9	55	100	21	70.3	86.5	-	-	-	1.5	64	-	91	1.5
2211E-2RS1TN9	2211E-2RS1KTN9	55	100	25	65.9	88.5	-	-	-	1.5	64	65.5	91	1.5
2211ETN9	2211EKTN9	55	100	25	67.7	87.8	-	-	-	1.5	64	-	91	1.5
1311ETN9	1311EKTN9	55	120	29	77.9	102	-	-	-	2	66	-	109	2
2311	2311K	55	120	43	72	101	-	-	-	2	66	-	109	2
1212ETN9	1212EKTN9	60	110	22	78	95.6	-	-	-	1.5	69	-	101	1.5
2212E-2RS1TN9	2212E-2RS1KTN9	60	110	28	73.2	97	-	-	-	1.5	69	73	101	1.5
2212ETN9	2212EKTN9	60	110	28	74.4	96.9	-	-	-	1.5	69	-	101	1.5

Type		Weight	Basic load rating		Fatigue load limit	Rated speed reference speed	Maximum speed	Calculate the coefficient				
Bearing with cylindrical bore	Taper Hole		Dynamic	Static				K _r	e	Y ₁	Y ₂	Y ₀
			C	C ₀	P _u							
-		kg	kN			r/min	-					
2208E-2RS1TN9	2208E-2RS1KTN9	0.5	20.9	7.3	0.38	-	5880	0.045	0.22	2.9	4.5	2.8
2208ETN9	2208EKTN9	0.51	33.5	10.5	0.54	16800	11550	0.045	0.28	2.2	3.5	2.5
1308ETN9	1308EKTN9	0.68	35.49	11.76	0.6	14700	9975	0.04	0.23	2.7	4.2	2.8
2308E-2RS1TN9	2308E-2RS1KTN9	0.96	35.49	11.76	0.6	-	5250	0.05	0.23	2.7	4.2	2.8
2308ETN9	2308EKTN9	0.93	56.7	16.8	0.86	14700	10500	0.05	0.4	1.6	2.4	1.6
1209ETN9	1209EKTN9	0.47	24.05	8.19	0.42	17850	11550	0.04	0.21	3	4.6	3.2
2209E-2RS1TN9	2209E-2RS1KTN9	0.53	24.05	8.19	0.42	-	5565	0.045	0.21	3	4.6	3.2
2209ETN9	2209EKTN9	0.55	34.13	11.13	0.57	15750	10500	0.045	0.26	2.4	3.7	2.5
1309ETN9	1309EKTN9	0.96	40.95	14.07	0.74	12600	8925	0.04	0.23	2.7	4.2	2.8
2309E-2RS1TN9	2309E-2RS1KTN9	1.3	40.95	14.07	0.74	-	4725	0.05	0.23	2.7	4.2	2.8
2309ETN9	2309EKTN9	1.25	66.89	20.27	1.05	13650	9450	0.05	0.33	1.9	3	2
1210ETN9	1210EKTN9	0.53	27.83	9.61	0.5	16800	10500	0.04	0.21	3	4.6	3.2
2210E-2RS1TN9	2210E-2RS1KTN9	0.57	24.05	8.56	0.44	-	5040	0.045	0.2	3.2	4.9	3.2
2210ETN9	2210EKTN9	0.6	35.49	11.76	0.6	14700	9975	0.045	0.23	2.7	4.2	2.8
1310ETN9	1310EKTN9	1.2	45.78	14.7	0.76	12600	8400	0.04	0.24	2.6	4.1	2.8
2310E-2RS1TN9	2310E-2RS1KTN9	1.65	45.78	14.7	0.76	-	4200	0.05	0.24	2.6	4.1	2.8
2310	2310K	1.65	66.89	21	1.09	14700	9975	0.05	0.43	1.5	2.3	1.6
1211ETN9	1211EKTN9	0.71	28.98	11.13	0.57	14700	9450	0.04	0.19	3.3	5.1	3.6
2211E-2RS1TN9	2211E-2RS1KTN9	0.79	28.98	11.13	0.57	-	4515	0.045	0.19	3.3	5.1	3.6
2211ETN9	2211EKTN9	0.81	40.95	14.07	0.74	12600	8925	0.045	0.23	2.7	4.2	2.8
1311ETN9	1311EKTN9	1.6	53.24	18.9	0.97	11550	7875	0.04	0.23	2.7	4.2	2.8
2311	2311K	2.1	79.91	25.2	1.31	11550	7875	0.05	0.4	1.6	2.4	1.6
1212ETN9	1212EKTN9	0.9	32.76	12.81	0.65	12600	8925	0.04	0.19	3.3	5.1	3.6
2212E-2RS1TN9	2212E-2RS1KTN9	1.05	32.76	12.81	0.65	-	3990	0.045	0.19	3.3	5.1	3.6
2212ETN9	2212EKTN9	1.1	51.24	17.85	0.92	11550	8400	0.045	0.24	2.6	4.1	2.8

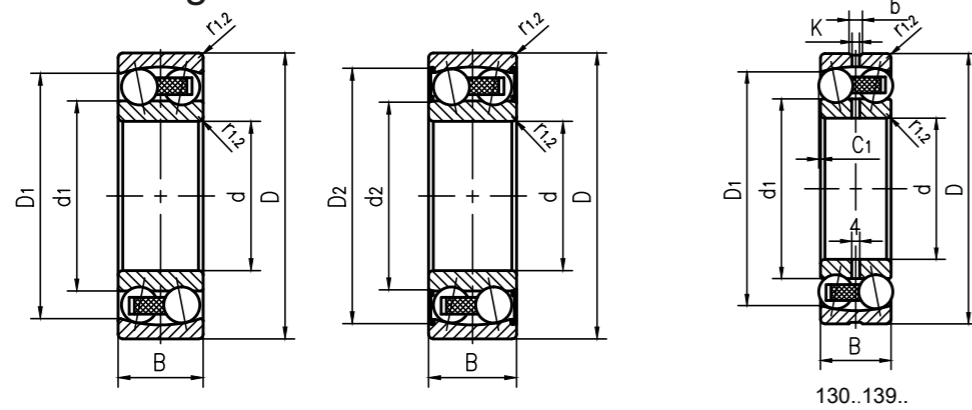
Self-aligning ball bearing



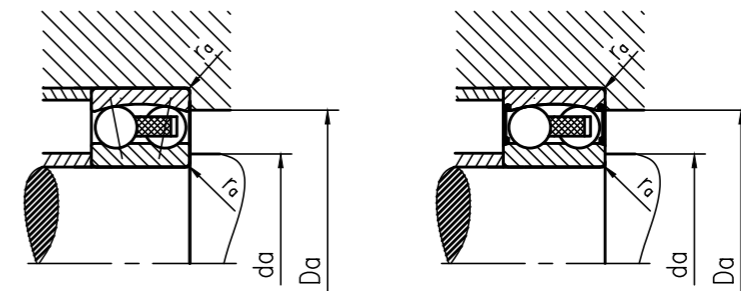
Type		Main dimensions			Dimensions						Shoulder and chamfer dimensions			
Bearing with cylindrical bore	Taper Hole	d	D	B	d ₁ , d ₂	D ₁ , D ₂	C ₁	b	K	r _{1,2}	d _a Min.	d _a Max.	D _a Max.	r _a Max.
-	-	mm												
1312ETN9	1312EKTN9	60	130	31	91.6	117	-	-	-	2.1	72	-	118	2
2312	2312K	60	130	46	77.1	110	-	-	-	2.1	72	-	118	2
1213ETN9	1213EKTN9	65	120	23	85.1	104	-	-	-	1.5	74	-	111	1.5
2213E-2RS1TN9	2213E-2RS1KTN9	65	120	31	79.3	106	-	-	-	1.5	74	79	111	1.5
2213ETN9	2213EKTN9	65	120	31	80.6	106	-	-	-	1.5	74	-	111	1.5
1313ETN9	1313EKTN9	65	140	33	99	126	-	-	-	2	77	-	128	2
2313	2313K	65	140	48	86	120	-	-	-	2.1	77	-	128	2
1214ETN9	-	70	125	24	87.4	107	-	-	-	1.5	79	-	116	1.5
2214E-2RS1TN9	-	70	125	31	81.4	109	-	-	-	1.5	79	81	116	1.5
2214	-	70	125	31	88	109	-	-	-	1.5	79	-	116	1.5
1314	-	70	150	35	97.5	127	-	-	-	2.1	82	-	138	2
2314	-	70	150	51	92	129	-	-	-	2.1	82	-	138	2
1215	1215K	75	130	25	93	115	-	-	-	1.5	84	-	121	1.5
2215ETN9	2215EKTN9	75	130	31	91.6	117	-	-	-	1.5	84	-	121	1.5
1315	1315K	75	160	37	104	136	-	-	-	2.1	87	-	148	2
2315	2315K	75	160	55	97.8	137	-	-	-	2.1	87	-	148	2
1216	1216K	80	140	26	102	123	-	-	-	2	91	-	129	2
2216ETN9	2216EKTN9	80	140	33	99	126	-	-	-	2	91	-	129	2
1316	1316K	80	170	39	110	145	-	-	-	2.1	92	-	158	2
2316	2316K	80	170	58	104	146	-	-	-	2.1	92	-	158	2
1217	1217K	85	150	28	107	131	-	-	-	2	96	-	139	2
2217	2217K	85	150	36	106	131	-	-	-	2	96	-	139	2
1317	1317K	85	180	41	117	153	-	-	-	3	99	-	166	3
2317	-	85	180	60	115	154	-	-	-	3	99	-	166	3
2317M	2317KM	85	180	60	115	154	-	-	-	3	99	-	166	3

Type		Weight	Basic load rating		Fatigue load limit	Rated speed reference speed	Maximum speed	Calculate the coefficient				
Bearing with cylindrical bore	Taper Hole		Dynamic	Static				P _u	K _t	e	Y ₁	Y ₂
			C	C ₀	-							
-	-	kg	kN		r/min		-					
1312ETN9	1312EKTN9	1.95	61.43	23.1	1.18	9450	6615	0.04	0.22	2.9	4.5	2.8
2312	2312K	2.6	91.46	29.93	1.53	9975	7350	0.05	0.33	1.9	3	2
1213ETN9	1213EKTN9	1.15	36.86	14.7	0.76	11550	7350	0.04	0.18	3.5	5.4	3.6
2213E-2RS1TN9	2213E-2RS1KTN9	1.4	36.86	14.7	0.76	-	3780	0.045	0.18	3.5	5.4	3.6
2213ETN9	2213EKTN9	1.45	60.06	21	1.07	10500	7350	0.045	0.24	2.6	4.1	2.8
1313ETN9	1313EKTN9	2.45	68.25	26.78	1.31	8925	6300	0.04	0.22	2.9	4.5	2.8
2313	2313K	3.25	100.38	34.13	1.74	9450	6615	0.05	0.37	1.7	2.6	1.8
1214ETN9	-	1.25	37.59	15.33	0.79	11550	7350	0.04	0.18	3.5	5.4	3.6
2214E-2RS1TN9	-	1.45	37.59	15.33	0.79	-	3570	0.045	0.18	3.5	5.4	3.6
2214	-	1.5	46.41	17.85	0.92	10500	7035	0.04	0.27	2.3	3.6	2.5
1314	-	3	77.81	28.88	1.41	8925	6300	0.045	0.22	2.9	4.5	2.8
2314	-	3.9	116.55	39.38	1.95	8400	6300	0.05	0.37	1.7	2.6	1.8
1215	1215K	1.35	40.95	16.38	0.84	10500	7035	0.04	0.17	3.7	5.7	4
2215ETN9	2215EKTN9	1.6	61.43	23.1	1.18	9450	6615	0.045	0.22	2.9	4.5	2.8
1315	1315K	3.55	83.27	31.5	1.5	8400	5880	0.045	0.22	2.9	4.5	2.8
2315	2315K	4.7	130.2	45.15	2.14	7875	5880	0.05	0.37	1.7	2.6	1.8
1216	1216K	1.65	41.69	17.85	0.87	9975	6300	0.04	0.16	3.9	6.1	4
2216ETN9	2216EKTN9	2	68.25	26.78	1.31	8925	6300	0.045	0.22	2.9	4.5	2.8
1316	1316K	4.2	92.82	35.18	1.58	7875	5565	0.045	0.22	2.9	4.5	2.8
2316	2316K	6.1	141.75	51.45	2.35	7350	5565	0.05	0.37	1.7	2.6	1.8
1217	1217K	2.05	51.24	21.84	1.03	9450	5880	0.04	0.17	3.7	5.7	4
2217	2217K	2.5	61.43	24.78	1.18	8400	5880	0.04	0.25	2.5	3.9	2.5
1317	1317K	5	102.38	39.9	1.79	7350	5040	0.045	0.22	2.9	4.5	2.8
2317	-	7.05	147	53.55	2.39	7035	5040	0.05	0.37	1.7	2.6	1.8
2317M	2317KM	7.05	147	53.55	2.39	7035	5040	0.05	0.37	1.7	2.6	1.8

Self-aligning ball bearing



130..139..

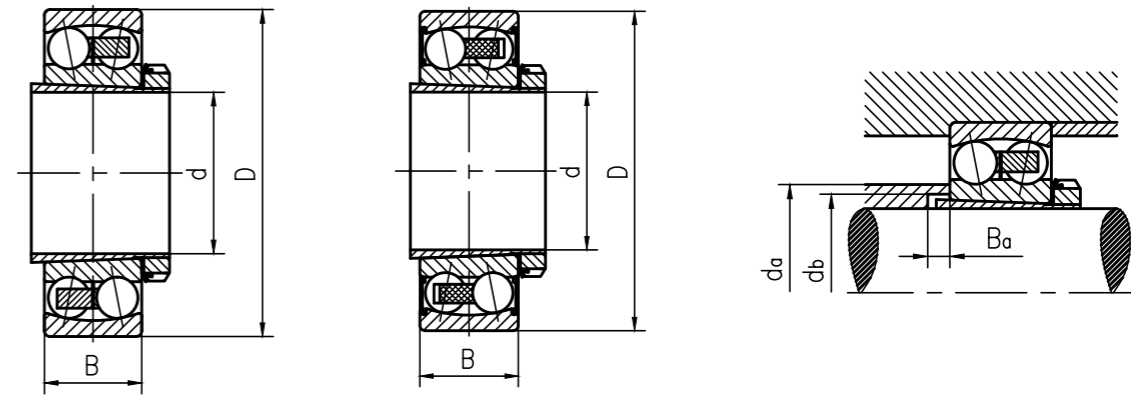


Type		Main dimensions			Dimensions						Shoulder and chamfer dimensions			
Bearing with cylindrical bore	Taper Hole	d	D	B	d ₁ , d ₂	D ₁ , D ₂	C ₁	b	K	r _{1,2}	d _a Min.	d _a Max.	D _a Max.	r _a Max.
		mm			mm						mm			
1218	1218K	90	160	30	112	139	-	-	-	2	101	-	149	2
2218	2218K	90	160	40	112	140	-	-	-	2	101	-	149	2
1318	1318K	90	190	43	122	163	1	-	-	3	104	-	176	3
2318	2318K	90	190	64	121	163	-	-	-	3	104	-	176	3
1219	1219K	95	170	32	120	149	-	-	-	2.1	107	-	158	2
2219	2219K	95	170	43	119	149	-	-	-	2.1	107	-	158	2
1319	1319K	95	200	45	127	171	1.5	-	-	3	109	-	186	3
2319M	2319KM	95	200	67	128	171	-	-	-	3	109	-	186	3
1220	1220K	100	180	34	127	156	-	-	-	2.1	112	-	168	2
2220	2220K	100	180	46	124	157	-	-	-	2.1	112	-	168	2
1320	1320K	100	215	47	136	182	2.5	-	-	3	114	-	201	3
2320	2320K	100	215	73	135	184	-	-	-	3	114	-	201	3
1222	1222K	110	200	38	140	174	-	-	-	2.1	122	-	188	2
2222	2222K	110	200	53	138	175	-	-	-	2.1	122	-	188	2
1322M	1322KM	110	240	50	154	203	2.5	-	-	3	124	-	226	3
1224M	1224KM	120	215	42	149	188	1.3	-	-	2.1	132	-	203	2
1226M	1226KM	130	230	46	163	202	1.3	-	-	3	144	-	216	3
13030	-	150	225	56	175	204	-	8.3	4.5	2.1	161	-	214	2
13036	-	180	280	74	212	250	-	13.9	7.5	2.1	191	-	269	2
13940	-	200	280	60	229	258	-	8.3	4.5	2.1	211	-	269	2
13944	-	220	300	60	248	278	-	8.3	4.5	2.1	231	-	289	2
13948	-	240	320	60	268	298	-	8.3	4.5	2.1	251	-	309	2

Type		Weight	Basic load rating		Fatigue load limit	Rated speed reference speed	Maximum speed	Calculate the coefficient				
Bearing with cylindrical bore	Taper Hole		Dynamic	Static				P _u	K _t	e	Y ₁	Y ₂
			C	C ₀	-							
-	-	kg	kN			r/min	-					
1218	1218K	2.5	60.06	24.78	1.13	8925	5565	0.04	0.17	3.7	5.7	4
2218	2218K	3.4	73.71	29.93	1.39	7875	5565	0.04	0.27	2.3	3.6	2.5
1318	1318K	5.8	122.85	46.2	2.03	7035	4725	0.045	0.22	2.9	4.5	2.8
2318	2318K	8.45	158.55	59.85	2.63	6615	4725	0.05	0.37	1.7	2.6	1.8
1219	1219K	3.1	66.89	28.35	1.26	8400	5250	0.04	0.17	3.7	5.7	4
2219	2219K	4.1	87.36	36.23	1.61	7350	5250	0.04	0.27	2.3	3.6	2.5
1319	1319K	6.7	139.65	53.55	2.27	6615	4515	0.045	0.23	2.7	4.2	2.8
2319M	2319KM	9.8	173.25	67.2	2.89	6300	4725	0.05	0.37	1.7	2.6	1.8
1220	1220K	3.7	72.35	31.5	1.35	7875	5040	0.04	0.17	3.7	5.7	4
2220	2220K	5	102.38	42.53	1.85	7035	5040	0.04	0.27	2.3	3.6	2.5
1320	1320K	8.3	150.15	59.85	2.48	6300	4200	0.045	0.23	2.7	4.2	2.8
2320	2320K	12.5	199.5	84	3.41	5880	4200	0.05	0.37	1.7	2.6	1.8
1222	1222K	5.15	92.82	40.95	1.68	7035	4515	0.04	0.17	3.7	5.7	4
2222	2222K	7.1	130.2	54.6	2.23	6300	4515	0.04	0.28	2.2	3.5	2.5
1322M	1322KM	12	171.15	75.6	2.89	5565	3780	0.045	0.22	2.9	4.5	2.8
1224M	1224KM	6.75	124.95	55.65	2.23	6615	4200	0.04	0.19	3.3	5.1	3.6
1226M	1226KM	8.3	133.35	61.43	2.35	5880	3780	0.04	0.19	3.3	5.1	3.6
13030	-	7.5	60.06	24.78	0.92	5880	3570	0.02	0.24	2.6	4.1	2.8
13036	-	16	100.38	42	1.41	4725	2940	0.02	0.25	2.5	3.9	2.5
13940	-	10.5	63.53	30.45	1.02	4515	2730	0.015	0.19	3.3	5.1	3.6
13944	-	11	63.53	32.03	1.02	3990	2520	0.015	0.18	3.5	5.4	3.6
13948	-	11.5	63.53	33.6	1.03	3990	2310	0.015	0.16	3.9	6.1	4

Self-aligning ball bearing

Self-aligning ball bearing on the clamping sleeve



Type		Main dimensions			Shoulder and chamfer dimensions			Weight
Bearing	Set sleeve	d	D	B	d _a Max.	d _b Min.	B _a Min.	Bearing tightening sleeve
		mm			mm			
1204EKTN9	H204	17	47	14	28.5	23	5	0.16
1205EKTN9	H205	20	52	15	33	28	5	0.21
2205E-2RS1KTN9	H305E	20	52	18	31	28	5	0.23
2205EKTN9	H305	20	52	18	32	28	5	0.23
1305EKTN9	H305	20	62	17	37	28	6	0.33
2305E-2RS1KTN9	H2305	20	62	24	32.5	29	5	0.42
2305EKTN9	H2305	20	62	24	35.5	29	5	0.42
1206EKTN9	H206	25	62	16	40	33	5	0.32
2206E-2RS1KTN9	H306E	25	62	20	36.5	33	5	0.36
2206EKTN9	H306	25	62	20	38	33	5	0.36
1306EKTN9	H306	25	72	19	44	33	6	0.49
2306E-2RS1KTN9	H2306	25	72	27	40	35	5	0.62
2306K	H2306	25	72	27	41	35	5	0.61
1207EKTN9	H207	30	72	17	47	38	5	0.44
2207E-2RS1KTN9	H307E	30	72	23	42.5	39	5	0.55
2207EKTN9	H307	30	72	23	45	39	5	0.54
1307EKTN9	H307	30	80	21	51	39	7	0.65
2307E-2RS1KTN9	H2307E	30	80	31	43.5	40	5	0.86
2307EKTN9	H2307	30	80	31	46	40	5	0.84
1208EKTN9	H208	35	80	18	53	43	6	0.58
2208E-2RS1KTN9	H308E	35	80	23	49	44	6	0.67
2208EKTN9	H308	35	80	23	52	44	6	0.58
1308EKTN9	H308	35	90	23	61	44	6	0.85
2308EKTN9	H2308	35	90	33	53	45	6	1.1
2308E-2RS1KTN9	H2308	35	90	33	55	45	6	1.2
1209EKTN9	H209	40	85	19	57	48	6	0.68
2209E-2RS1KTN9	H309E	40	85	23	53	50	8	0.76
2209EKTN9	H309	40	85	23	55	50	8	0.78
1309EKTN9	H309	40	100	25	67	50	6	1.2
2309EKTN9	H2309	40	100	36	60	50	6	1.4
2309E-2RS1KTN9	H2309	40	100	36	60.5	50	6	1.55
1210EKTN9	H210	45	90	20	62	53	6	0.77
2210E-2RS1KTN9	H310E	45	90	23	58	55	10	0.84
2210EKTN9	H310	45	90	23	61	55	10	0.87
1310EKTN9	H310	45	110	27	70	55	6	1.45
2310E-2RS1KTN9	H2310	45	110	40	62.5	56	6	2
2310K	H2310	45	110	40	65	56	6	1.9
1211EKTN9	H211	50	100	21	70	60	7	0.99
2211E-2RS1KTN9	H311E	50	100	25	65.5	60	11	1.1
2211EKTN9	H311	50	100	25	67	60	11	1.15

Type		Main dimensions			Shoulder and chamfer dimensions			Weight
Bearing	Set sleeve	d	D	B	d _a Max.	d _b Min.	B _a Min.	Bearing tightening sleeve
		mm			mm			
1311EKTN9	H311	50	120	29	77	60	7	1.9
2311K	H2311	50	120	43	72	61	7	2.4
1212EKTN9	H212	55	110	22	78	64	7	1.2
2212E-2RS1KTN9	H312E	55	110	28	73	65	9	1.4
2212EKTN9	H312	55	110	28	74	65	9	1.45
1312EKTN9	H312	55	130	31	87	65	7	2.15
2312K	H2312	55	130	46	76	66	7	2.95
1213EKTN9	H213	60	120	23	85	70	7	1.45
2213E-2RS1KTN9	H313E	60	120	31	79	70	7	1.75
2213EKTN9	H313	60	120	31	80	70	9	1.8
1313EKTN9	H313	60	140	33	98	70	7	2.85
2313K	H2313	60	140	48	85	72	7	3.6
1215K	H215	65	130	25	93	80	7	2
2215EKTN9	H315	65	130	31	93	80	13	2.3
1315K	H315	65	160	37	104	80	7	4.2
2315K	H2315	65	160	55	97	82	7	5.55
1216K	H216	70	140	26	101	85	7	2.4
2216EKTN9	H316	70	140	33	99	85	13	2.85
1316K	H316	70	170	39	109	85	7	5
2316K	H2316	70	170	58	104	88	7	7.1
1217K	H217	75	150	28	107	90	8	2.95
2217K	H317	75	150	36	105	91	13	3.3
1317K	H317	75	180	41	117	91	8	6
1218K	H218	80	160	30	112	95	8	3.5
2218K	H318	80	160	40	112	96	11	5.5
1318K	H318	80	190	43	122	96	8	6.9
2318K	H2318	80	190	64	115	100	8	9.8
1219K	H219	85	170	32	120	100	8	4.25
2219K	H319	85	170	43	118	102	10	5.3
1319K	H319	85	200	45	127	102	8	7.9
2319KM	H2319	85	200	67	128	105	8	11.5
1220K	H220	90	180	34	127	106	8	5
2220K	H320	90	180	46	124	108	9	6.4
1320K	H320	90	215	47	136	108	8	9.65
2320K	H2320	90	215	73	130	110	8	14
1222K	H222	100	200	38	140	116	8	6.8
2222K	H322	100	200	53	137	118	8	8.85
1322KM	H322	100	240	50	154	118	10	13.5
1224KM	H3024	110	215	42	150	127	12	8.3
1226KM	H3026	115	230	46	163	137	15	11