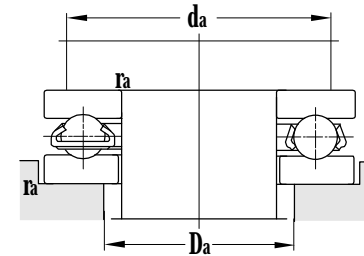
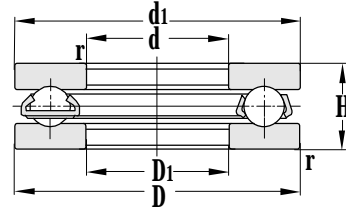
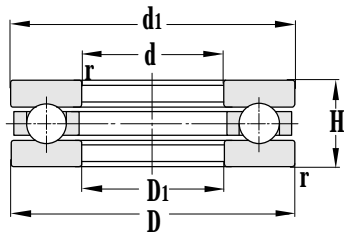


# Thrust Ball Bearing

d 25–55 mm

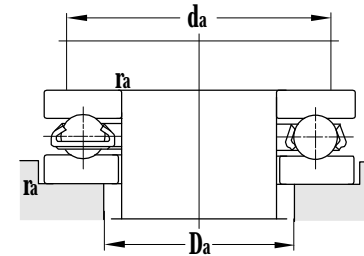
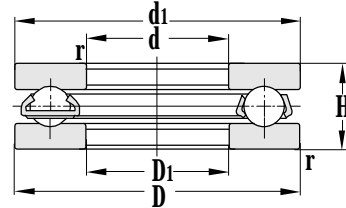
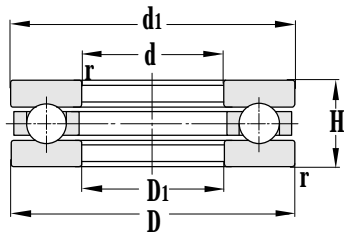


Principal dimensions				Basic load ratings		Limit speed ratings		Designations
d	D	H	r <sub>min</sub>	C <sub>r</sub>	C <sub>or</sub>	Grease	Oil	
mm				kN		r/min		
<b>25</b>	42	11	0.6	18.7	38.0	4800	6300	<b>51105</b>
	47	15	0.6	27.0	54.0	4000	5300	<b>51205</b>
	52	18	1	35.0	59.0	3400	4500	<b>51305</b>
<b>30</b>	47	11	0.6	19.6	42.0	4500	6000	<b>51106</b>
	52	16	0.6	27.3	50.0	3600	4800	<b>51206</b>
	60	21	1	42.5	70.0	2800	3800	<b>51306</b>
	70	28	1	71.0	134	2000	3000	<b>51406</b>
<b>35</b>	52	12	0.6	20.8	50.0	4300	5600	<b>51107</b>
	52	12	0.6	20.8	50.0	4300	5600	<b>51107H</b>
	52	12	0.6	20.8	50.0	4300	5600	<b>51107M</b>
	55	16	0.6	24.9	53.5	4300	5600	<b>51107X3</b>
	62	18	1	37.0	72.0	3000	4000	<b>51207</b>
	68	24	1	55.5	94.5	2400	3400	<b>51307</b>
	68	24	1	55.5	94.5	2400	3400	<b>51307/YA6</b>
	68	24	1	55.5	94.5	2400	3400	<b>51307/YA6</b>
<b>40</b>	60	13	0.6	27.3	62.0	3800	5000	<b>51108</b>
	60	13	0.6	27.3	62.0	3800	5000	<b>51108H</b>
	68	19	1	47.0	104	2800	3800	<b>51208</b>
	68	19	1	47.0	104	2800	3800	<b>51208M</b>
	78	26	1	68.5	120	2000	3000	<b>51308</b>
	100	28	1.1	75.0	189	1700	2400	<b>51708</b>
<b>45</b>	65	14	0.6	26.7	68.0	3400	4500	<b>51109</b>
	65	14	0.6	26.7	68.0	3400	4500	<b>51109M</b>
	73	20	1	38.0	85.0	2600	3600	<b>51209</b>
	85	28	1	74.5	150	1900	2800	<b>51309</b>
<b>50</b>	70	14	0.6	27.3	73.5	3200	4300	<b>51110</b>
	70	14	0.6	27.3	73.5	3200	4300	<b>51110M</b>
	78	22	1	54.5	114	2400	3400	<b>51210</b>
	95	31	1.1	96.0	186	1800	2600	<b>51310</b>
	110	43	1.5	159	335	1600	2500	<b>51410M</b>
<b>55</b>	78	16	0.6	33.5	83.0	2800	3800	<b>51111</b>

Other dimensions		Abutment and fillet dimensions			Weight
d1	D1	d <sub>amin</sub>	D <sub>amax</sub>	r <sub>amax</sub>	
mm		mm			kg
42	26	35	32	0.6	0.0589
47	27	38	34	0.6	0.117
52	27	41	36	1	0.165
47	32	40	37	0.6	0.0642
52	32	43	39	0.6	0.138
60	32	48	42	1	0.266
70	32	54	46	1	3.94
52	37	45	42	0.6	0.0779
52	37	45	42	0.6	0.0779
52	37	45	42	0.6	0.0817
55	37	50	45	0.6	0.141
62	37	51	46	1	0.193
68	37	55	48	1	0.361
68	37	55	48	1	0.301
60	42	52	48	0.6	0.118
60	42	52	48	0.6	0.126
68	42	57	51	1	0.273
68	42	57	51	1	0.324
78	42	63	55	1	0.521
100	58	75	65	1	0.970
65	47	57	53	0.6	0.139
65	47	57	53	0.6	0.162
73	47	62	56	1	0.332
85	47	69	61	1	0.656
70	52	62	58	0.6	0.155
70	52	62	58	0.6	0.186
78	52	67	61	1	0.374
95	52	77	68	1	0.942
110	52	86	74	1.5	1.86
78	57	69	64	0.6	0.226

# Thrust Ball Bearing

d 55–80 mm

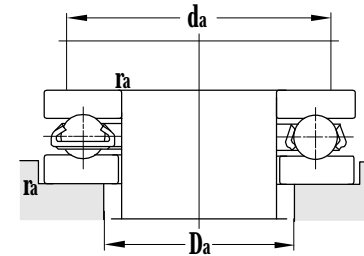
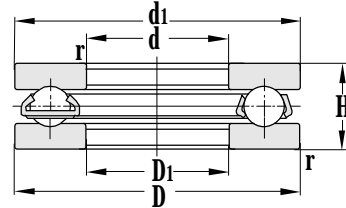
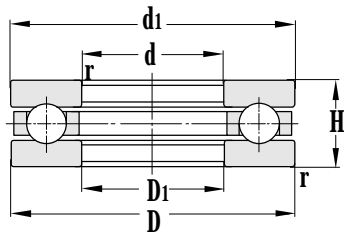


Principal dimensions				Basic load ratings		Limit speed ratings		Designations
d	D	H	r <sub>min</sub>	C <sub>r</sub>	C <sub>or</sub>	Grease	Oil	
mm				kN		r/min		
<b>55</b>	78	16	0.6	33.5	83.0	2800	3800	<b>51111M</b>
	90	25	1	69.0	143	2200	3200	<b>51211</b>
	105	35	1.1	119	220	1700	2400	<b>51311</b>
	120	48	1.5	191	380	1500	2100	<b>51411M</b>
<b>60</b>	85	17	1	41.0	120	2600	3600	<b>51112</b>
	85	17	1	41.0	120	2600	3600	<b>51112M</b>
	95	26	1	74.0	147	1900	2800	<b>51212</b>
	95	26	1	74.0	147	1900	2800	<b>51212M</b>
	110	35	1.1	100	220	1600	2200	<b>51312</b>
	130	51	1.5	200	420	1400	1900	<b>51412M</b>
<b>65</b>	90	18	1	45.5	106	2500	3500	<b>51113</b>
	90	18	1	45.5	106	2500	3500	<b>51113M</b>
	100	27	1	75.5	160	1850	2700	<b>51213</b>
	115	36	1.1	107	235	1500	2000	<b>51313</b>
	140	56	2	239	480	1300	1800	<b>51413M</b>
	140	56	2	240	505	1300	1800	<b>51413J</b>
<b>70</b>	95	18	1	49.5	119	2400	3400	<b>51114</b>
	95	18	1	49.5	119	2400	3400	<b>51114M</b>
	95	18	1	47.5	134	2400	3400	<b>51114/YA8</b>
	105	27	1	77.0	170	1800	2600	<b>51214</b>
	105	27	1	77.0	170	1800	2600	<b>51214/YA8</b>
	125	40	1.1	148	315	1400	1900	<b>51314</b>
	125	40	1.1	148	315	1400	1900	<b>51314M</b>
	150	60	2	257	540	1200	1600	<b>51414M</b>
<b>75</b>	100	19	1	48.0	143	2200	3200	<b>51115</b>
	100	19	1	48.0	143	2200	3200	<b>51115M</b>
	110	27	1	66.0	180	1750	2500	<b>51215</b>
	135	44	1.5	175	380	1300	1800	<b>51315</b>
	160	65	2	251	560	1100	1500	<b>51415M</b>
<b>80</b>	105	19	1	49.5	150	2000	3000	<b>51116</b>
	115	28	1	74.5	205	1700	2400	<b>51216</b>

Other dimensions		Abutment and fillet dimensions			Weight
d1	D1	d <sub>amin</sub>	D <sub>amax</sub>	r <sub>amax</sub>	
mm		mm			kg
78	57	69	64	0.6	0.242
90	57	76	69	1	0.571
105	57	85	75	1	1.35
120	57	94	81	1.5	2.61
85	62	75	70	1	0.263
85	62	75	70	1	0.294
95	62	81	74	1	0.695
95	62	81	74	1	0.752
110	62	90	80	1	1.39
130	62	102	88	1.5	3.48
90	67	80	75	1	0.315
90	67	80	75	1	0.363
100	67	86	79	1	0.733
115	67	95	85	1	1.54
140	68	110	95	2	4.71
140	68	110	95	2	4.16
95	72	85	80	1	0.351
95	72	85	80	1	0.377
95	72	85	80	1	0.348
105	72	91	84	1	0.764
105	72	91	84	1	0.756
125	72	103	92	1	2.00
125	72	103	92	1	2.85
150	73	118	102	2	5.06
100	77	90	85	1	0.382
100	77	90	85	1	0.429
110	77	96	89	1	0.83
135	77	111	99	1.5	2.61
160	78	126	109	2	6.61
105	82	95	90	1	0.399
115	82	101	94	1	0.92

# Thrust Ball Bearing

d 80~110 mm

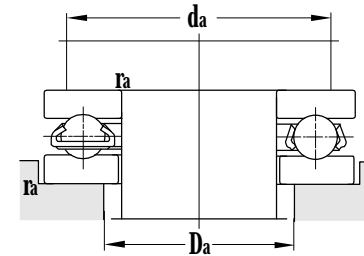
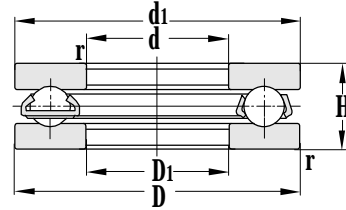
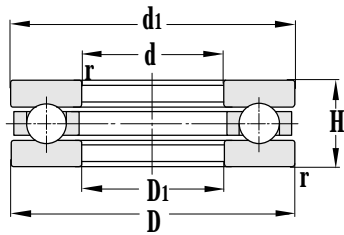


Principal dimensions				Basic load ratings		Limit speed ratings		Designations
d	D	H	r <sub>min</sub>	C <sub>r</sub>	C <sub>or</sub>	Grease	Oil	
mm				kN		r/min		
<b>80</b>	140	44	1.5	181	425	1200	1700	<b>51316</b>
	140	44	1.5	173	395	1200	1700	<b>51316M</b>
	170	68	1.1	315	655	1000	1400	<b>51416M</b>
<b>85</b>	110	19	1	49.5	160	1900	2800	<b>51117</b>
	125	31	1	111	270	1600	2200	<b>51217</b>
	150	49	1.5	223	475	1100	1600	<b>51317</b>
	150	49	1.5	223	475	1100	1600	<b>51317M</b>
	180	72	1.1	335	735	950	1200	<b>51417M</b>
	180	72	1.1	335	735	950	1200	<b>51417</b>
<b>90</b>	120	22	1	65.0	205	1800	2600	<b>51118</b>
	120	22	1	65.0	205	3000	4000	<b>51118M/P4</b>
	135	35	1.1	132	320	1500	2000	<b>51218</b>
	155	50	1.5	232	520	1000	1500	<b>51318</b>
	155	50	1.5	232	520	1000	1500	<b>51318M</b>
	190	77	2.1	380	800	900	1100	<b>51418M</b>
<b>100</b>	135	25	1	83.5	285	1700	2400	<b>51120</b>
	135	25	1	83.5	285	1700	2400	<b>51120M</b>
	150	38	1.1	125	350	1300	1800	<b>51220</b>
	150	38	1.1	125	350	1300	1800	<b>51220M</b>
	170	55	1.5	276	705	950	1400	<b>51320</b>
	170	55	1.5	276	705	950	1400	<b>51320M</b>
	172	57	1.8	276	705	900	1300	<b>51720</b>
	210	85	3	420	1130	850	1000	<b>51420</b>
	210	85	3	420	1040	850	1000	<b>51420M</b>
	<b>100.2</b>	150	38	1.1	163	430	1600	1800
<b>110</b>	145	25	1	85.5	310	1650	2300	<b>51122</b>
	145	25	1	85.5	310	1650	2300	<b>51122M</b>
	160	38	1.1	131	395	1200	1700	<b>51222</b>
	160	38	1.1	131	395	1200	1700	<b>51222M</b>
	190	63	2	305	800	850	1200	<b>51322M</b>
	190	63	2	305	800	850	1200	<b>51322</b>

Other dimensions		Abutment and fillet dimensions			Weight
d1	D1	d <sub>amin</sub>	D <sub>amax</sub>	r <sub>amax</sub>	
mm		mm			kg
140	82	116	104	1.5	2.63
140	82	116	104	1.5	2.92
170	83	133	117	2	7.89
110	87	100	95	1	0.419
125	88	109	101	1	1.21
150	88	124	111	1.5	3.49
150	88	124	111	1.5	3.97
177	88	141	124	2	8.60
177	88	141	124	2	8.35
120	92	108	102	1	0.632
120	92	108	102	1	0.721
135	93	117	108	1	1.67
155	93	129	116	1.5	4.02
155	93	129	116	1.5	4.44
187	93	149	131	2	9.91
135	102	121	114	1	0.937
135	102	121	114	1	0.937
150	103	130	120	1	2.12
150	103	130	120	1	2.33
170	103	142	128	1.5	4.85
170	103	142	128	1.5	5.42
172	100.2	143	129	1.8	5.36
205	103	165	145	2.5	13.6
205	103	165	145	2.5	13.5
150	100.2	130	120	1	2.20
145	112	131	124	1	1.12
145	112	131	124	1	1.21
160	113	140	130	1	2.43
160	113	140	130	1	2.67
187	113	158	142	2	7.36
187	113	158	142	2	7.08

# Thrust Ball Bearing

d 110~150 mm

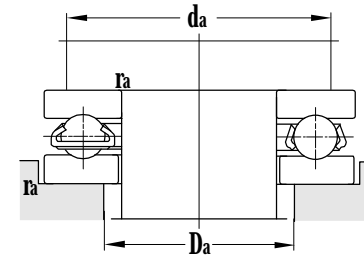
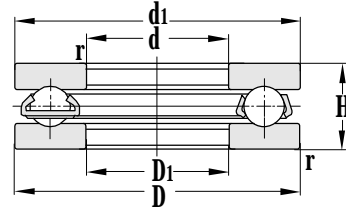
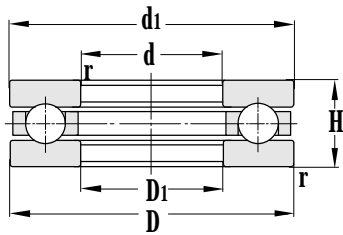


Principal dimensions				Basic load ratings		Limit speed ratings		Designations
d	D	H	r <sub>min</sub>	C <sub>r</sub>	C <sub>or</sub>	Grease	Oil	
mm				kN		r/min		
<b>110</b>	230	95	3	490	1200	750	900	<b>51422M</b>
<b>120</b>	155	25	1	86.5	330	1600	2200	<b>51124</b>
	155	25	1	86.5	330	1600	2200	<b>51124M</b>
	170	39	1.1	167	430	1100	1600	<b>51224</b>
	170	39	1.1	167	430	1100	1600	<b>51224M</b>
	210	70	2.1	350	960	800	1100	<b>51324M</b>
	210	70	2.1	350	960	800	1100	<b>51324</b>
	250	102	4	535	1670	600	800	<b>51424M</b>
<b>130</b>	170	27	3	111	415	1500	2000	<b>51726M</b>
	170	30	1	111	415	1400	1900	<b>51126M</b>
	170	30	1	111	415	1400	1900	<b>51126</b>
	190	45	1.5	230	575	1000	1500	<b>51226</b>
	190	45	1.5	230	575	1000	1500	<b>51226M</b>
	225	75	2.1	395	1120	750	1000	<b>51326M</b>
	225	75	2.1	395	1120	750	1000	<b>51326</b>
	270	110	4	635	1670	560	750	<b>51426J</b>
	270	110	4	635	1670	560	750	<b>51426</b>
	<b>140</b>	180	31	1	114	430	1300	1800
180		31	1	114	430	1300	1800	<b>51128M</b>
200		46	1.5	234	610	950	1400	<b>51228</b>
200		46	1.5	234	610	950	1400	<b>51228M</b>
240		80	2.1	415	1300	700	950	<b>51328</b>
280		112	4	630	1700	530	700	<b>51428</b>
<b>150</b>		190	31	1	117	430	1200	1700
	190	31	1	117	430	1200	1700	<b>51130</b>
	200	35	2.1	164	535	1100	1600	<b>51730M</b>
	215	50	1.5	262	785	900	1300	<b>51230M</b>
	215	50	1.5	262	785	900	1300	<b>51230</b>
	250	80	2.1	430	1370	670	900	<b>51330M</b>
	250	80	2.1	430	1370	670	900	<b>51330</b>
	300	120	4	675	2240	500	670	<b>51430</b>

Other dimensions		Abutment and fillet dimensions			Weight
d1	D1	d <sub>amin</sub>	D <sub>amax</sub>	r <sub>amax</sub>	
mm		mm			kg
225	113	181	159	2.5	18.6
155	122	141	134	1	1.13
155	122	141	134	1	1.25
170	123	150	140	1	2.71
170	123	150	140	1	2.58
205	123	173	157	2	9.85
205	123	173	157	2	9.43
245	123	197	173	3	23.9
170	130.2	154	146	1	1.65
170	170	154	146	1	1.86
170	170	154	146	1	1.67
187	133	166	154	1.5	4.17
187	133	166	154	1.5	4.64
220	134	186	169	2	12.5
220	134	186	169	2	11.6
265	134	213	187	3	28.8
265	134	213	187	3	29.0
178	142	164	156	1	1.80
178	142	164	156	1	2.00
197	143	176	164	1.5	4.49
197	143	176	164	1.5	4.33
235	144	199	181	2	14.6
275	144	223	197	3	31.6
188	152	174	166	1	2.19
188	152	174	166	1	1.96
200	150.3	187	168	2	3.15
212	153	189	176	1.5	5.80
212	153	189	176	1.5	5.61
245	154	209	191	2	17.0
245	154	209	191	2	17.0
295	154	239	211	3	38.7

# Thrust Ball Bearing

d 160~220 mm

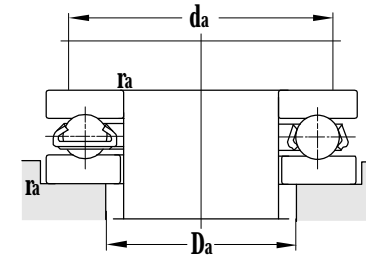
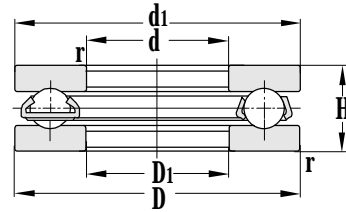
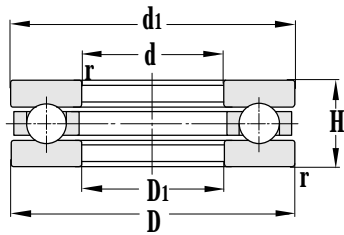


Principal dimensions				Basic load ratings		Limit speed ratings		Designations
d	D	H	r <sub>min</sub>	C <sub>r</sub>	C <sub>or</sub>	Grease	Oil	
mm				kN		r/min		
<b>160</b>	200	31	1	121	455	1150	1650	<b>51132M</b>
	225	51	1.5	266	835	850	1200	<b>51232M</b>
	225	51	1.5	266	835	850	1200	<b>51232</b>
	270	87	3	455	1630	630	850	<b>51332M</b>
<b>170</b>	215	34	1.1	131	530	1100	1600	<b>51134M</b>
	215	34	1.1	110	430	1100	1600	<b>51134M-1</b>
	215	34	1.1	131	530	1100	1600	<b>51134</b>
	240	55	1.5	281	1000	830	1100	<b>51234M</b>
	240	55	1.5	281	1000	830	1100	<b>51234</b>
	280	87	3	470	1730	600	800	<b>51334</b>
<b>180</b>	225	34	1.1	151	560	1000	1500	<b>51136M</b>
	225	34	1.1	151	560	1000	1500	<b>51136</b>
	250	56	1.5	295	1060	800	1050	<b>51236M</b>
	250	56	1.5	295	1060	800	1050	<b>51236</b>
	300	95	3	515	1960	560	750	<b>51336</b>
<b>190</b>	240	37	1.1	178	670	950	1400	<b>51138M</b>
	240	37	1.1	178	670	950	1400	<b>51138</b>
	270	62	2	355	1250	780	1000	<b>51238J</b>
	270	62	2	355	1250	780	1000	<b>51238</b>
	320	105	4	607	2350	500	700	<b>51338</b>
	<b>190.5</b>	266.7	57.1	4	276	695	710	1030
<b>200</b>	250	37	1.1	183	695	930	1350	<b>51140M</b>
	280	62	2	350	1290	750	980	<b>51240J</b>
	280	62	2	350	1290	750	980	<b>51240</b>
	340	110	4	660	2550	480	630	<b>51340</b>
<b>220</b>	270	37	1.1	186	785	900	1300	<b>51144</b>
	300	63	2	365	1430	700	950	<b>51244</b>
	300	63	2	365	1430	700	950	<b>51244J</b>
	300	93.75	2	400	1550	650	900	<b>51244X2V</b>

Other dimensions		Abutment and fillet dimensions			Weight
d1	D1	d <sub>amin</sub>	D <sub>amax</sub>	r <sub>amax</sub>	
mm		mm			kg
198	162	184	176	1	2.38
222	163	199	186	1.5	6.19
222	163	199	186	1.5	6.08
265	164	225	205	2.5	18.8
213	172	197	188	1	2.99
213	172	197	188	1	2.94
213	172	197	188	1	2.64
237	173	212	198	1.5	7.65
237	173	212	198	1.5	7.33
275	174	235	215	2.5	19.9
222	183	207	198	1	3.08
222	183	207	198	1	2.86
247	183	222	208	1.5	8.15
247	183	222	208	1.5	8.02
295	184	251	229	2.5	26.7
237	193	220	210	1	4.02
237	193	220	210	1	3.62
267	194	238	222	2	11.0
267	194	238	222	2	11.7
315	195	266	244	3	33.5
190.5	266.7	242.6	214.6	4	14.3
247	203	230	220	1	3.60
277	204	248	232	2	10.9
277	204	248	232	2	11.5
335	205	282	258	3	30.8
267	223	250	240	1	4.45
297	224	268	252	2	12.9
297	224	268	252	2	12.2
300	220.5	268	252	2	19.8

# Thrust Ball Bearing

d 230~380 mm

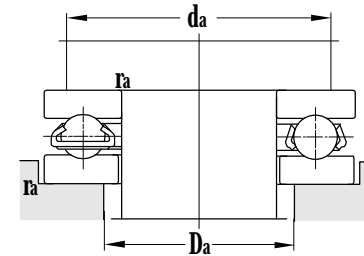
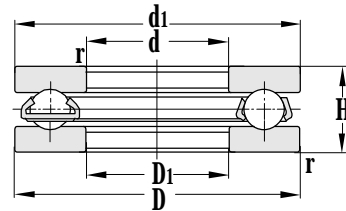
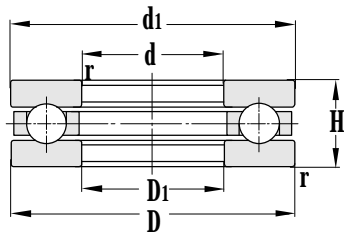


Principal dimensions				Basic load ratings		Limit speed ratings		Designations
d	D	H	r <sub>min</sub>	C <sub>r</sub>	C <sub>or</sub>	Grease	Oil	
mm				kN		r/min		
<b>230</b>	300	53.4	2.1	264	955	650	900	<b>51746</b>
<b>240</b>	300	45	1.5	259	1020	850	1200	<b>51148</b>
	340	78	2.1	455	1960	630	860	<b>51248</b>
	340	70	2.5	415	1650	600	800	<b>51748</b>
	340	70	2.5	415	1650	600	800	<b>51748J</b>
	380	112	4	695	2870	430	600	<b>51348</b>
<b>260</b>	320	45	1.5	264	1080	800	1100	<b>51152</b>
	360	79	2.1	475	2120	600	800	<b>51252</b>
	360	79	2.1	475	2120	600	800	<b>51252J</b>
<b>280</b>	350	53	1.5	335	1430	640	900	<b>51156</b>
	380	80	2.1	495	2270	560	750	<b>51256</b>
<b>300</b>	380	62	2	415	1730	630	850	<b>51160</b>
	420	95	3	595	2940	530	710	<b>51260</b>
	435	104	3.7	740	3410	450	600	<b>51760</b>
	432	104.8	3.7	460	2240	450	600	<b>51760V</b>
<b>320</b>	400	63	2	425	1990	610	800	<b>51164</b>
	440	95	3	560	2940	500	700	<b>51264</b>
	399.5	63	2	425	1990	600	800	<b>51164X1</b>
<b>340</b>	420	64	2	420	1920	600	830	<b>51168</b>
	460	96	3	605	3130	450	600	<b>51268</b>
	460	96	3	605	3130	450	600	<b>51268/YB5</b>
	540	160	5	1120	5700	400	530	<b>51368</b>
<b>350</b>	476	85	3.7	630	3150	430	550	<b>51770</b>
<b>360</b>	440	65	2	430	2040	560	750	<b>51172</b>
	500	110	4	795	4050	400	530	<b>51272</b>
<b>380</b>	460	65	2	420	2110	850	1000	<b>51176/P4</b>

Other dimensions		Abutment and fillet dimensions			Weight
d1	D1	d <sub>amin</sub>	D <sub>amax</sub>	r <sub>amax</sub>	
mm		mm			kg
300	230.3	270	260	2	9.47
297	243	276	264	1.5	7.28
335	244	299	281	2	21.1
340	238	299	281	2.5	19.4
340	238	299	281	2.5	18.8
375	245	320	300	3	49.6
317	263	296	248	1.5	7.56
355	264	319	301	2	23.3
355	264	319	301	2	22.0
347	283	322	308	1.5	11.4
375	284	339	321	2	25.3
376	304	348	332	2	17.4
415	304	371	349	2.5	40.0
435	300.3	379	356	3	50.7
432	300.3	379	356	3	49.7
396	324	368	352	2	18.0
435	325	391	369	3	44.5
396	324	391	369	2	18.0
416	344	388	372	2	19.9
455	345	411	389	2.5	44.6
455	345	411	389	2.5	44.6
535	345	452	356	4	137
476	350.4	425	401	3	43.3
436	364	408	392	2	23.9
495	365	442	418	3	64.7
456	384	445	394	2	22.5

# Thrust Ball Bearing

d 400~710 mm

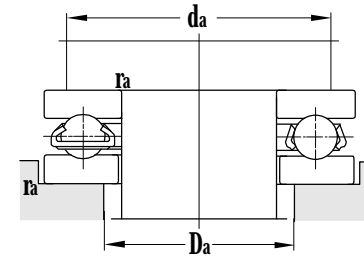
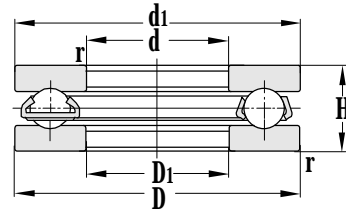
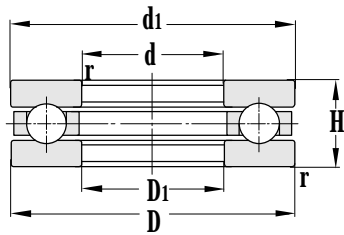


Principal dimensions				Basic load ratings		Limit speed ratings		Designations
d	D	H	r <sub>min</sub>	C <sub>r</sub>	C <sub>or</sub>	Grease	Oil	
mm				kN		r/min		
<b>400</b>	480	65	2	435	2240	800	1000	<b>51180/P5</b> <b>51280</b>
	540	112	4	835	4450	380	510	
<b>420</b>	500	65	2	440	2560	530	700	<b>51184</b> <b>51784/P4</b>
	550	80	2.1	570	3110	500	600	
<b>440</b>	540	80	2.1	565	3200	500	650	<b>51188</b>
<b>460</b>	560	80	2.1	585	3200	450	600	<b>51192</b> <b>51292</b> <b>51292F1</b>
	620	130	5	895	5250	350	500	
	620	130	5	895	5250	350	500	
<b>480</b>	580	80	2.1	600	3500	400	500	<b>51196</b>
<b>500</b>	600	80	2.1	615	3500	430	560	<b>511/500/P5</b> <b>511/500</b> <b>511/500F3</b> <b>511/500/P5YB5</b>
	600	80	2.1	615	3500	430	560	
	600	80	2.1	615	3500	430	560	
	600	80	2.1	615	3500	430	560	
<b>530</b>	640	85	3	690	4300	400	530	<b>511/530</b> <b>511/530/P5YB5</b>
	640	85	3	690	4300	400	530	
<b>560</b>	670	85	3	650	4550	390	510	<b>511/560</b>
<b>600</b>	710	85	3	720	4700	380	500	<b>511/600</b> <b>511/600F3</b> <b>511/600/P4YB5</b> <b>591/600</b> <b>591/600F3</b>
	710	85	3	720	4700	380	500	
	710	85	3	720	4700	380	500	
	710	67	3	520	3450	450	600	
	710	67	3	520	3450	450	600	
<b>630</b>	780	112	4	905	6150	320	430	<b>517/630</b>
<b>670</b>	800	105	4	885	6550	300	400	<b>511/670F3</b> <b>511/670/P5</b>
	800	105	4	885	6550	300	400	
<b>710</b>	950	185	8	1350	10010	260	300	<b>512/710X1</b>

Other dimensions		Abutment and fillet dimensions			Weight
d1	D1	d <sub>amin</sub>	D <sub>amax</sub>	r <sub>amax</sub>	
mm		mm			kg
476	404	448	432	2	23.0
535	405	517	423	4	71.8
496	424	468	452	2	24.5
545	425	531	439	2	50.3
535	444	499	481	2	40.6
555	464	519	501	2	42.2
615	465	552	528	4	114
615	465	552	528	4	113
575	484	561	498	2	43.7
595	505	559	541	2	45.3
595	505	559	541	2	45.3
595	505	559	541	2	44.7
595	505	559	541	2	45.3
635	534	595	575	2.5	57.1
635	534	595	575	2.5	56.8
564	666	625	606	2.5	58.7
705	604	667	643	2.5	64.9
705	604	665	645	2.5	64.3
705	604	667	643	2.5	64.9
705	604	663	647	2.5	49.2
705	604	663	647	2.5	48.3
760	650	717	693	3	118
795	674	748	722	3	109
795	674	748	722	3	111
950	711	929	732	8	382

# Thrust Ball Bearing

d 750~1800 mm



Principal dimensions				Basic load ratings		Limit speed ratings		Designations
d	D	H	r <sub>min</sub>	C <sub>r</sub>	C <sub>or</sub>	Grease	Oil	
mm				kN		r/min		
<b>750</b>	900	90	4	815	6330	300	400	<b>591/750</b>
	900	120	4	980	7540	240	340	<b>511/750/P5</b>
<b>780</b>	930	100	4	905	6700	230	300	<b>517/780F3</b>
<b>900</b>	1060	95	5	835	7240	210	280	<b>591/900</b>
<b>950</b>	1110	110	5	1010	8900	200	280	<b>591/950X3/YB2</b>
<b>980</b>	1120	120	5	1080	9700	190	260	<b>517/980/P5</b>
<b>1060</b>	1250	150	5	1390	13200	180	250	<b>511/1060</b>
	1250	150	5	1390	13200	180	250	<b>511/1060/P4YB5</b>
<b>1380</b>	1540	130	5	1280	1410	170	240	<b>517/1380</b>
	1540	130	5	1280	1410	170	240	<b>517/1380/P5YB5</b>
<b>1700</b>	1960	170	7.5	1510	18800	150	220	<b>511/1700X3/P5YB5</b>
<b>1720</b>	1880	130	5	1440	17900	140	210	<b>517/1720</b>
<b>1800</b>	2000	140	5	1730	22300	120	180	<b>517/1800/P5</b>

Other dimensions		Abutment and fillet dimensions			Weight
d1	D1	d <sub>amin</sub>	D <sub>amax</sub>	r <sub>amax</sub>	
mm		mm			kg
895	755	836	810	3	108
895	755	839	810	3	158
930	782	912	800	4	128
1054	906	1041	919	5	143
1105	955	1092	968	5	183
1115	985	1097	1006	5	183
1244	1066	1223	1087	5	343
1244	1066	1223	1087	5	343
1535	1385	1475	1445	4	319
1535	1385	1475	1445	4	319
1955	1705	1943	1717	7	824
1880	1721.2	1859	1743	5	401
1990	1810	1969	1831	5	545