



ПЛАШКИ КРУГЛЫЕ ДЛЯ ТРУБНОЙ ЦИЛИНДРИЧЕСКОЙ РЕЗЬБЫ HÖRTZ

Материал: инструментальная легированная сталь 9ХС ГОСТ 9740-71

КОД	d	D	L	КОД	d	D	L	КОД	d	D	L
204127	G1/16"	25	9	204132	G5/8"	55	16	204137	G1 1/4"	75	20
204128	G1/8"	30	11	204133	G3/4"	55	16	204138	G1 3/8"	90	22
204129	G1/4"	38	10	204134	G7/8"	65	18	204139	G1 1/2"	90	22
204130	G3/8"	45	14	204135	G1"	65	18	204140	G1 3/4"	105	22
204131	G1/2"	45	14	204136	G1 1/8"	75	20	204141	G2"	105	22



ПЛАШКИ КРУГЛЫЕ ДЛЯ ДЮЙМОВОЙ КОНИЧЕСКОЙ РЕЗЬБЫ HÖRTZ

Материал: инструментальная легированная сталь 9ХС
ГОСТ 6228-80

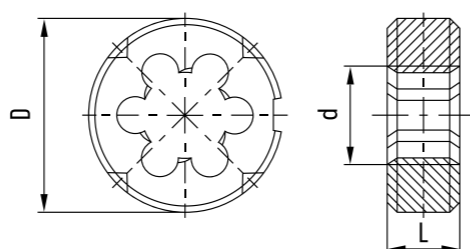
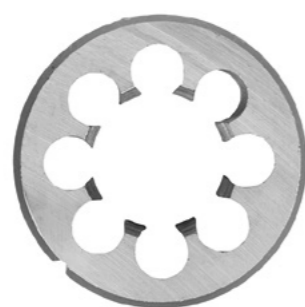
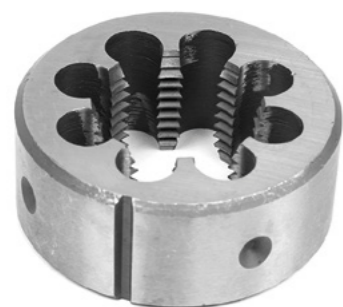
КОД	d	D	L
204154	K1/16"	25	11
204155	K1/8"	30	12
204156	K1/4"	38	18
204157	K3/8"	45	18
204153	K1/2"	45	24
204159	K3/4"	55	24
204160	K1"	65	28
204164	K1 1/4"	75	30
204162	K1 1/2"	90	30
204161	K2"	105	32



ПЛАШКИ КРУГЛЫЕ ДЛЯ ТРУБНОЙ КОНИЧЕСКОЙ РЕЗЬБЫ HÖRTZ

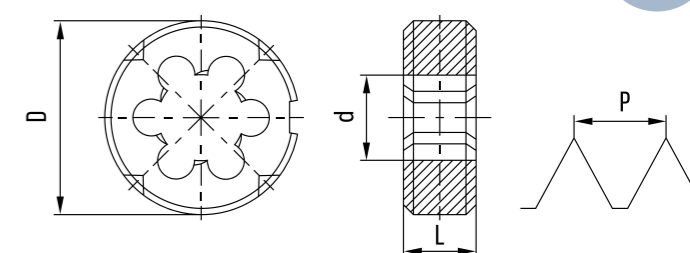
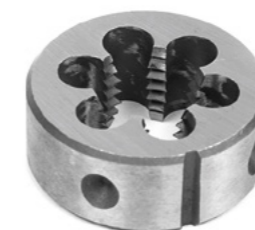
Материал: инструментальная легированная сталь 9ХС
ГОСТ 6228-80

КОД	d	D	L
204142	R1/16"	30	11
204143	R1/8"	30	11
204144	R1/4"	38	14
204145	R3/8"	45	18
204146	R1/2"	55	22
204147	R3/4"	55	22
204148	R1"	65	25
204151	R1 1/4"	75	30
204150	R1 1/2"	90	36
204149	R2"	105	36



ПЛАШКИ КРУГЛЫЕ ДЛЯ МЕТРИЧЕСКОЙ РЕЗЬБЫ HÖRTZ

Материал: инструментальная легированная сталь 9ХС
ГОСТ 9740-71



d/P	D	L	d/P	D	L	d/P	D	L	d/P	D	L	d/P	D	L
M1x0.25	12	3	M8x1	25	9	M16x1.5	45	14	M30x0.5	65	14	M42x3	75	30
M1.1x0.25	12	3	M8x1.25	25	9	M16x2	45	18	M30x0.75	65	14	M42x4	75	30
M1.2x0.25	12	3	M9x0.5	25	7	M18x0.5	45	10	M30x1	65	18	M42x4.5	75	30
M1.4x0.3	12	3	M9x0.75	25	9	M18x0.75	45	10	M30x1,5	65	18	M45x1	90	18
M1.6x0.35	12	3	M9x1	25	9	M18x1	45	14	M30x2	65	18	M45x1.5	90	22
M1.8x0.35	12	3	M9x1.25	25	9	M18x1.5	45	14	M30x3	65	25	M45x2	90	22
M2x0.4	12	3	M10x0.5	30	8	M18x2	45	14	M30x3,5	65	25	M45x3	90	36
M2.2x0.25	16	3	M10x0.75	30	11	M18x2.5	45	18	M33x0,75	65	14	M45x4	90	36
M2.5x0.35	16	3	M10x1	30	11	M20x0.5	45	10	M33x1	65	14	M45x4.5	90	36
M2.5x0.4	16	3	M10x1.25	30	11	M20x0.75	45	10	M33x1.5	65	18	M48x1	90	18
M2.5x0.45	16	3	M10x1.5	30	11	M20x1	45	14	M33x2	65	18	M48x1.5	90	22
M3x0.35	16	3	M11x0.5	30	11	M20x1.25	45	14	M33x3	65	25	M48x2	90	22
M3x0.5	16	3	M11x0.75	30	11	M20x1.5	45	14	M33x3.5	65	25	M48x3	90	36
M3.5x0.35	20	5	M11x1	30	11	M20x2	45	14	M33x4	65	25	M48x4	90	36
M3.5x0.6	20	5	M11x1.5	30	11	M20x2.5	45	18	M36x0.75	65	14	M48x5	90	36
M4x0.5	20	5	M12x0.5	38	10	M22x0.5	55	12	M36x1	65	14	M50x1.5	90	22
M4x0.7	20	5	M12x0.75	38	10	M22x0.75	55	12	M36x1.5	65	18	M50x2	90	22
M4.5x0.5	20	5	M12x1	38	10	M22x1	55	16	M36x2	65	18	M50x3	90	36
M4.5x0.75	20	7	M12x1.25	38	14	M22x1.5	55	16	M36x3	65	25	M52x1	90	18
M5x0.5	20	5	M12x1.5	38	10	M22x2	55	16	M36x4	65	25	M52x1.5	90	22
M5x0.75	20	7	M12x1.75	38	14	M22x2.5	55	22	M39x1	75	16	M52x2	90	22
M5x0.8	20	7	M14x0.5	38	10	M24x0.75	55	12	M39x1.5	75	20	M52x3	90	22
M6x0.5	20	5	M14x0.75	38	10	M24x1	55	16	M39x2	75	20	M52x4	90	36
M6x0.75	20	7	M14x1	38	10	M24x1.5	55	16	M39x3	75	30	M52x5	90	36
M6x0.8	20	7	M14x1.25	38	10	M24x2	55	16	M39x4	75	30	M56x5.5	105	36
M6x1	20	7	M14x1.5	38	10	M24x3	55	22	M40x1.5	75	20	M60x1.5	105	22
M7x0.5	25	7	M14x2	38	14	M27x0.75	65	14	M40x2	75	20	M60x2	105	22
M7x0.75	25	9	M16x0.5	45	10	M27x1	65	18	M40x3	75	30			
M7x1	25	9	M16x0.75	45	10	M27x1.5	65	18	M42x1	75	16			
M8x0.5	25	7	M16x1	45	14	M27x2	65	18	M42x1.5	75	20			
M8x0.75	25	9	M16x1.25	45	14	M27x3	65	25	M42x2	75	20			

