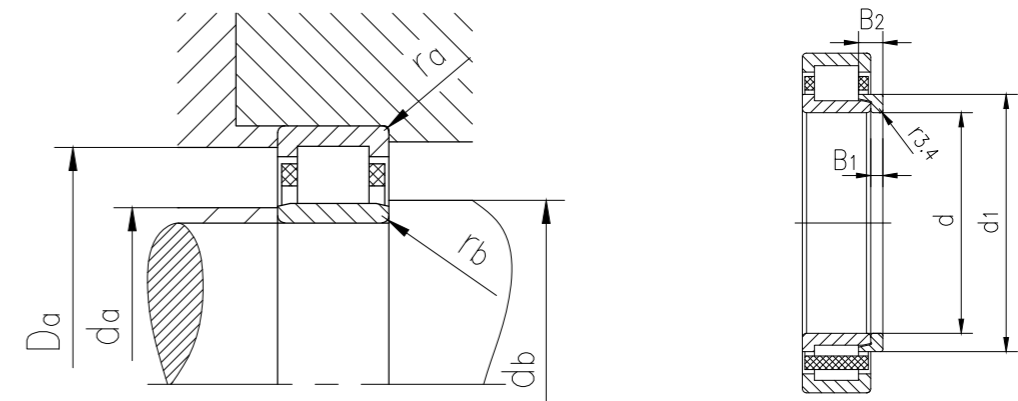
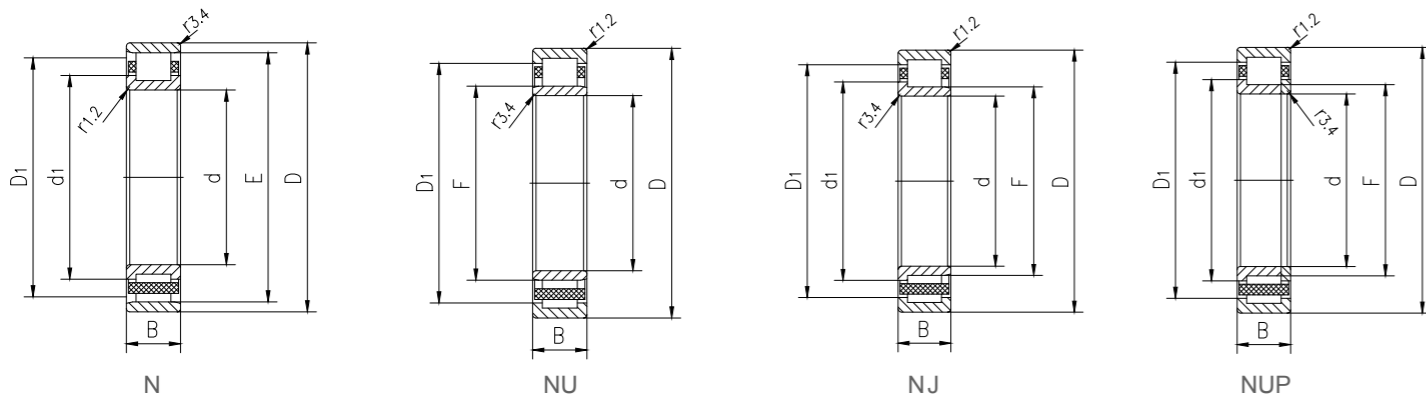


Suffixes of available designs

Suffix	Meaning
A	Deviating or modified internal design
CV	Modified internal design, full complement roller set
EC	Optimized internal design incorporating more and/or larger rollers and with modified roller end / large contact
ADB	Modified internal design and seal (for NNF 50 series)
B	Improved seal and grease
DA	Modified internal design and seal (for 3194** series)
K	Tapered bore, taper 1:12
N	Snap ring groove in the outer ring
NR	Snap ring groove in the outer ring, with associated snap ring
N1	One locating slot (notch) in one outer ring side face
N2	Two locating slots (notches) in one outer ring side face, 180° apart
-2LS	Contact seal, PUR, on both sides
FR	Pin-type steel cage, pierced rollers
J	Stamped steel cage, roller centred
JA	Sheet steel cage, outer ring centred
JB	Sheet steel cage, inner ring centred
L	Machined light alloy cage, roller centred
LA	Machined light alloy cage, outer ring centred
LB	Machined light alloy cage, inner ring centred
LL	Machined light alloy cage, window-type, inner or outer ring centred (depending on bearing design)
M	Machined brass cage, roller centred
MA(S)	Machined brass cage, outer ring centred. The S indicates a lubrication groove in the guiding surface.
MB	Machined brass cage, inner ring centred
MH	Machined brass cage, inner ring raceway centred
ML	Machined brass cage, window-type, inner or outer ring centred (depending on bearing design)
MP	Machined brass cage, window-type, inner or outer ring centred (depending on bearing size)
MR	Machined brass cage, window-type, roller centred
P	Glass fibre reinforced PA66 cage, roller centred
PA	Glass fibre reinforced PA66 cage, outer ring centred
PH	Glass fibre reinforced PEEK cage, roller centred

Suffix	Meaning
PHA	Glass fibre reinforced PEEK cage, outer ring centred
V	Full complement of rollers (no cage)
VH	Full complement of rollers (no cage), self-retaining
HA1	Case-hardened inner and outer rings
HA2	Case-hardened outer ring
HA3	Case-hardened inner ring
HB1	Bainite-hardened inner and outer rings
HB3	Bainite-hardened inner ring
HN1	Inner and outer rings with special surface heat treatment
L4B	Bearing rings and rollers black oxidized
L5B	Rollers black oxidized
L7B	Inner ring and rollers black oxidized
CN	Normal radial internal clearance; only used together with an additional letter that identifies a
C2	Radial internal clearance smaller than Normal
C3	Radial internal clearance greater than Normal
C4	Radial internal clearance greater than C3
C5	Radial internal clearance greater than C4
DR	Set of two matched bearings
TR	Set of three matched bearings
QR	Set of four matched bearings
S1	Bearing rings heat stabilized for operating temperatures ≤ 200 °C (390 °F)
S2	Bearing rings heat stabilized for operating temperatures ≤ 250 °C (480 °F)
W33	Annular groove and three lubrication holes in the outer ring
PEX	KMR Explorer bearing, used only when same-sized conventional and KMR Explorer bearings are available
VA301	Bearing for railway vehicle traction motors
VA305	VA301 + special inspection routines
VA350	Bearing for railway axleboxes
VA380	Bearing for railway axleboxes in accordance with EN 12080, class 1
VA3091	VA301 + external surfaces of the outer ring are coated with aluminium oxide
VC025	Bearing with special wear-resistant raceways for applications in heavily contaminated environments
VE901	Modified internal design
VQ015	Inner ring with crowned raceway for increased permissible misalignment

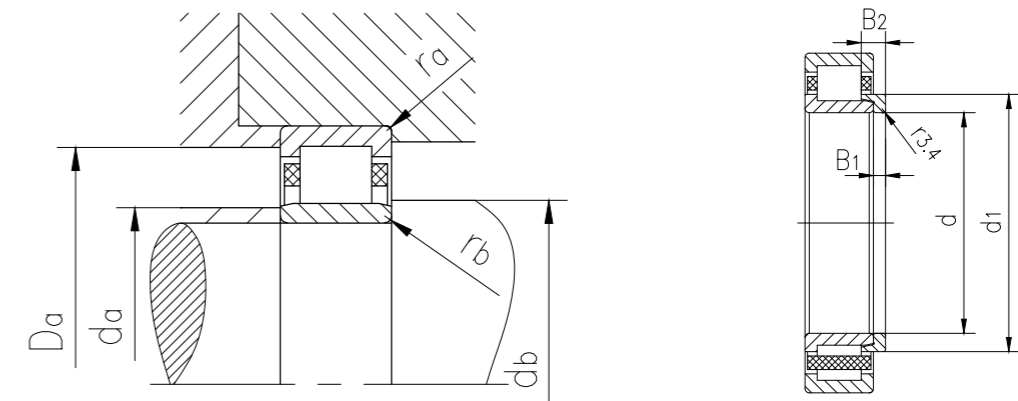
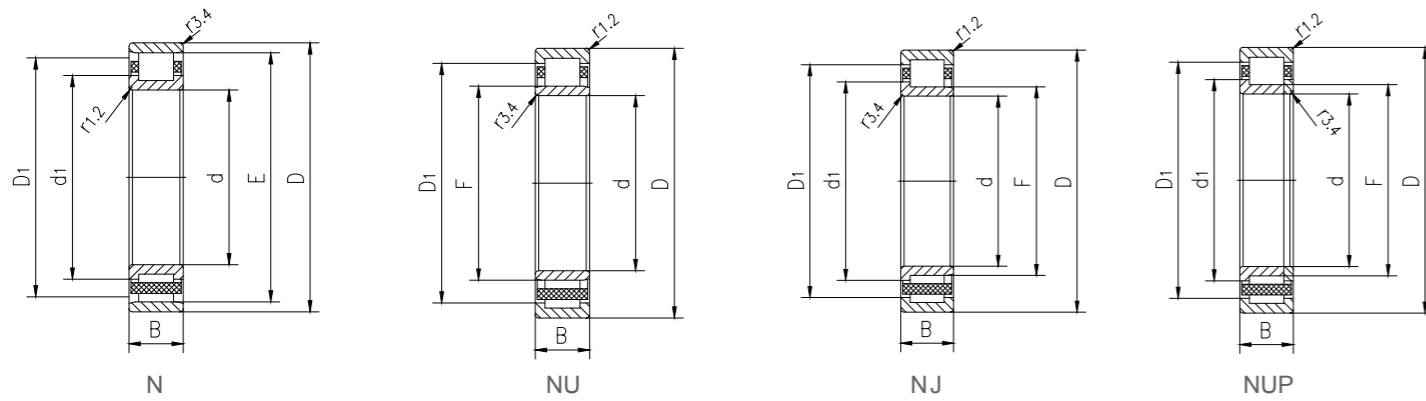
Single row cylindrical roller bearings



Type			Main dimensions			Dimensions							Shoulder and chamfer dimensions						
Bearings with standard cage	Optional Standard Cage	Corner ring	d	D	B	d ₁	D ₁	F, E	r _{1.2} min.	r _{3.4} min.	s max.	B ₁	B ₂	d _a min.	d _a max.	d _b , D _a min.	D _a max.	r _a max.	r _b max.
			mm			mm							mm						
N210ECP	M	-	50	90	20	64	-	81.5	1.1	1.1	1.5	-	-	57	79	83	84	1	1
NJ210ECP	J,M,ML,PH	-	50	90	20	64	77.4	59.5	1.1	1.1	1.5	-	-	57	57.5	66	82.4	1	-
NUP210ECP	J,M,ML,PH	-	50	90	20	64	77.4	59.5	1.1	1.1	-	-	-	57	-	66	82.4	1	-
NU2210ECP	J,M,ML,PH	-	50	90	23	-	77.4	59.5	1.1	1.1	1.5	-	-	57	57.5	61	82.4	1	1
NJ2210ECP	J,M,ML,PH	-	50	90	23	64	77.4	59.5	1.1	1.1	1.5	-	-	57	57.5	66	82.4	1	-
NUP2210ECP	J,M,ML,PH	-	50	90	23	64	77.4	59.5	1.1	1.1	-	-	-	57	-	66	82.4	1	-
N310ECP	-	-	50	110	27	71.2	-	97	2	2	1.9	-	-	60	95	99	101	2	2
NU310ECP	J,M,ML,PH	HJ 310 EC	50	110	27	-	91.4	65	2	2	1.9	8	13	60	63	67	99.6	2	2
NJ310ECP	J,M,ML,PH	HJ 310 EC	50	110	27	71.2	91.4	65	2	2	1.9	8	13	60	63	73	99.6	2	-
NUP310ECP	J,M,ML,PH	-	50	110	27	71.2	91.4	65	2	2	-	-	-	60	-	73	99.6	2	-
NJ2310ECP	ML,PH	-	50	110	40	71.2	91.4	65	2	2	3.4	-	-	60	63	73	99.6	2	-
NU2310ECP	ML,PH	-	50	110	40	-	91.4	65	2	2	3.4	-	-	60	63	67	99.6	2	2
NUP2310ECP	ML,PH	-	50	110	40	71.2	91.4	65	2	2	-	-	-	60	-	73	99.6	2	-
NU410	-	HJ 410	50	130	31	-	101.6	70.8	2.1	2.1	2.6	9	15	64	68	73	116	2	2
NJ410	-	HJ 410	50	130	31	78.8	101.6	70.8	2.1	2.1	2.6	9	15	64	68	81	116	2	-
NU1011ECP	ML	-	55	90	18	-	79	64.5	1.1	1	0.5	-	-	59.7	63	66	83	1	1
NJ1011ECP	ML	-	55	90	18	68	79	64.5	1.1	1	0.5	-	-	60	63	70	83	2	-
N211ECP	-	-	55	100	21	70.8	-	90	1.5	1.1	1	-	-	63	88	92	93	1.5	1
NU211ECP	J,M,ML	HJ 211 EC	55	100	21	-	85.6	66	1.5	1.1	1	6	9.5	62	64	68	91.4	1.5	1
NJ211ECP	J,M,ML	HJ 211 EC	55	100	21	70.8	85.6	66	1.5	1.1	1	6	9.5	63	64	73	91.4	1.5	-
NUP211ECP	J,M,ML	-	55	100	21	70.8	85.6	66	1.5	1.1	-	-	-	63	-	73	91.4	1.5	-
NU2211ECP	J,M,ML,PH	HJ 2211 EC	55	100	25	-	85.6	66	1.5	1.1	1.5	6	10	62	64	68	91.4	1.5	1
NJ2211ECP	J,M,ML,PH	HJ 2211 EC	55	100	25	70.8	85.6	66	1.5	1.1	1.5	6	10	63	64	73	91.4	1	-
NUP2211ECP	J,M,ML,PH	-	55	100	25	70.8	85.6	66	1.5	1.1	-	-	-	63	-	73	91.4	1.5	-
N311ECP	M	-	55	120	29	77.5	-	106.5	2	2	2	-	-	65	104	109	111	2	2
NU311ECP	J,M,ML	HJ 311 EC	55	120	29	-	100.3	70.5	2	2	2	9	14	65	68	73	109.2	2	2
NJ311ECP	J,M,ML	HJ 311 EC	55	120	29	77.5	100.3	70.5	2	2	2	9	14	65	68	80	109.2	2	-
NUP311ECP	M,M,ML	-	55	120	29	77.5	100.3	70.5	2	2	-	-	-	65	-	80	109.2	2	-
NJ2311ECP	PHPH	HJ 2311 EC	55	120	43	77.5	100.3	70.5	2	2	3.5	9	16	65	68	80	109.2	2	-
NU2311ECP	PHPH	HJ 2311 EC	55	120	43	-	100.3	70.5	2	2	3.5	9	16	65	68	73	109.2	2	2
NUP2311ECP	PHPH	-	55	120	43	77.5	100.3	70.5	2	2	-	-	-	65	-	80	109.2	2	-
NU411	-	-	55	140	33	-	109.45	77.2	2.1	2.1	2.6	-	-	69	74	79	126	2	2
NJ411	-	-	55	140	33	85.2	109.45	77.2	2.1	2.1	2.6	-	-	69	74	88	126	2	-
NU1012ML	-	-	60	95	18	-	81.8	69.5	1.1	1	2.9	-	-	64.6	68	71	88	1	1
N212ECP	-	-	60	110	22	77.5	-	100	1.5	1.5	1.4	-	-	68	98	102	103	1.5	1.5
NU212ECP	M,M,ML	HJ 212 EC	60	110	22	-	95	72	1.5	1.5	1.4	6	10	68	70	74	101	1.5	1.5
NJ212ECP	M,M,ML	HJ 212 EC	60	110	22	77.5	95	72	1.5	1.5	1.4	6	10	68	70	80	101	1.5	-

Type			Weight	Weight of corner ring	Basic load rating		Fatigue load limit P _u	Rated speed reference speed	Maximum speed	Calculate the coefficient k _r
Bearings with standard cage	Optional Standard Cage	Corner ring			Dynamic C	Static C ₀				
			-			kg	kg	kN		r/min
N210ECP	M	-	0.48	-	77.175	72.975	9.24	8925	9450	0.12
NJ210ECP	J,M,ML,PH	-	0.49	-	77.175	72.975	9.24	8925	9450	0.15
NUP210ECP	J,M,ML,PH	-	0.5	-	77.175	72.975	9.24	8925	9450	0.15
NU2210ECP	J,M,ML,PH	-	0.56	-	94.5	92.4	11.97	8925	9450	0.2
NJ2210ECP	J,M,ML,PH	-	0.57	-	94.5	92.4	11.97	8925	9450	0.2
NUP2210ECP	J,M,ML,PH	-	0.59	-	94.5	92.4	11.97	8925	9450	0.2
N310ECP	-	-	1.1	-	133.35	117.6	15.75	7035	8400	0.12
NU310ECP	J,M,ML,PH	HJ 310 EC	1.1	0.15	133.35	117.6	15.75	7035	8400	0.15
NJ310ECP	J,M,ML,PH	HJ 310 EC	1.15	0.15	133.35	117.6	15.75	7035	8400	0.15
NUP310ECP	J,M,ML,PH	-	1.15	-	133.35	117.6	15.75	7035	8400	0.15
NJ2310ECP	ML,PH	-	1.75	-	195.3	195.3	25.725	7035	8400	0.25
NU2310ECP	ML,PH	-	1.75	-	195.3	195.3	25.725	7035	8400	0.25
NUP2310ECP	ML,PH	-	1.75	-	195.3	195.3	25.725	7035	8400	0.25
NU410	-	HJ 410	2	0.15	136.5	133.35	17.43	6300	7350	0.15
NJ410	-	HJ 410	2.05	0.15	136.5	133.35	17.43	6300	7350	0.15
NU1011ECP	ML	-	0.39	-	60.06	72.975	8.715	8925	8925	0.1
NJ1011ECP	ML	-	0.42	-	60.06	72.975	8.715	8925	8925	0.1
N211ECP	-	-	0.65	-	101.325	99.75	12.81	7875	8400	0.12
NU211ECP	J,M,ML	HJ 211 EC	0.66	0.083	101.325	99.75	12.81	7875	8400	0.15
NJ211ECP	J,M,ML	HJ 211 EC	0.67	0.083	101.325	99.75	12.81	7875	8400	0.15
NUP211ECP	J,M,ML	-	0.68	-	101.325	99.75	12.81	7875	8400	0.15
NU2211ECP	J,M,ML,PH	HJ 2211 EC	0.79	0.085	119.7	123.9	16.065	7875	8400	0.2
NJ2211ECP	J,M,ML,PH	HJ 2211 EC	0.81	0.085	119.7	123.9	16.065	7875	8400	0.2
NUP2211ECP	J,M,ML,PH	-	0.82	-	119.7	123.9	16.065	7875	8400	0.2
N311ECP	M	-	1.45	-	163.8	150.15	19.53	6300	7350	0.12
NU311ECP	J,M,ML	HJ 311 EC	1.45	0.19	163.8	150.15	19.53	6300	7350	0.15
NJ311ECP	J,M,ML	HJ 311 EC	1.5	0.19	163.8	150.15	19.53	6300	7350	0.15
NUP311ECP	M,M,ML	-	1.5	-	163.8	150.15	19.53	6300	7350	0.15
NJ2311ECP	PHPH	HJ 2311 EC	2.25	0.19	243.6	243.6	32.025	6300	7350	0.25
NU2311ECP	PHPH	HJ 2311 EC	2.25	0.19	243.6	243.6	32.025	6300	7350	0.25
NUP2311ECP	PHPH	-	2.3	-	243.6	243.6	32.025	6300	7350	0.25
NU411	-	-	2.5	-	149.1	147	19.53	5880	6615	0.15
NJ411	-	-	2.55	-	149.1	147	19.53	5880	6615	0.15
NU1012ML	-	-	0.5	-	39.27	46.2	5.565	8400	13650	0.15
N212ECP	-	-	0.79	-	113.4	107.1	14.07	7035	7875	0.12
NU212ECP	M,M,ML	HJ 212 EC	0.8	0.1	113.4	107.1	14.07	7035	7875	0.15
NJ212ECP	M,M,ML	HJ 212 EC	0.82	0.1	113.4	107.1	14.07	7035	7875	0.15

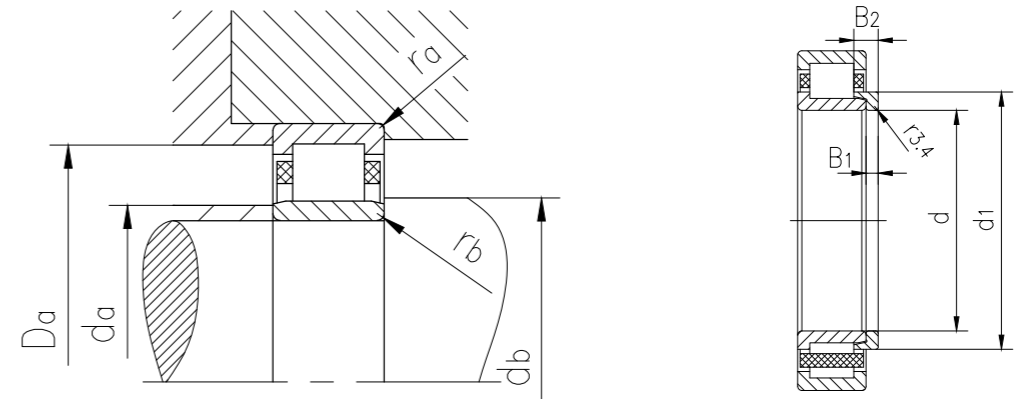
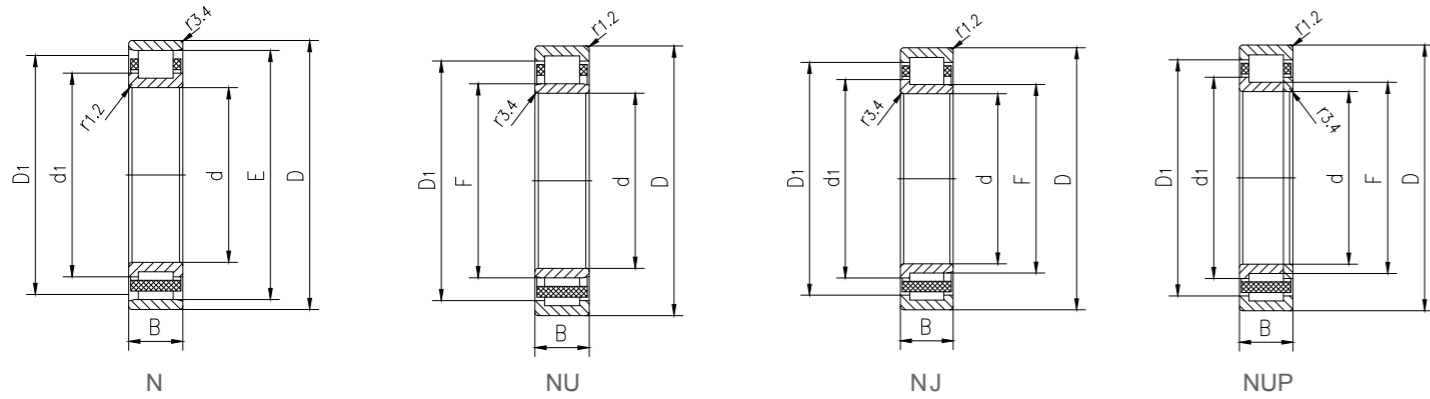
Single row cylindrical roller bearings



Type			Main dimensions			Dimensions							Shoulder and chamfer dimensions						
Bearings with standard cage	Optional Standard Cage	Corner ring	d	D	B	d ₁	D ₁	F, E	r _{1,2} min.	r _{3,4} min.	s max.	B ₁	B ₂	d _a min.	d _a max.	d _b , D _a min.	D _a max.	r _a max.	r _b max.
			mm			mm							mm						
NUP212ECP	M,M,ML	-	60	110	22	77.5	95	72	1.5	1.5	-	-	-	68	-	80	101	1.5	-
NU2212ECP	M,M,ML,PH	HJ 212 EC	60	110	28	-	95	72	1.5	1.5	1.4	6	10	68	70	74	101	1.5	1.5
NJ2212ECP	M,M,ML,PH	HJ 212 EC	60	110	28	77.5	95	72	1.5	1.5	1.4	6	10	68	70	80	101	1.5	-
NUP2212ECP	M,M,ML,PH	-	60	110	28	77.5	95	72	1.5	1.5	-	-	-	68	-	80	101	1.5	-
N312ECP	MM	-	60	130	31	84.3	-	115	2.1	2.1	2.1	-	-	72	113	118	119	2	2
NU312ECP	M,M,ML,PH	HJ 312 EC	60	130	31	-	108.5	77	2.1	2.1	2.1	9	15	72	74	79	118.1	2	2
NJ312ECP	M,M,ML,PH	HJ 312 EC	60	130	31	84.3	108.5	77	2.1	2.1	2.1	9	15	72	74	87	118.1	2	-
NUP312ECP	M,M,ML,PH	-	60	130	31	84.3	108.5	77	2.1	2.1	-	-	-	72	-	87	118.1	2	-
NU2312ECP	ML,ML,PH	HJ 2312 EC	60	130	46	-	108.5	77	2.1	2.1	3.6	9	16	72	74	79	118.1	2	2
NJ2312ECP	ML,ML,PH	HJ 2312 EC	60	130	46	84.3	108.5	77	2.1	2.1	3.6	9	16	72	74	87	118.1	2	-
NUP2312ECP	ML,ML,PH	-	60	130	46	84.3	108.5	77	2.1	2.1	-	-	-	72	-	87	118.1	2	-
NU412	-	-	60	150	35	-	118.5	83	2.1	2.1	2.5	-	-	74	80	85	136	2	2
NJ412	-	-	60	150	35	91.8	118.5	83	2.1	2.1	2.5	-	-	74	80	94	136	2	-
NU1013ML	-	-	65	100	18	-	86.6	74.5	1.1	1	2.9	-	-	69.6	72	76	94	1	1
NU1013ECP	-	-	65	100	18	-	88.5	74	1.1	1	1	-	-	69.6	72	76	94	1	1
NU213ECP	M,M,ML,PH	HJ 213 EC	65	120	23	-	103.2	78.5	1.5	1.5	1.4	6	10	74	76	81	110.6	1.5	1.5
N213ECP	-	-	65	120	23	84.4	-	108.5	1.5	1.5	1.4	-	-	74	106	111	112	1.5	1.5
NJ213ECP	M,M,ML,PH	HJ 213 EC	65	120	23	84.4	103.2	78.5	1.5	1.5	1.4	6	10	74	76	87	110.6	1.5	-
NUP213ECP	M,M,ML,PH	-	65	120	23	84.4	103.2	78.5	1.5	1.5	-	-	-	76	-	87	110.6	1.5	-
NU2213ECP	ML,ML,PH	HJ 2213 EC	65	120	31	-	103.2	78.5	1.5	1.5	1.9	6	11	74	76	81	110.6	1.5	1.5
NJ2213ECP	ML,ML,PH	HJ 2213 EC	65	120	31	84.4	103.2	78.5	1.5	1.5	1.9	6	11	74	76	87	110.6	1.5	-
NUP2213ECP	ML,ML,PH	-	65	120	31	84.4	103.2	78.5	1.5	1.5	-	-	-	74	-	87	110.6	1.5	-
N313ECP	-	-	65	140	33	90.5	-	124.5	2.1	2.1	2.2	-	-	77	122	127	129	2	2
NU313ECP	M,M,ML,PH	HJ 313 EC	65	140	33	-	117.4	82.5	2.1	2.1	2.2	10	16	77	80	85	127.8	2	2
NJ313ECP	M,M,ML,PH	HJ 313 EC	65	140	33	90.5	117.4	82.5	2.1	2.1	2.2	10	16	77	80	93	127.8	2	-
NUP313ECP	J,M,ML,PH	-	65	140	33	90.5	117.4	82.5	2.1	2.1	-	-	-	77	-	93	127.8	2	-
NU2313ECP	ML,PH	HJ 2313 EC	65	140	48	-	117.4	82.5	2.1	2.1	4.7	10	18	77	80	85	127.8	2	2
NJ2313ECP	ML,PH	HJ 2313 EC	65	140	48	90.5	117.4	82.5	2.1	2.1	4.7	10	18	77	80	93	127.8	2	-
NUP2313ECP	ML,PH	-	65	140	48	90.5	117.4	82.5	2.1	2.1	-	-	-	77	-	93	127.8	2	-
NU413	-	HJ 413	65	160	37	-	126.85	89.3	2.1	2.1	2.6	11	18	78	86	91	146	2	2
NJ413	-	HJ 413	65	160	37	98.5	126.85	89.3	2.1	2.1	2.6	11	18	78	86	101	146	2	-
NU1014ML	-	-	70	110	20	-	95.7	80	1.1	1	3	-	-	74.6	78	82	104	1	1
NU1014ECP	-	HJ 1014 EC	70	110	20	-	97.55	79.5	1.1	1	1.3	5	10	74.6	78	82	104	1	1
N214ECP	M	-	70	125	24	89.4	-	113.5	1.5	1.5	1.2	-	-	79	111	116	117	1.5	1.5
NU214ECP	J,M,ML,PH	HJ 214 EC	70	125	24	-	108.3	83.5	1.5	1.5	1.2	7	11	79	81	86	115.4	1.5	1.5
NJ214ECP	J,M,ML,PH	HJ 214 EC	70	125	24	89.4	108.3	83.5	1.5	1.5	1.2	7	11	79	81	92	115.4	1.5	-
NUP214ECP	J,M,ML,PH	-	70	125	24	89.4	108.3	83.5	1.5	1.5	-	-	-	79	-	92	115.4	1.5	-

Type			Weight	Weight of corner ring	Basic load rating		Fatigue load limit P _u	Rated speed reference speed	Maximum speed	Calculate the coefficient k _r
Bearings with standard cage	Optional Standard Cage	Corner ring			Dynamic C	Static C ₀				
						kg	kg	kN		r/min
NUP212ECP	M,M,ML	-	0.86	-	113.4	107.1	14.07	7035	7875	0.15
NU2212ECP	M,M,ML,PH	HJ 212 EC	1.05	0.1	153.3	160.65	21	7035	7875	0.2
NJ2212ECP	M,M,ML,PH	HJ 212 EC	1.1	0.1	153.3	160.65	21	7035	7875	0.2
NUP2212ECP	M,M,ML,PH	-	1.1	-	153.3	160.65	21	7035	7875	0.2
N312ECP	MM	-	1.75	-	181.65	168	22.26	5880	7035	0.12
NU312ECP	M,M,ML,PH	HJ 312 EC	1.75	0.23	181.65	168	22.26	5880	7035	0.15
NJ312ECP	M,M,ML,PH	HJ 312 EC	1.85	0.23	181.65	168	22.26	5880	7035	0.15
NUP312ECP	M,M,ML,PH	-	1.9	-	181.65	168	22.26	5880	7035	0.15
NU2312ECP	ML,ML,PH	HJ 2312 EC	2.75	0.24	273	278.25	36.225	5880	7035	0.25
NJ2312ECP	ML,ML,PH	HJ 2312 EC	2.8	0.24	273	278.25	36.225	5880	7035	0.25
NUP2312ECP	ML,ML,PH	-	2.85	-	273	278.25	36.225	5880	7035	0.25
NU412	-	-	3	-	176.4	181.65	23.1	5250	6300	0.15
NJ412	-	-	3.05	-	176.4	181.65	23.1	5250	6300	0.15
NU1013ML	-	-	0.51	-	39.9	48.825	5.775	7875	12600	0.15
NU1013ECP	-	-	0.45	-	65.835	85.575	10.29	7875	7875	0.1
NU213ECP	M,M,ML,PH	HJ 213 EC	1	0.12	128.1	123.9	16.38	6615	7035	0.15
N213ECP	-	-	1.05	-	128.1	123.9	16.38	6615	7035	0.12
NJ213ECP	M,M,ML,PH	HJ 213 EC	1.05	0.12	128.1	123.9	16.38	6615	7035	0.15
NUP213ECP	M,M,ML,PH	-	1.05	-	128.1	123.9	16.38	6615	7035	0.15
NU2213ECP	ML,ML,PH	HJ 2213 EC	1.4	0.12	178.5	189	25.2	6615	7035	0.2
NJ2213ECP	ML,ML,PH	HJ 2213 EC	1.45	0.12	178.5	189	25.2	6615	7035	0.2
NUP2213ECP	ML,ML,PH	-	1.45	-	178.5	189	25.2	6615	7035	0.2
N313ECP	-	-	2.2	-	222.6	205.8	26.775	5565	6300	0.12
NU313ECP	M,M,ML,PH	HJ 313 EC	2.2	0.27	222.6	205.8	26.775	5565	6300	0.15
NJ313ECP	M,M,ML,PH	HJ 313 EC	2.3	0.27	222.6	205.8	26.775	5565	6300	0.15
NUP313ECP	J,M,ML,PH	-	2.35	-	222.6	205.8	26.775	5565	6300	0.15
NU2313ECP	ML,PH	HJ 2313 EC	3.2	0.3	299.25	304.5	39.9	5565	6300	0.25
NJ2313ECP	ML,PH	HJ 2313 EC	3.35	0.3	299.25	304.5	39.9	5565	6300	0.25
NUP2313ECP	ML,PH	-	3.45	-	299.25	304.5	39.9	5565	6300	0.25
NU413	-	HJ 413	3.55	0.42	192.15	199.5	25.2	5040	5880	0.15
NJ413	-	HJ 413	3.65	0.42	192.15	199.5	25.2	5040	5880	0.15
NU1014ML	-	-	0.7	-	58.905	70.35	8.4	7350	11550	0.15
NU1014ECP	-	HJ 1014 EC	0.61	0.082	80.325	97.65	12.6	7350	7350	0.1
N214ECP	M	-	1.1	-	143.85	143.85	18.9	6300	6615	0.12
NU214ECP	J,M,ML,PH	HJ 214 EC	1.15	0.15	143.85	143.85	18.9	6300	6615	0.15
NJ214ECP	J,M,ML,PH	HJ 214 EC	1.2	0.15	143.85	143.85	18.9	6300	6615	0.15
NUP214ECP	J,M,ML,PH	-	1.2	-	143.85	143.85	18.9	6300	6615	0.15

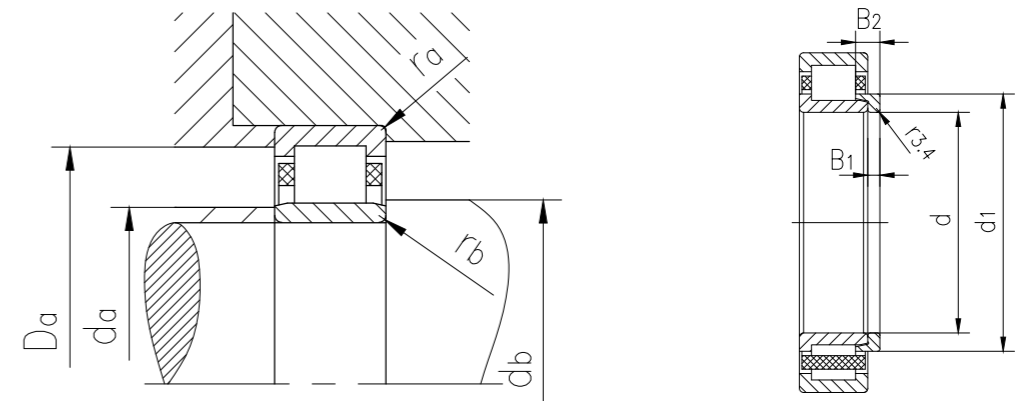
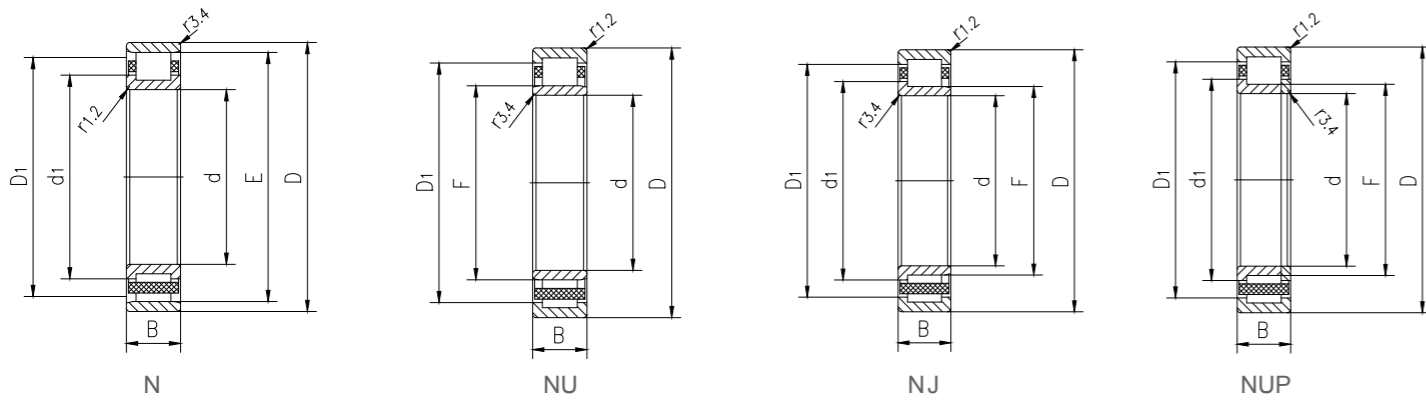
Single row cylindrical roller bearings



Type			Main dimensions			Dimensions							Shoulder and chamfer dimensions						
Bearings with standard cage	Optional Standard Cage	Corner ring	d	D	B	d ₁	D ₁	F, E	r _{1.2} min.	r _{3.4} min.	s max.	B ₁	B ₂	d _a min.	d _a max.	d _b min.	D _a max.	r _a max.	r _b max.
			mm			mm							mm						
NJ2214ECP	J,M,ML,PH	HJ 2214 EC	70	125	31	89.4	108.2	83.5	1.5	1.5	1.7	7	12	79	81	92	115.4	1.5	-
NU2214ECP	J,M,ML,PH	HJ 2214 EC	70	125	31	-	108.2	83.5	1.5	1.5	1.7	7	12	79	81	86	115.4	1.5	1.5
NUP2214ECP	J,M,ML,PH	-	70	125	31	89.4	108.2	83.5	1.5	1.5	-	-	-	79	-	92	115.4	1.5	-
N314ECP	M	-	70	150	35	97.3	-	133	2.1	2.1	1.8	-	-	82	130	136	138	2	2
NJ314ECP	J,M,ML,PH	HJ 314 EC	70	150	35	-	125.6	89	2.1	2.1	1.8	10	16	82	86	92	137.5	2	2
NJ314ECP	J,M,ML,PH	HJ 314 EC	70	150	35	97.3	125.6	89	2.1	2.1	1.8	10	16	82	86	100	137.5	2	-
NUP314ECP	J,M,ML,PH	-	70	150	35	97.3	125.6	89	2.1	2.1	-	-	-	82	-	100	137.5	2	-
NU2314ECP	ML,PH	HJ 2314 EC	70	150	51	-	125.6	89	2.1	2.1	4.8	10	19	82	86	92	137.5	2	2
NJ2314ECP	ML,PH	HJ 2314 EC	70	150	51	97.3	125.6	89	2.1	2.1	4.8	10	19	82	86	100	137.5	2	-
NUP2314ECP	ML,PH	-	70	150	51	97.3	125.6	89	2.1	2.1	-	-	-	82	-	100	137.5	2	-
NU414MA	-	HJ 414	70	180	42	-	141	100	3	3	3.5	12	20	87	97	102	164	2.5	2.5
NJ414MA	-	HJ 414	70	180	42	110	141	100	3	3	3.5	12	20	87	97	113	164	2.5	-
NU1015ML	M	-	75	115	20	-	100.4	85	1.1	1	3	-	-	80	83	87	109	1	1
N215ECP	-	-	75	130	25	94.3	-	118.5	1.5	1.5	1.2	-	-	84	116	121	122	1.5	1.5
NU215ECP	J,M,ML,PH	HJ 215 EC	75	130	25	-	113.3	88.5	1.5	1.5	1.2	7	11	84	86	91	121.5	1.5	1.5
NJ215ECP	J,M,ML,PH	HJ 215 EC	75	130	25	94.3	113.3	88.5	1.5	1.5	1.2	7	11	84	86	97	121.5	1.5	-
NUP215ECP	J,M,ML,PH	-	75	130	25	94.3	113.3	88.5	1.5	1.5	-	-	-	84	-	97	121.5	1.5	-
NJ2215ECP	J,ML,PH	-	75	130	31	94.3	113.2	88.5	1.5	1.5	1.7	-	-	84	86	97	121.5	1.5	-
NU2215ECP	J,ML,PH	-	75	130	31	-	113.2	88.5	1.5	1.5	1.7	-	-	84	86	91	121.5	1.5	1.5
NUP2215ECP	J,ML,PH	-	75	130	31	94.3	113.2	88.5	1.5	1.5	-	-	-	84	-	97	121.5	1.5	-
N315ECP	M	-	75	160	37	104	-	143	2.1	2.1	1.8	-	-	87	140	146	148	2	2
NU315ECP	J,M,ML,PH	HJ 315 EC	75	160	37	-	135	95	2.1	2.1	1.8	11	17	87	92	97	148	2	2
NJ315ECP	J,M,ML,PH	HJ 315 EC	75	160	37	104	135	95	2.1	2.1	1.8	11	17	87	92	107	148	2	-
NUP315ECP	J,M,ML,PH	-	75	160	37	104	135	95	2.1	2.1	-	-	-	87	-	107	148	2	-
NU2315ECP	J,ML	HJ 2315 EC	75	160	55	-	135	95	2.1	2.1	4.8	11	20	87	92	97	148	2	2
NJ2315ECP	J,ML	HJ 2315 EC	75	160	55	104	135	95	2.1	2.1	4.8	11	20	87	92	107	148	2	-
NUP2315ECP	J,ML	-	75	160	55	104	135	95	2.1	2.1	-	-	-	87	-	107	148	2	-
NU415	-	HJ 415	75	190	45	-	149.1	104.5	3	3	3.8	13	22	91	101	107	174	2.5	2.5
NJ415	-	HJ 415	75	190	45	116	149.1	104.5	3	3	3.8	13	22	91	101	119	174	2.5	-
NU1016	-	-	80	125	22	-	108.55	91.5	1.1	1	3.3	-	-	86	90	94	119	1	1
NJ1016ECML	M	-	80	125	22	96.2	111.6	91.5	1.1	1	1.5	-	-	86	90	99	119	1	-
N216ECP	-	-	80	140	26	101	-	127.3	2	2	1.4	-	-	90	125	130	131	2	2
NJ216ECP	J,M,ML,PH	HJ 216 EC	80	140	26	101	121.7	95.3	2	2	1.4	8	13	90	93	104	129.8	2	-
NU216ECP	J,M,ML,PH	HJ 216 EC	80	140	26	-	121.7	95.3	2	2	1.4	8	13	90	93	98	129.8	2	2
NUP216ECP	J,M,ML,PH	-	80	140	26	101	121.7	95.3	2	2	-	-	-	90	-	104	129.8	2	-
NU2216ECP	J,M,ML,PH	HJ 216 EC	80	140	33	-	121.7	95.3	2	2	1.4	8	13	90	93	98	129.8	2	2
NUP2216ECP	J,M,ML,PH	-	80	140	33	101	121.7	95.3	2	2	-	-	-	90	-	104	129.8	2	-

Type			Weight	Weight of corner ring	Basic load rating		Fatigue load limit	Rated speed reference speed	Maximum speed	Calculate the coefficient
Bearings with standard cage	Optional Standard Cage	Corner ring			Dynamic C	Static C ₀				
			-			kg	kg	kN		-
NJ2214ECP	J,M,ML,PH	HJ 2214 EC	1.5	0.15	189	202.65	26.775	6300	6615	0.2
NU2214ECP	J,M,ML,PH	HJ 2214 EC	1.5	0.15	189	202.65	26.775	6300	6615	0.2
NUP2214ECP	J,M,ML,PH	-	1.55	-	189	202.65	26.775	6300	6615	0.2
N314ECP	M	-	2.65	-	247.8	239.4	30.45	5040	5880	0.12
NJ314ECP	J,M,ML,PH	HJ 314 EC	2.7	0.32	247.8	239.4	30.45	5040	5880	0.15
NJ314ECP	J,M,ML,PH	HJ 314 EC	2.75	0.32	247.8	239.4	30.45	5040	5880	0.15
NUP314ECP	J,M,ML,PH	-	2.85	-	247.8	239.4	30.45	5040	5880	0.15
NU2314ECP	ML,PH	HJ 2314 EC	3.95	0.35	330.75	341.25	43.575	5040	5880	0.25
NJ2314ECP	ML,PH	HJ 2314 EC	4	0.35	330.75	341.25	43.575	5040	5880	0.25
NUP2314ECP	ML,PH	-	4.15	-	330.75	341.25	43.575	5040	5880	0.25
NU414MA	-	HJ 414	5.25	0.61	240.45	252	31.5	4515	5250	0.15
NJ414MA	-	HJ 414	5.45	0.61	240.45	252	31.5	4515	5250	0.15
NU1015ML	M	-	0.75	-	61.215	74.55	8.925	7035	10500	0.15
N215ECP	-	-	1.2	-	157.5	163.8	21.42	5880	6300	0.12
NU215ECP	J,M,ML,PH	HJ 215 EC	1.25	0.16	157.5	163.8	21.42	5880	6300	0.15
NJ215ECP	J,M,ML,PH	HJ 215 EC	1.3	0.16	157.5	163.8	21.42	5880	6300	0.15
NUP215ECP	J,M,ML,PH	-	1.3	-	157.5	163.8	21.42	5880	6300	0.15
NJ2215ECP	J,ML,PH	-	1.6	-	195.3	218.4	28.35	5880	6300	0.2
NU2215ECP	J,ML,PH	-	1.6	-	195.3	218.4	28.35	5880	6300	0.2
NUP2215ECP	J,ML,PH	-	1.6	-	195.3	218.4	28.35	5880	6300	0.2
N315ECP	M	-	3.3	-	294	278.25	35.175	4725	5565	0.12
NU315ECP	J,M,ML,PH	HJ 315 EC	3.3	0.39	294	278.25	35.175	4725	5565	0.15
NJ315ECP	J,M,ML,PH	HJ 315 EC	3.35	0.39	294	278.25	35.175	4725	5565	0.15
NUP315ECP	J,M,ML,PH	-	3.45	-	294	278.25	35.175	4725	5565	0.15
NU2315ECP	J,ML	HJ 2315 EC	4.8	0.42	399	420	52.5	4725	5565	0.25
NJ2315ECP	J,ML	HJ 2315 EC	5	0.42	399	420	52.5	4725	5565	0.25
NUP2315ECP	J,ML	-	5.1	-	399	420	52.5	4725	5565	0.25
NU415	-	HJ 415	6.2	0.71	277.2	294	35.7	4200	5040	0.15
NJ415	-	HJ 415	6.4	0.71	277.2	294	35.7	4200	5040	0.15
NU1016	-	-	0.88	-	67.62	81.9	10.29	6615	6615	0.1
NJ1016ECML	M	-	1.05	-	103.95	133.35	17.115	6300	9975	0.15
N216ECP	-	-	1.55	-	168	174.3	22.26	5565	5880	0.12
NJ216ECP	J,M,ML,PH	HJ 216 EC	1.55	0.21	168	174.3	22.26	5565	5880	0.15
NU216ECP	J,M,ML,PH	HJ 216 EC	1.55	0.21	168	174.3	22.26	5565	5880	0.15
NUP216ECP	J,M,ML,PH	-	1.55	-	168	174.3	22.26	5565	5880	0.15
NU2216ECP	J,M,ML,PH	HJ 216 EC	1.95	0.21	222.6	257.25	32.55	5565	5880	0.2
NUP2216ECP	J,M,ML,PH	-	2	-	222.6	257.25	32.55	5565	5880	0.2

Single row cylindrical roller bearings



Type			Main dimensions			Dimensions								Shoulder and chamfer dimensions					
Bearings with standard cage	Optional Standard Cage	Corner ring	d	D	B	d ₁	D ₁	F, E	r _{1.2} min.	r _{3.4} min.	s max.	B ₁	B ₂	d _a min.	d _a max.	d _b min.	D _a max.	r _a max.	r _b max.
			mm			mm								mm					
NJ2216ECP	J,M,ML,PH	HJ 216 EC	80	140	33	101	121.7	95.3	2	2	1.4	8	13	90	93	104	129.8	2	-
NU316ECP	J,M,ML,PH	HJ 316 EC	80	170	39	-	142.7	101	2.1	2.1	2.1	11	17	92	98	104	157.8	2	2
N316ECP	M	-	80	170	39	110	-	151	2.1	2.1	2.1	-	-	92	148	154	157	2	2
NJ316ECP	J,M,ML,PH	HJ 316 EC	80	170	39	110	142.7	101	2.1	2.1	2.1	11	17	92	98	113	157.8	2	-
NUP316ECP	J,M,ML,PH	-	80	170	39	110	142.7	101	2.1	2.1	-	-	-	92	-	113	157.8	2	-
NU2316ECP	M,ML	HJ 2316 EC	80	170	58	-	142.7	101	2.1	2.1	5.1	11	20	92	98	104	157.8	2	2
NJ2316ECP	M,ML	HJ 2316 EC	80	170	58	110	142.7	101	2.1	2.1	5.1	11	20	92	98	113	157.8	2	-
NUP2316ECP	M,ML	-	80	170	58	110	142.7	101	2.1	2.1	-	-	-	92	-	113	157.8	2	-
NU416	-	HJ 416	80	200	48	-	158.1	110	3	3	3.7	13	22	96	107	112	184	2.5	2.5
NJ416	-	HJ 416	80	200	48	122	158.1	110	3	3	3.7	13	22	96	107	125	184	2.5	-
NU1017ML	-	-	85	130	22	-	114	96.5	1.1	1	3.3	-	-	91	94	99	123	1	1
NJ1017ML	-	-	85	130	22	101	114	96.5	1.1	1	3.3	-	-	91	94	104	123	1	-
NUP1017ML	-	-	85	130	22	101	114	96.5	1.1	1	-	-	-	91	-	104	123	1	-
N217ECP	M	-	85	150	28	107	-	136.5	2	2	1.5	-	-	96	134	139	140	2	2
NJ217ECP	J,M,ML	HJ 217 EC	85	150	28	107	130.3	100.5	2	2	1.5	8	13	96	98	110	138.5	2	-
NU217ECP	J,M,ML	HJ 217 EC	85	150	28	-	130.3	100.5	2	2	-	-	-	96	-	110	138.5	2	2
NUP217ECP	J,M,ML	-	85	150	28	107	130.3	100.5	2	2	-	-	-	96	-	110	138.5	2	-
NU2217ECP	J,M,ML,PH	-	85	150	36	-	130.3	100.5	2	2	2	-	-	96	98	103	138.5	2	2
NJ2217ECP	J,M,ML,PH	-	85	150	36	107	130.3	100.5	2	2	2	-	-	96	98	110	138.5	2	-
NUP2217ECP	J,M,ML,PH	-	85	150	36	107	130.3	100.5	2	2	-	-	-	96	-	110	138.5	2	-
N317ECP	M	-	85	180	41	117	-	160	3	3	2.3	-	-	99	157	163	166	2.5	2.5
NU317ECP	J,M,ML,PH	HJ 317 EC	85	180	41	-	151.4	108	3	3	2.3	12	19	99	105	111	165.5	2.5	2.5
NJ317ECP	J,M,ML,PH	HJ 317 EC	85	180	41	117	151.4	108	3	3	2.3	12	19	99	105	120	165.5	2.5	-
NUP317ECP	J,M,ML,PH	-	85	180	41	117	151.4	108	3	3	-	-	-	99	-	120	165.5	2.5	-
NU2317ECP	J,M,ML	HJ 2317 EC	85	180	60	-	151.4	108	3	3	5.8	12	22	99	105	111	165.5	2.5	2.5
NJ2317ECP	J,M,ML	HJ 2317 EC	85	180	60	117	151.4	108	3	3	5.8	12	22	99	105	120	165.5	2.5	-
NUP2317ECP	J,M,ML	-	85	180	60	117	151.4	108	3	3	-	-	-	99	-	120	165.5	2.5	-
NU1018ML	M	-	90	140	24	-	122.1	103	1.5	1.1	3.5	-	-	96	101	106	133	1.5	1
NJ1018ML	M	-	90	140	24	108	122.1	103	1.5	1.1	3.5	-	-	96	101	111	133	1.5	-
N218ECP	M	-	90	160	30	114	-	145	2	2	1.8	-	-	101	142	148	149	2	2
NJ218ECP	J,M,ML	HJ 218 EC	90	160	30	114	138.45	107	2	2	1.8	9	14	101	104	117	149	2	-
NU218ECP	J,M,ML	HJ 218 EC	90	160	30	-	138.45	107	2	2	1.8	9	14	101	104	110	149	2	2
NUP218ECP	J,M,ML	-	90	160	30	114	138.45	107	2	2	-	-	-	101	-	117	149	2	-
NU2218ECP	J,M,ML	HJ 2218 EC	90	160	40	-	138.5	107	2	2	2.6	9	15	101	104	110	149	2	2
NJ2218ECP	J,M,ML	HJ 2218 EC	90	160	40	114	138.5	107	2	2	2.6	9	15	101	104	117	149	2	-
NUP2218ECP	J,M,ML	-	90	160	40	114	138.5	107	2	2	-	-	-	101	-	117	149	2	-
NU318ECP	J,M,ML	HJ 318 EC	90	190	43	-	160.3	113.5	3	3	2.5	12	19	104	110	116	175.3	2.5	2.5

Type			Weight	Weight of corner ring	Basic load rating		Fatigue load limit P _u	Rated speed reference speed	Maximum speed	Calculate the coefficient k _r
Bearings with standard cage	Optional Standard Cage	Corner ring			Dynamic C	Static C ₀				
			-			kg	kg	kN		-
NJ2216ECP	J,M,ML,PH	HJ 216 EC	2.05	0.21	222.6	257.25	32.55	5565	5880	0.2
NU316ECP	J,M,ML,PH	HJ 316 EC	3.85	0.44	315	304.5	37.8	4515	5250	0.15
N316ECP	M	-	3.9	-	315	304.5	37.8	4515	5250	0.12
NJ316ECP	J,M,ML,PH	HJ 316 EC	4	0.44	315	304.5	37.8	4515	5250	0.15
NUP316ECP	J,M,ML,PH	-	4.1	-	315	304.5	37.8	4515	5250	0.15
NU2316ECP	M,ML	HJ 2316 EC	5.75	0.48	435.75	462	57.75	4515	5250	0.25
NJ2316ECP	M,ML	HJ 2316 EC	5.95	0.48	435.75	462	57.75	4515	5250	0.25
NUP2316ECP	M,ML	-	6	-	435.75	462	57.75	4515	5250	0.25
NU416	-	HJ 416	7.25	0.8	318.15	336	40.95	3990	4725	0.15
NJ416	-	HJ 416	7.55	0.8	318.15	336	40.95	3990	4725	0.15
NU1017ML	-	-	1.05	-	71.61	90.825	11.34	6300	9450	0.15
NJ1017ML	-	-	1.1	-	71.61	90.825	11.34	6300	9450	0.15
NUP1017ML	-	-	1.1	-	71.61	90.825	11.34	6300	9450	0.15
N217ECP	M	-	1.9	-	199.5	210	26.25	5040	5565	0.12
NJ217ECP	J,M,ML	HJ 217 EC	1.9	0.24	199.5	210	26.25	5040	5565	0.15
NU217ECP	J,M,ML	HJ 217 EC	1.9	0.24	199.5	210	26.25	5040	5565	0.15
NUP217ECP	J,M,ML	-	1.9	-	199.5	210	26.25	5040	5565	0.15
NU2217ECP	J,M,ML,PH	-	2.5	-	262.5	294	36.225	5040	5565	0.2
NJ2217ECP	J,M,ML,PH	-	2.55	-	262.5	294	36.225	5040	5565	0.2
NUP2217ECP	J,M,ML,PH	-	2.6	-	262.5	294	36.225	5040	5565	0.2
N317ECP	M	-	4.55	-	357	351.75	43.575	4200	5040	0.12
NU317ECP	J,M,ML,PH	HJ 317 EC	4.65	0.55	357	351.75	43.575	4200	5040	0.15
NJ317ECP	J,M,ML,PH	HJ 317 EC	4.8	0.55	357	351.75	43.575	4200	5040	0.15
NUP317ECP	J,M,ML,PH	-	4.9	-	357	351.75	43.575	4200	5040	0.15
NU2317ECP	J,M,ML	HJ 2317 EC	6.85	0.59	477.75	514.5	63	4200	5040	0.25
NJ2317ECP	J,M,ML	HJ 2317 EC	7	0.59	477.75	514.5	63	4200	5040	0.25
NUP2317ECP	J,M,ML	-	7	-	477.75	514.5	63	4200	5040	0.25
NU1018ML	M	-	1.35	-	84.945	109.2	13.335	5880	8925	0.15
NJ1018ML	M	-	1.4	-	84.945	109.2	13.335	5880	8925	0.15
N218ECP	M	-	2.3	-	218.4	231	28.35	4725	5250	0.12
NJ218ECP	J,M,ML	HJ 218 EC	2.3	0.31	218.4	231	28.35	4725	5250	0.15
NU218ECP	J,M,ML	HJ 218 EC	2.3	0.31	218.4	231	28.35	4725	5250	0.15
NUP218ECP	J,M,ML	-	2.45	-	218.4	231	28.35	4725	5250	0.15
NU2218ECP	J,M,ML	HJ 2218 EC	3.15	0.31	294	330.75	40.95	4725	5250	0.2
NJ2218ECP	J,M,ML	HJ 2218 EC	3.25	0.31	294	330.75	40.95	4725	5250	0.2
NUP2218ECP	J,M,ML	-	3.3	-	294	330.75	40.95	4725	5250	0.2
NU318ECP	J,M,ML	HJ 318 EC	5.25	0.62	383.25	378	45.15	3990	4725	0.15