

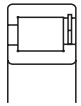
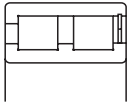
FULL-COMPLEMENT CYLINDRICAL ROLLER BEARINGS SINGLE-ROW(NCF), DOUBLE-ROW(NNCF)

Design, Types, and Features

Cageless, full-complement cylindrical roller bearings have the maximum possible number of rollers and can sustain much heavier loads than cylindrical roller bearings of the same size with cages. On the other hand, high-speed capability is inferior to the bearings with cages.

The open-type single- and double-row bearings are mostly used in general industrial applications at low speed and under heavy load, and the shielded-type double-row bearings are often used in crane sheaves.

Table 1 Features of Various Types

Figure	Type	Design and Features
	NCF	The outer and inner rings and rollers are non-separable since a retaining snap ring is installed at the side opposite the outer ring rib. They can sustain axial loads in only one direction.
	NNCF	NNCF is a double-row version of NCF. They can sustain heavy radial loads.

Tolerances and Running AccuracyTable 7.2 (Pages A128 to A131)

Single-Row
Double-Row

Recommended Fits

Single-Row
Double-Row

Inner Ring RotationTable 8.3 (Page A164)
Table 8.5 (Page A165)

Outer Ring RotationTable 2 below

Table 2 Fits and Internal Clearances for Full-Complement Cylindrical Roller Bearings

Operating Conditions		Fitting between Inner Ring and Shaft	Fitting between Outer Ring and Housing Bore	Recommended Internal Clearance
Outer Ring Rotation	Thin walled housings and heavy loads	g6 or h6	P7	C 3
	Normal to heavy loads	g6 or h6	N7	C 3
	Light or fluctuating loads	g6 or h6	M7	CN

Permissible Misalignment

The permissible misalignment of full-complement single-row cylindrical roller bearings is generally 0.0006 radian (2') under normal load. For double-row bearings, nearly on misalignment is allowed.

FULL-COMPLEMENT CYLINDRICAL ROLLER BEARINGS FOR SHEAVES

DESIGN, TYPES, AND FEATURES

Cylindrical Roller Bearings for sheaves are specially designed thin-walled, broad-width, full-complement type double-row cylindrical roller bearings, but they are widely used also for general industrial machines running at low speed and under heavy loads. There are several series as shown in Table 1.

Table 1 Series of Cylindrical Roller Bearings for Sheaves

Bearing Type		Fixed-End	Free-End
Open Type	Without Snap Ring	RS-48E4 RS-49E4	RSF-48E4 RSF-49E4
	Shielded Type	Without Snap Ring With Snap Ring	RS-50 RS-50NR

Since all are non-separable type bearings, the inner and outer rings cannot be separated, but the RSF type can be used as a free-end bearing. In this case, the permissible axial displacement is listed in the bearing tables.

Since cylindrical roller bearings for sheaves are a double-row, full-complement type, they can withstand heavy shock loads and moments and have sufficient axial load capacity for use in sheaves.

Since the shielded type is a kind of bearing unit, the number of parts surrounding the bearing can be reduced, so it allows for a simple compact design.

The surface of these bearings is treated for rust prevention.

Table 2 Features of Various Types

Figure	Type	Design and Features
	RS-48E4 RS-49E4	Double-row outer ring with center rib, two single-row inner rings with ribs. The outer and inner rings and rollers are non-separable since there are two retaining snap rings at the sides of the outer ring. They can sustain an axial load in either direction so they can be used as fixed-end bearings. An oil groove and holes are provided at the center of the outer ring.
	RSF-48E4 RSF-49E4	Double-row outer ring without ribs, double-row inner ring with three ribs. The outer and inner rings and rollers are non-separable since there is a retaining snap ring at the middle of the outer ring. They can be used as free-end bearings. The permissible axial movement is listed in the dimensional tables. An oil groove and holes are provided at the center of the outer ring.
	RS-50 RS-50NR	Both sides shielded, double-row outer ring with center rib, two inner rings with ribs. They can sustain an axial load in either direction. They are prelubricated, but it is possible to replenish the grease through an oil groove and holes in parts mating with the inner rings. If there are snap rings at the outside of the outer ring, this type becomes RS-50NR. They are surface-treated for rust prevention.

TOLERANCES AND RUNNING ACCURACY..... Table 7.2 (Pages A128 to A131)

RECOMMENDED FITS AND INTERNAL CLEARANCES

When used with outer ring rotation for sheaves or wheels, the fit and radial internal clearance should conform to Table 3.

Table 3 Fits and Internal Clearances for Cylindrical Roller Bearings for Sheaves

Operating Conditions		Fitting between Inner Ring and Shaft	Fitting between Outer Ring and Housing Bore	Recommended Internal Clearance
Outer Ring Rotation	Thin walled housings and heavy loads	g6 or h6	P7	C3
	Normal to heavy loads	g6 or h6	N7	C3
	Light or fluctuating loads	g6 or h6	M7	CN

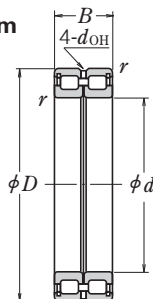
The fits listed in Tables 8.3 (Page A164) and 8.5 (Page A165) apply when they are used with inner ring rotation in general applications, and the internal clearance should conform to Table 4.

Table 4 Units : μm

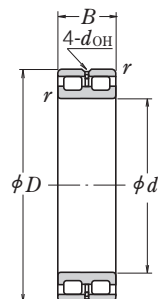
Nominal Bore Dia. <i>d</i> (mm)	Clearances			
	CN		C3	
over incl.	min.	max.	min.	max.
30 40	15	50	35	70
40 50	20	55	40	75
50 65	20	65	45	90
65 80	25	75	55	105
80 100	30	80	65	115
100 120	35	90	80	135
120 140	40	105	90	155
140 160	50	115	100	165
160 180	60	125	110	175
180 200	65	135	125	195
200 225	75	150	140	215
225 250	90	165	155	230
250 280	100	180	175	255
280 315	110	195	195	280
315 355	125	215	215	305
355 400	140	235	245	340
400 450	155	275	270	390
450 500	180	300	300	420

■ FULL-COMPLEMENT CYLINDRICAL ROLLER BEARINGS FOR SHEAVES

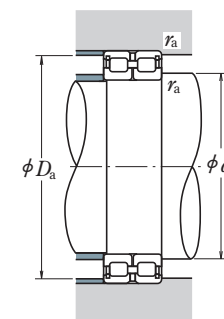
RS-48 · RS-49 Types
RSF-48 · RSF-49 Types
Bore Diameter 50 – 220 mm



Fixed-End Bearing
RS



Free-End Bearing
RSF



Boundary Dimensions (mm)				Basic Load Ratings (N)		Limiting Speeds (min ⁻¹)	
<i>d</i>	<i>D</i>	<i>B</i>	<i>r</i> min.	<i>C_r</i>	<i>C_{0r}</i>	Grease	Oil
50	72	22	0.6	48 000	75 500	2 000	4 000
60	85	25	1	68 500	118 000	1 600	3 200
65	90	25	1	70 500	125 000	1 600	3 200
70	100	30	1	102 000	168 000	1 400	2 800
80	110	30	1	109 000	191 000	1 300	2 600
90	125	35	1.1	147 000	268 000	1 100	2 200
100	125	25	1	87 500	189 000	1 100	2 200
	140	40	1.1	194 000	400 000	1 000	2 000
105	130	25	1	89 000	196 000	1 000	2 000
	145	40	1.1	199 000	420 000	950	1 900
110	140	30	1	114 000	260 000	950	1 900
	150	40	1.1	202 000	430 000	900	1 800
120	150	30	1	119 000	283 000	900	1 800
	165	45	1.1	226 000	480 000	800	1 600
130	165	35	1.1	162 000	390 000	800	1 600
	180	50	1.5	262 000	555 000	750	1 500
140	175	35	1.1	167 000	415 000	750	1 500
	190	50	1.5	272 000	595 000	710	1 400
150	190	40	1.1	235 000	575 000	670	1 400
	210	60	2	390 000	865 000	670	1 300
160	200	40	1.1	243 000	615 000	630	1 300
	220	60	2	410 000	930 000	600	1 200
170	215	45	1.1	265 000	650 000	600	1 200
	230	60	2	415 000	975 000	600	1 200
180	225	45	1.1	272 000	685 000	560	1 100
	250	69	2	495 000	1 130 000	530	1 100
190	240	50	1.5	315 000	785 000	530	1 100
	260	69	2	510 000	1 180 000	500	1 000
200	250	50	1.5	320 000	825 000	500	1 000
	280	80	2.1	665 000	1 500 000	480	950
220	270	50	1.5	340 000	905 000	450	900
	300	80	2.1	695 000	1 620 000	430	850

Remark Cylindrical roller bearings for sheaves are designed for specific applications, when using them, please contact NSK.

Bearing Numbers ⁽¹⁾		Dimensions (mm)		Abutment and Fillet Dimensions (mm)			Mass (kg)
Fixed-End Bearing	Free-End Bearing	<i>d</i> _{OH} ⁽²⁾	Axial Disp. ⁽³⁾	<i>d</i> _a min.	<i>D</i> _a max.	<i>r</i> _a max.	approx.
RS-4910E4	RSF-4910E4	2.5	1.5	54	68	0.6	0.30
RS-4912E4	RSF-4912E4	2.5	1.5	65	80	1	0.46
RS-4913E4	RSF-4913E4	2.5	2	70	85	1	0.50
RS-4914E4	RSF-4914E4	3	2	75	95	1	0.79
RS-4916E4	RSF-4916E4	3	2	85	105	1	0.89
RS-4918E4	RSF-4918E4	3	2	96.5	118.5	1	1.35
RS-4820E4	RSF-4820E4	2.5	1.5	105	120	1	0.74
RS-4920E4	RSF-4920E4	3	2	106.5	133.5	1	1.97
RS-4821E4	RSF-4821E4	2.5	1.5	110	125	1	0.77
RS-4921E4	RSF-4921E4	3	2	111.5	138.5	1	2.05
RS-4822E4	RSF-4822E4	3	2	115	135	1	1.09
RS-4922E4	RSF-4922E4	3	2	116.5	143.5	1	2.15
RS-4824E4	RSF-4824E4	3	2	125	145	1	1.28
RS-4924E4	RSF-4924E4	4	3	126.5	158.5	1	2.95
RS-4826E4	RSF-4826E4	3	2	136.5	158.5	1	1.9
RS-4926E4	RSF-4926E4	5	3.5	138	172	1.5	3.95
RS-4828E4	RSF-4828E4	3	2	146.5	168.5	1	2.03
RS-4928E4	RSF-4928E4	5	3.5	148	182	1.5	4.25
RS-4830E4	RSF-4830E4	3	2	156.5	183.5	1	2.85
RS-4930E4	RSF-4930E4	5	3.5	159	201	2	6.65
RS-4832E4	RSF-4832E4	3	2	166.5	193.5	1	3.05
RS-4932E4	RSF-4932E4	5	3.5	169	211	2	7.0
RS-4834E4	RSF-4834E4	4	3	176.5	208.5	1	4.1
RS-4934E4	RSF-4934E4	4	3.5	179	221	2	7.35
RS-4836E4	RSF-4836E4	4	3	186.5	218.5	1	4.3
RS-4936E4	RSF-4936E4	6	4.5	189	241	2	10.7
RS-4838E4	RSF-4838E4	5	3.5	198	232	1.5	5.65
RS-4938E4	RSF-4938E4	6	4.5	199	251	2	11.1
RS-4840E4	RSF-4840E4	5	3.5	208	242	1.5	5.95
RS-4940E4	RSF-4940E4	7	5	211	269	2	15.7
RS-4844E4	RSF-4844E4	5	3.5	228	262	1.5	6.45
RS-4944E4	RSF-4944E4	7	5	231	289	2	17

Notes ⁽¹⁾ The suffix E4 indicates that the outer ring is provided with oil holes and oil groove.

⁽²⁾ *d*_{OH} represents the oil hole diameter in the outer ring.

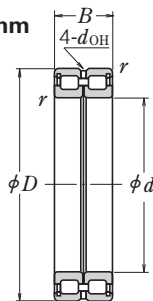
⁽³⁾ Permissible axial displacement for free-end bearings.

■ FULL-COMPLEMENT CYLINDRICAL ROLLER BEARINGS FOR SHEAVES

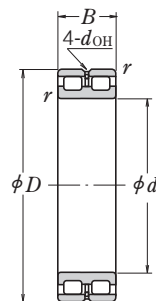
RS-48 · RS-49 Types

RSF-48 · RSF-49 Types

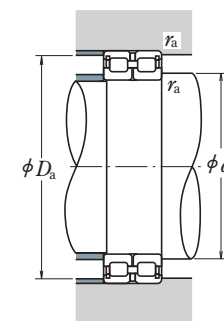
Bore Diameter 240 – 560 mm



Fixed-End Bearing
RS



Free-End Bearing
RSF



d	Boundary Dimensions (mm)			Basic Load Ratings (N)		Limiting Speeds (min ⁻¹)	
	D	B	r min.	C _r	C _{0r}	Grease	Oil
240	300	60	2	495 000	1 340 000	430	850
	320	80	2.1	725 000	1 770 000	400	800
260	320	60	2	515 000	1 450 000	380	750
	360	100	2.1	1 050 000	2 530 000	360	710
280	350	69	2	610 000	1 690 000	340	710
	380	100	2.1	1 090 000	2 720 000	340	670
300	380	80	2.1	805 000	2 160 000	320	630
	420	118	3	1 460 000	3 400 000	300	600
320	400	80	2.1	835 000	2 310 000	300	600
	440	118	3	1 500 000	3 600 000	280	560
340	420	80	2.1	855 000	2 430 000	280	560
	460	118	3	1 560 000	3 900 000	260	530
360	440	80	2.1	885 000	2 580 000	260	530
	480	118	3	1 600 000	4 050 000	260	500
380	480	100	2.1	1 260 000	3 600 000	240	500
	520	140	4	2 040 000	5 200 000	240	450
400	500	100	2.1	1 290 000	3 750 000	240	480
	540	140	4	2 100 000	5 450 000	220	450
420	520	100	2.1	1 320 000	3 950 000	220	450
	560	140	4	2 150 000	5 700 000	200	430
440	540	100	2.1	1 350 000	4 150 000	200	430
	600	160	4	2 840 000	7 350 000	190	380
460	580	118	3	1 730 000	5 150 000	190	380
	620	160	4	2 870 000	7 500 000	190	380
480	600	118	3	1 760 000	5 300 000	190	380
	650	170	5	3 200 000	8 500 000	180	360
500	620	118	3	1 810 000	5 600 000	180	360
	670	170	5	3 300 000	8 900 000	170	340
530	710	180	5	3 400 000	9 200 000	160	320
	750	190	5	3 800 000	10 100 000	150	300

Remark Cylindrical roller bearings for sheaves are designed for specific applications, when using them, please contact NSK.

Bearing Numbers ⁽¹⁾		Dimensions (mm)		Abutment and Fillet Dimensions (mm)			Mass (kg) approx.
Fixed-End Bearing	Free-End Bearing	d _{OH} ⁽²⁾	Axial Disp. ⁽³⁾	d _a min.	D _a max.	r _a max.	
RS-4848E4	RSF-4848E4	5	3.5	249	291	2	10.3
RS-4948E4	RSF-4948E4	7	5	251	309	2	18.4
RS-4852E4	RSF-4852E4	5	3.5	269	311	2	11
RS-4952E4	RSF-4952E4	8	6	271	349	2	32
RS-4856E4	RSF-4856E4	6	4.5	289	341	2	16
RS-4956E4	RSF-4956E4	8	6	291	369	2	34
RS-4860E4	RSF-4860E4	6	5	311	369	2	23
RS-4960E4	RSF-4960E4	9	7	313	407	2.5	52
RS-4864E4	RSF-4864E4	6	5	331	389	2	24.3
RS-4964E4	RSF-4964E4	9	7	333	427	2.5	55
RS-4868E4	RSF-4868E4	6	5	351	409	2	25.6
RS-4968E4	RSF-4968E4	9	7	353	447	2.5	58
RS-4872E4	RSF-4872E4	6	5	371	429	2	27
RS-4972E4	RSF-4972E4	9	7	373	467	2.5	61
RS-4876E4	RSF-4876E4	8	6	391	469	2	45.5
RS-4976E4	RSF-4976E4	11	8	396	504	3	90.5
RS-4880E4	RSF-4880E4	8	6	411	489	2	47.5
RS-4980E4	RSF-4980E4	11	8	416	524	3	94.5
RS-4884E4	RSF-4884E4	8	6	431	509	2	49.5
RS-4984E4	RSF-4984E4	11	8	436	544	3	98.5
RS-4888E4	RSF-4888E4	8	6	451	529	2	51.5
RS-4988E4	RSF-4988E4	11	8	456	584	3	136
RS-4892E4	RSF-4892E4	9	7	473	567	2.5	77.5
RS-4992E4	RSF-4992E4	11	8	476	604	3	142
RS-4896E4	RSF-4896E4	9	7	493	587	2.5	80.5
RS-4996E4	RSF-4996E4	12	9	500	630	4	167
RS-48/500E4	RSF-48/500E4	9	7	513	607	2.5	83.5
RS-49/500E4	RSF-49/500E4	12	9	520	650	4	173
RS-49/530E4	RSF-49/530E4	12	11	550	690	4	206
RS-49/560E4	RSF-49/560E4	12	11	580	730	4	231

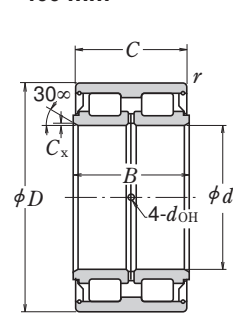
Notes ⁽¹⁾ The suffix E4 indicates that the outer ring is provided with oil holes and oil groove.

⁽²⁾ d_{OH} represents the oil hole diameter in the outer ring.

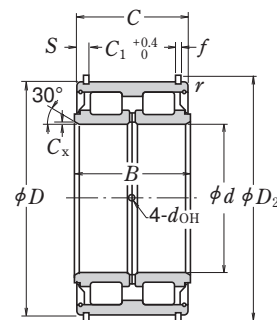
⁽³⁾ Permissible axial displacement for free-end bearings.

■ FULL-COMPLEMENT CYLINDRICAL ROLLER BEARINGS FOR SHEAVES

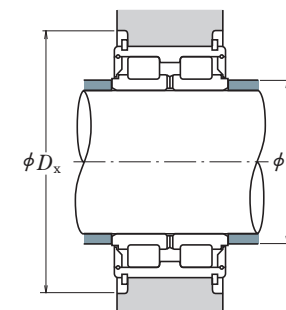
RS-50 Type (Prelubricated)
Bore Diameter 40 – 400 mm



Without Locating Ring



With Locating Ring



Boundary Dimensions (mm)						Basic Load Ratings (N)		Limiting Speeds (min ⁻¹) Grease
d	D	B	C	C _x ⁽¹⁾ min.	r min.	C _r	C _{0r}	
40	68	38	37	0.4	0.6	79 500	116 000	2 400
45	75	40	39	0.4	0.6	95 500	144 000	2 200
50	80	40	39	0.4	0.6	100 000	158 000	2 000
55	90	46	45	0.6	0.6	118 000	193 000	1 800
60	95	46	45	0.6	0.6	123 000	208 000	1 700
65	100	46	45	0.6	0.6	128 000	224 000	1 600
70	110	54	53	0.6	0.6	171 000	285 000	1 400
75	115	54	53	0.6	0.6	179 000	305 000	1 400
80	125	60	59	0.6	0.6	251 000	430 000	1 200
85	130	60	59	0.6	0.6	256 000	445 000	1 200
90	140	67	66	1	0.6	305 000	540 000	1 100
95	145	67	66	1	0.6	310 000	565 000	1 100
100	150	67	66	1	0.6	320 000	585 000	1 000
110	170	80	79	1.1	1	385 000	695 000	900
120	180	80	79	1.1	1	400 000	750 000	850
130	200	95	94	1.1	1	535 000	1 000 000	750
140	210	95	94	1.1	1	550 000	1 040 000	710
150	225	100	99	1.3	1	620 000	1 210 000	670
160	240	109	108	1.3	1.1	695 000	1 370 000	630
170	260	122	121	1.3	1.1	860 000	1 680 000	600
180	280	136	135	1.3	1.1	980 000	1 910 000	530
190	290	136	135	1.3	1.1	1 120 000	2 230 000	500
200	310	150	149	1.3	1.1	1 310 000	2 650 000	480
220	340	160	159	1.5	1.1	1 510 000	3 100 000	430
240	360	160	159	1.5	1.1	1 570 000	3 350 000	400
260	400	190	189	2	1.5	2 130 000	4 500 000	360
280	420	190	189	2	1.5	2 170 000	4 700 000	340
300	460	218	216	2	1.5	2 670 000	5 850 000	300
320	480	218	216	2	1.5	2 720 000	6 100 000	300
340	520	243	241	2.1	2	3 350 000	7 550 000	260
360	540	243	241	2.1	2	3 450 000	7 850 000	260
380	560	243	241	2.1	2	3 550 000	8 400 000	240
400	600	272	270	2.1	2	4 250 000	9 950 000	220

Note (1) Chamfer dimension of inner ring in radial direction.

- Remarks 1. Good quality grease is prepacked in bearings.
2. Grease can be supplied through oil holes in the inner rings.

Bearing Numbers		Locating Ring Dimensions (mm)				Oil Holes (mm) d _{OH}	Abutment and Fillet Dimensions (mm)		Mass (kg) approx.
Without Locating Ring	With Locating Ring	C ₁	S	D ₂	f		d _a min.	D _x min.	
RS-5008	RS-5008NR	28	4.5	71.8	2	2.5	43.5	77.5	0.56
RS-5009	RS-5009NR	30	4.5	78.8	2	2.5	48.5	84.5	0.70
RS-5010	RS-5010NR	30	4.5	83.8	2	2.5	53.5	89.5	0.76
RS-5011	RS-5011NR	34	5.5	94.8	2.5	3	60	101	1.17
RS-5012	RS-5012NR	34	5.5	99.8	2.5	3	65	106	1.25
RS-5013	RS-5013NR	34	5.5	104.8	2.5	3	70	111	1.32
RS-5014	RS-5014NR	42	5.5	114.5	2.5	3	75	121	1.87
RS-5015	RS-5015NR	42	5.5	119.5	2.5	3	80	126	2.0
RS-5016	RS-5016NR	48	5.5	129.5	2.5	3	85	136	2.65
RS-5017	RS-5017NR	48	5.5	134.5	2.5	3	90	141	2.75
RS-5018	RS-5018NR	54	6	145.4	2.5	4	96	153.5	3.75
RS-5019	RS-5019NR	54	6	150.4	2.5	4	101	158.5	3.95
RS-5020	RS-5020NR	54	6	155.4	2.5	4	106	163.5	4.05
RS-5022	RS-5022NR	65	7	175.4	2.5	5	116.5	183.5	6.1
RS-5024	RS-5024NR	65	7	188	3	5	126.5	197	7.0
RS-5026	RS-5026NR	77	8.5	207	3	5	136.5	217	10.6
RS-5028	RS-5028NR	77	8.5	217	3	5	146.5	227	11.3
RS-5030	RS-5030NR	81	9	232	3	6	157	242	13.7
RS-5032	RS-5032NR	89	9.5	247	3	6	167	257	16.8
RS-5034	RS-5034NR	99	11	270	4	6	177	285	22.2
RS-5036	RS-5036NR	110	12.5	294	5	6	187	318	30
RS-5038	RS-5038NR	110	12.5	304	5	6	197	328	32
RS-5040	RS-5040NR	120	14.5	324	5	6	207	352	41
RS-5044	RS-5044NR	130	14.5	356	6	7	228.5	382	53
RS-5048	RS-5048NR	130	14.5	376	6	7	248.5	402	57
RS-5052	RS-5052NR	154	17.5	416	7	8	270	444	86
RS-5056	RS-5056NR	154	17.5	436	7	8	290	472	92
RS-5060	RS-5060NR	178	19	476	7	8	310	512	130
RS-5064	—	—	—	—	—	8	330	—	135
RS-5068	—	—	—	—	—	10	352	—	185
RS-5072	—	—	—	—	—	10	372	—	192
RS-5076	—	—	—	—	—	10	392	—	196
RS-5080	—	—	—	—	—	10	412	—	280

- Remarks 3. Cylindrical roller bearings for sheaves are designed for specific applications, when using them, please contact NSK.
4. For shield with outside diameter larger than 180mm, the above figure is different actual shape. For detail drawing, please contact NSK.