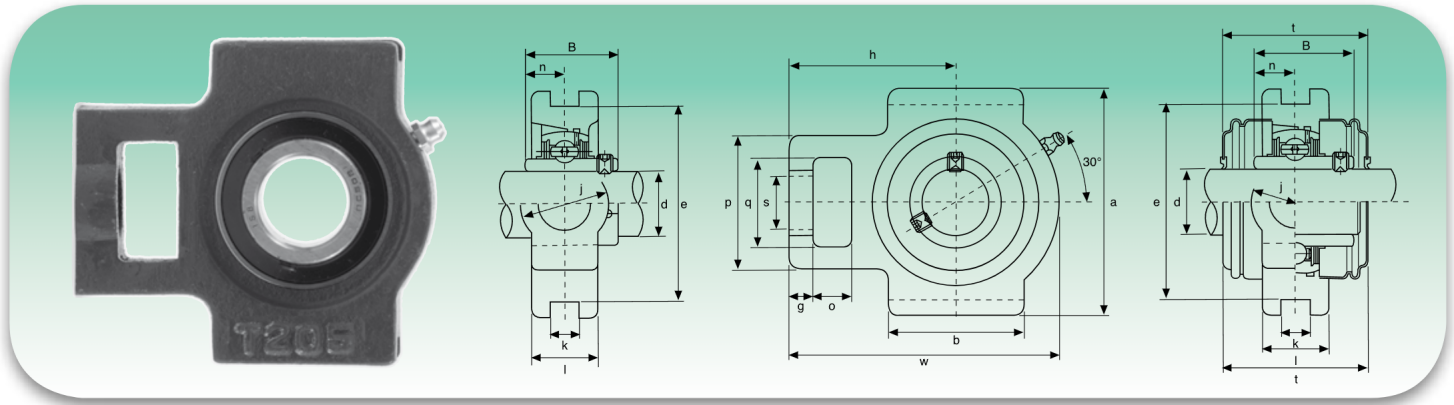
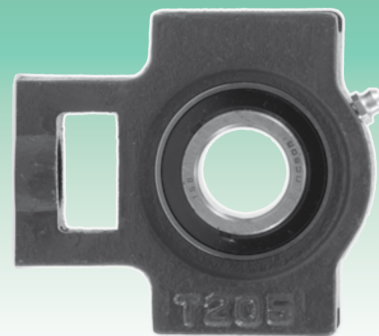
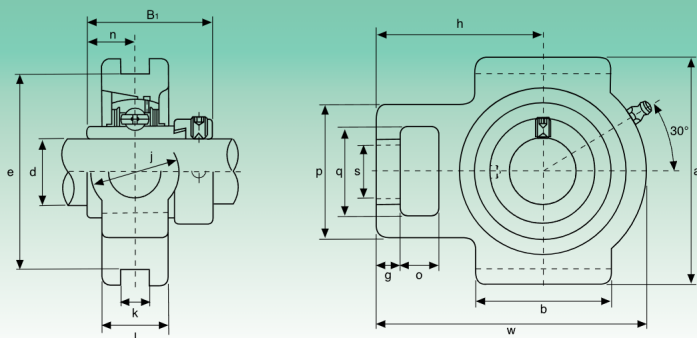


UCT2 Normale Reihe - Нормальная серия



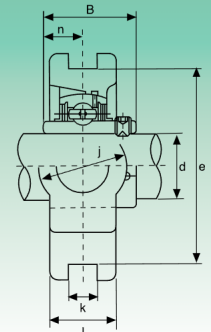
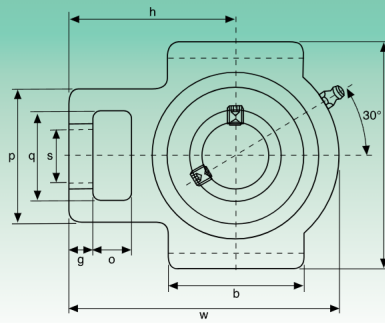
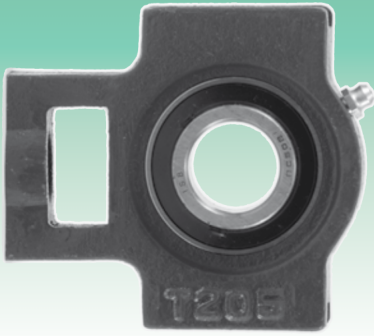
Typ Тип	Abmessungen - Размеры															Tragzahlen (N) Коэффициент нагрузки (H)		Lager Подшипник	Gehäuse Корпус	Gewicht Вес			
	d	o	g	p	q	s	b	k	e	a	w	j	l	h	t	B	N				dynamisch C Динамическая C	statisch C ₀ Статическая C ₀	kg
	mm/Zoll - мм/дюйм																						
UCT201	12	16	10	51	32	19	51	12	76	89	94	32	24	61	44,5	31	12,7	12160	6318	UC201	T204	0,80	
UCT201-8	3/4	5/8	25/64	11/64	1 1/4	3/4	21/64	15/32	263/64	3 1/2	311/16	1 1/4	15/16	213/32	1 3/4	1,2205	0,500			UC201-8		0,79	
UCT202	15	16	10	51	32	19	51	12	76	89	94	32	24	61	44,5	31	12,7	12160	6318	UC202	T204	0,79	
UCT202-9	9/16	5/8	25/64	11/64	1 1/4	3/4	21/64	15/32	263/64	3 1/2	311/16	1 1/4	15/16	213/32	1 3/4	1,2205	0,500			UC202-9		0,79	
UCT202-10	5/8	5/8	25/64	11/64	1 1/4	3/4	21/64	15/32	263/64	3 1/2	311/16	1 1/4	15/16	213/32	1 3/4	1,2205	0,500			UC202-10		0,79	
UCT203	17	16	10	51	32	19	51	12	76	89	94	32	24	61	44,5	31	12,7	12160	6318	UC203	T204	0,78	
UCT203-11	11/16	5/8	25/64	11/64	1 1/4	3/4	21/64	15/32	263/64	3 1/2	311/16	1 1/4	15/16	213/32	1 3/4	1,2205	0,500			UC203-11		0,77	
UCT204	20	16	10	51	32	19	51	12	76	89	94	32	24	61	44,5	31	12,7	12160	6318	UC204	T204	0,76	
UCT204-12	3/4	5/8	25/64	11/64	1 1/4	3/4	21/64	15/32	263/64	3 1/2	311/16	1 1/4	15/16	213/32	1 3/4	1,2205	0,500			UC204-12		0,76	
UCT205	25	16	10	51	32	19	51	12	76	89	97	32	24	62	48	34,1	14,3	13300	7457	UC205	T205	0,81	
UCT205-13	13/16	7/8	5/8	25/64	11/64	1 1/4	3/4	21/64	15/32	263/64	3 1/2	313/16	1 1/4	15/16	27/16	17/8	1,3425	0,563			UC205-13		0,85
UCT205-14	7/8	7/8	5/8	25/64	11/64	1 1/4	3/4	21/64	15/32	263/64	3 1/2	313/16	1 1/4	15/16	27/16	17/8	1,3425	0,563			UC205-14		0,84
UCT205-15	15/16	1	5/8	25/64	11/64	1 1/4	3/4	21/64	15/32	263/64	3 1/2	313/16	1 1/4	15/16	27/16	17/8	1,3425	0,563			UC205-15		0,82
UCT205-16	1	1	5/8	25/64	11/64	1 1/4	3/4	21/64	15/32	263/64	3 1/2	313/16	1 1/4	15/16	27/16	17/8	1,3425	0,563			UC205-16		0,81
UCT206	30	16	10	56	37	22	57	12	89	102	113	37	28	70	53	38,1	15,9	18525	10735	UC206	T206	1,22	
UCT206-17	11/16	11/8	5/8	27/32	129/64	55/64	2 1/4	15/32	3 1/2	41/64	429/64	129/64	13/32	2 3/4	23/32	1,5000	0,626			UC206-17		1,23	
UCT206-18	11/8	13/16	5/8	27/32	129/64	55/64	2 1/4	15/32	3 1/2	41/64	429/64	129/64	13/32	2 3/4	23/32	1,5000	0,626			UC206-18		1,24	
UCT206-19	13/16	1 1/4	5/8	27/32	129/64	55/64	2 1/4	15/32	3 1/2	41/64	429/64	129/64	13/32	2 3/4	23/32	1,5000	0,626			UC206-19		1,22	
UCT206-20	1 1/4	1 1/2	5/8	27/32	129/64	55/64	2 1/4	15/32	3 1/2	41/64	429/64	129/64	13/32	2 3/4	23/32	1,5000	0,626			UC206-20		1,21	
UCT207	35	16	13	64	37	22	64	12	89	102	129	37	30	78	59,5	42,9	17,5	24415	14630	UC207	T207	1,44	
UCT207-20	1 1/4	1 1/2	5/8	33/64	233/64	129/64	55/64	233/64	15/32	3 1/2	41/64	55/64	129/64	13/16	35/64	211/32	1,6890	0,689			UC207-20		1,50
UCT207-21	15/16	1 1/2	5/8	33/64	233/64	129/64	55/64	233/64	15/32	3 1/2	41/64	55/64	129/64	13/16	35/64	211/32	1,6890	0,689			UC207-21		1,48
UCT207-22	13/8	1 1/2	5/8	33/64	233/64	129/64	55/64	233/64	15/32	3 1/2	41/64	55/64	129/64	13/16	35/64	211/32	1,6890	0,689			UC207-22		1,44
UCT207-23	17/16	1 1/2	5/8	33/64	233/64	129/64	55/64	233/64	15/32	3 1/2	41/64	55/64	129/64	13/16	35/64	211/32	1,6890	0,689			UC207-23		1,41
UCT208	40	19	16	83	49	29	83	16	102	114	144	49	35	89	69	49,2	19	27645	16910	UC208	T208	2,40	
UCT208-24	1 1/2	3/4	5/8	317/64	115/16	19/64	317/64	5/8	41/64	431/64	543/64	115/16	13/8	3 1/2	223/32	1,9370	0,748			UC208-24		2,44	
UCT208-25	19/16	3/4	5/8	317/64	115/16	19/64	317/64	5/8	41/64	431/64	543/64	115/16	13/8	3 1/2	223/32	1,9370	0,748			UC208-25		2,41	
UCT209	45	19	16	83	49	29	83	16	102	117	144	49	35	87	69	49,2	19	32395	20235	UC209	T209	2,36	
UCT209-26	15/8	3/4	5/8	317/64	115/16	19/64	317/64	5/8	41/64	439/64	543/64	115/16	13/8	327/64	223/32	1,9370	0,748			UC209-26		2,46	
UCT209-27	11/16	3/4	5/8	317/64	115/16	19/64	317/64	5/8	41/64	439/64	543/64	115/16	13/8	327/64	223/32	1,9370	0,748			UC209-27		2,42	
UCT209-28	1 3/4	1 3/4	5/8	317/64	115/16	19/64	317/64	5/8	41/64	439/64	543/64	115/16	13/8	327/64	223/32	1,9370	0,748			UC209-28		2,38	
UCT210	50	19	16	83	49	29	86	16	102	117	149	49	35	90	74,5	51,6	19	33345	22135	UC210	T210	2,43	
UCT210-29	113/16	1 1/2	5/8	317/64	115/16	19/64	317/64	5/8	41/64	439/64	555/64	115/16	13/8	335/64	215/16	2,0315	0,748			UC210-29		2,55	
UCT210-30	17/8	1 1/2	5/8	317/64	115/16	19/64	317/64	5/8	41/64	439/64	555/64	115/16	13/8	335/64	215/16	2,0315	0,748			UC210-30		2,50	
UCT210-31	115/16	1 1/2	5/8	317/64	115/16	19/64	317/64	5/8	41/64	439/64	555/64	115/16	13/8	335/64	215/16	2,0315	0,748			UC210-31		2,45	
UCT210-32	2	1 1/2	5/8	317/64	115/16	19/64	317/64	5/8	41/64	439/64	555/64	115/16	13/8	335/64	215/16	2,0315	0,748			UC210-32		2,41	
UCT211	55	25	19	102	64	35	95	22	130	146	171	64	41	106	76	55,6	22,2	41230	27930	UC211	T211	4,11	
UCT211-32	2	2 1/8	3/4	41/64	21/32	13/8	3 3/4	55/64	51/8	5 3/4	647/64	233/64	15/8	411/64	3	2,1890	0,874			UC211-32		4,26	
UCT211-33	21/16	2 1/8	3/4	41/64	21/32	13/8	3 3/4	55/64	51/8	5 3/4	647/64	233/64	15/8	411/64	3	2,1890	0,874			UC211-33		4,20	
UCT211-34	21/8	2 1/8	3/4	41/64	21/32	13/8	3 3/4	55/64	51/8	5 3/4	647/64	233/64	15/8	411/64	3	2,1890	0,874			UC211-34		4,15	
UCT211-35	23/16	2 1/8	3/4	41/64	21/32	13/8	3 3/4	55/64	51/8	5 3/4	647/64	233/64	15/8	411/64	3	2,1890	0,874			UC211-35		4,09	
UCT212	60	32	19	102	64	35	102	22	130	146	194	64	46	119	89	65,1	25,4	49780	34390	UC212	T212	4,97	
UCT212-36	2 1/4	1 1/2	5/8	41/64	21/32	13/8	41/64	55/64	51/8	5 3/4	741/64	233/64	113/16	411/16	3 1/2	2,5630	1,000			UC212-36		5,10	
UCT212-37	25/16	1 1/2	5/8	41/64	21/32	13/8	41/64	55/64	51/8	5 3/4	741/64	233/64	113/16	411/16	3 1/2	2,5630	1,000			UC212-37		5,02	
UCT212-38	23/8	1 1/2	5/8	41/64	21/32	13/8	41/64	55/64	51/8	5 3/4	741/64	233/64	113/16	411/16	3 1/2	2,5630	1,000			UC212-38		4,95	
UCT212-39	27/16	1 1/2	5/8	41/64	21/32	13/8	41/64	55/64	51/8	5 3/4	741/64	233/64	113/16	411/16	3 1/2	2,5630	1,000			UC212-39		4,88	
UCT213	65	32	21	111	70	41	121	26	151	167	224	70	51	137	89	65,1	25,4	54340	38095	UC213	T213	6,65	
UCT213-40	2 1/2	1 1/2	5/8	43/8	2 3/4	139/64	449/64	11/32	515/16	637/64	813/16	2 3/4	2	525/64	3 1/2	2,5630	1,000			UC213-40		6,74	
UCT213-41	29/16	1 1/2	5/8	43/8	2 3/4	139/64	449/64	11/32	515/16	637/64	813/16	2 3/4	2	525/64	3 1/2	2,5630	1,000			UC213-41		6,65	
UCT214	70	32	21	111	70	41	121	26	151	167	224	70	46	137	-	74,6	30,2	59090	41895	UC214	T214	7,05	
UCT214-42	25/8	1 1/2	5/8	43/8	2 3/4	139/64	449/64	11/32	515/16	637/64	813/16	2 3/4	113/16	525/64	-	2,9370	1,189			UC214-42		7,26	
UCT214-43	21/16	1 1/2	5/8	43/8	2 3/4	139/64	449/64	11/32	515/16	637/64	813/16	2 3/4	113/16	525/64	-	2,9370	1,189			UC214-43		7,16	
UCT214-44	2 3/4	1 1/2	5/8	43/8	2 3/4	139/64	449/64	11/32	515/16	637/64	813/16	2 3/4	113/16	525/64	-	2,9370	1,189			UC214-44		7,06	
UCT215	75	32	21	111	70	41	121	26	151	167	232	70	48	140	-	77,8	33,3	64030	45885	UC215	T215	7,41	
UCT215-45	213/16	1 1/2	5/8	43/8	2 3/4	139/64	449/64	11/32	515/16	637/64	99/64	2 3/4	157/64	533/64	-	3,0630	1,311			UC215-45		7,66	
UCT215-46	27/8	1 1/2	5/8	43/8	2 3/4	139/64	449/64	11/32	515/16	637/64	99/64	2 3/4	157/64	533/64	-	3,0630	1,311			UC215-46		7,55	
UCT215-47	215/16	1 1/2	5/8</																				

HCT2 Normale Reihe - Нормальная серия



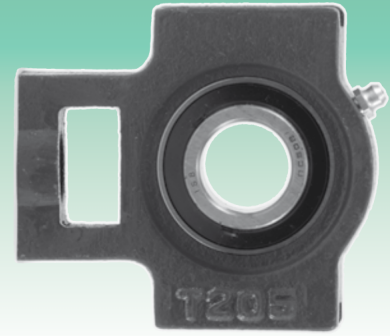
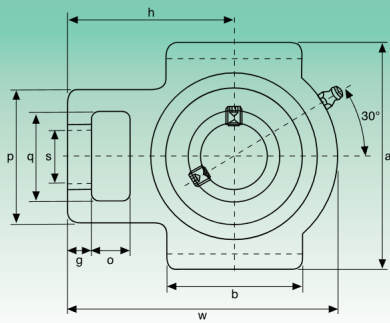
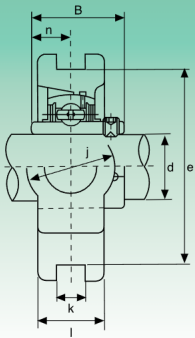
Typ Тип	Abmessungen - Размеры																Tragzahlen (N) Коэффициент нагрузки (H)		Lager Подшипник	Gehäuse Корпус	Gewicht Вес	
	d	o	g	p	q	s	b	k	e	a	w	j	i	h	B ₁	n	dynamisch C Динамическая C _d	statisch C ₀ Статическая C ₀				kg
	mm/Zoll - мм/дюйм																					
HCT204	20	16	10	51	32	19	51	12	76	89	94	32	24	61	43,7	17,1	12160	6318	HC204	T204	0,83	
HCT204-12	¾	5/8	25/64	11/16	1¼	¾	21/64	15/32	263/64	3½	311/16	1¼	15/16	213/32	1,720	0,673			HC204-12		0,83	
HCT205	25	16	10	51	32	19	51	12	76	89	97	32	24	62	44,4	17,5	13300	7457	HC205	T205	0,88	
HCT205-13	13/16																		HC205-13		0,93	
HCT205-14	7/8																		HC205-14		0,92	
HCT205-15	15/16	5/8	25/64	11/16	1¼	¾	21/64	15/32	263/64	3½	313/16	1¼	15/16	27/16	1,748	0,689			HC205-15		0,90	
HCT205-16	1																		HC205-16		0,88	
HCT206	30	16	10	56	37	22	57	12	89	102	113	37	28	70	48,4	18,3	18525	10735	HC206	T206	1,35	
HCT206-17	11/16																		HC206-17		1,40	
HCT206-18	11/8																		HC206-18		1,37	
HCT206-19	13/16	5/8	25/64	27/32	129/64	55/64	2¼	15/32	3½	41/64	429/64	129/64	13/32	2¾	1,906	0,720			HC206-19		1,35	
HCT206-20	1¼																		HC206-20		1,32	
HCT207	35	16	13	64	37	22	64	12	89	102	129	37	30	78	51,1	18,8	24415	14630	HC207	T207	1,56	
HCT207-20	1¼																		HC207-20		1,63	
HCT207-21	15/16																		HC207-21		1,59	
HCT207-22	13/8	5/8	33/64	233/64	129/64	55/64	233/64	15/32	3½	41/64	55/64	129/64	13/16	35/64	2,012	0,740			HC207-22		1,56	
HCT207-23	17/16																		HC207-23		1,53	
HCT208	40	19	16	83	49	29	83	16	102	114	144	49	35	89	56,3	21,4	27645	16910	HC208	T208	2,55	
HCT208-24	1½	¾	5/8	317/64	115/16	19/64	317/64	5/8	41/64	431/64	543/64	115/16	13/8	3½	2,217	0,843			HC208-24		2,60	
HCT208-25	19/16																		HC208-25		2,56	
HCT209	45	19	16	83	49	29	83	16	102	117	144	49	35	87	56,3	21,4	32395	20235	HCF209	T209	2,53	
HCT209-26	15/8																		HC209-26		2,64	
HCT209-27	111/16	¾	5/8	317/64	115/16	19/64	317/64	5/8	41/64	439/64	543/64	115/16	13/8	327/64	2,217	0,843			HC209-27		2,59	
HCT209-28	1¾																		HC209-28		2,55	
HCT210	50	19	16	83	49	29	86	16	102	117	149	49	35	90	6,7	24,6	33345	22135	HCF210	T210	2,62	
HCT210-29	113/16																		HC210-29		2,77	
HCT210-30	17/8	¾	5/8	317/64	115/16	19/64	325/64	5/8	41/64	439/64	555/64	115/16	13/8	335/64	2,469	0,969			HC210-30		2,71	
HCT210-31	115/16																		HC210-31		2,65	
HCT210-32	2																HC210-32	2,59				
HCT211	55	25	19	102	64	35	95	22	130	146	171	64	41	106	71,4	27,8	41230	27930	HCF211	T211	4,32	
HCT211-32	2																		HC211-32		4,52	
HCT211-33	22/16																		HC211-33		4,44	
HCT211-34	21/8	63/64	¾	41/64	21/32	13/8	3¾	55/64	51/8	5¾	647/64	233/64	15/8	411/64	2,811	1,094			HC211-34		4,37	
HCT211-35	23/16																		HC211-35		4,29	
HCT212	60	32	19	102	64	35	102	22	130	146	194	64	46	119	77,8	31	49780	34390	HC212	T212	5,31	
HCT212-36	2¼																		HC212-36		5,47	
HCT212-37	25/16																		HC212-37		5,38	
HCT212-38	23/8	117/64	¾	41/64	21/32	13/8	41/64	55/64	51/8	5¾	741/64	233/64	113/16	411/16	3,063	1,220			HC212-38		5,33	
HCT212-39	27/16																		HC212-39		5,20	
HCT213	65	32	21	111	70	41	121	26	151	167	224	70	51	137	85,7	34,1	54340	38095	HC213	T213	7,21	
HCT213-40	2½																		HC213-40		7,31	
HCT213-41	29/16	117/64	53/64	43/8	2¾	139/64	449/64	11/32	515/16	6637/64	8183/16	2¾	2	525/64	3,374	1,343			HC213-41		7,20	
HCT214	70	32	21	111	70	41	121	26	151	167	224	70	46	137	85,7	34,1	59090	41895	HC214	T214	7,55	
HCT214-42	23/8																		HC214-42		7,79	
HCT214-43	211/16	117/64	53/64	43/8	2¾	139/64	449/64	11/32	515/16	6637/64	8183/16	2¾	113/16	525/64	3,374	1,343			HC214-43		7,68	
HCT214-44	2¾																		HC214-44		7,56	
HCT215	75	32	21	111	70	41	121	26	151	167	232	70	48	140	92,1	37,3	64030	45885	HC215	T215	8,04	
HCT215-45	213/16																		HC215-45		8,34	
HCT215-46	27/8																		HC215-46		8,21	
HCT215-47	215/16	117/64	53/64	43/8	2¾	139/64	449/64	11/32	515/16	6637/64	99/64	2¾	157/64	533/64	3,626	1,426			HC215-47		8,08	
HCT215-48	3																		HC215-48		7,94	

UCT3 Schwere Reihe - Тяжелая серия



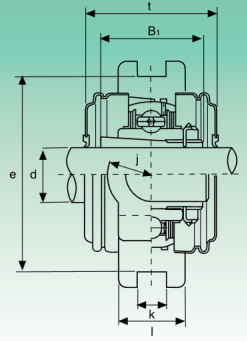
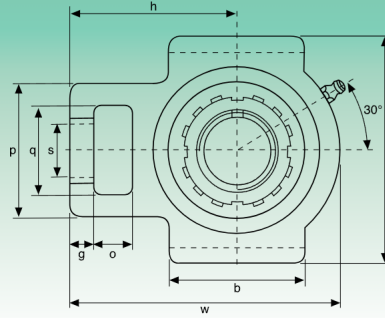
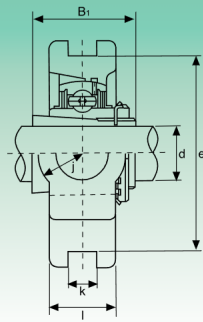
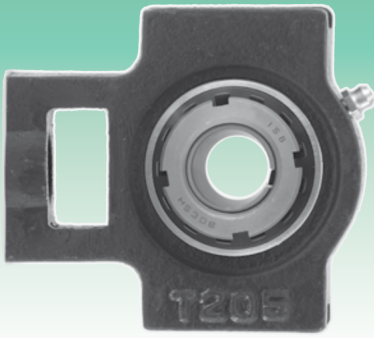
Typ Тун	Abmessungen - Размеры															Tragzahlen (N) Коэффициент нагрузки (H)		Lager Подшипник	Gehäuse Корпус	Gewicht Вес kg	
	d	o	g	p	q	s	b	k	e	a	w	j	l	h	B	n	dynamisch C Динамическая C				statisch C ₀ Статическая C ₀
	mm/Zoll - мм/дюйм																				
UCT305	25	16	14	62	36	26	65	12	80	89	122	36	26	76	38	15			UC305		
UCT305-13	13/16																		UC305-13		
UCT305-14	7/8																		UC305-14		
UCT305-15	15/16	5/8	9/16	27/16	113/32	11/32	29/16	0,472	35/32	3 1/2	413/16	113/32	11/32	3	1,4961	0,591	20140	10355	UC305-15	T305	1,4
UCT305-16	1																		UC305-16		
UCT306	30	18	16	70	41	28	74	16	90	100	137	41	28	85	43	17			UC306		
UCT306-17	11/16																		UC306-17		
UCT306-18	11/8	23/32	5/8	2 3/4	15/8	13/32	229/32	0,630	355/64	315/16	513/32	15/8	13/32	311/32	1,6929	0,669	25365	14250	UC306-18	T306	1,8
UCT306-19	13/16																		UC306-19		
UCT307	35	20	17	75	45	30	80	16	100	111	150	45	32	94	48	19			UC307		
UCT307-20	1 1/4																		UC307-20		
UCT307-21	15/16																		UC307-21		
UCT307-22	13/8	25/32	43/64	215/16	125/32	13/16	25/32	0,630	315/16	43/8	529/32	125/32	1 1/4	311/16	1,8898	0,748	31730	18335	UC307-22	T307	2,4
UCT307-23	17/16																		UC307-23		
UCT308	40	22	19	83	50	32	89	18	112	124	162	50	34	100	52	19			UC308		
UCT308-24	1 1/2																		UC308-24		
UCT308-25	19/6	7/8	3/4	317/64	131/32	1 1/4	3 1/2	0,709	413/32	47/8	63/8	121/32	111/32	321/16	2,0472	0,748	38665	22800	UC308-25	T308	3,0
UCT309	45	24	20	90	55	34	97	18	125	138	178	55	38	110	57	22			UC309		
UCT309-26	15/8																		UC309-26		
UCT309-27	11/16	15/16	25/32	317/32	25/32	111/32	313/16	0,709	459/64	57/16	7	25/32	1 1/2	411/32	2,2441	0,866	46455	28025	UC309-27	T309	4,0
UCT309-28	1 3/4																		UC309-28		
UCT310	50	27	22	98	61	37	106	20	140	151	192	61	40	118	61	22			UC310		
UCT310-29	113/16																		UC310-29		
UCT310-30	17/8	11/16	7/8	327/32	213/32	115/32	43/16	0,787	533/64	515/16	79/16	213/32	19/16	421/32	2,4016	0,866	58900	36385	UC310-30	T310	5,0
UCT310-31	115/16																		UC310-31		
UCT311	55	29	23	105	66	39	115	22	150	163	207	66	44	127	66	25			UC311		
UCT311-32	2																		UC311-32		
UCT311-33	21/16																		UC311-33		
UCT311-34	21/8	115/16	29/32	41/8	219/32	117/32	417/32	0,866	529/32	613/32	85/32	219/32	123/32	5	2,5984	0,984	68020	42750	UC311-34	T311	6,4
UCT311-35	23/16																		UC311-35		
UCT312	60	31	25	113	71	41	123	22	160	178	220	71	46	135	71	26			UC312		
UCT312-36	2 1/4																		UC312-36		
UCT312-37	25/16																		UC312-37		
UCT312-38	23/8	17/32	31/32	47/16	225/32	15/8	427/32	0,866	619/64	7	821/32	225/32	113/16	55/16	2,7953	1,024	77805	49590	UC312-38	T312	7,6
UCT312-39	27/16																		UC312-39		
UCT313	65	32	27	116	70	43	134	26	170	190	238	80	50	146	75	30			UC313		
UCT313-40	2 1/2																		UC313-40		
UCT313-41	29/16	117/64	11/16	49/16	2 3/4	111/16	59/32	1,024	611/16	715/32	93/8	35/32	131/32	5 3/4	2,9528	1,181	88065	56905	UC313-41	T313	9,7
UCT314	70	36	27	130	85	46	140	26	180	202	252	90	52	155	78	33			UC314		
UCT314-42	25/8																		UC314-42		
UCT314-43	21/16	113/32	11/16	51/8	311/32	113/16	5 1/2	1,024	73/32	715/16	929/32	317/32	21/16	63/32	3,2283	1,299	98800	64790	UC314-43	T314	11
UCT314-44	2 3/4																		UC314-44		
UCT315	75	36	27	132	85	46	150	26	192	216	262	90	55	160	82	32			UC315		
UCT315-45	213/16																		UC315-45		
UCT315-46	27/8																		UC315-46		
UCT315-47	215/16	113/32	11/16	53/16	311/32	113/16	529/32	1,024	79/16	8 1/2	105/16	317/32	25/32	65/16	3,2283	1,260	107350	73340	UC315-47	T315	14
UCT315-48	3																		UC315-48		
UCT316	80	42	30	150	98	53	160	30	204	230	282	102	60	174	86	34			UC316		
UCT316-49	31/16																		UC316-49		
UCT316-50	31/8	121/32	13/16	529/32	327/32	23/32	65/16	1,181	81/32	91/16	113/32	41/32	23/8	627/32	3,2283	1,260	116850	82365	UC316-50	T316	16
UCT316-51	33/16																		UC316-51		
UCT317	85	42	32	152	98	53	170	32	214	240	298	102	64	183	96	40			UC317		
UCT317-52	3 1/4																		UC317-52		
UCT317-53	35/16	121/32	1 1/4	531/32	327/32	23/32	611/16	1,260	827/64	97/16	1123/32	41/32	217/32	77/32	3,7795	1,575	126350	91960	UC317-53	T317	20
UCT317-55	37/16																		UC317-55		
UCT318	90	46	32	160	106	57	175	32	228	255	312	110	66	192	96	40			UC318		
UCT318-55	37/16																		UC318-55		
UCT318-56	3 1/2	113/16	1 1/4	65/16	43/16	2 1/4	67/8	1,260	831/32	101/32	129/32	411/32	219/32	79/16	3,7795	1,575	135850	101650	UC318-56	T318	22
UCT319	95	46	33	165	106	57	180	35	240	270	322	110	72	197	103	41			UC319		
UCT319-58	35/8																		UC319-58		
UCT319-59	311/16	113/16	15/16	6 1/2	43/16	2 1/4	73/32	1,378	929/64	105/8	1211/64	11/32	227/32	7 3/4	4,0551	1,614	145350	113050	UC319-59	T319	24
UCT319-60	3 3/4																		UC319-60		
UCT320	100	48	34	175	115	59	200	35	260	290	345	120	75	210	108	42			UC320		
UCT320-61	313/16																		UC320-61		
UCT320-62	37/8																		UC320-62		
UCT320-63	315/16	17/8	111/32	67/8	417/32	25/16	77/8	1,378	1015/64	1113/32	1319/32	423/32	215/16	89/32	4,2520	1,654	164350	133950	UC320-63	T320	32
UCT320-64	4																		UC320-64		
UCT322	110	52	38	185	125	65	215	38	285	320	385	130	80	235	117	46			UC322		
UCT324	120	60	42	210	140	70	230	45	320	355	432	140	90	267	126	51			UC324		
UCT326	130	65	45	220	150	75	240	50	350	385	465	150	100	285	135	54			UC326		
UCT328	140	70	50	230	160	80	255	50	380	415	515	155	100	315	145	59			UC328		
		2 1/4	131/32	91/16	65/16	35/32	101/32	1,969	1461/63	1611/32	209/32	63/32	315/16	1213/32	5,7086	2,3228	240350	233700		T328	84

UCTX Mittlere Reihe - Средняя серия



Typ Тип	Abmessungen - Размеры															Tragzahlen (N) Коэффициент нагрузки (H)		Lager Подшипник	Gehäuse Корпус	Gewicht Вес		
	d	o	g	p	q	s	b	k	e	a	w	j	l	h	B	n	dynamisch C Динамическая C				statisch C ₀ Статическая C ₀	kg
	mm/Zoll - мм/дюйм																					
UCTX05	25	16	12	56	37	22	57	12	89	102	113	28	37	70	38,1	15,9	18525	10735	UCX05	TX05	1,4	
UCTX05-13	13/16																					UCX05-13
UCTX05-14	7/8	5/8	15/32	27/32	129/64	55/64	2 1/4	0,472	3 1/2	41/64	429/64	13/32	129/64	2 3/4	1,5000	0,626						UCX05-14
UCTX05-15	15/16																					UCX05-15
UCTX05-16	1																					UCX05-16
UCTX06	30	16	15	64	37	22	64	12	89	102	129	30	37	78	42,9	17,5	24415	14630	UCX06	TX06	1,8	
UCTX06-17	11/16																					UCX06-17
UCTX06-18	11/8	5/8	19/32	233/64	129/64	55/64	233/64	0,472	3 1/2	41/64	55/64	13/16	129/64	35/64	1,6890	0,689						UCX06-18
UCTX06-19	13/16																					UCX06-19
UCTX06-20	1 1/4																					UCX06-20
UCTX07	35	19	17	83	49	29	83	16	102	114	144	36	49	88	49,2	19	27645	16910	UCX07	TX07	2,6	
UCTX07-21	15/16																					UCX07-21
UCTX07-22	13/8	3/4	21/32	317/64	115/16	19/64	317/64	0,630	41/64	431/64	543/64	113/32	115/16	315/32	1,9370	0,748						UCX07-22
UCTX07-23	17/16																					UCX07-23
UCTX08	40	19	17	83	49	29	83	16	102	117	144	36	49	87	49,2	19	32395	20235	UCX08	TX08	2,6	
UCTX08-24	1 1/2	3/4	21/32	317/64	115/16	19/64	317/64	0,630	41/64	439/64	543/64	113/32	115/16	327/64	1,9370	0,748						UCX08-24
UCTX08-25	19/16																					UCX08-25
UCTX09	45	19	18	83	49	29	86	16	102	117	151	38	49	92	51,6	19	33345	22135	UCX09	TX09	2,8	
UCTX09-26	15/8																					UCX09-26
UCTX09-27	111/16	3/4	23/32	317/64	115/16	19/64	325/64	0,630	41/64	439/64	515/16	1 1/2	115/16	35/8	2,0315	0,748						UCX09-27
UCTX09-28	1 3/4																					UCX09-28
UCTX09-29	113/16																					UCX09-29
UCTX10	50	25	21	102	64	35	95	22	130	146	171	42	64	106	55,6	22,2	41230	27930	UCX10	TX10	4,3	
UCTX10-30	17/8																					UCX10-30
UCTX10-31	115/16	63/64	13/16	41/64	21/32	13/8	3 3/4	0,866	51/8	5 3/4	647/64	121/32	233/64	4411/64	2,1890	0,874						UCX10-31
UCTX10-32	2																	UCX10-32				
UCTX11	55	32	21	102	64	35	102	22	130	146	194	44	64	119	65,1	25,4	49780	34390	UCX11	TX11	5,2	
UCTX11-33	21/16																					UCX11-33
UCTX11-34	21/8																					UCX11-34
UCTX11-35	23/16	117/64	13/16	41/64	21/32	13/8	41/64	0,866	51/8	5 3/4	741/64	123/32	233/64	4411/16	2,5630	1,000						UCX11-35
UCTX11-36	2 1/4																					UCX11-36
UCTX11-37	25/16																	UCX11-37				
UCTX12	60	32	23	111	70	41	121	26	151	167	224	48	70	137	65,1	25,4	54340	38095	UCX12	TX12	7,6	
UCTX12-38	23/8																					UCX12-38
UCTX12-39	27/16	117/64	29/32	43/8	2 3/4	139/64	449/64	1,024	515/16	637/64	813/16	157/64	2 3/4	525/64	2,5630	1,000						UCX12-39
UCTX13	65	32	23	111	70	41	121	26	151	167	224	48	70	137	74,6	30,2	59090	41895	UCX13	TX13	7,6	
UCTX13-40	2 1/2																					UCX13-40
UCTX13-41	29/16	117/64	29/32	43/8	2 3/4	139/64	449/64	1,024	515/16	637/64	813/16	157/64	2 3/4	525/64	2,9370	1,189						UCX13-41
UCTX14	70	32	23	111	70	41	121	26	151	167	232	48	70	140	77,8	33,3	64030	45885	UCX14	TX14	7,7	
UCTX14-42	25/8																					UCX14-42
UCTX14-43	211/16	117/64	29/32	43/8	2 3/4	139/64	449/64	1,024	515/16	637/64	99/64	157/64	2 3/4	533/64	3,0630	1,311						UCX14-43
UCTX14-44	2 3/4																					UCX14-44
UCTX15	75	32	23	111	70	41	121	28	165	184	235	48	70	140	82,6	33,3	69065	50350	UCX15	TX15	7,55	
UCTX15-45	213/16																					UCX15-45
UCTX15-46	27/8																					UCX15-46
UCTX15-47	215/16	117/64	29/32	43/8	2 3/4	139/64	449/64	1,102	6 1/2	7 1/4	9 1/4	157/64	2 3/4	533/64	3,2520	1,311						UCX15-47
UCTX15-48	3																					UCX15-48
UCTX16	80	38	30	124	73	48	157	28	173	198	260	54	73	162	85,7	34,1	79800	58805	UCX16	TX16	11	
UCTX16-49	31/16																					UCX16-49
UCTX16-50	31/8	1 1/2	13/16	47/8	27/8	157/64	63/16	1,102	613/16	751/64	1015/64	21/8	27/8	63/8	3,3740	1,343						UCX16-50
UCTX16-51	33/16																					UCX16-51
UCTX16-52	3 1/4																					UCX16-52
UCTX17	85	38	30	124	73	48	157	28	173	198	260	54	73	162	96	39,7	91295	67925	UCX17	TX17	12	
UCTX17-53	35/16	1 1/2	13/16	47/8	27/8	157/64	63/16	1,102	613/16	751/64	1015/64	21/8	27/8	63/8	3,7795	1,5630						UCX17-53
UCTX17-54	37/16																					UCX17-55

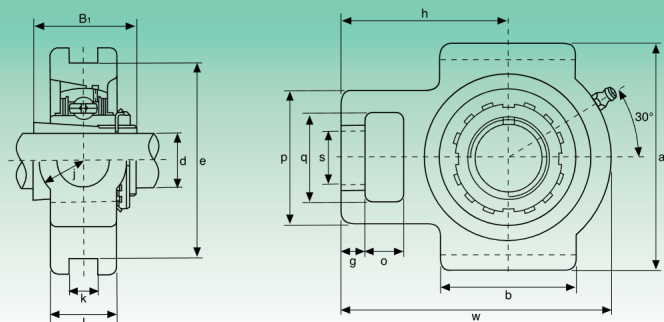
UKT2 Normale Reihe - Нормальная серия



Typ Тип	Abmessungen - Размеры															Tragzahlen (N) Коэффициент нагрузки (H)		Lager Подшипник	Gehäuse Корпус	Gewicht Вес		
	d	o	g	p	q	s	b	k	e	a	w	j	l	h	t	B ₁	dynamisch C _d Динамическая C _d				statisch C _s Статическая C _s	kg
	mm/Zoll - мм/дюйм																					
UKT205+H2305 UKT205+HE2305	20 ¾	16 5/8	10 25/64	51 11/64	32 1¼	19 ¾	51 21/64	12 15/32	76 263/64	89 3½	97 313/16	32 1¼	24 15/16	62 27/16	48 17/8	35 1,378	13300	7457	UK205+H2305 UK205+HE2305	T205	0,86	
UKT206+H2306 UKT206+HS2306 UKT206+HE2306	25 7/8 1	16 5/8	10 25/64	56 27/32	37 115/32	22 55/64	57 2¼	12 15/32	89 3½	102 41/64	113 429/64	37 129/64	28 13/32	70 2¾	53 23/32	38 1,496	18525	10735	UK206+H2306 UK206+HS2306 UK206+HE2306	T206	1,26	
UKT207+H2307 UKT207+HS2307	30 11/8	16 5/8	13 33/64	64 233/64	37 115/32	22 55/64	64 233/64	12 15/32	89 3½	102 41/64	129 55/64	37 129/64	30 13/16	78 35/64	59,5 211/32	43 1,693	24415	14630	UK207+H2307 UK207+HS2307	T207	2,50	
UKT208+H2308 UKT208+HE2308 UKT208+HS2308	35 1¼ 13/8	19 ¾	16 5/8	83 317/64	49 115/16	29 19/64	83 317/64	16 5/8	102 41/64	114 431/64	144 543/64	49 115/16	35 13/8	89 3½	69 223/32	46 1,811	27645	16910	UK208+H2308 UK208+HE2308 UK208+HS2308	T208	2,50	
UKT209+H2309 UKT209+HA2309 UKT209+HE2309 UKT209+HS2309	40 17/16 1½ 15/8	19 ¾	16 5/8	83 317/64	49 115/16	29 19/64	83 317/64	16 5/8	102 41/64	117 439/64	144 543/64	49 115/16	35 13/8	87 327/64	69 223/32	50 1,969	32395	20235	UK209+H2309 UK209+HA2309 UK209+HE2309 UK209+HS2309	T209	2,51	
UKT210+H2310 UKT210+HS2310 UKT210+HA2310 UKT210+HE2310	45 15/8 111/16 1¾	19 ¾	16 5/8	83 317/64	49 115/16	29 19/64	86 325/64	16 5/8	102 41/64	117 439/64	149 555/64	49 115/16	35 13/8	90 335/64	74,5 215/16	55 2,165	33345	22135	UK210+H2310 UK210+HS2310 UK210+HA2310 UK210+HE2310	T210	2,60	
UKT211+H2311 UKT211+HS2311 UKT211+HA2311 UKT211+HE2311	50 17/8 115/16 2	25 63/64	19 ¾	102 41/64	64 21/32	35 13/8	95 3¾	22 55/64	130 51/8	146 5¾	171 647/64	64 233/64	41 15/8	106 411/64	76 3	59 2,323	41230	27930	UK211+H2311 UK211+HS2311 UK211+HA2311 UK211+HE2311	T211	4,26	
UKT212+H2312 UKT212+HS2312	55 21/8	32 117/64	19 ¾	102 41/64	64 21/32	35 13/8	102 41/64	22 55/64	130 51/8	146 5¾	194 741/64	64 233/64	46 113/16	119 411/16	89 3½	62 2,441	49780	34390	UK212+H2312 UK212+HS2312	T212	5,02	
UKT213+H2313 UKT213+HA2313 UKT213+HE2313 UKT213+HS2313	60 23/16 2¼ 23/8	32 117/64	21 53/64	111 43/8	70 2¾	41 139/64	121 449/64	26 11/32	151 515/16	167 637/64	224 813/16	70 2¾	51 2	137 525/64	89 3½	65 2,559	54340	38095	UK213+H2313 UK213+HA2313 UK213+HE2313 UK213+HS2313	T213	6,56	
UKT215+H2315 UKT215+HA2315 UKT215+HE2315	65 27/16 2½	32 117/64	21 53/64	111 43/8	70 2¾	41 139/64	121 449/64	26 11/32	151 515/16	167 637/64	232 99/64	70 2¾	48 157/64	140 533/64	- -	73 2,874	64030	45885	UK215+H2315 UK215+HA2315 UK215+HE2315	T215	7,52	
UKT216+H2316 UKT216+HA2316 UKT216+HE2316	70 211/16 2¾	32 117/64	21 53/64	111 43/8	70 2¾	41 139/64	121 449/64	26 11/32	165 6½	184 7¼	235 9¼	70 2¾	51 2	140 533/64	- -	78 3,071	69065	50350	UK216+H2316 UK216+HA2316 UK216+HE2316	T216	8,56	
UKT217+H2317 UKT217+HA2317 UKT217+HE2317	75 215/16 3	38 1½	29 19/64	124 47/8	73 27/8	48 157/64	157 63/16	30 13/16	173 613/16	198 751/64	260 1015/64	73 27/8	54 21/8	162 63/8	- -	82 3,228	79800	58805	UK217+H2317 UK217+HA2317 UK217+HE2317	T217	11,38	

Hülsen HA; HE; HS mit Zollgewinde
Втулки HA; HE; HS с дюймовой резьбой

UKTX Mittlere Reihe - Средняя серия



Typ Тип	Abmessungen - Размеры															Tragzahlen (N) Коэффициент нагрузки (H)		Lager Подшипник	Gehäuse Корпус	Gewicht Вес	
	d	o	g	p	q	s	b	k	e	a	w	l	j	h	B ₁	dynamisch C _d Динамическая C _d	statisch C _s Статическая C _s				kg
	mm/Zoll - мм/дюйм																				
UKTX05+H2305 UCTX05+HE2305	20 ¾	16 5/8	12 15/32	56 27/32	37 129/64	22 55/64	57 2¼	12 0,472	89 3½	102 41/64	113 429/64	28 13/32	37 129/64	70 2¾	35 1,378	18525	10735	UKX05+H2305 UKX05+HE2305	TX05	1,3	
UKTX06+H2306 UKTX06+HS2306 UKTX06+HE2306	25 7/8 1	16 5/8	15 19/32	64 233/64	37 129/64	22 55/64	64 233/64	12 0,472	89 3½	102 41/64	129 55/64	30 13/16	37 129/64	78 35/64	38 1,496			24415	14630		UKX06+H2306 UKX06+HS2306 UKX06+HE2306
UKTX07+H2307 UKTX07+HS2307	30 11/8	19 ¾	17 21/32	83 317/64	49 115/16	29 19/64	83 317/64	16 0,630	102 41/64	114 431/64	144 543/64	36 113/32	49 115/16	88 315/32	43 1,811	27645	16910			UKX07+H2307 UKX07+HS2307	TX07
UKTX08+H2308 UKTX08+HE2308 UKTX08+HS2308	35 1¼ 13/8	19 ¾	17 21/32	83 317/64	49 115/16	29 19/64	83 317/64	16 0,630	102 41/64	117 439/64	144 543/64	36 113/32	49 115/16	87 327/64	46 1,811			32395	20235	UKX08+H2308 UKX08+HE2308 UKX08+HS2308	TX08
UKTX09+H2309 UKTX09+HA2309 UKTX09+HE2309 UKTX09+HS2309	40 17/16 1½ 15/8	19 ¾	18 23/32	83 317/64	49 115/16	29 19/64	86 325/64	16 0,630	102 41/64	117 439/64	151 515/16	38 1½	49 115/16	92 35/8	50 1,969	33345	22135			UKX09+H2309 UKX09+HA2309 UKX09+HE2309 UKX09+HS2309	TX09
UKTX10+H2310 UKTX10+HS2310 UKTX10+HA2310 UKTX10+HE2310	45 15/8 111/16 1¾	25 63/64	21 13/16	102 41/64	64 21/32	35 13/8	95 3¾	22 0,866	130 51/8	146 5¾	171 647/64	42 121/32	64 233/64	106 411/64	55 2,165			41230	27930	UKX10+H2310 UKX10+HS2310 UKX10+HA2310 UKX10+HE2310	TX10
UKTX11+H2311 UKTX11+HS2311 UKTX11+HA2311 UKTX11+HE2311	50 17/8 115/16 2	32 117/64	21 13/16	102 41/64	64 21/32	35 13/8	102 41/64	22 0,866	130 51/8	146 5¾	194 741/64	44 123/32	64 233/64	119 411/16	59 2,323	49780	34390			UKX11+H2311 UKX11+HS2311 UKX11+HA2311 UKX11+HE2311	TX11
UKTX12+H2312 UKTX12+HS2312	55 21/8	32 117/64	23 29/32	111 43/8	70 2¾	41 139/64	121 449/64	26 1,024	151 515/16	167 637/64	224 813/16	48 157/64	70 2¾	137 525/64	62 2,441			54340	38095	UKX12+H2312 UKX12+HS2312	TX12
UKTX13+H2313 UKTX13+HA2313 UKTX13+HE2313 UKTX13+HS2313	60 23/16 2¼ 23/8	32 117/64	23 29/32	111 43/8	70 2¾	41 139/64	121 449/64	26 1,024	151 515/16	167 637/64	224 813/16	48 157/64	70 2¾	137 525/64	65 2,559	59090	41895			UKX13+H2313 UKX13+HA2313 UKX13+HE2313 UKX13+HS2313	TX13
UKTX15+H2315 UKTX15+HA2315 UKTX15+HE2315	65 27/16 23/8	32 117/64	23 29/32	111 43/8	70 2¾	41 139/64	121 449/64	26 1,024	151 515/16	167 637/64	232 99/64	48 157/64	70 2¾	140 533/64	73 3,559			69065	50350	UKX15+H2315 UKX15+HA2315 UKX15+HE2315	TX15
UKTX16+H2316 UKTX16+HA2316 UKTX16+HE2316	70 211/16 2¾	38 1½	30 13/16	124 47/8	73 27/8	48 157/64	157 63/16	28 1,102	173 613/16	198 751/64	260 1015/64	54 21/8	73 27/8	162 63/8	78 3,071	79800	58805			UKX16+H2316 UKX16+HA2316 UKX16+HE2316	TX16
UKTX17+H2317 UKTX17+HA2317 UKTX17+HS2317	75 215/16 3	38 1½	30 13/16	124 47/8	73 27/8	48 157/64	157 63/16	28 1,102	173 613/16	198 751/64	260 1015/64	54 21/8	73 27/8	162 63/8	82 3,228			91295	67925	UKX17+H2317 UKX17+HA2317 UKX17+HE2317	TX17

Hülsen HA; HE; HS mit Zollgewinde
Втулки HA; HE; HS с дюймовой резьбой