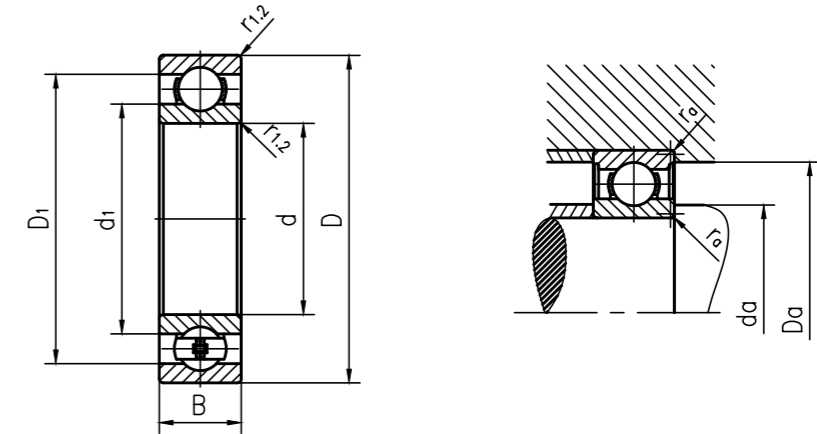


Deep Groove Ball Bearings

Single row deep groove ball bearings

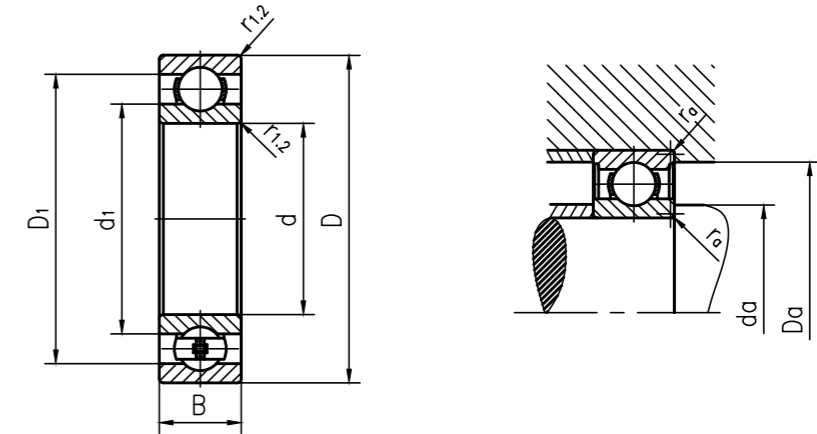


Type Bearing both sides of open or closed seal	One side closed seal	Main dimensions			Dimensions					Shoulder and chamfer dimensions			
		d	D	B	d ₁ ≈	d ₂ ≈	D ₁ ≈	D ₂ ≈	r _{1,2} Min.	d _a Min.	d _a Max.	D _a Max.	r _a Max.
		mm			mm					mm			
-	-												
61944	-	220	300	38	245	-	275	-	2.1	230	-	290	2
61944 MA	-	220	300	38	245	-	276	-	2.1	230	-	290	2
16044	-	220	340	37	261	-	298	-	2.1	230	-	330	2
6044	-	220	340	56	258	-	302	-	3	233	-	327	2.5
6044 M	-	220	340	56	258	-	302	-	3	233	-	327	2.5
6244	-	220	400	65	282	-	335	-	4	237	-	383	3
6244 M	-	220	400	65	282	-	335	-	4	237	-	383	3
6344 M	-	220	460	88	301	-	379	-	5	240	-	440	4
61848	-	240	300	28	259	-	281	-	2	249	-	291	2
61948	-	240	320	38	265	-	295	-	2.1	250	-	310	2
61948 MA	-	240	320	38	265	-	296	-	2.1	250	-	310	2
16048	-	240	360	37	279	-	318	-	2.1	250	-	350	2
16048 MA	-	240	360	37	279	-	321	-	2.1	250	-	350	2
6048	-	240	360	56	277	-	322	-	3	253	-	347	2.5
6048 M	-	240	360	56	277	-	322	-	3	253	-	347	2.5
-	-	240	440	72	309	-	371	-	4	257	-	423	3
6348 M	-	240	500	95	331	-	409	-	5	260	-	480	4
61852	-	260	320	28	279	-	301	-	2	269	-	311	2
61952	-	260	360	46	291	-	329	-	2.1	270	-	350	2
61952 MA	-	260	360	46	291	-	330	-	2.1	270	-	350	2
16052	-	260	400	44	307	-	351	-	3	273	-	387	2.5
16052 MA	-	260	400	44	307	-	353	-	3	273	-	387	2.5
6052	-	260	400	65	304	-	356	-	4	277	-	383	3
6052 M	-	260	400	65	304	-	356	-	4	277	-	383	3
6252 M	-	260	480	80	337	-	403	-	5	280	-	460	4
61856	-	280	350	33	302	-	327	-	2	289	-	341	2
61856MA	-	280	350	33	302	-	328	-	3.8	289	-	341	2
61956	-	280	380	46	311	-	349	-	2.1	291	-	369	2
61956MA	-	280	380	46	311	-	350	-	2.1	291	-	369	2
16056	-	280	420	44	327	-	371	-	3	293	-	407	2.5
16056MA	-	280	420	44	327	-	374	-	3	293	-	407	2.5
6056	-	280	420	65	324	-	376	-	4	296	-	404	3
6056M	-	280	420	65	324	-	376	-	4	296	-	404	3
6256M	-	280	500	80	355	-	425	-	5	300	-	480	4

Type Bearing both sides of open or closed seal	One side closed seal	Weight	Basic load rating		Fatigue load limit	Rated speed reference speed	Maximum speed	Calculate the coefficient	
			Dynamic	Static				K _r	f ₀
			C	C ₀	P _u	r/min			
		kg	kN						
-	-								
61944	-	6.8	158.55	189.00	4.99	4515	2730	0.02	17
61944 MA	-	7.95	158.55	189.00	4.99	4515	3780	0.02	17
16044	-	11.5	182.70	214.20	5.46	4200	2520	0.02	17
6044	-	16	259.35	304.50	7.72	4200	2520	0.025	16
6044 M	-	18.5	259.35	304.50	7.72	4200	3360	0.025	16
6244	-	33.5	310.80	383.25	9.24	3360	2100	0.025	15
6244 M	-	36.5	310.80	383.25	9.24	3360	3150	0.025	15
6344 M	-	73	430.50	546.00	12.60	3150	2730	0.03	14
61848	-	3.9	113.40	157.50	3.99	4200	2730	0.015	17
61948	-	7.3	166.95	210.00	5.36	4200	2520	0.02	17
61948 MA	-	8.55	166.95	210.00	5.36	4200	3360	0.02	17
16048	-	12.5	213.15	267.75	6.62	3780	2310	0.02	17
16048 MA	-	14	213.15	267.75	6.62	3780	3150	0.02	17
6048	-	17	267.75	330.75	8.19	3780	2310	0.025	16
6048 M	-	19.5	267.75	330.75	8.19	3780	3150	0.025	16
-	-	6248 M	375.90	488.25	11.34	3150	2730	0.025	15
6348 M	-	97	464.10	614.25	13.55	2730	2520	0.03	15
61852	-	4.15	116.55	171.15	4.2	3990	2520	0.015	17
61952	-	12	222.60	283.50	6.88	3780	2310	0.02	17
61952 MA	-	14.5	222.60	283.50	6.88	3780	3150	0.02	17
16052	-	18	249.90	325.50	7.56	3360	2100	0.02	16
16052 MA	-	22.5	249.90	325.50	7.56	3360	2940	0.02	16
6052	-	25	305.55	393.75	9.24	3360	2100	0.025	16
6052 M	-	29	305.55	393.75	9.24	3360	2940	0.025	16
6252 M	-	65.5	409.50	556.50	12.39	2730	2520	0.025	15
61856	-	6.25	144.90	210.00	4.99	3570	2310	0.015	17
61856MA	-	7.25	144.90	210.00	4.99	3570	2940	0.015	17
61956	-	12	226.80	299.25	7.04	3360	2100	0.02	17
61956MA	-	15.5	226.80	299.25	7.04	3360	2940	0.02	17
16056	-	19	254.10	351.75	7.88	3150	1995	0.02	17
16056MA	-	23.5	254.10	351.75	7.88	3150	2730	0.02	17
6056	-	26	317.10	425.25	9.77	3150	1995	0.025	16
6056M	-	31	317.10	425.25	9.77	3150	2730	0.025	16
6256M	-	72	444.15	630.00	13.55	2730	2310	0.025	15

Deep Groove Ball Bearings

Single row deep groove ball bearings

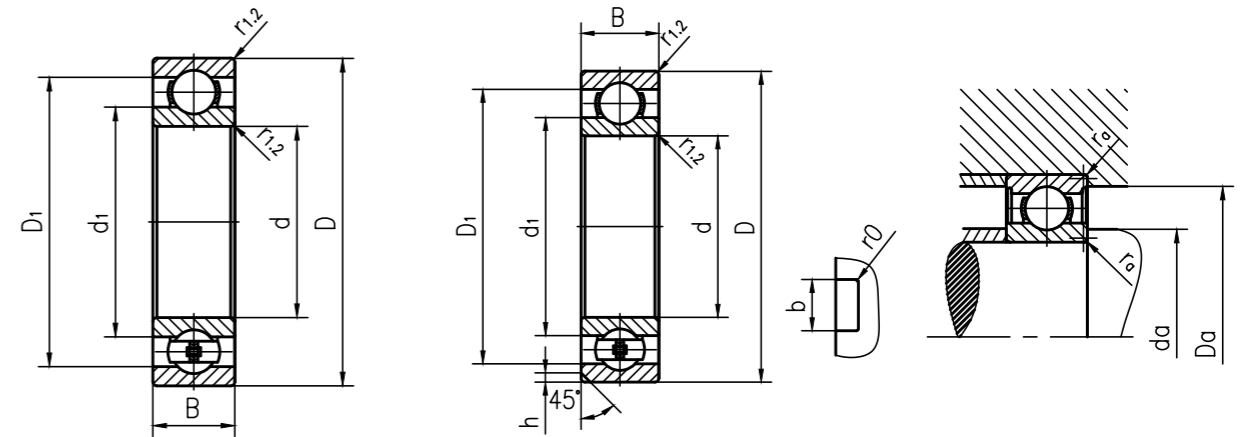


Type Bearing both sides of open or closed seal	One side closed seal	Main dimensions			Dimensions					Shoulder and chamfer dimensions			
		d	D	B	d ₁ ≈	d ₂ ≈	D ₁ ≈	D ₂ ≈	r _{1,2} Min.	d _a Min.	d _a Max.	D _a Max.	r _a Max.
-	-	mm			mm					mm			
61860	-	300	380	38	325	-	355	-	2.1	309	-	371	2
61860MA	-	300	380	38	325	-	356	-	2.1	309	-	371	2
61960	-	300	420	56	338	-	382	-	3	313	-	407	2.5
61960MA	-	300	420	56	338	-	384	-	3	313	-	407	2.5
16060MA	-	300	460	50	352	-	407	-	4	315	-	445	3
6060M	-	300	460	74	351	-	409	-	4	315	-	445	3
6260M	-	300	540	85	383	-	457	-	5	320	-	520	4
61864	-	320	400	38	345	-	375	-	2.1	332	-	388	2
61864MA	-	320	400	38	345	-	376	-	2.1	332	-	388	2
61964MA	-	320	440	56	357	-	403	-	3	333	-	427	2.5
16064MA	-	320	480	50	372	-	428	-	4	335	-	465	3
6064M	-	320	480	74	370	-	431	-	4	335	-	465	3
61868	-	340	420	38	365	-	395	-	2.1	352	-	408	2
61868MA	-	340	420	38	365	-	396	-	2.1	352	-	408	2
61968MA	-	340	460	56	378	-	422	-	3	353	-	447	2.5
16068MA	-	340	520	57	398	-	462	-	4	355	-	505	3
6068M	-	340	520	82	397	-	463	-	5	360	-	500	4
61872MA	-	360	440	38	385	-	415	-	2.1	372	-	428	2
61972MA	-	360	480	56	398	-	443	-	3	373	-	467	2.5
16072MA	-	360	540	57	418	-	482	-	4	375	-	525	3
6072M	-	360	540	82	416	-	485	-	5	378	-	522	4
61876MA	-	380	480	46	412	-	449	-	2.1	392	-	468	2
61976MA	-	380	520	65	425	-	476	-	4	395	-	505	3
16076MA	-	380	560	57	443	-	497	-	4	395	-	545	3
6076M	-	380	560	82	437	-	503	-	5	400	-	542	4
61880MA	-	400	500	46	432	-	471	-	2.1	412	-	488	2
61980MA	-	400	540	65	445	-	496	-	4	415	-	525	3
6080M	-	400	600	90	463	-	537	-	5	418	-	582	4
61884MA	-	420	520	46	452	-	491	-	2.1	432	-	508	2
61984MA	-	420	560	65	465	-	516	-	4	435	-	545	3
6084M	-	420	620	90	482	-	557	-	5	438	-	602	4
61888MA	-	440	540	46	472	-	510	-	2.1	452	-	528	2
61988MA	-	440	600	74	492	-	549	-	4	455	-	585	3
6088M	-	440	650	94	506	-	584	-	6	463	-	627	5

Type Bearing both sides of open or closed seal	One side closed seal	Weight	Basic load rating		Fatigue load limit	Rated speed reference speed	Maximum speed	Calculate the coefficient	
			Dynamic	Static				K _r	f ₀
-	-	kg	kN			r/min	-		
61860	-	8.9	180.60	257.25	5.88	3360	2100	0.015	17
61860MA	-	10.5	180.60	257.25	5.88	3360	2730	0.015	17
61960	-	19	283.50	393.75	8.72	3150	1995	0.02	16
61960MA	-	24.5	283.50	393.75	8.72	3150	2520	0.02	16
16060MA	-	32	300.30	425.25	9.24	2940	1890	0.02	16
6060M	-	44	375.90	525.00	11.34	2940	2520	0.025	16
6260M	-	88.5	485.10	703.50	14.39	2520	2100	0.025	15
61864	-	9.5	180.60	267.75	5.99	3150	1995	0.015	17
61864MA	-	11	180.60	267.75	5.99	3150	2520	0.015	17
61964MA	-	25.5	289.80	420.00	9.08	2940	2520	0.02	16
16064MA	-	34	295.05	425.25	9.08	2730	2310	0.02	17
6064M	-	46	389.55	567.00	11.97	2730	2310	0.025	16
61868	-	10	186.90	288.75	6.3	2940	1890	0.015	17
61868MA	-	11.5	186.90	288.75	6.30	2940	2520	0.015	17
61968MA	-	26.5	295.05	446.25	9.45	2730	2310	0.02	17
16068MA	-	45	362.25	546.00	11.13	2520	2100	0.02	16
6068M	-	62	444.15	672.00	13.86	2520	2310	0.025	16
61872MA	-	12	191.10	299.25	6.41	2730	2310	0.015	17
61972MA	-	28	305.55	472.50	9.61	2730	2310	0.02	17
16072MA	-	49	368.55	577.50	11.55	1890	1470	0.02	16
6072M	-	64.5	464.10	729.75	14.70	2520	1995	0.025	16
61876MA	-	20	254.10	409.50	8.4	2520	2100	0.015	17
61976MA	-	40	354.90	567.00	11.34	2520	1995	0.02	17
16076MA	-	51	395.85	651.00	12.81	2310	1470	0.02	17
6076M	-	70.5	457.80	729.75	14.39	2310	1890	0.025	16
61880MA	-	20.5	259.35	425.25	8.56	2520	1995	0.015	17
61980MA	-	41.5	362.25	598.50	11.76	2310	1890	0.02	17
6080M	-	87.5	546.00	908.25	17.12	2100	1785	0.025	16
61884MA	-	21.5	263.55	446.25	8.72	2310	1890	0.015	17
61984MA	-	43	368.55	630.00	11.97	2310	1890	0.02	17
6084M	-	91.5	532.35	924.00	17.12	2100	1680	0.025	16
61888MA	-	22.5	267.75	462.00	8.93	2310	1890	0.015	17
61988MA	-	60.5	430.50	756.00	13.86	2100	1680	0.02	17
6088M	-	105	580.65	1013.25	18.48	1995	1575	0.025	16

Deep Groove Ball Bearings

Single row deep groove ball bearings

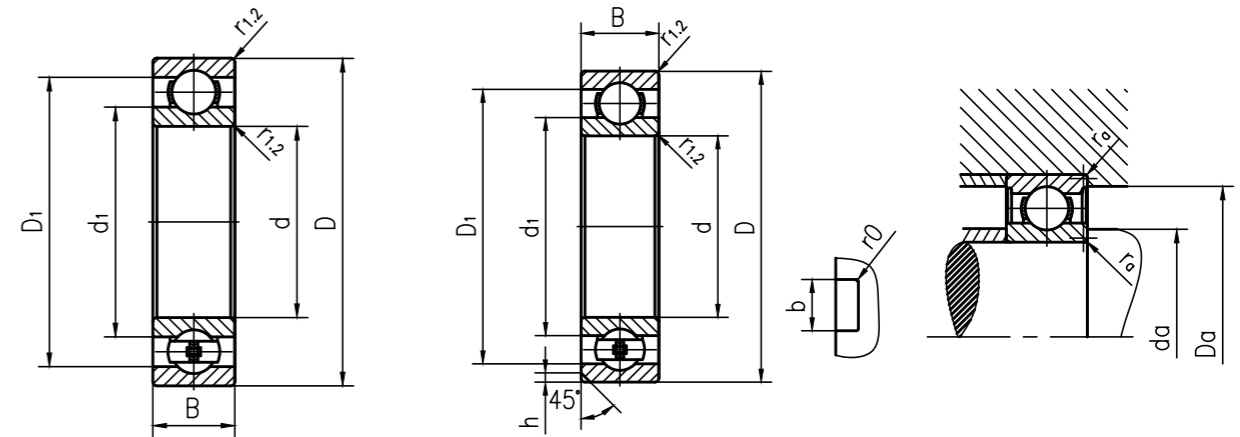


Type Bearing both sides of open or closed seal	One side closed seal	Main dimensions			Dimensions					Shoulder and chamfer dimensions			
		d	D	B	d ₁ ≈	d ₂ ≈	D ₁ ≈	D ₂ ≈	r _{1,2} Min.	d _a Min.	d _a Max.	D _a Max.	r _a Max.
		mm			mm					mm			
-	-												
61892MA	-	460	580	56	498	-	542	-	3	473	-	567	2.5
61992MA	-	460	620	74	511	-	569	-	4	476	-	604	3
6092MB	-	460	680	100	528	-	614	-	6	483	-	657	5
61896MA	-	480	600	56	518	-	564	-	3	493	-	587	2.5
61996MA	-	480	650	78	535	-	595	-	5	498	-	632	4
6096MB	-	480	700	100	550	-	630	-	6	503	-	677	5
618/500MA	-	500	620	56	538	-	582	-	3	513	-	607	2.5
619/500MA	-	500	670	78	555	-	617	-	5	518	-	652	4
60/500N1MAS	-	500	720	100	568	-	650	-	6	523	-	697	5
618/530MA	-	530	650	56	568	-	613	-	3	543	-	637	2.5
619/530MA	-	530	710	82	587	-	653	-	5	548	-	692	4
60/530N1MAS	-	530	780	112	612	-	700	-	6	553	-	757	5
618/560MA	-	560	680	56	598	-	644	-	3	573	-	667	2.5
619/560MA	-	560	750	85	622	-	689	-	5	578	-	732	4
60/560N1MAS	-	560	820	115	648	-	732	-	6	583	-	797	5
618/600MA	-	600	730	60	642	-	688	-	3	613	-	717	2.5
619/600MA	-	600	800	90	663	-	736	-	5	618	-	782	4
60/600MA	-	600	870	118	689	-	781	-	6	623	-	847	5
618/630MA	-	630	780	69	678	-	732	-	4	645	-	765	3
619/630N1MA	-	630	850	100	702	-	778	-	6	653	-	827	5
60/630N1MBS	-	630	920	128	725	-	825	-	7.5	658	-	892	6
618/670MA	-	670	820	69	718	-	772	-	4	685	-	805	3
619/670MA	-	670	900	103	745	-	825	-	6	693	-	877	5
60/670N1MAS	-	670	980	136	771	-	878	-	7.5	698	-	952	6
618/710MA	-	710	870	74	761	-	818	-	4	725	-	855	3
619/710MA	-	710	950	106	790	-	870	-	6	733	-	927	5
60/710MA	-	710	1030	140	811	-	928	-	7.5	738	-	1002	6
618/750MA	-	750	920	78	804	-	866	-	5	768	-	902	4
619/750MA	-	750	1000	112	835	-	919	-	6	773	-	977	5
60/750MA	-	750	1090	150	862	-	978	-	7.5	778	-	1062	6
618/800MA	-	800	980	82	857	-	922	-	5	818	-	962	4
619/800MA	-	800	1060	115	884	-	975	-	6	823	-	1037	5
60/800N1MAS	-	800	1150	155	914	-	1032	-	7.5	828	-	1122	6
618/850MA	-	850	1030	82	907	-	972	-	5	868	-	1012	4

Type Bearing both sides of open or closed seal	One side closed seal	Weight	Basic load rating		Fatigue load limit	Rated speed reference speed	Maximum speed	Calculate the coefficient	
			Dynamic	Static				K _r	f ₀
		kg	kN			r/min			
			C	C ₀	P _u				
-	-								
61892MA	-	35	334.95	598.50	11.13	2100	1680	0.015	17
61992MA	-	62.5	444.15	787.50	14.39	1995	1680	0.02	17
6092MB	-	120	611.10	1113.00	19.95	1890	1575	0.025	16
61896MA	-	36.5	341.25	630.00	11.34	1995	1680	0.015	17
61996MA	-	74	471.45	855.75	15	1890	1575	0.02	17
6096MB	-	125	648.90	1197.00	21	1785	1470	0.025	16
618/500MA	-	40.5	348.60	651.00	11.76	1890	1575	0.015	17
619/500MA	-	81.5	485.10	908.25	16	1785	1470	0.02	17
60/500N1MAS	-	135	635.25	1197.00	20.58	1680	1365	0.025	16
618/530MA	-	39.5	348.60	687.75	11.76	1785	1470	0.015	17
619/530MA	-	90.5	512.40	976.50	16	1680	1365	0.02	17
60/530N1MAS	-	185	682.50	1333.50	21.84	1575	1260	0.025	16
618/560MA	-	42	362.25	729.75	12.39	1680	1365	0.015	17
619/560MA	-	105	518.70	1029.00	17	1575	1260	0.02	17
60/560N1MAS	-	210	696.15	1438.50	23.1	1470	1260	0.025	16
618/600MA	-	52	382.20	803.25	13.13	1575	1260	0.015	17
619/600MA	-	125	614.25	1281.00	20.58	1470	1155	0.02	17
60/600MA	-	230	764.40	1575.00	24.78	1365	1155	0.025	16
618/630MA	-	73	464.10	1013.25	16.07	1470	1155	0.015	17
619/630N1MA	-	160	655.20	1407.00	22.26	1365	1155	0.02	17
60/630N1MBS	-	285	859.95	1848.00	28.35	1260	1050	0.025	16
618/670MA	-	83.5	464.10	1050.00	16.38	1365	1155	0.015	17
619/670MA	-	192	709.80	1575.00	23.52	1260	1050	0.02	17
60/670N1MAS	-	345	949.20	2142.00	31.5	1155	945	0.025	16
618/710MA	-	93.5	498.75	1155.00	17.43	1260	1050	0.015	17
619/710MA	-	220	696.15	1575.00	23.1	1155	945	0.02	17
60/710MA	-	382	1003.80	2310.00	33.08	1050	892.5	0.025	16
618/750MA	-	110	553.35	1312.50	19.22	1155	945	0.015	17
619/750MA	-	255	799.05	1890.00	27	1050	892.5	0.02	17
60/750MA	-	485	1044.75	2478.00	35.18	997.5	840	0.025	16
618/800MA	-	130	586.95	1438.50	20.27	1050	892.5	0.015	17
619/800MA	-	275	873.6	2142.00	29.93	997.5	840	0.02	17
60/800N1MAS	-	523	1060.5	2677.50	36.23	945	787.5	0.025	16
618/850MA	-	140	586.95	1501.50	20.58	997.5	787.5	0.015	17

Deep Groove Ball Bearings

Single row deep groove ball bearings



Type Bearing both sides of open or closed seal	One side closed seal	Main dimensions			Dimensions					Shoulder and chamfer dimensions			
		d	D	B	d_1 ≈	d_2 ≈	D_1 ≈	D_2 ≈	$r_{1.2}$ Min.	d_a Min.	d_a Max.	D_a Max.	r_a Max.
-	-	mm			mm					mm			
619/850MA	-	850	1120	118	937	-	1033	-	6	873	-	1097	5
618/900MA	-	900	1090	85	960	-	1029	-	5	918	-	1072	4
618/950MA	-	950	1150	90	1015	-	1084	-	5	968	-	1132	4
618/1000MA	-	1000	1220	100	1076	-	1145	-	6	1023	-	1197	5
618/1060MA	-	1060	1280	100	1132	-	1208	-	6	1083	-	1257	5
618/1120MA	-	1120	1360	106	1201	-	1278	-	6	1143	-	1337	5
618/1180MB	-	1180	1420	106	1262	-	1338	-	6	1203	-	1397	5
618/1320MA	-	1320	1600	122	1414	-	1506	-	6	1343	-	1577	5
618/1500TN	-	1500	1820	140	1606	-	1712	-	7.5	1528	-	1792	6

Type Bearing both sides of open or closed seal	One side closed seal	Weight	Basic load rating		Fatigue load limit	Rated speed reference speed	Maximum speed	Calculate the coefficient	
			Dynamic	Static				K_r	f_0
-	-	kg	kN			r/min	-		
619/850MA	-	320	894.60	2226.00	30	892.5	787.5	0.02	17
618/900MA	-	167	648.90	1680.00	22.68	892.5	735	0.015	18
618/950MA	-	197	668.85	1816.50	23.52	840	703.5	0.015	18
618/1000MA	-	245	668.85	1890.00	23.94	787.5	630	0.015	17
618/1060MA	-	260	764.40	2226.00	27.83	703.5	588	0.015	18
618/1120MA	-	315	778.05	2310.00	27.83	661.5	556.5	0.015	18
618/1180MB	-	337	799.05	2478.00	28.88	588	504	0.015	18
618/1320MA	-	500	1003.80	3307.50	37.28	504	420	0.015	18
618/1500TN	-	638	1228.50	4357.50	45.15	399	252	0.015	18