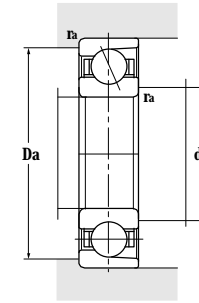
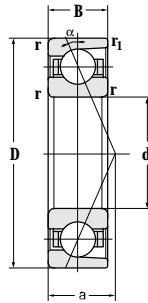


Single-row Angular Contact Ball Bearing

d 110~130 mm

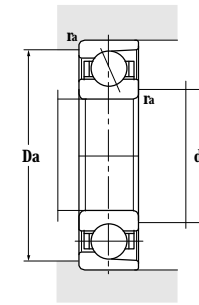
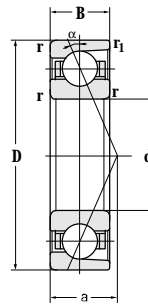


Principal dimensions					Basic load ratings		Limit speed ratings		
d	D	B	r	r ₁	C _r	C _{or}	Grease	Oil	
mm					kN		r/min		
110	200	38	2.1	1.1	185	171	5000	7100	
	200	38	2.1	1.1	185	171	4000	5700	
	200	38	2.1	1.1	185	171	5000	7100	
	200	38	2.1	1.1	176	164	3600	4800	
	200	38	2.1	1.1	176	164	3600	4800	
	200	38	2.1	1.1	176	164	2900	3800	
	200	38	2.1	1.1	153	144	2600	3400	
	240	50	3	1.1	191	240	3600	4800	
	240	50	3	1.1	239	231	2600	3400	
	240	50	3	1.1	213	212	2200	3000	
	240	50	3	1.1	213	212	2200	3000	
	240	50	3	1.1	213	212	1800	2400	
	240	50	3	1.1	213	212	1800	2400	
	120	180	28	2	1	100	107	3600	5000
180		28	2	1	100	107	3600	5000	
215		40	2.1	1.1	190	184	3200	4500	
215		40	2.1	1.3	247	184	2600	3600	
215		40	2.1	1.1	198	192	2200	3200	
215		40	1.3	2.1	204	239	2200	3200	
215		40	2.1	1.1	190	184	2200	3200	
260		55	3	1.1	251	262	1600	2200	
260		55	3	1.1	278	288	3400	4000	
260		55	3	1.1	268	277	1800	2400	
260		55	3	1.1	268	277	1800	2400	
260		55	3	1.1	265	269	2200	3000	
130		200	33	2	1	129	137	5400	6500
		200	33	2	1.1	108	118	4500	5000
	230	40	3	1.1	207	209	2400	3200	

Designations	Contact points a	Abutment and fillet dimensions			Weight kg
		damax	Damax	ramax	
mm					
7222CM	39.8	122	188	2	5.03
7222CJ	39.8	122	188	2	4.14
7222C	39.8	122	188	2	4.07
7222ACM	55.1	122	188	2	4.65
7222AC	55.1	122	188	2	4.07
7222ACJ	55.1	122	188	2	4.14
7222BM	84	122	188	2	3.95
7322CM	48.4	124	210	2.5	9.67
7322ACM	65.8	124	226	2.5	9.97
7322BM	99.3	124	226	2.5	11.5
7322BM/YA8	98.4	124	226	2.5	11.7
7322B	99.3	124	226	2.5	9.84
B7322BQ1	99.2	124	226	2.5	11.4
7024ACM	49	130	170	2	2.62
7024AC	49	130	170	2	2.31
7224ACM	59.1	132	203	2	6.17
B7224ACQ1/HASO	59	132	203	2	6.45
7224CM	90	132	203	2	6.07
B7224ACQ1/HASO	90	132	203	2	6.45
7224AC/P4	98.1	137	199	2	5.56
7324B	107.2	134	246	2.5	14.6
B7324CM	52.9	134	246	2.5	14.2
B7324ACM	71.8	134	246	2.5	14.2
B7324ACQ1	71.8	134	246	2.5	14.0
7324AC	71.8	134	246	2.5	13.7
7026C	38.6	140	190	2	3.33
7026BM	155	144	186	2	3.85
7226CM	44.1	144	216	2.5	7

Single-row Angular Contact Ball Bearing

d 130~160 mm

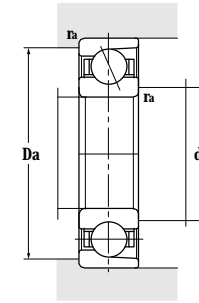
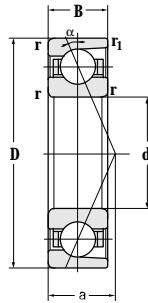


Principal dimensions					Basic load ratings		Limit speed ratings		
d	D	B	r	r ₁	C _r	C _{or}	Grease	Oil	
mm					kN		r/min		
130	230	40	3	1.1	196	200	2400	3200	
	230	40	3	1.1	196	200	1900	2600	
	230	40	3	1	170	175	2200	3000	
	280	58	4	1.5	250	268	1800	2400	
140	210	33	2	1	125	137	3200	4300	
	210	33	2	1	125	137	3200	4300	
	250	42	3	1.1	231	243	4200	5000	
	250	42	3	1.1	220	237	2200	3000	
	250	42	3	1.1	217	235	2200	3000	
	250	42	3	1.1	191	207	2000	2800	
	300	62	4	1.5	275	300	1600	2200	
	300	62	4	1.5	275	300	1600	2200	
	300	62	4	1.5	276	301	2100	2800	
	150	225	35	2.1	1.1	153	170	2400	3000
225		35	2.1	2.1	155	170	1900	2800	
225		35	2.1	2.1	155	170	5400	7300	
270		45	3	1.1	195	222	1700	2400	
270		45	3	1.1	242	268	2000	2800	
270		45	3	1.1	226	254	1600	2200	
320		65	4	1.5	359	429	1800	2400	
320		65	4	1.5	317	380	2300	2000	
160		229.5	33	2	2	93.5	128	2000	2400
		240	38	2.1	1.1	161	183	1800	2200
	240	38	2.1	1.1	161	183	1800	2200	
	240	38	2.1	1.1	161	183	1800	2200	
	240	38	1.1	2.1	160	237	4800	2600	
	290	48	3	1.1	263	304	2900	3600	
	290	48	3	1.1	250	289	1900	2600	
	340	68	4	1.5	337	409	1200	1600	
	340	68	4	4	355	420	1600	2200	

Designations	Contact points a	Abutment and fillet dimensions			Weight kg
		damax	Damax	ramax	
mm					
7226ACM	62	144	216	2.5	6.98
7226ACJ	62	144	216	2.5	6.23
7226BM	95.5	144	216	2.5	7.56
7326B	115.1	148	262	3	17.9
7028AC	57.3	150	200	2	3.46
7028ACM	57.3	150	200	2	4.14
7228CM	47.1	154	236	2.5	8.31
7228ACM	66.5	154	236	2.5	8.43
B7228ACYQ1	68.5	154	236	2.5	8.70
7228BM	102.9	154	236	2.5	8.59
7328B	123.3	158	282	3	21.2
7328B/YA8	123.3	158	282	3	23.1
7328BA	123.3	158	282	3	21.6
7030ACM	61.2	162	213	2	4.80
7030AC	96	160	219	2	4.23
7030AC/P4	96	160	219	2	4.23
7230BM	111	164	256	2.5	11.7
7230AC	71.5	164	256	2.5	12.1
B7230AC	71.4	164	256	2.5	10.6
7330AC	87.6	168	302	3	25.8
7330B	131	168	302	3	26.2
72932X3BM	65.6	172	228	2	4.53
B7032ACQ1	65.6	172	228	2	5.74
B7032ACM	65.6	172	228	2	5.81
7032ACM	65.6	172	228	2	5.95
146132QT	103	171	229	2	5.74
7232C	54.1	174	276	2.5	14.5
7232AC	76.5	174	276	2.5	14.5
7332B	138.9	178	322	3	30.8
7332AC	106.2	178	322	3	37.7

Single-row Angular Contact Ball Bearing

d 160~200 mm

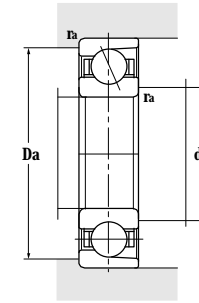
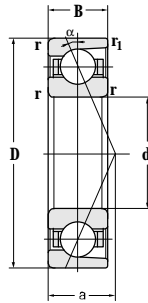


Principal dimensions					Basic load ratings		Limit speed ratings	
d	D	B	r	r ₁	C _r	C _{or}	Grease	Oil
mm					kN		r/min	
160	400	88	5	2	449	580	1100	1600
170	260	42	2.1	1.1	199	227	2000	2600
	260	42	2.1	1.1	199	227	2000	2600
	260	42	2.1	1.1	200	232	2000	2600
	260	42	2.1	1.1	209	181	1700	2400
	310	52	4	1.5	321	389	2800	3400
	310	52	4	1.5	306	371	1800	2400
	310	52	4	1.5	266	325	1600	2200
	310	52	4	1.5	282	343	1500	1900
	360	72	4	1.5	380	495	1350	1800
	360	72	4	1.5	430	491	1400	1900
180	250	33	2	1	160	196	3200	4300
	280	46	2.1	1.1	190	235	1650	2200
	320	52	4	1.5	333	418	2700	3200
	320	52	4	1.5	317	399	1700	2200
	380	75	4	1.5	404	536	1300	1800
	380	75	4	1.5	455	605	1300	1800
190	290	46	2.1	1.1	215	263	1800	2400
	340	55	4	1.5	257	430	1500	2000
	340	55	4	1.5	330	430	1700	2300
	400	78	5	2	430	600	1150	1600
200	310	51	2.1	1.1	264	331	1700	2200
	310	51	2.1	1.1	264	331	1700	2200
	360	58	4	1.5	363	487	2500	3000
	360	58	4	1.5	345	462	1500	2000
	360	58	4	1.5	345	462	1500	2000
	360	58	4	1.5	309	417	1300	1800
	420	80	5	2	450	660	1000	1500
	420	80	5	2	475	670	1100	1600

Designations	Contact points a	Abutment and fillet dimensions			Weight kg
		damax	Damax	ramax	
		mm			
7432BM	161	180	382	4	61.4
7034ACQ1	71.1	182	248	2	8.27
7034AC	71.1	182	248	2	7.98
7034AC/P4	71.1	182	248	2	7.02
46134QT	111	181	249	2	8.27
7234C	58.2	188	292	3	17.1
7234AC	82	188	292	3	17.1
7234B	126.7	187	293	3	17.8
B7234AC	82	188	292	3	17.4
7334B	147	188	342	3	34.5
7334AC	147	187	343	3	36.6
71936CM	45.3	192	235	2	4.88
7036B	119	192	268	2	10
7236C	59.5	198	302	3	17.9
7236AC	84.3	198	302	3	17.9
7336B	155	198	362	3	37.0
7336AC	156	197	363	3	42.5
7038AC	79	202	278	2	10.6
7238AC	89.3	222	324	3	22.4
7238AC/P4	89.3	222	324	3	22.4
7338B	164	212	380	4	48
7040AC	85	212	298	2	14.9
7040ACN1	85	212	298	2	14.8
7240C	66.5	218	342	3	25.2
7240AC	94.3	218	342	3	25.2
7240ACL3	94.3	218	342	3	24
7240B	146.5	218	342	3	25.8
7340B	170	222	400	4	53
7340AC	170	220	400	4	56.3

Single-row Angular Contact Ball Bearing

d 220~340 mm

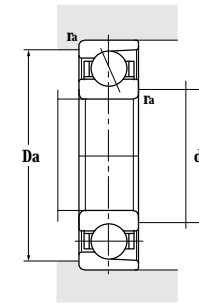
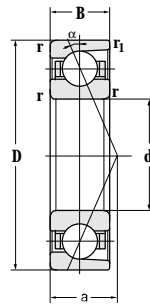


Principal dimensions					Basic load ratings		Limit speed ratings	
d	D	B	r	r ₁	C _r	C _{or}	Grease	Oil
mm					kN		r/min	
220	300	38	2.1	1.1	170	238	1500	2000
	300	38	2.1	1.1	171	238	1500	2000
	400	65	4	1.5	423	605	1100	1600
	460	88	5	2	480	730	1000	1400
240	320	48	2.1	1.1	185	250	1000	1500
	320	38	2.1	1.1	188	258	1100	1600
	360	56	3	1.1	250	380	1150	1600
	440	72	4	1.5	419	626	1000	1500
	440	72	4	1.5	435	650	1000	1500
	500	95	5	2	540	850	850	1200
260	360	46	2.1	1.1	260	380	900	1400
	360	46	2.1	1.1	275	405	1300	1800
	480	80	5	2	495	790	850	1200
280	380	46	2.1	1.1	268	405	800	1300
	420	65	4	1.5	310	500	900	1300
	420	65	4	1.5	315	500	900	1300
	500	80	5	2	500	840	800	1200
285	380	46	2.1	1.1	244	366	800	1200
300	460	74	4	1.5	410	690	950	1300
	460	74	4	1.5	360	620	900	1200
	460	74	4	1.5	400	665	950	1400
320	440	56	3	1.1	340	580	940	1400
	480	74	4	1.5	416	700	800	1100
340	420	38	2.1	1.1	196	325	950	1400
	460	56	3	1.1	330	575	900	1350
	520	82	5	2	510	1050	800	1100

Designations	Contact points a	Abutment and fillet dimensions			Weight kg
		d _{amax}	D _{amax}	r _{amax}	
mm					
71944C	129	229	291	2	8.34
71944CTA	129	229	291	2	7.02
7244AC	104.7	238	382	3	35.8
7344B	187	242	440	4	71
72948AC	89.3	252	308	2	10.0
71948AC	89.3	252	308	2	8.70
7048B	154	256	345	2.5	19.5
7248B	178.5	258	411	3	50.9
7248AC	180	257	423	3	51.1
7348B	203	262	481	4	89
71952AC	95.3	291	348	2	13.8
71952C	113	271	349	2	13.7
7252B	195	280	460	4	67
71956AC	99.9	292	368	2	15.7
7056B	179	296	406	3	31
7056BM	179	296	406	3	31
7256B	204	300	480	4	70.5
B71957Y	119	297	368	2	14.7
7060A	147	318	442	3	43
7060B	196	318	442	3	43
7060AC	147	317	443	3	46.5
71964AC	116	334	426	2.5	26.5
7064AC/P6	130	385	445	3	47.5
71868AC	129	351	409	2	11.4
71968AC	126	354	446	2.5	24.5
7068AC	141.3	360	500	4	61.0

Single-row Angular Contact Ball Bearing

d 340~460 mm

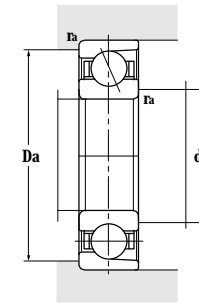
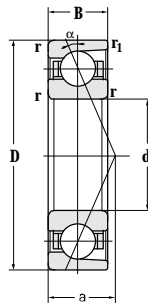


Principal dimensions					Basic load ratings		Limit speed ratings	
d	D	B	r	r ₁	C _r	C _{or}	Grease	Oil
mm					kN		r/min	
340	620	92	6	3	685	1320	700	1000
360	440	38	2.1	1.1	228	430	1800	2650
	480	56	3	1.1	340	630	900	1300
	480	56	3	1.1	330	620	850	1000
	480	56	3	3	360	630	800	1100
	480	56	3	1.1	290	540	850	1000
	540	82	5	1.3	532	965	600	1000
650	95	6	3	635	1240	700	950	
380	480	31	2	1	185	340	860	1200
	480	46	2.1	1.1	285	495	860	1200
	520	65	4	1.5	355	630	500	800
	520	65	4	4	415	760	800	1100
	560	82	5	2	495	940	810	1100
	560	82	5	2	455	880	760	1000
400	540	65	4	1.5	410	760	810	1100
	540	65	4	4	420	780	800	1100
	600	90	5	2	590	1170	740	1000
	600	90	5	2	515	1010	710	960
420	560	65	4	1.5	410	820	810	1100
	560	65	4	1.5	355	670	810	1100
	620	90	5	2	590	1160	710	960
	620	90	5	2	525	1040	680	910
440	600	74	4	1.5	495	1050	740	1000
	650	94	6	3	635	1300	710	960
	650	94	6	3	560	1170	630	840
460	580	37	2.1	1	259	550	760	1000
	580	56	3	3	362	760	760	1000
	580	56	3	1.1	335	635	750	1000
	620	74	4	1.5	495	1050	680	740
	680	100	6	3	675	1450	670	910

Designations	Contact points a	Abutment and fillet dimensions			Weight kg
		damax	Damax	ramax	
		mm			
7268B	248	366	593	5	128
71872AC	112	371	430	2	12.5
71972AC	126	374	468	2.5	29.5
71972A	149	374	468	2.5	29.5
71972ACM/P5	204	373	467	2.5	28.3
71972B	204	374	468	2.5	29.5
7072CF3	101.3	382	518	4	65.3
7272B	261	387	624	5	152
70876A	142	390	470	2	13.5
71876AC	123	392	470	2	18.5
71976B	221.4	398	502	3	42.1
71976AC	222	395	505	3	41.5
7076A	177	399	541	4	66
7076B	238	399	541	4	66
71980A	168	416	525	3	42.5
71980AC	168	415	525	3	44.3
7080A	189	418	580	4	91.5
7080B	255	418	580	4	91.5
71984A	174	436	545	3	46.5
71984B	238	436	545	3	46.5
7084A	195	439	601	4	97
7084B	263	440	602	4	93
71988AC	158	456	585	3	60
7088A	204	464	626	5	100
7088B	276	464	626	5	100
70892A	169	472	568	2	25.5
71892A	178	474	566	2.5	34.5
71892AC	169	471	569	2	34.8
71992AC	163	476	606	3	58.5
7092A	215	484	656	5	121

Single-row Angular Contact Ball Bearing

d 460~710 mm

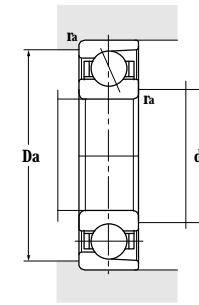
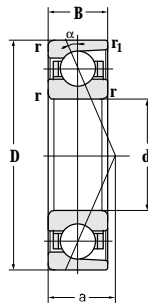


Principal dimensions					Basic load ratings		Limit speed ratings	
d	D	B	r	r ₁	C _r	C _{or}	Grease	Oil
mm					kN		r/min	
460	680	100	6	3	605	1280	610	800
480	700	100	6	3	685	1540	630	840
	700	100	6	3	610	1330	550	740
500	620	37	2.1	1.1	270	610	660	890
	620	56	3	1.1	390	810	600	850
	670	78	5	2	540	1210	620	850
	720	100	6	3	700	1610	610	810
	720	100	6	3	620	1410	550	760
530	650	56	3	1.1	380	890	620	840
	650	56	3	3	350	715	630	850
	710	82	5	2	600	1350	610	810
	780	112	6	3	815	1880	550	740
	780	112	6	3	725	1690	510	680
560	680	56	3	1.1	385	920	600	810
	750	85	5	2	580	1270	550	740
	820	115	6	3	880	2140	520	710
600	730	42	3	1.1	330	730	560	740
	730	60	3	1.1	405	880	720	760
	730	60	3	1.1	405	880	560	750
	800	90	5	2	700	1720	540	710
	870	118	6	3	865	2150	470	620
630	920	128	7.5	4	935	2460	420	550
670	820	69	4	1.5	540	1280	490	640
	980	136	7.5	4	1140	3180	470	630
710	870	74	4	1.5	530	1290	450	600
	870	74	4	1.5	530	1290	450	600
	870	74	4	4	555	1350	450	600

Designations	Contact points a	Abutment and fillet dimensions			Weight kg
		d _{amax}	D _{amax}	r _{amax}	
mm					
7092B	289	484	656	5	121
7096A	220	503	677	5	126
7096B	298	503	677	5	126
708/500A	180	512	610	2	27.5
718/500AMB	189.7	513	607	2.5	37.4
719/500A	208	520	651	4	77.5
70/500A	226	526	696	5	132
70/500B	306	526	696	5	132
718/530A	198	544	637	2.5	38.5
718/530AC	198	543	637	2.5	40.1
719/530AC	186	559	691	4	93
70/530A	245	554	756	5	178
70/530B	332	554	756	5	182
718/560A	207	574	668	2.5	42
719/560A	232	578	733	4	107
70/560A	257	584	798	5	193
708/600A	212	613	717	2.5	39
718/600ACM	185.1	613	717	2.5	54.6
718/600ACM-CB	222	613	717	2.5	54.6
719/600AC	208	620	781	4	123
70/600A	273	624	845	5	230
70/630A	240	659	891	6	275
718/670AC	208	686	804	3	77.5
70/670A	306	699	951	6	345
718/710A/YB2	265	725	855	3	99.9
718/710A/YB2-CB	265	725	855	3	99.9
718/710AC	265	725	855	3	96.4

Single-row Angular Contact Ball Bearing

d 710~1250 mm



Principal dimensions					Basic load ratings		Limit speed ratings	
d	D	B	r	r ₁	C _r	C _{or}	Grease	Oil
mm					kN		r/min	
710	950	106	6	3	830	2220	450	600
	1030	140	7.5	4	1160	3200	400	530
750	920	78	5	2	630	1850	400	530
	920	78	5	2	610	1510	400	530
	1090	150	7.5	4	1270	3630	350	470
800	1150	155	7.5	4	1320	3780	330	440
850	1030	82	5	2	675	1850	330	440
	1030	82	5	5	670	1800	340	450
	1220	165	7.5	4	1490	4600	290	400
900	1090	85	5	2	670	1830	300	400
	1280	170	7.5	4	1520	4980	270	370
950	1360	180	7.5	4	1590	5150	250	350
1000	1220	100	6	3	830	2460	260	360
	1420	185	7.5	4	1590	5450	210	310
1060	1500	195	9.5	5	1640	5650	200	310
1120	1360	106	6	3	1030	3700	190	290
	1580	200	9.5	5	1680	5800	180	280
1180	1420	106	6	4	865	3650	100	200
	1660	212	9.5	5	1700	6000	170	230
1250	1500	80	6	3	780	2650	180	250
	1500	112	6	3	1110	3900	180	250
	1750	218	9.5	5	1740	6500	160	220
	1750	218	9.5	9.5	1670	5900	160	220

Designations	Contact points a	Abutment and fillet dimensions			Weight kg
		d _{amax}	D _{amax}	r _{amax}	
mm					
719/710AC 70/710A	247	734	926	5	200
	321	739	1000	6	375
718/750AC 718/750A 70/750A	234	768	901	4	112
	234	768	902	4	115
	341	779	1062	6	450
70/800A	359	830	1120	6	510
718/850A 718/850AC 70/850A	312	869	1011	4	141
	312	868	1012	4	140
	381	880	1191	6	605
718/900ACF1 70/900A	274.5	944	1046	4	163
	400	930	1251	6	675
70/950A	424	979	1331	6	800
718/1000A 70/1000A	370	1023	1197	5	239
	442	1029	1390	6	905
70/1060A	467	1095	1465	8	1060
718/1120A 70/1120A	411	1145	1336	5	325
	497	1155	1545	8	1160
718/1180CAF1 70/1180A	356	1225	1377	5	329
	516	1215	1625	8	1340
708/1250A 718/1250A 70/1250A 70/1250BM/P5	437	1275	1476	5	300
	453	1275	1476	5	395
	542	1286	1715	8	1580
	542	1284	1716	8	1738