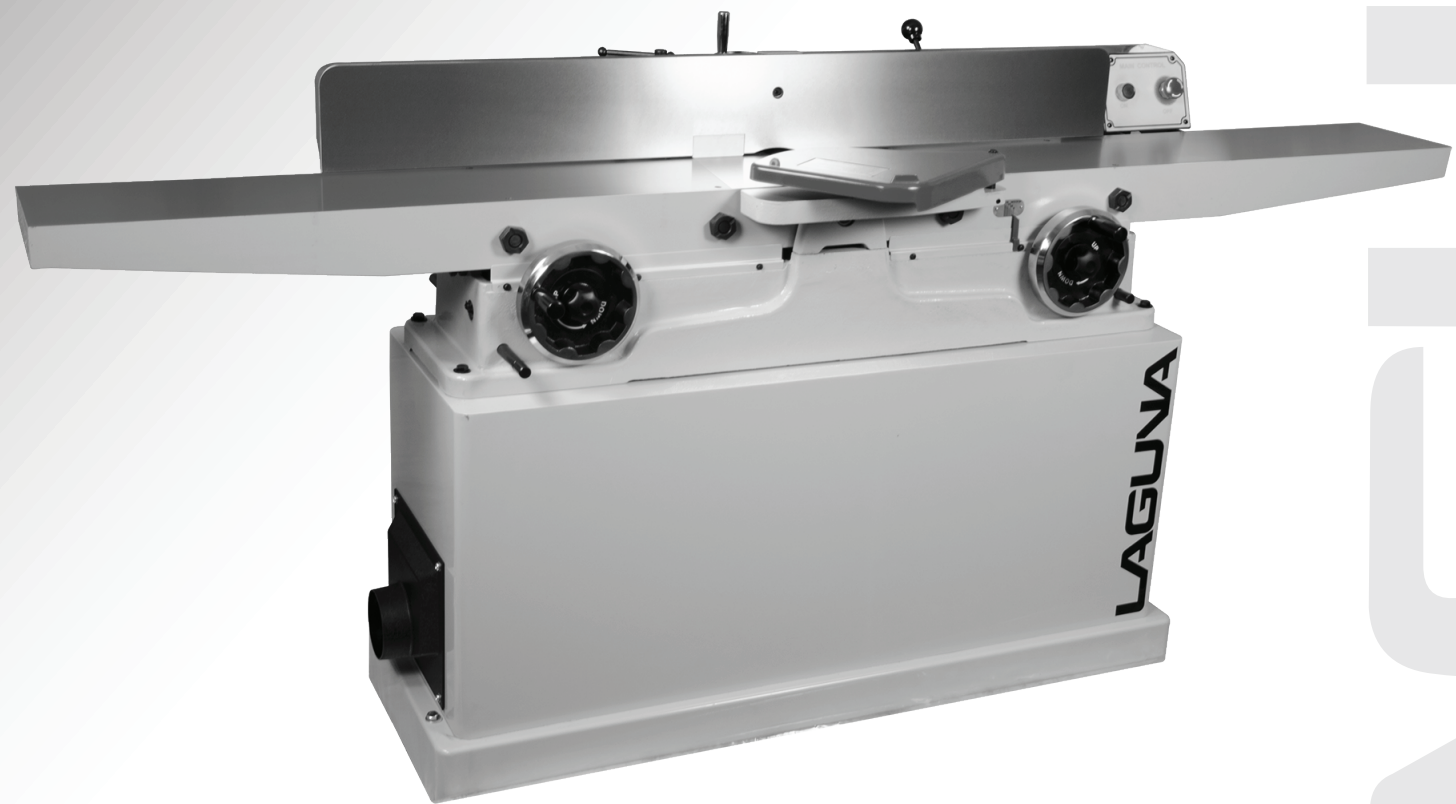


8" Jointer Parallelogram Manual



LAGUNA

LAGUNA TOOLS
2072 Alton Parkway
Irvine, California 92606
Ph: 800.234.1976
www.lagunatools.com

Model Number: MJOIN 8020-0130

© 2018, Laguna Tools, Inc. LAGUNA® and the LAGUNA Logo® are the registered trademarks of Laguna Tools, Inc. All rights reserved.

Table of contents

	Page number
Safety Rules	4
Warranty	5
Noise emission	6
Specification sheet	6
Receiving your jointer	6
Introduction to your jointer	6
What you receive with jointer	7
Parts of the jointer	7
Where to locate your jointer	9
Unpacking your jointer	9
Assembly and set up	9
Running & adjusting the jointer	11
Maintenance and troubleshooting	14
Exploded view drawings	17

Safety Rules

As with all machinery there are certain hazards involved with the operation and use. Using it with caution will considerably lessen the possibility of personal injury. However, if normal safety precautions are overlooked or ignored, personal injury to the operator may result. If you have any questions relative to the installation and operation, do not use the equipment until you have contacted your supplying distributor.

Read carefully before operating the machine.

- 1. Keep the working area clean and be sure adequate lighting is available.**
- 2. Do not wear loose clothing, gloves, bracelets, necklaces or ornaments. Wear face, eye, respiratory and body protection devices as indicated for the operation or environment.**
- 3. Be sure that the power is disconnected from the machine before tools are serviced or an attachment is to be fitted or removed.**
- 4. Never leave the machine with the power on.**
- 5. Do not use dull, gummy or cracked cutting tools.**
- 6. Be sure that the keys and adjusting wrenches have been removed and all the nuts and bolts are secured.**

Limited Warranty

New machines and accessories sold by Laguna Tools carry a one-year warranty effective from the date of shipping. Machines sold through dealers must be registered with Laguna Tools within 30 days of purchase to be covered by this warranty. Laguna Tools guarantees all new machines and accessories sold to be free of manufacturers' defective workmanship, parts and materials. We will repair or replace, without charge, any parts determined by Laguna Tools, Inc. to be a manufacturer's defect. We require that the defective item/part be returned to Laguna Tools with the complaint. Any machines returned to Laguna Tools must be returned with packaging in the same manner in which it was received. If a part or blade is being returned it must have adequate packaging to ensure no damage is received during shipping. In the event the item/part is determined to be damaged due to lack of maintenance, cleaning or misuse/abuse, the customer will be responsible for the cost to replace the item/part, plus all related shipping charges. This limited warranty does not apply to natural disasters, acts of terrorism, normal wear and tear, product failure due to lack of maintenance or cleaning, damage caused by accident, neglect, lack of or inadequate dust collection, misuse/abuse or damage caused where repair or alterations have been made or attempted by others.

Laguna Tools, Inc. is not responsible for additional tools or modifications sold or performed (other than from/by Laguna Tools, Inc.) on any Laguna Tools, Inc. machine. Warranty maybe voided upon the addition of such described tools and/or modifications, determined on a case-by-case basis.

Software purchased through Laguna Tools Inc. is not covered under this warranty and all technical support must be managed through the software provider. Software is non-refundable.

Normal user alignment, adjustment, tuning and machine settings are not covered by this warranty. It is the responsibility of the user to understand basic machinery operation, settings and procedures and to properly maintain the equipment in accordance with the standards provided by the manufacturer.

Parts, under warranty, are shipped at Laguna Tools, Inc.'s cost either by common carrier, FEDEX ground service or a similar method. Technical support to install replacement parts is primarily provided by phone, fax, e-mail or Laguna Tools Customer Support Website. The labor required to install replacement parts is the responsibility of the user.

Laguna Tools is not responsible for damage or loss caused by a freight company or other circumstances not in our control. All claims for loss or damaged goods must be notified to Laguna Tools within twenty-four hours of delivery. Please contact our Customer Service Department for more information.

Only **new** machines sold to the original owner are covered by this warranty. For warranty repair information, **call 1-800-332-4094**.



Noise emission

Notes concerning noise emission

Given that there exists a relationship between noise level and exposure times, it is not precise enough to determine the need for supplementary precautions. The factors affecting the true level of exposure to operators are clearly the amount of time exposed, the characteristics of working environment other sources of dust and noise etc. For example, adjacent machines in other words the level of ambient noise. It is possible that exposure level limits will vary from country to country.

Specification sheet

Motor	3 hp
Cutter head	Shear tec
Fence tilt	90 to 40 degrees
Dust chute diameter	4 inches
Max cutting depth	1/64 inch
Volts	220V single phase
Weight net/gross	

Receiving your machine.

Note. It is probable that your machine will be delivered by a third party. Before you unpack your new machine, you will need to first inspect the packing, invoice, and shipping documents, supplied by the driver.

Insure that there is no visible damage to the packing, or the machine. You need to do this prior to the driver leaving. All damage must be noted on the delivery documents and signed by you, and the delivery driver. You must then contact the seller, [Laguna Tools] within 24 hours.

Introduction to jointer.

The jointer is designed to give you years of safe service. Read this owner's manual in its entirety before assembly or use.

The jointer is generally defined as a machine that cuts planks of wood flat, and smooth. The machine achieves this by the plank being pushed along a flat table, and passing the plank over a revolving cutter head.

There are many types of cutter head, and this machine uses an inserted cutter type. The insert cutters main advantage is to reduce tear out of the grain, but the finish is not as smooth as the parallel blade system. It is well within the capabilities of a belt sander to give a professional finish to the jointed plank.

The parallel blade system, gives a finish without the lines that the insert cutter system gives, but, is susceptible to tear out, especially on planks with knots. On balance, it is better to use a machine with the insert cutters than the parallel blades, as it greatly reduces the risks of having to scrap valuable wood, or spending excessive time sanding tear out marks.

Additional instructions for the use of the jointer.

Like all machines, there is danger associated with the machine. Injury is frequently caused by lack of knowledge or familiarity. Use this machine with respect. If normal safety precautions are overlooked or ignored, serious personal injury may occur.

1. Kickback.

"Kickback" is when the work piece is thrown off the jointer table by the cutter head. Always use push blocks and safety glasses to reduce the likelihood of injury from "kickback.". The "kickback zone" is the path directly through the end of the in feed table. Never stand or allow others to stand in this area during operation. If kick back occurs, severer injury may occur.

2. Cutter head alignment.

To reduce the possibility of kickback, keep the top edge of the out feed table aligned with the cutter head insert at top dead centre (TDC).

3. Push blocks.

The cutter heads are extremely dangerous and you must never pass your hands over the cutter head. Always use push blocks whenever surface planing.

4. Supporting the work.

Only make cuts if the work piece is stable and never attempt to cut unstable planks, or injury may occur.

6. Cutting depth.

Never exceed the maximum cutting depth as stated in the specification for your machine. It is far better to take several small cuts rather than large cuts.

7. Direction of cut

Jointing against the grain or jointing end grain is dangerous and could produce chatter or excessive chip out. Always joint with the grain.

8. Guards.

Guards are designed to reduce the risk of injury. Always use the guards. If it is imperative to use the machine without the guards, [Rabbeting] always replace the guards.

9. Cutting direction.

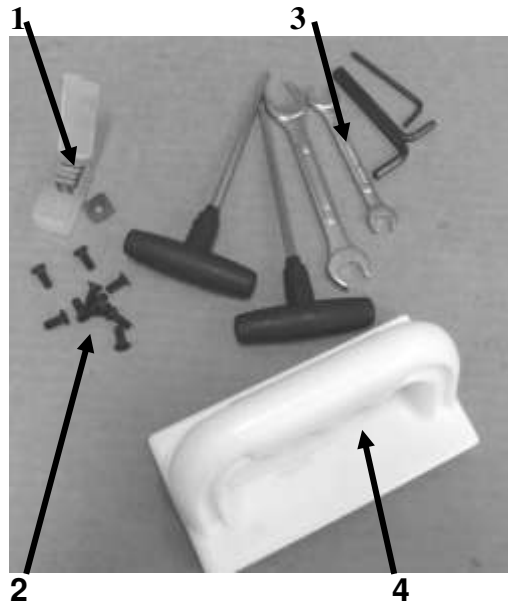
Only cut from the in feed table to the out feed table, and always complete the cut. Do not stop the wood progress until the job has cleared the cutter head completely. Only cut with the grain or at a slight angle to the grain.

10. Stock.

Your safety will be greatly enhanced if you only use good lumber. Only work with lumber after you have inspected it completely. Staples, Nails Loose knots and any other metal in the plank will damage your cutter head and could case injury and or fire. If you have any question about a piece of lumber, do not use it.

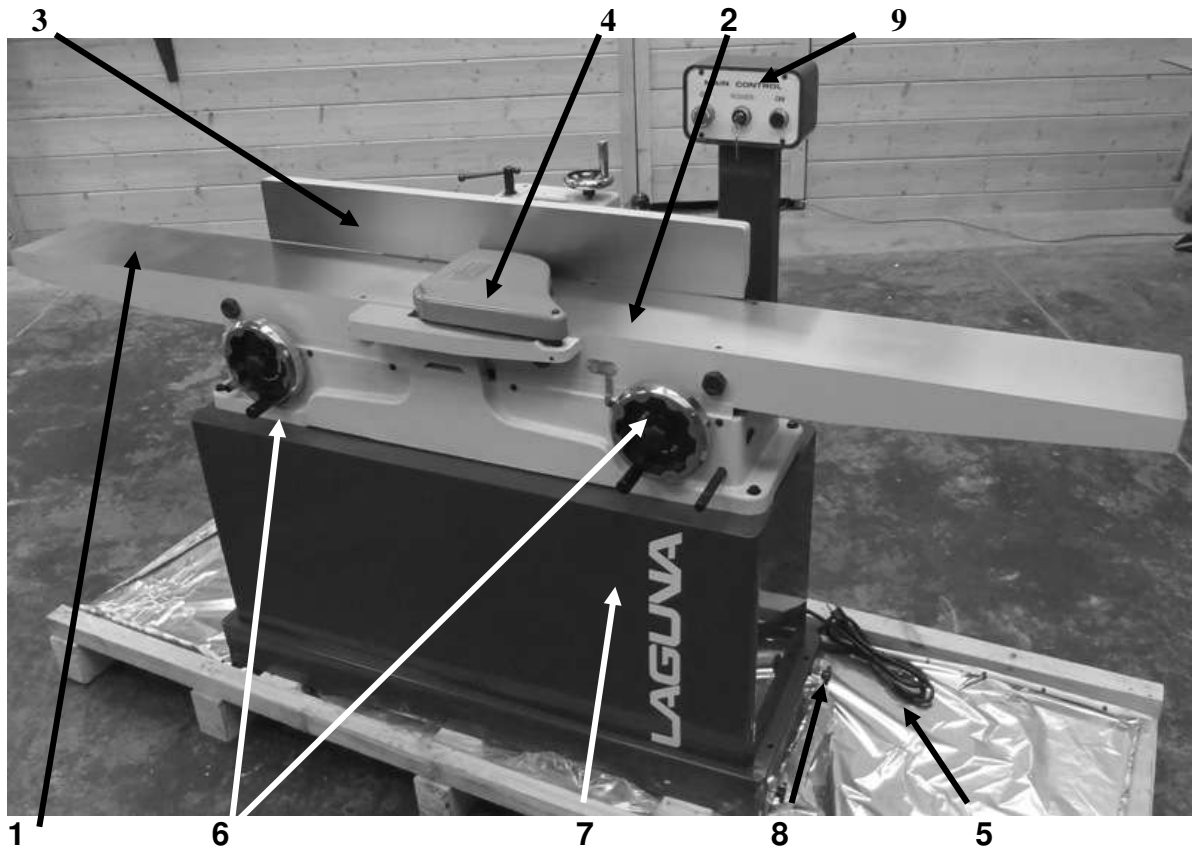
What you will receive with the jointer.

- 1. Spare cutter teeth.
- 2. Spare cutter screws.
- 3. Tools.
- 4. Push block.



Parts of the jointer.

The jointer doe's not have many parts. The major parts are discussed in this manual. If you are not familiar with the jointer, take the time to read this section and become familiar with the machine.



1. Out feed Table.
2. In feed Table.
3. Fence.
4. Cutter head Guard.
5. Electrical cable.
6. Table height adjusting handles.
7. Body.
8. Mobility kit.
9. Start and stop switches.

Out feed Table.

The function of the out feed table is to support the job once it has been machined by the cutter head. The out feed table must be adjusted level with the cutter head teeth at top dead centre [TDC].

In feed Table.

The in feed table is adjusted to suit the depth of cut that is required.

Note. Never exceed the maximum depth of cut specified for your machine. It is far safer to take many small cuts rather than one large cut.

Fence.

The fence is used to keep the job square to the cutter head and is also used to produce angle cuts on the edges of panels. The fence can be adjusted from 90 to 45 degrees.

Cutter head Guard.

The guard is there to protect you. Always adjust the guard to expose only the minimum amount of cutter to suit the job width.

Electrical cable.

Note. The machine may not be supplied with a plug as the plug type will depend on your electrical supply.

Table height adjusting handles.

The hand wheels adjust the tables to the required height.

Body.

The body of the machine supports the table etc. It is manufactured from heavy gauge steel and provides a heavy base that is designed for rigidity.

Mobility kit.

The mobility kit allows the machine to be moved to various locations within your work area.

Start & stop switches.

The switches are used to start and stop the machine.

Serial and data plate.

This plate is mounted on the back of the machine.

Where to locate your Machine.

Before you unpack your machine, select the area where you will use your machine. There are no hard and fast rules for its location, but, below are a few guidelines.

1. There should be an area around the machine suitable for the length of wood that you will be machining.
2. Adequate lighting. The better the lighting, the more accurate and safely you will be able to work
3. Solid floor. You should select a solid flat floor, preferably concrete or something similar.
4. Close to power source and dust collection.

Unpacking your machine.

To unpack your machine, you will need tin snips, knife and a wrench.

1. Using the tin snips, cut the banding that is securing the machine to the Pallet [if fitted].

WARNING: EXTREME CAUTION MUST BE USED BECAUSE THE BANDING WILL SPRING AND COULD CAUSE INJURY.

2. Remove the box from the Jointer. The parts will be packed at the side of the plainer.

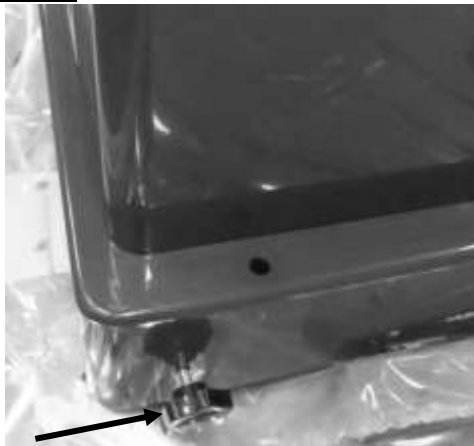
Note. The machine is heavy, and if you have any doubt about the described procedure, seek professional assistance. Do not attempt any procedure that you feel is unsafe or that you do not have the physical capability of achieving.

Note. To remove the plainer from the box you will need 2 or more people.

3. Slide the plainer so that it overhangs the pallet. Tip the plainer so that it touches the floor. Slide the pallet from under the jointer, and lower the jointer to the floor.

Assembly & set up.

Mobility kit.



Mobility clamp screw



Mobility wheel

The mobility wheels come pre-fitted to the base of the machine.

The wheels are locked by tightening the clamp screws on the outside of the body.

Fitting the on / off switch.

Fit the on / off assembly to the side of the body as shown.



On / off switch housing

The jointer is now fully assembled but before the machine is connected to the electrical supply the following checks and adjustments must be carried out.

1. Move the jointer to the location that it will be used.
2. Check that the cutter head can rotate freely and that the teeth do not contact either the in or the out feed tables.
3. Check that the guard is covering the cutter head and that it is free to move and spring back once released.
4. Check that all tools have been removed from the machine.

Connecting the electrical supply.

Note. A qualified electrician must carry out the installation.

Ensure that the main supply corresponds with that of the machine [Single phase 220 V]. It is recommended that you use a 30-amp mains breaker.

If you need a longer cable than that supplied on the machine, you can connect a new cable into the internal power termination.

Note. The machine is not normally supplied with an electrical plug, as the type of plug will be dependent on the installation.



Electrical cable

Connecting the dust collection.

Connect a 4" flexible hose between the dust hose connector and your dust collector.

Once fitted pull on the hose to ensure that the connection is tight.

Note. You will need a dust collection system with a minimum of 1000 cubic feet per minute capacity. The stronger the dust collection the better, as the machine is capable of producing a lot of waste.



Dust hose connector

Running and adjusting the machine.

Cleaning the machine.

The machine is shipped with the non-painted surfaces protected from rust by a film of grease.

The grease must be removed with WD40 or similar, as it attracts saw dust and dirt. The surfaces should then be coated with a Teflon lubricant or similar. Teflon tends to dry and will not attract saw dust and dirt.

Test Run.

Now that the assembly is complete it is time to conduct a test run.

During the test run you will check the following points.

1. Motor starts and runs smoothly.
2. That the stop button, function correctly.

Before you run the machine check the following.

1. All the tools have been removed from the machine.
2. That the guard is in place.
3. You are wearing the appropriate safety equipment.

5. You have read and understood the instruction manual.

Note. If any of the below functions fail to operate correctly, the fault must be corrected prior to continuing to the next test. Any investigation to find or correct a fault must be conducted with the power disconnected.

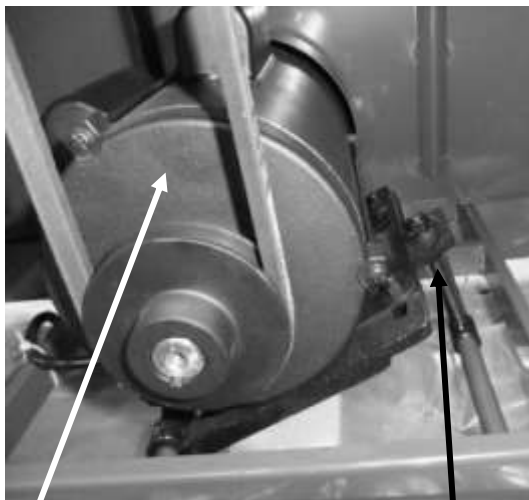
1. Turn the power on, with the key switch.
2. Start the machine by pressing the green start button. The machine should run smoothly with little or no vibration.
3. Press the red stop button. The machine should slow down and stop.

Note. The red stop button has to be re-set by twisting until it pops out. If the machine fails to start, check that the stop button is re-set in the out position.

Adjustments.

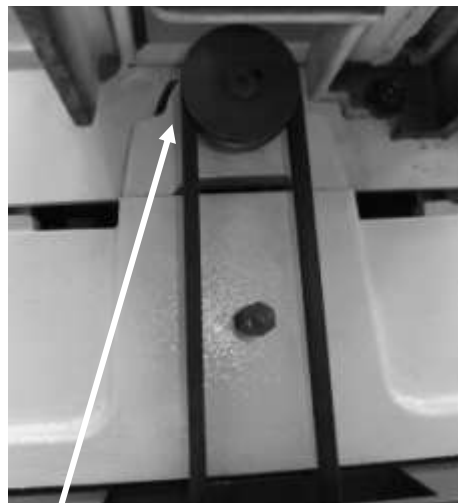
Note. The machine has had all its functions calibrated at the factory but due to shipping conditions some movement may have taken place. This is unavoidable and it is therefore recommended that the following checks are made prior to starting production. As the machine is used some functions may move and it is therefore good practice to know the process for adjusting the machine prior to production.

Adjusting the drive belt.

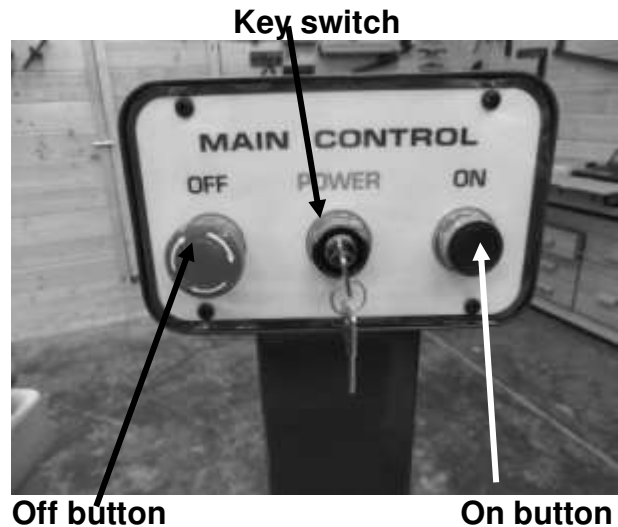


Motor

Adjuster



Cutter head pulley



Off button

On button

Adjust the belt so that there is approx 3/16 in deflection when pressed with moderate finger pressure.

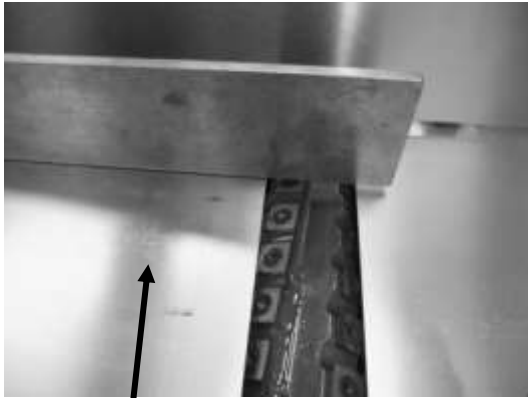
The drive belt should be checked after running the machine for approximately 10 hours. The belt beds into the pulleys, and will slacken off slightly. If is not adjusted, slippage may accrue and this will cause early belt failure. There should be a 3/16" deflection when the belt is pressed with moderate finger pressure.

Note. To access the motor and drive belt, remove the side and top panel.

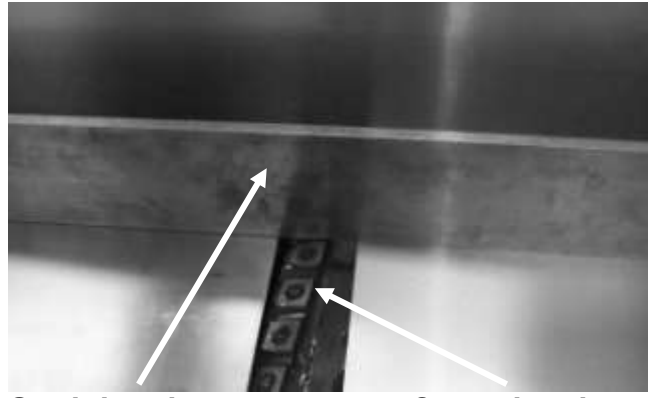
Note. Disconnect the power to the machine prior to conducting machine adjustments or repairs.

Setting the out feed table to the cutter head.

The out feed table must be level with the teeth of the cutter head when the teeth is at top dead centre [T.D.C.]



Out feed table



Straight edge

Cutter head

1. Rotate the cutter head so that the teeth are at the T.D.C. position.
2. Place a straight edge on the out feed table over the cutter head and check that the teeth just touch the straight edge.

Note. This has to be checked at both sides of the table.

Setting the in feed table.

1. Place a straight edge so that it is equal on both the in feed and out feed tables.
2. Bring the in feed table up so that the straight edge is even on both tables.
3. Check that the table is lined up with the scale at "0".

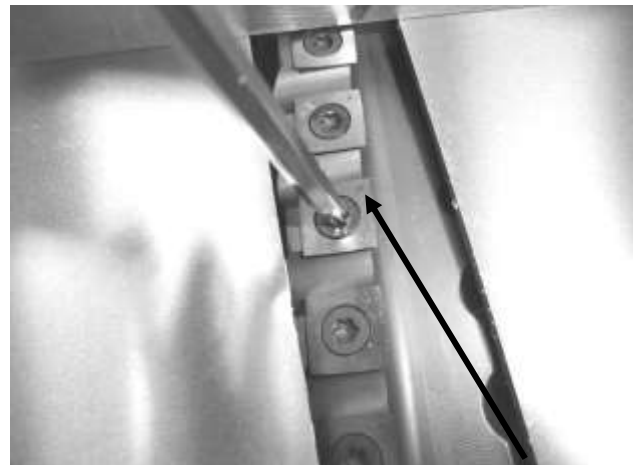


Scale

Fitting teeth to the Sher tec cutter head.

The carbide cutter head [Sher Tec] has multiple teeth which have 4 cutting edges. The teeth can be rotated as follows, when they are blunt or damaged.

Note. You will notice that each cutter tooth has a registration dot to enable you to ensure that the teeth are moved round in the same direction.



Registration dot

1. Loosen the tooth with the special allen key.
2. Lift the tooth and rotate to the new cutting face.

Note. Take special care to clean the tooth and its mating surface. Any dirt or sawdust that is trapped under the tooth will cause it to be at a different height to the other teeth, and degrade the surface finish when you start machining. This will result in you having to take all the teeth out and clean the teeth and the mating surfaces again. This is very frustrating and a waste of time. Take your time and ensure that you are very thorough with cleaning.

3. Lower the tooth into the cutter head and clamp with the allen key.

Note. Only move all the teeth to a new cutting edge. Do not move less than all the teeth.

Note. The carbide cutter head will have several advantages over the parallel blade type cutter head.

1. The teeth are carbide and will last longer than high speed steel parallel blades.

2. There is less chance of tare out.

The disadvantage is that they are initially more expensive and the surface finish is slightly wavy. This is caused because the teeth have a very slight radius. This waviness is easily removed by a light sanding.

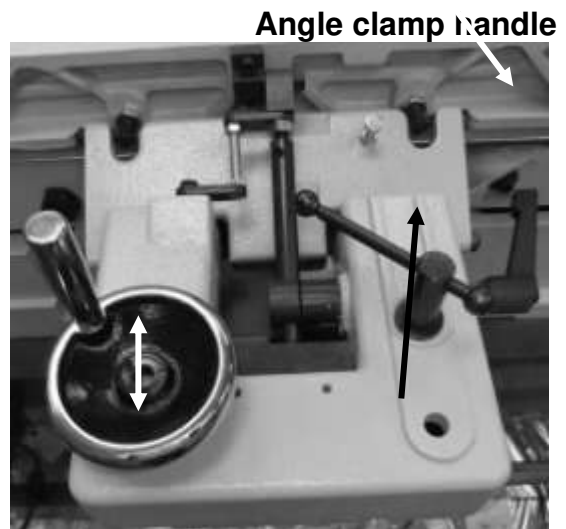
Adjusting the fence.

The fence has 2 adjustable stops. One for 45 degrees, and the other stop for the 90 degree position.

The fence is clamped in the angle position with the angle clamp handle. To adjust the fence, loosen the clamp handle, move to the required position, and re clamp.

The stops do not come pre set, and to set, follow the guide lines below.

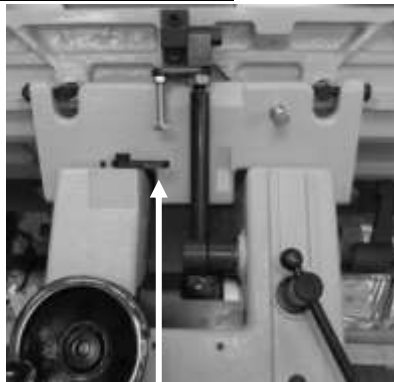
To move the fence across the jointer table, loosen the clamp handle, move the fence with the forward back handle to the required position, and re clamp.



Forward back handle

Clamp handle

Adjusting the 45 degree stop



90 degree stop



45 degree stop

1. Adjust the fence to 45 degrees using a set square, and lock in position.

2. Adjust the stop screw so that it touches the back of the fence, and lock in position with the lock nut.

3. Unlock the fence and move. Move the fence back to the 45 degree stop and lock in position. Check that the fence is at 45 degrees. If the fence is not at 45 degrees, readjust.

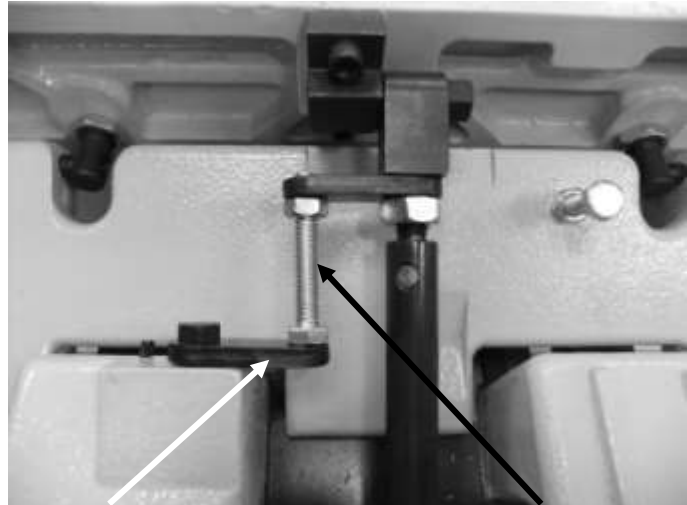
Adjusting the 90 degree stop

2. Move the flip stop to the position shown.

1. Adjust the fence to 90 degrees using a set square, and lock in position.

3. Adjust the stop screw so that it touches the flip stop, and lock in position with the lock nut.

4. Unlock the fence and move. Move the fence back to the 90 degree stop and lock in position. Check that the fence



Flip stop

Stop screw

is at 90 degrees. If the fence is not at 90 degrees, readjust.

Maintenance

As with any machine, to ensure optimal performance you must conduct regular maintenance.

Daily checks.

1. Clean the machine and lubricate unpainted surfaces with a Teflon lubricant.

Wipe off any excess and buff with a dry polishing cloth. This will reduce the likelihood of rust forming and reduce the friction on the tables as the wood is machined.

2. Check cutter teeth for chips and dullness.

3. Generally inspect the machine for damage and loose or worn parts.

Weekly checks.

1. Clean the cutter head.

2. Check cutter teeth for chips and dullness.

3. Generally inspect the machine for damage and loose or worn parts.

4. Check the dust extraction for blockages and any large bits that could cause blockages.

Monthly checks.

1. Check the motor drive belt for wear, splits and cuts.

2. Clean the motor compartment and the motor to ensure that the motor cooling fins work efficiently.

3. Generally inspect the machine for damage and loose or worn parts.

Note. It is recommended that you use a Teflon based lubricant.

Drive belt replacement.

Note. Disconnect the power to the machine.

1. Remove the side cover.

2. Loosen the motor adjuster.

3. Remove the drive belt.

4. Fit the new belt.

5. Re-tension the belt. There should be a 3/16" deflection when the belt is pressed with moderate finger pressure. Tighten the motor clamping bolts.

6. The drive belt should be checked after running the machine for approximately 10 hours. The belt bed into the pulleys, and will slacken off slightly. If it is not adjusted slippage may accrue and this will cause early belt failure. There should be a 3/16" deflection when the belt is pressed with moderate finger pressure.

7. Refit the side cover before running the machine.

Lubricating the machine.

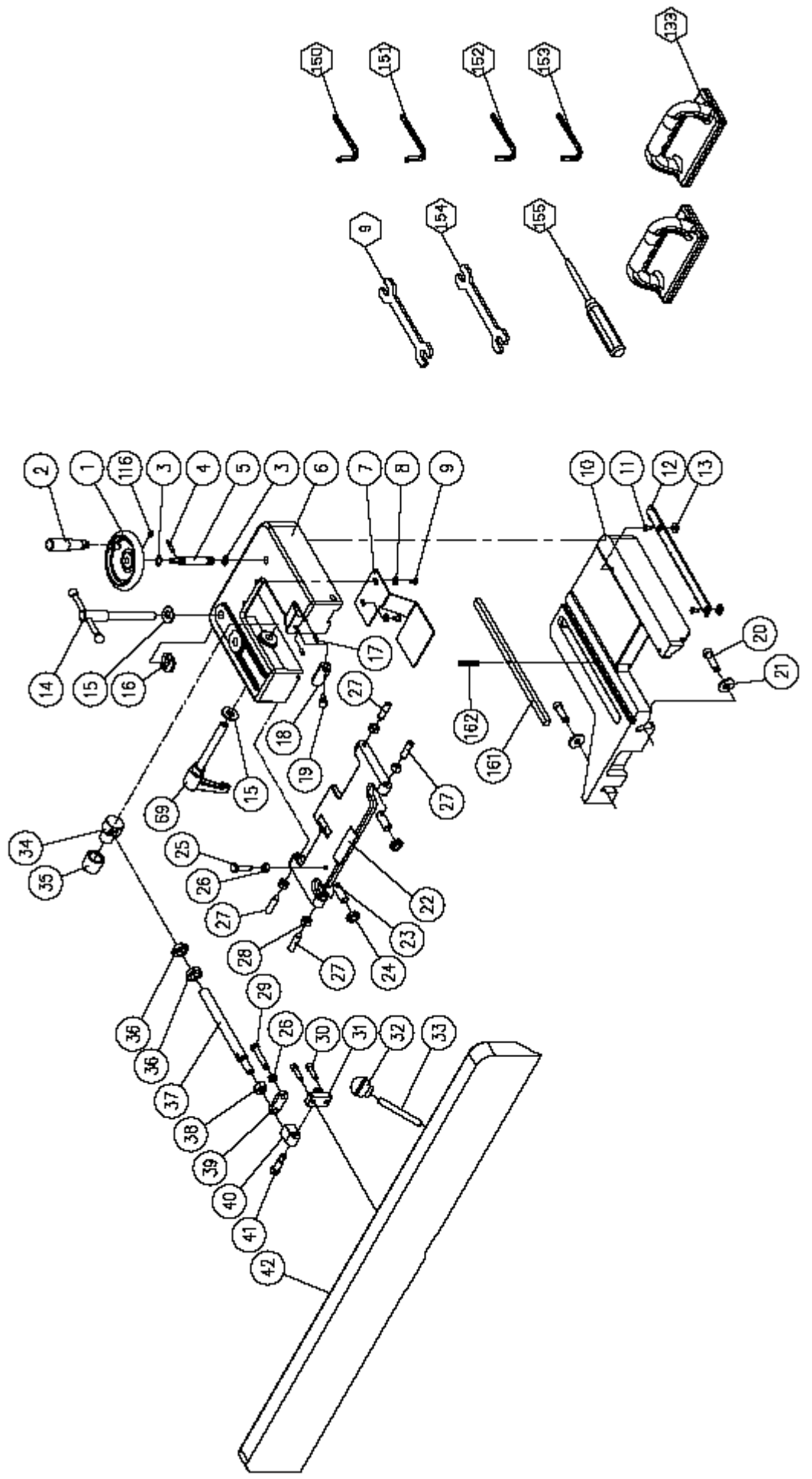
Note. All the bearings are sealed for life and do not require lubrication. If a bearing is noisy, do not try to re lubricate but replace it.

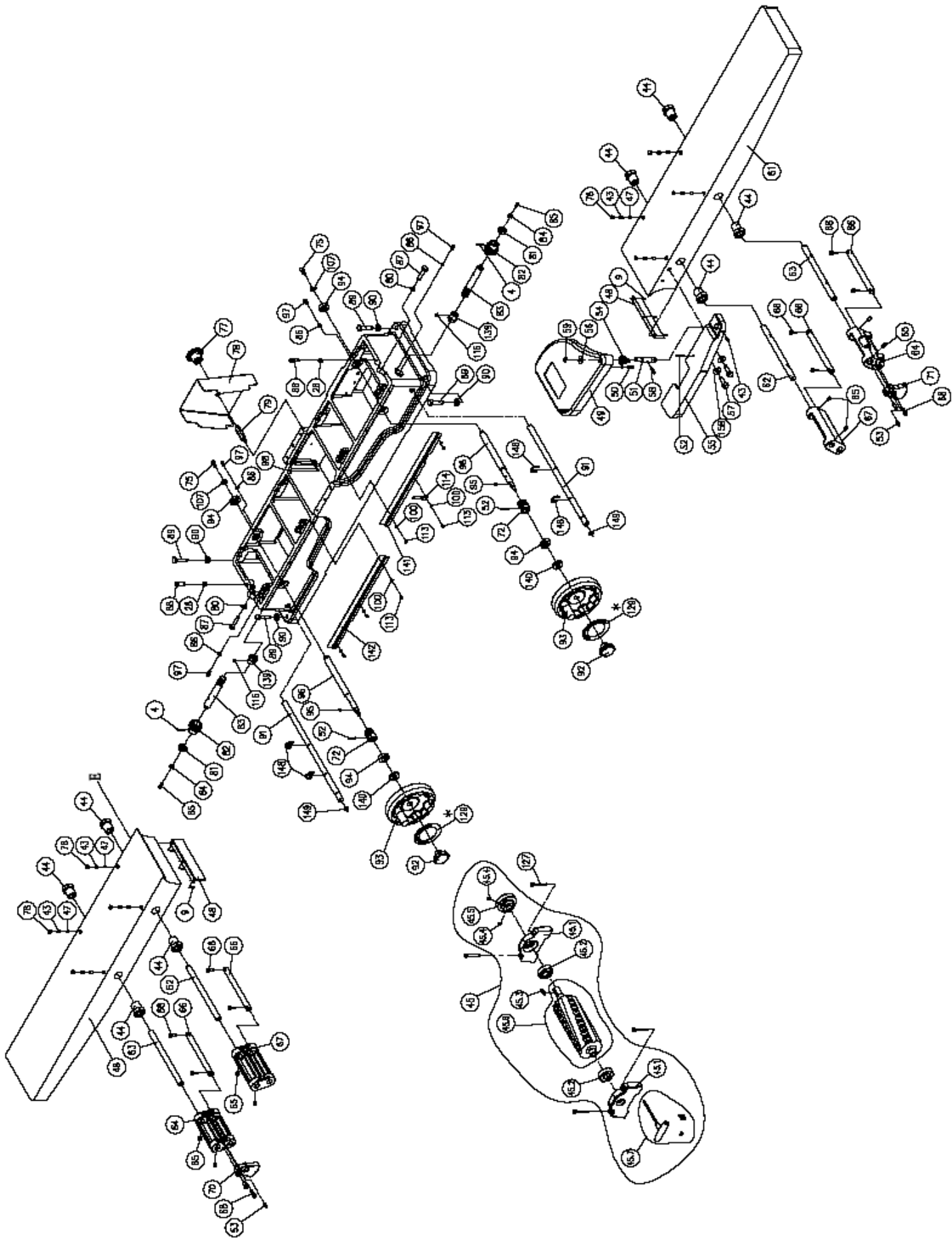
Note. It is recommended that you use a Teflon based lubricant as it tends to dry and therefore will attract less saw dust and dirt.

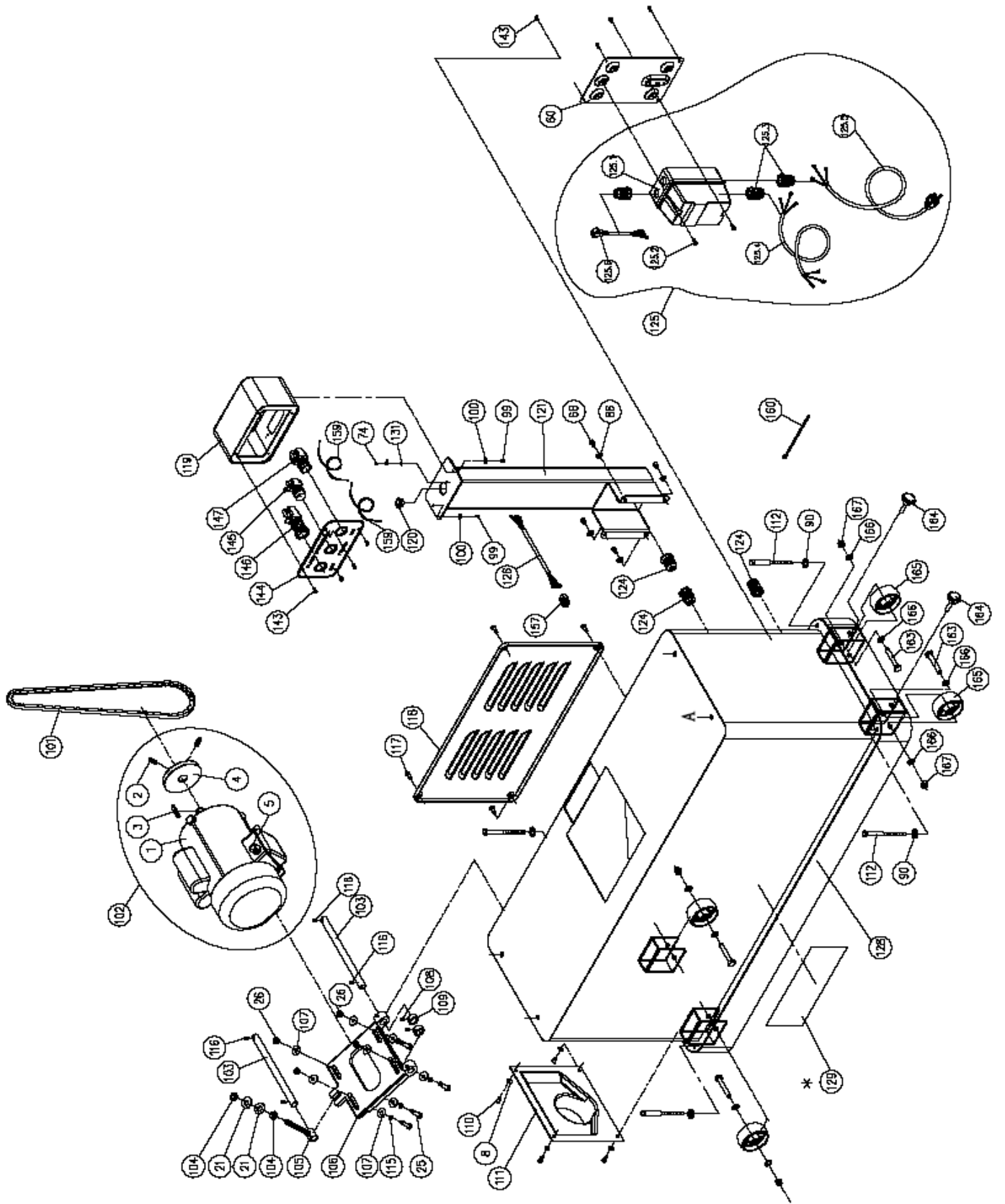
Troubleshooting and fault finding.

Problem	Cause	Corrective action
Motor will not start or fuses or circuit breakers blow.	1. Short circuit	2. Repair or replace short circuit item.
	2. Start capacitor faulty.	3. Fit new capacitor.
	3. Motor thermal protection circuit breaker faulty, or motor is at fault.	4. Replace thermal protection circuit breaker in motor or replace motor.
	4. Open circuit in motor or loose connections.	5. Replace or repair motor or loose connection
Fuses or circuit breakers blow.	1. Motor drawing excessive current	1. Repair or replace motor.
	2. Cutter head or motor jammed	2. Remove jam.
	3. Short circuit	3. Repair or replace short circuit item.
Motor will not develop full power or motor speed slows with load, overheats, or stalls.	1. Motor run capacitor at fault.	1. Replace the capacitor.
	2. Machine overloaded.	2. Take smaller cuts.
	3. Motor overheating.	3. Clean motor taking, care to make sure that all the cooling fins are clean.
	6. Short circuit in motor or loose connections.	6. Repair or replace motor / loose connections.
Cutter head slows or belt squeals when cutting,	1. V-belt loose.	1. Tighten V-belt
	2. V-belt worn out.	2. Replace V-belt
Loud noise coming from machine.	1. Drive belt are damaged.	2. Replace drive belt
Tables are hard to adjust.	1. Table spindles are tight.	1. Clean and lubricate spindles.
Excessive snipe. (gouge in the end of the board that is uneven with the rest of the cut).	1. Out feed table is too low.	1. Re set out feed table with cutter head.
	2. Operator pushing down on trailing end of job.	2. Eliminate downward pressure on trailing end of job.
	3. Job is not supported as it leaves the out feed table.	3. Support the job as it leaves the out feed table.
Job stops or slows in	1. Taking too deep cut.	1. Take a smaller cuts.

during cut.		
	2. Pitch or build up on tables.	2. Clean the tables and cutter head components
Chipping or marks (consistent pattern).	1. Knots or conflicting grain direction in wood.	1. Inspect job for knots and grain direction; only use good material.
	2. Nicked, chipped or dull carbide tooth.	2. Replace/rotate affected tooth.
	3. Taking too deep cut.	3. Take smaller cuts. Take small cuts on hard woods.
Furry finish on the grain.	1. Wood has high moisture content or surface wetness.	1. Check moisture content and allow to dry.
	2. Blunt teeth.	2. Rotate the teeth.
Lines or ridges that run along the board	1. Nicked or chipped teeth.	1. Replace or rotate teeth.
Chatter marks across the face of the board. Uneven blade or teeth marks, wavy or surface.	1. Teeth not at even heights.	1. Clean interface between teeth and cutter head.
	2. Teeth not installed evenly.	2. Check that there is no dirt etc under the teeth and that they are evenly tight.
	3. Worn cutter head bearings.	3. Replace cutter head bearings.
Shiny finish.	1. Teeth are blunt.	1. Rotate/replace teeth.
	2. Too fine a cut.	2. Increase the depth of cut.
Chip Marks Random pattern.	1. Chips not removed from cutter head.	1. Use a dust collection system. Or a stronger dust collection system
Board edge is concave or convex after jointing.	1. Job not held with even pressure on in feed and out feed table during cut.	1. Hold job with even pressure as it moves over the cutter head.
	2. Job started too uneven.	2. Take small cuts to remove the extreme high spots before doing a full pass.
	3. Board has excessive bow or twist along its length.	3. Surface plane one face so there is a good surface to position against the fence.
	4. Insufficient number of passes.	4. It may take 3 to 5 passes to achieve a Good edge, depending on starting condition of board and depth of cut.







PARTS LIST FOR MJOIN8012-0130

Key	Part No.	Descriptions	Q'ty	
1	230037-901	BOLT	1	
2	006001-091	FLAT WASHER	13*28*3.0t	1
3	130019-903	PLATE STOP		1
4	050108-000	CLAMP		1
5	250372-615	KNOB FENCE TILT		2
6	360074-901	CRANK		1
7	360078-000	PIN		1
8	003103-104	CAP SCREW	1/4"-20NC*1-1/4"	2
9	009004-200	HEX. NUT	1/4"-20NC	2
10	290007-901	BOLT SHOULDER 10*6		1
11	009010-200	HEX. NUT	1/2"-20NF	2
12	050091-000	FENCE		1
13	360676-901	STUD PIVOT		2
14	009005-200	HEX. NUT	5/16"-18NC	5
15	000003-201	HEX. SCREW	5/16"-18NC*1-1/4"	1
16	003602-101	FLAT HD SOC. SCREW	5/16"-18NC*1-1/2"	1
17	172285-905	FLAT WASHER	13*35*5.0t	1
18	050094-000	SHAFT LOCK		1
19	130018-903	SQUARE NUT		1
20	130008-903	NUT HANDLE		1
21	050092-000	TILT PLATE		1
22	230015-901	STUD PIVOT		4
23	360038-901	HANDLE SHAFT		2
24	009022-100	HEX. NUT	3/8"-16NC	4
26	009104-200	HEX. NUT	1/2"-12NC	1
27	360075-901	BOLT		1
28	003103-102	CAP SCREW	1/4"-20NC*1/2"	1
29	380135-901	BOLT		2
30	050098-000	CLAMP		1
31	006001-073	FLAT WASHER	10.2*25*4.0t	6
32	011002-104	SPRING PIN	4*14	1
33	380082-902	KEY		1

34	003105-103	CAP SCREW	3/8"-16NC*1-1/2"	2
35	050095-901	BEARING HOUSING		2
Key	Part No.	Descriptions		Q'ty
36	030208-000	BALL BEARING	6204-2NSE	2
37	012003-008	KEY	5*5*22	1
38	003202-101	SET SCREW	5/16"-18NC*3/8"	3
39	050096-901	PULLEY		1
40	922842-000	SHEARTEC 2 CUTTERHEAD ASSEMBLY		1
40.1	922843-000	SHEARTEC 2 CUTTERHEAD		1
40.2	038201-702	TORX SCREW	#10-32UNF*12.5	10
	040703-000	TORX WRENCH	T-25	2
	210114-000	KNIFE	15*15*2.5t	5
41	360076-901	STUD PIVOT		2
42	009007-200	HEX. NUT	3/8"-24UNF	2
43	173004-000	BELT GUARD		1
44	230118-000	T-NUT		1
45	051125-000	RIBBET	CSA/UL	1
46	380147-901	STUD PIVOT		1
47	017002-000	BALL	ø6	2
49	090020-000	CUTTERHEAD GUARD		1
50	010002-000	RETAINING RING	STW-11	1
51	011004-104	SPRING PIN	6*36	1
52	280013-901	SPRING		1
53	360077-901	BLADE GUARD SHAFT		1
54	011003-106	SPRING PIN	5*28	2
55	922848-000	TABLE ASS'Y		1
.1	003105-102	CAP SCREW	3/8"-16NC*1-1/4"	4
.2	003106-102	CAP SCREW	1/2"-12NC*1-3/4"	4
.3	003201-102	SET SCREW	1/4"-20NC*3/8"	4
.4	006306-100	LOCK WASHER	9.8*17.8	4
.5	006309-100	LOCK WASHER	13*22.7	4
.6	012003-008	KEY	5*5*22	2
.7	009005-200	HEX. NUT	5/16"-18NC	8
.8	051119-000	BASE		1

.9	051124-000	TABLE INFEED		1
.10	050391-000	TABLE OUTFEED		1
.11	050104-000	CLAMP		2
.12	050105-000	CLAMP		2
.13	360080-000	SCREW ELEVATION		2
Key	Part No.	Descriptions		Qty
.14	380025-901	#N/A		2
.15	380150-000	GIB		2
.16	230039-901	SET SCREW		8
.17	003104-101	CAP SCREW	5/16"-18NC*1/2"L	2
.18	006001-041	FLAT WASHER	8.2*22*3.0t	2
56	920553-000	HANDWHEEL		2
57	006002-056	FLAT WASHER	8.5*23*2.0t	6
58	003304-201	PAN HD SCREW	5/16"-18NC*1/2"	2
60	230010-000	STUD PIVOT		1
61	002301-201	RIVET	2*5	2
62	003003-203	HEX. SCREW	5/16"-18NC*3/4"	4
63	922846-000	STAND ASS'Y		1
.1	006001-091	FLAT WASHER	13*28*3.0t	4
.2	003007-201	HEX. SCREW	1/2"-12NC*1"	4
.3	172985-000	STAND		1
.4	170125-000	MOTOR BRACKET		1
.5	922858-000	COVER		1
64	003105-102	CAP SCREW	3/8"-16NC*1-1/4"	2
65	110005-000	DOOR LATCH		1
66	009006-200	HEX. NUT	3/8"-16NC	1
67	006002-061	FLAT WASHER	8.8*15.5*1.6t	4
68	002301-201	RIVET	2*5	1
69	571984-000	POINTER		1
70	006307-100	LOCK WASHER	10.2*18.5	3
71	360026-901	STUD PIVOT		3
72	014008-000	V-BELT	M52	2
73	900056-000	MOTOR	2HP*1PH	1
.1	012202-002	KEY	5*5*30	1
.2	601015-000	MOTOR	2HP.1PH	1

.3	050099-901	MOTOR PULLEY		1
.4	003203-101	SET SCREW	3/8"-16NC*3/8"	2
74	937572-000	MAGNETIC SWITCH ASSY	2HP*1PH	1
.1	821007-028	MAGNETIC SWITCH	2HP*1PH	1
.2	021369-000	STRAIN RELIEF	PGA13.5-11B	2
.3	453012-007	POWER CORD	SJT 14AWG*3C*3200mm	1
.4	473003-010	MOTOR CORD	SJT14AWG*3C*1450mm	1
Key	Part No.	Descriptions		Q'ty
75	000303-103	PAN HD SCREW	M5*0.8P*10	2
77	003103-102	CAP SCREW	1/4"-20NC*1/2"	4
78	006304-100	LOCK WASHER	6.5*12.8	4
76	021316-000	STRAIN RELIEF	MG16A-10B-ST	1
79	922845-000	SWITCH BRACE		1
85	040005-000	HEX. WRENCH	5mm	1
86	040201-000	OPEN WRENCH	8*10	1
87	040204-000	OPEN WRENCH	12*14	1
89	250052-615	DUST CHUTE		1
91	003301-201	PAN HD SCREW	1/4"-20NC*1/2"	4
92	006002-032	FLAT WASHER	6.6*13*1.0t	4
92	006002-032	FLAT WASHER	6.6*13*1.0t	2
110	172356-902	COVER		2
111	051127-901	BLOCK ASM DEPTH	0-1/2"	1
112	003104-103	CAP SCREW	5/16"-18NC*3/4"	3
113	360082-901	SHAFT		1
114	280015-901	SPRING		1
115	380086-901	HOUSING PLUNGER		1
116	230156-615	KNOB PLUNGER	22*1/4"-20NC	1
117	009102-200	HEX. NUT	3/8"-16NC(14.2B*11.5H)	4
118	004001-101	LOCK KONB	5/16"-18NC*3/4"	2
119	250400-000	WHEEL		4
120	003005-206	HEX. SCREW	3/8"-16NC*2-1/2"	4
121	003302-202	PAN HD SCREW	1/8"-40NC*3/8"	2
122	006002-001	FLAT WASHER	4.3*10*1.0t	2
123	170127-901	PLATE		1
124	003403-102	PAN HEAD SCREW	1/4"-20NC*1/2"	2

125	003105-101	CAP SCREW	3/8"-16NC*3/4"	2
126	006306-100	LOCK WASHER	9.8*17.8	2
127	000002-104	HEX. SCREW	M6*1.0P*20	2
128	008005-100	HEX. NUT	M6*1.0P(10B*5H)	2

LAGUNA

2072 Alton Parkway. Irvine, CA 92606
Ph: 800.234.1976 | www.lagunatools.com

Laguna Tools is not responsible for errors or omissions.
Specifications subject to change. Machines may be shown with optional accessories.

© 2018, Laguna Tools, Inc. LAGUNA® and the LAGUNA Logo® are the
registered trademarks of Laguna Tools, Inc. All rights reserved.