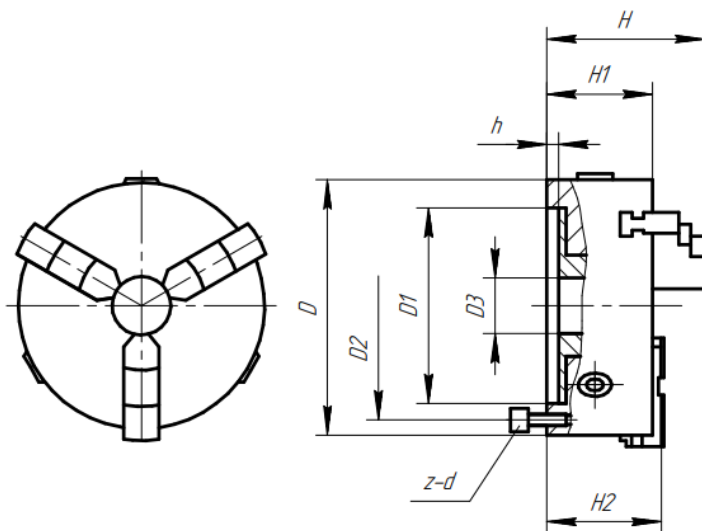


Патрон токарный 3х-кулачковый

Серия DK11

Технические характеристики



| Модель | D | D1 | D2 | D3 | H | H1 | H2 | h | z-d |
|-----------|-----|-----|-----|-----|-------|----|------|---|-------|
| DK11 80 | 80 | 56 | 67 | 16 | 66 | 50 | - | 3 | 3-M6 |
| DK11 100 | 100 | 70 | 83 | 22 | 74.5 | 55 | - | 3 | 3-M8 |
| DK11 125 | 125 | 95 | 108 | 30 | 84 | 58 | - | 4 | 3-M8 |
| DK11 160 | 160 | 125 | 140 | 45 | 95 | 65 | - | 4 | 6-M10 |
| DK11 160A | 160 | 125 | 140 | 45 | 109 | 65 | 71 | 4 | 6-M10 |
| DK11 200 | 200 | 160 | 176 | 65 | 109 | 75 | - | 4 | 6-M10 |
| DK11 200A | 200 | 160 | 176 | 65 | 122 | 75 | 80 | 4 | 6-M10 |
| DK11 250 | 250 | 200 | 224 | 80 | 120 | 80 | - | 5 | 6-M12 |
| DK11 250A | 250 | 200 | 224 | 80 | 134.5 | 80 | 86 | 5 | 6-M12 |
| DK11 315 | 315 | 260 | 286 | 104 | 131.5 | 90 | - | 5 | 6-M16 |
| DK11 315A | 315 | 260 | 286 | 104 | 148.5 | 90 | 96.5 | 5 | 6-M16 |

| | | | | | | | | | |
|------------|------|-----|-----|-----|-------|-----|-------|---|-------|
| DK11 400 | 400 | 330 | 362 | 136 | 157.5 | 100 | - | 5 | 6-M16 |
| DK11 400A | 400 | 330 | 362 | 136 | 167 | 100 | 108,5 | 5 | 6-M16 |
| DK11 500A | 500 | 420 | 458 | 200 | 203 | 115 | 123 | 6 | 6-M16 |
| DK11 630A | 630 | 545 | 586 | 260 | 218 | 130 | 138 | 7 | 6-M16 |
| DK11 800A | 800 | 710 | 760 | 385 | 249 | 148 | 158 | 8 | 6-M20 |
| DK11 1000A | 1000 | 910 | 950 | 460 | 266 | 165 | 175 | 8 | 6-M24 |