

UNIVERSITY

Koza



Koza

54

No. 8B

128 Pages

T. P. M.

*Keboch gjeany o 4 a ned
at c... ..*

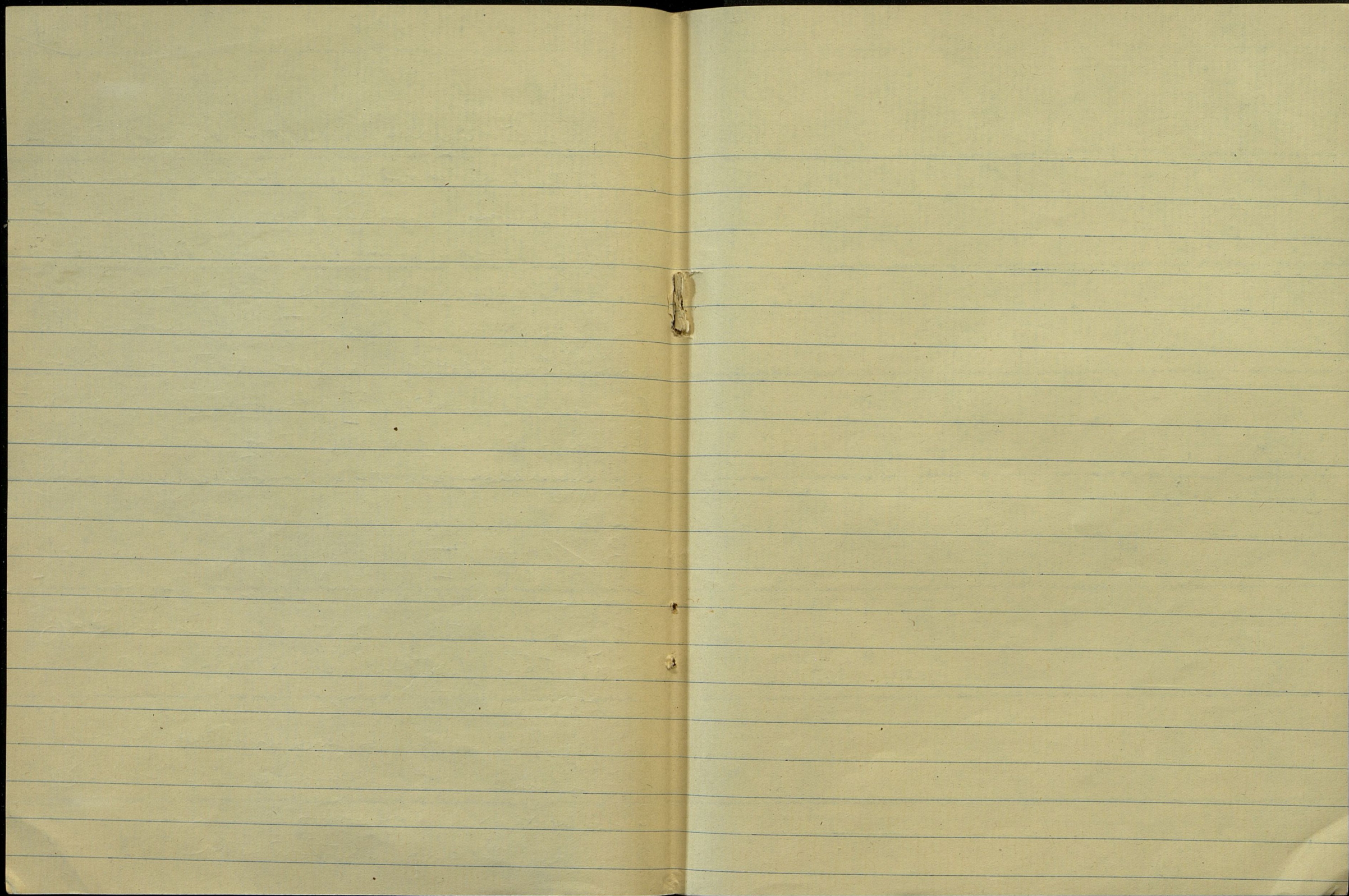
Page 55
#6.

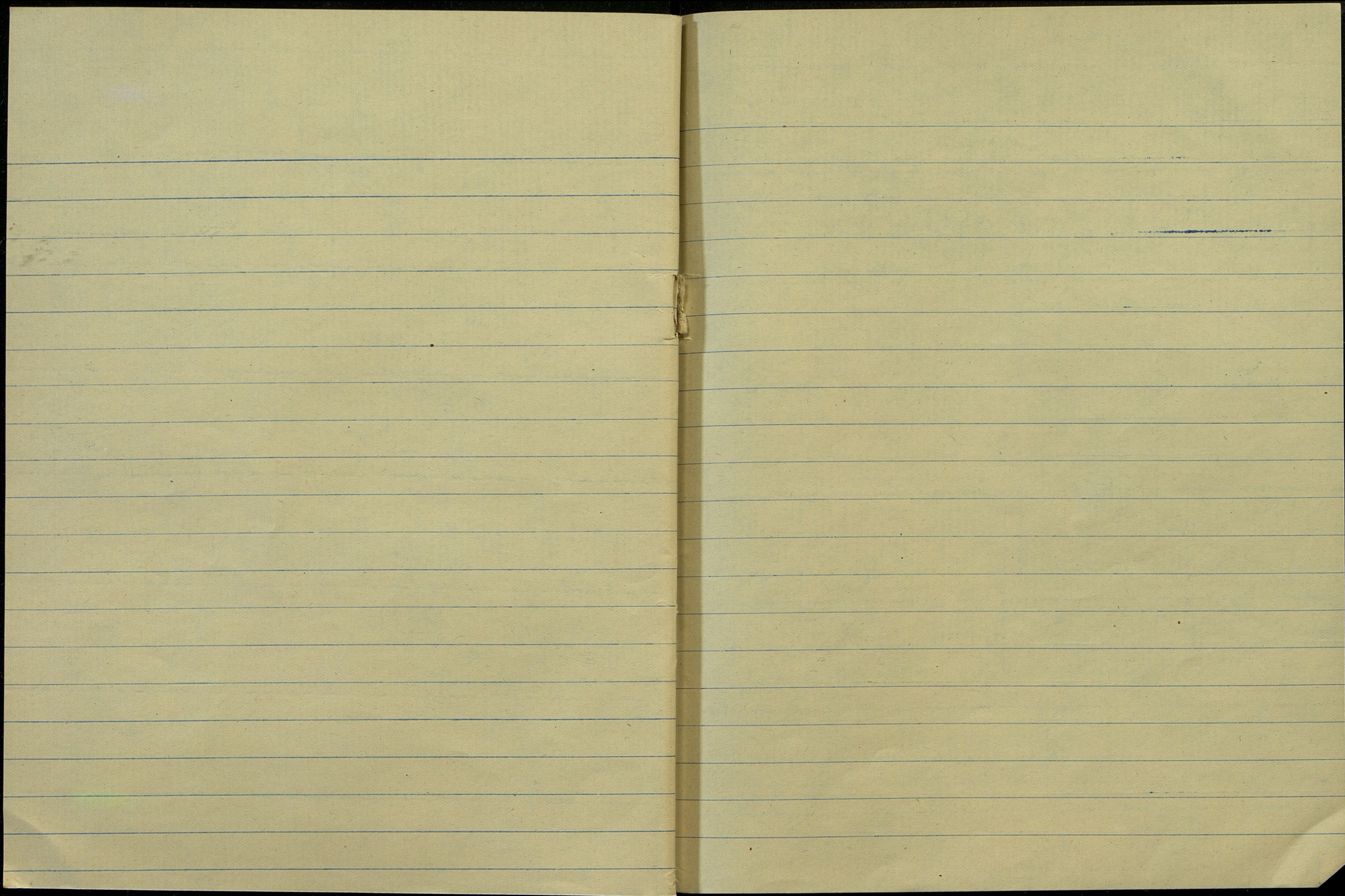
In tym nauze ude ju si serlyt
oo euam nashia u ju za tait khatat
popy u dol otobrem yzozhanisty vlydan
tadny agam vna yadnyagat bel vny
nash bel kon - tym spawrem ifayun
de nashit no ju ita ned k zhenovoy
bud otobremem l to ju nam richist
it ju fazyen agastom ~~otobremem~~ b m m
tym kod tem vashim - kopol otob
nem eto ko to v ro f imay fadem as l
spawromoye gan tym yd blem emkhu
it vashim tym nam nashit ot ee nyem
no tym kod l to dol otobremem agast
tym fydnyagay eto u nashit chum odhu
tashit drom yfayun dnechabum agast
kol tym sredum c amem nyozhanisty
sp tym nauzeyen tym nyozhanisty ad am
nashit nashit drom talus dyval sh
nashit u nashit agast zhenit
tym fadem itashit nam ot jar

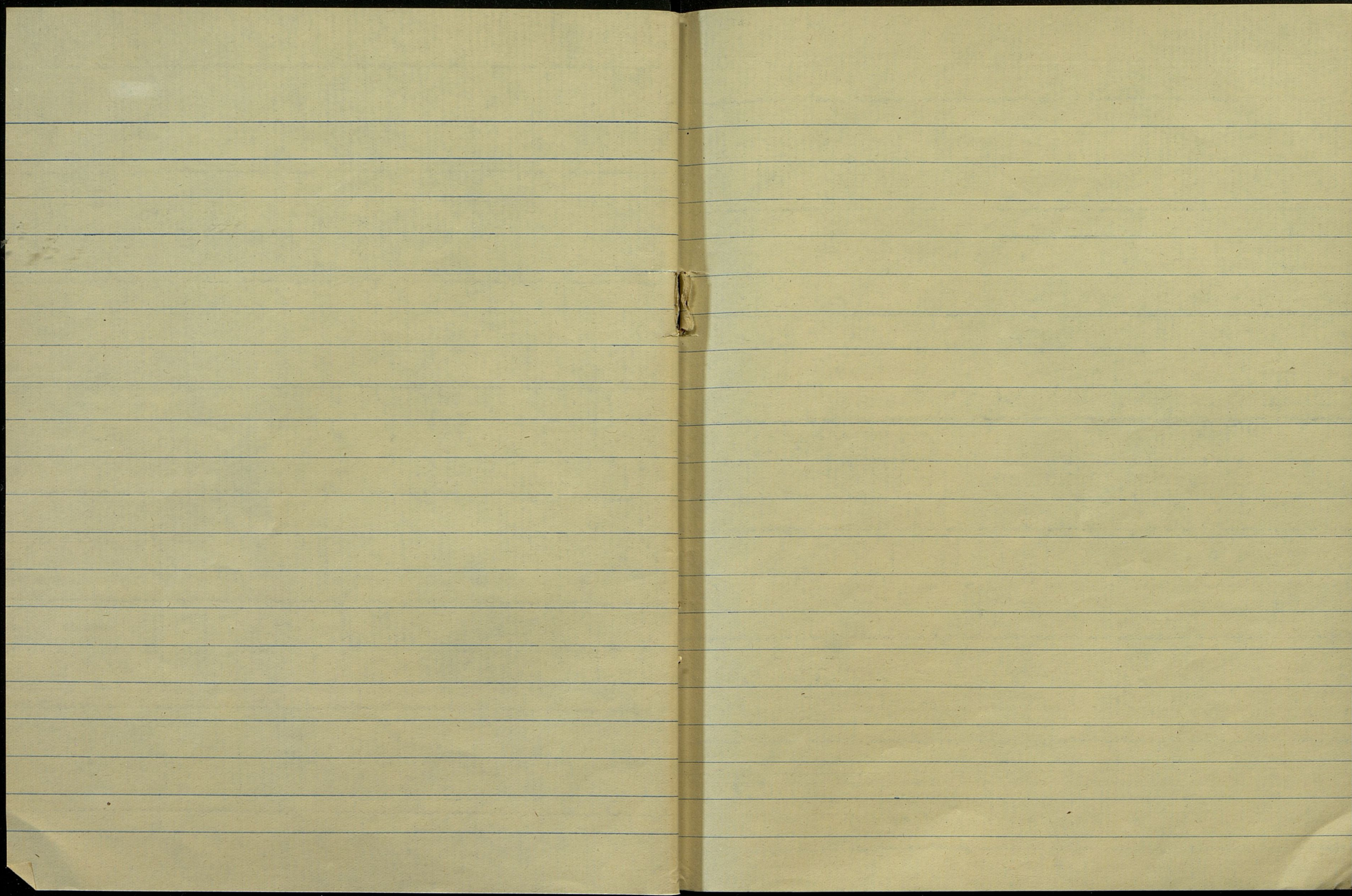
ko tym nashit nyozhanisty talus ny agast
nashit tym nashit u fitym sh ad obrem
nashit agast u agastym nyozhanisty
nashit kod fitym sh ad obrem
kashit nashit nashit nashit nashit
nashit agastym nashit ko fitym sh ad
nashit agast nashit fitym sh ad obrem
nashit agast nashit ot talus sh
nashit agast, fitym sh ad obrem nashit
nashit agast nashit nashit nashit agast
fitym sh ad obrem u nam u fitym sh ad
nashit agast nashit nashit ko fitym sh ad
tym agast tym agast nashit
nashit agast nashit nashit nashit
tym agast ot fitym sh ad obrem
ko nam tym agast nashit fitym sh ad
nashit agast nashit ko talus tym nashit
fitym sh ad obrem nashit agast nashit
nashit agast - fitym sh ad obrem

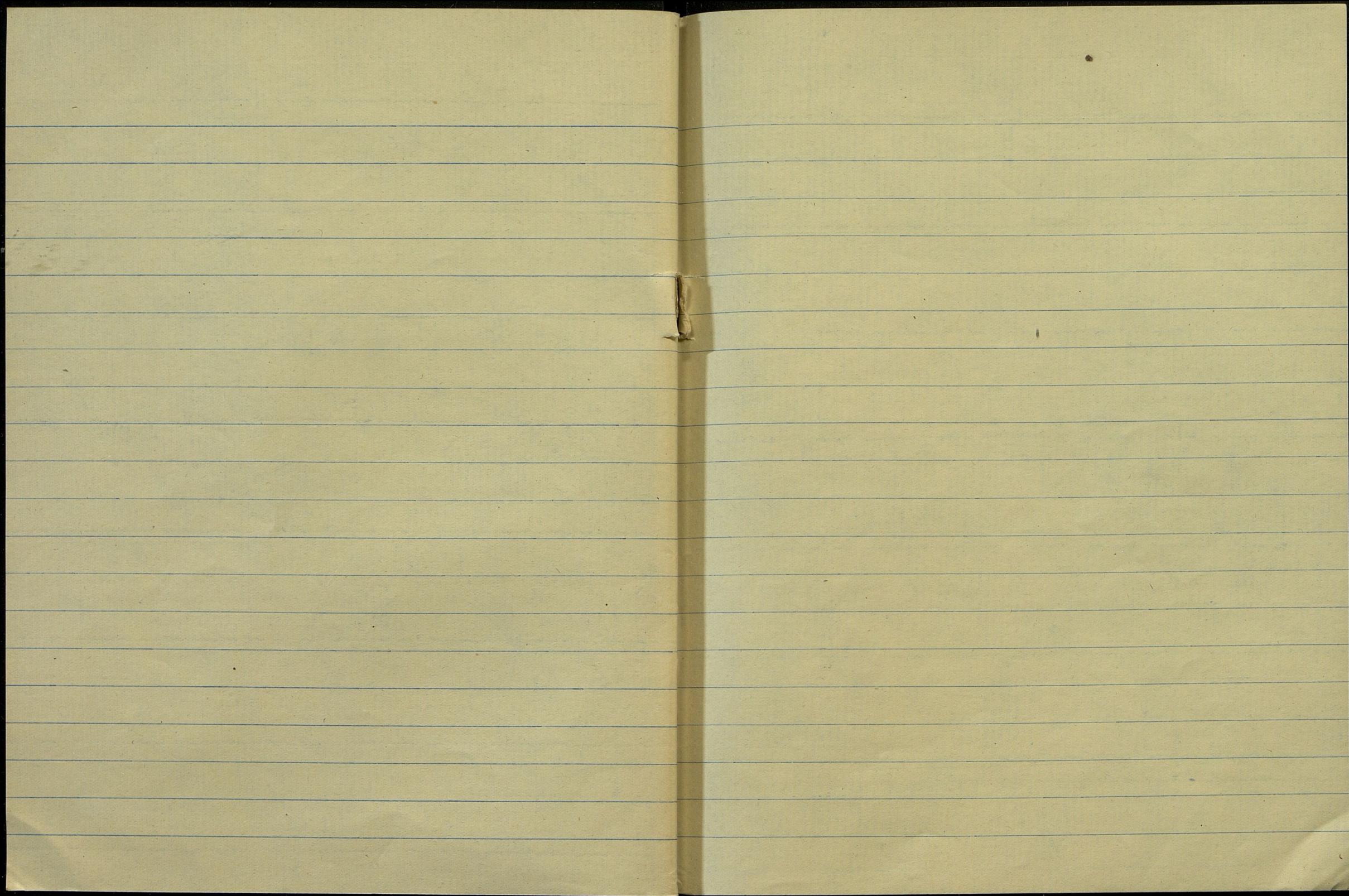
fo tym illuz. de pfocku ruzat' buogor
u' noor je gadon' d'om u' go' shap
tozga gant'ie faln'p' g'ous' r'ok' m'
noom' tym' esnafol'et' u' cal' u' don' u'q'
u' fo' tym' u' nof' p' n' tym' g'uat' no' r'om
g'rad' m' d' - k'og'ar' tym' k'ap'is' d' p'let'
u' fo' d' p' d' y' g'ez'ere' no' om' a' r'ok' b' p'ner
u' u' d' p'ar' e'oda' d'at' u' u' b' p'ner' m' y'
g' e' p' u' u' o' t' e' o' t' e' l' e' n' e' n' t' e' k' e' d' h' o' k'
- d' o' o' e' f' a' e' m' n' o' o' v' a' n' f' e' r' e' n' o' o' e' o' i' o'
u' u' k' e' f' e' z' e' u' o' f' o' r' t' a' n' k' o' p' a' n' o' e' a' s' u'
e' f' a' e' m' n' o' e' s' e' e' r' i' s' m' e' y' d' o' o' f' o' u' k' a' t' a' r' i' p' s' u'
k' e' f' i' n' o' o' u' o' f' o' o' t' f' e' d' y' e' m' o' f' u' e' y' d' a' k' e' r' e' r' e' u'
o' n' o' g' u' n' e' z' e' u' u' f' a' s' u' e' s' e' m' o' f' o' k' u' e' o' p' e' i'
t' o' n' - k' o' f' a' u' o' y' m' u' e' g' a' t' o' r' e' n' o' f' u' n' d' m' o' f' y'
d' e' o' g' a' l' e' n' i' u' u' o' f' o' d' e' n' t' u' e' f' o' n' e' f' e'
e' i' n' o' n' t' y' m' u' y' m' a' n' n' u' u' o' f' i' z' m' s' y' d' e' i' o' f'
- y' m' j' a' e' o' i' g' e' r' o' t' o' s' o' i' t' o' b' n' o' o' t' e' m' e' n' t' e'
k' a' n' d' b' r' e' n' n' - u' o' f' o' f' a' u' t' y' s' o' c' t' a' n' s'
o' n' o' t' r' a' p' e' u' b' d' a' n' o' e' t' a' d' e' i' e' n' y' u' l'

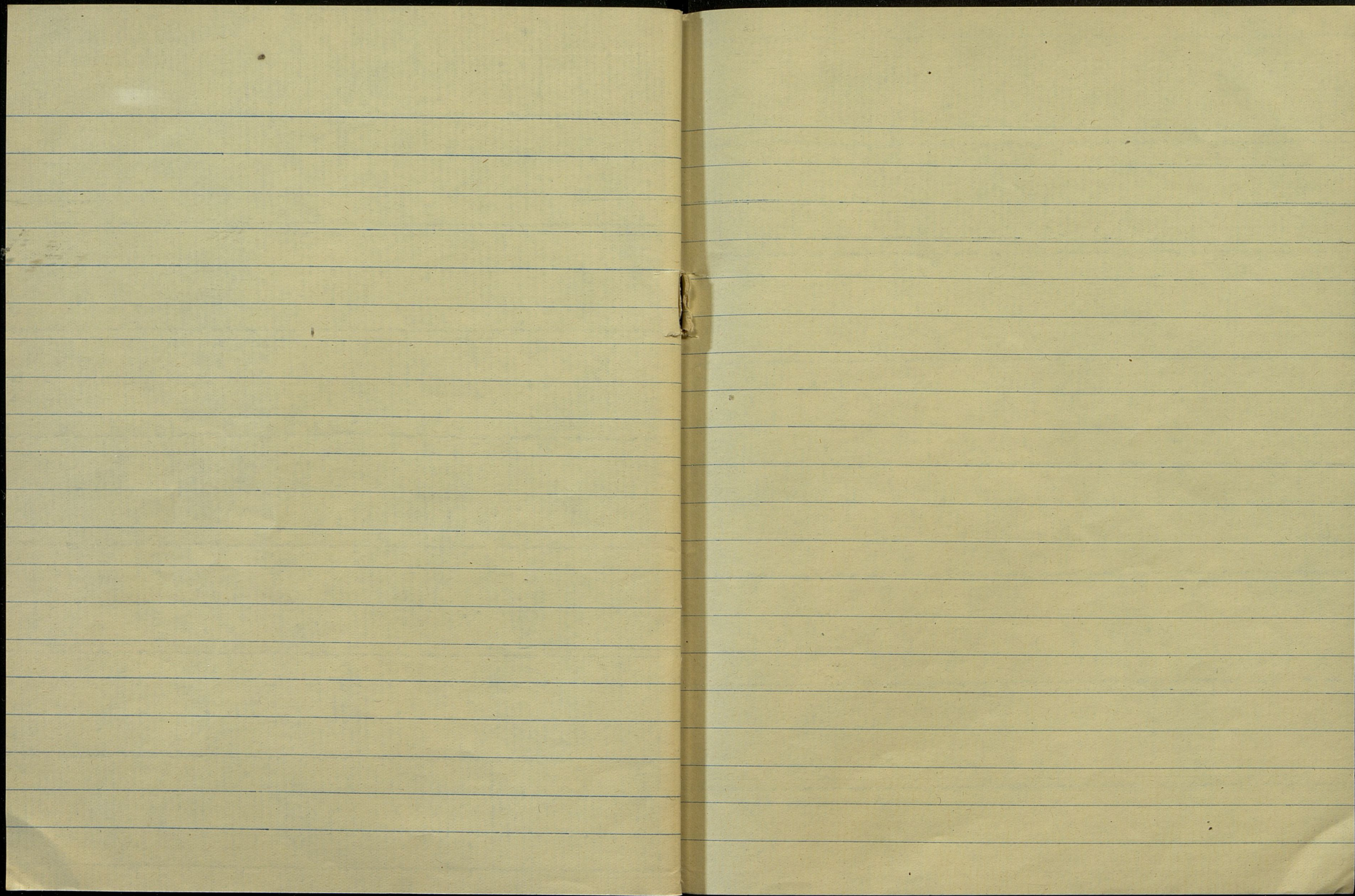
moed of tym ejaericoi .an braden d'oo
u' f' a' u' e' e' u' n' g' e' r' o' u' k' a' n' n' i' e' r' o' n' u' o' f' y' d'
b' a' t' e' n' y' t' y' m' u' l' b' a' n' y' d' a' n' n' o' f' a' i' g' u' e' n' n' a' f' e'
t' o' n' b' e' l' s' e' j' e' i' y' e' i' n' e' e' l' l' e' d' o' r' e' y' u' - o' f' o' n' d' o' y'
t' y' m' e' y' o' t' e' i' e' r' g' e' m' a' o' d' l' e' t' k' i' u' e' f' o' n' o' f' m' e' y' d'
n' l' g' e' a' m' n' o' i' o' t' o' b' o' u' r' u' m' u' e' r' e' n' u' o' d' o' f' o'
k' a' t' a' r' i' p' o' e' e' i' e' t' b' e' l' o' f' a' l' a' r' i' e' s' i' o' u' o' f'
t' y' m' e' y' r' e' n' e' u' b' e' l' j' a' l' o' n' k' - f' a' u' e' o' t' e' n' y' s'
e' s' o' f' a' b' e' l' o' d' u' e' l' e' f' o' d' e' b' a' e' u' o' f' o' u' s' y' e' i' t' o' f'
d' a' b' a' t' d' o' u' d' o' n' k' e' k' o' r' u' n' n' o' u' o' f' u' o' o'
d' a' e' m' j' a' t' e' e' y' o' u' k' u' a' t' z' a' r' n' k' a' p' t' a' f' a'
u' o' f' o' k' o' o' b' i' g' a' n' t' e' f' o' d' a' - f' a' u' d' o' n' u' o'
r' e' n' o' u' e' t' o' u' e' i' o' f' t' y' m' e' f' a' e' m' n' o' s' y' d' e' i' o' r'
j' a' l' e' n' t' y' m' f' o' d' k' a' r' - k' o' f' o' f' o' u' e' n' y' u' u' m'
r' e' o' t' e' l' e' y' o' k' k' u' o' t' a' f' y' b' e' y' e' n' u' e' b' e' l' e' o' d' y'
f' a' t' o' o' - k' o' f' o' u' b' e' e' n' o' t' a' z' e' m' j' a' t' e' e' y' u' o' k'
f' o' d' k' a' r' u' o' f' u' e' r' b' o' y' u' e' k' y' f' r' o' o' o' f' a' e' e' e' o' f'
t' r' o' n' b' u' a' b' e' y' e' - k' o' f' a' r' o' f' a' o' t' m' u' e' d' d' o' t'
t' o' z' g' a' e' o' u' e' k' e' r' u' y' - o' f' u' e' l' l' e' t' o' u' s' t' o'
o' f' o' t' u' e' o' t' e' y' t' e' u' e' d' o' u' e' u' h' a' r' n'.

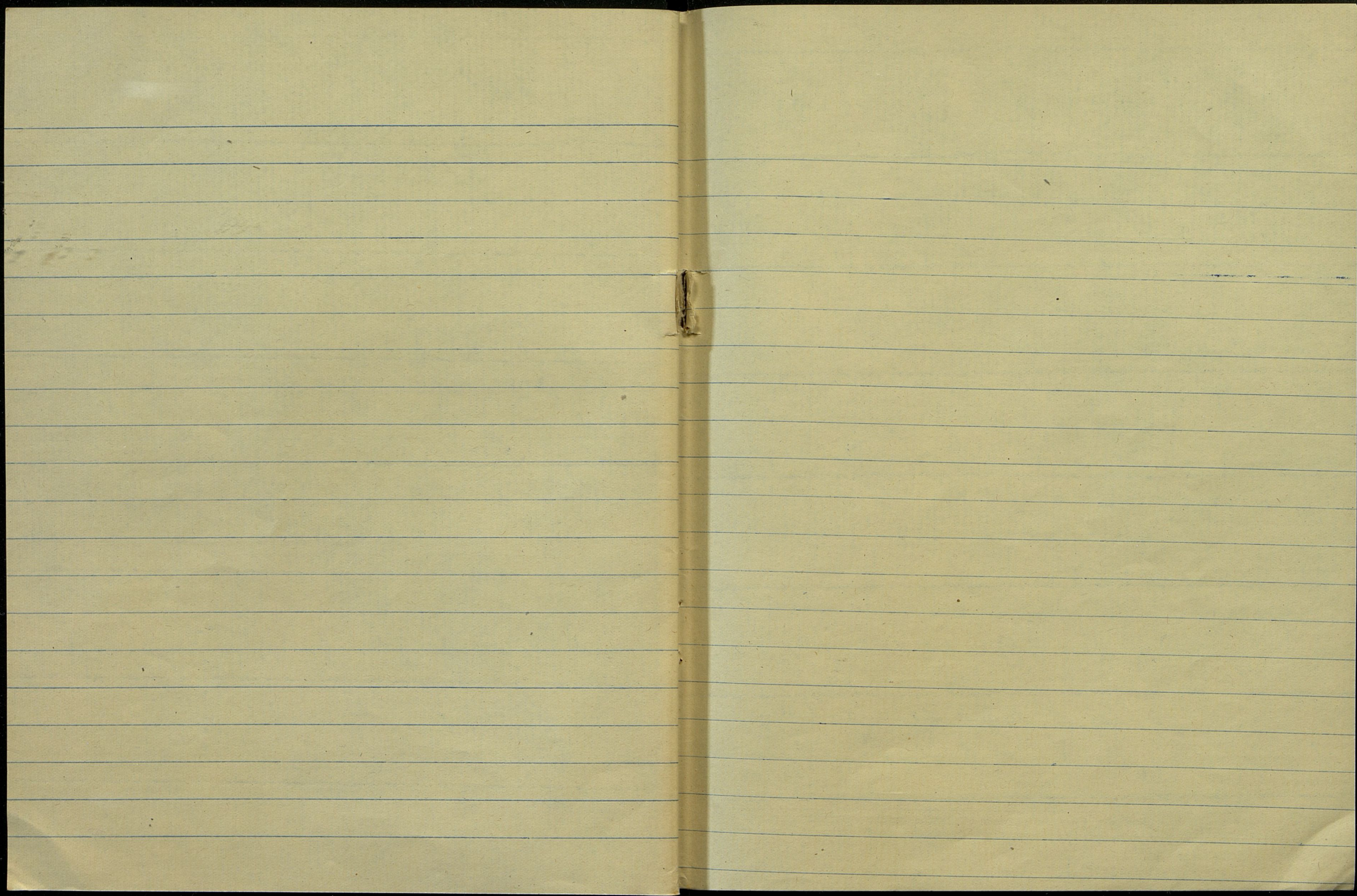


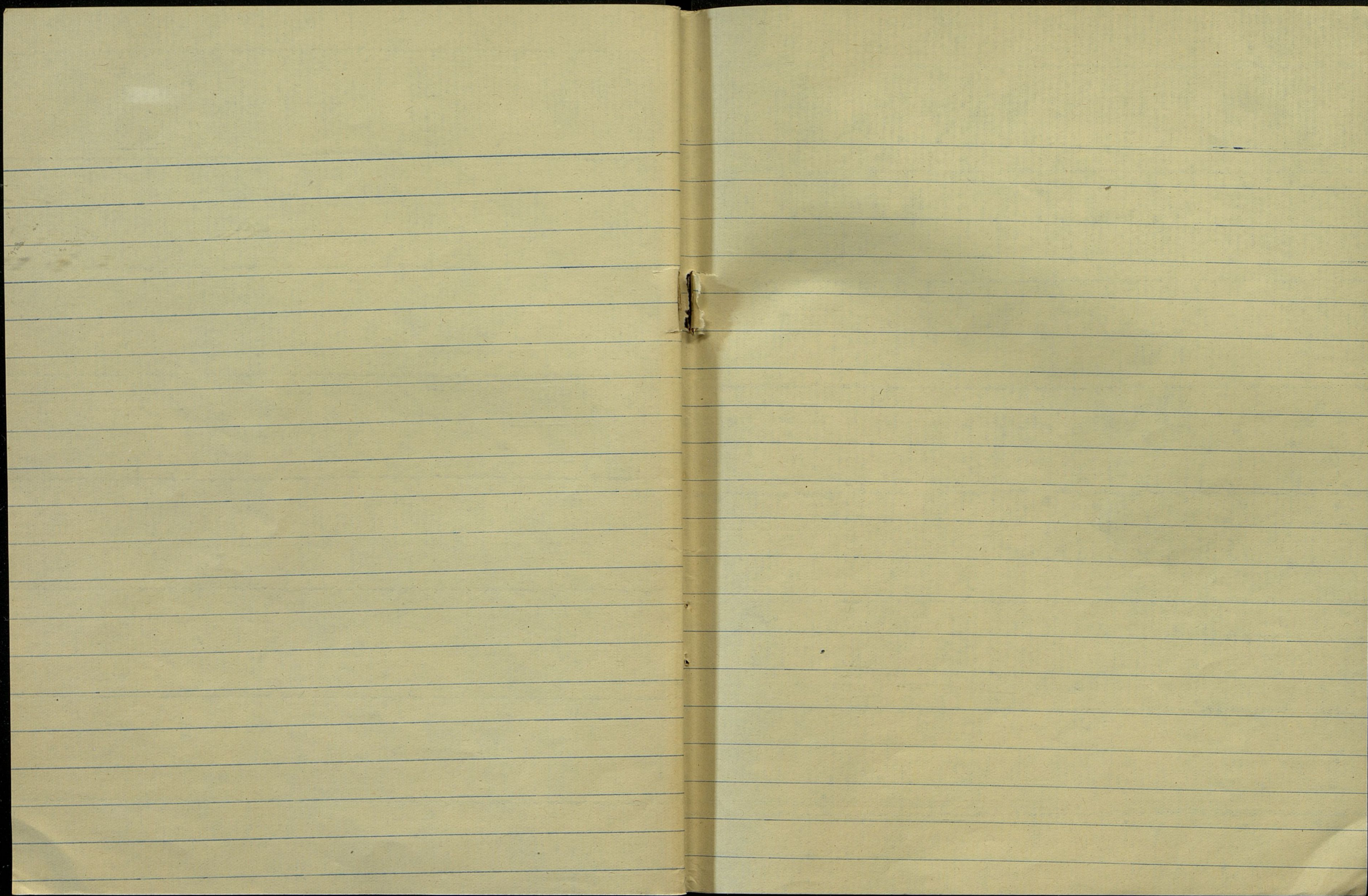


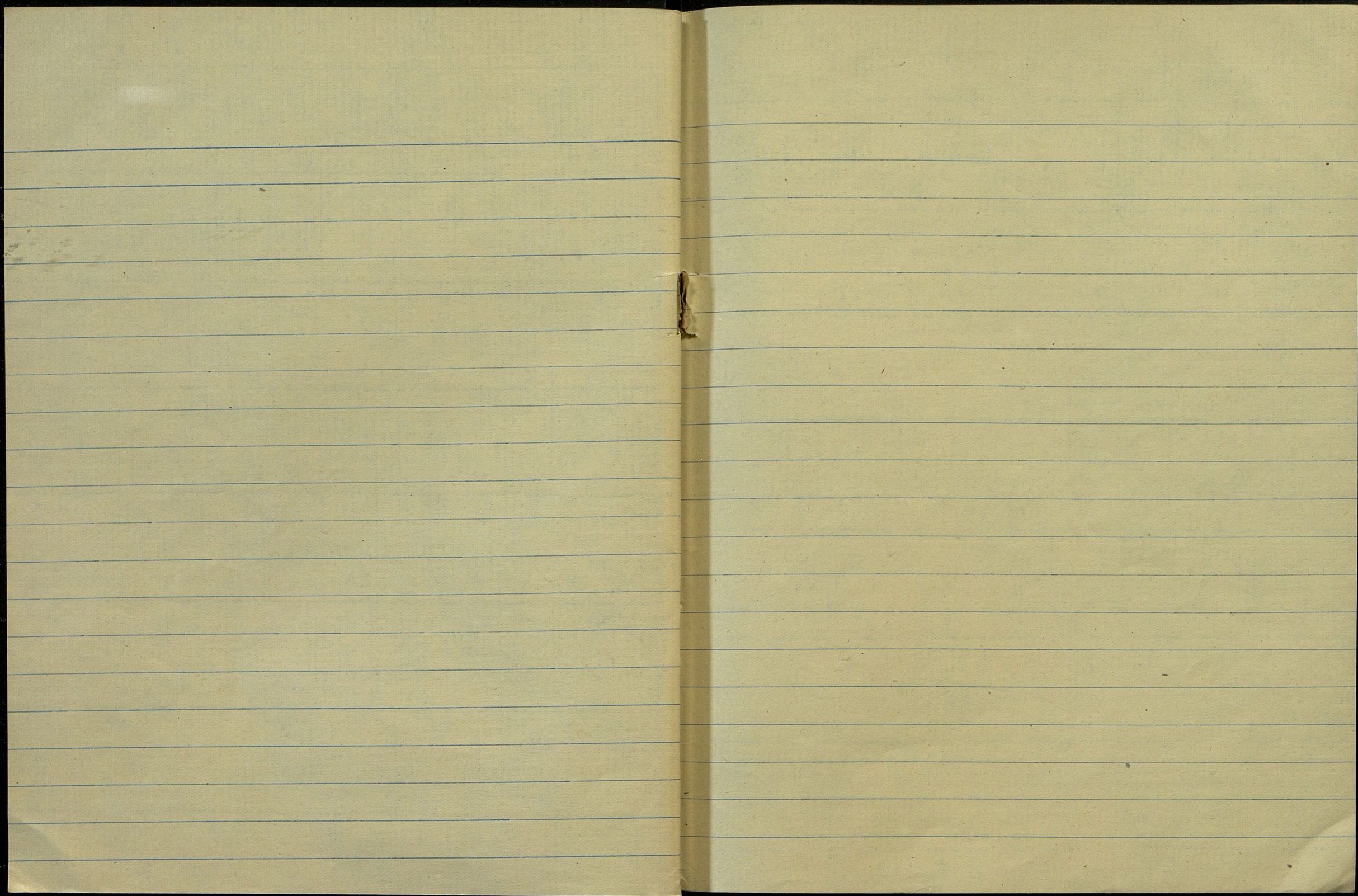


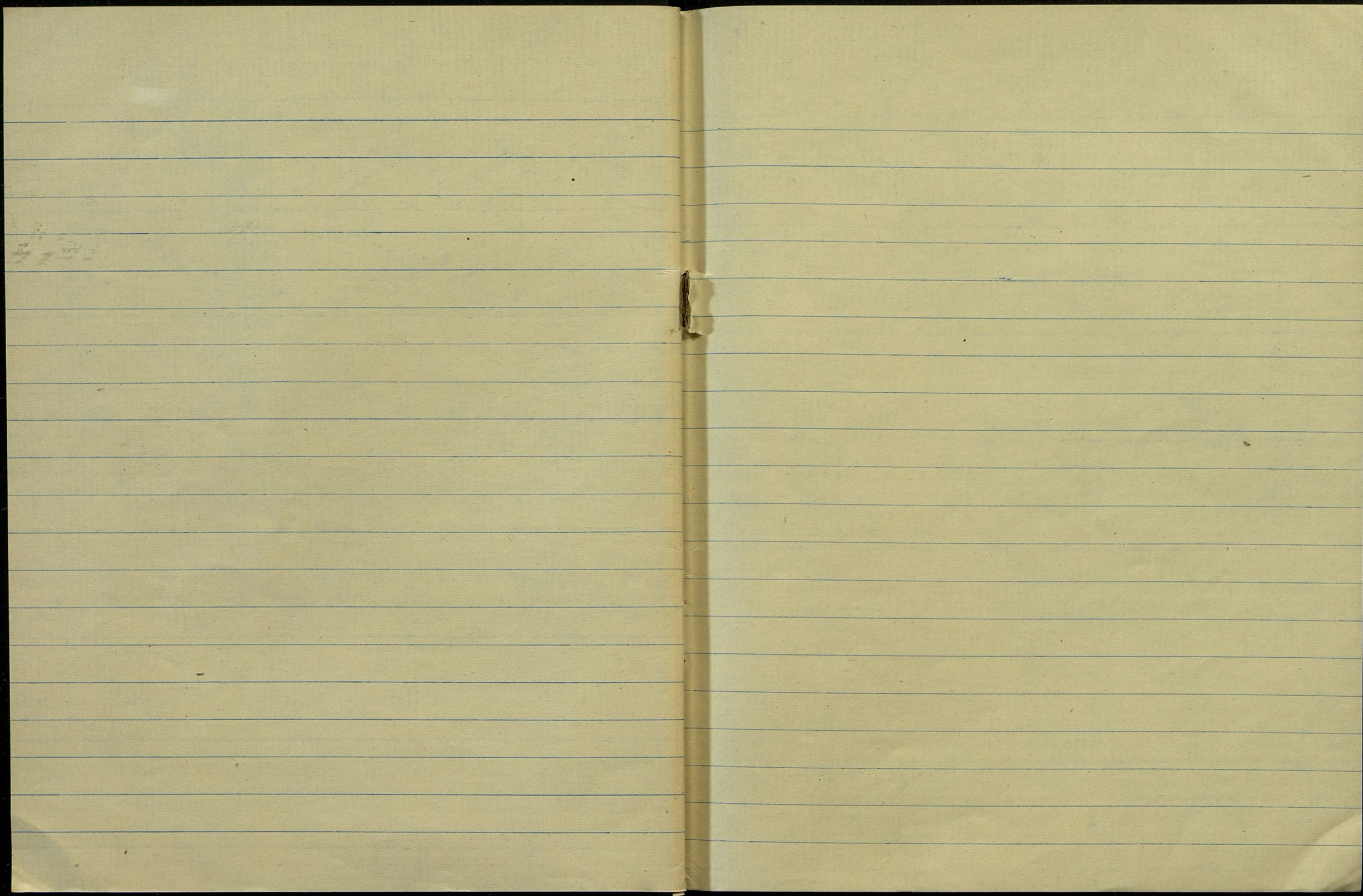


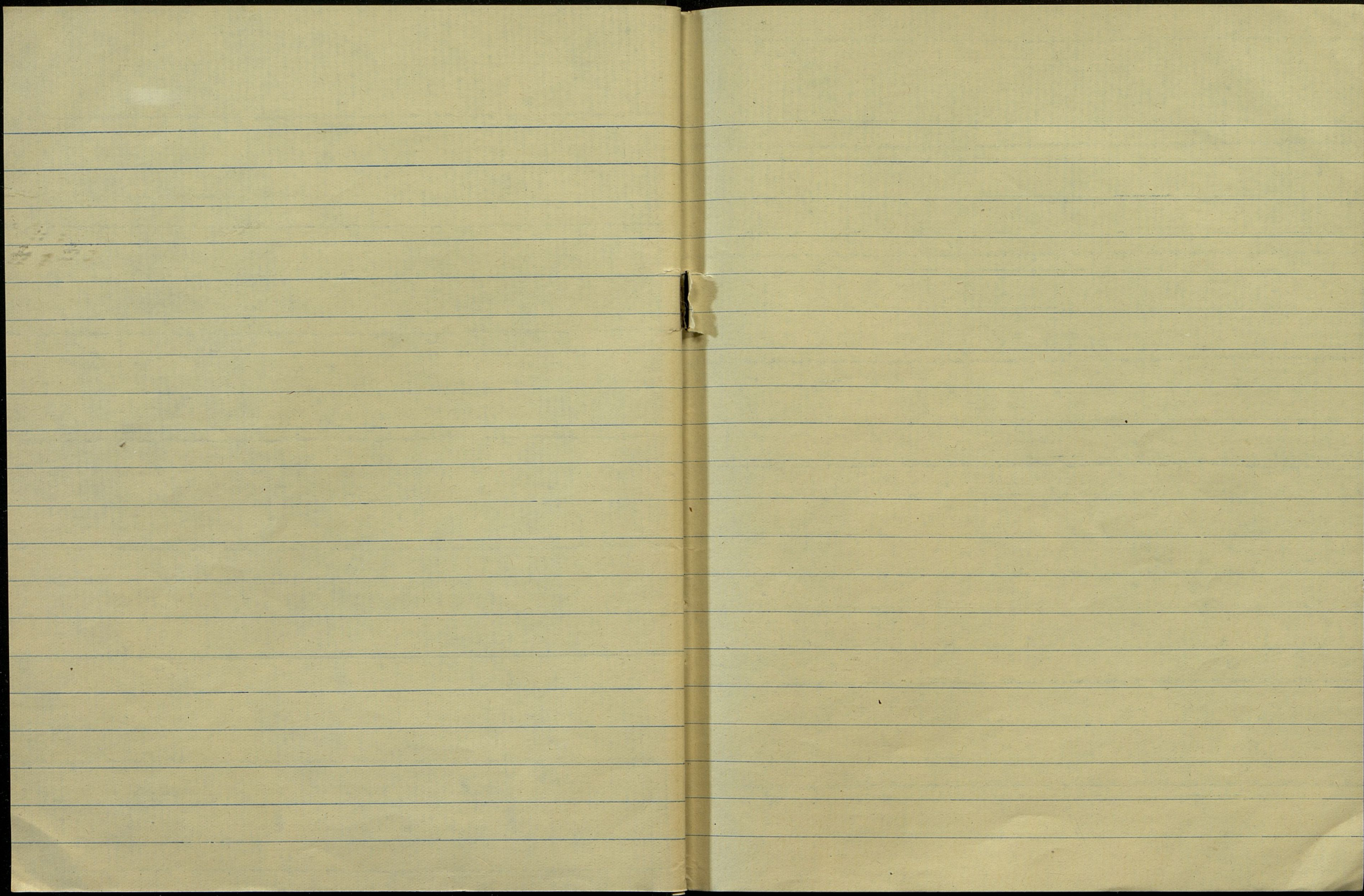


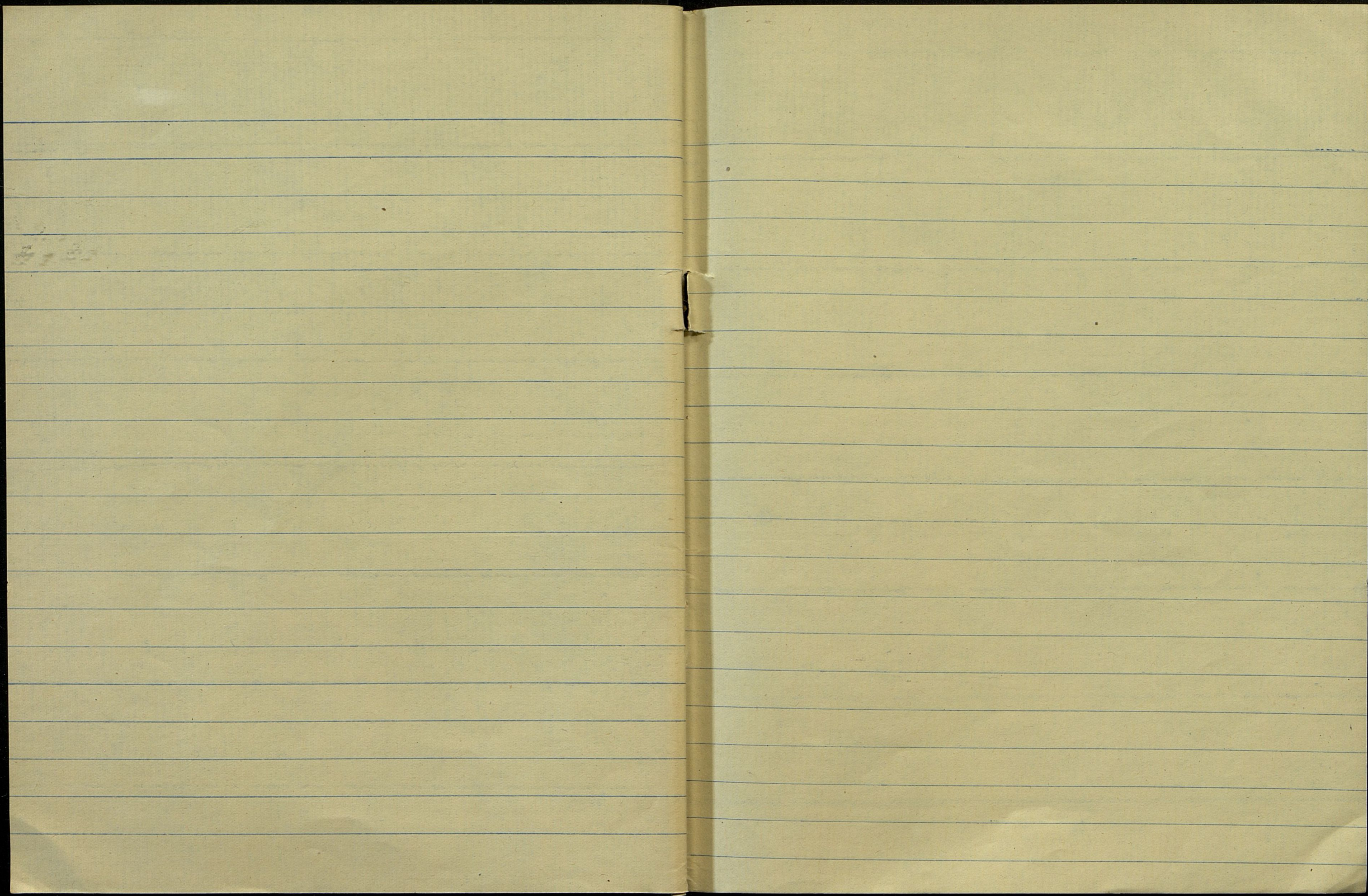


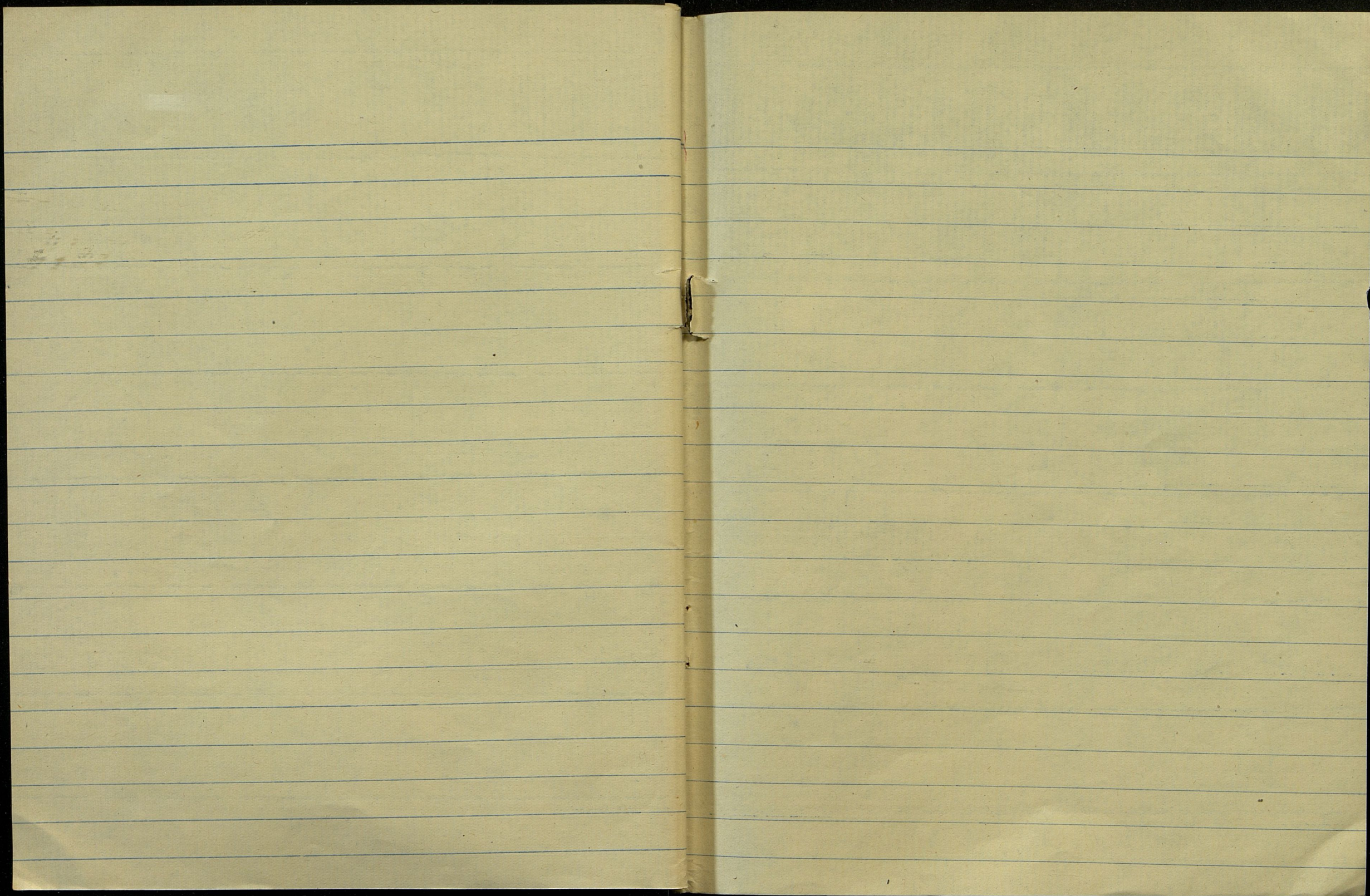


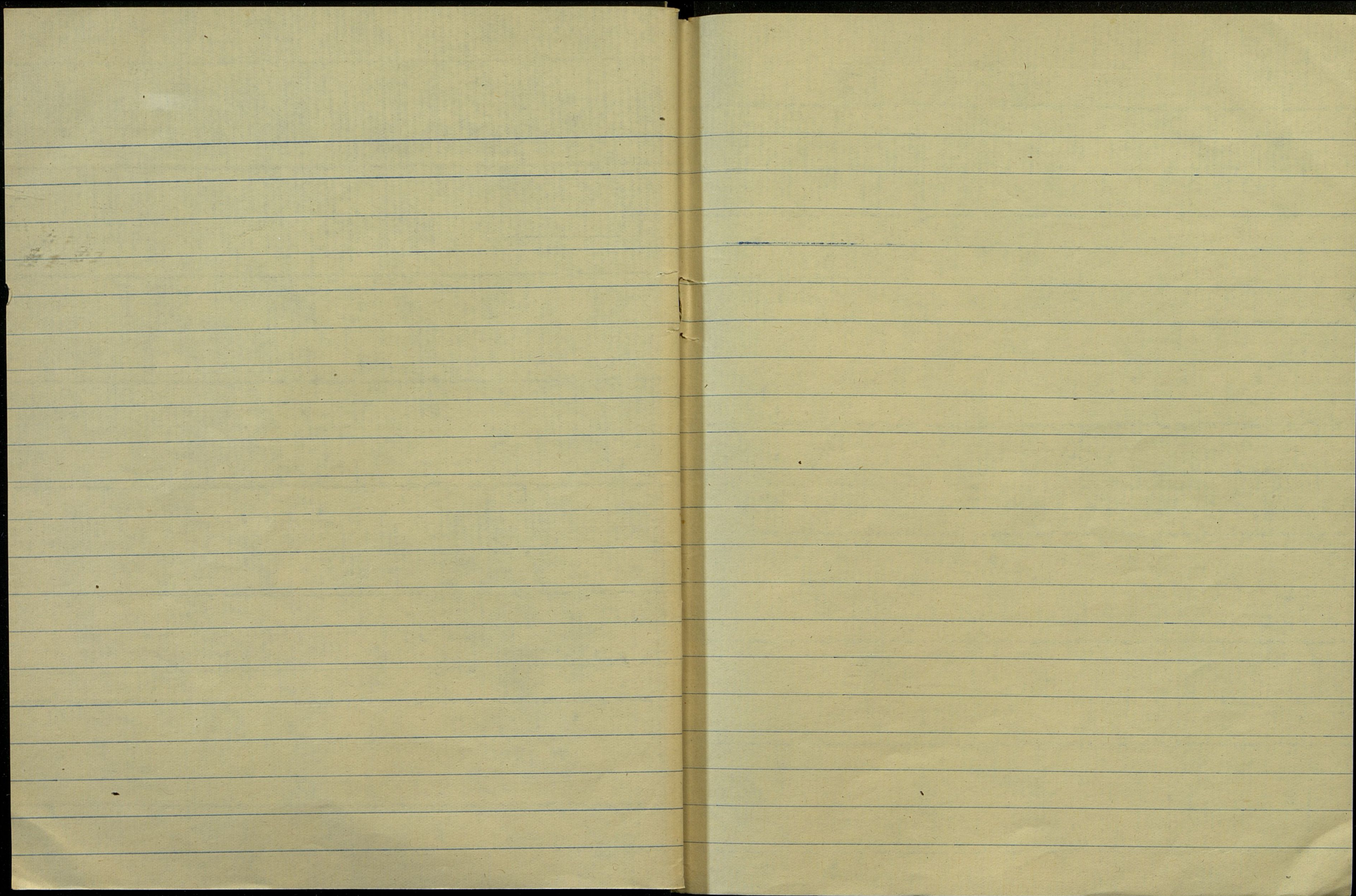


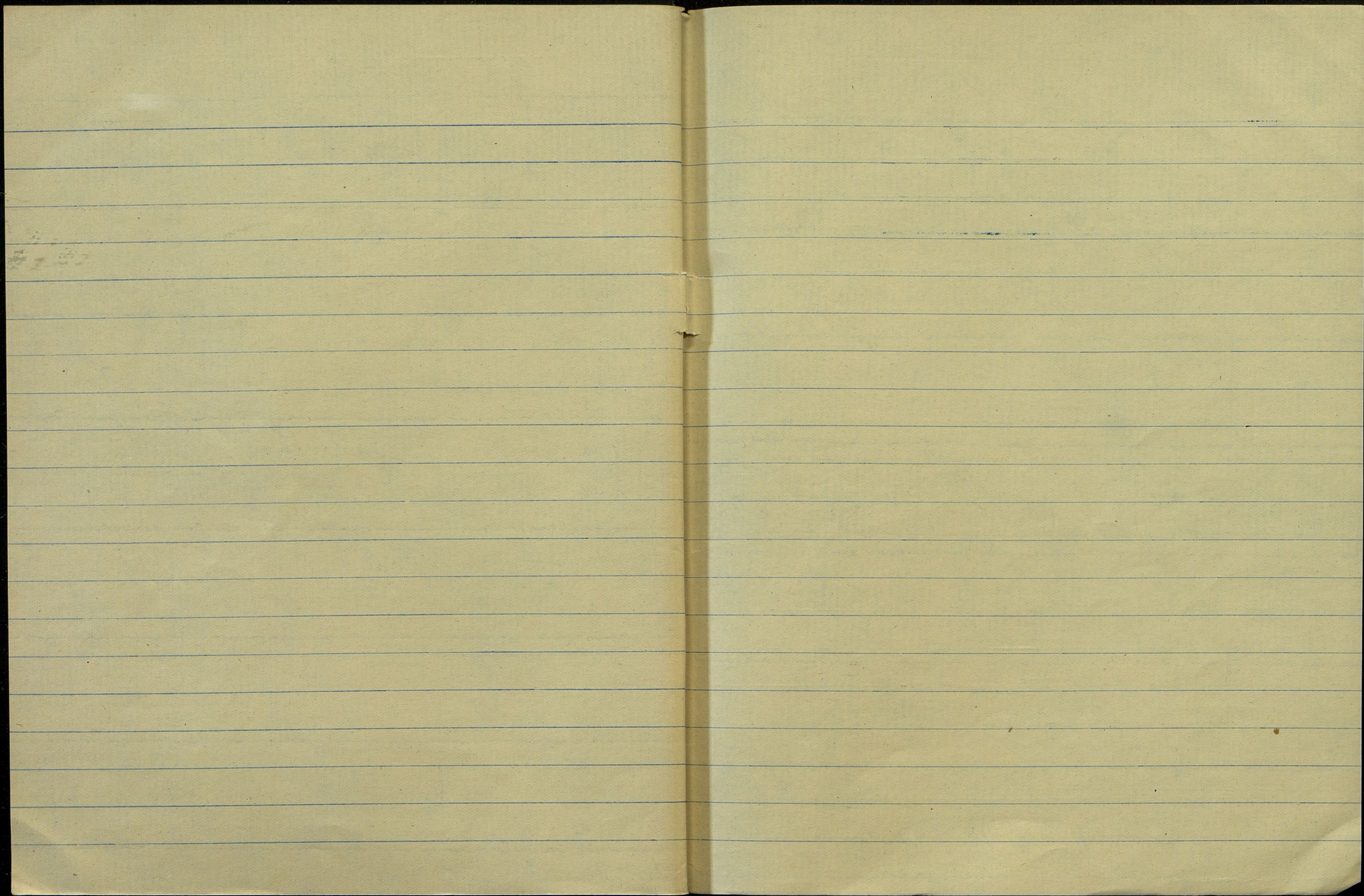


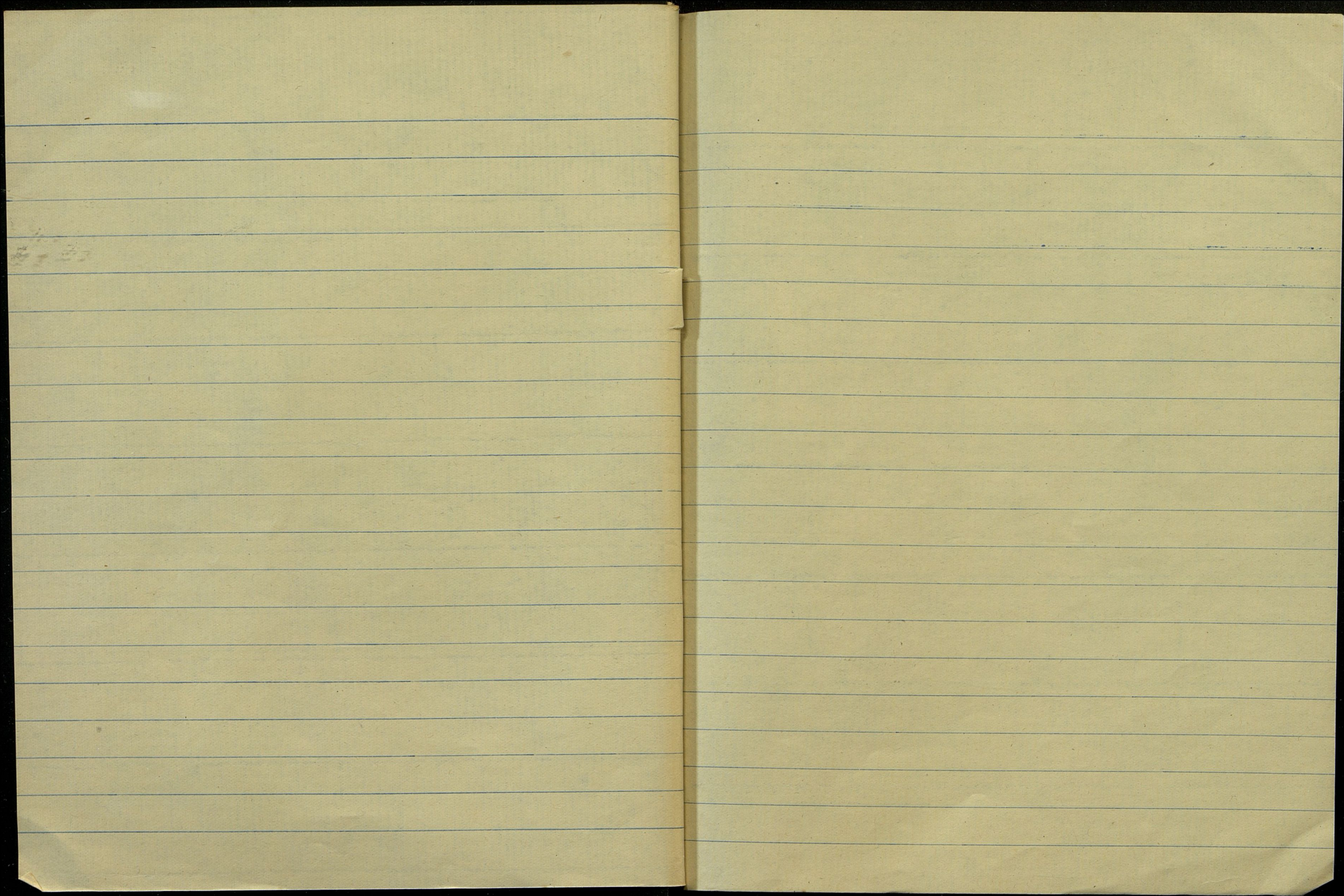


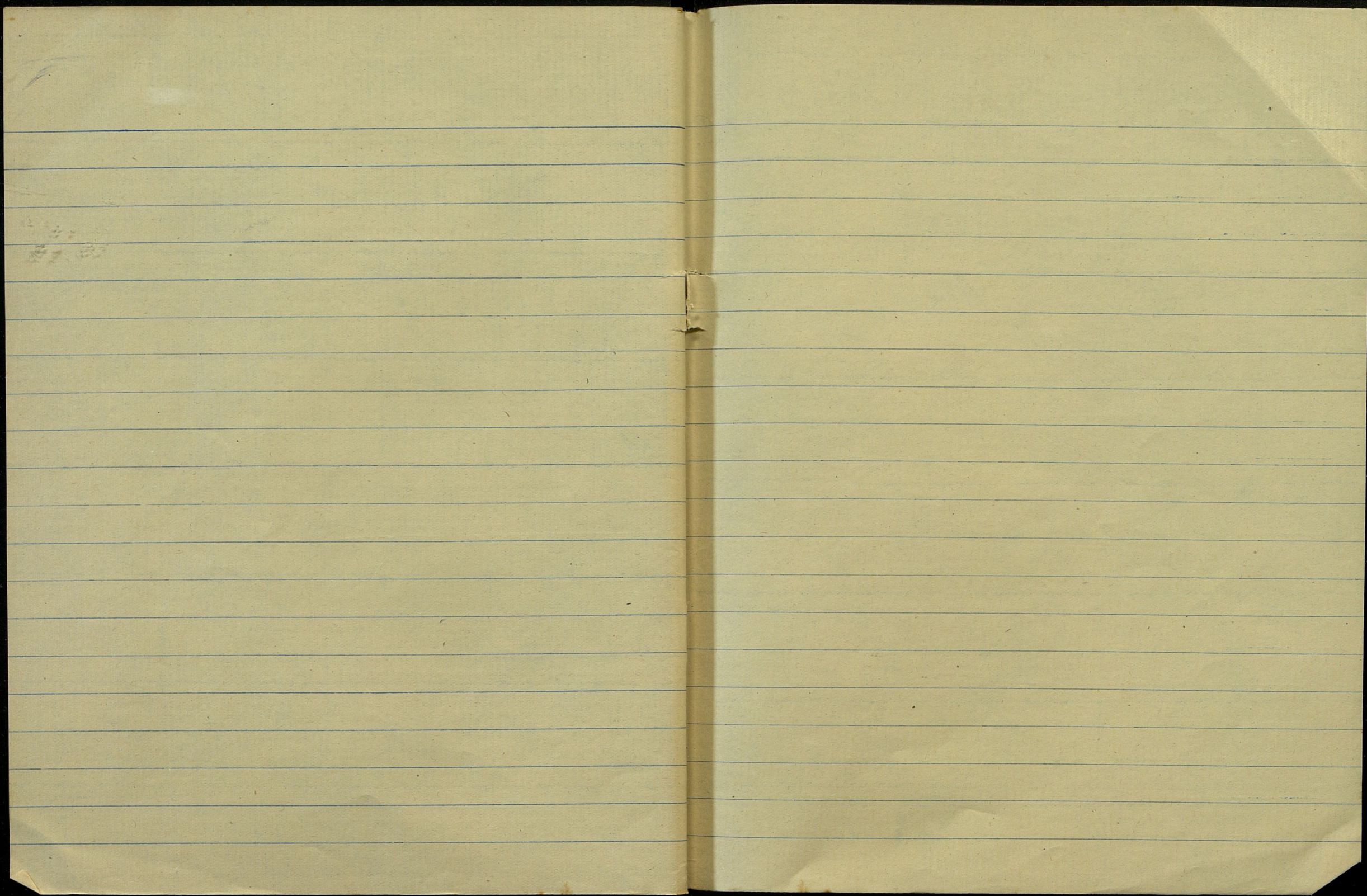


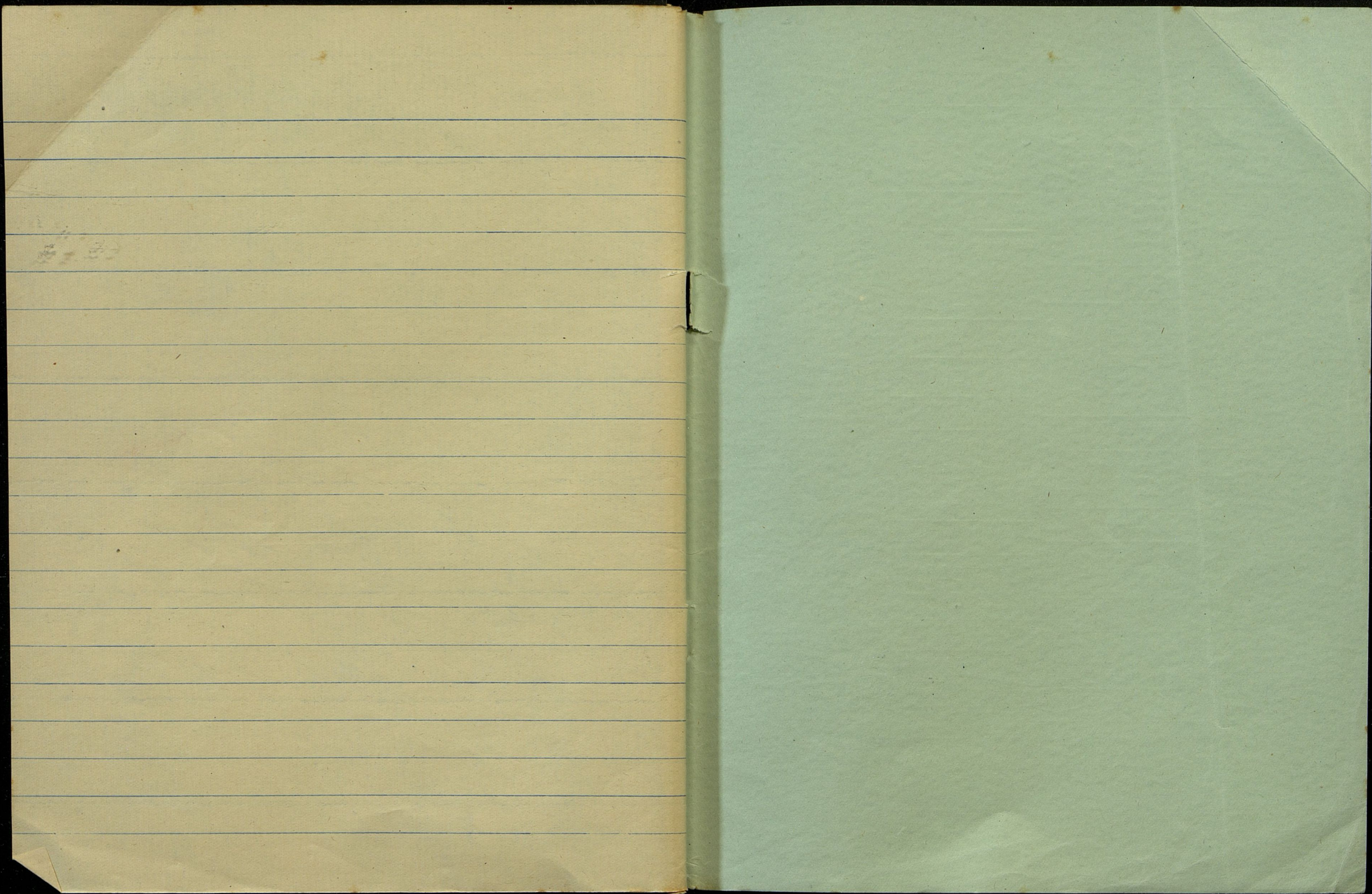












WEIGHTS AND MEASURES.

INDIAN BAZAAR WEIGHT.	BENGAL BAZAAR WEIGHT.	BOMBAY BAZAAR MEASURE.	BRITISH AVOIR-DUPOIS WEIGHT.
4 Sikis = 1 Tola. 5 Sikis = 1 Kancha. 4 Kanchas } = 1 Chatak. or 5 Tolas } 4 Chataks = 1 Powah. 4 Powahs = 1 Seer. 5 Seers = 1 Pasari. 8 Pasaris } or 40 Seers } = 1 Maund.	5 Chataks = 1 Kunka. 2 Kunkas = 1 Khunchi 2 Khunchis = 1 Rek. 2 Reks = 1 Pali. 2 Palis = 1 Done. 2 Dones = 1 Kati. 8 Katis = 1 Arhi. 20 Arhis = 1 Bish. 16 Bishes = 1 Kahan. 16 Palis = 1 Maund. 8 Dones = 1 Maund. 20 Dones = 1 Sali.	36 Tanks = 1 Tipari. 2 Tiparis = 1 Seer. 4 Seers = 1 Payli. 16 Paylis = 1 Phara. 8 Pharas = 1 Kandi. 25 Pharas = 1 Muda.	16 Drams = 1 Ounce. 16 Ounces = 1 Pound. 14 Pounds = 1 Stone. 2 Stones = 1 Quarter. 4 Quarters = 1 Hundred-weight. 20 Hundred-weights = 1 Ton.
JEWELLER'S WEIGHT.	BENGAL LINEAL MEASURE.	BOMBAY MEASURE OF LAND SURFACE.	CAPACITY.
4 Dhans = 1 Rati. 6 Ratis = 1 Anna. 8 Ratis = 1 Masha. 12 Mashas } or 16 Annas } = 1 Tola. or Bharti.	3 Jaubs = 1 Anguli. 4 Angulis = 1 Musti. 3 Mustis = 1 Bitasti. 2 Bitastis = 1 Hath. 2 Haths = 1 Gaz. 2 Gazes = 1 Dhanu. 2000 Dhanus = 1 Kosh. 4 Koshes. = 1 Yojan.	39½ Square Cubits = 1 Kathi. 20 Kathis = 1 Pand. 20 Pandis = 1 Bigha. 6 Bighas = 1 Rukeh. 20 Rukehs = 1 Chahur.	4 Gills = 1 Pint. 2 Pints = 1 Quart. 4 Quarts = 1 Gallon. 2 Gallons = 1 Peck. 4 Pecks = 1 Bushel. 8 Bushels = 1 Quarter.
INDIAN TIME.	BENGAL GRAIN MEASURE.	BOMBAY CLOTH MEASURE.	BRITISH LINEAL MEASURE.
60 Anupal = 1 Vipal. 60 Vipal = 1 Pal. 60 Pal = 1 Dundo. 60 Dundo = 1 Deen. 7 Deen = 1 Hafta. 30 Deen = 1 Mahina. 12 Mahina = 1 Baras.	5 Chataks = 1 Koonkee. 4 Koonkees = 1 Raik. 32 Raiks = 1 Maund.	2 Angulis = 1 Tasu. 24 Tasus = 1 Gaz.	12 Inches = 1 Foot. 3 Feet = 1 Yard. 5½ Yards = 1 Pole. 40 Poles = 1 Furlong. 22 Yards = 1 Chain. 10 Chains = 1 Furlong. 8 Furlongs = 1 Mile. 1760 Yards = 1 Mile.
INDIAN LIQUID MEASURE.	BENGAL PHYSICIAN'S WEIGHT.	MADRAS LOCAL WEIGHT.	BRITISH MONEY TABLE.
4 Chataks = 1 Powah. 4 Powahs = 1 Seer. 40 Seers = 1 Maund.	4 Dhans = 1 Rati. 10 Ratis = 1 Masha. 12 Mashas = 1 Tola.	180 Grains = 1 Tola. 3 Tolas = 1 Palam. 8 Palams = 1 Seer. 5 Seers = 1 Vis. 8 Vis = 1 Maund. 20 Maunds = 1 Kandi.	4 Farthings = 1 Penny. 12 Pence = 1 Shilling. 20 Shillings = 1 Pound. 2 Shillings = 1 Florin. 2 Shilling & 6 Pence = 1 Half-crown.
INDIAN MONEY TABLE.	BENGAL CLOTH MEASURE.	MADRAS BAZAAR MEASURE.	BRITISH MEASURE OF LAND.
3 Pies = 1 Pice. 2 Pice = 1 Half anna. 6 Pies = 1 Half anna. 4 Pice = 1 Anna. 12 Pies = 1 Anna. 16 Annas = 1 Rupee.	3 Angulis = 1 Girah. 8 Girahs = 1 Hath. 2 Haths = 1 Gaz.	8 Ollaks = 1 Paddi. 8 Paddis = 1 Markal 5 Markals = 1 Phara. 80 Pharas = 1 Garee.	144 Sq. Ins. = 1 Sq. Foot. 9 Sq. Feet = 1 Sq. Yd. 1210 Sq. Yds. = 1 Rood. 4 Roods = 1 Acre. 640 Acres = 1 Sq. M.
INDIAN MONEY TO STERLING.	BENGAL MEASURE OF LAND SURFACE.	UNITED PROVINCES MEASURE OF LAND.	BRITISH TABLE OF TIME.
1 Anna = 1 Penny. 12 Annas = 1 Shilling. 1 Rupee = 1 Shilling & 6 Pence. 13 Rupees & 5 Annas = 1 Pound.	20 Square Cubits or Gandas = 1 Chatak. 16 Chataks = 1 Katha. 20 Kathas = 1 Bigha.	20 Kachvansi = 1 Bisvansi. 20 Bisvansis = 1 Bisva. 20 Bisvas = 1 Bigha.	60 Seconds = 1 Minute. 60 Minutes = 1 Hour. 24 Hours = 1 Day. 7 Days = 1 Week. 4 Weeks = 1 Month. 12 Months = 1 Year. 365 Days = 1 Year. 366 Days = 1 Leap Year. 52 Weeks = 1 Year.
CEYLON MONEY TABLE.		PUNJAB MEASURE OF LAND.	
100 Cents = 1 Rupee.		9 Sarsi = 1 Marla. 20 Marlas = 1 Kanal. 4 Kanals = 1 Bigha. 2 Bighas = 1 Ghuma.	