

knitter-switch

- > Encoders
- > Tact Switches
- > Slide Switches
- > Rotary Switches
- > Toggle Switches
- > Pushbutton Switches
- > Dual-in-line Switches
- > Rotary Coded Switches
- > Micro Switches
- > Membrane Keypads
- > Steel Keyboards



50 years
knitter-switch

Product Profile **2016**

Contents

Toggle Switches	4
Pushbutton Switches	7
Tact Switches	11
Slide Switches	13
Dual-in-line Switches	15
Rotary Coded Switches	17
Rotary Switches	18
Encoders	19
Micro / Snap Action Switches	20
Membrane Keypads	21
Steel Keyboards	21
Distributors	22
Contact	24

Toggle Switches



Miniature toggle switches

Standard series: MTA, MTE, MTG,
MTL, MTW, MZME, STM

Mounting options available:

- > Solder lugs
- > Right angle mounting
- > PC terminals



Features:

- > Waterproof versions available
- > Washable versions available
- > ESD proof series available
- > Special levers available:
short, flat, locking, mustang
- > Special versions on request



Typical applications:

- > Industrial equipment
- > Medical products
- > Telecommunications
- > Aeronautics
- > Farm machinery
- > Musical instruments



Toggle Switches

Subminiature toggle switches

Standard series:
ATE, SST, TST



Mounting options available:

- > Right angle mounting
- > Vertical mounting
- > PC terminals
- > SMD



Features:

- > Waterproof
- > Washable
- > ESD proof series available
- > Special versions on request



Typical applications:

- > Measurement
- > Industrial controls
- > Medical products
- > Telecommunications
- > Consumer Products



Toggle Switches



Microminiature toggle switches

Standard series: FT



Mounting options available:

- > Right angle mounting
- > Vertical mounting

Features:

- > Washable
- > ESD proof
- > Special versions on request



Typical applications:

- > Industrial equipment
- > Medical products
- > Telecommunications
- > Measurement



Pushbutton Switches

Miniature pushbutton switches

Standard series: MPBS, MPSA,
MPA, MPE, MPG, MPS, MSP



Mounting options available:

- > Solder lugs
- > Right angle mounting
- > PC terminals

Features:

- > Waterproof versions available
- > ESD proof series available
- > Special levers: heavy duty, snap action
- > Accessories: buttons, caps, nuts, covers
- > Special versions on request



Typical applications:

- > Measurement
- > Industrial equipment
- > Medical products
- > Telecommunications
- > Home entertainment
- > Farm machinery
- > Studio and stage equipment



Pushbutton Switches



Subminiature pushbutton switches

Standard series:
APE, MZP, SSP, TSP

Mounting options available:

- > Solder lugs
- > Right angle mounting
- > PC terminals
- > SMD



Features:

- > Washable versions available
- > ESD proof series available
- > Special versions on request



Typical applications:

- > Measurement
- > Industrial controls
- > Medical products
- > Telecommunications



Pushbutton Switches

Microminiature pushbutton switches

Standard series:
FP, SSP

Mounting options available:

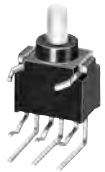
- > Right angle mounting
- > Vertical mounting
- > SMD

Features:

- > Washable
- > ESD proof
- > Special versions on request

Typical applications:

- > Industrial equipment
- > Medical products
- > Telecommunications
- > Measurement



Pushbutton Switches



Tactile and illuminated pushbutton switches

Standard series: DPL, DPW, DPWL, LP, LTM, LTR, MAV, MPLS, TM, TP, TR, TSSL



Mounting options available:

- > Solder lugs
- > PC terminals
- > SMD



Features:

- > Waterproof and washable series available
- > Anti-Vandal Switches available
- > Momentary and latching versions
- > Versions with 1 – 4 LEDs available
- > Various LED colours available
- > Rubber contact for silent actuation
- > Big range of caps and bezels
- > Special versions on request



Typical applications:

- > Switch boards
- > Audio equipment
- > Telecommunications
- > Human machine interfaces (HMI)
- > Automotive



Tact Switches

Tact switches

Standard series: TME, TMP, TMS, TMSE, TS, TSS, TSSE, TSE

Mounting options available:

- > Right angle
- > THD
- > SMD
- > SMD J-Hooks

Features:

- > Waterproof and washable
- > Industrial contact rating available
- > Various accessories: buttons, caps
- > Ultra flat series available
- > Special versions on request

Typical applications:

- > Consumer electronics
- > Automotive
- > White goods
- > Telecommunications
- > Industrial equipment
- > Home automation



Tact Switches

Multi-function switches



Standard series:
PLSJ, TSJ, TSSJ

Mounting options available:

- > THD
- > SMD
- > SMD J-Hooks



Features:

- > Mini joysticks (7 x 7mm)
- > Rugged joysticks
- > Ultra flat series
- > Side operated version
- > Special versions on request



Typical applications:

- > Consumer electronics
- > Automotive
- > Telecommunications
- > Industrial equipment
- > Home automation
- > Measurement



Slide Switches

Miniature slide switches



Standard series:
ASE, MFP, MFS, MSS

Mounting options available:

- > Solder lugs
- > PC terminals
- > Right angle mounting



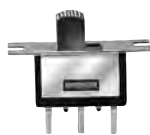
Features:

- > Washable series available
- > Low cost series available
- > Shorting and non-shorting versions
- > Special versions on request



Typical applications:

- > Consumer electronics
- > Industrial controls
- > Telecommunications
- > Home automation
- > Professional audio equipment



Slide Switches



Microminiature slide switches

Standard series:
MMP, MMS



Mounting options available:

- > THD
- > SMD
- > Right angle mounting



Features:

- > Low cost series available
- > Additional pushbutton function available
- > Tape and reel packing available
- > Special versions on request



Typical applications:

- > Consumer electronics
- > Industrial controls
- > Telecommunications
- > Medical products
- > Home appliances



Dual-in-line Switches

Professional dual-in-line switches



Standard series:

DHS, DHP, DSS, SBP, SMS

Mounting options available:

- > PC terminals
- > SMD
- > SMD half-pitch



Features:

- > Industrial contact rating available
- > Ultra low profile series available
- > Piano types
- > Gold-plated
- > Special versions on request



Typical applications:

- > Industrial controls
- > Medical products
- > Telecommunications
- > Measurement
- > Automotive
- > Railway
- > Filling station equipment



Dual-in-line Switches

Low cost dual-in-line switches



Standard series:
DBS, DBP, DHS, SBS, SBP

Mounting options available:

- > PC terminals
- > SMD
- > SMD half-pitch



Features:

- > End-stackable versions available
- > Piano types
- > Gold-plated or tin-plated versions available
- > Special versions on request



Typical applications:

- > Consumer products
- > Home automation
- > Medical products
- > Telecommunications
- > Measurement
- > Industrial automation



Rotary Coded Switches

Rotary Coded switches



Standard series:
DRR, DRS, SMR, SMRR



Mounting options available:

- > THD
- > Right angle mounting
- > Front panel mounting
- > SMD



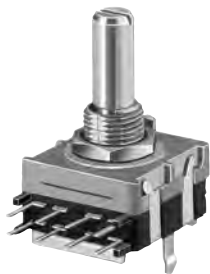
Features:

- > 2 pinning versions available (3:3, 4:1)
- > Flat types available
- > Different sizes available (10 x 10, 7 x 7)
- > 4 codings available
- > Various caps available
- > Special versions on request



Typical applications:

- > Home appliances
- > Industrial automation
- > Telecommunications
- > Measurement



Rotary Switches

Miniature rotary switches



Standard series:

MR, MRK, MRS, SMR

Mounting options available:

- > PC terminals
- > Solder lugs
- > Front panel mounting
- > SMD

Features:

- > Waterproof versions available
- > Various switching functions (1 - 4 poles, 1 - 12 positions)
- > Key switches available
- > Microminiature switch available
- > Special versions on request



Typical applications:

- > White goods
- > Medical products
- > Industrial automation
- > Telecommunications
- > Measurement



Encoders

Encoders



Standard series:
MER, MERP, MRP, MEOP

Mounting options available:

- > PC terminals
- > Right angle mounting
- > SMD



Features:

- > Various shafts and heights available
- > Additional push function available
- > Illuminated switches available
- > Special versions on request
- > Optical encoder

Typical applications:

- > Home automation
- > Medical products
- > Automotive
- > Measurement



Micro / Snap Action Switches

Micro / Snap action switches



Standard series:
DM, TMV



Mounting options available:

- > PC terminals
- > Front panel mounting



Features:

- > VDE and UL approvals
- > Waterproof versions available
- > Subminiature and microminiature switches available
- > Special versions on request



Typical applications:

- > Applications requiring BSI safety approval
- > Elevator controls
- > Application settings
- > Tooling machines



Membrane Keypads Steel Keyboards

Membrane keypads

Individual design



Features:

- > Graphic overlay only
or full switching membrane
- > Metal or polydome contacts
- > Tactile or non-tactile feel
- > Integral SMD LEDs
- > LCD windows
- > ESD/RFI shielding
- > Insertable legend options
- > **New:** pushgate
- > **New:** capacitive keyboard
- > **New:** touch screens

Steel keyboards

Individual design



Features:

- > 3 different lines
- > Up to IP 69K
- > Soft touch keys

Distributors

Europe

Pan-European

Arrow Europe

Avnet Abacus

Rutronik

Local

ACTE A/S (Denmark)

Anglia (United Kingdom)

Burisch Elektronik Bauelemente (Austria)

Foremost Electronics Ltd (United Kingdom)

Mitem S.A. (France)

Multi-Bauelemente-Service (Germany)

Palladium Electronique (France)

Technolasa Elettronica (Italy)

Werner GmbH (Germany)

WCE-electronics (Spain)

South Africa

Actum Electronics (South Africa)

Distributors

USA

JL Optimus INC (Saint Charles, IL)

Asia

Arrow Asia PAC (Hong Kong)

Arrow Components (New Zealand)

Arrow Electronics (Australia)

Arrow Electronics Distribution (China)

Arrow Electronics (S) Pte Ltd (Singapore)

Chuo & Co., Ltd (Japan)

GSK Electronics Pte Ltd (Singapore)

MegaOne Technology Pte Ltd (Singapore)

Pioneer Electronics Co., Ltd (China)

SK Electronics Co, Ltd (Japan)

Catalogue Distributors / Web Shops

Chip One Stop, Inc

Conrad Electronics

Farnell

RS Components

Distrelec

Contact

Germany: knitter-switch Headquarter
Neue Poststr. 17, D-85598 Baldham
Phone: +49 (0)8106 3621-0
Fax: +49 (0)8106 3621-40
E-Mail: knitter@knitter.de

United Kingdom: knitter-switch UK Limited
Grove House, Lutyens Close
Chineham Court,
UK-Basingstoke RG24 8AG
Phone : +44 (0)1256 338670
Fax : +44 (0)1256 338671
E-Mail: ksuk@knitter-switch.com

**Scandinavia: knitter-switch
office Scandinavia**
Østersøvej 6, DK-4872 Idestrup,
Denmark
Phone : +45 6913 7787
E-Mail: j.hansen@knitter-switch.com

**France: knitter-switch
Succursale France**
Parc Club Orsay Université
18 rue Jean Rostand, F-91400 Orsay
Phone : +33 (0)1693 31160
Fax: +33 (0)1693 31180
E-Mail: ksfrance@knitter-switch.com

ASIA: knitter-switch Asia Limited
B9-B10, Block B,
1/F Proficient Industrial Centre,
6 Wang Kwun Road, Kowloon Bay,
Kowloon, Hong Kong
Phone : +852 2311 8799
Fax: +852 2311 8739
E-Mail: d.yiu@knitter-switch.com.hk