

FROM THE FOUNDER OF THE #VIKISEWS BRAND

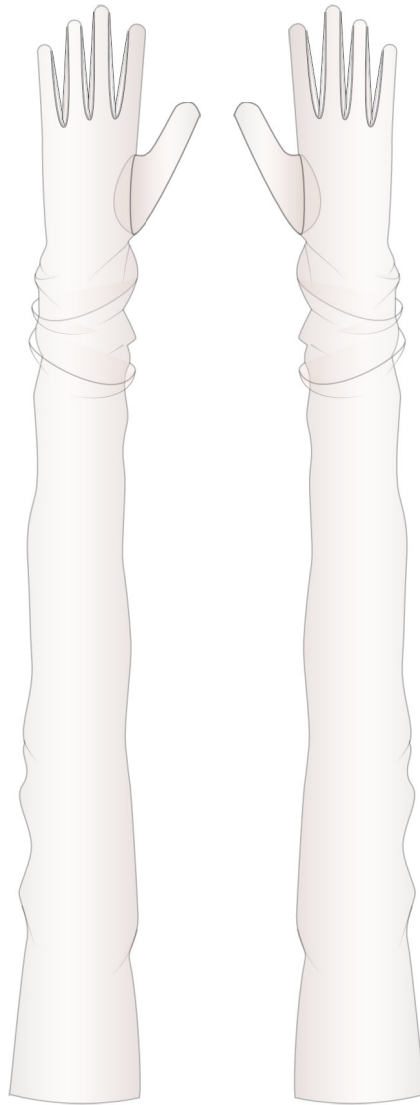


Back in 2016, when I was working on my first set of sewing instructions, I was trying to write them in such a way that even a complete beginner could easily understand and use them to create their very first garment. These instructions laid the foundation for the Vikisews brand, its vision and its mission. I wanted to create modern patterns with the utmost detailed and clear instructions.

Now, with each new collection we are constantly improving our instructions, amending them and adding more relevant details. By the time the final product reaches you, our drafters, correctors, and editors would have spent weeks perfecting every word and every photograph. If you compile a few of our instructions together, you will get a sewing manual that will assist you in sewing all kinds of garments at any difficulty level.

And I would be very happy if these instructions helped you to turn your hobby into a lifelong passion... Enjoy the process! Create your ultimate dream wardrobe! Wear your garments proudly for years to come!

If you have any questions, please contact us at info@vikisews.com — we are always there to help.



GAL PATTERN DESCRIPTION

Gal is a pair of loose-fitting, above-elbow gloves made of two layers of tulle.



IMPORTANT!

The contents of this pattern are copyright protected and belong exclusively to Vikisews. You may use Vikisews patterns for personal use. It is prohibited to share Vikisews patterns and instructions with third parties, as well as to publish patterns and instructions online for public access. **Non-compliance with the mentioned rules is a violation of the US copyright law and may result in civil liability and criminal prosecution.**

You may use Vikisews patterns for commercial use, to sew custom-made garments and/or create fashion collections, on the condition that the patterns are solely used in a manufacturing setting and are not further shared with individuals.

SUGGESTED FABRIC

- To sew these gloves, choose fabrics with the following properties:
- lightweight, pliable, soft, non-fraying, stretchy
 - the fiber content can include synthetics (polyester, polyester + nylon), natural fibers (silk) or artificial fibers (viscose)
 - the following fabrics are recommended: tulle, lightweight stretch lace, lightweight knit fabrics.

Attention! We do not recommend heavyweight fabrics or fabrics that fray easily (heavyweight knits, chiffon, organza).

The gloves in the photo are made of tulle. The fabric is lightweight, pliable, and soft. The fiber content is 100% polyester.

GLOVE LENGTH, MIDDLE FINGER LENGTH

Size	S	M	L	XL
Glove length, cm	80	82.7	85.4	88.1
Middle finger length, cm	9.2	9.7	10.2	10.7

Size	S	M	L	XL
Glove length, in	31 1/2	32 1/2	33 5/8	34 5/8
Middle finger length, in	3 5/8	3 7/8	4	4 1/4

FINISHED OPENING WIDTH, ALL SIZES

25.2 cm (9 7/8")

PATTERN PIECES LIST

1. From main fabric:

- glove — cut 2 on fold
- thumb — cut 4
- fourchette 1/2 — cut 4
- fourchette 2/3 — cut 4
- fourchette 3/4 — cut 4

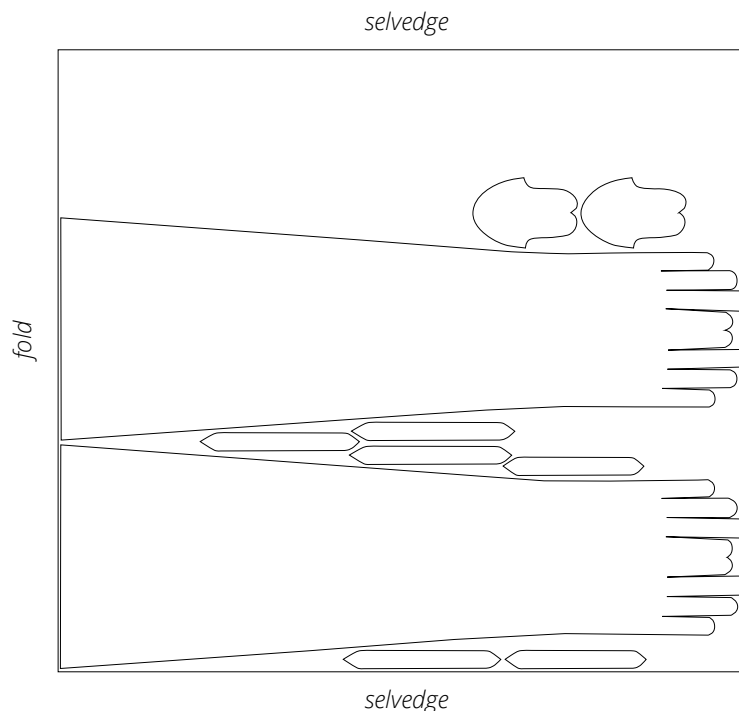
***IMPORTANT!** Don't forget to transfer all pattern markings and notches onto the fabric.*

SEAM ALLOWANCES

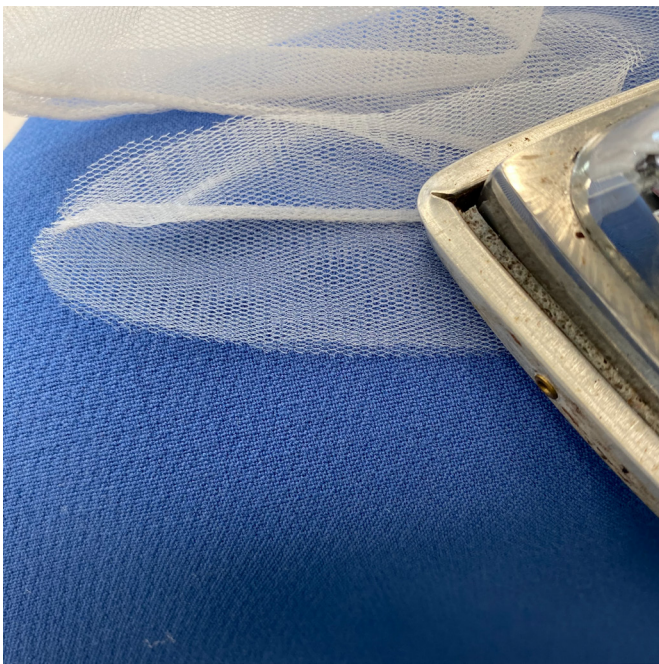
All pattern pieces include 3 mm (1/8") seam allowances. Take this into account when laying out pattern pieces on the fabric.

CUTTING LAYOUT

Main fabric, 140–300 cm (55–118") wide, cut on fold, for all sizes



READY? LET'S GET SEWING!



Press the seam flat. Press the seam allowances to any side.



If the seam allowance edge is uneven, true it.



Turn the glove piece wrong side out and position the seam right on the edge.
Pin.