

FROM THE FOUNDER OF THE #VIKISEWS BRAND

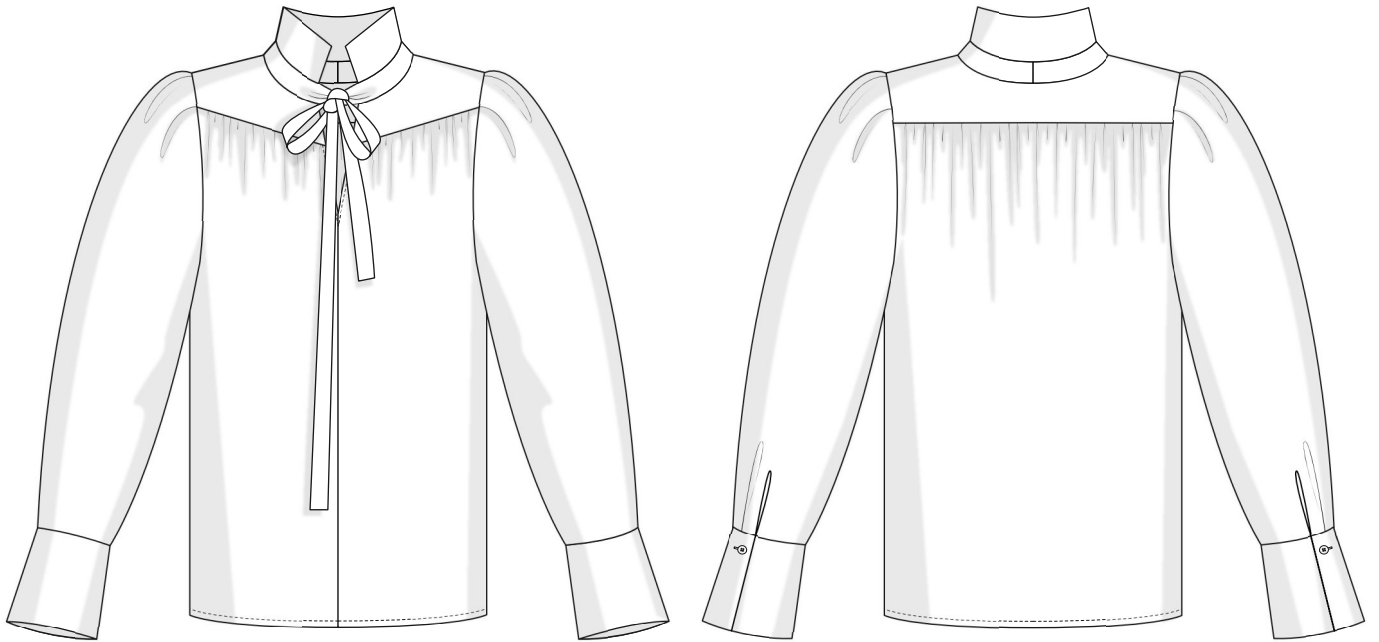


Back in 2016, when I was working on my first set of sewing instructions, I was trying to write them in such a way that even a complete beginner could easily understand and use them to create their very first garment. These instructions laid the foundation for the Vikisews brand, its vision and its mission. I wanted to create modern patterns with the utmost detailed and clear instructions.

Now, with each new collection we are constantly improving our instructions, amending them and adding more relevant details. By the time the final product reaches you, our drafters, correctors, and editors would have spent weeks perfecting every word and every photograph. If you compile a few of our instructions together, you will get a sewing manual that will assist you in sewing all kinds of garments at any difficulty level.

And I would be very happy if these instructions helped you to turn your hobby into a lifelong passion... Enjoy the process! Create your ultimate dream wardrobe! Wear your garments proudly for years to come!

If you have any questions, please contact us at info@vikisews.com — we are always there to help.



ALMA PATTERN DESCRIPTION

Alma is a semi-fitted blouse with a straight cut. The front and back have applied yokes and gathers at their upper edges. The blouse has a deep V-neckline and a collar with a separate collar stand which transitions into a tie. The long set-in sleeves are pleated at the caps and finished with cuffs. The cuff has a button and buttonhole closure. Alma is below-hip length.



IMPORTANT!

The contents of this pattern are copyright protected and belong exclusively to Vikisews. You may use Vikisews patterns for personal use. It is prohibited to share Vikisews patterns and instructions with third parties, as well as to publish patterns and instructions online for public access. **Non-compliance with the mentioned rules is a violation of the US copyright law and may result in civil liability and criminal prosecution.**

You may use Vikisews patterns for commercial use, to sew custom-made garments and/or create fashion collections, on the condition that the patterns are solely used in a manufacturing setting and are not further shared with individuals.

TOTAL EASE ALLOWANCE

	Bust ease	Waistline ease	Hipline ease	Upper arm ease
cm	44.4–43.9	56.7	22.2–21.7	10.2
inches	17 1/2–17 1/4	22 3/8	8 3/4–8 1/2	4

GARMENT LENGTH, SLEEVE LENGTH

Height, cm	Garment length, cm	Sleeve length including cuff width, cm
1 (154–160)	64.6	69.3–72
2 (162–168)	66.6	71.3–74
3 (170–176)	68.6	73.3–76
4 (178–184)	70.6	75.3–78

Height, ft	Garment length, in	Sleeve length including cuff width, in
1 (5'1"–5'3")	25 3/8	27 1/4–28 3/8
2 (5'4"–5'6")	26 1/4	28 1/8–29 1/8
3 (5'7"–5'9")	27	28 7/8–29 7/8
4 (5'10"–6'1")	27 3/4	29 5/8–30 3/4

SUGGESTED FABRIC

To sew this blouse, choose blouse and dress-weight fabrics with the following properties:

- lightweight, pliable, soft, non-stretch or low-stretch, sheer, semi-sheer or opaque
- the fiber content can include natural fibers (silk, cotton), artificial fibers (viscose), blends (cotton + silk, cotton + viscose, silk + viscose, etc.), and synthetics (polyester)
- the following fabrics are recommended: satin, dress-weight viscose, chiffon, natural or synthetic lightweight silk.

Attention! We do not recommend stretchy knit materials or structured fabrics (sateen, organza).

The blouse in the photo is made of artificial silk. The fabric is lightweight, fluid, soft, and with very little stretch. The fiber content is 100% polyester. The fabric weight is 235 g/m². The interfacing weight is 30 g/m².

TOOLS AND EQUIPMENT

- sewing machine for construction
- overlocker for finishing raw edges. This may be replaced with a stretch overlock stitch or a zigzag stitch on the sewing machine (overlock or zigzag stitch width 2–3 mm, stitch length 2.5 mm)
- buttonhole foot for the sewing machine
- stitch-in-the-ditch foot for the sewing machine (optional)
- latch hook. It can be replaced with a large-eye needle.
- bias tape maker
- hand-press tool and molds for button covering (optional).

PATTERN PIECES LIST

1. From main fabric:

- front — cut 2
- back — cut 1 on fold
- front yoke — cut 4
- back yoke — cut 2 on fold
- sleeve — cut 2
- sleeve hem binding — cut 2
- collar — cut 2 on fold
- collar stand + tie — cut 4
- cuff — cut 2
- sleeve head binding — cut 2.

2. From additional fabric:

- sleeve head — cut 2.

3. From interfacing:

- collar — cut 2 on fold
- cuff — cut 2.

Partially interface the collar stand area on the two collar stand + tie pieces. The interfacing area is marked on the pattern.

Additionally cut from interfacing:

- two strips of interfacing, 1.5 cm (5/8") wide, to reinforce the neckline seam allowances. The interfacing strips should be cut on the cross grain (perpendicular to the selvedge).
- two strips of interfacing to reinforce the slits on the sleeves. The strips should be 1 cm (3/8") wide and as long as the slit plus additional 4 mm (about 1/8"). The interfacing strips should be cut on the straight grain (parallel to the selvedge).
- strips of interfacing, 1.5 cm (5/8") wide, to reinforce the neckline seam allowances on the inner yoke pieces. The interfacing strips should be cut on the cross grain (perpendicular to the selvedge).

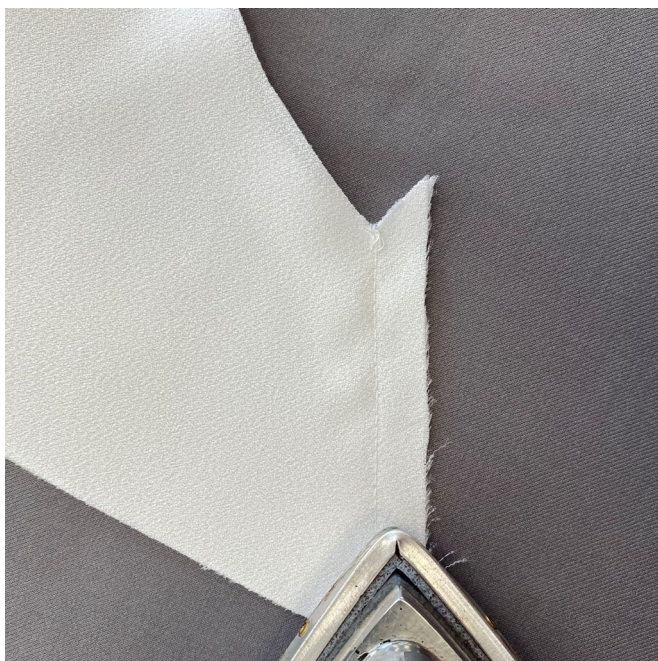
***IMPORTANT!** Don't forget to transfer all pattern markings and notches onto the fabric.*



Press the seam allowances open.



Place the pieced outer yoke right sides together with the pieced inner yoke, align the neckline and center front edges, and pin. Machine-stitch the front edges on both sides of the yoke, backstitching at the beginning and end of the seam.



Press the seam flat.