

FROM THE FOUNDER OF THE #VIKISEWS BRAND

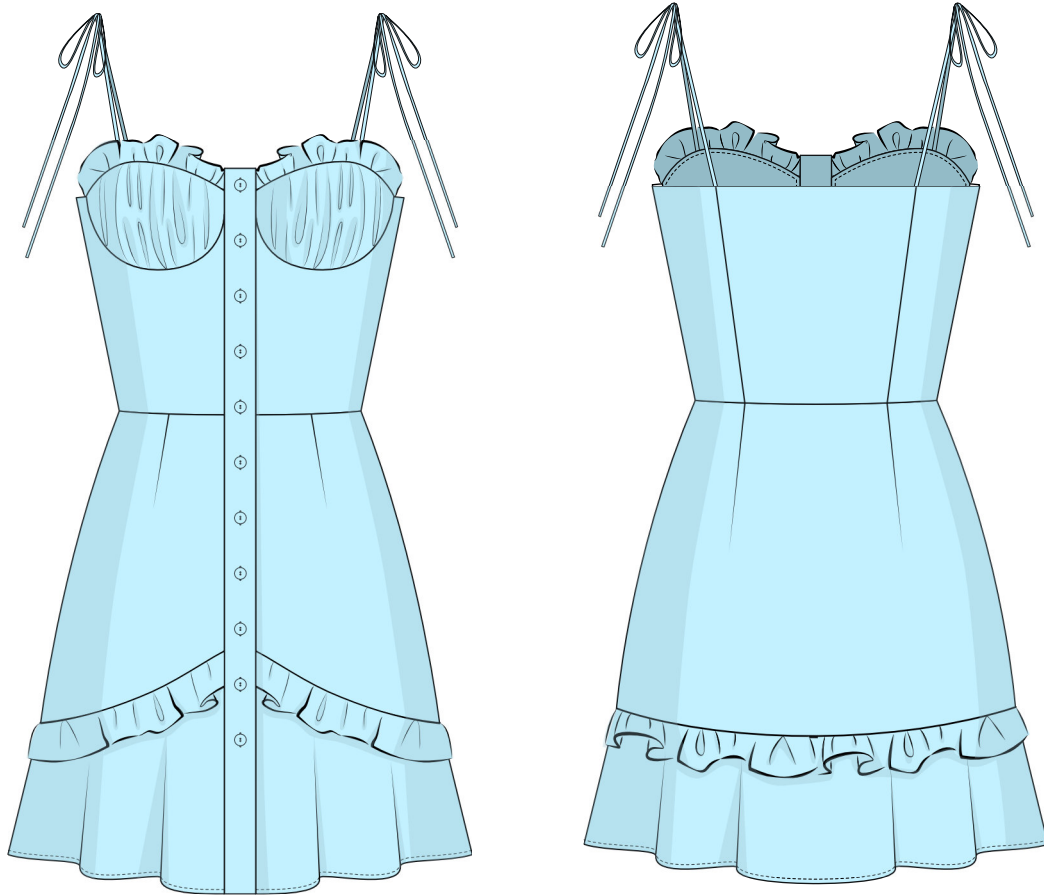


Back in 2016, when I was working on my first set of sewing instructions, I was trying to write them in such a way that even a complete beginner could easily understand and use them to create their very first garment. These instructions laid the foundation for the Vikisews brand, its vision and its mission. I wanted to create modern patterns with the utmost detailed and clear instructions.

Now, with each new collection we are constantly improving our instructions, amending them and adding more relevant details. By the time the final product reaches you, our drafters, correctors, and editors would have spent weeks perfecting every word and every photograph. If you compile a few of our instructions together, you will get a sewing manual that will assist you in sewing all kinds of garments at any difficulty level.

And I would be very happy if these instructions helped you to turn your hobby into a lifelong passion... Enjoy the process! Create your ultimate dream wardrobe! Wear your garments proudly for years to come!

If you have any questions, please contact us at info@vikisews.com — we are always there to help.



PARIS PATTERN DESCRIPTION

Paris is a close-fitting dress with a defined waist. It has a waist seam and a sweetheart neckline trimmed with a ruffle. The back bodice is shaped with princess seams that transition into waist darts on the skirt. The front skirt also has waist darts. The bodice features tie-up shoulder straps and separate bust cups with a draped overlay. The skirt features a ruffle and a flounce at the bottom. The dress has a center front placket and closes with buttons and buttonholes. Paris is above-knee length.



IMPORTANT!

The contents of this pattern are copyright protected and belong exclusively to Vikisews. You may use Vikisews patterns for personal use. It is prohibited to share Vikisews patterns and instructions with third parties, as well as to publish patterns and instructions online for public access. **Non-compliance with the mentioned rules is a violation of the US copyright law and may result in civil liability and criminal prosecution.**

You may use Vikisews patterns for commercial use, to sew custom-made garments and/or create fashion collections, on the condition that the patterns are solely used in a manufacturing setting and are not further shared with individuals.

TOTAL EASE ALLOWANCE

	Bust ease (estimated)	Waistline ease	Hipline ease
cm	0	4–4.5	4–4.7
inches	0	1 5/8–1 3/4	1 5/8–1 7/8

GARMENT LENGTH

Height, cm	Garment length from waist down including flounce, cm	Height, ft	Garment length from waist down including flounce, in
1 (154–160)	39.6	1 (5'1"–5'3")	15 5/8
2 (162–168)	42.6	2 (5'4"–5'6")	16 3/4
3 (170–176)	45.6	3 (5'7"–5'9")	18
4 (178–184)	48.6	4 (5'10"–6'1")	19 1/8

SUGGESTED FABRIC

To sew this dress, choose dress-weight fabrics with the following properties:

- medium-weight, pliable, opaque, non-stretch or low-stretch
- the fiber content can include natural fibers (cotton, linen), artificial fibers (viscose), and blends (cotton + elastane, linen + silk, cotton + viscose, etc.)
- the following fabrics are recommended: gauze, linen, poplin, sateen, cotton shirting.

Attention! We do not recommend heavyweight, structured fabrics.

The dress in the photos is made of gauze. The fabric is medium-weight, pliable, soft, with a little stretch. The fiber content is 100% cotton. The fabric weight is 125 g/m².

The interfacing weight is 30 g/m².

PATTERN PIECES LIST

1. From main fabric:

- front bodice – cut 2
- center back bodice – cut 1 on fold
- side back bodice – cut 2
- front skirt – cut 2
- back skirt – cut 1 on fold
- front skirt flounce – cut 2
- back skirt flounce – cut 1
- center cup – cut 2
- side cup – cut 2
- cup overlay – cut 2
- placket – cut 4
- back facing – cut 1 on fold
- front bodice ruffle – cut 2
- front skirt ruffle – cut 2
- back skirt ruffle – cut 1
- front strap – cut 2
- back strap – cut 2.

2. From interfacing:

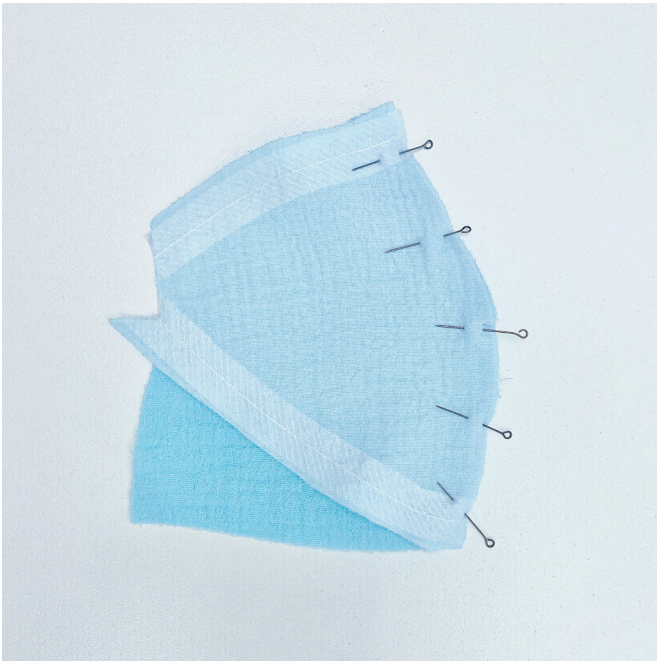
- center cup – cut 2
- side cup – cut 2
- placket – cut 4
- back facing – cut 1 on fold.

***IMPORTANT!** Don't forget to transfer all pattern markings and notches onto the fabric.*

SEAM ALLOWANCES

All pattern pieces include 1 cm (3/8") seam allowances.

Take this into account when laying out pattern pieces on the fabric.



Place the center cup and side cup pieces right sides together. Align the edges, match the notches, and pin. Stitch on the sewing machine, backstitching at the beginning and end of the seam.

Press the seam flat.



Clip into the curved sections of the seam allowances, stopping 1–2 mm short of the stitching line.



Press the seam allowances open.