

FROM THE FOUNDER OF THE #VIKISEWS BRAND

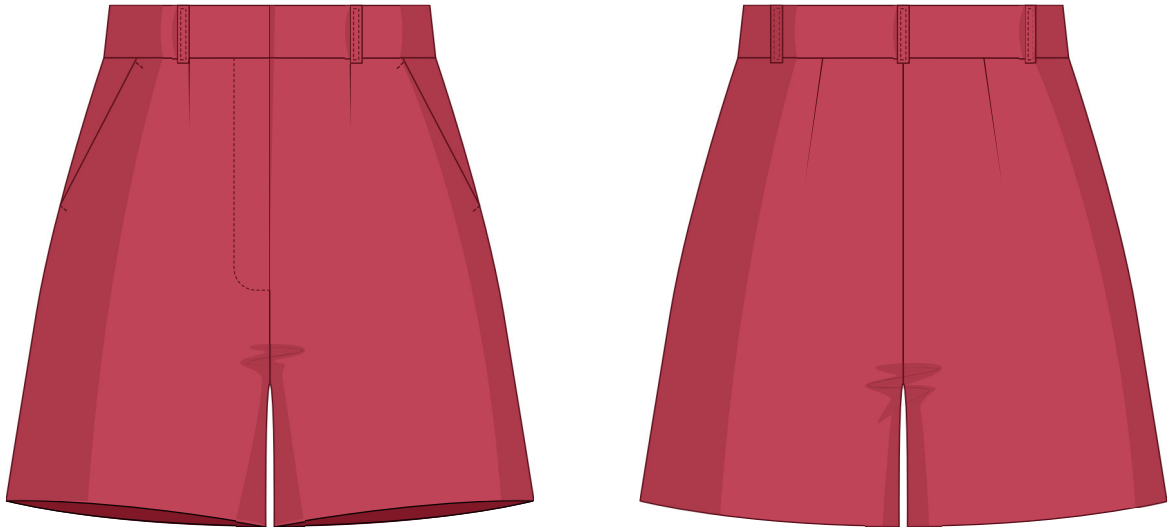


Back in 2016, when I was working on my first set of sewing instructions, I was trying to write them in such a way that even a complete beginner could easily understand and use them to create their very first garment. These instructions laid the foundation for the Vikisews brand, its vision and its mission. I wanted to create modern patterns with the utmost detailed and clear instructions.

Now, with each new collection we are constantly improving our instructions, amending them and adding more relevant details. By the time the final product reaches you, our drafters, correctors, and editors would have spent weeks perfecting every word and every photograph. If you compile a few of our instructions together, you will get a sewing manual that will assist you in sewing all kinds of garments at any difficulty level.

And I would be very happy if these instructions helped you to turn your hobby into a lifelong passion... Enjoy the process! Create your ultimate dream wardrobe! Wear your garments proudly for years to come!

If you have any questions, please contact us at info@vikisews.com — we are always there to help.



HEATHER PATTERN DESCRIPTION

Heather is a pair of straight-cut, semi-fitted shorts. The front and back are fitted with waist darts. The shorts have slash pockets and a fly front zipper closure. The waistband features topstitched belt loops and fastens with a sew-on hook and bar closure. The upper edge of the waistband sits at the natural waistline. Heather is above-knee length.



IMPORTANT!

The contents of this pattern are copyright protected and belong exclusively to Vikisews. You may use Vikisews patterns for personal use. It is prohibited to share Vikisews patterns and instructions with third parties, as well as to publish patterns and instructions online for public access. **Non-compliance with the mentioned rules is a violation of the US copyright law and may result in civil liability and criminal prosecution.**

You may use Vikisews patterns for commercial use, to sew custom-made garments and/or create fashion collections, on the condition that the patterns are solely used in a manufacturing setting and are not further shared with individuals.

TOTAL EASE ALLOWANCE

	Waistline ease	Hipline ease
cm	3.5–6.5	3.6–6.5
inches	1 3/8–2 1/2	1 3/8–2 1/2

GARMENT LENGTH

Height, cm	Side seam length including waistband, cm	Height, ft	Side seam length including waistband, in
1 (154–160)	37.6–40.7	1 (5'1"–5'3")	14 3/4–16
2 (162–168)	39.6–42.7	2 (5'4"–5'6")	15 5/8–16 3/4
3 (170–176)	41.6–44.6	3 (5'7"–5'9")	16 3/8–17 1/2
4 (178–184)	43.7–46.7	4 (5'10"–6'1")	17 1/4–18 3/8

FINISHED HEM WIDTH FOR ALL HEIGHTS

Size	34	36	38	40	42	44	46	48	50	52
cm	30.9	32.1	33.2	34.4	35.5	36.6	37.7	38.8	39.9	40.9
inches	12 1/8	12 5/8	13 1/8	13 1/2	14	14 3/8	14 7/8	15 1/4	15 3/4	16 1/8

SUGGESTED FABRIC

To sew these shorts, choose dress-weight fabrics with the following properties:

- medium weight, pliable, opaque, with a little elastane
- the fiber content can include natural fibers (wool, cotton, linen), blends (wool + polyester, cotton + elastane, etc.), and synthetics (polyester, polyester + elastane)
- the following fabrics are recommended: suiting, linen, heavyweight cotton, denim.

Attention! We do not recommend stretchy fabrics.

For the lining, choose lining fabrics made of artificial fibers (viscose), blends (viscose + elastane, viscose + polyester), or synthetics (polyester, polyester + elastane).

The shorts in the photo are made of suiting fabric. The fabric is medium weight, pliable and has very little stretch. The fiber content is a blend of wool and elastane. The fabric weight is 410 g/m².

The lining is 100% viscose. The weight of the lining fabric is 100 g/m².

TOOLS AND EQUIPMENT

- sewing machine for construction
- overlocker for finishing raw edges. It can be replaced with a stretch overlock stitch or a zigzag stitch on the sewing machine (overlock or zigzag stitch width 2–3 mm, stitch length 2.5 mm)
- one-sided foot for the sewing machine to attach the zipper.

PATTERN PIECES LIST

1. From main fabric:

- front leg — cut 2
- back leg — cut 2
- slash pocket — cut 2
- waistband — cut 1
- fly shield — cut 1
- belt loop — cut 1.

2. From lining fabric:

- pocket lining — cut 2.

***IMPORTANT!** Don't forget to transfer all pattern markings and notches onto the fabric.*

3. From interfacing:

- waistband — cut 1.

Also cut the following from interfacing: two 1.5 cm (5/8") wide strips to interface the pocket opening area on the front leg, one 1.5 cm (5/8") wide strip to interface the seam allowance for attaching the fly shield on the left front leg, one 3.5 cm (1 3/8") wide strip to interface the fly extension on the right front leg. The interfacing strips should be cut on the straight grain (parallel to the selvedge).

SEAM ALLOWANCES

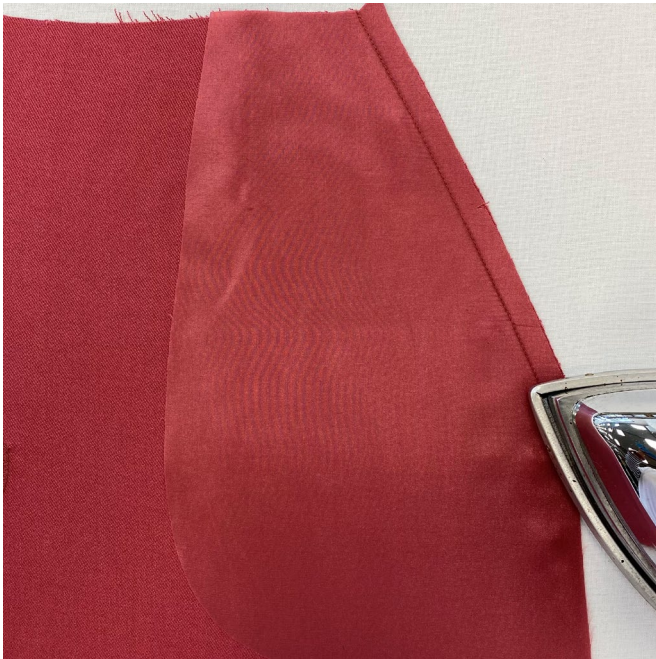
All pattern pieces include seam allowances as follows:

- garment hem allowance — 4 cm (1 5/8")
- pocket opening seam allowance — 1.5 cm (5/8")
- all other edges — 1 cm (3/8").

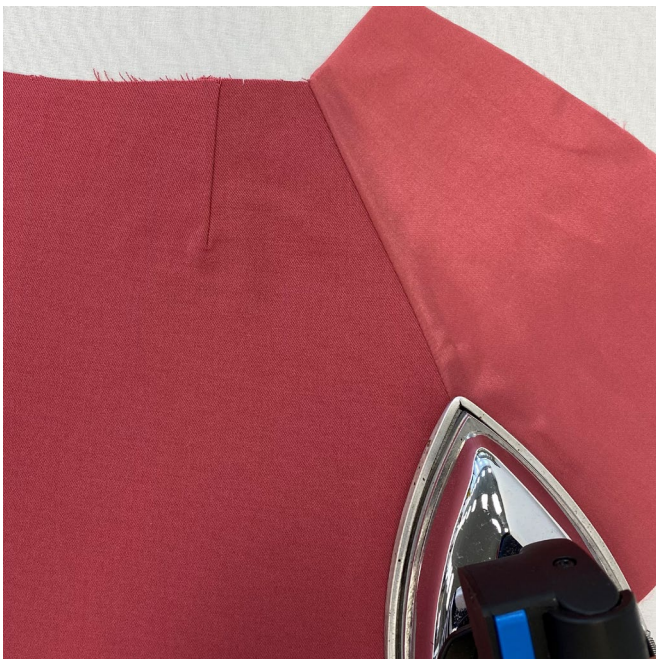
Take this into account when laying out pattern pieces on the fabric.



Place the pocket lining piece on top of the right front leg, right sides together. Align the pocket opening edges, match the notches and pin. Machine-stitch, backstitching at the beginning and end of the seam.



Press the seam flat.



Turn the pocket lining to the right side and press the seam allowances toward the lining.