

FROM THE FOUNDER OF THE #VIKISEWS BRAND

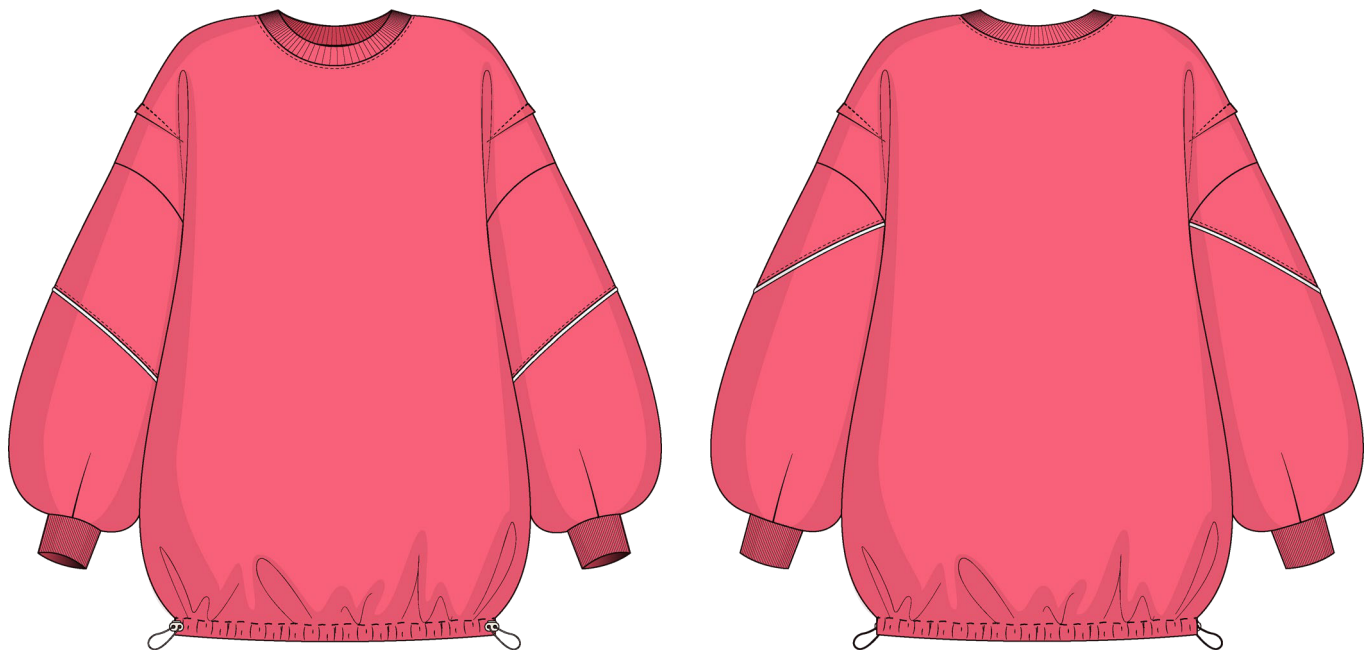


Back in 2016, when I was working on my first set of sewing instructions, I was trying to write them in such a way that even a complete beginner could easily understand and use them to create their very first garment. These instructions laid the foundation for the Vikisews brand, its vision and its mission. I wanted to create modern patterns with the utmost detailed and clear instructions.

Now, with each new collection we are constantly improving our instructions, amending them and adding more relevant details. By the time the final product reaches you, our drafters, correctors, and editors would have spent weeks perfecting every word and every photograph. If you compile a few of our instructions together, you will get a sewing manual that will assist you in sewing all kinds of garments at any difficulty level.

And I would be very happy if these instructions helped you to turn your hobby into a lifelong passion... Enjoy the process! Create your ultimate dream wardrobe! Wear your garments proudly for years to come!

If you have any questions, please contact us at info@vikisews.com — we are always there to help.



ROXY PATTERN DESCRIPTION

Roxy is an oversized sweatshirt with a straight silhouette. It features shoulder darts on the front and back, a round neckline finished with a ribbing neckband, and a widened shoulder line. The sleeves are full-length and oversized, and feature design lines finished with piping. The sleeves are finished with cuffs made of ribbing. The hem is finished with a casing with an elastic cord and toggle stoppers at the side seams to adjust the length. Roxy is below-hip length.



IMPORTANT!

The contents of this pattern are copyright protected and belong exclusively to Vikisews. You may use Vikisews patterns for personal use. It is prohibited to share Vikisews patterns and instructions with third parties, as well as to publish patterns and instructions online for public access. **Non-compliance with the mentioned rules is a violation of the US copyright law and may result in civil liability and criminal prosecution.**

You may use Vikisews patterns for commercial use, to sew custom-made garments and/or create fashion collections, on the condition that the patterns are solely used in a manufacturing setting and are not further shared with individuals.

TOTAL EASE ALLOWANCE

	Bust ease	Waistline ease	Hipline ease	Upper arm ease
cm	40–52	60.1–72.1	34.4–46.4	25.5 – 29.7
inches	15 3/4–20 1/2	23 5/8–28 3/8	13 1/2–18 1/4	10–11 3/4

GARMENT LENGTH, SLEEVE LENGTH

Height, cm	Garment length including neckband width, cm	Sleeve length including shoulder, neckband and cuff width, cm
1 (154–160)	68.2	75.1–76.6
2 (162–168)	71.2	77.1–78.6
3 (170–176)	74.2	79.1–80.6
4 (178–184)	77.2	81.1–82.6
Height, ft	Garment length including neckband width, in	Sleeve length including shoulder, neckband and cuff width, in
1 (5'1"–5'3")	26 7/8	29 5/8–30 1/8
2 (5'4"–5'6")	28	30 3/8–31
3 (5'7"–5'9")	29 1/4	31 1/8–31 3/4
4 (5'10"–6'1")	30 3/8	31 7/8–32 1/2

SUGGESTED FABRIC

To sew this sweatshirt, choose knit fabrics with the following properties:

- soft, breathable, non-stretch or with very little stretch, medium-weight
- the fiber content can include natural fibers (wool, cotton), artificial fibers (viscose), blends (wool + polyester, cotton + polyester, cotton + elastane, etc.), and synthetics (polyester, polyester + elastane)
- the following fabrics are recommended: heavyweight sweatshirt fleece

Attention! We do not recommend lightweight knit fabrics, jersey fabrics, French terry and lighter weight sweatshirting.

We recommend using rib knit fabric as an additional material for the cuffs and the neckband.

The garment in the photo is made of heavyweight sweatshirt fleece. The fabric is soft and low-stretch. The fiber content is a blend of viscose, polyester, and elastane. The cuffs and the neckband are made of rib knit fabric.

PATTERN PIECES LIST

1. From main fabric:

- front — cut 1 on fold
- back — cut 1 on fold
- top front sleeve — cut 2
- top back sleeve — cut 2
- bottom front sleeve — cut 2
- bottom back sleeve — cut 2

2. From additional fabric (ribbing):

- cuff — cut 2
- neckband — cut 1

3. From interfacing:

- 4 squares 2.5 x 2.5 cm (1x1") to interface the grommet placement areas on the front and back

IMPORTANT! Don't forget to transfer all pattern markings and notches onto the fabric.

SEAM ALLOWANCES

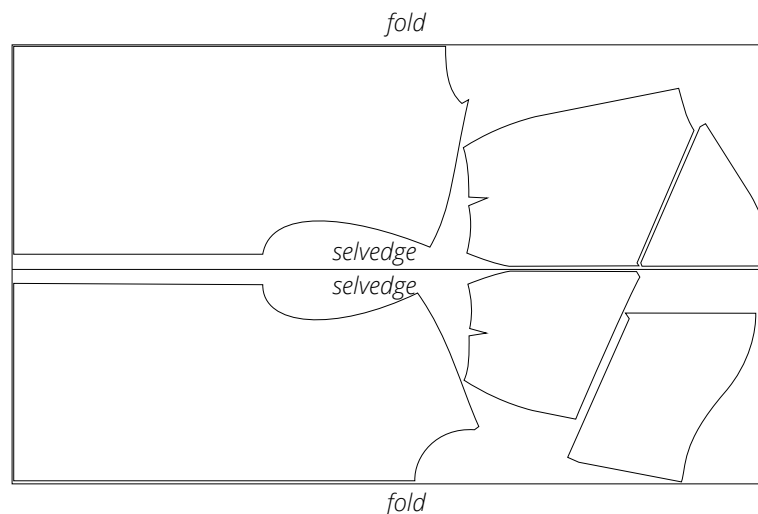
All pattern pieces include seam allowances as follows:

- garment hem allowance – 3.5 cm (1 3/8")
- all other edges — 1 cm (3/8")

Take this into account when laying out pattern pieces on the fabric.

CUTTING LAYOUT

Main fabric, 160 cm (63") wide, with a directional print, cut on a double fold, for sizes XS–S, M–L in all heights; main fabric, 180 cm (70") wide, with a directional print, cut on a double fold, for sizes M–L, XL in all heights





Important! In this garment, the shoulder edges are finished before the darts. To avoid unnecessary bulk, the shoulder edges and sleeve top seam edges are to be sewn together using stretch or zigzag stitch on the sewing machine, the stitch length is 2.5 mm, the stitch width is 0.8 mm, the seam allowances are to be pressed open.

With the right side facing up, finish the shoulder edges of the front and back on the overlocker.



Place the front and back right sides together, align the shoulder edges and pin.

Sew the shoulder edges together on the sewing machine using a stretch stitch, backstitching at the beginning and end.



Press the seam flat.