

FROM THE FOUNDER OF THE #VIKISEWS BRAND

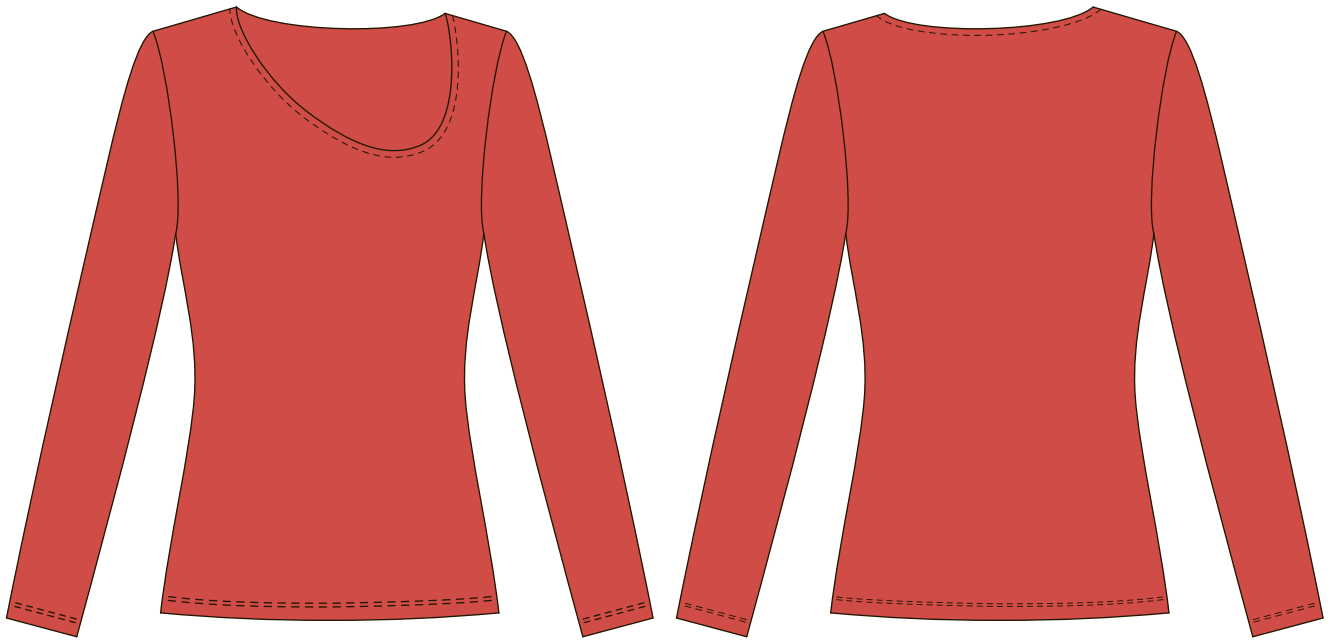


Back in 2016, when I was working on my first set of sewing instructions, I was trying to write them in such a way that even a complete beginner could easily understand and use them to create their very first garment. These instructions laid the foundation for the Vikisews brand, its vision and its mission. I wanted to create modern patterns with the utmost detailed and clear instructions.

Now, with each new collection we are constantly improving our instructions, amending them and adding more relevant details. By the time the final product reaches you, our drafters, correctors, and editors would have spent weeks perfecting every word and every photograph. If you compile a few of our instructions together, you will get a sewing manual that will assist you in sewing all kinds of garments at any difficulty level.

And I would be very happy if these instructions helped you to turn your hobby into a lifelong passion... Enjoy the process! Create your ultimate dream wardrobe! Wear your garments proudly for years to come!

If you have any questions, please contact us at info@vikisews.com – we are always there to help.



LAURA PATTERN DESCRIPTION

Laura is a close-fitting long sleeve top. It features long set-in sleeves and an asymmetrical neckline finished with binding. The long sleeve top is hip-length.



IMPORTANT!

The contents of this pattern are copyright protected and belong exclusively to Vikisews. You may use Vikisews patterns for personal use. It is prohibited to share Vikisews patterns and instructions with third parties, as well as to publish patterns and instructions online for public access. **Non-compliance with the mentioned rules is a violation of the US copyright law and may result in civil liability and criminal prosecution.**

You may use Vikisews patterns for commercial use, to sew custom-made garments and/or create fashion collections, on the condition that the patterns are solely used in a manufacturing setting and are not further shared with individuals.

TOTAL EASE ALLOWANCE

	Bust ease	Waistline ease	Hipline ease	Upper arm ease
cm	-10.6	1.8-1.9	-7.3:-7.6	-1.8
inches	-4 1/8	3/4	-2 7/8:-3	-3/4

GARMENT LENGTH, SLEEVE LENGTH

Height, cm	Back length, cm	Sleeve length, cm
1 (154-160)	55	56
2 (162-168)	58	58
3 (170-176)	61	60
4 (178-184)	64	62

Height, ft	Back length, in	Sleeve length, in
1 (5'1"-5'3")	21 5/8	22
2 (5'4"-5'6")	22 7/8	22 7/8
3 (5'7"-5'9")	24	23 5/8
4 (5'10"-6'1")	25 1/4	24 3/8

SUGGESTED FABRIC

To sew this top, choose knit fabrics with the following properties:

- medium weight, soft, breathable, stretchy
- the fiber content can include natural fibers (wool, cotton), artificial fibers (viscose), blends (wool + elastane, cotton + elastane, viscose + elastane), and synthetics (polyester, polyester + elastane)
- the following fabrics are recommended: lightweight stretchy sweater knits, ribbed knits, jersey knits, interlock knits, spandex, knit mesh fabric.

Attention! We do not recommend lightweight sheer fabrics (chiffon, organza).

PATTERN PIECES LIST

1. From main fabric:

- front — cut 1
- back — cut 1
- sleeve — cut 2
- neckline binding — cut 1

IMPORTANT! Don't forget to transfer all pattern markings and notches onto the fabric.

2. From interfacing:

- strips to interface the shoulder seam allowances on the front

To interface the seam allowances, cut strips of interfacing that are 1 cm (3/8") wide and as long as the shoulder seam edge (measure on the pattern). The interfacing strips should be cut on the straight grain (parallel to the selvedge).

You can also use premade 1 cm (3/8") wide straight-grain fusible stay tape.

SEAM ALLOWANCES

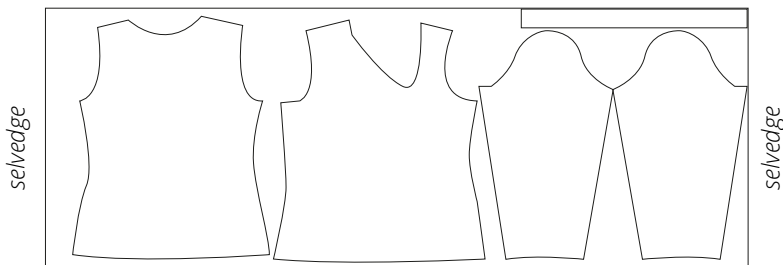
All pattern pieces include seam allowances as follows:

- garment hem allowance — 2 cm (3/4")
- sleeve hem allowance — 2 cm (3/4")
- all other edges — 1 cm (3/8")

Take this into account when laying out pattern pieces on the fabric.

CUTTING LAYOUT

Main fabric, 180 cm (70") wide, with a directional print/nap, cut on a single layer, for all sizes in all heights



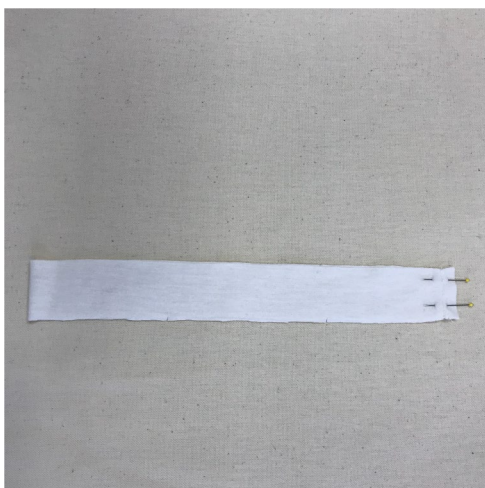


Insert the sleeves into the armholes, align the armhole and sleeve cap edges, match all the notches.

Pin the sleeves in place and hand-baste if necessary. Stitch the sleeves into the armholes on the overlocker. When stitching, keep the sleeve facing up.



First press the seam allowances flat and then press them towards the sleeves on a tailor's board. Shrink out the fullness if necessary.



Fold the neckline binding in half, right sides together. Machine-stitch along the short edge using a stretch needle. Backstitch at the beginning and end.