

FROM THE FOUNDER OF THE #VIKISEWS BRAND

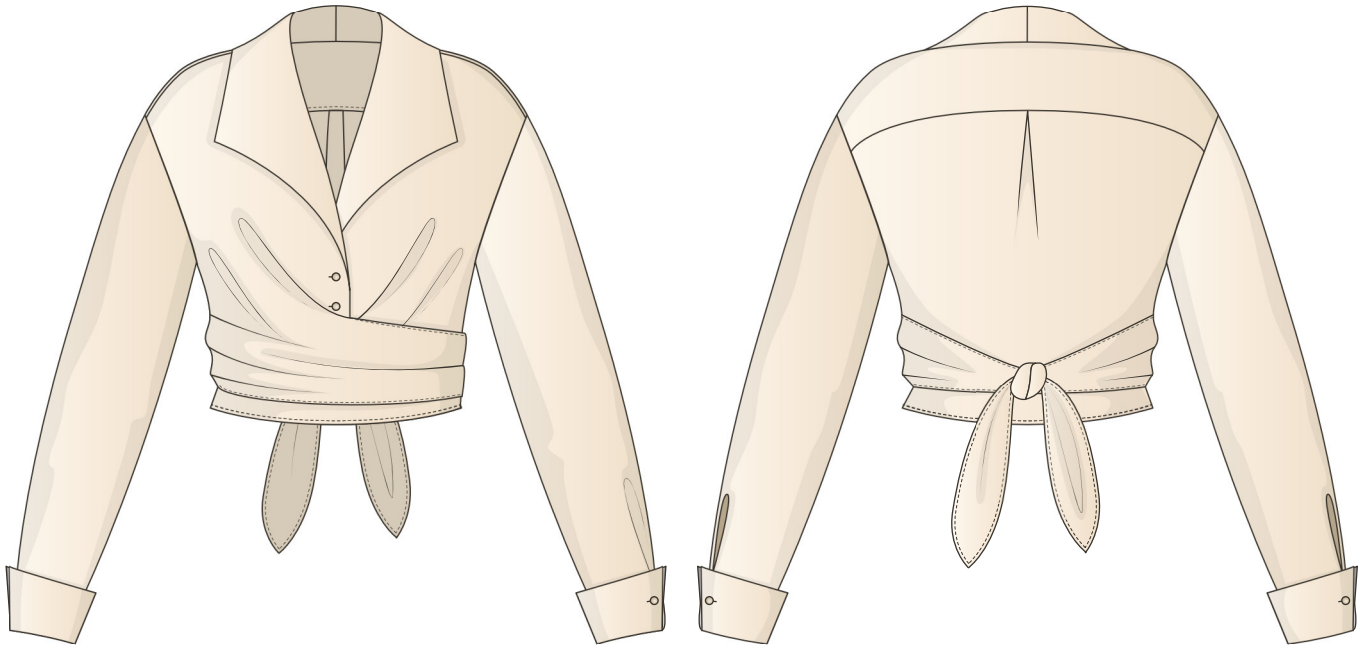


Back in 2016, when I was working on my first set of sewing instructions, I was trying to write them in such a way that even a complete beginner could easily understand and use them to create their very first garment. These instructions laid the foundation for the Vikisews brand, its vision and its mission. I wanted to create modern patterns with the utmost detailed and clear instructions.

Now, with each new collection we are constantly improving our instructions, amending them and adding more relevant details. By the time the final product reaches you, our drafters, correctors, and editors would have spent weeks perfecting every word and every photograph. If you compile a few of our instructions together, you will get a sewing manual that will assist you in sewing all kinds of garments at any difficulty level.

And I would be very happy if these instructions helped you to turn your hobby into a lifelong passion... Enjoy the process! Create your ultimate dream wardrobe! Wear your garments proudly for years to come!

If you have any questions, please contact us at info@vikisews.com — we are always there to help.



JOSLYN PATTERN DESCRIPTION

Joslyn is a semi-fitted blouse with a straight cut. The front has long grown-on ties, while the back features a double yoke and an inverted pleat. Joslyn has a grown-on wing collar. The shoulder seam has been moved towards the front by 1.5 cm (5/8"). The drop-shoulder, set-in, one-piece shirt sleeves are long and semi-fitted. At the bottom, each sleeve has pleats and a sleeve vent finished with a sleeve placket. The shaped double cuffs are designed for cufflinks. The blouse fastens with buttons and buttonholes. Joslyn is below-waist length.



IMPORTANT!

The contents of this pattern are copyright protected and belong exclusively to Vikisews. You may use Vikisews patterns for personal use. It is prohibited to share Vikisews patterns and instructions with third parties, as well as to publish patterns and instructions online for public access. **Non-compliance with the mentioned rules is a violation of the US copyright law and may result in civil liability and criminal prosecution.**

You may use Vikisews patterns for commercial use, to sew custom-made garments and/or create fashion collections, on the condition that the patterns are solely used in a manufacturing setting and are not further shared with individuals.

TOTAL EASE ALLOWANCE

	Bust ease	Waistline ease	Upper arm ease
cm	18.6–21.2	45.6–48.8	10
inches	7 3/8–8 3/8	18–19 1/4	3 7/8

GARMENT LENGTH, SLEEVE LENGTH

Height, cm	Garment length at center back, cm	Sleeve length including shoulder and cuff width, cm
1 (154–160)	49.9–50.1	80.7–83.5
2 (162–168)	50.5–52.5	81.6–85.5
3 (170–176)	52.5–53.7	82.5–86.2
4 (178–184)	54.1–54.3	84.4–87.2

Height, ft	Garment length at center back, in	Sleeve length including shoulder and cuff width, in
1 (5'1"–5'3")	19 5/8–19 3/4	31 3/4–32 7/8
2 (5'4"–5'6")	19 7/8–20 5/8	32 1/8–33 5/8
3 (5'7"–5'9")	20 5/8–21 1/8	32 1/2–33 7/8
4 (5'10"–6'1")	21 1/4–21 3/8	33 1/4–34 3/8

SUGGESTED FABRIC

To sew this blouse, choose dress-weight fabrics with the following properties:

- medium weight, with good drape, soft, non-stretch or with very little stretch, opaque
- the fiber content can include natural fibers (silk), artificial fibers (viscose), blends (silk + polyester, silk + viscose, etc.), and synthetics (polyester, polyester + elastane)
- the following fabrics are recommended: satin, crepe, dress-weight viscose, silk.

Attention! We do not recommend using stretchy knit fabrics.

The blouse in the photo is made of artificial silk. The fabric is medium weight, soft, non-stretch and with good drape. The fiber content is 100% polyester. The fabric weight is 235 gsm.

TOOLS AND EQUIPMENT

- sewing machine for construction
- overlocker for finishing raw edges. This may be replaced with a stretch overlock stitch or a zigzag stitch on the sewing machine (overlock or zigzag stitch width 2–3 mm, stitch length 2.5 mm)
- stitch-in-the-ditch foot for the sewing machine (optional)
- buttonhole foot

PATTERN PIECES LIST

1. From main fabric:

- back — cut 1 on fold
- front — cut 2
- back yoke — cut 2
- front facing — cut 2
- sleeve — cut 2
- cuff — cut 4
- sleeve placket binding — cut 2

***IMPORTANT!** Don't forget to transfer all pattern markings and notches onto the fabric.*

2. From interfacing:

- front facing — cut 2
- cuff — cut 4

Additionally, cut the following pieces from interfacing:

- 2 squares, 3×3 cm (1 1/8×1 1/8"), to reinforce the corners of the collar-to-neckline seam on the front.

SEAM ALLOWANCES

All pattern pieces include 1 cm (3/8") seam allowances.

Take this into account when laying out pattern pieces on the fabric.



With the right side facing up, overlock the side edges of the back piece.



On the wrong side of the back, create an inverted pleat, making its sides meet at the center, and baste by hand.



Place a back yoke piece right sides together with the back. Align the edges, match the notches, pin, and machine-stitch, backstitching at the beginning and end.