

# FROM THE FOUNDER OF THE #VIKISEWS BRAND

---



Back in 2016, when I was working on my first set of sewing instructions, I was trying to write them in such a way that even a complete beginner could easily understand and use them to create their very first garment. These instructions laid the foundation for the Vikisews brand, its vision and its mission. I wanted to create modern patterns with the utmost detailed and clear instructions.

Now, with each new collection we are constantly improving our instructions, amending them and adding more relevant details. By the time the final product reaches you, our drafters, correctors, and editors would have spent weeks perfecting every word and every photograph. If you compile a few of our instructions together, you will get a sewing manual that will assist you in sewing all kinds of garments at any difficulty level.

And I would be very happy if these instructions helped you to turn your hobby into a lifelong passion... Enjoy the process! Create your ultimate dream wardrobe! Wear your garments proudly for years to come!

If you have any questions, please contact us at [info@vikisews.com](mailto:info@vikisews.com) — we are always there to help.



## ALISON PATTERN DESCRIPTION

---

Alison is a close-fitting dress flared at the hem. The low round neckline is finished with bias binding featuring a raw edge. Sizes 42–52 include bust darts. The dress has long, close-fitting, one-piece, set-in sleeves that feature thumbholes and flare at the bottom. The hems of the sleeves are finished with bias binding featuring a raw edge. Alison is ankle-length.



## IMPORTANT!

---

The contents of this pattern are copyright protected and belong exclusively to Vikisews. You may use Vikisews patterns for personal use. It is prohibited to share Vikisews patterns and instructions with third parties, as well as to publish patterns and instructions online for public access. **Non-compliance with the mentioned rules is a violation of the US copyright law and may result in civil liability and criminal prosecution.**

You may use Vikisews patterns for commercial use, to sew custom-made garments and/or create fashion collections, on the condition that the patterns are solely used in a manufacturing setting and are not further shared with individuals.

# TOTAL EASE ALLOWANCE

|        | Bust ease | Waistline ease | Hipline ease | Upper arm ease |
|--------|-----------|----------------|--------------|----------------|
| cm     | -3        | 4-4.5          | 3-4          | -1             |
| inches | -1 1/8    | 1 5/8-1 3/4    | 1 1/8-1 5/8  | -3/8           |

# GARMENT LENGTH

| Height, cm  | Sizes |       | Height, ft     | Sizes  |        |
|-------------|-------|-------|----------------|--------|--------|
|             | 36-40 | 42-52 |                | 36-40  | 42-52  |
| 1 (154-160) | 120.7 | 121.1 | 1 (5'1"-5'3")  | 47 1/2 | 47 5/8 |
| 2 (162-168) | 125.7 | 126.1 | 2 (5'4"-5'6")  | 49 1/2 | 49 5/8 |
| 3 (170-176) | 130.7 | 131.1 | 3 (5'7"-5'9")  | 51 1/2 | 51 5/8 |
| 4 (178-184) | 135.7 | 136.1 | 4 (5'10"-6'1") | 53 3/8 | 53 5/8 |

# SLEEVE LENGTH

| Height, cm  | Sleeve length, cm | Height, ft     | Sleeve length, in |
|-------------|-------------------|----------------|-------------------|
| 1 (154-160) | 67.7-69.5         | 1 (5'1"-5'3")  | 26 5/8-27 3/8     |
| 2 (162-168) | 69.7-71.5         | 2 (5'4"-5'6")  | 27 1/2-28 1/8     |
| 3 (170-176) | 71.7-73.5         | 3 (5'7"-5'9")  | 28 1/4-28 7/8     |
| 4 (178-184) | 73.7-75.5         | 4 (5'10"-6'1") | 29-29 3/4         |

# SUGGESTED FABRIC

- To sew this dress, choose knit fabrics with the following properties:
- soft, stretchy, elastic, medium weight
  - the fiber content should include elastane and spandex and can also include natural fibers (wool, cotton), artificial fibers (viscose), blends (wool + polyester, cotton + polyester, cotton + elastane, etc.), and synthetics (polyester)
  - the following fabrics are recommended: sweater knits, rib knits, jersey fabrics

**Attention!** We recommend using only stretchy fabrics for this dress.

The dress in the photo is made of sweater knit. The fabric is medium weight, pliable, soft and medium stretch.

The fiber content is a blend of 10% viscose, 80% acrylic, and 10% spandex. The fabric weight is 330 g/m2.

# TOOLS AND EQUIPMENT

---

- sewing machine for construction
- overlocker for construction and finishing raw edges. It can be replaced with a stretch overlock stitch or a zigzag stitch on the sewing machine (overlock or zigzag stitch width 2–3 mm, stitch length 2.5 mm)
- coverstitch or coverlock machine for finishing the garment hem. It can be replaced with a twin needle on a regular sewing machine that can do a zigzag stitch
- latch hook. It can be replaced with a large-eye needle

***IMPORTANT!** We recommend using specialty needles when working with knit fabrics (for example, STRETCH, SUPER STRETCH, JERSEY, etc.). When sewing, a ball-shaped needle point pushes the knit loops apart without piercing the threads.*

## PATTERN PIECES LIST

---

### 1. From main fabric:

- front — cut 1 on fold
- back — cut 1 on fold
- sleeve — cut 2
- neck binding — cut 1
- sleeve hem binding — cut 2

***IMPORTANT!** Don't forget to transfer all pattern markings and notches onto the fabric.*

## SEAM ALLOWANCES

---

All pattern pieces include seam allowances as follows:

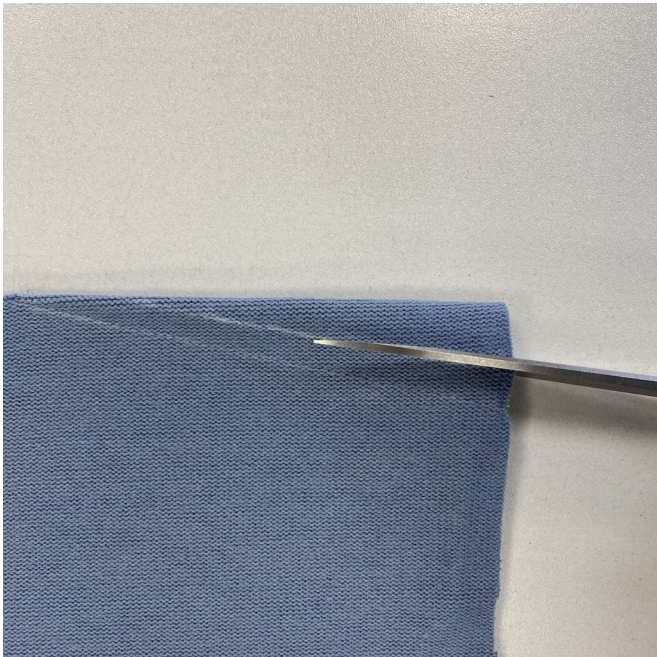
- garment hem allowance — 2 cm (3/4")
- all other edges — 1 cm (3/8")

Take this into account when laying out pattern pieces on the fabric.





Tie the thread tails at the dart point into a knot and hide them inside the dart bulk using a needle.



Mark a line at 1 cm (3/8") from the dart seam on the front piece.

Trim the extra dart width.



Overlock the seam allowances, keeping the underside of the dart facing up.

Tie the overlocker thread tails into a knot and hide them inside the dart bulk.