

FROM THE FOUNDER OF THE #VIKISEWS BRAND

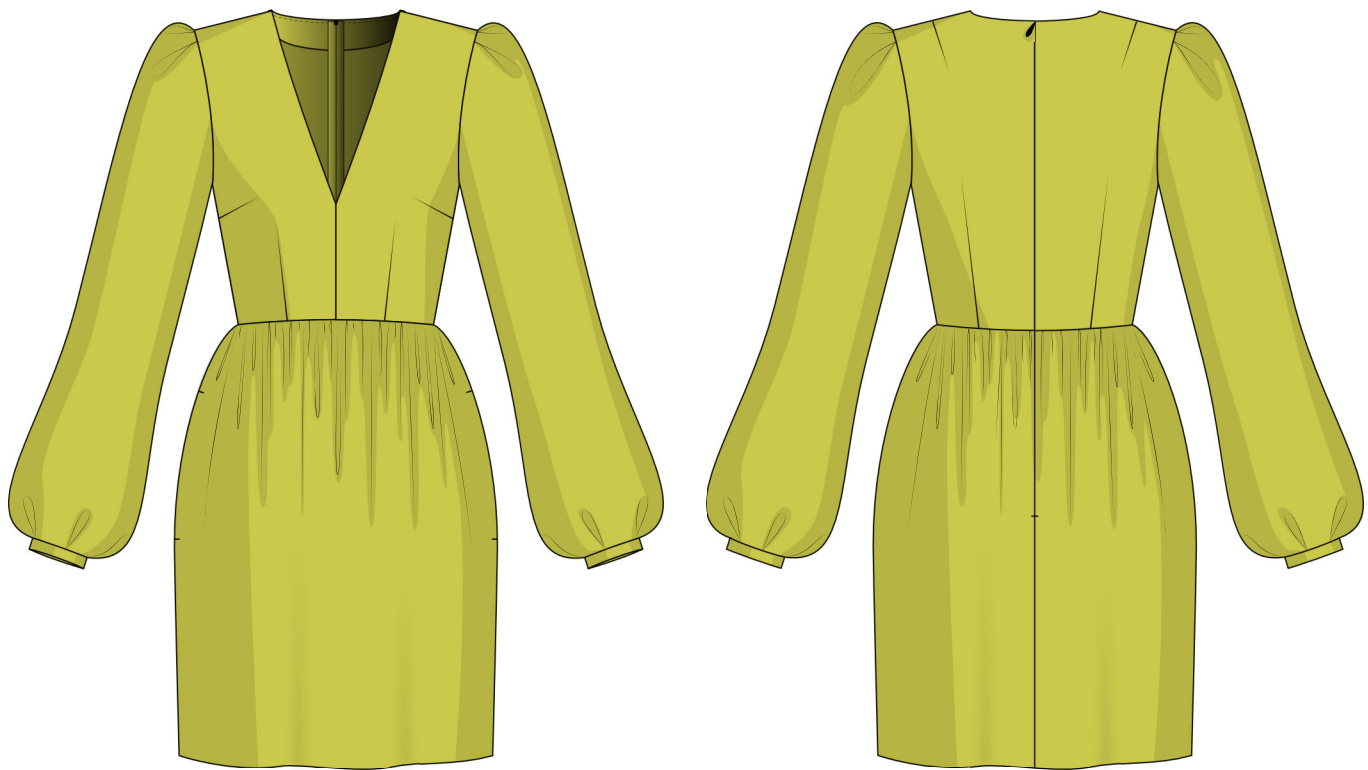


Back in 2016, when I was working on my first set of sewing instructions, I was trying to write them in such a way that even a complete beginner could easily understand and use them to create their very first garment. These instructions laid the foundation for the Vikisews brand, its vision and its mission. I wanted to create modern patterns with the utmost detailed and clear instructions.

Now, with each new collection we are constantly improving our instructions, amending them and adding more relevant details. By the time the final product reaches you, our drafters, correctors, and editors would have spent weeks perfecting every word and every photograph. If you compile a few of our instructions together, you will get a sewing manual that will assist you in sewing all kinds of garments at any difficulty level.

And I would be very happy if these instructions helped you to turn your hobby into a lifelong passion... Enjoy the process! Create your ultimate dream wardrobe! Wear your garments proudly for years to come!

If you have any questions, please contact us at info@vikisews.com — we are always there to help.



VIOLET PATTERN DESCRIPTION

Violet is a dress with a close-fitting bodice and a voluminous skirt. It features a waist seam that sits above the natural waistline. The front bodice features a center seam as well as bust and waist darts. The back bodice features shoulder and waist darts. The dress fastens with an invisible zipper in the center back seam. The skirt is gathered at the waist and features side seam pockets. The dress has a deep V-neckline and long set-in sleeves that are pleated at the caps and hems and finished with narrow cuffs. The front and back of the dress are finished with a free-hanging lining while the sleeves are unlined. Violet is above-knee length.



IMPORTANT!

The contents of this pattern are copyright protected and belong exclusively to Vikisews. You may use Vikisews patterns for personal use. It is prohibited to share Vikisews patterns and instructions with third parties, as well as to publish patterns and instructions online for public access. **Non-compliance with the mentioned rules is a violation of the US copyright law and may result in civil liability and criminal prosecution.**

You may use Vikisews patterns for commercial use, to sew custom-made garments and/or create fashion collections, on the condition that the patterns are solely used in a manufacturing setting and are not further shared with individuals.

TOTAL EASE ALLOWANCE

	Bust ease	Design line ease (3 cm [1 1/8"] above the waistline)	Hipline ease	Upper arm ease
cm	0.2–1.8	3.1–6.4	38.1–41.1	10.4–14
inches	1/8–3/4	1 1/4–2 1/2	15–16 1/8	4 1/8–5 1/2

GARMENT LENGTH, SLEEVE LENGTH

Height, cm	Back length from waist down (estimated), cm	Sleeve length including cuff, cm
1 (154–160)	43	65.1–67.4
2 (162–168)	46	66.8–68.8
3 (170–176)	49	68.5–70.5
4 (178–184)	52	70.3–72.2
Height, ft	Back length from waist down (estimated), in	Sleeve length including cuff, in
1 (5'1"–5'3")	16 7/8	25 5/8–26 1/2
2 (5'4"–5'6")	18 1/8	26 1/4–27 1/8
3 (5'7"–5'9")	19 1/4	27–27 3/4
4 (5'10"–6'1")	20 1/2	27 5/8–28 3/8

SUGGESTED FABRIC

To sew this dress, choose dress-weight fabrics with the following properties:

- medium weight, with good drape, soft, non-stretch or with very little stretch, opaque
- the fiber content can include natural fibers (wool, silk, cotton, linen), artificial fibers (viscose), blends (wool + silk, wool + polyester, cotton + viscose, etc.), and synthetics (polyester, polyester + elastane)
- the following fabrics are recommended: dress-weight wool, gabardine, suiting, velvet, dress-weight fine wale corduroy, modal

Attention! We do not recommend stretchy (lightweight knits) and lightweight fabrics (chiffon, stretch lace, challis).

For the lining, we recommend artificial fibers (viscose), blends (viscose + elastane, viscose + polyester), or synthetics (polyester, polyester + elastane).

The dress in the photo is made of suiting fabric. The fabric is medium weight, soft, with good drape and very little stretch. The fiber content is a blend of polyester, viscose, and spandex.

The lining is a blend of viscose and polyester.

PATTERN PIECES LIST

1. From main fabric:

- front bodice — cut 2
- front skirt — cut 1 on fold
- back bodice — cut 2
- back skirt — cut 2
- sleeve — cut 2
- cuff — cut 2
- back facing — cut 2
- front facing — cut 1

2. From lining fabric:

- front lining — cut 1 on fold
- back lining — cut 2
- pocket bag — cut 4

3. From interfacing:

- cuff — cut 2
- front facing — cut 1 on fold
- back facing — cut 2

IMPORTANT! Don't forget to transfer all pattern markings and notches onto the fabric.

Additionally, cut the following pieces from interfacing:

two strips, 2 cm (3/4") wide, to interface the zipper section of the center back seam allowances on the following pieces:

- back bodice — 2 pieces
- back skirt — 2 pieces

two strips to interface the grown-on pocket facing on the following pieces:

- front skirt — 1 piece on fold
- back skirt — 2 pieces

The interfacing strips should be cut on the straight grain (parallel to the selvedge).

SEAM ALLOWANCES

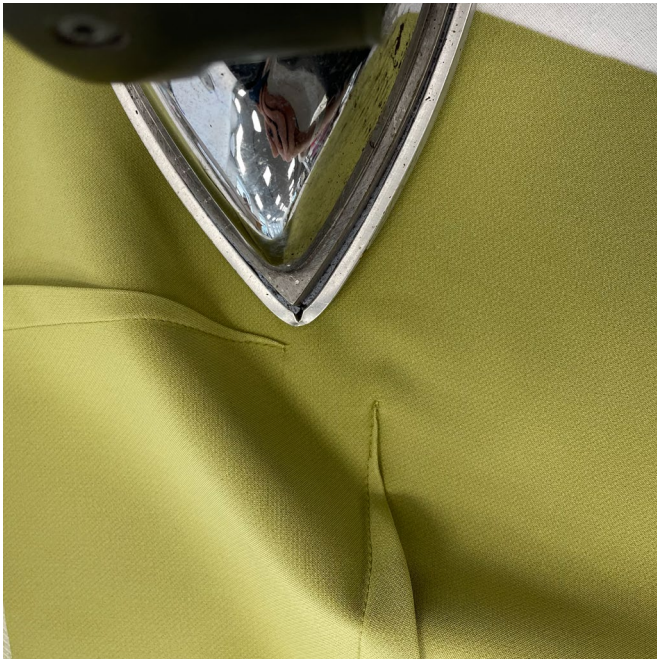
All pattern pieces include seam allowances as follows:

- garment hem allowance — 3 cm (1 1/8")
- center back seam allowances on the back bodice and back skirt pieces — 1.5 cm (5/8")
- all other edges — 1 cm (3/8")

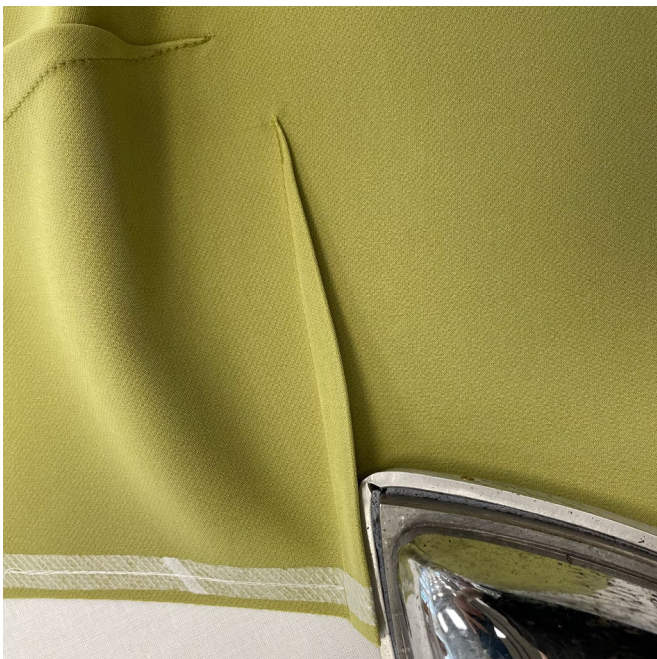
Take this into account when laying out pattern pieces on the fabric.



Press the bust dart towards the armhole.
Press the waist and shoulder darts towards the center.



Press and steam to shrink out the fullness at the dart points.



Press underneath the seam allowances to remove the imprints visible from the right side.