

# FROM THE FOUNDER OF THE #VIKISEWS BRAND

---



Back in 2016, when I was working on my first set of sewing instructions, I was trying to write them in such a way that even a complete beginner could easily understand and use them to create their very first garment. These instructions laid the foundation for the Vikisews brand, its vision and its mission. I wanted to create modern patterns with the utmost detailed and clear instructions.

Now, with each new collection we are constantly improving our instructions, amending them and adding more relevant details. By the time the final product reaches you, our drafters, correctors, and editors would have spent weeks perfecting every word and every photograph. If you compile a few of our instructions together, you will get a sewing manual that will assist you in sewing all kinds of garments at any difficulty level.

And I would be very happy if these instructions helped you to turn your hobby into a lifelong passion... Enjoy the process! Create your ultimate dream wardrobe! Wear your garments proudly for years to come!

If you have any questions, please contact us at [info@vikisews.com](mailto:info@vikisews.com) — we are always there to help.



## YUKI PATTERN DESCRIPTION

---

Yuki is a voluminous puffer tote bag featuring a lining and one zipper pocket on the inside.



## IMPORTANT!

---

The contents of this pattern are copyright protected and belong exclusively to Vikisews. You may use Vikisews patterns for personal use. It is prohibited to share Vikisews patterns and instructions with third parties, as well as to publish patterns and instructions online for public access. **Non-compliance with the mentioned rules is a violation of the US copyright law and may result in civil liability and criminal prosecution.**

You may use Vikisews patterns for commercial use, to sew custom-made garments and/or create fashion collections, on the condition that the patterns are solely used in a manufacturing setting and are not further shared with individuals.

# BAG DIMENSIONS

	Bag bottom width	Bag height	Bag bottom length	Handle length
cm	18	42	45	58
inches	7 1/8	16 1/2	17 3/4	22 7/8

## SUGGESTED FABRIC

To sew this bag, choose outerwear fabrics with the following properties:

- lightweight or medium-weight, non-stretch or with very little stretch, windproof and water-resistant
- the fiber content can include natural fibers (cotton), artificial fibers (viscose), blends (cotton + polyester, etc.), and synthetics (polyester)
- the following fabrics are recommended: outerwear fabrics, dewspo.

For the lining, choose lining fabrics made of artificial fibers (viscose), blends (viscose + elastane, viscose + polyester), or synthetics (polyester, polyester + elastane).

For the insulation, use alpolux.

For the interlining, use spunbond 30 g/m<sup>2</sup>. This material is also known as "agrotex" and can additionally be found in gardening or hardware stores.

**Important!** We do not recommend heavyweight, thick or stretchy fabrics.

The bag in the photo is made of outerwear fabric. The fabric is lightweight, low-stretch, and water-resistant. The fiber content is 100% polyester. The fabric weight is 95 g/m<sup>2</sup>.

The lining is a blend of polyester (55%) and viscose (45%). The fabric weight is 100 g/m<sup>2</sup>.

The insulation is alpolux 200 (artificial fibers).

#### 4. From interfacing:

- pocket facing — cut 1

#### 5. From insulation:

- handle — cut 2
- zipper panel — cut 1 (divided into 2 layers)

**Attention!** To pad the front/back panel, gussets and bottom of the bag, tear the insulation into small pieces and fill every section, achieving the same volume each time. The amount of insulation depends on the volume you want to achieve, but make sure you can still sew the openings closed after filling the bag pieces.

## SEAM ALLOWANCES

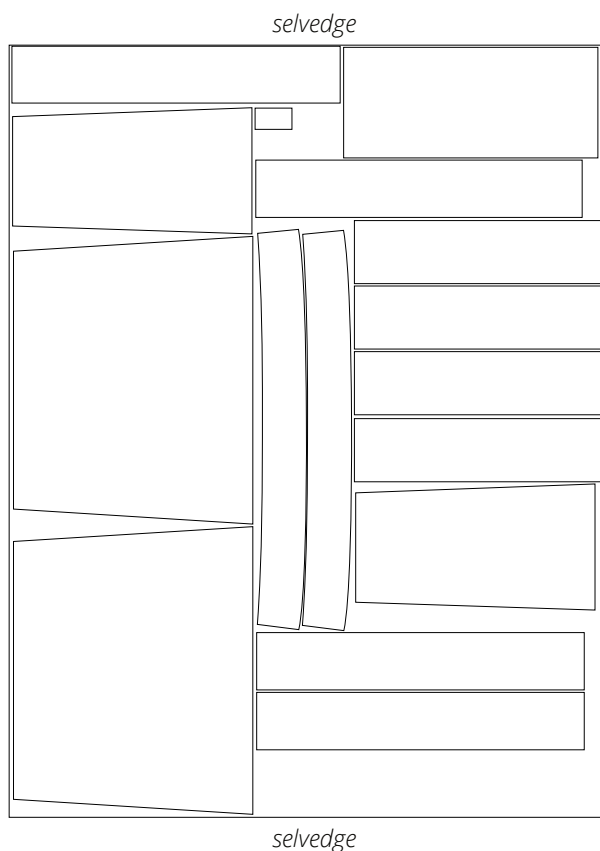
All pattern pieces include the seam allowances as follows:

- all edges — 1 cm (3/8").

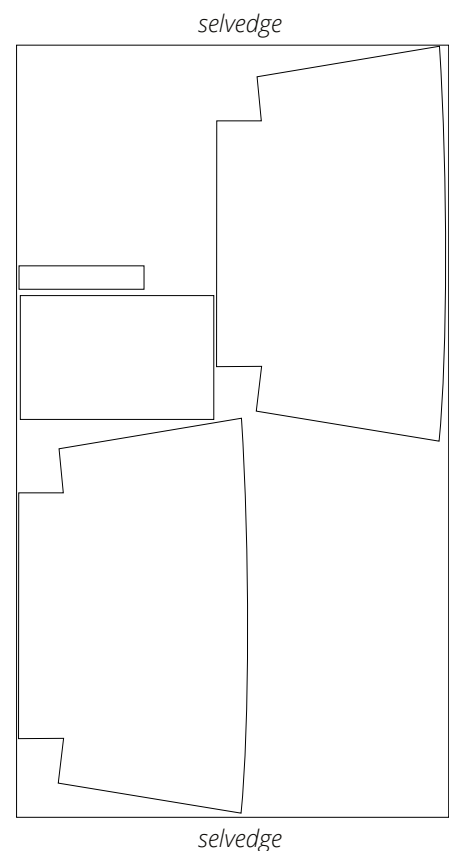
Take this into account when laying out the pattern pieces on the fabric.

## CUTTING LAYOUT

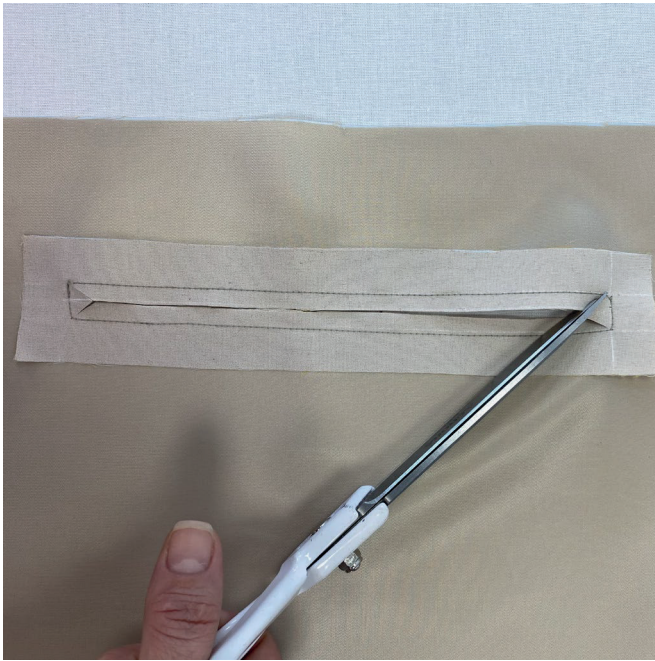
Main fabric, 140 cm (55") wide, with a directional print/nap, cut on a single layer



Lining fabric, 140 cm (55") wide, with a directional print, cut on a single layer



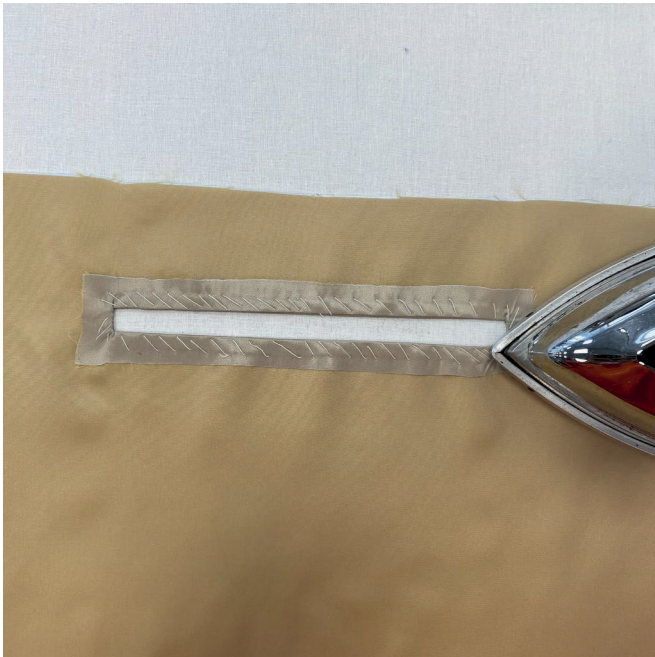




Stitch all along the perimeter of the pocket box, following the marked lines. Backstitch at the end. Press.

Mark the pocket opening.

Cut the pocket open along the marked lines. Precision is very important when slashing a pocket. When cutting diagonally into the corners, stop 1 mm away from the stitching line.



Push the pocket facing through to the wrong side. Hand-baste all the edges of the pocket opening with diagonal stitches, making sure the seam is right on the edge.



Press and steam the zipper tape before attaching it to prevent shrinkage in the finished bag.

Place the right side of the zipper tape to the wrong side of the pocket opening. Measure the required zipper length.