

FROM THE FOUNDER OF THE #VIKISEWS BRAND

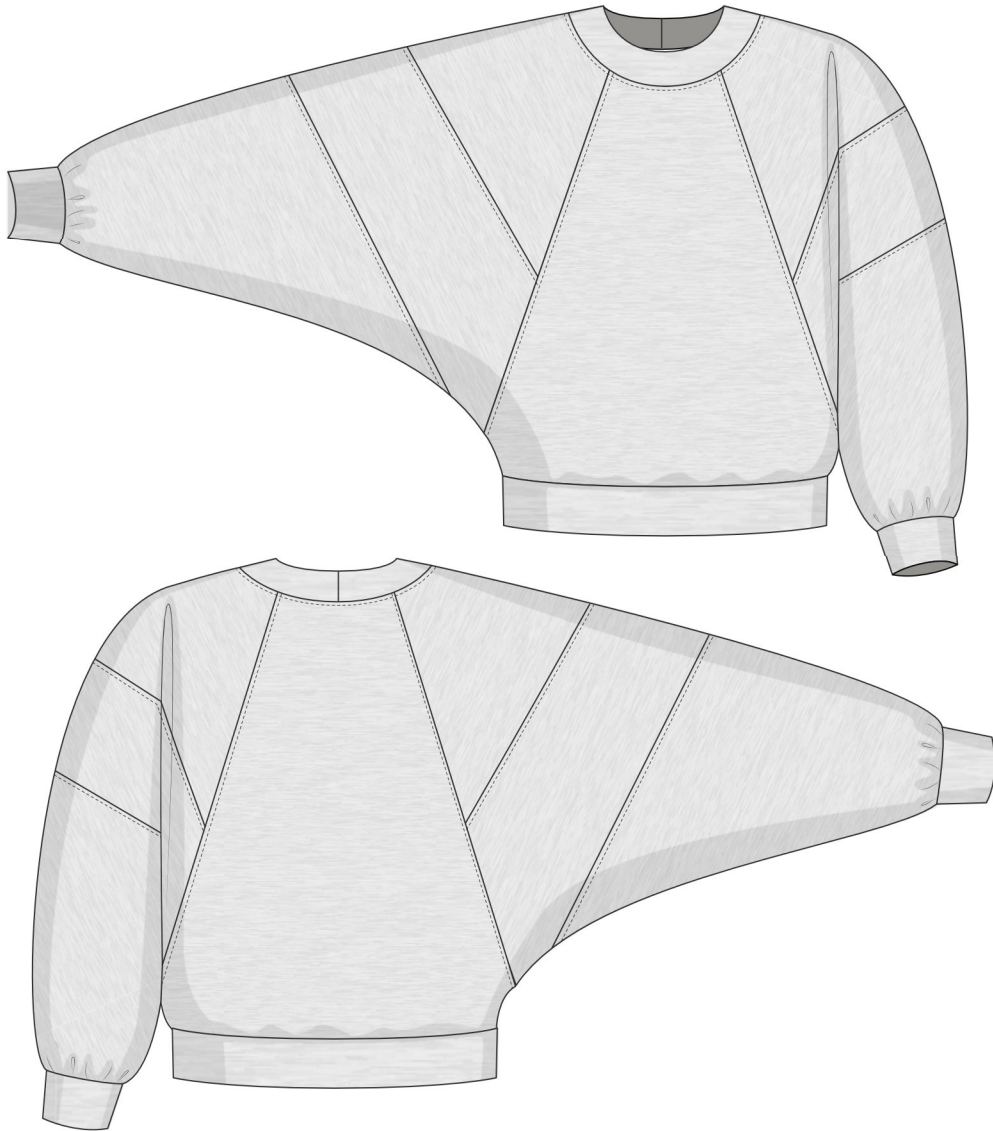


Back in 2016, when I was working on my first set of sewing instructions, I was trying to write them in such a way that even a complete beginner could easily understand and use them to create their very first garment. These instructions laid the foundation for the Vikisews brand, its vision and its mission. I wanted to create modern patterns with the utmost detailed and clear instructions.

Now, with each new collection we are constantly improving our instructions, amending them and adding more relevant details. By the time the final product reaches you, our drafters, correctors, and editors would have spent weeks perfecting every word and every photograph. If you compile a few of our instructions together, you will get a sewing manual that will assist you in sewing all kinds of garments at any difficulty level.

And I would be very happy if these instructions helped you to turn your hobby into a lifelong passion... Enjoy the process! Create your ultimate dream wardrobe! Wear your garments proudly for years to come!

If you have any questions, please contact us at info@vikisews.com — we are always there to help.



NUALA PATTERN DESCRIPTION

Nuala is a loose-fitting sweatshirt. It has shaped front and back and a round neckline finished with a ribbing neckband. The grown-on faux raglan sleeves are long, oversized, and feature decorative panels. The cuffs and waistband are made of ribbing. Nuala is above-hip length.



IMPORTANT!

The contents of this pattern are copyright protected and belong exclusively to Vikisews. You may use Vikisews patterns for personal use. It is prohibited to share Vikisews patterns and instructions with third parties, as well as to publish patterns and instructions online for public access. **Non-compliance with the mentioned rules is a violation of the US copyright law and may result in civil liability and criminal prosecution.**

You may use Vikisews patterns for commercial use, to sew custom-made garments and/or create fashion collections, on the condition that the patterns are solely used in a manufacturing setting and are not further shared with individuals.

TOTAL EASE ALLOWANCE

	Bust ease (estimated)	Waistline ease (estimated)	Upper arm ease (estimated)
cm	21–25.4	38.8–44.7	40.2–45.4
inches	8 1/4–10	15 1/4–17 5/8	15 7/8–17 7/8

GARMENT LENGTH, SLEEVE LENGTH

Height, cm	Back length including neckband and waistband, cm	Sleeve length including neckband, shoulder width, and cuff, cm
1 (154–160)	51–52.6	69.9–72.4
2 (162–168)	53.5–55.6	71.9–74.4
3 (170–176)	56.5–58.6	74.5–76.4
4 (178–184)	59.5–61.6	75.9–78.4
Height, ft	Back length including neckband and waistband, in	Sleeve length including neckband, shoulder width, and cuff, in
1 (5'1"–5'3")	20 1/8–20 3/4	27 1/2–28 1/2
2 (5'4"–5'6")	21 1/8–21 7/8	28 1/4–29 1/4
3 (5'7"–5'9")	22 1/4–23 1/8	29 3/8–30 1/8
4 (5'10"–6'1")	23 3/8–24 1/4	29 7/8–30 7/8

SUGGESTED FABRIC

To sew this sweatshirt, choose knit fabrics with the following properties:

- soft, breathable, non-stretch or with very little stretch, medium weight
- the fiber content can include natural fibers (wool, cotton), artificial fibers (viscose), blends (wool + polyester, cotton + polyester, cotton + elastane, etc.), and synthetics (polyester, polyester + elastane)
- the following fabrics are recommended: thick French terry and lighter weight sweatshirting, jersey.

Attention! We do not recommend lightweight and very stretchy fabrics.

As an additional material for the waistband, cuffs, and neckband, we recommend using rib knits.

The sweatshirt in the photo is made of thick French terry. The fabric is thick and structured, it wrinkles and has very little stretch. The fiber content is 100% cotton. The fabric weight is 470 g/m².

PATTERN PIECES LIST

1. From main fabric:

- front — cut 1 on fold
- back — cut 1 on fold
- top sleeve — cut 2
- sleeve panel — cut 2
- bottom sleeve — cut 2.

***IMPORTANT!** Don't forget to transfer all pattern markings and notches onto the fabric.*

2. From additional fabric:

- cuff — cut 2
- front waistband — cut 1 on fold
- back waistband — cut 1 on fold
- neckband — cut 1.

SEAM ALLOWANCES

All pattern pieces include 1 cm (3/8") seam allowances.

Take this into account when laying out pattern pieces on the fabric.



Press the seam allowances toward the sleeve panel.



Match the lower edge of the sleeve panel piece with the upper edge of the bottom sleeve piece, placing the pieces right sides together. Align the edges and match the notches. Pin and stitch the pieces on the overlocker. Keep the sleeve panel piece facing up.



Press the seam flat.