

FROM THE FOUNDER OF THE #VIKISEWS BRAND

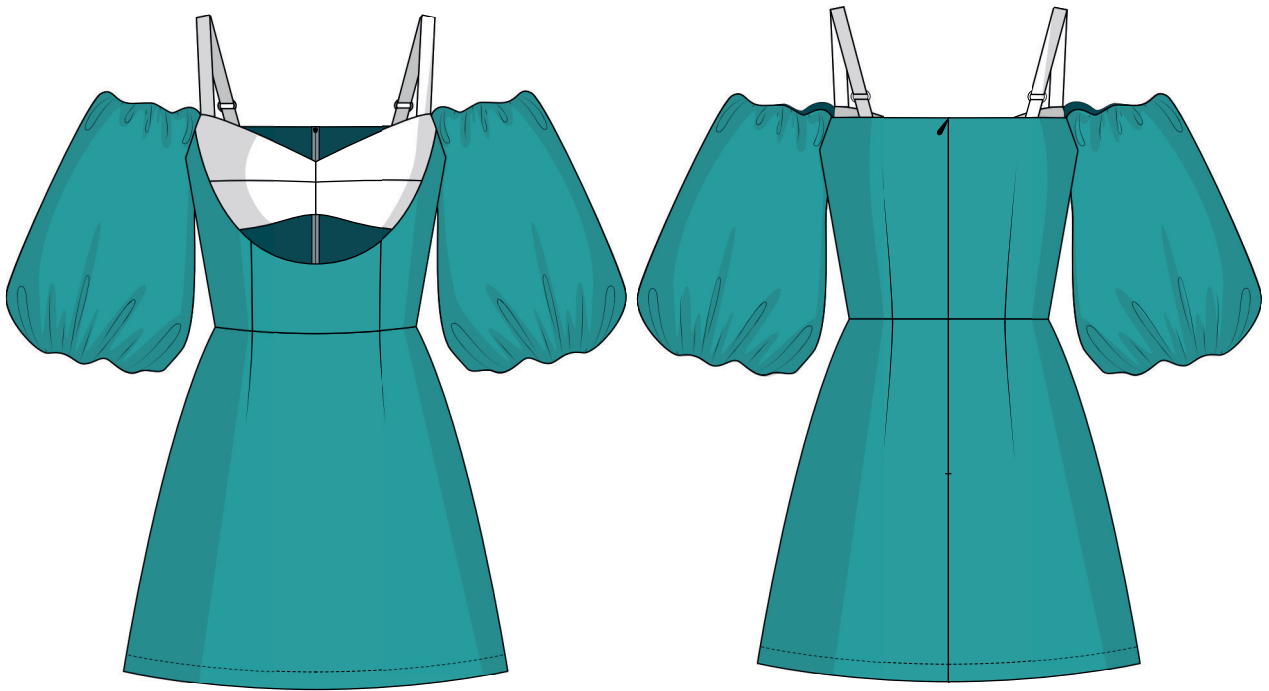


Back in 2016, when I was working on my first set of sewing instructions, I was trying to write them in such a way that even a complete beginner could easily understand and use them to create their very first garment. These instructions laid the foundation for the Vikisews brand, its vision and its mission. I wanted to create modern patterns with the utmost detailed and clear instructions.

Now, with each new collection we are constantly improving our instructions, amending them and adding more relevant details. By the time the final product reaches you, our drafters, correctors, and editors would have spent weeks perfecting every word and every photograph. If you compile a few of our instructions together, you will get a sewing manual that will assist you in sewing all kinds of garments at any difficulty level.

And I would be very happy if these instructions helped you to turn your hobby into a lifelong passion... Enjoy the process! Create your ultimate dream wardrobe! Wear your garments proudly for years to come!

If you have any questions, please contact us at info@vikisews.com — we are always there to help.



ERIN PATTERN DESCRIPTION

Erin is a close-fitting dress with a waist seam. It is fitted with waist darts at the back and princess seams that transition into darts at the front. The front features a deep neckline that extends below the bust line and decorative cups with a shaped neckline and straps. The short, lined set-in sleeves are voluminous and have elasticated casings at the top and bottom. The dress closes with an invisible zipper in the center back seam. Erin is above-knee length.



IMPORTANT!

The contents of this pattern are copyright protected and belong exclusively to Vikisews. You may use Vikisews patterns for personal use. It is prohibited to share Vikisews patterns and instructions with third parties, as well as to publish patterns and instructions online for public access. **Non-compliance with the mentioned rules is a violation of the US copyright law and may result in civil liability and criminal prosecution.**

You may use Vikisews patterns for commercial use, to sew custom-made garments and/or create fashion collections, on the condition that the patterns are solely used in a manufacturing setting and are not further shared with individuals.

TOTAL EASE ALLOWANCE

	Bust ease	Waistline ease	Hipline ease	Upper arm ease (estimated)
cm	4.1–4.3	1.5–1.6	5.1–5.8	43.4–41.1
inches	1 5/8–1 3/4	5/8	2–2 1/4	17 1/8–16 1/8

GARMENT LENGTH, SLEEVE LENGTH

Height, cm	Back length from waist down, cm	Sleeve length, cm
1 (154–160)	39.2–41.4	29.7–30.4
2 (162–168)	42.1–44.4	31.8–32.6
3 (170–176)	45.2–47.4	33.4–34.6
4 (178–184)	48.2–50.4	35.4–36.7

Height, ft	Back length from waist down, in	Sleeve length, in
1 (5'1"–5'3")	15 3/8–16 1/4	11 3/4–12
2 (5'4"–5'6")	16 5/8–17 1/2	12 1/2–12 7/8
3 (5'7"–5'9")	17 3/4–18 5/8	13 1/8–13 5/8
4 (5'10"–6'1")	19–19 7/8	13 7/8–14 1/2

SUGGESTED FABRIC

To sew this dress, choose dress-weight fabrics with the following properties:

- medium weight, pliable, soft, non-stretch or low-stretch
- the fiber content can include natural fibers (cotton, linen), artificial fibers (viscose), blends (cotton + silk, linen + silk, cotton + viscose, etc.), and synthetics (polyester)
- the following fabrics are recommended: linen, dress-weight denim, cotton eyelet fabric, gabardine, cotton, sateen.

As an additional fabric for the cups we recommend using the same fabric as for the garment.

Attention! We do not recommend using stretchy knit fabrics.

The dress in the photo is made of linen. The fabric is medium weight, pliable, soft and non-stretch. The fiber content is 100% linen. The fabric weight is 140 g/m².

As the additional fabric, we used linen. The fabric weight is 140 g/m².

The interfacing weight is 30 g/m².

TOOLS AND EQUIPMENT

- sewing machine for construction
- overlocker for finishing raw edges. This may be replaced with a stretch overlock stitch or a zigzag stitch on the sewing machine (overlock or zigzag stitch width 2–3 mm, stitch length 2.5 mm)
- stitch-in-the-ditch foot for the sewing machine (optional)
- invisible zipper foot for the sewing machine
- one-sided foot for the sewing machine
- elastic threader (may be replaced with a safety pin)
- loop turner.

PATTERN PIECES LIST

1. From main fabric:

- center front bodice — cut 2
- side front bodice — cut 4
- back bodice — cut 2
- front skirt — cut 1 on fold
- back skirt — cut 2
- sleeve — cut 2
- sleeve lining — cut 2
- back facing — cut 2.

2. From additional fabric:

- top cup — cut 4
- bottom cup — cut 4
- strap + strap ring holder — cut 2.

IMPORTANT! Don't forget to transfer all pattern markings and notches onto the fabric.

3. From interfacing:

- top cup — cut 2
- bottom cup — cut 2
- back facing — cut 2
- strap + strap ring holder — cut 2.

Additionally, cut two interfacing strips, 2 cm (3/4") wide, to reinforce the center back seam allowance from the top edge down to the waist seam on the back bodice piece. The interfacing strips should be cut on the straight grain (parallel to the selvedge).

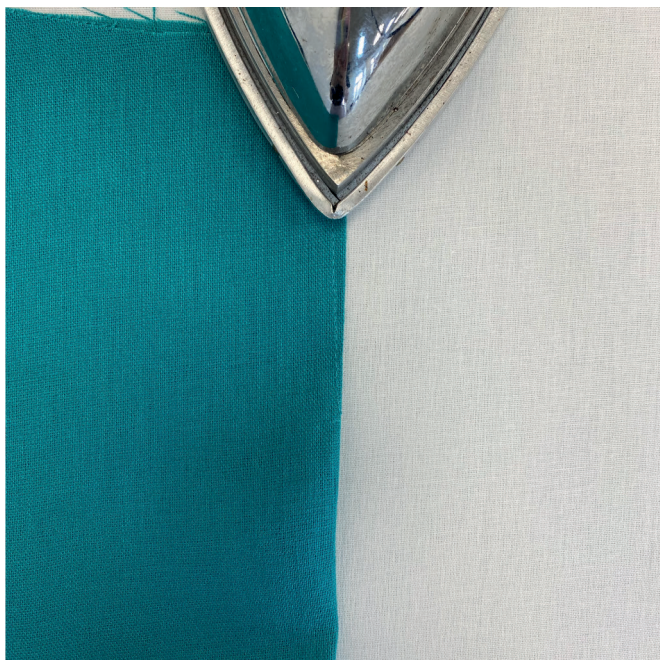
Cut two interfacing strips, 2 cm (3/4") wide, to reinforce the back skirt seam allowance from the waistline down to the zipper notch plus 1 cm (3/8") below the notch. The interfacing strips should be cut on the straight grain (parallel to the selvedge).

SEAM ALLOWANCES

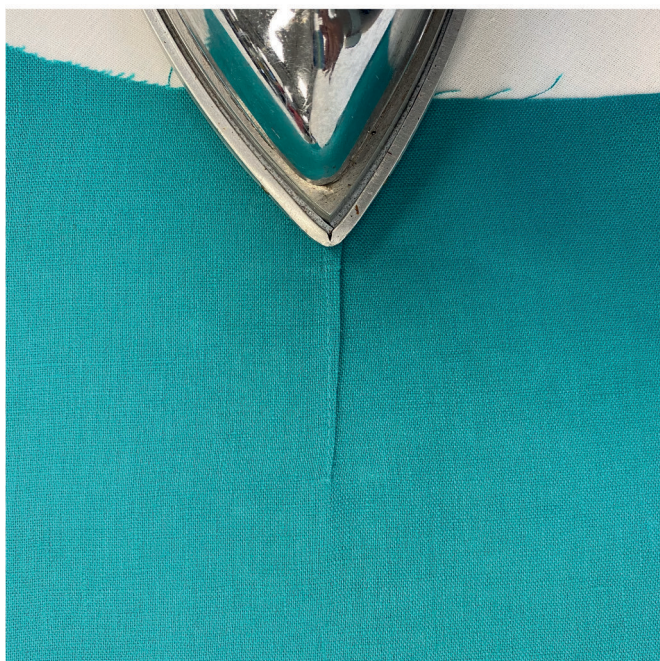
All pattern pieces include seam allowances as follows:

- hem allowance — 3 cm (1 1/8")
- center back seam allowance — 1.5 cm (5/8")
- all other edges — 1 cm (3/8").

Take this into account when laying out pattern pieces on the fabric.



Press the darts flat.



Press the darts on the back bodice, back skirt, and front skirt toward the center.

Press and steam the darts, shrink out the fullness at the dart points on a tailor's ham.



Place the back bodice and back skirt pieces right sides together, align the waist seam edges. Match the notches and pin. Stitch on the sewing machine, backstitching at the beginning and end of the seam.