

# FROM THE FOUNDER OF THE #VIKISEWS BRAND

---

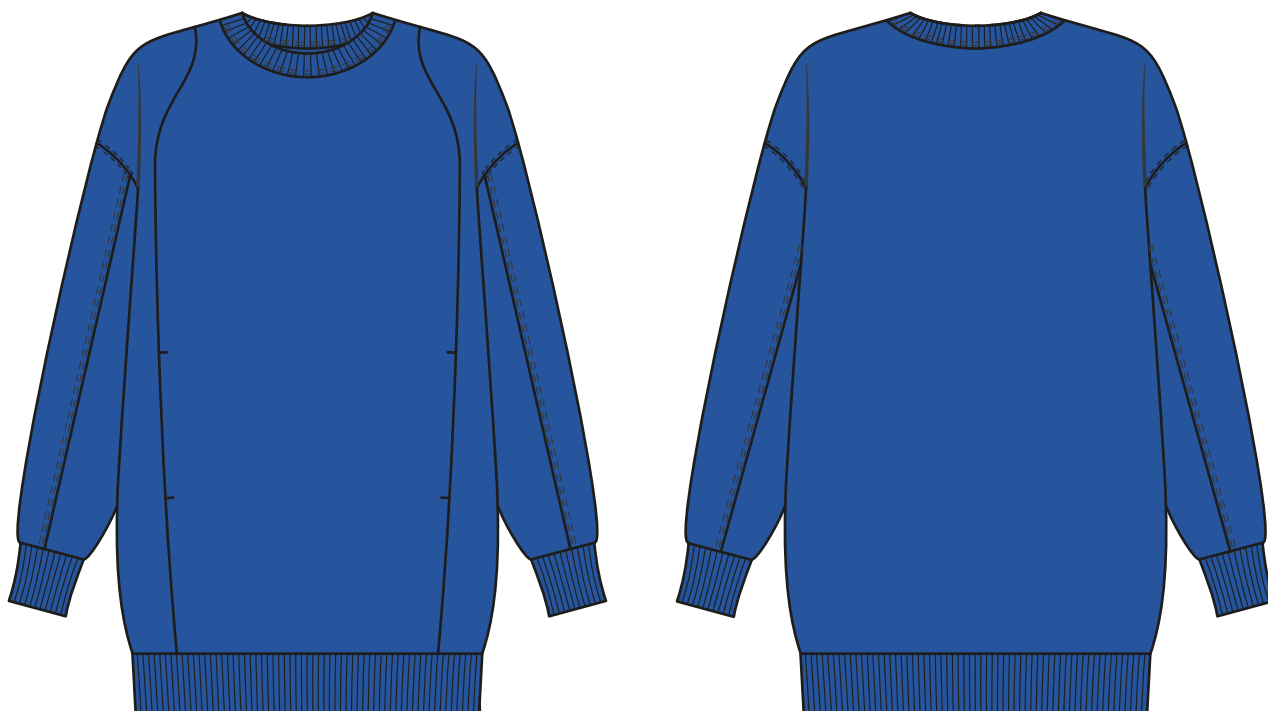


Back in 2016, when I was working on my first set of sewing instructions, I was trying to write them in such a way that even a complete beginner could easily understand and use them to create their very first garment. These instructions laid the foundation for the Vikisews brand, its vision and its mission. I wanted to create modern patterns with the utmost detailed and clear instructions.

Now, with each new collection we are constantly improving our instructions, amending them and adding more relevant details. By the time the final product reaches you, our drafters, correctors, and editors would have spent weeks perfecting every word and every photograph. If you compile a few of our instructions together, you will get a sewing manual that will assist you in sewing all kinds of garments at any difficulty level.

And I would be very happy if these instructions helped you to turn your hobby into a lifelong passion... Enjoy the process! Create your ultimate dream wardrobe! Wear your garments proudly for years to come!

If you have any questions, please contact us at [info@vikisews.com](mailto:info@vikisews.com) - we are always there to help.



## MEG PATTERN DESCRIPTION

---

Meg is an oversized, straight-cut sweatshirt. The front features shaped princess seams with pockets hidden inside them. The sweatshirt has dropped shoulders and shirt sleeves with two decorative seams. The cuffs, waistband, and neckband are made of ribbing. There is decorative topstitching along the sleeve and shoulder seams, as well as along the upper part of the sleeve cap. Meg is below-hip length.



## IMPORTANT!

---

The contents of this pattern are copyright protected and belong exclusively to Vikisews. You may use Vikisews patterns for personal use. It is prohibited to share Vikisews patterns and instructions with third parties, as well as to publish patterns and instructions online for public access. **Non-compliance with the mentioned rules is a violation of the US copyright law and may result in civil liability and criminal prosecution.**

You may use Vikisews patterns for commercial use, to sew custom-made garments and/or create fashion collections, on the condition that the patterns are solely used in a manufacturing setting and are not further shared with individuals.

# TOTAL EASE ALLOWANCE

	Bust ease	Waistline ease	Hipline ease	Upper arm ease
cm	42.2	60.9–61.2	32.5	24.5
inches	16 5/8	24–24 1/8	12 3/4	9 5/8

# GARMENT LENGTH, SLEEVE LENGTH

The garment length is measured at the center back and includes the width of the waistband and neckband. The sleeve length is measured including shoulder and cuff width.

Height, cm	Garment length, cm	Sleeve length, cm
1 (154–160)	73.8	74.1–75.5
2 (162–168)	76.8	76.1–77.5
3 (170–176)	79.8	78–79.2
4 (178–184)	82.8	80–81.5
Height, ft	Garment length, in	Sleeve length, in
1 (5'1"–5'3")	29	29 1/8–29 3/4
2 (5'4"–5'6")	30 1/4	30–30 1/2
3 (5'7"–5'9")	31 3/8	30 3/4–31 1/8
4 (5'10"–6'1")	32 5/8	31 1/2–32 1/8

# SUGGESTED FABRIC

To sew this garment, choose knit fabrics with the following properties:

- soft, breathable, non-stretch or with very little stretch, medium-weight
- the fiber content can include natural fibers (wool, cotton), artificial fibers (viscose), blends (wool + polyester, cotton + polyester, cotton + elastane, etc.), and synthetics (polyester, polyester + elastane)
- the following fabrics are recommended: sweatshirt fleece, thick French terry, ponte di roma.

**Attention!** We do not recommend lightweight sheer fabrics (chiffon, organza, stretch lace).

As an additional material for the waistband, cuffs, and neckband we recommend using rib knits.

The garment in the photo is made of sweatshirt fleece. The fabric is medium-weight, soft, and has very little stretch. The fiber content is a blend of viscose, polyester, and elastane. The waistband, cuffs, and neckband are made of ribbing.

# PATTERN PIECES LIST

---

## 1. From main fabric:

- center front — cut 1 on fold
- side front — cut 2
- back — cut 1 on fold
- top sleeve — cut 2
- bottom back sleeve — cut 2
- bottom front sleeve — cut 2
- pocket bag — cut 2.

***IMPORTANT!** Don't forget to transfer all pattern markings and notches onto the fabric.*

## 2. From additional fabric (ribbing):

- cuff — cut 2
- front waistband — cut 1 on fold
- back waistband — cut 1 on fold
- neckband — cut 1.

## 3. From lining fabric:

- pocket bag — cut 2.

## 4. From interfacing:

- pocket opening seam allowances.

To interface the seam allowances, cut strips of interfacing that are 3.5 cm (1 3/8") wide and as long as the pocket opening (measure on the pattern). The interfacing strips should be cut on the straight grain (parallel to the selvedge).

You can also use premade 1 cm (3/8") wide straight-grain fusible stay tape.

# SEAM ALLOWANCES

---

All pattern pieces include 1 cm (3/8") seam allowances.

Take this into account when laying out pattern pieces on the fabric.



Press the pocket-bag-to-side-front seam allowances open. Topstitch at 2 mm along both sides of the pocket seam, backstitching at the beginning and end of each seam.



Place the center front piece right sides together with the side front piece, align the princess seams along the pocket segment, and pin. Following the seam line, stitch on the sewing machine as follows:

- using a 3 mm stitch length, stitch from the upper part of the pocket seam allowance till the pocket opening
- backstitch
- using a 4 mm stitch length, stitch along the pocket opening
- backstitch
- using a 3 mm stitch length, stitch from the pocket opening till the end of the pocket seam allowance, backstitching at the end of the seam.

