

FROM THE FOUNDER OF THE #VIKISEWS BRAND



Back in 2016, when I was working on my first set of sewing instructions, I was trying to write them in such a way that even a complete beginner could easily understand and use them to create their very first garment. These instructions laid the foundation for the Vikisews brand, its vision and its mission. I wanted to create modern patterns with the utmost detailed and clear instructions.

Now, with each new collection we are constantly improving our instructions, amending them and adding more relevant details. By the time the final product reaches you, our drafters, correctors, and editors would have spent weeks perfecting every word and every photograph. If you compile a few of our instructions together, you will get a sewing manual that will assist you in sewing all kinds of garments at any difficulty level.

And I would be very happy if these instructions helped you to turn your hobby into a lifelong passion... Enjoy the process! Create your ultimate dream wardrobe! Wear your garments proudly for years to come!

If you have any questions, please contact us at info@vikisews.com — we are always there to help.



NEVIA PATTERN DESCRIPTION

Nevia is a loose-fitting, straight-cut dress, flared toward the bottom. The dress has a center front and a center back seam. The front V-neckline is low and slightly rounded. There is a keyhole cut-out in the center front seam that starts at the neckline and reaches the waistline. The cut-on sleeves are below-elbow length. The dress features high slits in the side seams. Nevia is ankle-length.



IMPORTANT!

The contents of this pattern are copyright protected and belong exclusively to Vikisews. You may use Vikisews patterns for personal use. It is prohibited to share Vikisews patterns and instructions with third parties, as well as to publish patterns and instructions online for public access. **Non-compliance with the mentioned rules is a violation of the US copyright law and may result in civil liability and criminal prosecution.**

You may use Vikisews patterns for commercial use, to sew custom-made garments and/or create fashion collections, on the condition that the patterns are solely used in a manufacturing setting and are not further shared with individuals.

TOTAL EASE ALLOWANCE

	Bust ease (estimated)	Waistline ease	Hipline ease	Upper arm ease (estimated)
cm	11.7–33.2	21.7–43.2	21.2–40.8	24.1–39.7
inches	4 5/8–13 1/8	8 1/2–17	8 3/8–16 1/8	9 1/2–15 5/8

GARMENT LENGTH, SLEEVE LENGTH

Height, cm	Garment length at center back, cm	Sleeve length including shoulder width, cm
1 (154–160)	130.1	47.5–48.1
2 (162–168)	133.1	49.5–50.1
3 (170–176)	136.1	51.5–52.1
4 (178–184)	139.1	53.5–54.1

Height, ft	Garment length at center back, in	Sleeve length including shoulder width, in
1 (5'1"–5'3")	51 1/4	18 3/4–18 7/8
2 (5'4"–5'6")	52 3/8	19 1/2–19 3/4
3 (5'7"–5'9")	53 5/8	20 1/4–20 1/2
4 (5'10"–6'1")	54 3/4	21 1/8–21 1/4

SUGGESTED FABRIC

To sew this dress, choose dress-weight fabrics with the following properties:

- medium weight, pliable, soft, non-stretch or low-stretch
- the fiber content can include natural fibers (silk, cotton), artificial fibers (viscose), blends (silk + viscose, cotton + viscose, etc.), and synthetics (polyester, polyester + elastane)
- the following fabrics are recommended: dress-weight viscose, natural silk, artificial silk, chiffon, challis, low-stretch cotton sweater knits.

Attention! We do not recommend stretchy knit materials or heavyweight, structured, stiff fabrics (linen, broderie anglaise).

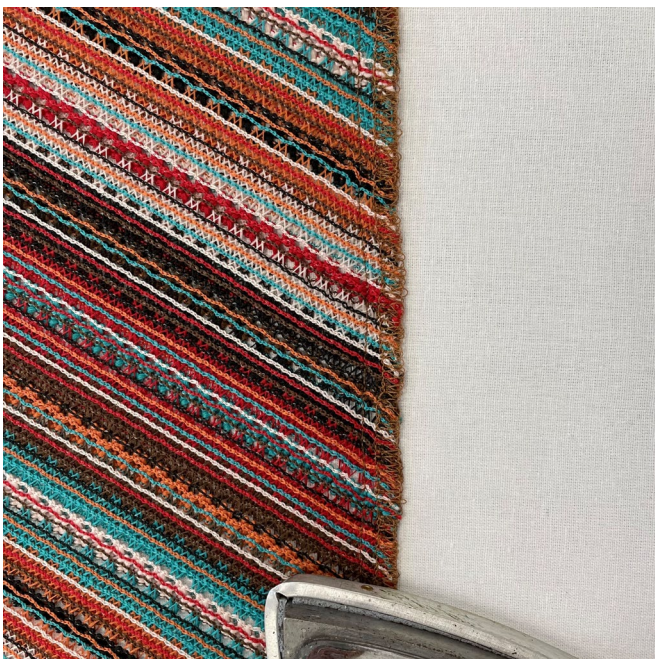
The dress in the photos is made of cotton sweater knit. The fabric is medium weight, pliable, soft, without stretch. The fiber content is 100% cotton.



With the right side facing up, overlock the shoulder seam and center seam edges on the back piece.



Place the two back pieces right sides together, align the center seam edges, match the notches, pin, and stitch on the sewing machine, backstitching at the beginning and end of the seam.



Press the seam flat.