

# FROM THE FOUNDER OF THE #VIKISEWS BRAND

---



Back in 2016, when I was working on my first set of sewing instructions, I was trying to write them in such a way that even a complete beginner could easily understand and use them to create their very first garment. These instructions laid the foundation for the Vikisews brand, its vision and its mission. I wanted to create modern patterns with the utmost detailed and clear instructions.

Now, with each new collection we are constantly improving our instructions, amending them and adding more relevant details. By the time the final product reaches you, our drafters, correctors, and editors would have spent weeks perfecting every word and every photograph. If you compile a few of our instructions together, you will get a sewing manual that will assist you in sewing all kinds of garments at any difficulty level.

And I would be very happy if these instructions helped you to turn your hobby into a lifelong passion... Enjoy the process! Create your ultimate dream wardrobe! Wear your garments proudly for years to come!

If you have any questions, please contact us at [info@vikisews.com](mailto:info@vikisews.com) — we are always there to help.



## REESE PATTERN DESCRIPTION

---

Reese is a close-fitting dress with adjustable spaghetti straps. The front of the dress is fitted with bust darts transferred to the side seams, as well as with waist darts. The shaping at the back is achieved with waist darts. The dress has a center front placket fastening with buttons and rouleau loops. Reese is above-knee length.



## IMPORTANT!

---

The contents of this pattern are copyright protected and belong exclusively to Vikisews. You may use Vikisews patterns for personal use. It is prohibited to share Vikisews patterns and instructions with third parties, as well as to publish patterns and instructions online for public access. **Non-compliance with the mentioned rules is a violation of the US copyright law and may result in civil liability and criminal prosecution.**

You may use Vikisews patterns for commercial use, to sew custom-made garments and/or create fashion collections, on the condition that the patterns are solely used in a manufacturing setting and are not further shared with individuals.

## TOTAL EASE ALLOWANCE

	Bust ease	Waistline ease	Hipline ease
cm	5.3–6.6	7.8–9.6	5.8–7.2
inches	2 1/8–2 5/8	3 1/8–3 3/4	2 1/4–2 7/8

## GARMENT LENGTH

Height, cm	Back length, cm	Height, ft	Back length, in
1 (154–160)	58.1–59.7	1 (5'1"–5'3")	22 7/8–23 1/2
2 (162–168)	60.6–62.2	2 (5'4"–5'6")	23 7/8–24 1/2
3 (170–176)	63.1–64.9	3 (5'7"–5'9")	24 7/8–25 1/2
4 (178–184)	65.7–67.5	4 (5'10"–6'1")	25 7/8–26 5/8

## SUGGESTED FABRIC

To sew this dress, choose dress-weight fabrics with the following properties:

- medium weight, pliable, soft, non-stretch or with very little stretch, opaque
- the fiber content can include natural fibers (silk), artificial fibers (viscose), blends (silk + polyester, silk + viscose, etc.), and synthetics (polyester, polyester + elastane)
- the following fabrics are recommended: satin, crepe, dress-weight viscose, silk.

**Attention!** We do not recommend very stretchy knit fabrics and lightweight sheer fabrics (chiffon, organza, stretch lace).

The dress in the photo is made of artificial silk. The fabric is medium weight, pliable, soft, and non-stretch. The fiber content is 100% polyester.

# PATTERN PIECES LIST

## 1. From main fabric:

- back — cut 1 on fold
- front — cut 2
- placket — cut 1
- back facing — cut 1 on fold
- front facing — cut 2
- strap + ring tab — cut 2
- rouleau loop — cut 2.

## 2. From interfacing:

- placket — cut 1
- back facing — cut 1 on fold
- front facing — cut 2.

**IMPORTANT!** Don't forget to transfer all pattern markings and notches onto the fabric.

# SEAM ALLOWANCES

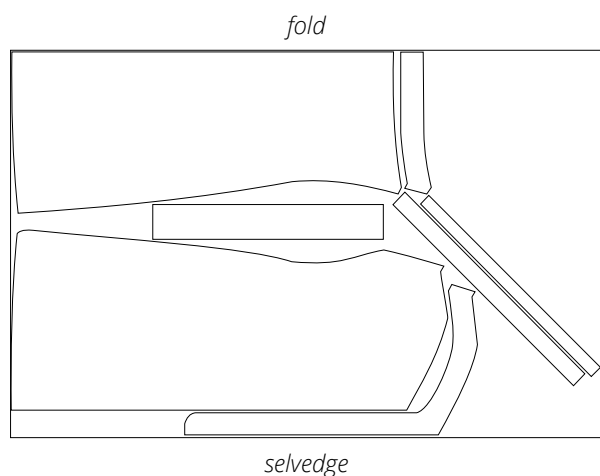
All pattern pieces include seam allowances as follows:

- garment hem allowance — 2 cm (3/4")
- all other edges — 1 cm (3/8").

Take this into account when laying out pattern pieces on the fabric.

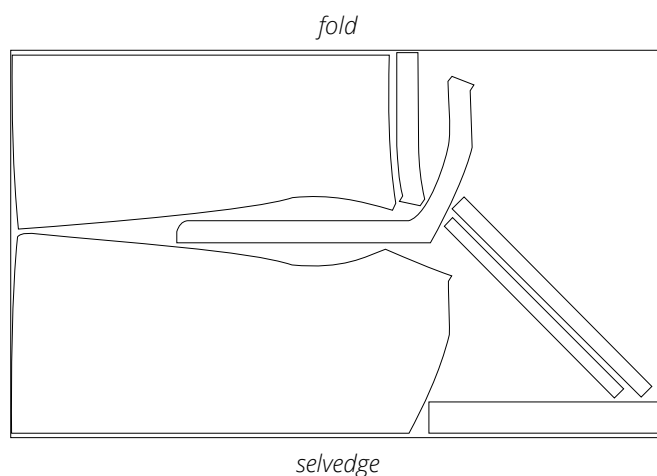
# CUTTING LAYOUT

Main fabric with a directional print,  
140–145 cm (55–57") wide, cut on fold,  
for sizes 34–42 in all heights



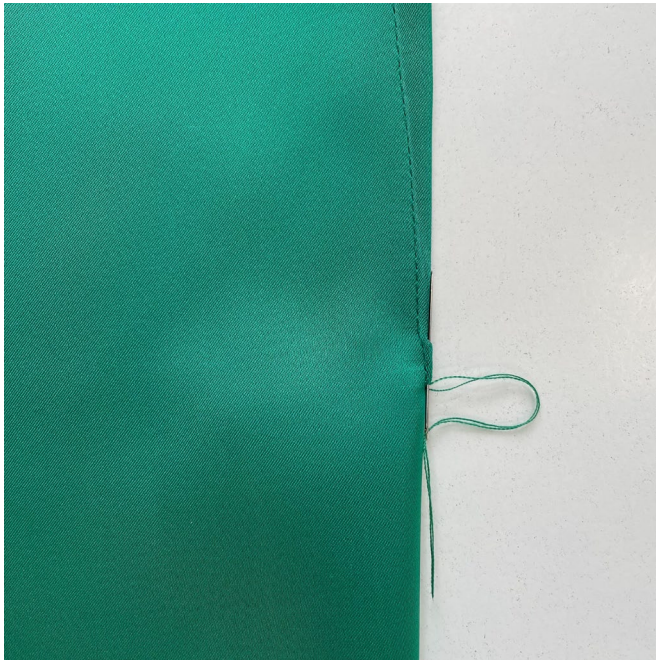
**Important!** Cut only one placket piece.

Main fabric with a directional print,  
140–145 cm (55–57") wide, cut on fold,  
for sizes 44–48 in all heights



**Important!** Cut only one placket piece.





Machine-stitch the bust darts on the front piece, backstitching at the side edge.

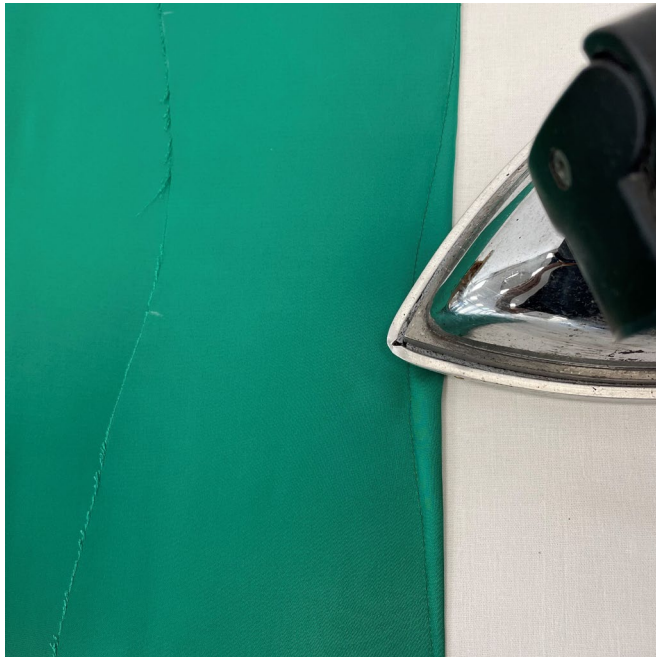
Machine-stitch the waist darts on the front and back pieces without backstitching at the beginning and end of the seam. Tie the thread tails at the dart point into a knot and hide them inside the dart bulk using a needle.

**Attention!** For sizes 42 and larger, we recommend trimming the extra bust dart width.

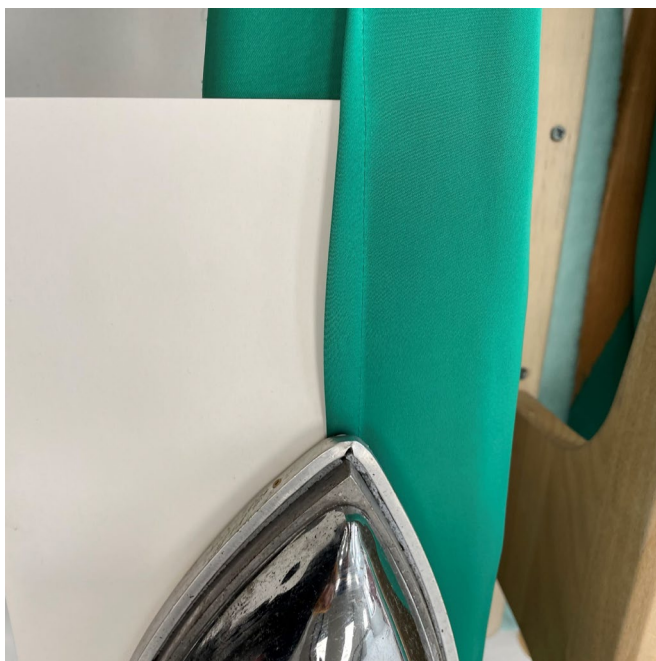
To do so, mark a line at 1 cm (3/8") from the dart seam.

Trim the extra dart width.

Overlock the seam allowance, with the dart underside facing up. Tie the overlocker thread tails into knots and hide them inside the dart bulk.



Press the dart seams flat.



Steam press the darts, shrink out the fullness at the dart point on a tailor's ham.

On the front piece, press the bust darts upwards, and then press the waist darts towards the center front.

On the back piece, press the waist darts towards the center back.

To prevent imprints when pressing, slip a piece of thick paper between the seam allowance and the main piece.