

# FROM THE FOUNDER OF THE #VIKISEWS BRAND

---

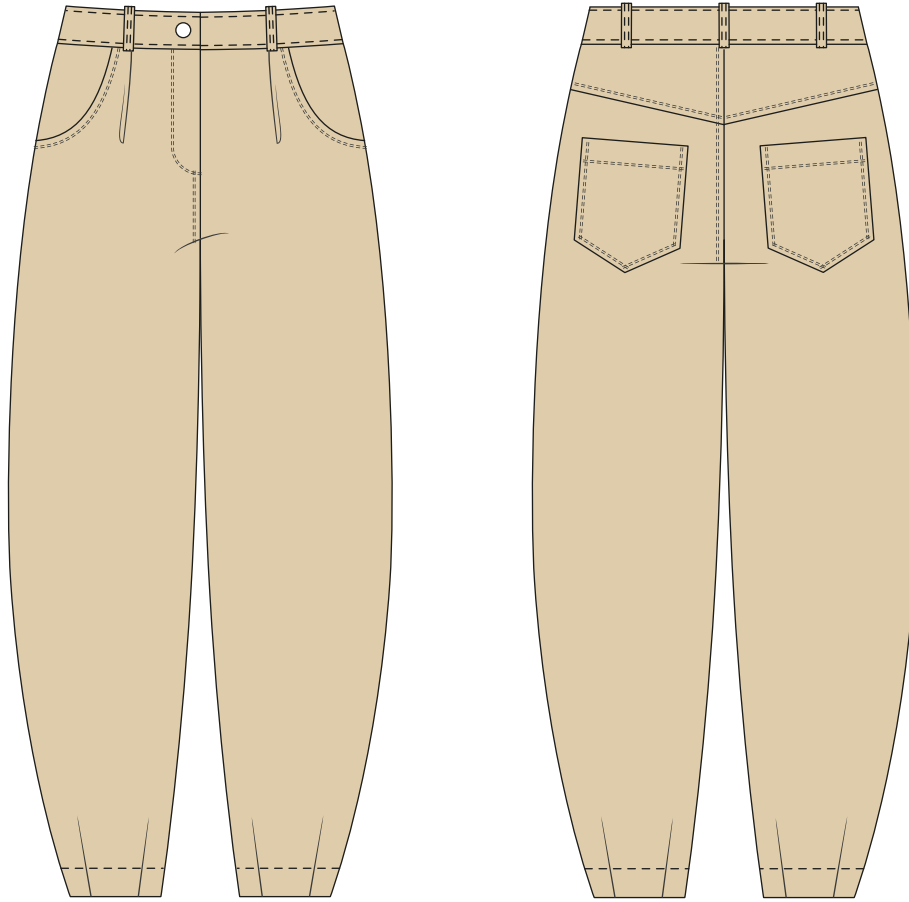


Back in 2016, when I was working on my first set of sewing instructions, I was trying to write them in such a way that even a complete beginner could easily understand and use them to create their very first garment. These instructions laid the foundation for the Vikisews brand, its vision and its mission. I wanted to create modern patterns with the utmost detailed and clear instructions.

Now, with each new collection we are constantly improving our instructions, amending them and adding more relevant details. By the time the final product reaches you, our drafters, correctors, and editors would have spent weeks perfecting every word and every photograph. If you compile a few of our instructions together, you will get a sewing manual that will assist you in sewing all kinds of garments at any difficulty level.

And I would be very happy if these instructions helped you to turn your hobby into a lifelong passion... Enjoy the process! Create your ultimate dream wardrobe! Wear your garments proudly for years to come!

If you have any questions, please contact us at [info@vikisews.com](mailto:info@vikisews.com) - we are always there to help.



## BRITNEY PATTERN DESCRIPTION

---

Britney is a pair of loose-fitting banana pants. The waistband features topstitched belt loops, the front has pockets, and tucks at the waistline. Britney fastens with a fly front zip. The back has a yoke and patch pockets. The bottom has darts which form the tapered silhouette and is finished with facings. The pockets, yoke, waistband, side seams, and hems feature decorative topstitching. The pants are ankle length.



## IMPORTANT!

---

The contents of this pattern are copyright protected and belong exclusively to Vikisews. You may use Vikisews patterns for personal use. It is prohibited to share Vikisews patterns and instructions with third parties, as well as to publish patterns and instructions online for public access. **Non-compliance with the mentioned rules is a violation of the US copyright law and may result in civil liability and criminal prosecution.**

You may use Vikisews patterns for commercial use, to sew custom-made garments and/or create fashion collections, on the condition that the patterns are solely used in a manufacturing setting and are not further shared with individuals.

# TOTAL EASE ALLOWANCE

	Waistline ease	Hipline ease
cm	3	9
inches	1 1/8	3 1/2

# GARMENT LENGTH

Height, cm	Garment length, cm	Height, ft	Garment length, in
1 (154-160)	94	1 (5'1"-5'3")	37
2 (162-168)	98	2 (5'4"-5'6")	38 5/8
3 (170-176)	102	3 (5'7"-5'9")	40 1/8
4 (178-184)	106	4 (5'10"-6'1")	41 3/4

**Attention!** The width of the pant at the hem for sizes 34-46 is 14.4 – 17.4cm (5 5/8"–6 7/8"). The difference between each size is 0.6cm (1/4").

# SUGGESTED FABRIC

To sew these pants, choose woven fabrics with the following properties:

- Medium to heavy weight, soft, structured, non-stretch or with very little stretch, opaque
- The fiber content can include natural fibers (wool, cotton), blends (wool + polyester, cotton + polyester, etc.), and synthetic (polyester, polyester + elastane)
- The following fabrics are recommended: cotton, heavy corduroy, denim, twill

**Attention!** We do not recommend stretchy knit materials and lightweight materials.

The pants in the photo are made of denim fabric. This fabric is medium weight, soft and has very little stretch. The fiber content is a blend of cotton, polyester and elastane.

# TOOLS AND EQUIPMENT

---

- Sewing machine for construction
- Overlocker for finishing raw edges. This may be replaced with a stretch overlock stitch or a zigzag stitch on the sewing machine (overlock or zigzag stitch width 2-3mm, stitch length 2.5mm)
- Buttonhole foot for your sewing machine
- Zipper foot for your sewing machine (optional)
- Stitch-in-the-ditch foot for your sewing machine (optional)

## PATTERN PIECES LIST

---

### 1. From main fabric:

- Front leg – cut 2
- Back leg – cut 2
- Back yoke – cut 2
- Left waistband – cut 2
- Right waistband – cut 2
- Pocket – cut 2
- Patch pocket – cut 2
- Front hem facing – cut 2
- Back hem facing – cut 2
- Belt loops – cut 1
- Fly shield – cut 1

### 2. From lining:

- Pocket bag – cut 2

### 3. From interfacing:

- Left waistband – cut 2
- Right waistband – cut 2
- Fly extension – cut 1

You will also need to cut strips of interfacing to reinforce the upper seam allowance of the patch pockets.

**IMPORTANT!** Don't forget to transfer all pattern markings and notches onto the fabric.

## SEAM ALLOWANCES

---

All pattern pieces include 1cm (3/8") seam allowances.  
Take this into account when laying out pattern pieces on the fabric.



Press the seam flat.



Press the seam allowance towards the yoke.



Topstitch the seam allowance to the yoke with two parallel lines of stitching. Stitch on the right side of the yoke with topstitching thread, at 2mm (1/16") and 9mm (just under 3/8") from the seam, with a stitch length of 4mm (3/16").