

FROM THE FOUNDER OF THE #VIKISEWS BRAND

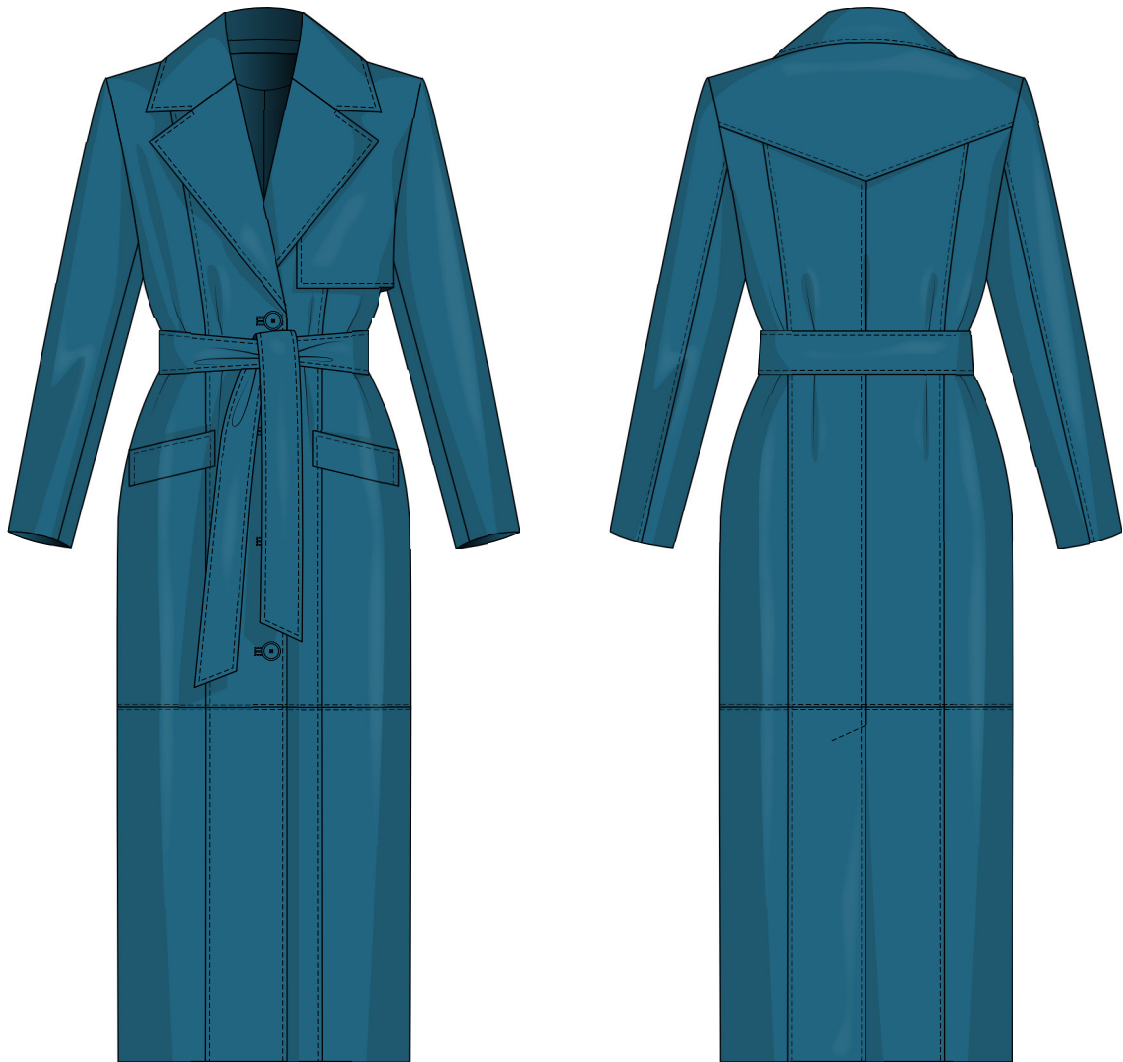


Back in 2016, when I was working on my first set of sewing instructions, I was trying to write them in such a way that even a complete beginner could easily understand and use them to create their very first garment. These instructions laid the foundation for the Vikisews brand, its vision and its mission. I wanted to create modern patterns with the utmost detailed and clear instructions.

Now, with each new collection we are constantly improving our instructions, amending them and adding more relevant details. By the time the final product reaches you, our drafters, correctors, and editors would have spent weeks perfecting every word and every photograph. If you compile a few of our instructions together, you will get a sewing manual that will assist you in sewing all kinds of garments at any difficulty level.

And I would be very happy if these instructions helped you to turn your hobby into a lifelong passion... Enjoy the process! Create your ultimate dream wardrobe! Wear your garments proudly for years to come!

If you have any questions, please contact us at info@vikisews.com - we are always there to help.



GLADYS PATTERN DESCRIPTION

Gladys is a semi-fitted, straight-cut, fully lined coat featuring a detachable belt. The shaping of the coat is achieved with a center back seam, as well as with princess seams on the back and front. There is a shaped yoke on the back. The center back seam is finished with a vent. The front of the coat features a rectangular-shaped storm flap attached to the shoulder seam, as well as to the armhole of the garment. There are horizontal seams above the knee, which run across the front and back of the garment. Gladys features decorative topstitching along the main seams. The classic stand-collar features rectangular-shaped lapels. The coat has welt pockets at the hip level and long, set-in, two-piece sleeves. It has a center front closure, featuring buttons and bound buttonholes. Gladys is below-knee length.



IMPORTANT!

The contents of this pattern are copyright protected and belong exclusively to Vikisews. You may use Vikisews patterns for personal use. It is prohibited to share Vikisews patterns and instructions with third parties, as well as to publish patterns and instructions online for public access. **Non-compliance with the mentioned rules is a violation of the US copyright law and may result in civil liability and criminal prosecution.**

You may use Vikisews patterns for commercial use, to sew custom-made garments and/or create fashion collections, on the condition that the patterns are solely used in a manufacturing setting and are not further shared with individuals.

TOTAL EASE ALLOWANCE

	Bust ease	Waistline ease	Hipline ease	Upper arm ease
cm	21	41.6	18	8
inches	8 1/4	16 3/8	7 1/8	3 1/8

GARMENT LENGTH, SLEEVE LENGTH

Height, cm	Center back length, cm	Sleeve length, cm	Height, ft	Center back length, in	Sleeve length, in
1 (154–160)	116.9–118.7		1 (5'1"–5'3")	46–46 3/4	23 1/2–24 1/4
2 (162–168)	120.9–122.7	59.8–61.5	2 (5'4"–5'6")	47 5/8–48 1/4	24 3/4–25
3 (170–176)	124–126.7	61.8–63.5	3 (5'7"–5'9")	48 7/8–49 7/8	25 1/8–25 3/4
4 (178–184)	128.9–130.7	63.8–65.4	4 (5'10"–6'1")	50 3/4–51 1/2	25 7/8–26 1/2
		65.8–67.4			

SUGGESTED FABRIC

To sew this coat, choose fabrics with the following properties:

- medium-weight, durable, non-stretch or low-stretch, opaque
- the fabric content can include natural (wool, cotton, linen), artificial (viscose), blends (man-made silk + polyurethane + elastane, cotton + polyester, cotton + viscose, etc.), and synthetic fibers (polyester + polyurethane, polyester + elastane)
- the following fabrics are recommended: faux leather, denim, corduroy, blended raincoat fabrics, thick cotton gabardine.

Attention! We do not recommend very stretchy knit materials (jersey fabric) and lightweight sheer fabrics (chiffon, stretch lace).

For the lining, choose lining fabrics made of artificial (viscose), blends (viscose + elastane, viscose + polyester), and synthetic fibers (polyester, polyester + elastane).

The coat in the photo is made of faux leather. This fabric is medium-weight, pliable, and has little stretch. The fiber content is a blend of man-made silk, polyurethane and elastane.

The lining is 100% viscose.

TOOLS AND EQUIPMENT

- sewing machine for construction
- stitch-in-the-ditch foot for the sewing machine (optional)
- walking or ultra-glide (Teflon) foot
- no. 100 needles for the topstitching.

PATTERN PIECES LIST

1. From main fabric:

- top front - cut 2
- bottom front - cut 2
- top side front - cut 2
- bottom side front - cut 2
- storm flap - cut 1
- top back - cut 2
- bottom back - cut 2
- back yoke - cut 1 on fold
- top side back - cut 2
- bottom side back - cut 2
- top sleeve - cut 2
- bottom sleeve - cut 2
- upper collar - cut 1 on fold
- undercollar - cut 2
- collar stand - cut 2
- back neck facing - cut 1 on fold
- front facing - cut 2
- welt - cut 2
- pocket facing - cut 2
- belt - cut 1.

2. From lining fabric:

- front lining - cut 2
- back lining - cut 2
- top sleeve lining - cut 2
- bottom sleeve lining - cut 2
- storm flap lining - cut 1
- top pocket bag - cut 2
- bottom pocket bag - cut 2.

IMPORTANT! Don't forget to transfer all the notches from the pattern to your fabric.

3. From interfacing:

- top front - cut 2
- bottom front - cut 2
- top side front - cut 2
- bottom side front - cut 2
- top back - cut 2
- bottom back - cut 2
- back yoke - cut 1 on fold
- top side back - cut 2
- bottom side back - cut 2
- upper collar - cut 1 on fold
- undercollar - cut 2
- collar stand - cut 2
- back neck facing - cut 1 on fold
- front facing - cut 2
- welt - cut 2
- pocket facing - cut 2
- belt - cut 1.



Using a pressing cloth, press the seam allowances flat, and then press them open.



Topstitch at 1–2 mm from the joining seam.

For the topstitching, use topstitching thread for the needle, and regular thread for the bobbin, as well as #90 or #100 size needles. Adjust the settings for the topstitching by increasing the tension for the upper thread. Use a 4 mm stitch length.



Join the pieced back pieces, right sides together, align the edges along the center back seam, and match all the notches. Pin within the seam allowance.