

# FROM THE FOUNDER OF THE #VIKISEWS BRAND

---

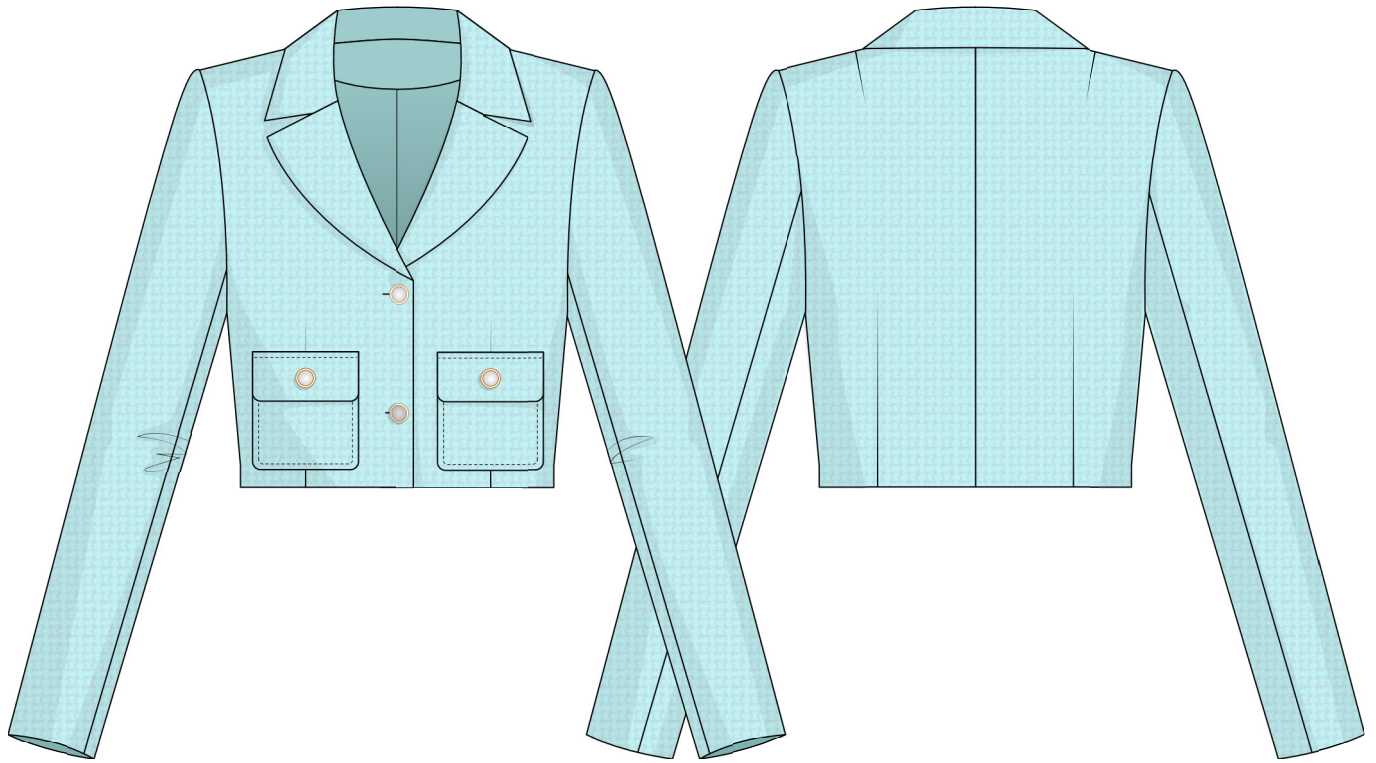


Back in 2016, when I was working on my first set of sewing instructions, I was trying to write them in such a way that even a complete beginner could easily understand and use them to create their very first garment. These instructions laid the foundation for the Vikisews brand, its vision and its mission. I wanted to create modern patterns with the utmost detailed and clear instructions.

Now, with each new collection we are constantly improving our instructions, amending them and adding more relevant details. By the time the final product reaches you, our drafters, correctors, and editors would have spent weeks perfecting every word and every photograph. If you compile a few of our instructions together, you will get a sewing manual that will assist you in sewing all kinds of garments at any difficulty level.

And I would be very happy if these instructions helped you to turn your hobby into a lifelong passion... Enjoy the process! Create your ultimate dream wardrobe! Wear your garments proudly for years to come!

If you have any questions, please contact us at [info@vikisews.com](mailto:info@vikisews.com) — we are always there to help.



## BRYCE PATTERN DESCRIPTION

---

Bryce is a cropped semi-fitted blazer with an accentuated waist. The front bust darts are converted into waist darts. There are waist and shoulder darts at the back. The turn-down collar is an imitation of the classic blazer-style notched collar. There are lower front patch pockets with flaps. The flaps close with buttons and buttonholes. The blazer has long, set-in, two-piece sleeves and a front button and buttonhole closure. The blazer is lined and finishes 2cm (3/4") below the waistline.



## IMPORTANT!

---

The contents of this pattern are copyright protected and belong exclusively to Vikisews. You may use Vikisews patterns for personal use. It is prohibited to share Vikisews patterns and instructions with third parties, as well as to publish patterns and instructions online for public access. According to part 1 of clause 1252 and clause 1301 of the Civil Code of the Russian Federation, failure to comply with the mentioned rules constitutes a breach of the legislation in force in the field of copyright and entails liability of the violator. Illegal use or distribution will be prosecuted in accordance with legislation.

You may use Vikisews patterns for commercial use, to sew custom-made garments and/or create fashion collections, on the condition that the patterns are solely used in a manufacturing setting and are not further shared with individuals.

# TOTAL EASE ALLOWANCE

	Bust ease	Waistline ease	Upper arm ease
cm	13.5–13.8	17.5–17.6	7
inches	5 3/8	6 7/8	2 3/4

# GARMENT LENGTH, SLEEVE LENGTH

Height, cm	Back length, cm	Sleeve length, cm
1 (154–160)	39.1–40.9	58.8–60.7
2 (162–168)	40.1–41.9	60.8–62.6
3 (170–176)	41.1–42.9	62.8–64.6
4 (178–184)	42.1–43.9	64.8–66.6
Height, ft	Back length, in	Sleeve length, in
1 (5'1"–5'3")	15 3/8–16 1/8	23 1/8–23 7/8
2 (5'4"–5'6")	15 3/4–16 1/2	23 7/8–24 5/8
3 (5'7"–5'9")	16 1/8–16 7/8	24 3/4–25 3/8
4 (5'10"–6'1")	16 5/8–17 1/4	25 1/2–26 1/4

# SUGGESTED FABRIC

To sew this garment, choose suiting and dress-weight fabrics with the following properties:

- medium-weight, non-stretch or low-stretch, opaque
- the fiber content can include natural fibers (wool, silk, cotton, linen), artificial fibers (viscose), blends (wool + silk, wool + polyester, cotton + viscose, etc.), and synthetics (polyester, polyester + elastane)
- the following fabrics are recommended: wool suiting, gabardine, tweed, corduroy, faux leather, suede.

**Attention!** We do not recommend very stretchy materials (knits) or lightweight, drapey, sheer fabrics (chiffon, challis, organza, stretch lace).

For the lining, choose lining fabrics made of artificial fibers (viscose), blends (viscose + elastane, viscose + polyester), and synthetics (polyester, polyester + elastane).

The garment in the photos is made of suiting. The fabric is medium-weight, pliable, soft, low-stretch. The fiber content is a blend of polyester, viscose and elastane.

The lining is a blend of viscose and polyester.

# PATTERN PIECES LIST

---

## 1. From main fabric:

- front – cut 2
- back – cut 2
- top sleeve – cut 2
- bottom sleeve – cut 2
- upper collar – cut 1 on fold
- undercollar – cut 2
- top lapel – cut 2
- bottom lapel – cut 2
- back neck facing – cut 1 on fold
- front facing – cut 2
- pocket – cut 2
- flap – cut 2.

**IMPORTANT!** Don't forget to transfer all pattern markings and notches onto the fabric.

## Additionally, cut the following from interfacing:

- 2 strips, 3cm (1 1/8") wide, to interface the pocket flap stitching area on the front piece
- 2 strips, 4.5cm (1 3/4") wide, to interface the cut-on pocket facing.

The interfacing strips should be cut on the straight grain (parallel to the selvedge).

## 2. From lining fabric:

- front lining – cut 2
- back lining – cut 2
- top sleeve lining – cut 2
- bottom sleeve lining – cut 2
- flap lining – cut 2
- pocket lining – cut 2.

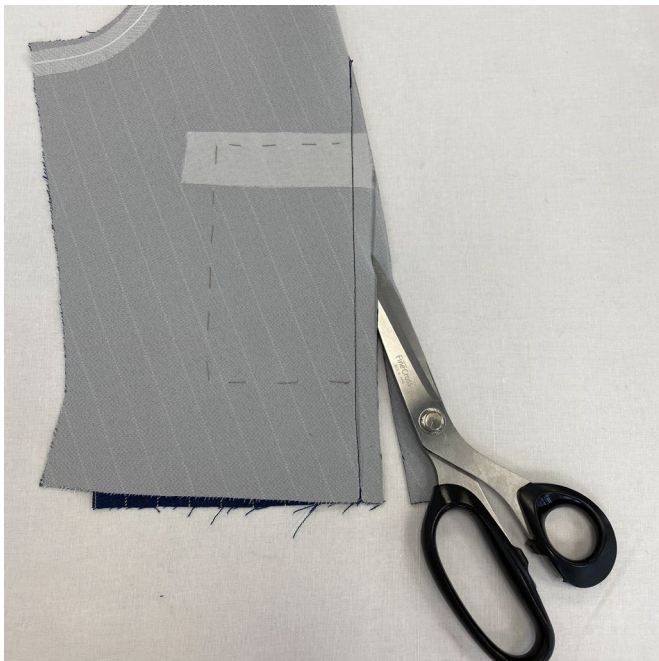
## 3. From interfacing:

- front – cut 2
- back – cut 2
- upper collar – cut 1 on fold
- undercollar – cut 2
- top lapel – cut 2
- bottom lapel – cut 2
- back neck facing – cut 1 on fold
- front facing – cut 2
- flap – cut 2
- flap lining – cut 2
- upper sleeve cap section of the top sleeve – cut 2 (the interfaced area is marked on the pattern)
- bottom section of the top sleeve – cut 2 (the interfaced area is marked on the pattern)
- upper sleeve cap section of the bottom sleeve – cut 2 (the interfaced area is marked on the pattern)
- bottom section of the bottom sleeve – cut 2 (the interfaced area is marked on the pattern).





Press the seam allowances flat.



Trim the seam allowance of the front bust dart down to 1cm (3/8"). Cut the dart down the middle at the top, up to about 1cm (3/8") from the dart point.



Press the seam allowances open.