

# FROM THE FOUNDER OF THE #VIKISEWS BRAND

---

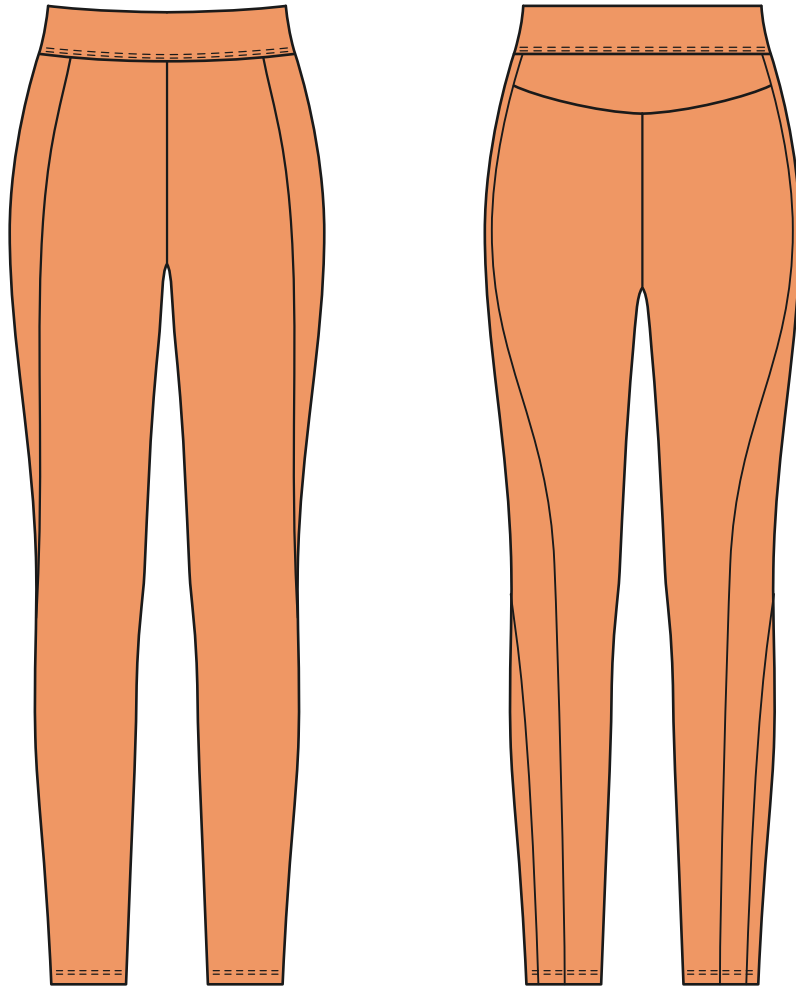


Back in 2016, when I was working on my first set of sewing instructions, I was trying to write them in such a way that even a complete beginner could easily understand and use them to create their very first garment. These instructions laid the foundation for the Vikisews brand, its vision and its mission. I wanted to create modern patterns with the utmost detailed and clear instructions.

Now, with each new collection we are constantly improving our instructions, amending them and adding more relevant details. By the time the final product reaches you, our drafters, correctors, and editors would have spent weeks perfecting every word and every photograph. If you compile a few of our instructions together, you will get a sewing manual that will assist you in sewing all kinds of garments at any difficulty level.

And I would be very happy if these instructions helped you to turn your hobby into a lifelong passion... Enjoy the process! Create your ultimate dream wardrobe! Wear your garments proudly for years to come!

If you have any questions, please contact us at [info@vikisews.com](mailto:info@vikisews.com) - we are always there to help.



## MOLLY PATTERN DESCRIPTION

---

Molly is a pair of close-fitting leggings with a slim fit silhouette. The back features a small yoke. The sides feature curved decorative panels. The leggings have an elastic waistband, and are ankle length.

**Attention!** We recommend printing this pattern in A4 format for paper and money saving purposes.



## IMPORTANT!

---

The contents of this pattern are copyright protected and belong exclusively to Vikisews. You may use Vikisews patterns for personal use. It is prohibited to share Vikisews patterns and instructions with third parties, as well as to publish patterns and instructions online for public access. **Non-compliance with the mentioned rules is a violation of the US copyright law and may result in civil liability and criminal prosecution.**

You may use Vikisews patterns for commercial use, to sew custom-made garments and/or create fashion collections, on the condition that the patterns are solely used in a manufacturing setting and are not further shared with individuals.

# TOTAL EASE ALLOWANCE

---

	Waistline ease	Hipline ease
cm	-6	-27.3
inches	-2 3/8	-10 3/4

# GARMENT LENGTH

---

Height, cm	Garment side length including waistband, cm	Height, ft	Garment side length including waistband, in
1 (154–160)	89.6–91.1	1 (5'1"–5'3")	35 1/4–35 7/8
2 (162–168)	93.9–95.4	2 (5'4"–5'6")	37–37 1/2
3 (170–176)	98.2–99.7	3 (5'7"–5'9")	38 5/8–39 1/4
4 (178–184)	102.5–104	4 (5'10"–6'1")	40 3/8–41

# SUGGESTED FABRIC

---

To sew these leggings, choose knit fabrics with the following properties:

- Soft, elastic, stretch, medium weight
- The fiber content can include natural fibers (cotton), artificial (viscose), blends (cotton + polyester, cotton + elastane, etc.), and synthetic (polyester, polyester + elastane)
- The following fabrics are recommended: biflex, stretch double knits, interlock knits.

**Attention!** We do not recommend lightweight sheer fabrics (chiffon, organza, stretch lace).

We recommend elastic as an additional material for the waistband.

The leggings in the photo are made of biflex. This fabric is medium weight, soft, and stretch. The fiber content is a blend: polyester + elastane. The waistband is made of elastic.

# PATTERN PIECES LIST

---

## 1. From main fabric:

- back yoke – cut 1 on fold
- back leg – cut 2
- panel – cut 2
- front leg – cut 2

## 2. From additional material:

- waistband (elastic) – cut 1

*IMPORTANT! Don't forget to transfer all pattern markings and notches onto the fabric.*

# SEAM ALLOWANCES

---

All pattern pieces include seam allowances as follows:

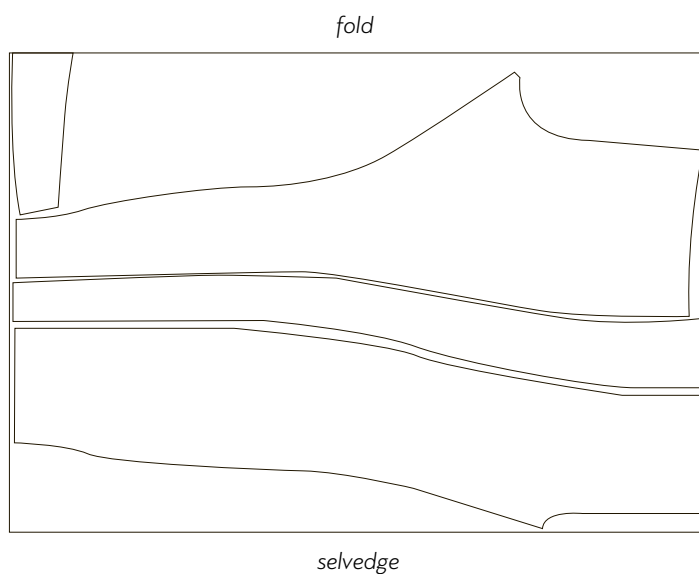
- garment hem allowance – 2 cm (3/4")
- all other edges – 1 cm (3/8")

Take this into account when laying out pattern pieces on the fabric.

# CUTTING LAYOUT

---

Main fabric, 140 cm (55") wide, folded, for all sizes in all heights, with a directional print/nap



**READY? LET'S GET SEWING!**

---



At the top, press the seam allowance towards the left leg piece.



Place the bottom edge of the yoke piece to the top edge of the assembled back leg pieces, matching the notches. Pin, hand-baste if necessary, and stitch on the overlocker. Overlock with the assembled back leg pieces facing up.



Press the seam allowance flat, then press towards the yoke piece.



Place the assembled pieces and the panel pieces right sides together, aligning the edges and matching the notches. Pin, hand-baste if necessary, and stitch on the 4-thread overlocker. Overlock with the assembled back leg pieces facing up.