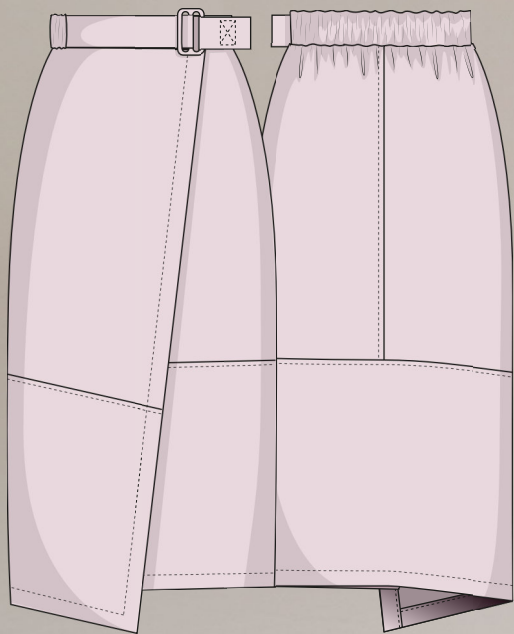


VIKISEWS

SKIRT **VILORA**



SIZES
34-52

DIFFICULTY



INTERMEDIATE



FROM THE FOUNDER OF THE #VIKISEWS BRAND

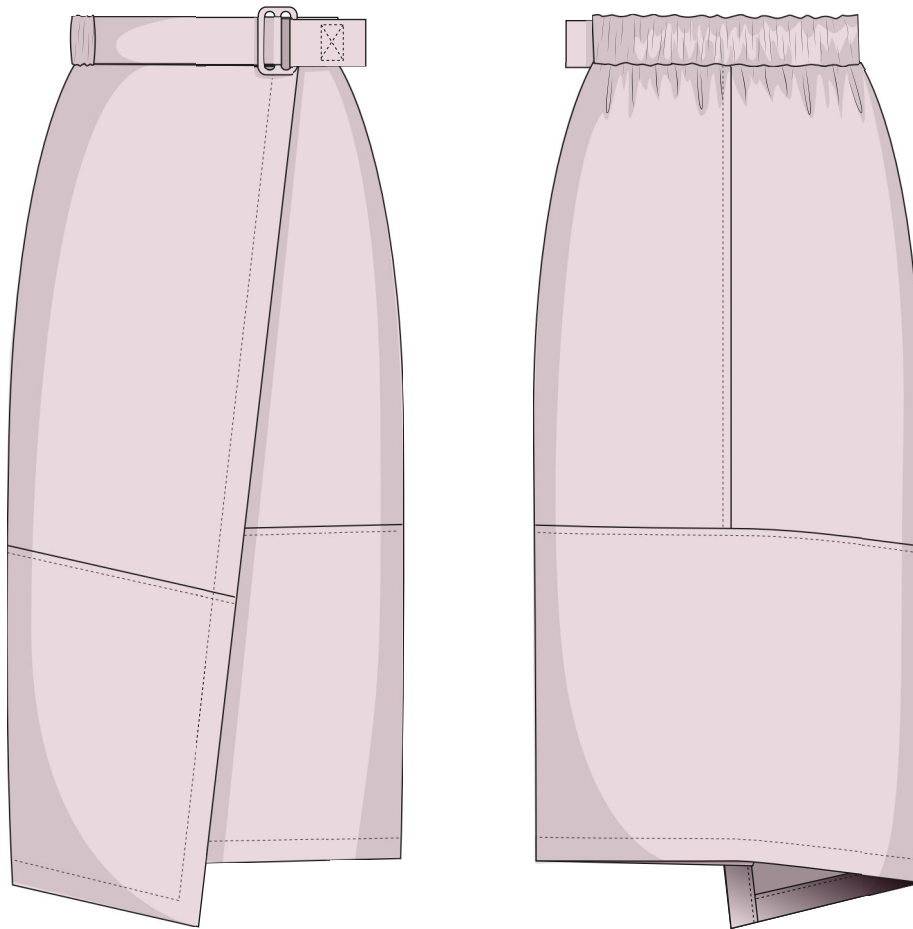


Back in 2016, when I was working on my first set of sewing instructions, I was trying to write them in such a way that even a complete beginner could easily understand and use them to create their very first garment. These instructions laid the foundation for the Vikisews brand, its vision and its mission. I wanted to create modern patterns with the utmost detailed and clear instructions.

Now, with each new collection we are constantly improving our instructions, amending them and adding more relevant details. By the time the final product reaches you, our drafters, correctors, and editors would have spent weeks perfecting every word and every photograph. If you compile a few of our instructions together, you will get a sewing manual that will assist you in sewing all kinds of garments at any difficulty level.

And I would be very happy if these instructions helped you to turn your hobby into a lifelong passion... Enjoy the process! Create your ultimate dream wardrobe! Wear your garments proudly for years to come!

If you have any questions, please contact us at info@vikisews.com - we are always there to help.



VILORA PATTERN DESCRIPTION

Vilora is a semi-fitted wrap skirt with a straight silhouette. It features an asymmetrical horizontal design line below the hip on both the front and back panels. The back of the skirt has a center seam in the top section. The asymmetry of the skirt is emphasized by the angled edge on the right side and the longer hemline which extends from the center to the side seam. Vilora has a waistband with an elasticated section in the back. The left front waistband features a belt which fastens with a buckle and thus secures the waistband at the waist. The top of the waistband sits at the natural waistline. The skirt fastens with Velcro. Topstitching is featured along the center seam of the back panel, the asymmetrical design line, the front edge, and along the hem of the garment.



IMPORTANT!

The contents of this pattern are copyright protected and belong exclusively to Vikisews. You may use Vikisews patterns for personal use. It is prohibited to share Vikisews patterns and instructions with third parties, as well as to publish patterns and instructions online for public access. **Non-compliance with the mentioned rules is a violation of the US copyright law and may result in civil liability and criminal prosecution.**

You may use Vikisews patterns for commercial use, to sew custom-made garments and/or create fashion collections, on the condition that the patterns are solely used in a manufacturing setting and are not further shared with individuals.

TOTAL EASE ALLOWANCE

	Waistline ease	Hipline ease
cm	0.2	5.6–5.7
inches	1/8	2 1/4

GARMENT LENGTH

Height, cm	Garment length at center back including waistband, cm	Height, ft	Garment length at center back including waistband, in
1 (154–160)		1 (5'1"–5'3")	27 3/4
2 (162–168)	70.4	2 (5'4"–5'6")	28 7/8
3 (170–176)	73.4	3 (5'7"–5'9")	30 1/8
4 (178–184)	76.4	4 (5'10"–6'1")	31 1/4
	79.4		

ELASTIC LENGTH

Size	34	36	38	40	42	44	46	48	50	52
Elastic length, cm	36.2	38.1	40	41.9	43.8	45.7	47.6	49.2	50.8	52.4
Elastic length, in	14 1/4	15	15 3/4	16 1/2	17 1/4	18	18 3/4	19 3/8	20	20 5/8

SUGGESTED FABRIC

To sew this skirt, choose woven fabrics with the following properties:

- Medium weight, structured, breathable, soft, non-stretch or with very little stretch, opaque
- The fiber content can include natural fibers (wool, silk, cotton, linen), artificial (viscose), blends (wool + silk, cotton + polyester, cotton + viscose, etc.), and synthetic fibers (polyester, polyester + elastane)
- The following fabrics are recommended: dress-weight or suiting wool, gabardine, denim, micro-corduroy, faux leather, cotton suiting, linen suiting

Attention! We do not recommend stretchy knit materials and lightweight sheer fabrics (chiffon, organza, stretch lace).

The skirt in the photo is made of denim fabric. This fabric is medium weight, soft, structured, and has very little stretch. The fiber content is 100% cotton.

TOOLS AND EQUIPMENT

- Sewing machine for construction
- Overlocker for finishing raw edges. This may be replaced with a stretch overlock stitch or a zigzag stitch on the sewing machine (overlock or zigzag stitch width 2-3mm, stitch length 2.5mm)
- Stitch-in-the-ditch foot for your sewing machine (optional)
- Bodkin for threading elastic through a channel (may be replaced with a safety pin)

PATTERN PIECES LIST

1. From main fabric:

- Top right back - cut 1
- Top left back - cut 1
- Bottom back - cut 1
- Top left front - cut 1
- Bottom left front - cut 1
- Top right front - cut 1
- Bottom right front - cut 1
- Back waistband - cut 1
- Large right front waistband - cut 1
- Small right front waistband - cut 1
- Buckle strap - cut 1
- Left front waistband - cut 1
- Belt - cut 1
- Right front facing - cut 1
- Left front facing - cut 1

***IMPORTANT!** Don't forget to transfer all pattern markings and notches onto the fabric.*

2. From interfacing:

- Right front facing – cut 1
- Left front facing – cut 1
- Left front waistband – cut 1
- Large right front waistband – cut 1
- Small right front waistband – cut 1

SEAM ALLOWANCES

The pattern pieces include the following seam allowances:

- Garment hem — 3.7 cm (1 1/2")
- All other edges — 1 cm (3/8")

Take this into account when laying out pattern pieces on the fabric.



Place the top right back and top left back pieces right sides together, align the center edges, match notches, and pin. Place the assembled top back piece right sides together with the top left front on the left side, and with the top right front on the right side. Match all notches, pin, hand-baste if necessary. Baste at 1.2–1.5 cm (just under 5/8") from the edge in order to prevent the basting threads from getting caught in the stitching line.

Machine-stitch all seams, backstitching at the beginning and end.



Place the bottom back piece right sides together with the bottom right and left front pieces, align the side edges. Pin and hand-baste if necessary. Machine-stitch with backstitches at each end of the stitching lines.



Press the seams flat, then press the seam allowances open.