

# FROM THE FOUNDER OF THE #VIKISEWS BRAND

---

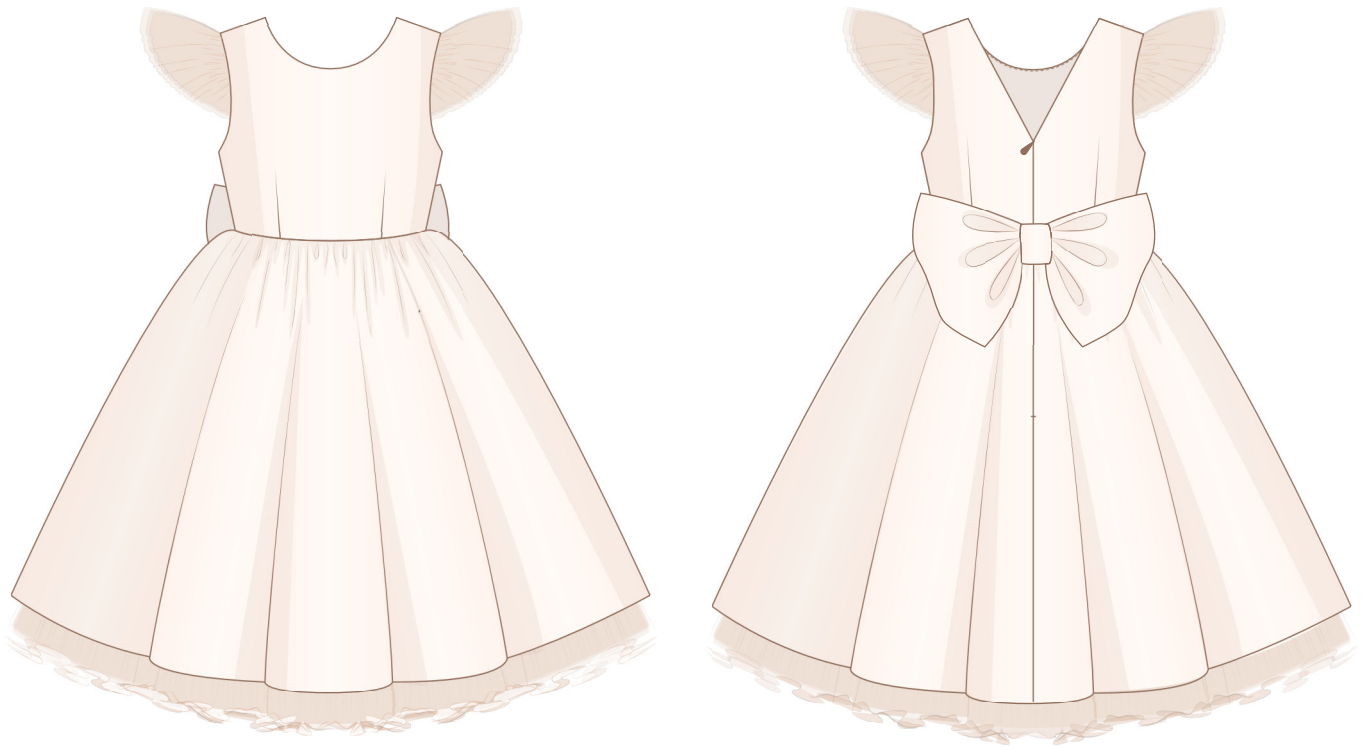


Back in 2016, when I was working on my first set of sewing instructions, I was trying to write them in such a way that even a complete beginner could easily understand and use them to create their very first garment. These instructions laid the foundation for the Vikisews brand, its vision and its mission. I wanted to create modern patterns with the utmost detailed and clear instructions.

Now, with each new collection we are constantly improving our instructions, amending them and adding more relevant details. By the time the final product reaches you, our drafters, correctors, and editors would have spent weeks perfecting every word and every photograph. If you compile a few of our instructions together, you will get a sewing manual that will assist you in sewing all kinds of garments at any difficulty level.

And I would be very happy if these instructions helped you to turn your hobby into a lifelong passion... Enjoy the process! Create your ultimate dream wardrobe! Wear your garments proudly for years to come!

If you have any questions, please contact us at [info@vikisews.com](mailto:info@vikisews.com) — we are always there to help.



## ANGELINE PATTERN DESCRIPTION

---

Angeline is a semi-fitted, lined dress with a fit-and-flare silhouette and a petticoat. The bodice is shaped with front and back waist darts. It has a round neckline at the front and a V-shaped neckline at the back. The dress has a waist seam that sits above the natural waistline and a full gathered skirt. The short flutter sleeves are made of tulle and are gathered along the sleeve cap. The dress closes with an invisible zipper in the center back seam. The back also features a decorative detachable bow. The petticoat is trimmed with tulle ruffles and is pleated at the waist. The petticoat is longer than the skirt by the width of the ruffle.



## IMPORTANT!

---

The contents of this pattern are copyright protected and belong exclusively to Vikisews. You may use Vikisews patterns for personal use. It is prohibited to share Vikisews patterns and instructions with third parties, as well as to publish patterns and instructions online for public access. **Non-compliance with the mentioned rules is a violation of the US copyright law and may result in civil liability and criminal prosecution.**

You may use Vikisews patterns for commercial use, to sew custom-made garments and/or create fashion collections, on the condition that the patterns are solely used in a manufacturing setting and are not further shared with individuals.

# TOTAL EASE ALLOWANCE

	Chest ease	Waistline ease (estimated)	Hipline ease (estimated for lining)
cm	3.1–2.8	2.5–2.8	31.1–33.6
inches	1 1/4–1 1/8	1–1 1/8	12 1/4–13 1/4

# GARMENT LENGTH, SLEEVE LENGTH

Height, cm	Back length from waist down including ruffle (estimated), cm	Sleeve length (estimated), cm
80	37	5.2
86	40.2	5.5
92	43.5	5.8
98	45	6.1
104	48.3	6.4
110	51.6	6.7
116	54.9	7
122	58.2	7.3
128	61.5	7.6
134	66	7.9
140	72.5	8.2

Height, in	Back length from waist down including ruffle (estimated), in	Sleeve length (estimated), in
31.5	14 5/8	2
33.75	15 7/8	2 1/8
36.25	17 1/8	2 1/4
38.5	17 3/4	2 3/8
41	19	2 1/2
43.25	20 3/8	2 5/8
45.5	21 5/8	2 3/4
48	22 7/8	2 7/8
50.5	24 1/4	3
52.75	26	3 1/8
55	28 1/2	3 1/4

# TOOLS AND EQUIPMENT

---

- sewing machine for construction
- overlocker for finishing raw edges. This may be replaced with a stretch overlock stitch or a zigzag stitch on the sewing machine (overlock or zigzag stitch width 2–3 mm, stitch length 2.5 mm)
- stitch-in-the-ditch foot for the sewing machine (optional)
- invisible zipper foot for the sewing machine
- one-sided foot for the sewing machine.

## PATTERN PIECES LIST

---

### 1. From main fabric:

- front bodice – cut 1 on fold
- back bodice – cut 2
- front skirt – cut 1
- back skirt – cut 2
- bow – cut 1
- bow band – cut 1.

**IMPORTANT!** Don't forget to transfer all pattern markings and notches onto the fabric.

### 2. From lining fabric:

- front bodice – cut 1 on fold
- back bodice – cut 2
- front skirt lining – cut 1 on fold
- back skirt lining – cut 2.

### 3. From interfacing:

- front bodice – cut 1 on fold
- back bodice – cut 2.

### 4. From tulle:

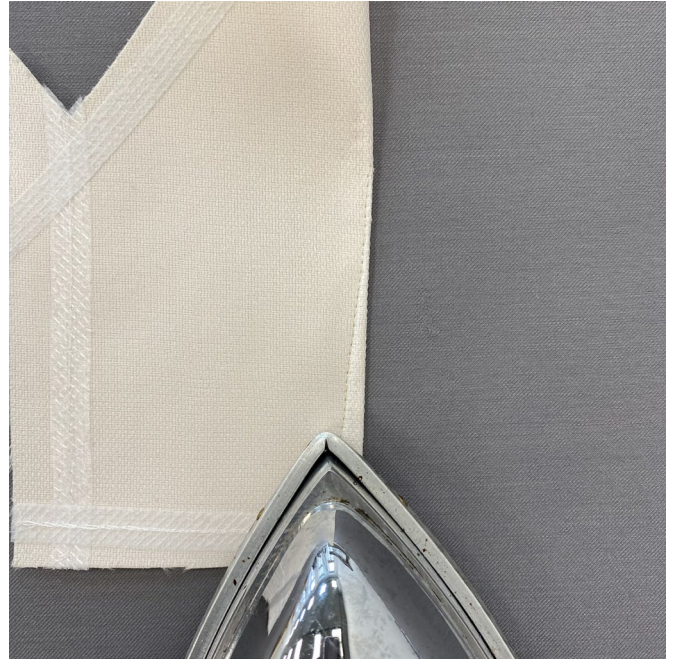
- sleeve – cut 8.

**Attention!** Cut the ruffle using the provided template a certain number of times. The ruffle length is determined by the chosen height and is made up of two pieces (layers). The table below lists how many times the template should be used to achieve the necessary length of each ruffle.





Press the darts flat.



Press the darts toward the center of the pieces.

**Attention!** Make sure there are no visible dart imprints on the right side of the garment. To prevent imprints when pressing, slip a piece of thick paper between the seam allowance and the main garment piece.