

# FROM THE FOUNDER OF THE #VIKISEWS BRAND

---

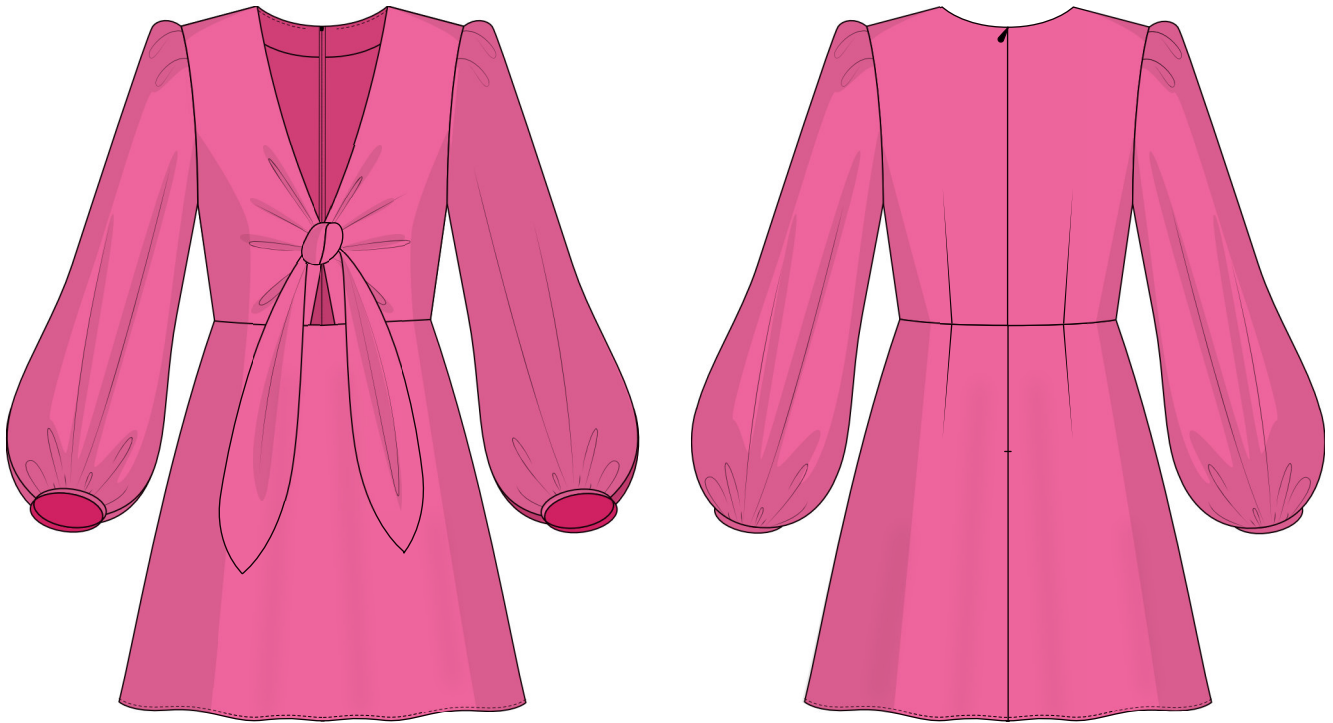


Back in 2016, when I was working on my first set of sewing instructions, I was trying to write them in such a way that even a complete beginner could easily understand and use them to create their very first garment. These instructions laid the foundation for the Vikisews brand, its vision and its mission. I wanted to create modern patterns with the utmost detailed and clear instructions.

Now, with each new collection we are constantly improving our instructions, amending them and adding more relevant details. By the time the final product reaches you, our drafters, correctors, and editors would have spent weeks perfecting every word and every photograph. If you compile a few of our instructions together, you will get a sewing manual that will assist you in sewing all kinds of garments at any difficulty level.

And I would be very happy if these instructions helped you to turn your hobby into a lifelong passion... Enjoy the process! Create your ultimate dream wardrobe! Wear your garments proudly for years to come!

If you have any questions, please contact us at [info@vikisews.com](mailto:info@vikisews.com) — we are always there to help.



## TIMEYA PATTERN DESCRIPTION

---

Timeya is a close-fitting dress with an accentuated waist. It features a waist seam and a V-neck with grown-on ties and a waist cut-out detail at the front. The skirt is cut on the bias. The bust darts are transferred into the side seams. There are waist darts on the back of the bodice and skirt. The long set-in sleeves are pleated at the caps and gathered at the bottom with the binding finish. The dress fastens with an invisible zipper in the center back seam, and is above-knee length.



## IMPORTANT!

---

The contents of this pattern are copyright protected and belong exclusively to Vikisews. You may use Vikisews patterns for personal use. It is prohibited to share Vikisews patterns and instructions with third parties, as well as to publish patterns and instructions online for public access. **Non-compliance with the mentioned rules is a violation of the US copyright law and may result in civil liability and criminal prosecution.**

You may use Vikisews patterns for commercial use, to sew custom-made garments and/or create fashion collections, on the condition that the patterns are solely used in a manufacturing setting and are not further shared with individuals.

# TOTAL EASE ALLOWANCE

	Bust ease	Waistline ease	Hipline ease	Upper arm ease
cm	1.5–2.8	3.9	8.8–14.8	18.7–20.7
inches	5/8–1 1/8	1 1/2	3 1/2–5 7/8	7 3/8–8 1/8

# GARMENT LENGTH, SLEEVE LENGTH

Height, cm	Garment length at center back, cm	Sleeve length including sleeve binding, cm
1 (154–160)	74.1–75.9	52.1–51.9
2 (162–168)	80.1–81.9	54.9–55.1
3 (170–176)	87.6–89.4	57.9–58
4 (178–184)	93.6–95.4	60.6–60.9

Height, ft	Garment length at center back, in	Sleeve length including sleeve binding, in
1 (5'1"–5'3")	29 1/8–29 7/8	20 1/2–20 3/8
2 (5'4"–5'6")	31 1/2–32 1/4	21 5/8–21 3/4
3 (5'7"–5'9")	34 1/2–35 1/4	22 3/4–22 7/8
4 (5'10"–6'1")	36 7/8–37 1/2	23 7/8–24

# SUGGESTED FABRIC

To sew this dress, choose dress-weight fabrics with the following properties:

- moderately lightweight, pliable, soft, non-stretch or low-stretch, opaque
- the fiber content can include natural fibers (silk, cotton, linen), artificial fibers (viscose), blends (viscose + silk, wool + polyester, cotton + viscose, etc.), and synthetics (polyester, polyester + elastane)
- the following fabrics are recommended: dress-weight viscose, faux silk, silk, challis.

**Attention!** We do not recommend stretchy knit fabrics and crisp, structured fabrics (organza, cotton).

The dress in the photo is made of silk. The fabric is medium weight, fluid, soft and low-stretch. The fiber content is 100% silk. The fabric weight is 130 g/m<sup>2</sup>.

# PATTERN PIECES LIST

---

## 1. From main fabric:

- front bodice — cut 4 (2 main fabric + 2 lining)
- front skirt — cut 1
- back bodice — cut 2
- back skirt — cut 2
- sleeve — cut 2
- front waist facing — cut 1
- back neck facing — cut 2
- sleeve hem binding — cut 2

***IMPORTANT!** Don't forget to transfer all pattern markings and notches onto the fabric.*

## 2. From interfacing:

- front waist facing — cut 1
- back neck facing — cut 2

Cut two strips of interfacing, 2 cm (3/4") wide (length according to the pattern), to reinforce the shoulder edges, top edges of the back skirt and center back seam allowances for the invisible zipper. The interfacing strips should be cut on the cross grain (perpendicular to the selvedge).

# SEAM ALLOWANCES

---

All pattern pieces include seam allowances as follows:

- zipper seam allowance — 1.5 cm (5/8")
- all other edges — 1 cm (3/8").

Take this into account when laying out pattern pieces on the fabric.



Tie the thread ends into a knot at the dart apex and hide them in between the fabric layers using a hand-sewing needle.



Press the darts flat.



Press the darts' seam allowances towards the center seams of the back bodice and back skirt respectively. Press and steam to shrink out the ease at the dart point.

Insert a piece of cardboard underneath the dart seam allowance to avoid leaving the dart imprint on the right side of the garment.