

FROM THE FOUNDER OF THE #VIKISEWS BRAND

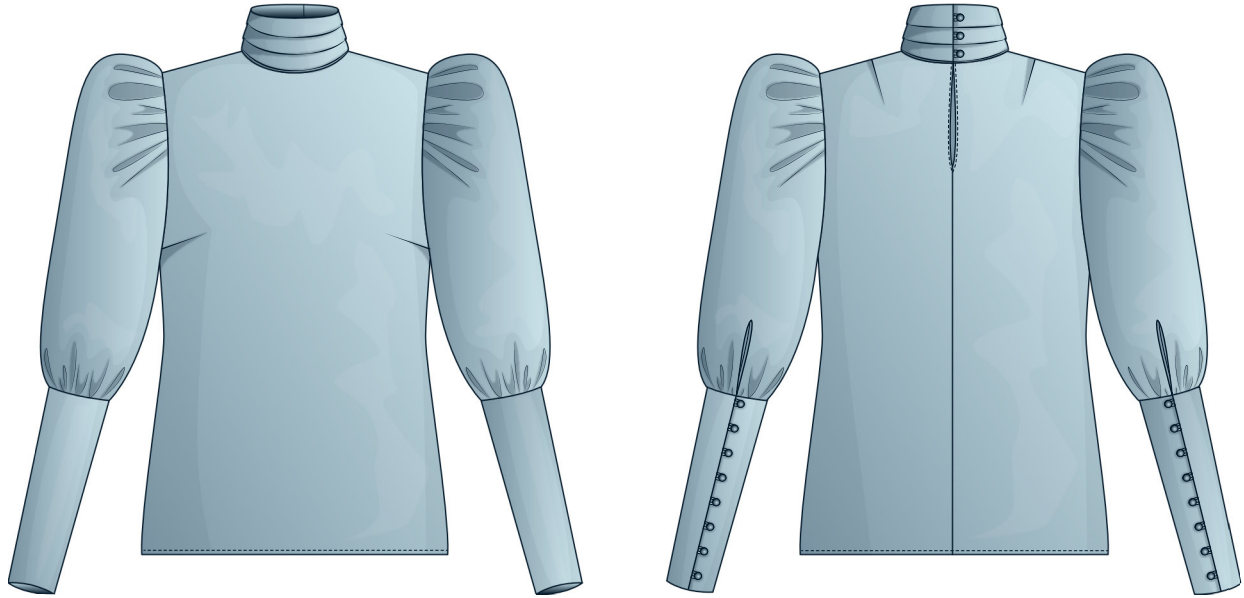


Back in 2016, when I was working on my first set of sewing instructions, I was trying to write them in such a way that even a complete beginner could easily understand and use them to create their very first garment. These instructions laid the foundation for the Vikisews brand, its vision and its mission. I wanted to create modern patterns with the most detailed and clear instructions.

Now, with each new collection we are constantly improving our instructions, amending them and adding more relevant details. By the time the final product reaches you, our drafters, correctors, and editors would have spent weeks perfecting every word and every photograph. If you compile a few of our instructions together, you will get a sewing manual that will assist you in sewing all kinds of garments at any difficulty level.

And I would be very happy if these instructions helped you to turn your hobby into a lifelong passion... Enjoy the process! Create your ultimate dream wardrobe! Wear your garments proudly for years to come!

If you have any questions, please contact us at info@vikisews.com - we are always there to help.



NITZAN PATTERN DESCRIPTION

Nitzan is a semi-fitted blouse with a straight silhouette and a gentle shaping at the sides. The front features bust darts, and the back features shoulder darts as well as a center back seam with a finished opening at the top for the fastening. The shoulder line is accentuated with shoulder pads and optional sleeve heads. Nitzan features a tall stand collar with horizontal draped pleats. The collar fastens with rouleau loops and buttons. The long set-in sleeves have lots of volume thanks to a generous gathering at the cap and a smaller gathering at the bottom. The sleeves are finished with long cuffs that fasten with rouleau loops and buttons. Nitzan is below-hip length.



IMPORTANT!

The contents of this pattern are copyright protected and belong exclusively to Vikisews. You may use Vikisews patterns for personal use. It is prohibited to share Vikisews patterns and instructions with third parties, as well as to publish patterns and instructions online for public access. **Non-compliance with the mentioned rules is a violation of the US copyright law and may result in civil liability and criminal prosecution.**

You may use Vikisews patterns for commercial use, to sew custom-made garments and/or create fashion collections, on the condition that the patterns are solely used in a manufacturing setting and are not further shared with individuals.

TOTAL EASE ALLOWANCE

	Bust ease	Waistline ease	Hipline ease	Upper arm ease
cm	12.8	28.6	11.8	24.2–29.3
inches	5	11 1/4	4 5/8	9 1/2–11 1/2

GARMENT LENGTH, SLEEVE LENGTH

Height, cm	Back length, cm	Sleeve length, cm
1 (154-160)	57.9-59.9	59.8-61.4
2 (162-168)	60.9-62.7	61.8-63.4
3 (170-176)	63.9-65.7	63.8-65.4
4 (178-184)	65.8-67.4	65.8-67.4
Height, ft	Back length, in	Sleeve length, in
1 (5'1" - 5'3")	22 3/4–23 5/8	23 1/2–24 1/8
2 (5'4" - 5'6")	24–24 5/8	24 3/8–25
3 (5'7" - 5'9")	25 1/8–25 7/8	25 1/8–25 3/4
4 (5'10" - 6'1")	25 7/8–26 1/2	25 7/8–26 1/2

SUGGESTED FABRIC

To sew this blouse, choose woven fabrics with the following properties:

- Lightweight, with good drape, soft, non-stretch or with very little stretch, opaque or slightly sheer
- The fiber content can include natural fibers (silk, cotton), artificial (viscose), blends (cotton + silk, cotton + viscose, etc) and synthetic (polyester, polyester + elastane)
- The following fabrics are recommended: artificial silk, silk, viscose or silk crepe, atlas

Attention! We do not recommend stretchy knits and lightweight sheer fabrics (chiffon, organza, stretch lace).

The blouse in the photo is made of artificial silk. This fabric is lightweight, soft, has good drape and very little stretch. The fiber content is 100% polyester.

TOOLS AND EQUIPMENT

- Sewing machine for construction
- Overlocker for finishing raw edges. This may be replaced with a stretch overlock stitch or a zigzag stitch on the sewing machine (overlock or zigzag stitch width 2-3mm, stitch length 2.5mm)
- Loop turner (may be replaced with a large-eyed needle)
- Press or other tool to make fabric covered buttons

PATTERN PIECES LIST

1. From main fabric:

- Front — cut 1 on fold
- Back — cut 2
- Sleeve — cut 2
- Stand collar — cut 2
- Upper stand collar — cut 1
- Cuff — cut 4
- Sleeve placket binding - cut 1
- Rouleau strap for button loops - cut 2

***IMPORTANT!** Don't forget to transfer all pattern markings and notches onto the fabric.*

2. From interfacing:

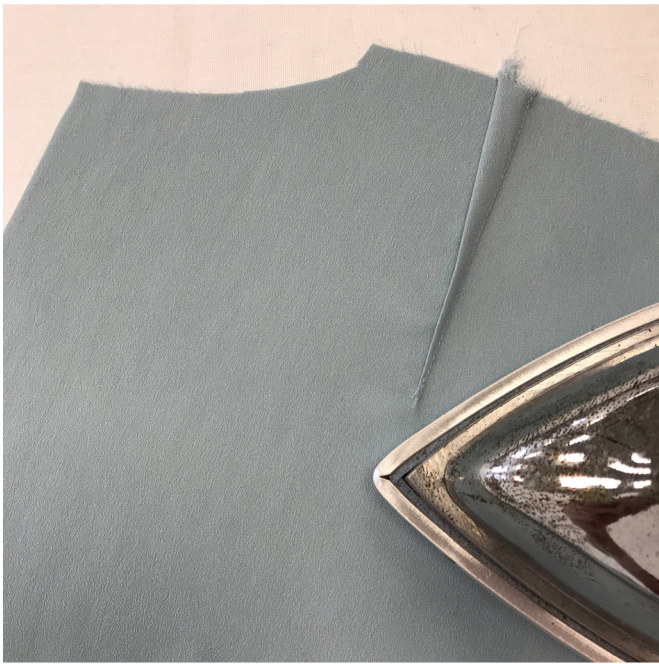
- Cuff - cut 4
- Stand collar - cut 2

SEAM ALLOWANCES

All pattern pieces include the following seam allowances:

- Garment hem - 1.5cm (5/8")
- All the other edges - 1cm (3/8")

Take this into account when laying out pattern pieces on the fabric.



Press and steam around the dart apex to shrink out the fullness.



Place the front and back pieces right sides together, align the side and shoulder edges, match all notches, and pin. Machine stitch with backstitches at both ends of each stitching line.



Press the side and shoulder seams flat, then overlock with the back piece facing up.

Press the seam allowances towards the front.

Also overlock the center back edges with the right side of the fabric facing up. Press the finished edges.