

# FROM THE FOUNDER OF THE #VIKISEWS BRAND

---



Back in 2016, when I was working on my first set of sewing instructions, I was trying to write them in such a way that even a complete beginner could easily understand and use them to create their very first garment. These instructions laid the foundation for the Vikisews brand, its vision and its mission. I wanted to create modern patterns with the utmost detailed and clear instructions.

Now, with each new collection we are constantly improving our instructions, amending them and adding more relevant details. By the time the final product reaches you, our drafters, correctors, and editors would have spent weeks perfecting every word and every photograph. If you compile a few of our instructions together, you will get a sewing manual that will assist you in sewing all kinds of garments at any difficulty level.

And I would be very happy if these instructions helped you to turn your hobby into a lifelong passion... Enjoy the process! Create your ultimate dream wardrobe! Wear your garments proudly for years to come!

If you have any questions, please contact us at [info@vikisews.com](mailto:info@vikisews.com) — we are always there to help.



## INGRID PATTERN DESCRIPTION

---

Ingrid is a semi-fitted shirt jacket with a straight silhouette. The front features a collar with collar stand, and patch pockets with pointed flaps that fasten with a button and buttonhole. Ingrid has a single-breasted button placket and its bust darts have been transferred to the side seams. The back features a yoke and a decorative button tab. Ingrid has a drop shoulder and shirt style two-piece sleeves embellished with a tab at the hem, which fastens with a button and buttonhole. The jacket's shirttail hem is finished with a facing, and decorative topstitching accentuates the pocket flaps, sleeve tabs, back yoke tab, button plackets, hem, and collar. Ingrid is neatly finished with a lining and is mid-thigh length.



## IMPORTANT!

---

The contents of this pattern are copyright protected and belong exclusively to Vikisews. You may use Vikisews patterns for personal use. It is prohibited to share Vikisews patterns and instructions with third parties, as well as to publish patterns and instructions online for public access. **Non-compliance with the mentioned rules is a violation of the US copyright law and may result in civil liability and criminal prosecution.**

You may use Vikisews patterns for commercial use, to sew custom-made garments and/or create fashion collections, on the condition that the patterns are solely used in a manufacturing setting and are not further shared with individuals.

## TOTAL WEARING EASE

Bust ease, cm	Waistline ease, cm	Hipline ease, cm	Upper arm ease, cm
23,6-25,1	44	18,1	9,9-12,1

## GARMENT LENGTH, SLEEVE LENGTH

Height, cm	Back length, cm	Sleeve length including shoulder width, cm
1 (154-160)	85,5	70,9-72,1
2 (162-168)	89,5	72,9-74,1
3 (170-176)	93,5	74,9-76,1
4 (178-184)	97,5	76,9-78,1

## SUGGESTED FABRIC

To sew this jacket, choose woven coating fabrics with the following properties:

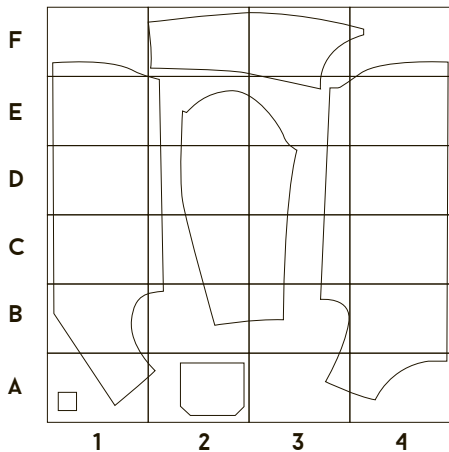
- Medium to heavy weight, structured;
- The fiber content can include natural fibers (wool), artificial (viscose, acrylic), blends (wool + polyester, wool + acrylic, wool + viscose), and synthetic (polyester, polyester + acrylic);
- The following fabrics are recommended: wool coating, cashmere, tweed, Melton wool.

**Attention!** We do not recommend stretchy or lightweight materials.

For the lining, we recommend artificial fibers (viscose), blends (viscose + elastane, viscose + polyester), or synthetic fibers (polyester, polyester + elastane).

The jacket on the photo is made with wool coating. This material is heavy weight and structured. The fiber content is 100% wool. The lining is 100% viscose.

## Lining pieces for sizes 46-52



## PATTERN PIECES LIST

### 1. From main fabric:

- Front – cut 2;
- Back – cut 1;
- Front facing – cut 2;
- Back neck facing – cut 1;
- Front hem facing – cut 2;
- Back hem facing – cut 1;
- Back yoke – cut 1;
- Upper collar – cut 1;
- Undercollar – cut 2;
- Collar stand – cut 2;
- Top sleeve – cut 2;
- Bottom sleeve – cut 2;
- Upper sleeve tab – cut 2;
- Lower sleeve tab – cut 2;
- Upper pocket flap – cut 2;
- Lower pocket flap – cut 2;
- Pocket – cut 2;
- Back yoke tab – cut 2.

### 3. From interfacing:

- Front – cut 2;
- Back – cut 1;
- Front facing – cut 2;
- Back neck facing – cut 1;
- Front hem facing – cut 2;
- Back hem facing – cut 1;
- Back yoke – cut 1;
- Upper collar – cut 1;
- Undercollar – cut 2;
- Collar stand – cut 2;
- Upper sleeve tab – cut 2;
- Lower sleeve tab – cut 2;
- Upper pocket flap – cut 2;
- Lower pocket flap – cut 2;
- Pocket – cut 2;
- Back yoke tab – cut 2.

### 2. From lining:

- Front lining – cut 2;
- Back lining – cut 1 on fold;
- Top sleeve lining – cut 2;
- Bottom sleeve lining – cut 2;
- Pocket lining – cut 2.

## IMPORTANT!

*Don't forget to transfer all pattern markings and notches onto the fabric.*

You will also need to cut out the following out of interfacing:

- Top and bottom sleeve cap (taken from pattern pieces);
- Top and bottom sleeve hem (8cm wide strips, length taken from pattern piece).

**Additionally apply fusible seam tape interfacing to the following edges:**

- Front and back yoke necklines;
- Front shoulder edges;
- Armscye on front, back yoke, and back;
- Front and back hem;
- Back neck facing shoulder edges;
- Back yoke tab edges (1 piece);
- Sides and outer edge on upper collar;
- Upper sleeve tab edges (2 pieces);
- Upper pocket flap edges (2 pieces);
- Pocket edges and foldline (2 pieces).





Trim the dart allowance down to 1cm, then press it open.



Place the pocket and the pocket lining pieces right sides together and align the top edges; pin, baste and stitch on the sewing machine.

Leave 4cm unstitched in the middle for turning the pocket right side out later.

Backstitch at the beginning and end.



Press the seam flat.



Press the seam allowance towards the lining.