

FROM THE FOUNDER OF THE #VIKISEWS BRAND



Back in 2016, when I was working on my first set of sewing instructions, I was trying to write them in such a way that even a complete beginner could easily understand and use them to create their very first garment. These instructions laid the foundation for the Vikisews brand, its vision and its mission. I wanted to create modern patterns with the most detailed and clear instructions.

Now, with each new collection we are constantly improving our instructions, amending them and adding more relevant details. By the time the final product reaches you, our drafters, correctors, and editors would have spent weeks perfecting every word and every photograph. If you compile a few of our instructions together, you will get a sewing manual that will assist you in sewing all kinds of garments at any difficulty level.

And I would be very happy if these instructions helped you to turn your hobby into a lifelong passion... Enjoy the process! Create your ultimate dream wardrobe! Wear your garments proudly for years to come!

If you have any questions, please contact us at info@vikisews.com - we are always there to help.



RIANA PATTERN DESCRIPTION

Riana is a semi-fitted blazer with a straight silhouette, cinched in at the waist by a tie belt. The bust dart has been transferred to the shoulder seam. The front features patch pockets with flaps and belt loops. The back features shoulder darts and one belt loop in the center. Riana has a classic notched lapel collar and long two-piece set-in sleeves. Riana has a center front fastening with two buttons and buttonholes. The blazer is partially lined and is below the hip length.



IMPORTANT!

The contents of this pattern are copyright protected and belong exclusively to Vikisews. You may use Vikisews patterns for personal use. It is prohibited to share Vikisews patterns and instructions with third parties, as well as to publish patterns and instructions online for public access. **Non-compliance with the mentioned rules is a violation of the US copyright law and may result in civil liability and criminal prosecution.**

You may use Vikisews patterns for commercial use, to sew custom-made garments and/or create fashion collections, on the condition that the patterns are solely used in a manufacturing setting and are not further shared with individuals.

TOTAL EASE ALLOWANCE

Bust ease, cm	Waistline ease, cm	Hipline ease, cm	Upper arm ease, cm
24	44.3	18.8	10-11

GARMENT LENGTH, SLEEVE LENGTH

Height, cm	Garment length at center back, cm	Sleeve length including shoulder width, cm
1 (154-160)	69.9-71.7	72.9-73.9
2 (162-168)	72.9-74.7	74.9-75.9
3 (170-176)	75.9-77.7	76.9-77.9
4 (178-184)	78.9-80.7	78.9-79.9

SUGGESTED FABRIC

Woven fabrics with the following properties are suitable for the Riana blazer:

- medium weight, soft and non-stretch
- the fibre content can include natural (wool, silk, cotton, linen), artificial (viscose), blends (wool + silk, wool + polyester, cotton + viscose, etc.) or synthetic (polyester, polyester + elastane)
- the following fabrics are recommended: linen, cotton, sateen, thin gabardine, denim

Attention! We do not recommend stretchy fabrics.

For lining choose natural (silk), artificial (viscose), blends (silk + elastane, viscose + elastane, viscose + polyester) or synthetic (polyester, polyester + elastane) fibres.

The blazer on the photo is made in linen suiting. This fabric is medium weight, soft and non-stretch. The fiber content is 75% linen + 25% viscose. The lining fiber content is 90% cotton + 10% viscose.

PATTERN PIECES LIST

1. Main fabric:

- Back – cut 1 on fold
- Front – cut 2
- Front facing – cut 2
- Top sleeve – cut 2
- Bottom sleeve – cut 2
- Upper collar – cut 1 on fold
- Undercollar – cut 2
- Collar stand – cut 2
- Patch pocket – cut 2
- Pocket top flap – cut 2
- Pocket bottom flap – cut 2
- Belt – cut 1
- Belt loop – cut 1

2. Lining:

- Front lining – cut 2
- Back lining – cut 1 on fold

NOTE! Don't forget to transfer all pattern markings and notches onto the fabric.

3. Interfacing:

- Front – cut 2
- Front facing – cut 2
- Upper collar – cut 1 on fold
- Undercollar – cut 2
- Collar stand – cut 2
- Pocket top flap – cut 2
- Belt – cut 1

Additionally interface the following:

- Top and bottom sleeve hem allowances (use 5cm wide interfacing strips, cut along the grainline, measure the length from the pattern piece)
- Back hem allowance (use 5cm wide interfacing strips, cut along the grainline, measure the length from the pattern piece)
- Top edge of the patch pockets (use 5cm wide interfacing strips, cut along the grainline, measure the length from the pattern piece)

Also interface using reinforced interfacing bias tape:

- neckline edges on the back and fronts
- armhole edges on the back and fronts
- front edge and the lapel roll line on the fronts
- outer edge and point edges of the undercollar
- pocket top flap edges (except the top edge)
- pocket fold line (fuse exactly under the foldline)

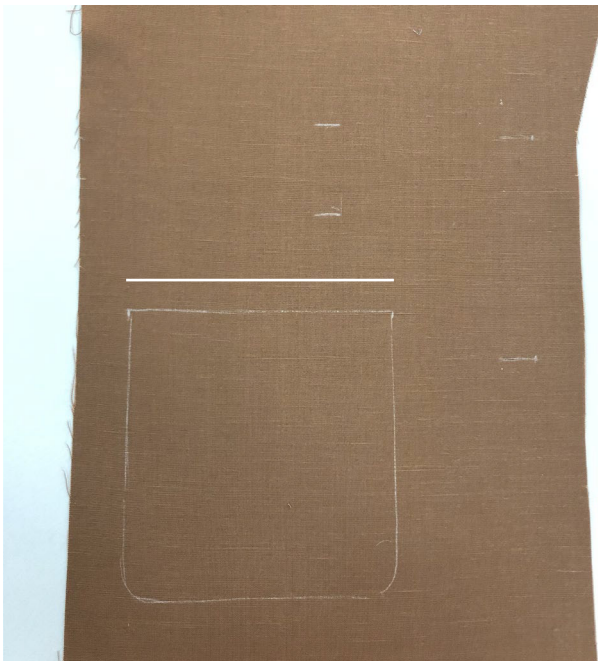
Reinforcing stitching line on the interfacing bias tape should be positioned at a distance of 9 mm from the edge.



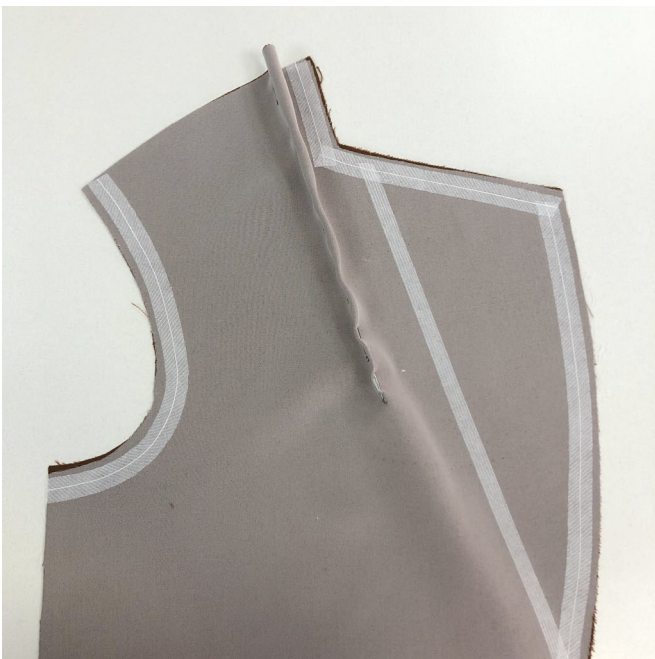
For fusing, put the sticky side of the interfacing on top of the back side of the fabric piece (or a section thereof) and press with the iron.

Avoid stretching the pieces with the iron. Your movements should be rather pressing than gliding: press and hold for a few seconds until one section is adhered and then press the next section.

You may use a cotton pressing cloth to protect your iron sole. Once the fusing is complete, leave the piece on a hard flat surface for 15 minutes for it to cool down.



Mark the position of the belt loops, pockets and flap stitching lines with chalk or fabric marker on the right side of the front pieces.



Pin, baste and stitch the darts on the wrong side of the fronts. Backstitch in the beginning of the stitching. Make thread knots at the end of the stitching line and hide the thread tails inside the dart bulk using a large-eyed needle.