

FROM THE FOUNDER OF THE #VIKISEWS BRAND

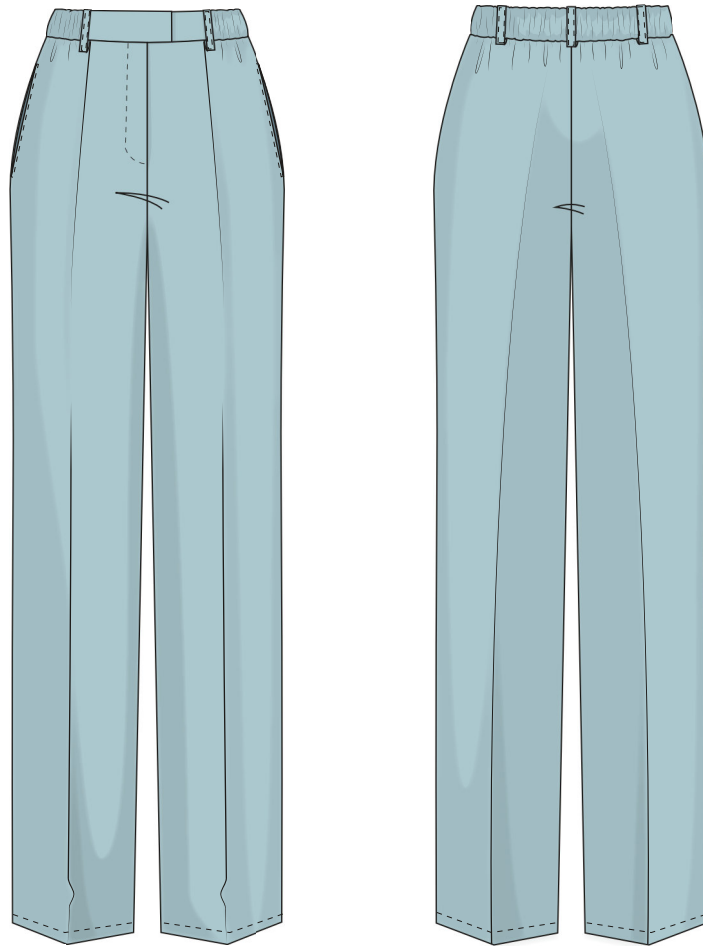


Back in 2016, when I was working on my first set of sewing instructions, I was trying to write them in such a way that even a complete beginner could easily understand and use them to create their very first garment. These instructions laid the foundation for the Vikisews brand, its vision and its mission. I wanted to create modern patterns with the most detailed and clear instructions.

Now, with each new collection we are constantly improving our instructions, amending them and adding more relevant details. By the time the final product reaches you, our drafters, correctors, and editors would have spent weeks perfecting every word and every photograph. If you compile a few of our instructions together, you will get a sewing manual that will assist you in sewing all kinds of garments at any difficulty level.

And I would be very happy if these instructions helped you to turn your hobby into a lifelong passion... Enjoy the process! Create your ultimate dream wardrobe! Wear your garments proudly for years to come!

If you have any questions, please contact us at info@vikisews.com - we are always there to help.



JACQUELINE PATTERN DESCRIPTION

Jacqueline is a pair of classic trousers with a semi-slim straight fit. Pressed crease lines are found on the front and back of the trousers, on the front passing into pleats at the waist line. Trouser pockets are in the side seams. The trousers have a fly front zipper, elastic band in the back of the waistband and belt loops. Upper edge of the waistband is slightly lower than the natural waistline. Jacqueline trousers fasten with a button and buttonhole, overlapping waistband part fastens with a hook and a loop. The trousers are floor length.



IMPORTANT!

The contents of this pattern are copyright protected and belong exclusively to Vikisews. You may use Vikisews patterns for personal use. It is prohibited to share Vikisews patterns and instructions with third parties, as well as to publish patterns and instructions online for public access. **Non-compliance with the mentioned rules is a violation of the US copyright law and may result in civil liability and criminal prosecution.**

You may use Vikisews patterns for commercial use, to sew custom-made garments and/or create fashion collections, on the condition that the patterns are solely used in a manufacturing setting and are not further shared with individuals.

TOTAL EASE ALLOWANCE

Waistline ease, cm	Hipline ease, cm
5	13

GARMENT LENGTH

Side seam length including waistband

Height, cm	Garment length, cm
1 (154-160)	110
2 (162-168)	114
3 (170-176)	118
4 (178-184)	122

Trousers bottom width, elastic band length, cm

Size	34	36	38	40	42	44	46	48	50	52
Trousers bottom width	27.7	28.2	28.7	29.2	29.7	30.2	30.7	31.2	31.7	32.2
Elastic band length	44	47	50	53	56	60	62	66	69	72

SUGGESTED FABRIC

Woven fabrics with the following properties are suitable for the Jacqueline Trousers:

- Medium weight, with good drape, breathable, soft and non-stretch or with very little stretch, opaque
- the fibre content can include natural (wool, silk, linen), artificial (viscose), blends (wool + silk, wool + polyester, cotton + viscose, etc.) or synthetic (polyester, polyester + elastane)
- the following fabrics are recommended: dress-weight wool, gabardine, silk, cupro, silk velvet.

Attention! We do not recommend very stretchy fabrics (knits) and lightweight sheer fabrics (chiffon, organza, knit lace). The garment on the photo is made of cupro fabric. This fabric is medium weight, has good drape, is soft and non-elastic. The fiber content is 100% cupro.

PATTERN PIECES LIST

1. Main fabric:

- Front leg – cut 2
- Back leg – cut 2
- Fly shield – cut 1 on fold
- Belt loops (5 pcs) – cut 1
- Pocket bag – cut 4
- Right front waistband – cut 1
- Left front waistband – cut 1
- Back waistband – cut 1

***NOTE!** Don't forget to transfer all pattern markings and notches onto the fabric.*

2. Interfacing:

- Right front waistband – cut 1
- Left front waistband – cut 1
- Back waistband – cut 1. Only interface for lightweight materials like soft silk for example.

Also cut 2 strips of interfacing 1,5 cm wide to interface the pocket opening. Interfacing grainline on the strips runs along the long edge (along the selvedge).

SEAM ALLOWANCES

Pattern pieces already include the following seam allowances:

- hem allowance - 4 cm
- all other edges – 1 cm

Please consider this when laying out pattern pieces on the fabric.



Press crease lines along hand stitches.



Put the pocket bag on top of the front leg right sides together. Align side seams and notches on the pocket opening. Pin and baste if necessary. Stitch the pocket opening seam on the sewing machine. Do not forget to tack at the beginning and end of the stitching.



Press the seam and then press open seam allowances.