

FROM THE FOUNDER OF THE #VIKISEWS BRAND

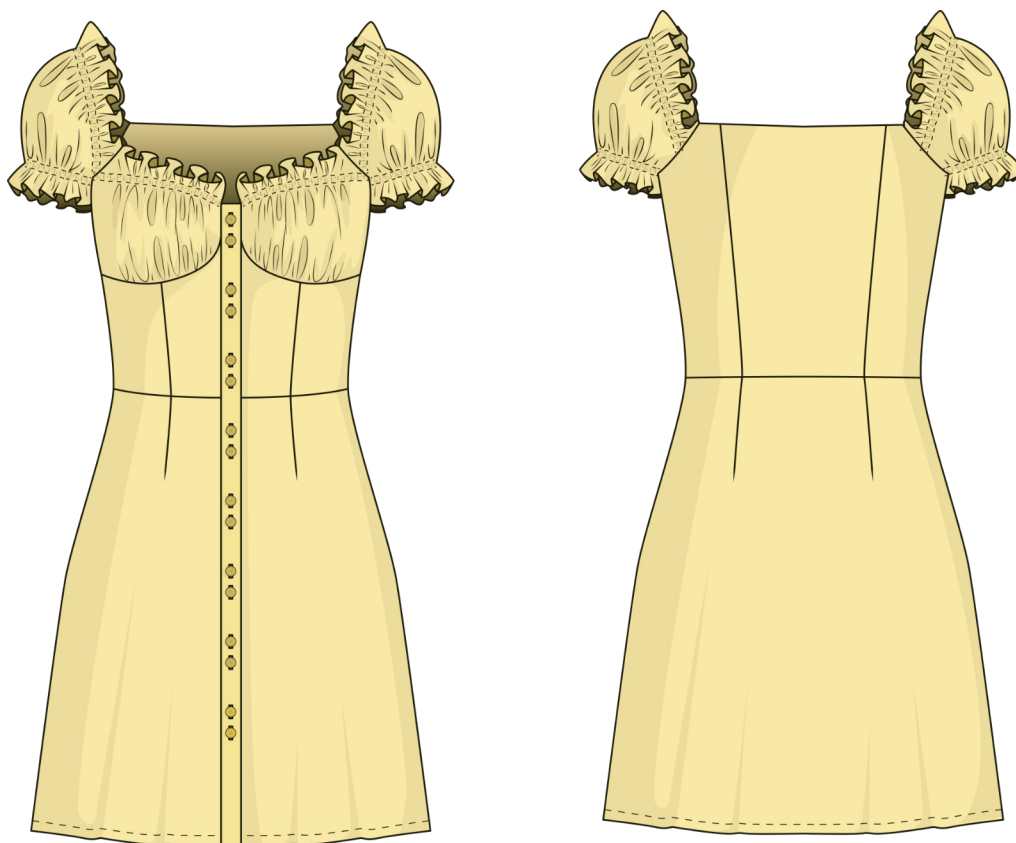


Back in 2016, when I was working on my first sewing instructions, I was trying to write them in such a way that even a complete beginner would be able to understand and create their first garment. These instructions laid the foundation of the Vikisews brand, its vision and mission. I wanted to create modern patterns with the most detailed and clear instructions.

With each new collection, we're constantly improving our instructions: adding more details, removing redundancies. Before they reach you, our drafters, correctors, and editors spend weeks working on every word and every photograph. If you put a few instructions together, you'll get a sewing manual that will assist you in sewing all kinds of garments of any difficulty level.

And I'll be very happy if these instructions help you to grow a small hobby into a lifelong passion. Enjoy the process. Create your ideal and effective wardrobe. Wear your garments with pride and for years to come.

If you have any questions, do write to us at info@vikisews.com. We'll always help you.



ALEXIA PATTERN DESCRIPTION

Alexia is a close fitting dress with an accentuated waist. It features a waist seam and separate yokes on the top front with gathering on the bottom and an elasticated channel on top. The waist darts have been transferred into princess seams. The back also features vertical princess seams. Alexia fastens with buttons and buttonholes on the center front plackets. The short voluminous sleeves are half raglan and feature elasticated channels on the top and bottom to mirror the yokes. The top edge of the yokes as well as the top and bottom edges of the sleeves are finished with rolled hems. The bottom of the skirt is slightly flared, the front and back necklines are deep and wide. Alexia is above-knee length.



IMPORTANT!

The contents of this pattern are copyright protected and belong exclusively to Vikisews. You may use Vikisews patterns for personal use. It is prohibited to share Vikisews patterns and instructions with third parties, as well as to publish patterns and instructions online for public access. **Non-compliance with the mentioned rules is a violation of the US copyright law and may result in civil liability and criminal prosecution.**

You may use Vikisews patterns for commercial use, to sew custom-made garments and/or create fashion collections, on the condition that the patterns are solely used in a manufacturing setting and are not further shared with individuals.

TOTAL WEARING EASE

Bust ease, cm	Waistline ease, cm	Hipline ease, cm	Upper arm ease, cm
4.1-4.7	4.1-4.2	7.3-7.8	30.8-31.8

GARMENT LENGTH, SLEEVE LENGTH

Height, cm	Garment length at the back from waist down, cm	Sleeve length including part of shoulder, cm
1 (154-160)	42.2	19.1-23.8
2 (162-168)	46.2	20.1-23.9
3 (170-176)	50.2	21.1-24.3
4 (178-184)	54.2	21.6-25.0

SUGGESTED FABRIC

To sew this dress, choose woven fabrics with the following properties:

- Lightweight, with good drape, breathable, soft, non-stretch or with very little stretch, opaque
- The fiber content can include natural fibers (silk, cotton), artificial (viscose), blends (cotton + viscose, etc)
- The following fabrics are recommended: viscose, lightweight denim, challis, shirting, chintz, artificial silk, natural silk

Attention! We do not recommend stretchy knit materials and lightweight sheer fabrics (chiffon, organza, stretch lace).

The dress on the photo is made with viscose fabric. This fabric is medium weight, soft, has good drape and very little stretch. The fiber content is of viscose.

PATTERN PIECES LIST

1. From main fabric:

- Front yoke – cut 2
- Center front bodice - cut 2
- Side front bodice - cut 2
- Front skirt - cut 2
- Centre back bodice - cut 1 on fold
- Side back bodice - cut 2
- Back skirt - cut 1 on fold
- Sleeve - cut 2
- Back facing - cut 1 on fold
- Placket - cut 2
- Front bodice channel - cut 2
- Sleeve cap channel - cut 2
- Sleeve hem channel - cut 2

IMPORTANT! Don't forget to transfer all pattern markings and notches onto the fabric.

2. From interfacing:

- Placket - cut 2
- Back facing - cut 1 on fold

SEAM ALLOWANCES

All pattern pieces include 1cm seam allowances; the garment hem allowance is 2cm. Take this into account when laying out pattern pieces on the fabric.



Pin and baste the darts along the markings on the front and back skirt pieces. Stitch on the machine starting at the wide end and going towards the tip. Backstitch at the beginning of the stitching line and leave long thread tails at the end (5-7cm).



Using a hand sewing needle, hide the tails within the dart. Cut off excess thread.