

FROM THE FOUNDER OF THE #VIKISEWS BRAND



Back in 2016, when I was working on my first set of sewing instructions, I was trying to write them in such a way that even a complete beginner could easily understand and use them to create their very first garment. These instructions laid the foundation for the Vikisews brand, its vision and its mission. I wanted to create modern patterns with the utmost detailed and clear instructions.

Now, with each new collection we are constantly improving our instructions, amending them and adding more relevant details. By the time the final product reaches you, our drafters, correctors, and editors would have spent weeks perfecting every word and every photograph. If you compile a few of our instructions together, you will get a sewing manual that will assist you in sewing all kinds of garments at any difficulty level.

And I would be very happy if these instructions helped you to turn your hobby into a lifelong passion... Enjoy the process! Create your ultimate dream wardrobe! Wear your garments proudly for years to come!

If you have any questions, please contact us at info@vikisews.com – we are always there to help.



VERONICA PATTERN DESCRIPTION

Veronica is a sleeveless, tight fitting top with a rounded halter neckline, finished with bands around the neck and armholes. Veronica is hip length.



IMPORTANT!

The contents of this pattern are copyright protected and belong exclusively to Vikisews. You may use Vikisews patterns for personal use. It is prohibited to share Vikisews patterns and instructions with third parties, as well as to publish patterns and instructions online for public access. **Non-compliance with the mentioned rules is a violation of the US copyright law and may result in civil liability and criminal prosecution.**

You may use Vikisews patterns for commercial use, to sew custom-made garments and/or create fashion collections, on the condition that the patterns are solely used in a manufacturing setting and are not further shared with individuals.

TOTAL EASE ALLOWANCE

| Bust ease, cm | Waistline ease, cm | Hipline ease, cm |
|---------------|--------------------|------------------|
| -15.8 | -7.6 | -10.3 |

GARMENT LENGTH

| Height, cm | Back length, cm |
|-------------|-----------------|
| 1 (154–160) | 51.1 |
| 2 (162–168) | 54.1 |
| 3 (170–176) | 57.1 |
| 4 (178–184) | 60.1 |

SUGGESTED FABRIC

To sew this top, choose knit fabrics with the following properties:

- Soft, stretchy and very stretchy, with good recovery, smooth or textured
- The fiber content can include natural fibers (wool, cotton, silk, bamboo + cotton), artificial (viscose), blends (wool + elastane, cotton + polyester + nylon, cotton + elastane, cotton + spandex, bamboo + elastane, viscose + elastane), and synthetic (polyester + nylon + elastane, polyester + acrylic)
- The following fabrics are recommended: cotton jersey, rib knits, bamboo jersey, ITY knits, viscose jersey, spandex, sweater knits

Attention! The chosen material must contain elastane, lycra or spandex.

The top on the photo is made with rib knit. This fabric is medium weight, soft, and stretchy. The fiber content is a blend of 95% cotton and 5% elastane. The neck and armholes are finished with jersey.

PATTERN PIECES LIST

1. From main fabric:

- Front — cut 1 on fold
- Back — cut 1 on fold
- Neckband — cut 1
- Armhole band — cut 2

IMPORTANT! Don't forget to transfer all pattern markings and notches onto the fabric.

2. From interfacing:

- Front shoulder seam allowance

Interface the front shoulder seam allowances with 1cm strips of interfacing (measure the length according to pattern piece).

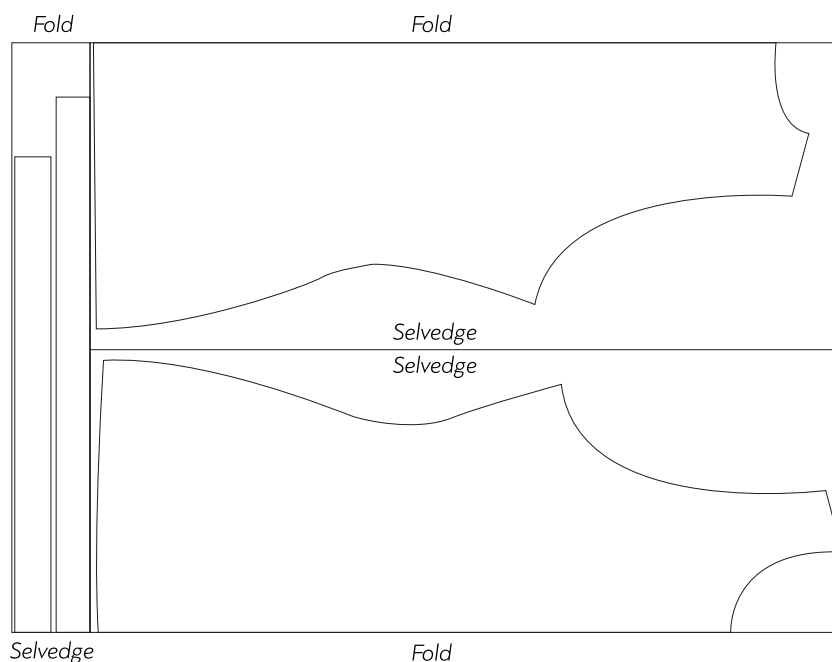
SEAM ALLOWANCES

All pattern pieces include 1cm seam allowances along all seams.

The hem allowance is 2cm. Take this into account when laying out pattern pieces on the fabric.

CUTTING LAYOUT

Main fabric, 110cm wide, cut in two parts,
for all sizes and heights, non-directional print

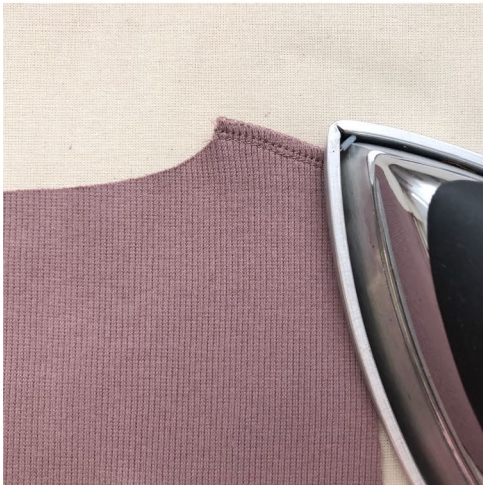


*First part is cut with two folds, for the front and back. Second part is cut with one fold, for the neckband and two armhole bands.

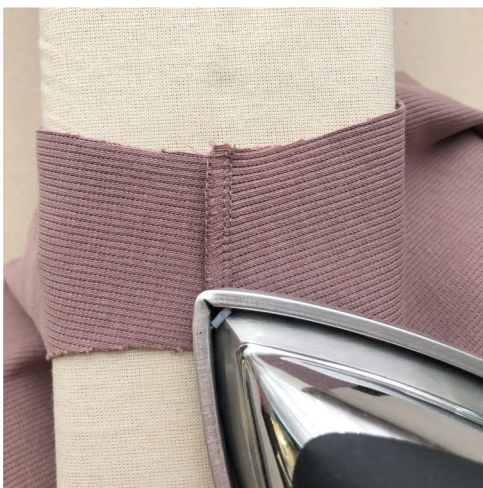


Place the front and back pieces right sides together along the shoulder and side seams. Pin and hand baste. Make sure to stretch the back side seam between the waist notch and the armhole to match the length of the front side seam.

Stitch the seams on the overlocker with the back side facing up. Stitch width is 7mm, thus trim off 3mm.



Press the shoulder seams flat.



Press the seam allowances towards the front.