

FROM THE FOUNDER OF THE #VIKISEWS BRAND



Back in 2016, when I was working on my first set of sewing instructions, I was trying to write them in such a way that even a complete beginner could easily understand and use them to create their very first garment. These instructions laid the foundation for the Vikisews brand, its vision and its mission. I wanted to create modern patterns with the most detailed and clear instructions.

Now, with each new collection we are constantly improving our instructions, amending them and adding more relevant details. By the time the final product reaches you, our drafters, correctors, and editors would have spent weeks perfecting every word and every photograph. If you compile a few of our instructions together, you will get a sewing manual that will assist you in sewing all kinds of garments at any difficulty level.

And I would be very happy if these instructions helped you to turn your hobby into a lifelong passion... Enjoy the process! Create your ultimate dream wardrobe! Wear your garments proudly for years to come!

If you have any questions, please contact us at info@vikisews.com - we are always there to help.



AMINA PATTERN DESCRIPTION

Amina is an oversized loose fit hoodie with a straight silhouette. The front features vertical design lines with built-in pockets. The hoodie has a dropped shoulder and long shirt sleeves with two decorative seams. The bottom of the sleeves is finished with cuffs. The hood is voluminous with a center seam and overlapping ends at the front neckline. The hood has a channel for a strip of twill tape threaded through the machine-sewn buttonholes. The bottom hem of the garment is finished with a waistband. The hoodie is below hip length.



IMPORTANT!

The contents of this pattern are copyright protected and belong exclusively to Vikisews. You may use Vikisews patterns for personal use. It is prohibited to share Vikisews patterns and instructions with third parties, as well as to publish patterns and instructions online for public access. **Non-compliance with the mentioned rules is a violation of the US copyright law and may result in civil liability and criminal prosecution.**

You may use Vikisews patterns for commercial use, to sew custom-made garments and/or create fashion collections, on the condition that the patterns are solely used in a manufacturing setting and are not further shared with individuals.

TOTAL EASE ALLOWANCE

Bust ease, cm	Waistline ease, cm	Hipline ease, cm	Upper arm ease, cm
55.1-71.1	73.3-89.3	39.2-55.2	29.6-35.5

GARMENT LENGTH, SLEEVE LENGTH

Height, cm	Center back length including waistband, cm	Sleeve length including shoulder width and cuff, cm
1 (154-160)	74.3	80.2-81.8
2 (162-168)	77.3	82.2-83.8
3 (170-176)	80.3	84.2-85.8
4 (178-184)	83.3	86.2-87.8

SUGGESTED FABRIC

To sew this hoodie, choose knit fabrics with the following properties:

- Medium weight, breathable, non-stretch or with very little stretch
- The fiber content can include natural fibers (wool, cotton), artificial (viscose), blends (wool + polyester, cotton + polyester, cotton + elastane, etc.), and synthetic (polyester, polyester + elastane)
- The following fabrics are recommended: sweatshirt fleece, double knit (heavy or medium weight), bulky knit fabrics

Attention! We do not recommend using lightweight sheer fabrics (chiffon, organza, stretch lace).

As an additional material for the waistband and cuffs we recommend using rib knits.

The hoodie in the photo is made with sweatshirt fleece fabric. This fabric is medium weight, soft and has very little stretch. The fiber content is a blend of viscose, polyester and elastane. The waistband and cuffs are made out of ribbing.

PATTERN PIECES LIST

1. From main fabric:

- Front - cut 1 on fold
- Front side - cut 2
- Back - cut 1 on fold
- Top sleeve - cut 2
- Bottom sleeve - cut 2
- Hood - cut 2
- Pocket bag - cut 4

IMPORTANT! Don't forget to transfer all pattern markings and notches onto the fabric.

2. From additional fabric:

- Cuff - cut 2
- Front waistband - cut 1 on fold
- Back waistband - cut 1 on fold

3. From interfacing:

- Pocket opening seam allowances. Strips of fusible interfacing, 3cm wide and 22cm long, are applied to the pocket opening seam allowances.
- A 2x3cm rectangle of interfacing for each of the buttonhole areas on the hood. The interfacing grainline is parallel to the long side (runs along the selvedge of the fusible material).

SEAM ALLOWANCES

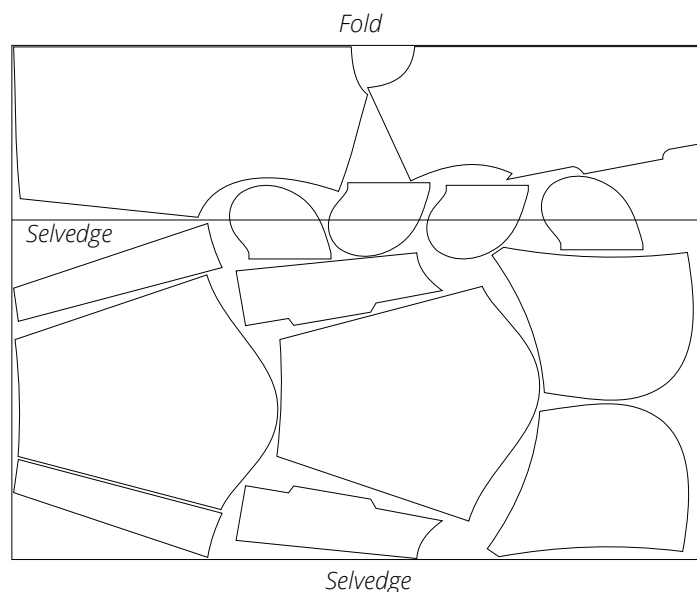
All pattern pieces include the following seam allowances:

- 1 cm for every edge

Take this into account when laying out pattern pieces on the fabric.

CUTTING LAYOUT

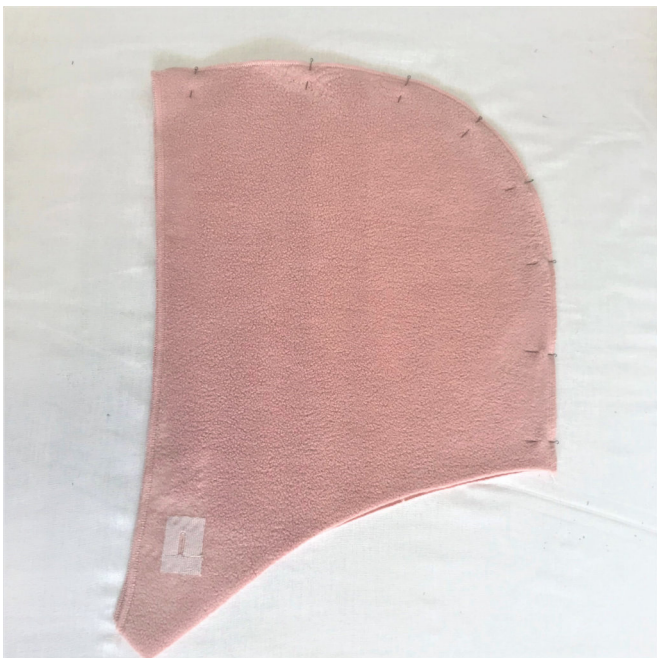
Main fabric, 160cm wide, with a partial fold, for sizes S-M in all heights,
with a non-directional print



Check for fit issues associated with individual features of the body (for example, an asymmetrical figure with shoulders at different levels, etc.) Verify garment volume, there should be enough ease and it should feel comfortable. After the fitting, mark changes symmetrically to both sides of the garment; if needed, baste once more and do another fitting.



Sew the buttonholes on the hood pieces one by one, following the marked lines. To do this, use the buttonhole presser foot on your sewing machine. After you're through, cut the buttonholes open with a seam ripper, but first place a stopper pin in the fabric at the beginning of the buttonhole.



Place the hood pieces right sides together, aligning the edges of the center seam. Pin, baste and overlock the seam on a 4-thread overlocker.

Use a 4-thread overlocker for this and other similar steps. The overlocker may be replaced with a stretch overlock stitch or a zigzag stitch on the sewing machine.

Steam press the center seam allowances of the hood, pressing them flat first, and then press to any side.