

FROM THE FOUNDER OF THE #VIKISEWS BRAND



Back in 2016, when I was working on my first set of sewing instructions, I was trying to write them in such a way that even a complete beginner could easily understand and use them to create their very first garment. These instructions laid the foundation for the Vikisews brand, its vision and its mission. I wanted to create modern patterns with the utmost detailed and clear instructions.

Now, with each new collection we are constantly improving our instructions, amending them and adding more relevant details. By the time the final product reaches you, our drafters, correctors, and editors would have spent weeks perfecting every word and every photograph. If you compile a few of our instructions together, you will get a sewing manual that will assist you in sewing all kinds of garments at any difficulty level.

And I would be very happy if these instructions helped you to turn your hobby into a lifelong passion... Enjoy the process! Create your ultimate dream wardrobe! Wear your garments proudly for years to come!

If you have any questions, please contact us at info@vikisews.com - we are always there to help.



NOLA PATTERN DESCRIPTION

Nola is a close-fitting dress with a trapeze silhouette. The front features a yoke gathered on the bottom and finished with a channel for ties on the top. The back has side panels as well as a shirred center panel. The skirt has a slight A-line shape. Nola has a short, voluminous sleeve with gathers along the shoulder and a channel for elastic at the hem. The front and back necklines are quite deep, and the dress is above knee length.



IMPORTANT!

The contents of this pattern are copyright protected and belong exclusively to Vikisews. You may use Vikisews patterns for personal use. It is prohibited to share Vikisews patterns and instructions with third parties, as well as to publish patterns and instructions online for public access. **Non-compliance with the mentioned rules is a violation of the US copyright law and may result in civil liability and criminal prosecution.**

You may use Vikisews patterns for commercial use, to sew custom-made garments and/or create fashion collections, on the condition that the patterns are solely used in a manufacturing setting and are not further shared with individuals.

TOTAL WEARING EASE

Bust ease, cm	Waistline ease, cm	Hipline ease, cm	Upper arm ease, cm
4,2-5,3	14,2-15,3	13,2-15,9	17,5

GARMENT LENGTH, SLEEVE LENGTH

Height, cm	Length of back from waist down (different for each size), cm	Sleeve length, cm
1 (154-160)	41-41,2	26,9-27,6
2 (162-168)	45-45,1	28-28,6
3 (170-176)	49-49,1	29-29,6
4 (178-184)	53-53,1	30-30,6

SUGGESTED FABRIC

To sew this dress, choose woven fabrics with the following properties:

- Light to medium weight, no stretch or very little stretch, soft with good drape, opaque;
- The fiber content can include natural fibers (silk, cotton), artificial (viscose), blends (cotton + viscose, silk + polyester, etc), and synthetic (polyester, polyester + elastane, etc);
- The following fabrics are recommended: natural or artificial silk, viscose poplin or rayon challis, crepe, lightweight atlas, chiffon.

Attention! We do not recommend stretchy knit materials.

The dress on the model is made with 100% silk. This fabric is lightweight, soft and non-stretchy.

PATTERN PIECES LIST

1. From main fabric:

1. Front skirt – cut 1 on fold
2. Top front bodice piece – cut 4
3. Front yoke – cut 1 on fold
4. Back skirt – cut 1 on fold
5. Center back bodice – cut 1 on fold
6. Side back bodice – cut 4
7. Sleeve – cut 2
8. Sleeve channel – cut 2
9. Tie for the channel – cut 2

IMPORTANT!

Don't forget to transfer all pattern markings and notches onto the fabric.

SEAM ALLOWANCES

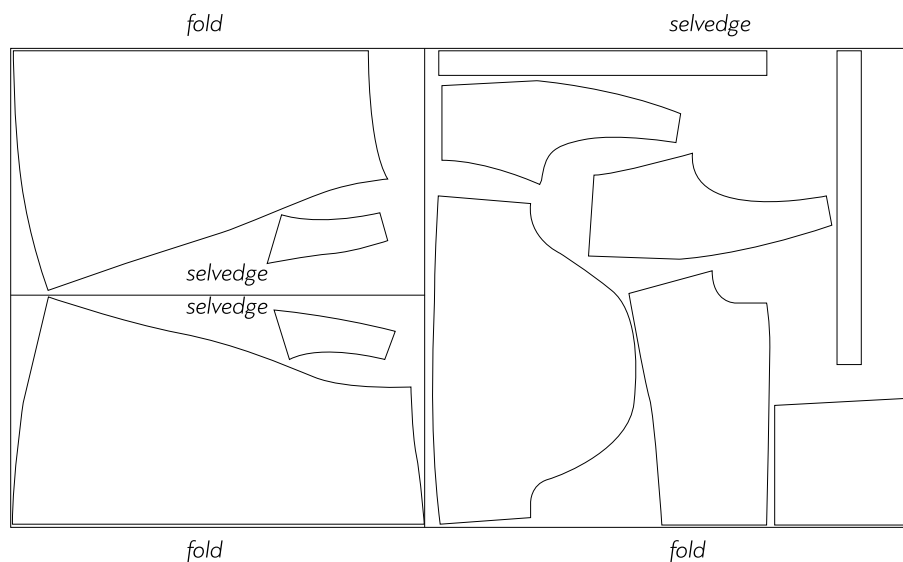
All pattern pieces include 1 cm seam allowances. Take this into account when laying out pattern pieces on the fabric.

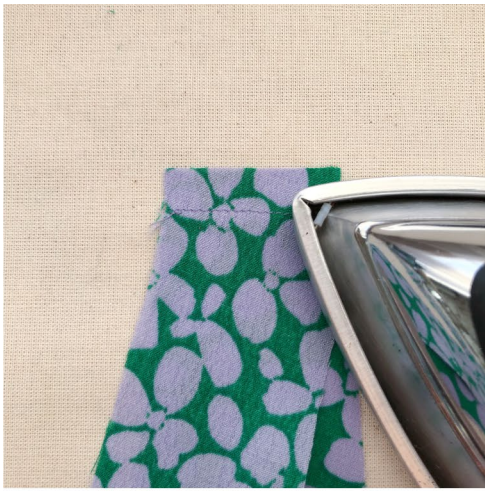
CUTTING LAYOUT

Main fabric, 140cm wide, cut in two parts for sizes 34-36 for all heights, with a directional print

1st part – with two folds

2nd part – with one fold





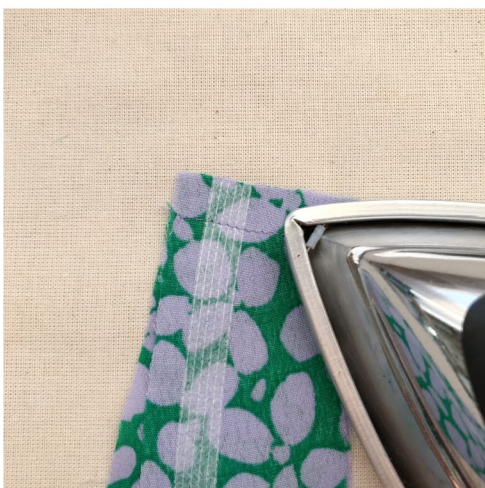
Press the seam flat.



Press the seam allowances open.



Place the outer top front bodice piece and the outer side back bodice piece right sides together. Align the shoulder edges, pin, baste and stitch on your sewing machine. Start and end with a backstitch.



Press the seam flat.