

# FROM THE FOUNDER OF THE #VIKISEWS BRAND

---

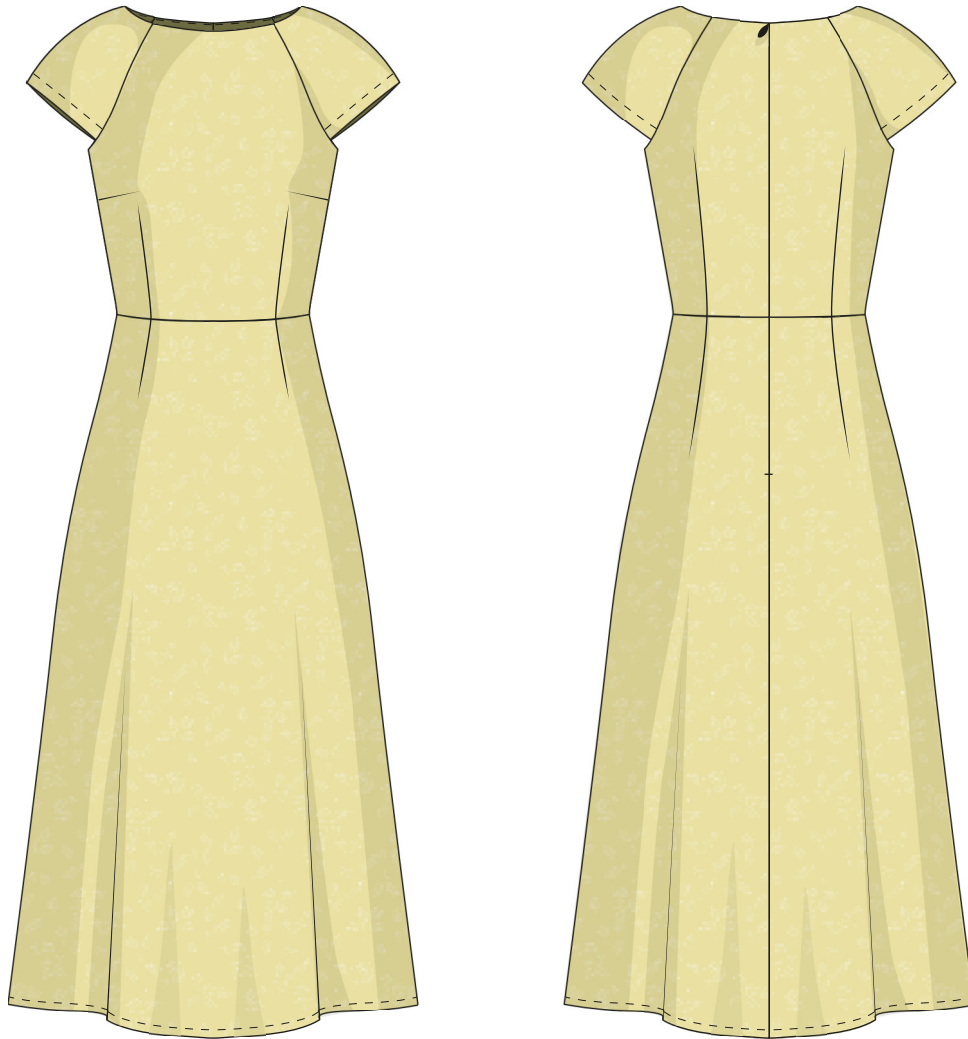


Back in 2016, when I was working on my first set of sewing instructions, I was trying to write them in such a way that even a complete beginner could easily understand and use them to create their very first garment. These instructions laid the foundation for the Vikisews brand, its vision and its mission. I wanted to create modern patterns with the most detailed and clear instructions.

Now, with each new collection we are constantly improving our instructions, amending them and adding more relevant details. By the time the final product reaches you, our drafters, correctors, and editors would have spent weeks perfecting every word and every photograph. If you compile a few of our instructions together, you will get a sewing manual that will assist you in sewing all kinds of garments at any difficulty level.

And I would be very happy if these instructions helped you to turn your hobby into a lifelong passion... Enjoy the process! Create your ultimate dream wardrobe! Wear your garments proudly for years to come!

If you have any questions, please contact us at [info@vikisews.com](mailto:info@vikisews.com) - we are always there to help.



## LEONIE PATTERN DESCRIPTION

---

Leonie is a close fitting dress with an accentuated waist. It features a slight A-line shape skirt, and a waist seam. The shaping on the front bodice is achieved with bust and waist darts. The bust darts have been transferred to the side seams. The shaping on the back bodice is achieved with waist darts and a center seam. The center back seam has an invisible zipper fastening. On the front and back bodice, Leonie features yokes whose shape resembles raglan sleeves. The dress has a slightly dropped shoulder line. Leonie is mid-calf length.



## IMPORTANT!

---

The contents of this pattern are copyright protected and belong exclusively to Vikisews. You may use Vikisews patterns for personal use. It is prohibited to share Vikisews patterns and instructions with third parties, as well as to publish patterns and instructions online for public access. **Non-compliance with the mentioned rules is a violation of the US copyright law and may result in civil liability and criminal prosecution.**

You may use Vikisews patterns for commercial use, to sew custom-made garments and/or create fashion collections, on the condition that the patterns are solely used in a manufacturing setting and are not further shared with individuals.

## TOTAL EASE ALLOWANCE

---

Bust ease, cm	Waistline ease, cm	Hipline ease, cm	Upper arm ease, cm
7.3-7.5	4.2-4.3	8-8.2	2.5

## GARMENT LENGTH, SLEEVE LENGTH

---

Height, cm	Garment length, cm	Shoulder seam length, cm
1 (154-160)	110.1-111.8	21-23.2
2 (162-168)	114.2-115.8	21.3-23.7
3 (170-176)	118.1-119,7	22-24.2
4 (178-184)	122-123.7	22,6-24.7

## SUGGESTED FABRIC

---

To sew this dress, choose dress-weight fabrics with the following properties:

- light to medium weight, with good drape, breathable, soft, non-stretch or with little stretch, opaque
- the fabric content can include natural (silk, cotton, linen), artificial (viscose), blends (silk + cotton, cotton + viscose, etc.), and synthetic fibers (polyester, polyester + elastane)
- the following fabrics are recommended: dress-weight denim, challis, modal, dress-weight viscose, crepe, silk with elastane

**Attention!** We do not recommend very stretchy knit materials (jersey fabric) and lightweight sheer fabrics (chiffon, organza, stretch lace).

The dress on the photo is made in viscose. This fabric is soft, non-stretch, and has good drape. The fiber content is 100% viscose.

# TOOLS AND EQUIPMENT

---

- sewing machine for construction
- serger for finishing raw edges. This may be replaced with a stretch overlock stitch or a zigzag stitch on the sewing machine (overlock or zigzag stitch width 2-3mm, stitch length 2.5mm)
- edge stitching foot for the sewing machine (optional)
- invisible zipper foot for the sewing machine

## PATTERN PIECES LIST

---

### 1. From main fabric:

- front bodice – cut 1 on fold
- back bodice – cut 2
- back yoke – cut 2
- front yoke – cut 2
- front skirt – cut 1 on fold
- back skirt – cut 2
- front neck facing – cut 1 on fold
- back neck facing – cut 2
- bias binding – cut 2

*Important! Don't forget to transfer all pattern markings and notches onto the fabric.*

### 2. From interfacing:

- front neck facing – cut 1 on fold
- back neck facing – cut 2

Additionally, cut 2 fusible interfacing strips, 2 cm wide, to interface the seam allowances of center seam on the back bodice and skirt pieces, where the invisible zipper will be inserted. The grainline of the interfacing should be parallel to the longer side of the strips (along the selvedge of the interfacing).

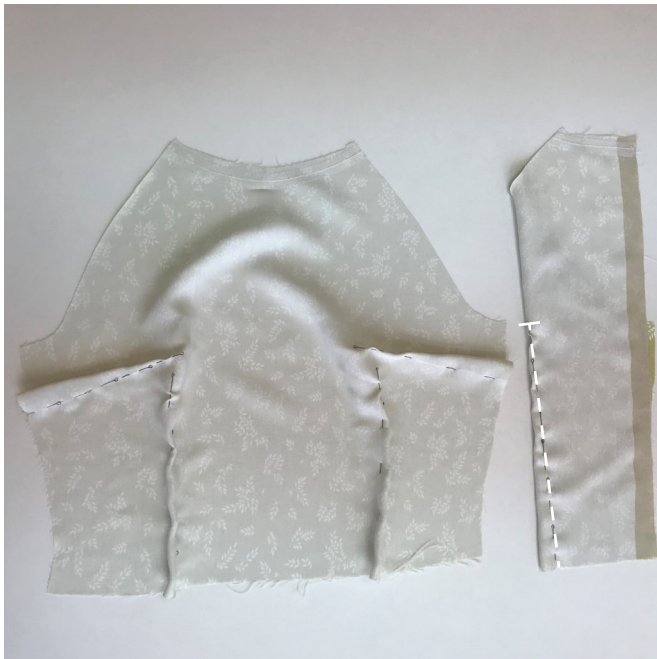
## SEAM ALLOWANCES

---

All pattern pieces include seam allowances as follows:

- garment hem allowance – 2 cm
- yoke hem allowance – 2 cm
- center seam – 1.5 cm
- all other seams – 1 cm

Take this into account when laying out pattern pieces on the fabric.



Working on the wrong side, align and pin the darts along the markings on the front and back bodice pieces. Do not forget to make a perpendicular mark at the dart point.

If needed, baste the darts 2-3 mm from the line marking the dart legs. It will help prevent machining over the basting stitches.

Machine the darts starting from the dart base (widest part of the dart) and finishing at the dart point (cross mark). Backstitch in the beginning and tie knots at the end of the stitching line.



Using the same technique, pin, baste, and machine the darts on the front and back skirt pieces.



Press the darts flat.