

FROM THE FOUNDER OF THE #VIKISEWS BRAND

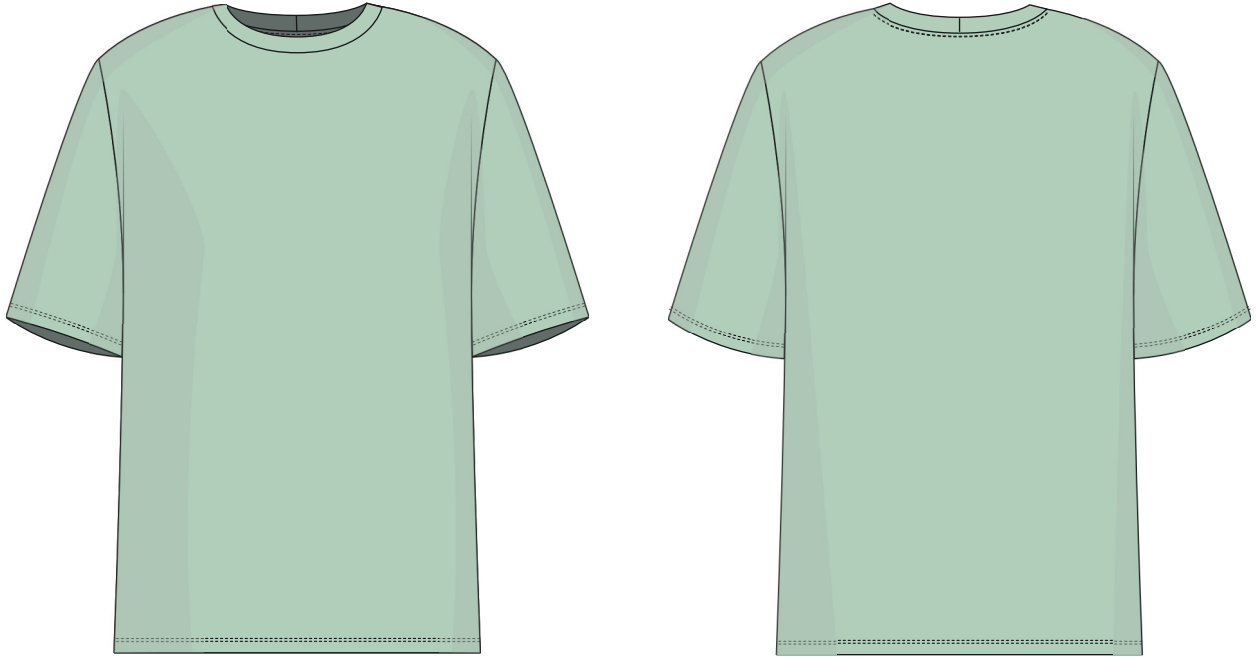


Back in 2016, when I was working on my first set of sewing instructions, I was trying to write them in such a way that even a complete beginner could easily understand and use them to create their very first garment. These instructions laid the foundation for the Vikisews brand, its vision and its mission. I wanted to create modern patterns with the utmost detailed and clear instructions.

Now, with each new collection we are constantly improving our instructions, amending them and adding more relevant details. By the time the final product reaches you, our drafters, correctors, and editors would have spent weeks perfecting every word and every photograph. If you compile a few of our instructions together, you will get a sewing manual that will assist you in sewing all kinds of garments at any difficulty level.

And I would be very happy if these instructions helped you to turn your hobby into a lifelong passion... Enjoy the process! Create your ultimate dream wardrobe! Wear your garments proudly for years to come!

If you have any questions, please contact us at info@vikisews.com — we are always there to help.



GELLA PATTERN DESCRIPTION

Gella is a loose-fitting t-shirt with a straight silhouette that tapers slightly toward the hem. It has a round neckline finished with a neckband. The shirt-style, above-elbow sleeves are sewn in flat. Gella is below-hip length.



IMPORTANT!

The contents of this pattern are copyright protected and belong exclusively to Vikisews. You may use Vikisews patterns for personal use. It is prohibited to share Vikisews patterns and instructions with third parties, as well as to publish patterns and instructions online for public access. **Non-compliance with the mentioned rules is a violation of the US copyright law and may result in civil liability and criminal prosecution.**

You may use Vikisews patterns for commercial use, to sew custom-made garments and/or create fashion collections, on the condition that the patterns are solely used in a manufacturing setting and are not further shared with individuals.

TOTAL EASE ALLOWANCE

	Bust ease	Waistline ease	Hipline ease	Upper arm ease
cm	32–20	51.7–38.9	25.2–11.1	18.4–12.5
inches	12 5/8–7 7/8	20 3/8–15 3/8	9 7/8–4 3/8	7 1/4–4 7/8

GARMENT LENGTH, SLEEVE LENGTH

Height, cm	Back length including neckband width, cm	Sleeve length including shoulder width, cm
1 (154–160)	69.5	38.6–40
2 (162–168)	71.5	39.6–41
3 (170–176)	73.5	40.7–42.1
4 (178–184)	75.5	41.7–43.1

Height, ft	Back length including neckband width, in	Sleeve length including shoulder width, in
1 (5'1"–5'3")	27 3/8	15 1/4–15 3/4
2 (5'4"–5'6")	28 1/8	15 5/8–16 1/8
3 (5'7"–5'9")	28 7/8	16–16 5/8
4 (5'10"–6'1")	29 3/4	16 3/8–17

SUGGESTED FABRIC

To sew this t-shirt, choose knit fabrics with the following properties:

- medium-weight, soft, low-stretch
- the fabric content can include natural fibers (cotton), artificial fibers (viscose), blends (cotton + polyester, cotton + elastane, etc.), and synthetics (polyester, polyester + elastane)
- the following fabrics are recommended: jersey knits, piqué, sweater knits, rib knits.

Attention! We do not recommend heavyweight, structured materials (French terry).

The garment in the photos is made of jersey. The fabric is medium-weight, soft, and low-stretch. The fiber content is 100% cotton. The fabric weight is 180 g/m².

TOOLS AND EQUIPMENT

- sewing machine for construction
- overlocker for construction and finishing raw edges. It can be replaced with a stretch overlock stitch or a zigzag stitch on the sewing machine (overlock or zigzag stitch width 2–3 mm, stitch length 2.5 mm)
- coverstitch or coverlock machine for finishing the garment hem and sleeve hems. If you don't have a coverstitch machine, it can be replaced with a twin needle on any regular sewing machine that can do a zigzag stitch.

***IMPORTANT!** We recommend using specialty needles when working with knit fabrics (for example, STRETCH, SUPER STRETCH, JERSEY, etc.). These are ballpoint needles, so they part the threads of the fabric you are stitching rather than piercing them.*

PATTERN PIECES LIST

From main fabric:

- front – cut 1 on fold
- back – cut 1 on fold
- sleeve – cut 2
- neckband – cut 1
- back neck binding – cut 1.

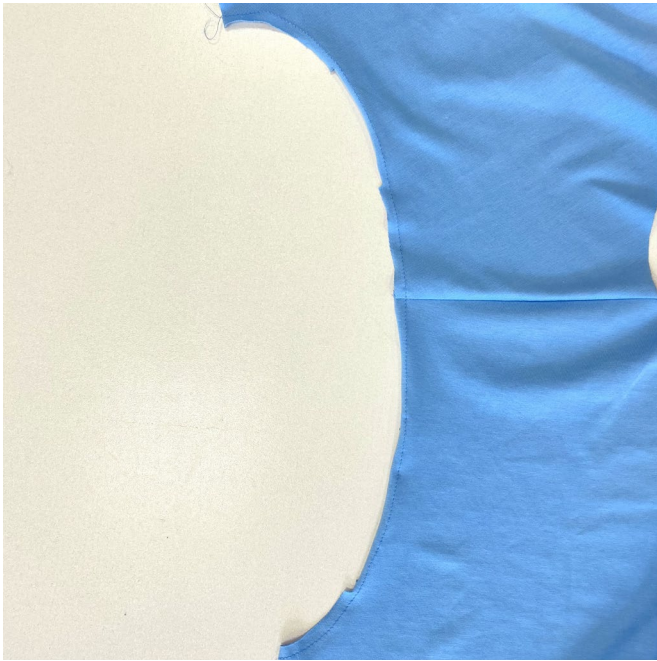
***IMPORTANT!** Don't forget to transfer all pattern markings and notches onto the fabric.*

SEAM ALLOWANCES

All pattern pieces include seam allowances as follows:

- garment hem allowance – 2 cm (3/4")
- sleeve hem allowance – 2 cm (3/4")
- all other edges – 1 cm (3/8").

Take this into account when laying out pattern pieces on the fabric.



Staystitch the armhole edges on the front and back pieces. Use a 3 mm stitch length and stitch at 7 mm (just over 1/4") from the edge.

Lay out the pieces and compare the staystitched edges with the corresponding paper pattern pieces to make sure they are not distorted. If necessary, pull on the staystitching threads to adjust the length.



Place the sleeve right sides together with the garment, aligning the sleeve cap and armhole edges. Align the center of the sleeve cap with the shoulder seam and match the rest of the notches. Pin in place.

Stitch on the overlocker, keeping the sleeve facing up.



Press the seam flat.