

FROM THE FOUNDER OF THE #VIKISEWS BRAND



Back in 2016, when I was working on my first set of sewing instructions, I was trying to write them in such a way that even a complete beginner could easily understand and use them to create their very first garment. These instructions laid the foundation for the Vikisews brand, its vision and its mission. I wanted to create modern patterns with the utmost detailed and clear instructions.

Now, with each new collection we are constantly improving our instructions, amending them and adding more relevant details. By the time the final product reaches you, our drafters, correctors, and editors would have spent weeks perfecting every word and every photograph. If you compile a few of our instructions together, you will get a sewing manual that will assist you in sewing all kinds of garments at any difficulty level.

And I would be very happy if these instructions helped you to turn your hobby into a lifelong passion... Enjoy the process! Create your ultimate dream wardrobe! Wear your garments proudly for years to come!

If you have any questions, please contact us at info@vikisews.com — we are always there to help.



SIENNA PATTERN DESCRIPTION

Sienna is a loose-fitting trapeze dress. The top edge is shaped, gathered, and finished with binding transitioning into straps. Sienna is above-knee length.



IMPORTANT!

The contents of this pattern are copyright protected and belong exclusively to Vikisews. You may use Vikisews patterns for personal use. It is prohibited to share Vikisews patterns and instructions with third parties, as well as to publish patterns and instructions online for public access. **Non-compliance with the mentioned rules is a violation of the US copyright law and may result in civil liability and criminal prosecution.**

You may use Vikisews patterns for commercial use, to sew custom-made garments and/or create fashion collections, on the condition that the patterns are solely used in a manufacturing setting and are not further shared with individuals.

TOTAL EASE ALLOWANCE

	Bust ease	Waistline ease	Hipline ease
cm	31.9–40.4	87.4–89.7	97.9–100.6
inches	12 1/2–15 7/8	34 3/8–35 3/8	38 1/2–39 5/8

GARMENT LENGTH

Height, cm	Back length from waist down, cm	Height, ft	Back length from waist down, in
1 (154–160)	41	1 (5'1"–5'3")	16 1/8
2 (162–168)	44	2 (5'4"–5'6")	17 3/8
3 (170–176)	47	3 (5'7"–5'9")	18 1/2
4 (178–184)	50	4 (5'10"–6'1")	19 5/8

SUGGESTED FABRIC

To sew this dress, choose dress-weight fabrics with the following properties:

- medium weight, pliable, soft, non-stretch, opaque
- the fiber content can include natural fibers (silk), artificial fibers (viscose), blends (silk + polyester, silk + viscose, etc.), and synthetics (polyester)
- the following fabrics are recommended: artificial silk, natural silk, satin

Attention! We do not recommend heavyweight structured fabrics and lightweight sheer fabrics.

The dress in the photo is made of artificial silk. The fabric is soft, with some bounce, non-structured, and double-sided. The fiber content is 100% polyester. The fabric weight is 190 g/m².

IMPORTANT! When purchasing fabric, please account for shrinkage and buy 5% more than required.

2. Matching thread — 1 spool for the sewing machine
3. Two strap slide adjusters, 1 cm (3/8") wide
4. Two strap rings for the ring tab, 1 cm (3/8") in diameter
5. Bra strap elastic, 1 cm (3/8") wide — 10 cm (3 7/8") for two ring tabs

TOOLS AND EQUIPMENT

- sewing machine for construction
- bias tape maker

PATTERN PIECES LIST

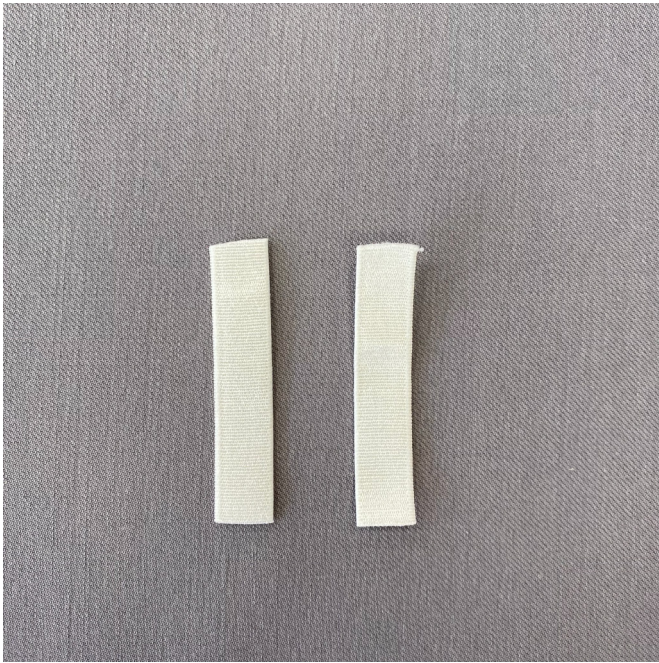
From main fabric:

- front — cut 1
- back — cut 1
- left binding — cut 1
- right binding — cut 1
- left strap — cut 1

IMPORTANT! Don't forget to transfer all pattern markings and notches onto the fabric.

SEAM ALLOWANCES

All pattern pieces include 1 cm (3/8") seam allowances.
Take this into account when laying out pattern pieces on the fabric.



Cut the elastic to make the ring tabs. The ring tabs should be 5 cm (2") long.



Thread the ring tab piece through the ring, align the edges, and pin.



Place the ring tabs to the top edge on the wrong side of the back piece. Verify the placement using the ring tab placement template and pin.