

FROM THE FOUNDER OF THE #VIKISEWS BRAND

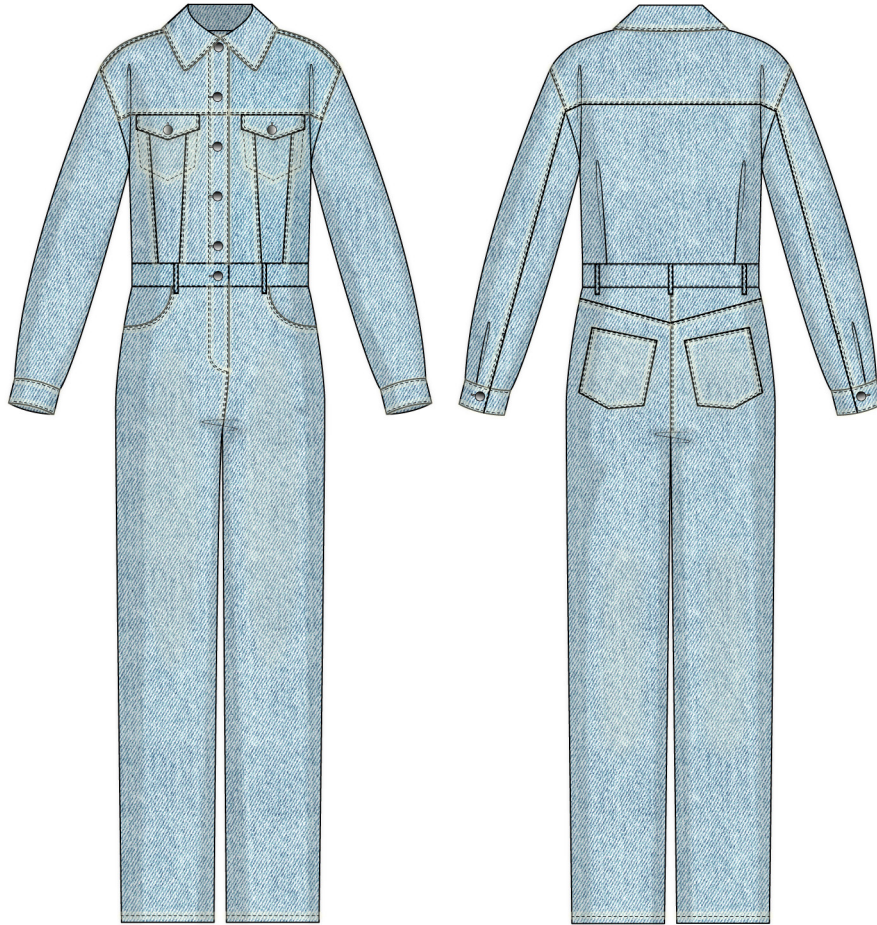


Back in 2016, when I was working on my first set of sewing instructions, I was trying to write them in such a way that even a complete beginner could easily understand and use them to create their very first garment. These instructions laid the foundation for the Vikisews brand, its vision and its mission. I wanted to create modern patterns with the utmost detailed and clear instructions.

Now, with each new collection we are constantly improving our instructions, amending them and adding more relevant details. By the time the final product reaches you, our drafters, correctors, and editors would have spent weeks perfecting every word and every photograph. If you compile a few of our instructions together, you will get a sewing manual that will assist you in sewing all kinds of garments at any difficulty level.

And I would be very happy if these instructions helped you to turn your hobby into a lifelong passion... Enjoy the process! Create your ultimate dream wardrobe! Wear your garments proudly for years to come!

If you have any questions, please contact us at info@vikisews.com — we are always there to help.



AMANI PATTERN DESCRIPTION

Amani is a semi-fitted, straight-cut jumpsuit featuring front and back shoulder yokes. The front bodice has princess seams and inner patch pockets with buttoned flaps. The back bodice is shaped with pleats. The jumpsuit has a waistband with belt loops. There are slash pockets on the front of the pants and yoke and patch pockets on the back. The pants close with a fly front zipper and a button, while the bodice closes with a grown-on center front button placket. The shirt-style collar has a separate collar stand. The jumpsuit has long, shirt-style, two-piece sleeves with cuffs that close with buttons and buttonholes. All seams are topstitched. The garment is floor-length.



IMPORTANT!

The contents of this pattern are copyright protected and belong exclusively to Vikisews. You may use Vikisews patterns for personal use. It is prohibited to share Vikisews patterns and instructions with third parties, as well as to publish patterns and instructions online for public access. **Non-compliance with the mentioned rules is a violation of the US copyright law and may result in civil liability and criminal prosecution.**

You may use Vikisews patterns for commercial use, to sew custom-made garments and/or create fashion collections, on the condition that the patterns are solely used in a manufacturing setting and are not further shared with individuals.

TOTAL EASE ALLOWANCE

	Bust ease	Waistline ease	Hipline ease	Upper arm ease
cm	29–33	26–30	14–18	17.5–19
inches	11 3/8–13	10 1/4–11 3/4	5 1/2–7 1/8	6 7/8–7 1/2

GARMENT LENGTH, SLEEVE LENGTH

Height, cm	Side seam length from waist down including waistband, cm	Sleeve length including shoulder width and cuff, cm
1 (154–160)	107	77–80
2 (162–168)	111	79–82
3 (170–176)	115	81–84
4 (178–184)	119	83–86

Height, ft	Side seam length from waist down including waistband, in	Sleeve length including shoulder width and cuff, in
1 (5'1"–5'3")	42 1/8	30 3/8–31 1/2
2 (5'4"–5'6")	43 3/4	31 1/8–32 1/4
3 (5'7"–5'9")	45 1/4	31 7/8–33 1/8
4 (5'10"–6'1")	46 7/8	32 5/8–33 7/8

FINISHED HEM WIDTH FOR ALL HEIGHTS

Size	XS	S	M	L	XL
cm	26.9	28.6	30.5	32.2	34
inches	10 5/8	11 1/4	12	12 5/8	13 3/8

SEAM ALLOWANCES

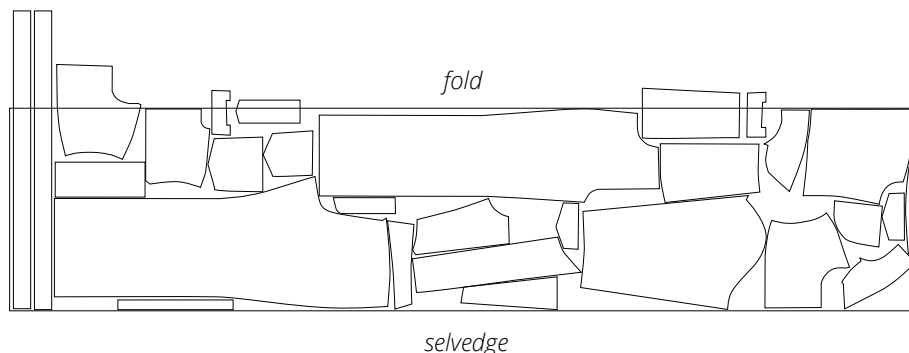
All pattern pieces include seam allowances as follows:

- shoulder seam allowance on the right front shoulder yoke – 1.5 cm (5/8")
- shoulder seam allowance on the left front shoulder yoke – 1.5 cm (5/8")
- princess seam allowance on the right center front bodice – 1.5 cm (5/8")
- princess seam allowance on the left center front bodice – 1.5 cm (5/8")
- two princess seam allowances on the middle front bodice – 1.5 cm (5/8")
- princess seam allowance on the side front bodice – 1.5 cm (5/8")
- inseam allowance on the front leg – 1.5 cm (5/8")
- top edge of the back bodice – 1.5 cm (5/8")
- shoulder and bottom edge seam allowances on the back shoulder yoke – 1.5 cm (5/8")
- top edge, inseam, and center seam allowances on the back leg – 1.5 cm (5/8")
- center and bottom seam allowances on the back leg yoke – 1.5 cm (5/8")
- top edge of the back patch pocket – 2 cm (3/4")
- elbow seam allowance on the top sleeve – 1.5 cm (5/8")
- elbow seam allowance on the bottom sleeve – 1.5 cm (5/8")
- garment hem allowance – 3 cm (1 1/8")
- all other edges – 1 cm (3/8").

Take this into account when laying out pattern pieces on the fabric.

CUTTING LAYOUT

Main fabric, 140 cm (55") wide, with a directional print/nap, cut on fold,
for sizes XS–S in all heights



Attention! Cut the waistband, left front shoulder yoke, chest pocket facing, fly shield, and left center front bodice pieces on a single layer out of leftover fabric. Cut only one of the following pieces: right front shoulder yoke, right center front bodice, belt loops, and fly extension.



Place the back leg paper pattern piece with the cut-out patch pocket onto the right side of the back leg.



Chalk-mark the pocket topstitching lines.



Place the patch pocket onto the back leg using the marked lines as a guide. Pin the pocket in place.