

FROM THE FOUNDER OF THE #VIKISEWS BRAND



Back in 2016, when I was working on my first set of sewing instructions, I was trying to write them in such a way that even a complete beginner could easily understand and use them to create their very first garment. These instructions laid the foundation for the Vikisews brand, its vision and its mission. I wanted to create modern patterns with the utmost detailed and clear instructions.

Now, with each new collection we are constantly improving our instructions, amending them and adding more relevant details. By the time the final product reaches you, our drafters, correctors, and editors would have spent weeks perfecting every word and every photograph. If you compile a few of our instructions together, you will get a sewing manual that will assist you in sewing all kinds of garments at any difficulty level.

And I would be very happy if these instructions helped you to turn your hobby into a lifelong passion... Enjoy the process! Create your ultimate dream wardrobe! Wear your garments proudly for years to come!

If you have any questions, please contact us at info@vikisews.com — we are always there to help.

TOTAL EASE ALLOWANCE

| | Bust ease | Waistline ease | Hipline ease |
|--------|--------------|-----------------|--------------|
| cm | -4 – 0.4 | -0.7 – (-2.9) | 1.9 – 4 |
| inches | -1 5/8 – 1/8 | -1/4 – (-1 1/8) | 3/4 – 1 5/8 |

GARMENT LENGTH

| Height, cm | Back length from waist down, cm | Height, ft | Back length from waist down, in |
|-------------|---------------------------------|----------------|---------------------------------|
| 1 (154–160) | 36.9–37.1 | 1 (5'1"–5'3") | 14 1/2–14 5/8 |
| 2 (162–168) | 40–40.1 | 2 (5'4"–5'6") | 15 3/4 |
| 3 (170–176) | 43–43.1 | 3 (5'7"–5'9") | 16 7/8–17 |
| 4 (178–184) | 46–46.1 | 4 (5'10"–6'1") | 18 1/8 |

SUGGESTED FABRIC

To sew this dress, choose medium-weight, stretch or low-stretch, dress-weight or suiting fabrics made of natural, artificial, synthetic fibers, or blends.

The following fabrics are recommended: denim, dress-weight denim.

Attention! The chosen fabric should contain elastane.

For the bust cup lining, choose fabrics made of natural fibers or blends.

The dress in the photos is made of denim. The fabric is medium-weight and stretchy. The fiber content is 60% cotton, 38% polyester, and 2% elastane. The fabric weight is 285 g/m².

The bust cup lining is made of 100% cotton poplin. The fabric weight is 110 g/m².

3. From interfacing:

- center bust cup – cut 2
- side bust cup – cut 2
- back and armhole facing – cut 1 on fold
- top bust flap – cut 2.

SEAM ALLOWANCES

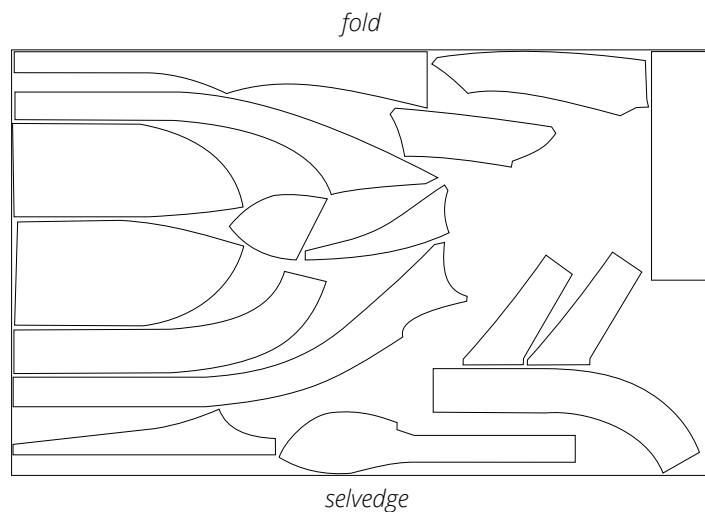
All pattern pieces include 1 cm (3/8") seam allowances.

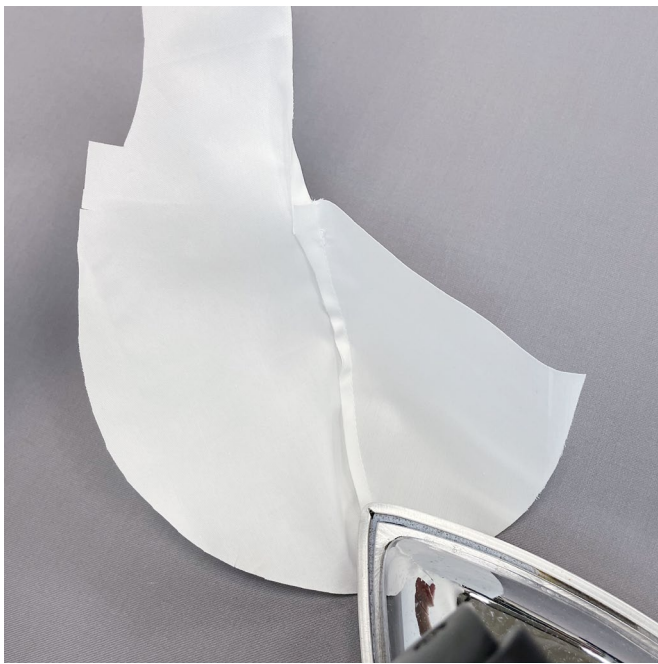
Take this into account when laying out pattern pieces on the fabric.

CUTTING LAYOUT

Cutting layouts for a garment made of one fabric

Main fabric, 140 cm (55") wide, with a directional print/nap, cut on fold,
for sizes 34–38 in all heights





Press the seam allowances toward the side bust cup lining.



Press the seam allowances of the outer bust cup open.



Then press the seam allowances toward the side bust cup.